



claber 8483 Tempo logic Water Timer User Manual

[Home](#) » [claber](#) » claber 8483 Tempo logic Water Timer User Manual

claber 8483 Tempo logic Water Timer User Manual



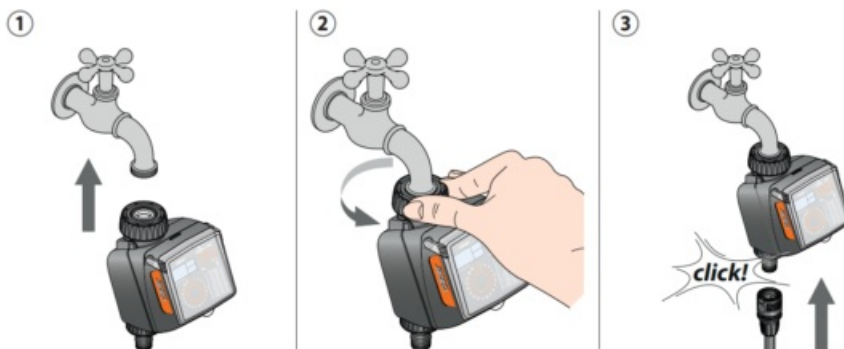
Contents [[hide](#)]

- 1 INSTALLATION
- 2 FITTING THE BATTERIES
- 3 PROGRAMMING – Selecting a programme.
- 4 PROGRAMMING – Starting irrigation. Immediate start
- 5 PROGRAMMING – Starting irrigation
- 6 PROGRAMMING – Making changes to the watering programme
- 7 MANUAL WATERING
- 8 RESET
- 9 SWITCHING OFF THE TIMER
- 10 RAIN SENSOR
 - 10.1 WIRED RAIN SENSOR
 - 10.2 RF RAIN SENSOR
- 11 CLEANING AND MAINTENANCE
- 12 Documents / Resources
- 13 Related Posts

INSTALLATION

Fit the timer to a cold water tap. The spout of the tap should have a 3/4" male thread (if not, use an adaptor). Screw the clamp collar of the 3/4" female fitting onto the tap. Caution: tighten the collar using hand pressure only. Do not use wrenches or other tools. Connect the watering lines to the respective quick-click or threaded fittings, using the appropriate connectors.

Do not install the water timer inside valve boxes, below ground level or indoors. Use mains water or have the water filtered. Do not use the water timer with chemicals or liquids other than water. Do not use the water timer with operating pressures lower than 0.5 bar (7.3 psi) or higher than 10 bar (145 psi). Remember to open the tap and close the timer cover.



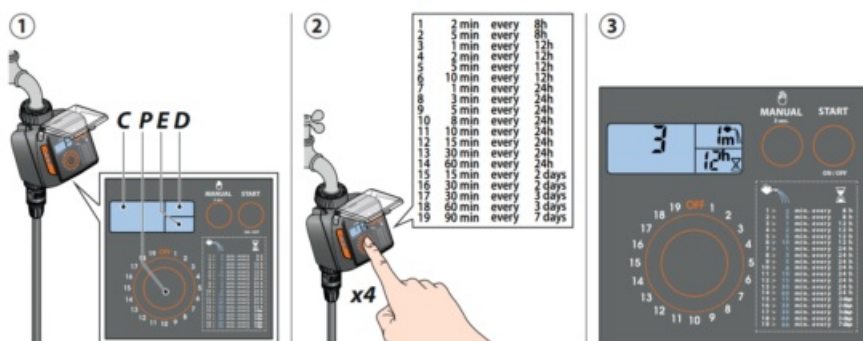
FITTING THE BATTERIES

To insert or replace the batteries, press the lower button down fully and, at the same time, release the front of the timer. Use 2 new, branded 1.5V type AA (LR6) alkaline batteries with an expiry date more than a year away. Insert them into the relevant compartment, respecting the polarity. Replace the batteries within 2 hours of removing them, otherwise programming will be lost. Refit the front part of the timer to the back and press, ensuring that the locking tab clicks into place. Important: always replace the batteries at the beginning of each season! When the batteries are completely flat, the control unit automatically stops its functions and closes the valves. Never replace the batteries during irrigation, otherwise the water will continue to flow at the end of the cycle.





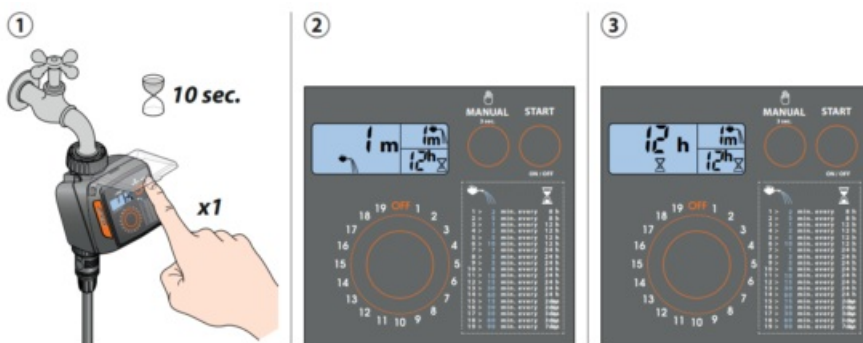
PROGRAMMING – Selecting a programme.

Press any button once to light up the display and proceed with setting the programme. Press button P one or more times until the programme you need appears on display C (e.g. 3 = 1 minute every 12 hours): display D will show the run time (how many minutes to water for); display E will show the frequency (how often to water). Both the run times and the frequencies are pre-set and cannot be changed.




PROGRAMMING – Starting irrigation. Immediate start

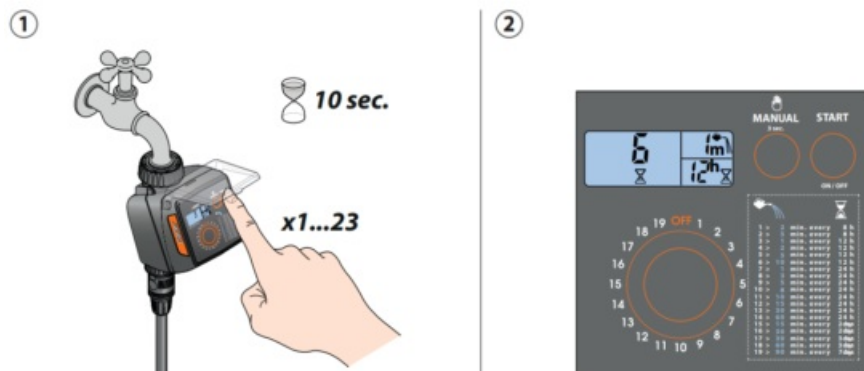
Within 10 seconds of selecting the programme, press the “START” button once only. Releasing the button, the message “0 h” blinks 3 times in the display, and the automatic watering cycle will start straight away. The symbol  appears in display field “C”, indicating that watering is in progress, together with the time remaining until the end of the cycle. At the end of the watering cycle, display field “C” shows the symbol  together with time remaining until the start of the next watering cycle. On display D – E you will see the irrigation run time and frequency respectively.



PROGRAMMING – Starting irrigation

Delayed start. Within 10 seconds of selecting the programme, press the “START” button repeatedly until the desired delayed start time for the irrigation cycle is shown on display C. This can be set to between a minimum of 1 hour and a maximum of 23 hours. Release the button, and the number of hours will blink 3 times, after which the

programme begins the countdown to the automatic start of the watering cycle, shown in display field “C” above the symbol . If you want to view the programme set, press the START button.

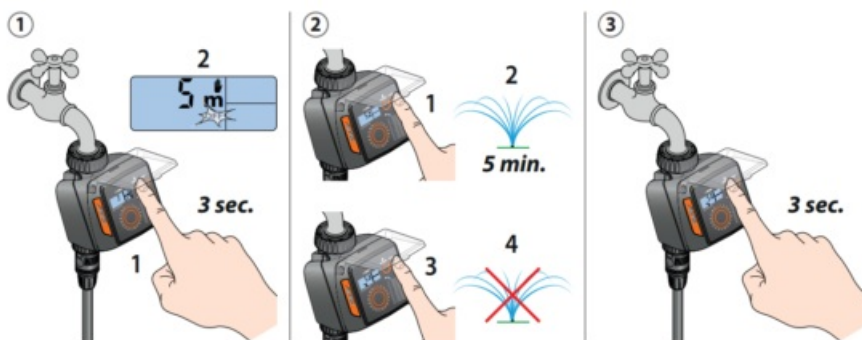


PROGRAMMING – Making changes to the watering programme

Repeat the programming procedure as indicated in the “PROGRAMMING – Selecting a programme” section. The new programme set in this way will replace the previous one. The line does not have to be turned to OFF beforehand.

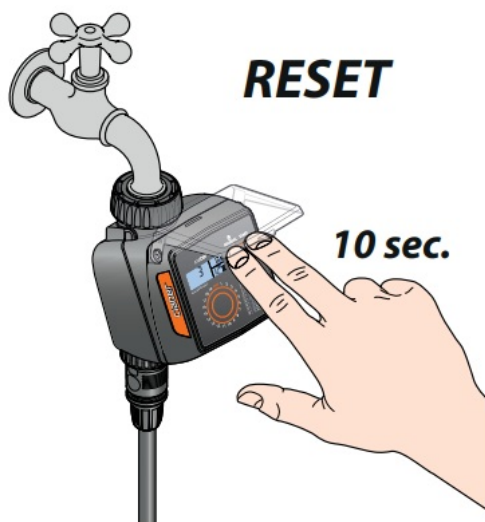
MANUAL WATERING

If, in the waiting time between one irrigation session and the next, you want to carry out a supplementary session, you can start manual irrigation for 5 minutes. Press the “MANUAL” button and hold it for at least 3 seconds; the unit goes into manual mode. Pressing the “START” button, an irrigation session with a run time of 5 minutes that cannot be changed will start. The run time of a manual irrigation session cannot be increased, but its end can be brought forward manually by pressing the START button. To quit the manual function, make certain that the valve is OFF, then press the “MANUAL” button and hold it for at least three seconds.



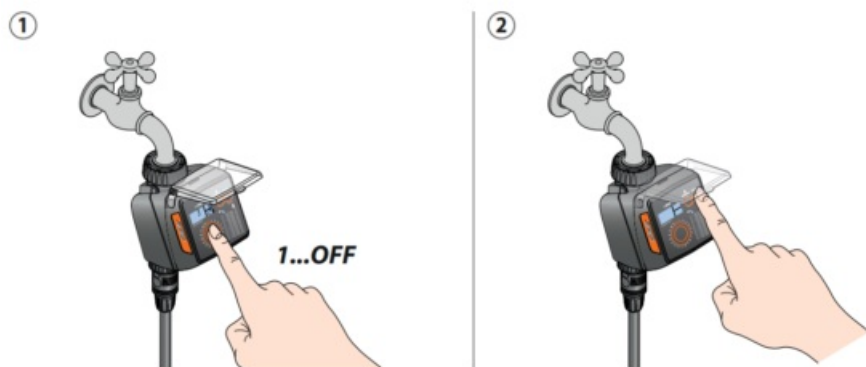
RESET

The timer’s factory settings can be restored at any time by pressing the MANUAL and START buttons at the same time and holding for at least 10 seconds, until all the segments appear on the display



SWITCHING OFF THE TIMER

To stop an irrigation session, press button P until OFF appears. Then press the “P” button once, or repeatedly until the “OFF” symbol appears, then press “START”. The programme will have to be reset.



RAIN SENSOR

The timer can be connected to a Rain Sensor, by wire (cod. 90915) or by radio (cod. 90831). When the rainwater in the Rain Sensor exceeds 5 mm, the sensor automatically suspends the irrigation cycle, which then restarts once the water has evaporated.

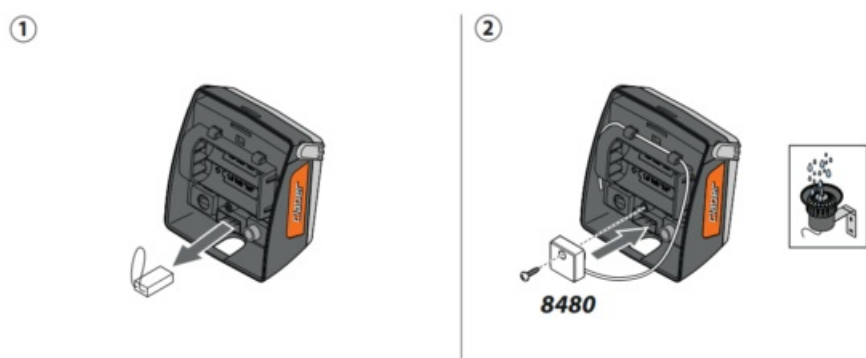
WIRED RAIN SENSOR

Remove the protective jumper from the rain sensor contacts (no tools are needed). If the Rain Sensor is not going to be used, the jumper must remain in place across the contacts. Fit the connector of the sensor lead. Check that the two-core cable enters the timer by way of the slot provided in the rear of the housing.



RF RAIN SENSOR

Remove the protective jumper from the rain sensor contacts (no tools are needed). If the Rain Sensor is not going to be used, the jumper must remain in place across the contacts. Install the RF Rain Sensor Interface (cod. 8480), routing the wire antenna through the relative clips.



CLEANING AND MAINTENANCE

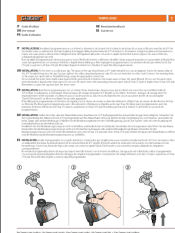
Clean the filter at the end of each season and check it regularly. Turn off the water tap and loosen the screw collar, turning anticlockwise. Loosen the 3/4" screw collar of the tap connector, turning clockwise. Remove the filter. Rinse the filter clean under running water. After washing, reassemble all parts as before.



At the end of the season, before the winter frosts, disconnect the timer from the tap, remove the batteries and store it in a closed environment, away from damp, where the temperature does not fall below 3°C.



Documents / Resources

	<p>claber 8483 Tempo logic Water Timer [pdf] User Manual TEMPO LOGIC, 8483 Tempo logic Water Timer, 8483, Tempo logic Water Timer</p>
---	---