


CITAQ

**S1W05,
S1W08
S1 Lite
POS
System**



CITAQ S1W05, S1W08 S1 Lite POS System User Manual

[Home](#) » [Citaq](#) » CITAQ S1W05, S1W08 S1 Lite POS System User Manual 

Contents

- 1 CITAQ S1W05, S1W08 S1 Lite POS System
- 2 Product Usage Instructions
- 3 FAQ
- 4 PACKAGE CONTENT
- 5 Product parameters
- 6 Installation Notes
- 7 Installing the paper roll
- 8 Dimensions
- 9 FCC Statements
- 10 Documents / Resources
 - 10.1 References

CITAQ

CITAQ S1W05, S1W08 S1 Lite POS System



Specifications:

- **Model:** CITAQ S1 Lite POS SYSTEM
- **Model Variants:** S1W05~S1W08
- **Electrical Parameters:**
 - **Operative Voltage:** AC 100~240 V
 - **Operative Current:** 1.5 A
 - **Operative Frequency:** 50/60 Hz
 - **Standby Power:** 0.5W
 - **Maximum Operating Power:** 60 W
 - **Operating Temperature:** 0-50°C
 - **Operating Humidity:** 10% – 90%
- **Product Dimension:** W286*L205*H188 mm
- **Net Weight:** 3.4 kg
- **Package Dimension:** L395*P270*H265 mm
- **Gross Weight:** 4.2 kg

Product Usage Instructions

Installation:

Display Installation:

- Connect the power plug into the motherboard interface and then connect the adapter.
- Press the power switch button once to power on the device.

Installing the Paper Roll:

Press the 'paper bin handle' upwards to open the printer paper bin. Install the paper roll correctly as shown in the diagram provided.

Product Dimensions:

	11.6 Inch	13.3 Inch
Product Size (L*W*H)	286*205*188 mm	323*208*191 mm

FAQ

Q: What are the recommended operating conditions for the CITAQ S1 Lite POS SYSTEM?

A: The device is recommended for use in environments with an operating temperature between 0-50°C and humidity levels ranging from 10% to 90%.

Q: How do I power on the system?

A: Press the power switch button once to light up the display screen and enter the system.

Q: How do I install the paper roll?

A: Press the 'paper bin handle' upwards to open the printer paper bin, and correctly install the paper roll as per the provided diagram.

Please read this manual carefully before using device.

PACKAGE CONTENT

Kindly find below items when opening carton

主设备/Device	1 台/unit
热敏纸/Thermal pape	1 卷/roll
适配器/Adaptor	1 个/pc
电源线/Power core	1 条/pc
用户指南/Manual	1 本/pc
干燥剂/Desiccative	2 包/bags

Product parameters

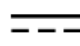
电子参数/ELECTRICAL PARAMETERS	
电压/Operative Voltage	AC 100~240 V
电流/Operative Current	1.5 A
频率/Operative Frequency	50/60 Hz
待机功率/StandbyPower	0.5W
最大功率/Maximum operating power	60 W
工作温度/Operating Temperature	0℃ -50℃
工作湿度/Operating Humidity	10% - 90%
包装/PACKAGING	
产品尺寸/Product Dimension	W286*L205*H 188 mm
净重/NetWeight	3.4 kg
包装尺寸/Package Dimension	L 395*P 270*H 265 mm
毛重/Gross Weight	4.2 Kg

Note: The data is subject to the actual configuration.

Detailed configuration parameters

CPU	型号/Model	Intel Celeron J6412
	内核/Core Numbers	Quad-core 2.0 GHz
GPU	型号/Model	Intel® UHD Graphics for 10th Gen Intel® Processors
	频率/Frequency	400MHz
RAM	类型/Type	DDR4
	容量/Memory	8 GB/16 GB MAX
	接口类型/Interface	SODIMM
SSD	类型/Type	SSD
	容量/Memory	128 GB/512GB MAX
	接口类型/Interface	M.2 2280
触摸屏/TOUCH SCREEN	尺寸/Dimension	13.3"/11.6
	类型/Type	Capacitive
	触摸点/Touch Point	10 Points
	接口类型/Interface	USB

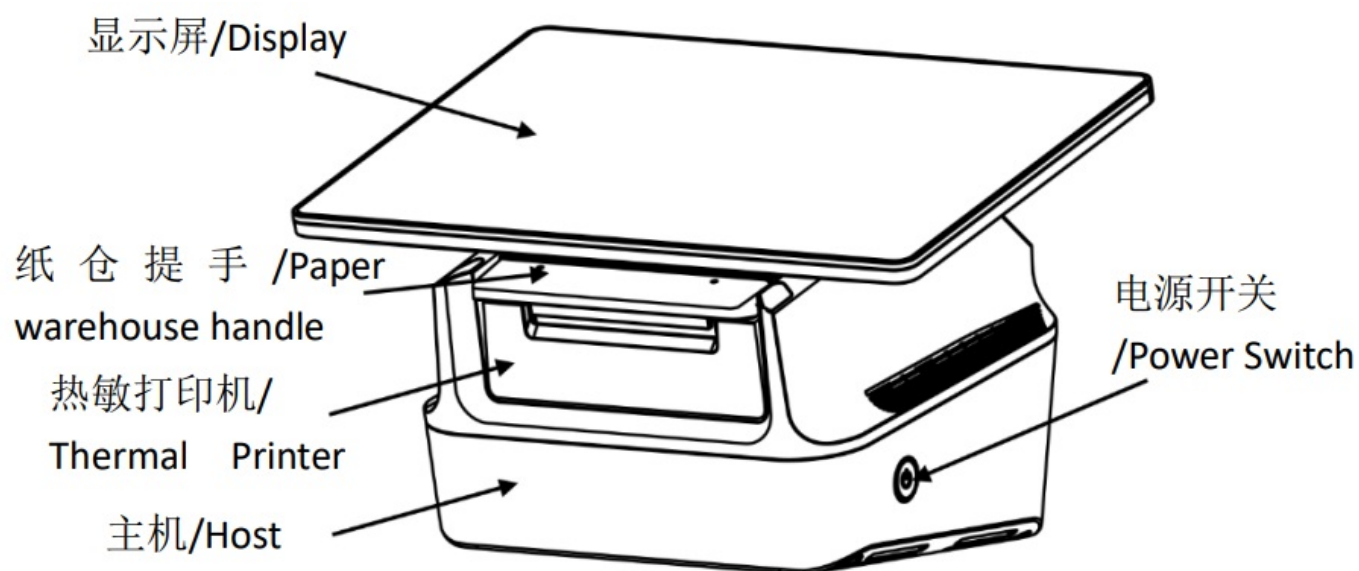
DISPLAY	尺寸/Dimension	13.3"/11.6"
	类型/Type	TN
	分辨率/Resolution	1920*1080/1366*768
	亮度/Brightness	TIP 220cd/m2 with LED backlight
	接口类型/Interface	eDP
	放置角度/Rotation Angle	≥80°~45°
喇叭/SPEAKER	功率/Power	1.2 W x 2
	音量/Volume	≥90 dB
	数据接口/Interface	L/R Audio
无线	WIFI	2.4G&5G
	蓝牙/Bluetooth	BT 2.1/4.2
	Operating Frequencies	2.412~2.4835GHz and 5.180~5.835GHz
外部接口	USB2.0	Rear, 3 ports
	USB3.0	1 port; Rear, 2 ports

/EXTERNAL INTERFACE	网口/LAN	RJ45, self-adjusting 100/1000 M, 1 port
	串口/COM	DB9 PIN, available 0 V\5 V\12 V, 2 ports
	音频/Audio Jack	3,5 mm, with microphone
	钱箱接口/Cashdrawer	RJ11, 6P6C, 1 port
	电源接口/Power Interface	DC24V  2.5A/DIN 4PIN, 1 port
	HDMI	HDMI x 1 port
开关/SWITCH	按键	Light Touch Switch

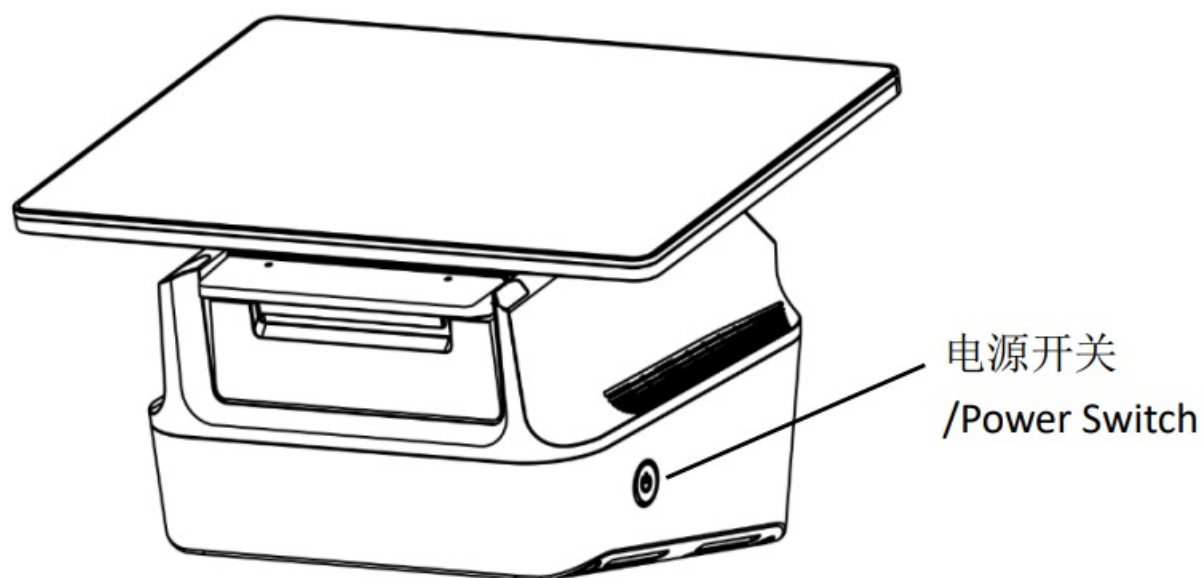
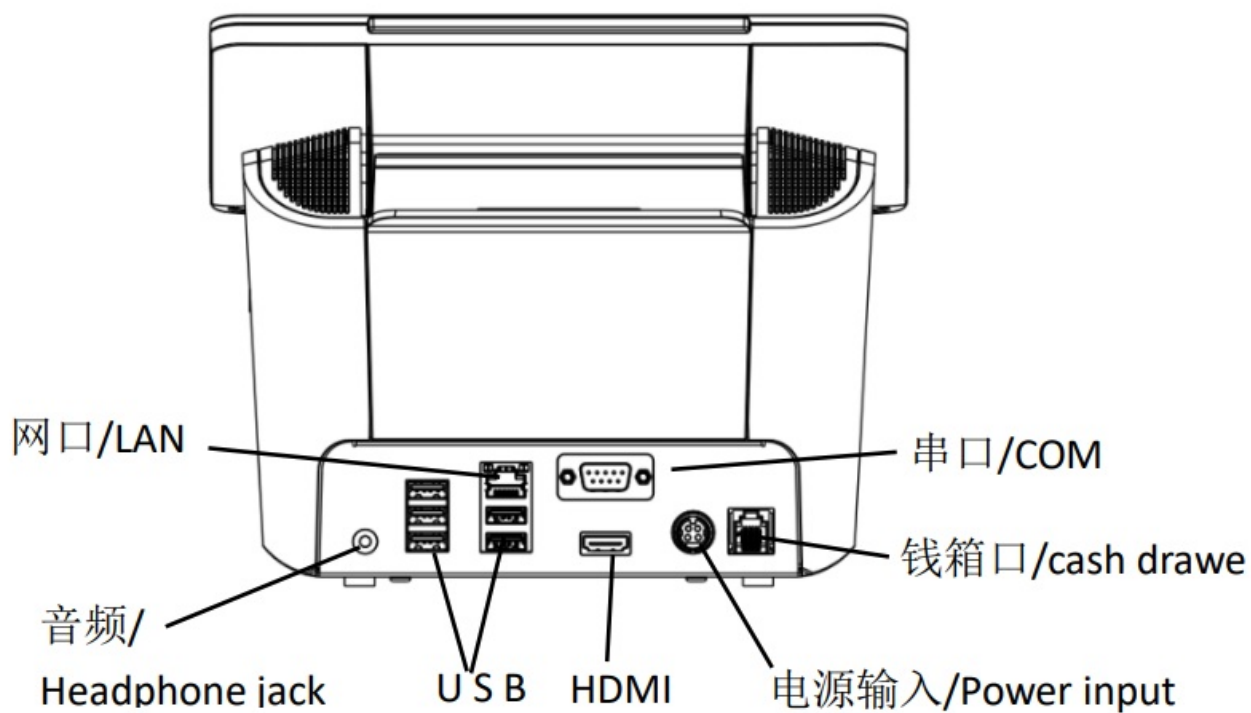
打印机/PRINTER 80 MM	机头尺寸/Format	80 mm
	机芯型号/Mechanism model	PT72A
	打印速度/Speed	≥200 mm/s (max 250 mm/s)
	打印寿命/Life	≥150 km
	纸卷直径/Dimension paper roll	80 mm
	切刀模式/Cutting mode	Automatic cut or half-cut
	字库/Code page	GB18030, English code page inglese (12*24, 24*24 dot matrix)
	功能/Functions	Out-of-paper alarm, anomaly alarm, barcode print, QR code print, online updates etc.
	指令/Language	Command set ESC/POS
	数据接口/Interface	USB

Installation Notes

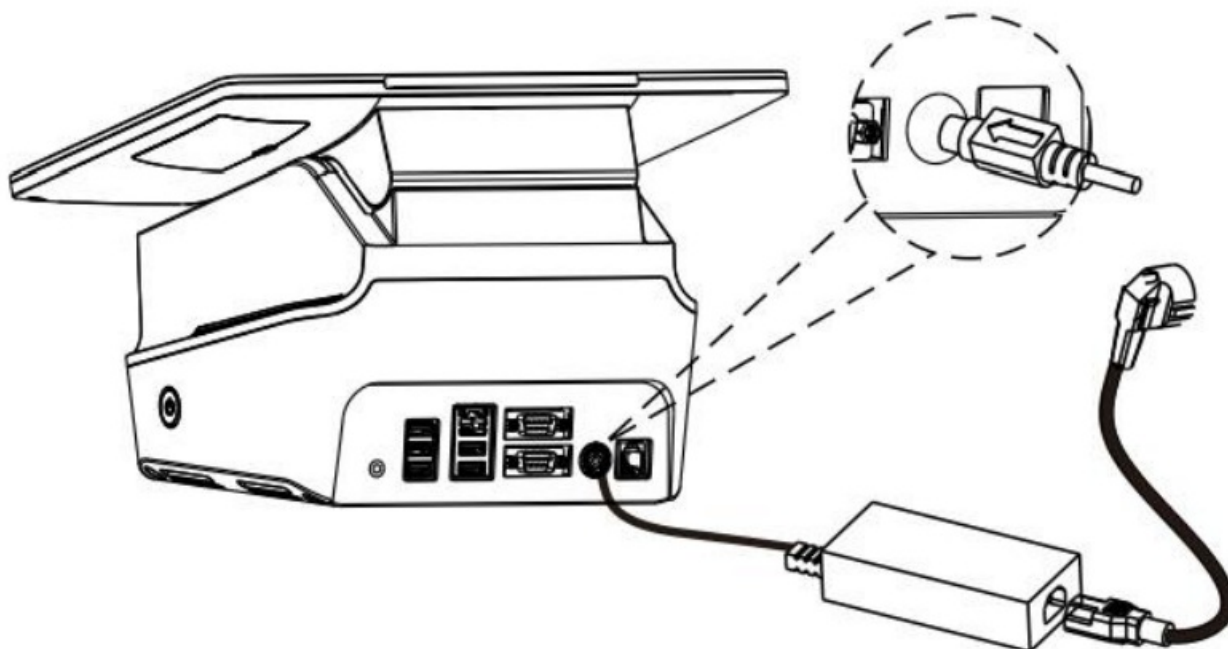
PRODUCT PROFILE



Product Interface

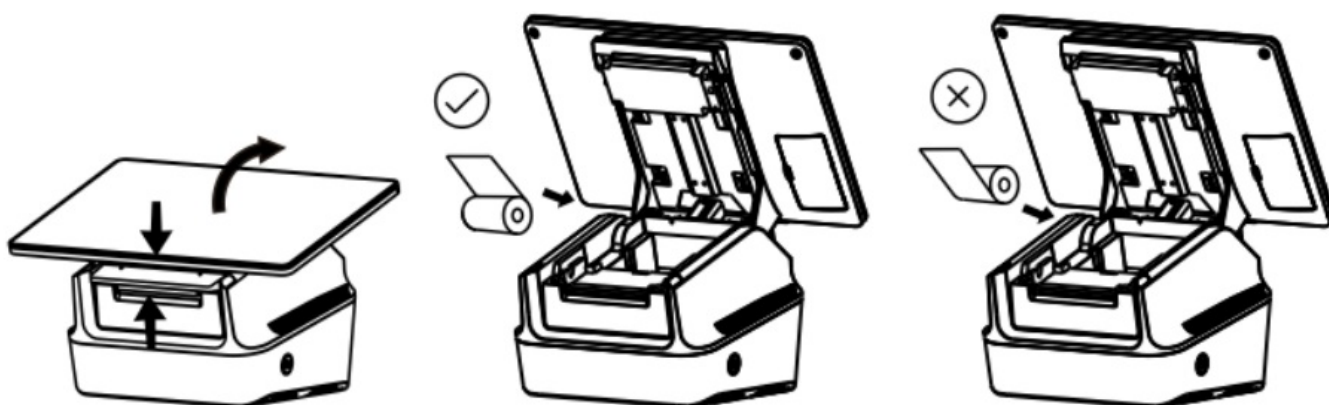


1. Press the "power switch" button once, the display screen will light up and enter the system.



Insert the power plug into the motherboard interface and then connect the adapter.

Installing the paper roll

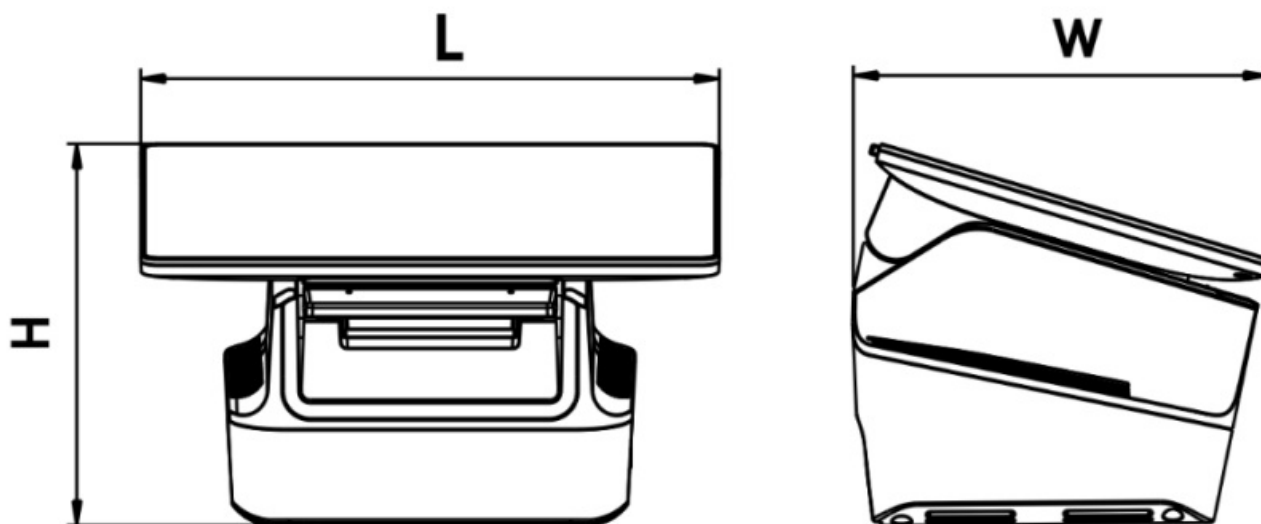


Press the 'paper bin handle' upwards to open the printer paper bin, and install the paper roll correctly as shown in the diagram.

- Correctly install the paper roll
- Wrong paper roll installation

Dimensions

Unit:mm



屏幕规格/ Screen specifications	产品尺寸/ Product size (L*W*H)
11.6"	286*205*188
13.3"	323*208*191

FCC Statements

The company is not responsible for the following actions. Damage caused by use and maintenance without the conditions described in this guide;

The company will not be responsible for any damages or problems caused by the alternatives or consumables (not the original products or approved products provided by the company). Without consent of the company. It is not authorized to make product modifications or changes.

Disclaimer

Due to product updates, some details of this document may not match the product, please refer to the actual product, and the right to interpret this document belongs to the company. The right to modify this guide without prior notice is reserved.

In the living environment, this product may cause radio interference.

This machine is only suitable for safe use in areas below 5000 meters and only for safe use in non-tropical climates.

Product standards and technical requirements: GB 4943.1-2022; GB/T 9254-2021 (Class A).

This device complies with the basic recommendations and other relevant measures in the 2014/30/EU and 2014/35/EU directive.

This symbol means that it is forbidden to dispose the product of with normal household waste. At the end of the product life cycle, waste equipment should be taken to designated collection points, returned to the distributor when purchasing a new product, or contact your local authority representative for detailed information on WEEE recycling.

This device complies with part 15 of the FCC Rules. Operation is subject to the following two conditions: (1) This device may not cause harmful interference, and (2) this device must accept any interference received, including interference that may cause undesired operation.

Any Changes or modifications not expressly approved by the party responsible for compliance could void the user's authority to operate the equipment.

Note: This equipment has been tested and found to comply with the limits for a Class B digital device, pursuant to part 15 of the FCC Rules. These limits are designed to provide reasonable protection against harmful interference in a residential installation. This equipment generates uses and can radiate radio frequency energy and, if not installed and used in accordance with the instructions, may cause harmful interference to radio communications. However, there is no guarantee that interference will not occur in a particular installation.

If this equipment does cause harmful interference to radio or television reception, which can be determined by turning the equipment off and on, the user is encouraged to try to correct the interference by one or more of the following measures:

- Reorient or relocate the receiving antenna.
- Increase the separation between the equipment and receiver.
- Connect the equipment in to an outlet on a circuit different from that to which the receiver is connected.
- Consult the dealer or an experienced radio/TV technician for help.

This equipment complies with FCC radiation exposure limits set forth for an uncontrolled environment. This equipment should be installed and operated with minimum distance 20cm between the radiator & your body.

Manufacturer: CITAQ CO.,LTD.

Tel: 86-754-88990429

Website: www.citaqpos.com

Address:9th,13th floor, No. 6 Keji Middle Road, High-tech zone, Shantou, Guangdong

Documents / Resources

<div><div>用户指南</div><div>User Manual</div><div>CITAQ S1 Lite POS SYSTEM</div><div>Model-S1W05-S1W08</div><div><div>©2018 CITAQ Co., Ltd.</div><div>Printed in China</div></div></div>	<div><div>CITAQ S1W05, S1W08 S1 Lite POS System [pdf] User Manual</div><div>S1W05, S1W08, S1W05 S1W08 S1 Lite POS System, S1W05 S1W08, S1 Lite POS System, Lite POS System, POS System, System</div></div>
---	--

References

- www.citaqpos.com
- [User Manual](#)

[Manuals+](#), [Privacy Policy](#)

This website is an independent publication and is neither affiliated with nor endorsed by any of the trademark owners. The "Bluetooth®" word mark and logos are registered trademarks owned by Bluetooth SIG, Inc. The "Wi-Fi®" word mark and logos are registered trademarks owned by the Wi-Fi Alliance. Any use of these marks on this website does not imply any affiliation with or endorsement.