

CISCO UCS Server Diagnostic Utilities User Guide

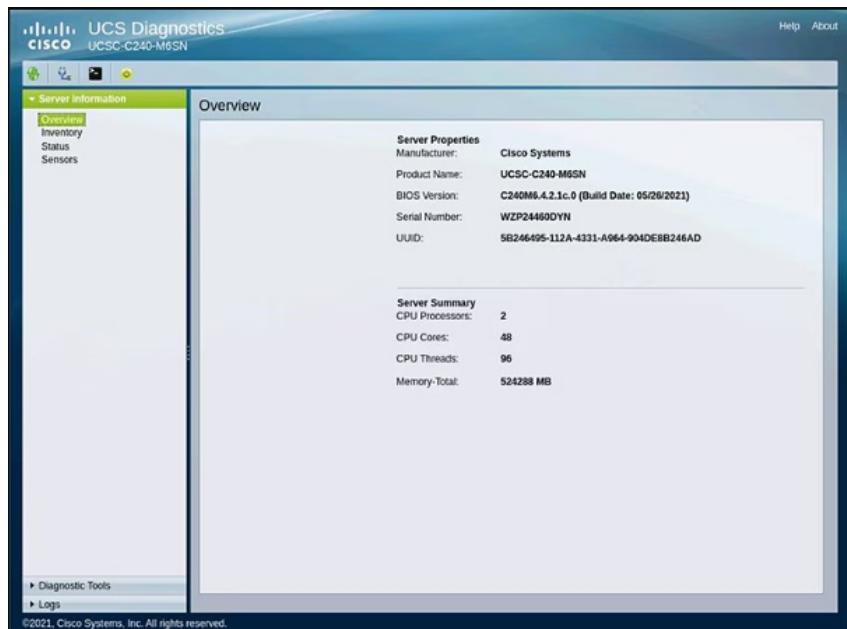
[Home](#) » [Cisco](#) » CISCO UCS Server Diagnostic Utilities User Guide 

Contents

- 1 CISCO UCS Server Diagnostic Utilities
- 2 Product Information
- 3 Product Usage Instructions
- 4 Cisco UCS Server Diagnostics Utilities
- 5 System Requirements
- 6 New Features
- 7 Related Documentation
- 8 Documents / Resources
 - 8.1 References
- 9 Related Posts



CISCO UCS Server Diagnostic Utilities



Specifications

Supported Platforms:

- Cisco UCS M5 Server
- Cisco UCS M6 Servers
- Cisco UCS M7 Servers
- Cisco UCS B200 M5
- Cisco UCS B480 M5 ...

Product Information

The Cisco UCS Server Diagnostic Utilities include:

1. **Cisco UCS Server Diagnostics Utility:** An application for server diagnostics.
2. **Cisco UCS UEFI Diagnostics Utility:** Helps perform various tests in UEFI shell.

Hardware Requirements: Minimum hardware requirements for UCS Server Diagnostics Utility are not specified in the manual.

Product Usage Instructions

Cisco UCS Server Diagnostics Utility

The Cisco UCS Server Diagnostics Utility is used for server diagnostics. To perform tasks using this utility, refer to the latest version of the User Guide.

Cisco UCS UEFI Diagnostics Utility

The Cisco UCS UEFI Diagnostics Utility helps in performing CPU, Memory, HDD, OS, Video, and Drivers tests in UEFI shell. It can only run on BIOS UEFI mode.

- **Note:** Test logs can be transferred to a USB drive.
- **Note:** BIOS legacy mode is not supported for this utility.

To download the ISO images for both utilities, visit the Software Download section.

FAQ

1. **Q: What are the supported platforms for Cisco UCS Server Diagnostic Utilities?**

A: The supported platforms include Cisco UCS M5, M6, and M7 Servers, various B-Series servers, C-Series servers, and more. Refer to the manual for the full list.

2. **Q: Can the Cisco UCS UEFI Diagnostics Utility run on BIOS legacy mode?**

A: No, the Cisco UCS UEFI Diagnostics Utility can only run on BIOS UEFI mode; legacy mode is not supported.

Cisco UCS Server Diagnostics Utilities

Cisco provides the following diagnostics utilities for Cisco UCS C-Series Servers:

1. Cisco UCS Server Diagnostics Utility—The Cisco UCS Server Diagnostics Utility is an application that helps you to:

- View server inventory.
- Perform interactive offline diagnostics.
- View server health and logs.

For more information on performing these tasks, see the latest version of the Cisco UCS Server Diagnostics Utility User Guide.

Beginning with release 6.1(3a), NI-IOD is supported by Python release 3.0.

2. Cisco UCS UEFI Diagnostics Utility—Cisco UCS UEFI Diagnostics Utility application helps you perform various CPU, Memory, HDD, OS, Video, and Drivers test in UEFI shell.



- Test logs can be transferred to a USB drive.
- Cisco UCS UEFI Diagnostics Utility can run only on BIOS UEFI mode. BIOS legacy mode is not supported.

You can download the ISO images for Cisco UCS Server Diagnostics Utility and Cisco UCS UEFI Diagnostics Utility from Software Download.

This release notes provides information about both the utilities. Both these utilities follow different release schedules. The information provided in this release notes applies to both the utilities unless specified otherwise.

Revision History

Revision	Date	Description
A0	June 19, 2024	Created release notes for Release 7.1.1.240023.

System Requirements

Supported Platforms
Release 7.1.1.240023

Cisco UCS Server Diagnostics Utility 7.1.1.240023 is supported on the following Cisco UCS servers:

Cisco UCS M5 Server	Cisco UCS M6 Servers	Cisco UCS M7 Servers
Cisco UCS B200 M5 Cisco UCS B480 M5	Cisco UCS B200 M6 Cisco UCS X210c M6	Cisco UCS X410c M7 Cisco UCS X210c M7
Cisco UCS C220 M5 Cisco UCS C240 M5 Cisco UCS C240 SD M5 Cisco UCS C480 M5 Cisco UCS C480 M5 ML Cisco UCS C125 M5 Cisco UCS S3260 M5	Cisco UCS C220 M6 Cisco UCS C240 M6 Cisco UCS C245 M6 Cisco UCS C225 M6	Cisco UCS C220 M7 Cisco UCS C240 M7

Hardware Requirements for Cisco UCS Server Diagnostics Utilities

The following are the minimum hardware requirements for UCS Server Diagnostics Utility:

- **CD-ROM Drive**—A USB CD/DVD-ROM drive is required to be able to boot and run the UCS Server Diagnostics Utility. You can also use the virtual media option in the Cisco IMC KVM to boot UCS Server Diagnostics Utility.
- **Mouse**—Some functions require a standard mouse (USB) for navigation.
- **RAM**—A minimum of 4 GB RAM. If the available RAM is less than the minimum recommended value, UCS Server Diagnostics Utility will not function properly.

New Features

New Features in Release 7.1.1.240023

Beginning with release 7.1.1.240023, SDU supports the following features:

- Support for 5th-Gen Xeon® processor
- Beginning with Cisco IMC release 4.3(4.240152), SDU provides Redfish API support for invoking diagnostics.

Related Documentation

For configuration information for this release, refer to the following:

- Cisco UCS Server Configuration Utility User Guide
- Cisco Driver Update Utility User Guide

The following related documentation is available for the Cisco Unified Computing System:

- Regulatory Compliance and Safety Information for Cisco UCS


Obtaining Documentation and Submitting a Service Request

For information on obtaining documentation, submitting a service request, and gathering additional information, see What's New in Cisco Product Documentation at:

<http://www.cisco.com/en/US/docs/general/whatsnew/whatsnew.html>

Subscribe to What's New in Cisco Product Documentation, which lists all new and revised Cisco technical documentation, as an RSS feed and deliver content directly to your desktop using a reader application. The RSS feeds are a free service.

Documents / Resources



CISCO UCS Server Diagnostic Utilities [pdf] User Guide

M5, M6, M7, B200 M5, B480 M5, X210c M6, X410c M7, X210c M7, C220 M5, C240 M5, C240 SD M5, C480 M5, C480 M5 ML, C125 M5, S3260 M5, C220 M6, C240 M6, C245 M6, C225 M6, C220 M7, C240 M7, UCS Server Diagnostic Utilities, UCS Server, UCS Diagnostic Utilities, Ser ver Diagnostic Utilities, Diagnostic Utilities, Diagnostic, Utilities

References

- [User Manual](#)

[Manuals+](#), [Privacy Policy](#)

This website is an independent publication and is neither affiliated with nor endorsed by any of the trademark owners. The "Bluetooth®" word mark and logos are registered trademarks owned by Bluetooth SIG, Inc. The "Wi-Fi®" word mark and logos are registered trademarks owned by the Wi-Fi Alliance. Any use of these marks on this website does not imply any affiliation with or endorsement.