



# CISCO Pro Table Microphone Installation Guide

[Home](#) » [Cisco](#) » CISCO Pro Table Microphone Installation Guide 

## Contents

- 1 CISCO Pro Table Microphone
- 2 Product Information
- 3 WHAT'S IN THE BOX
- 4 Cisco Table Microphone Pro
  - 4.1 Placement plan
  - 4.2 Features
  - 4.3 Choose your track
  - 4.4 Orientation
  - 4.5 Removing the cable cover
- 5 Documents / Resources
  - 5.1 References



**CISCO Pro Table Microphone**



## Product Information

The Cisco Table Microphone Pro is a premium directional microphone designed to capture participant voices from different directions and deliver multiple streams of audio. It is equipped with various features including a mute button, light ring, power light, service port, and reset button. The microphone also comes with a cable cover and adapter for easy installation.

### Features:

- Mute button
- Light ring with green, red, and blue indicators
- Power light
- Service port
- Reset button

### Dimensions:

- Height: 105 mm (4 1/8 inches)
- Diameter: 29 mm (1.2 inches)
- Cable Length: 11 m (36 feet)

**Orientation:**For microphones placed along the centerline, the arrow on the adapter should point away from the screen. For all other microphones, the arrow should point toward the participants, perpendicular to the nearest table edge.

### Placement Plan:

A table placement plan is required for installation. If a placement plan has not been provided, refer to the Cisco Room

Panorama Room Preparation Guidelines (<https://www.cisco.com/go/panorama-installation>) for more information on creating your own plan.

**Track Selection:**You can choose between tracks A, B, or C for your microphone.

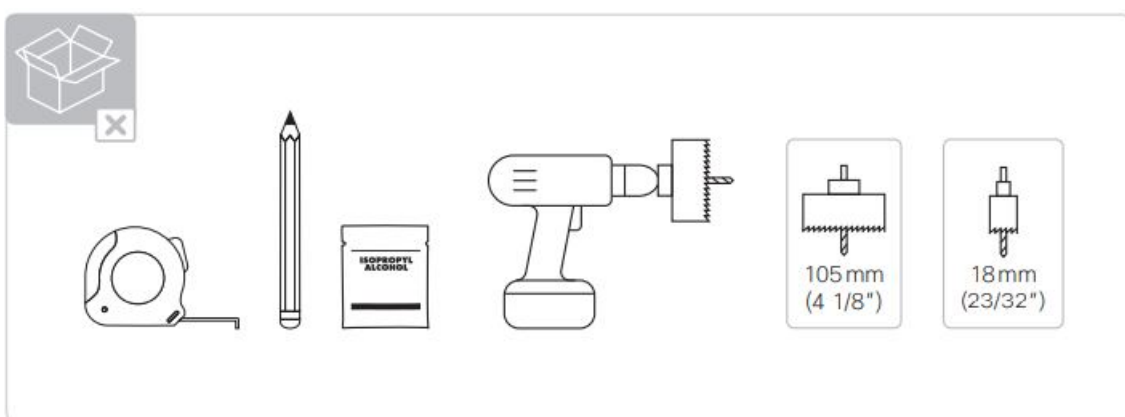
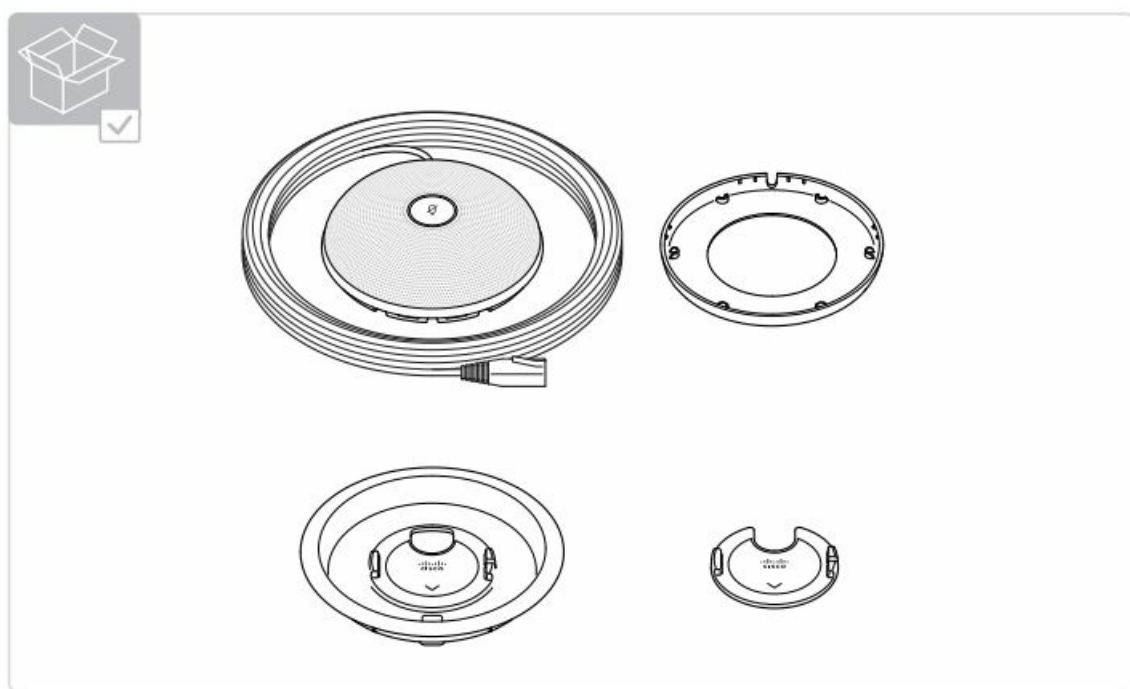
### Installation Guide:

1. Refer to the placement plan and measure the positions of the holes on your table. If the table does not have pre-drilled holes, mark the hole positions accordingly.
2. Drill the holes, ensuring that the adapter center is slightly offset from the hole.
3. Install the adapter next to the hole.

4. Orient the adapter with the arrow based on the microphone placement instructions mentioned above.
5. Attach the cable cover to the microphone.
6. Place the microphone on the adapter.
7. Connect the microphone to power and run the setup from the Settings menu on the touch controller.

Room Panorama and Room 70 Panorama support up to 6 Table Microphone Pro. The Table Microphone Pro cannot be combined with other microphones.

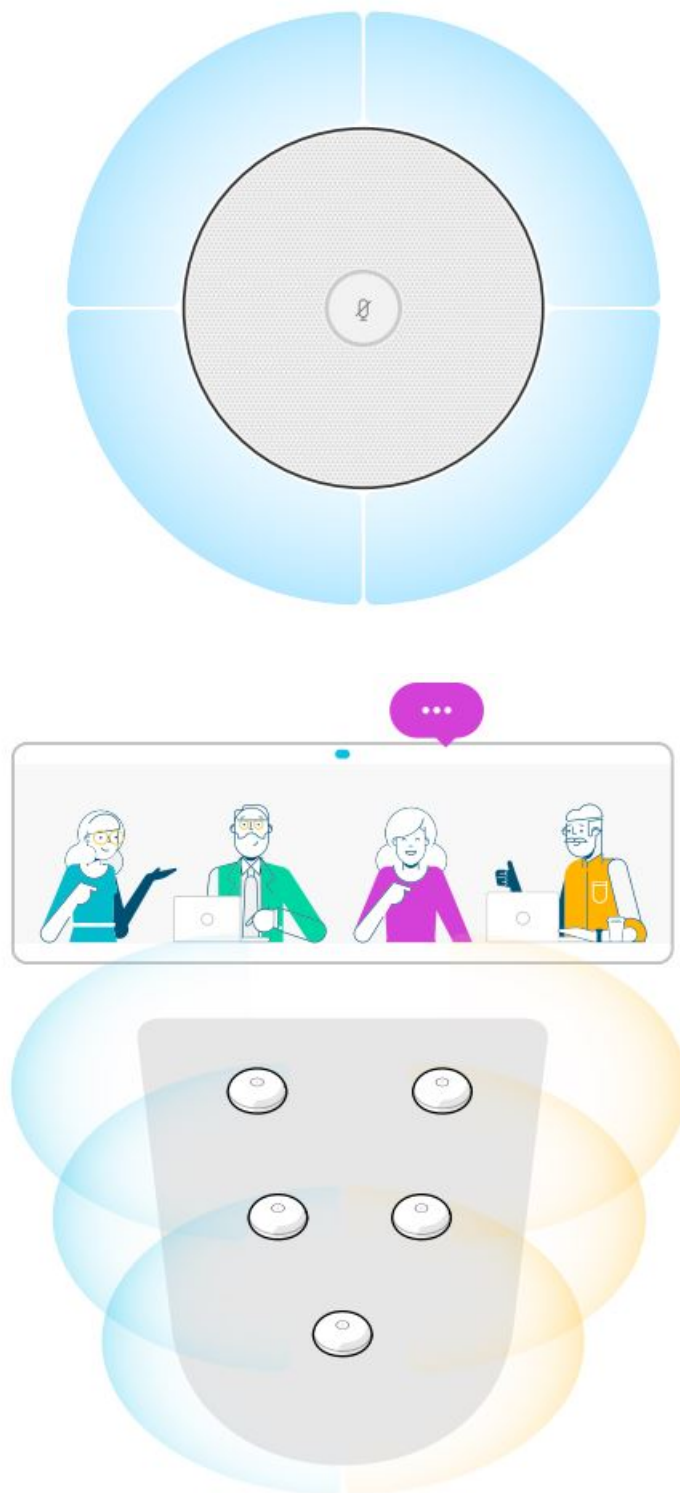
## WHAT'S IN THE BOX



This product must be used with the supplied table adapters to lock position and orientation.

## Cisco Table Microphone Pro

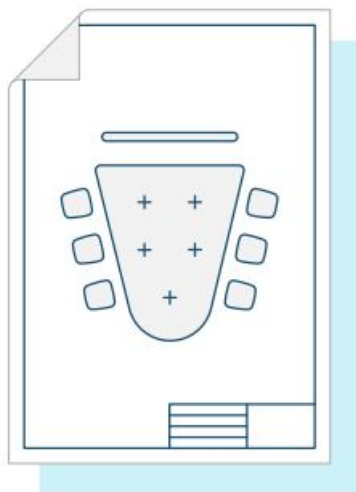
The Table Microphone Pro is a premium directional microphone. It can capture participant voices from different directions and deliver multiple streams of audio.



When installed correctly, participants in the far end will hear the participants' voices coming out of the loudspeaker nearest to their image on the screen.

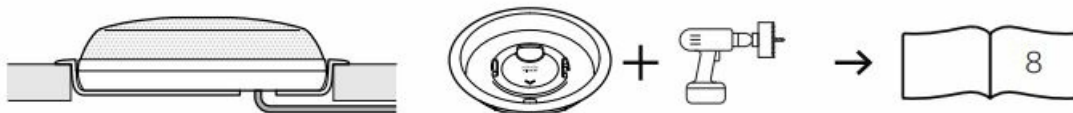
## Placement plan

You will need a table placement plan. If a placement plan has not been provided, refer to the Cisco Room Panorama Room Preparation Guidelines (<https://www.cisco.com/go/panorama-installation>) for more information about making your own.



## Features

A



B



C



## Choose your track

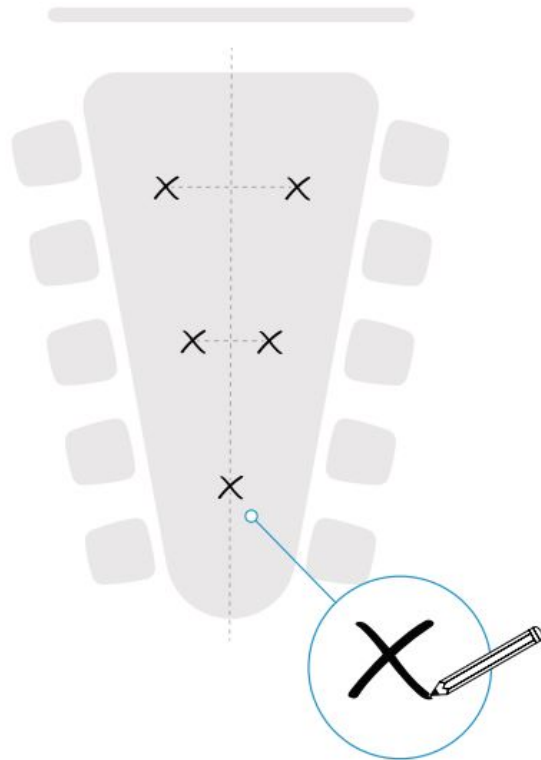
Choose one of the tracks and proceed to the indicated page.

A

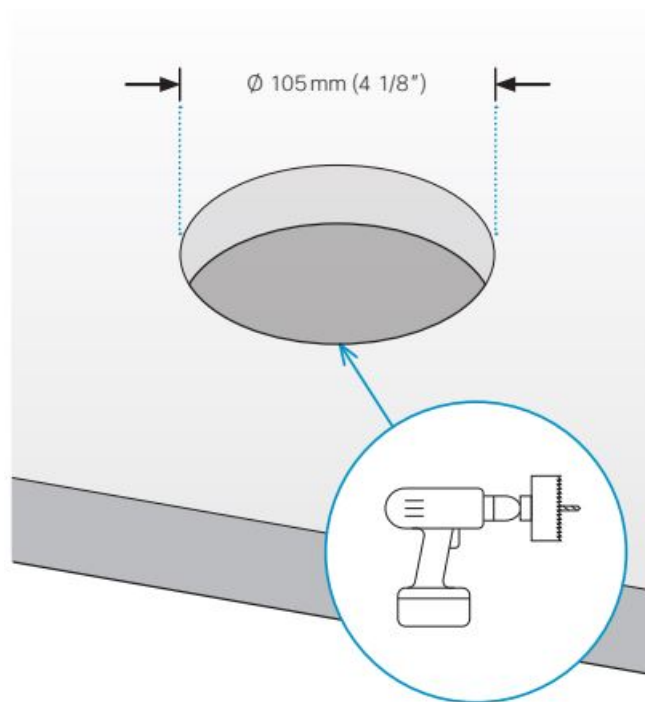


1. Refer to the placement plan. If your table does not have pre-drilled holes, measure and mark the positions of

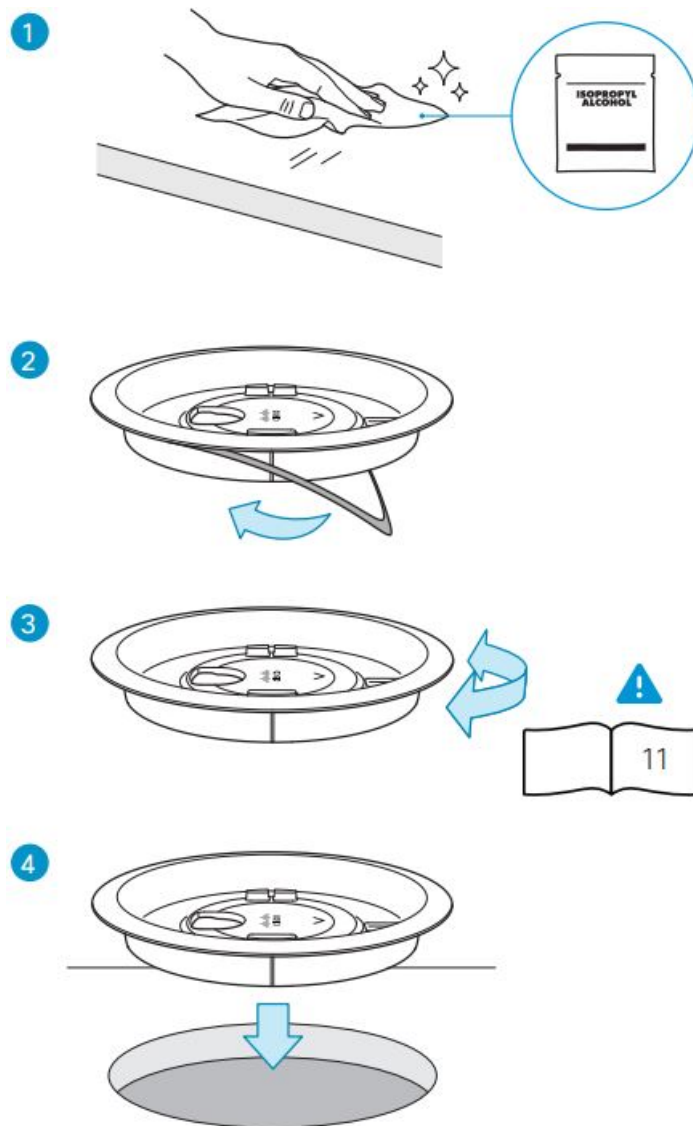
the holes.



2. Drill the holes.



3. Orient the adapter with the arrow.

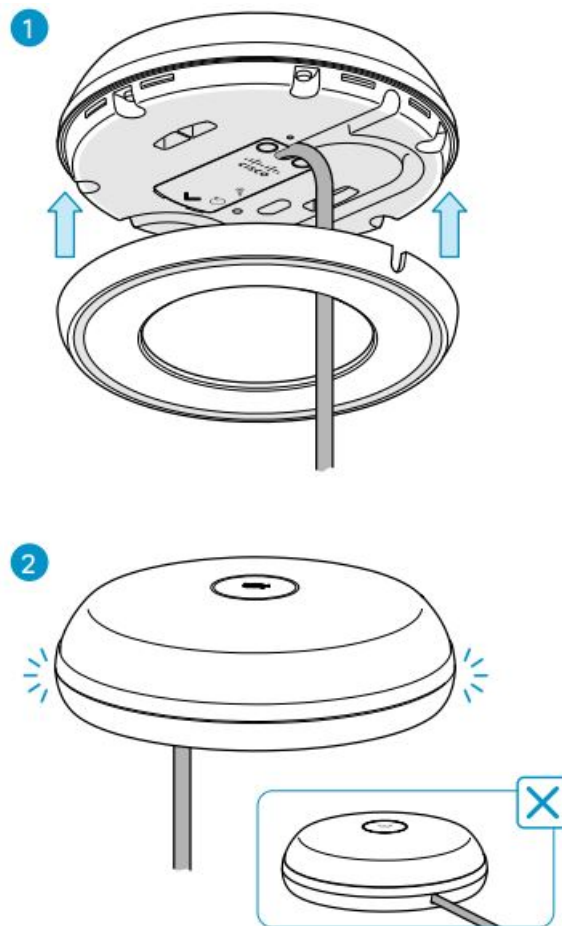


## Orientation

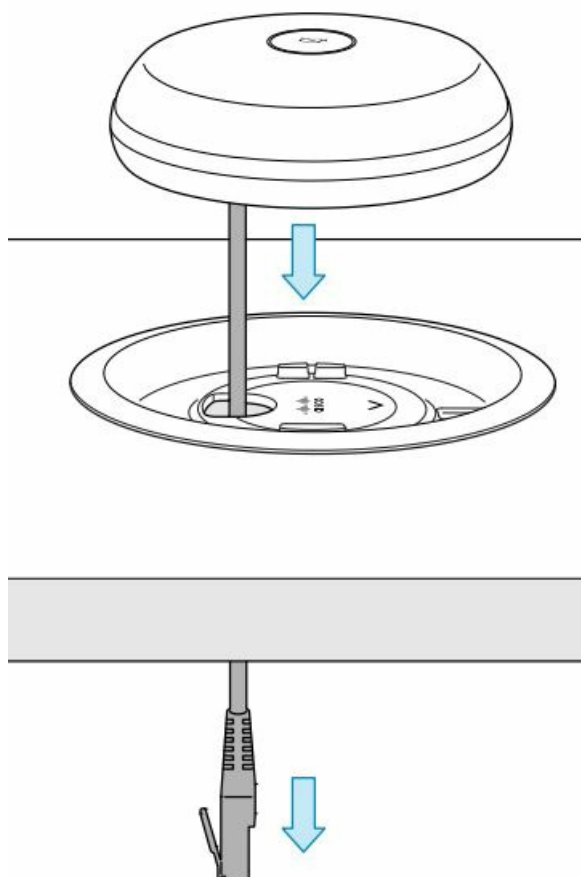


- For microphones placed along the centerline, the arrow should point away from the screen.
- For all other microphones, the arrow should point toward the participants, perpendicular to the nearest table edge.

## Attach the cable cover

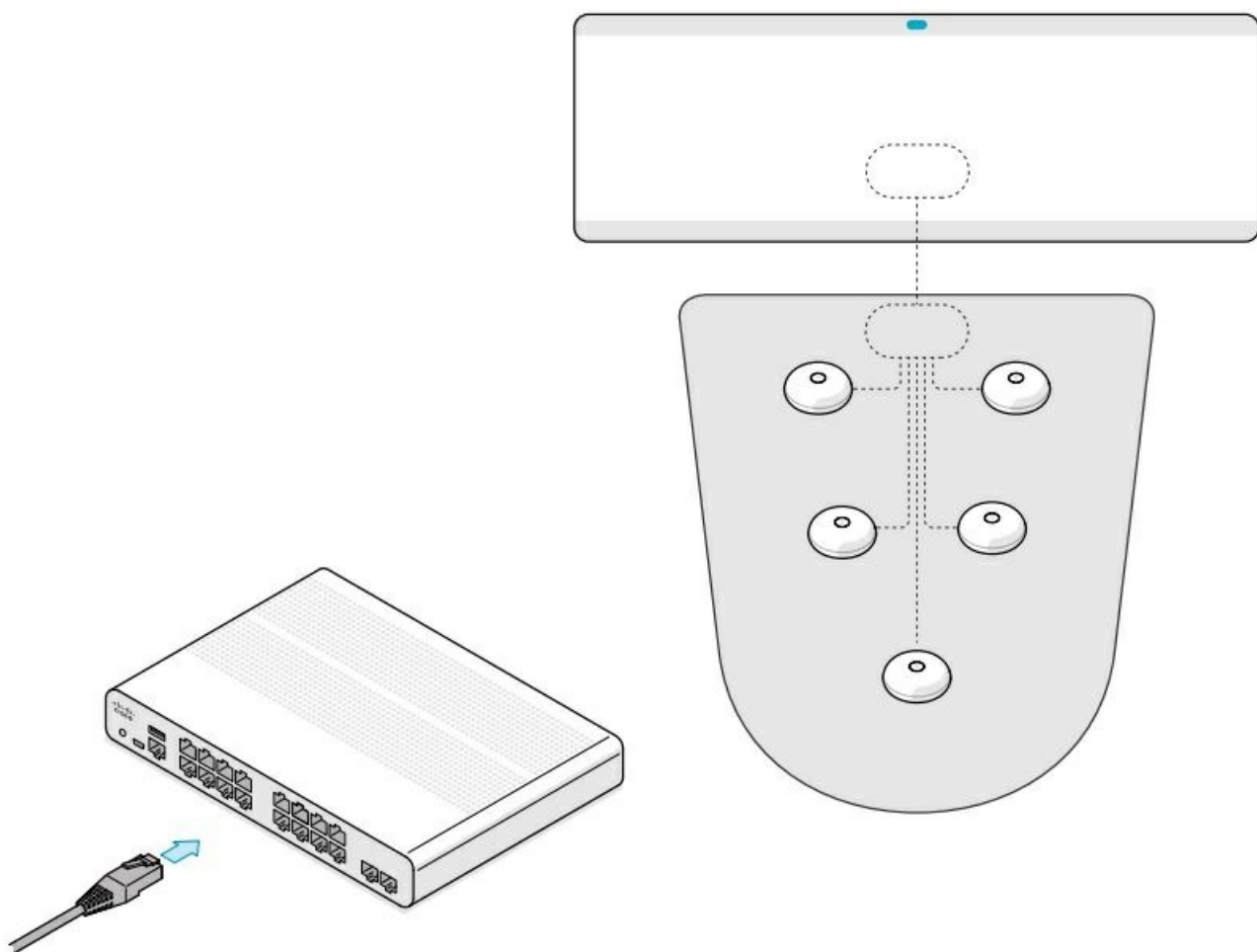


**Place microphone on the adapter.**

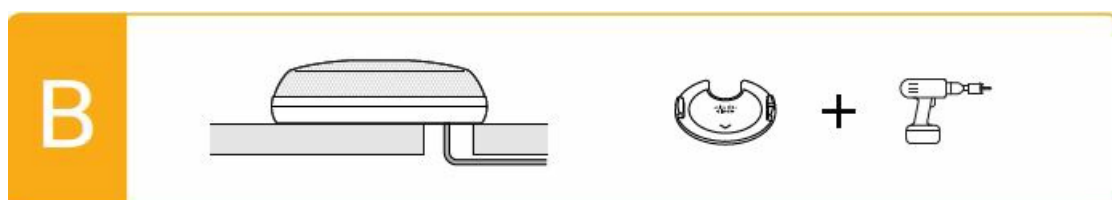


**Connect the microphones to the switch.**

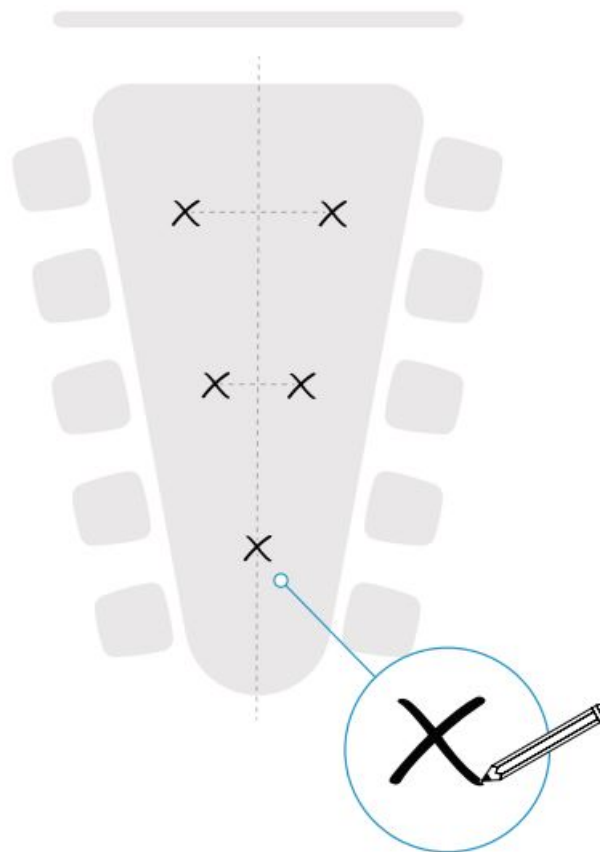




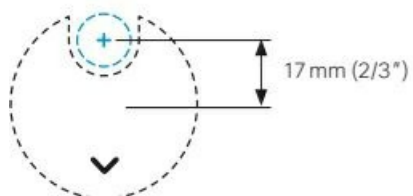
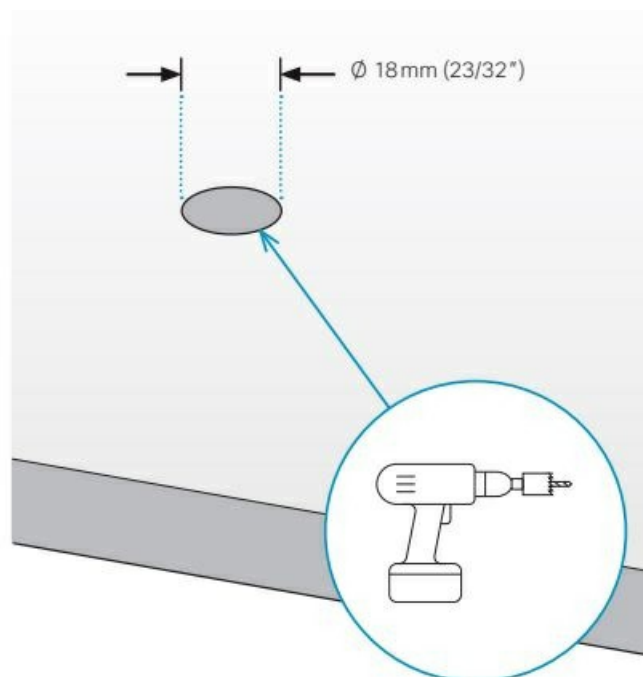
When the power is on, run the microphone setup from the Settings menu on the touch controller.



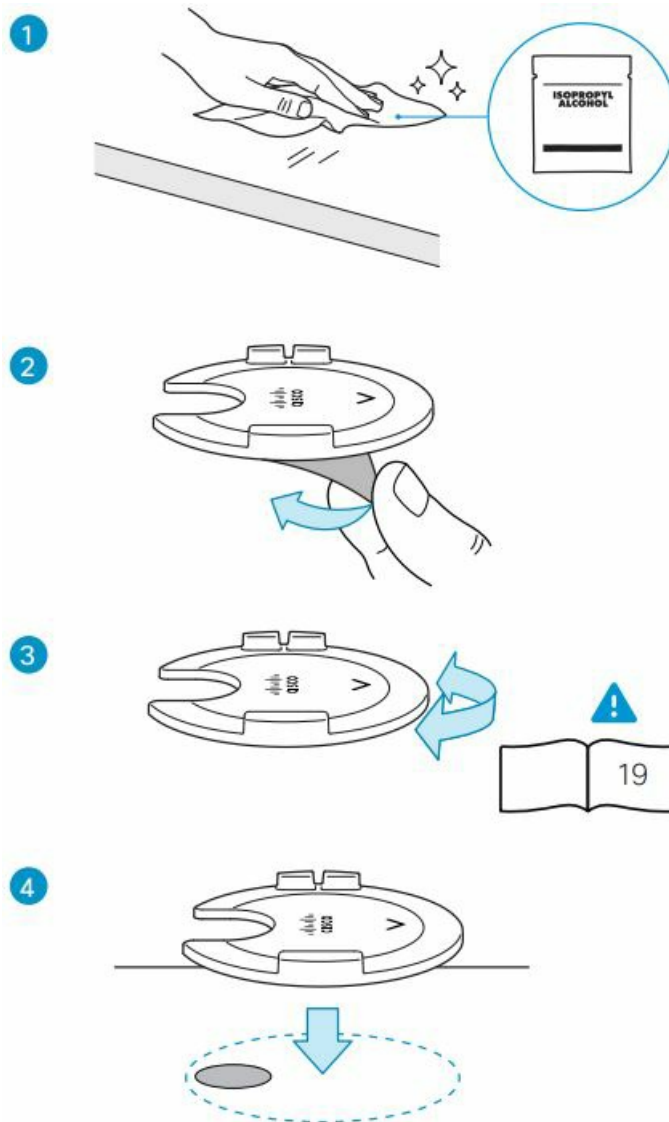
1. Refer to the placement plan. Measure and mark the positions of the adapters.



2. Drill the holes. Note that the adapter center is slightly offset from the hole.



3. Install the adapter next to the hole.



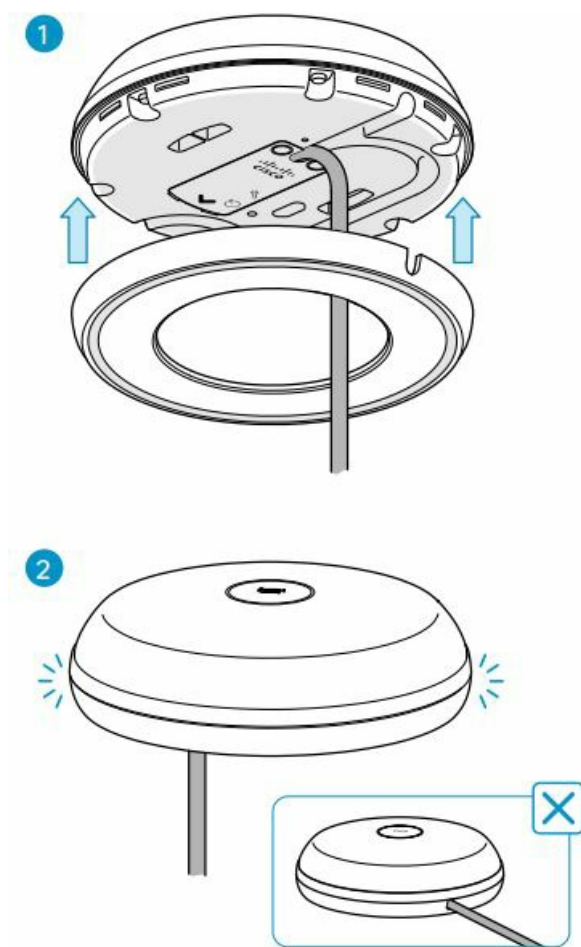
## Orientation



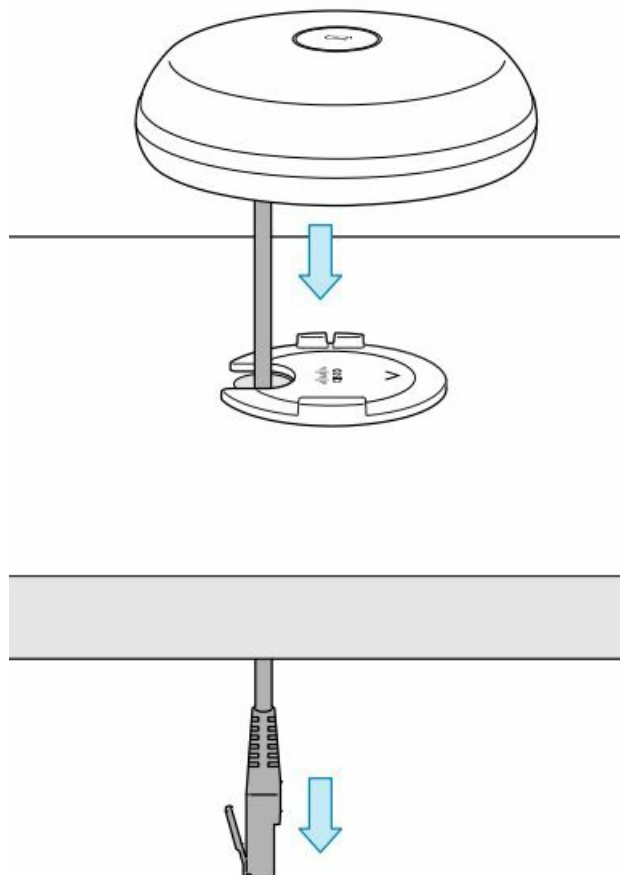
For microphones placed along the centerline, the arrow should point away from the screen.

For all other microphones, the arrow should point toward the participants, perpendicular to the nearest table edge.

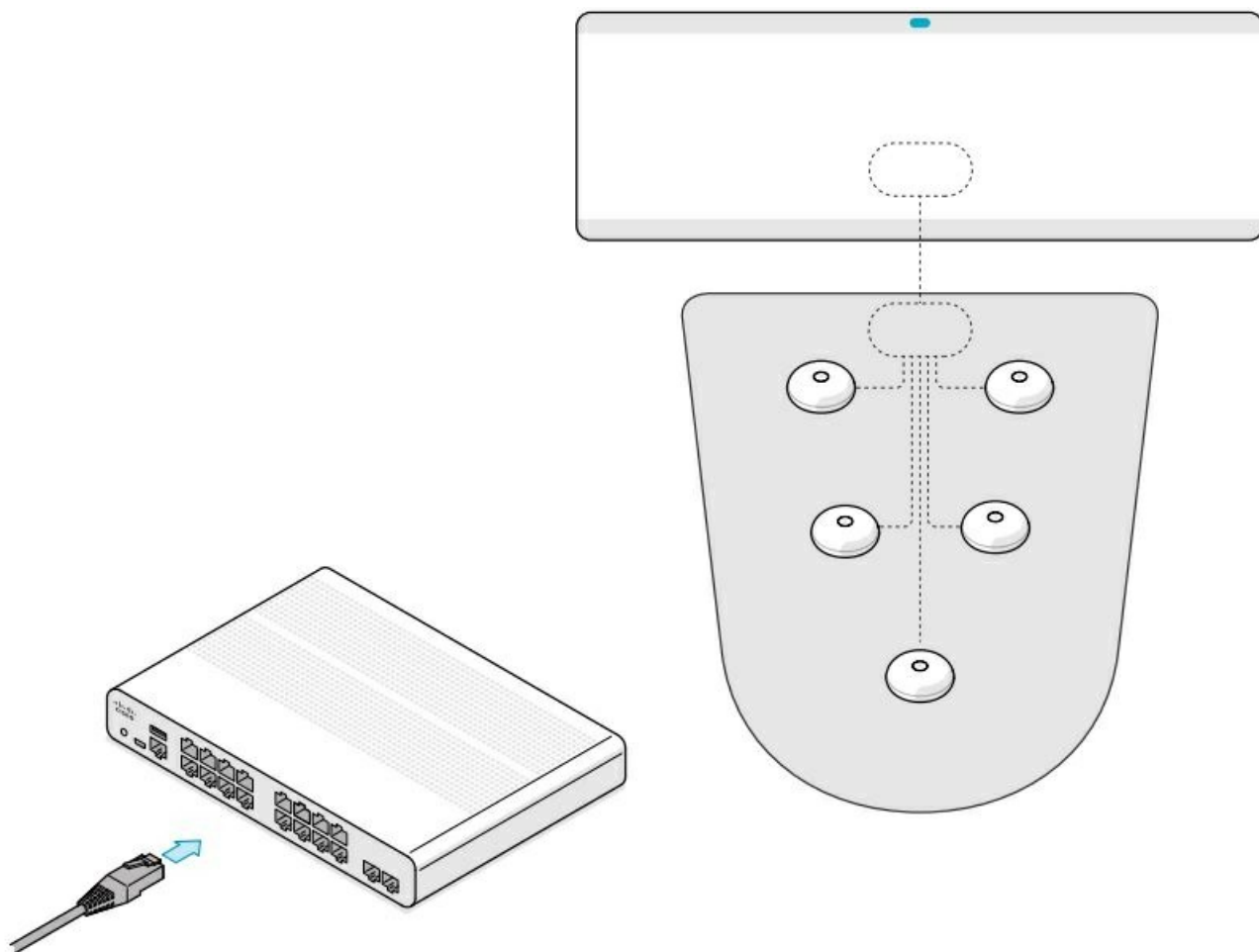
4. Attach the cable cover.



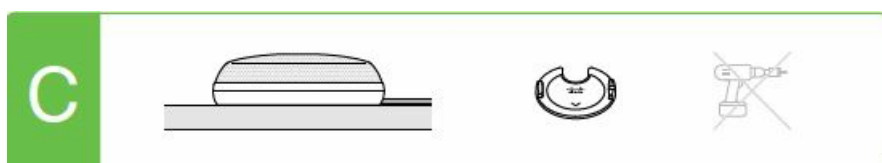
5. Place microphone on the adapter.



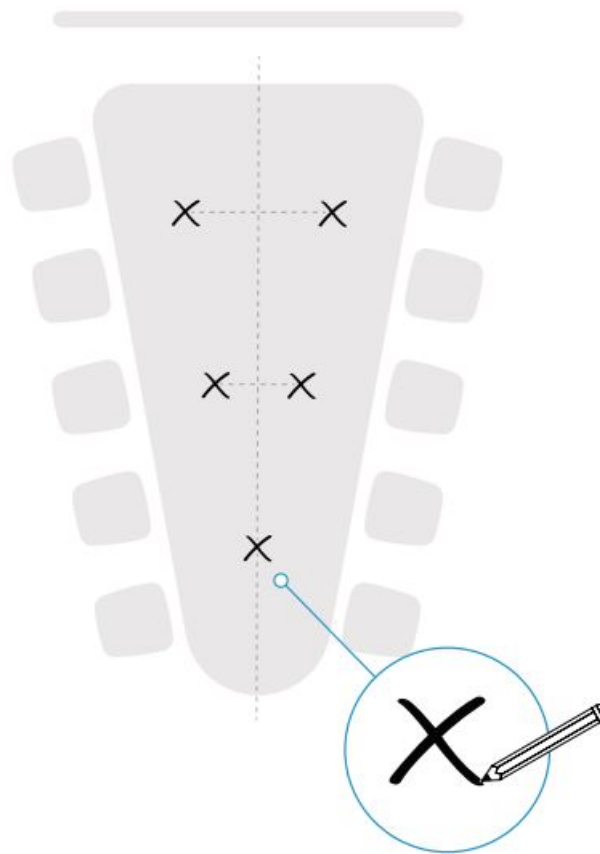
6. Connect the microphones to the switch.



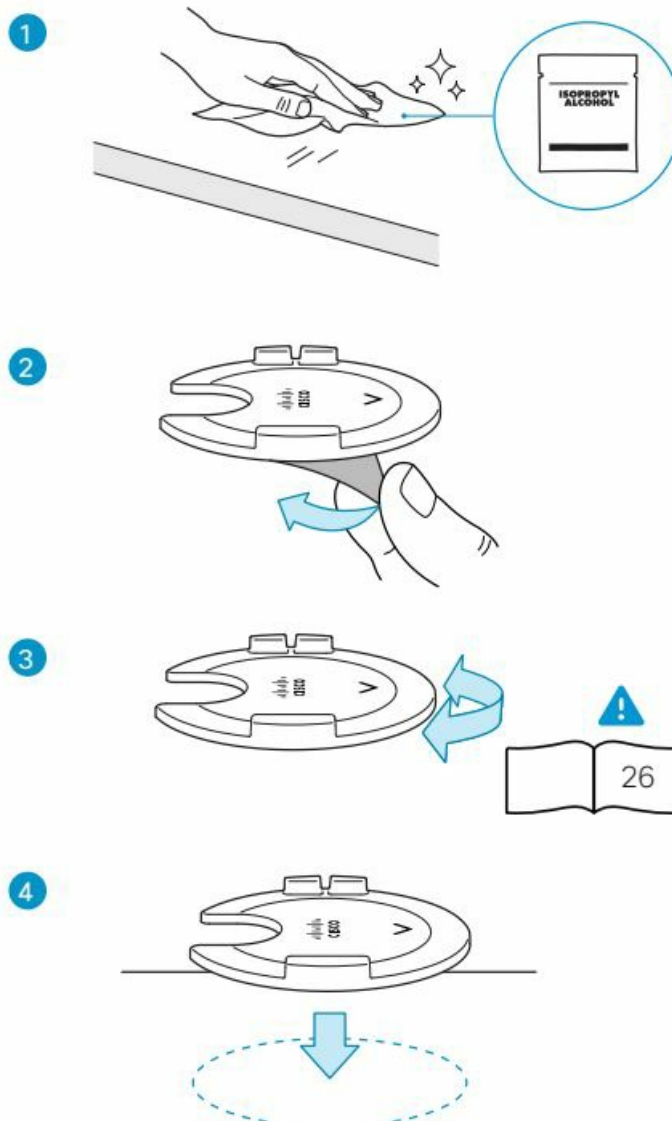
7. When the power is on, run the microphone setup from the Settings menu on the touch controller.



1. Refer to the placement plan. Measure and mark the positions of the adapters.



2. Orient the adapter with the arrow.



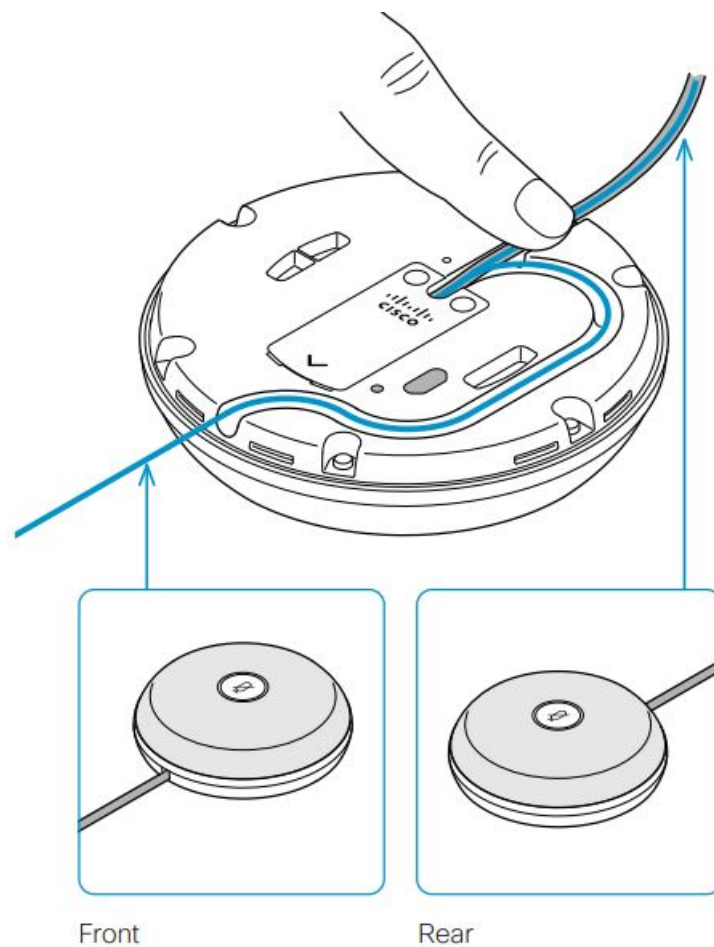
## Orientation



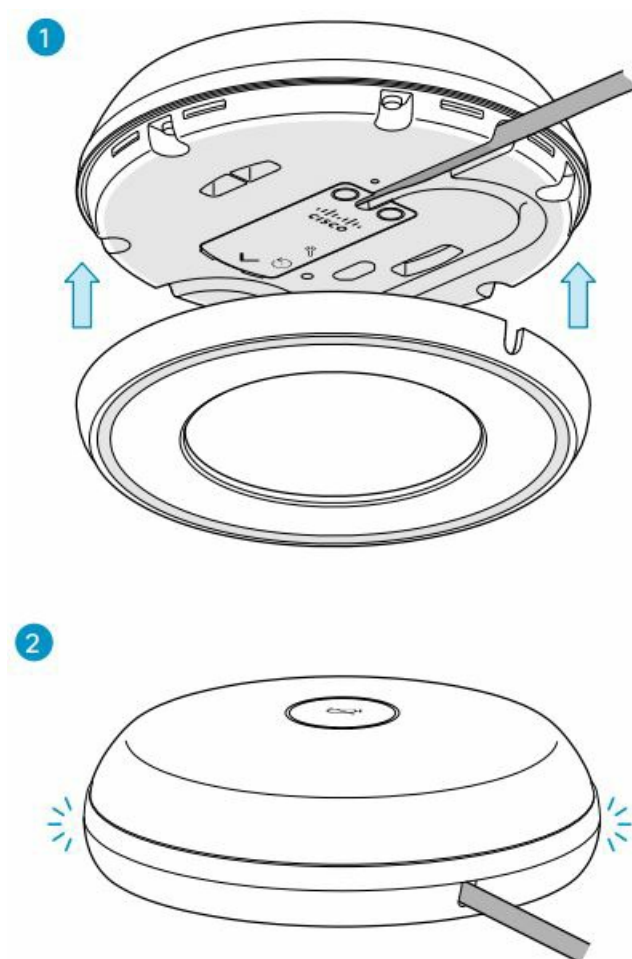
For microphones placed along the centerline, the arrow should point away from the screen.

For all other microphones, the arrow should point toward the participants, perpendicular to the nearest table edge.

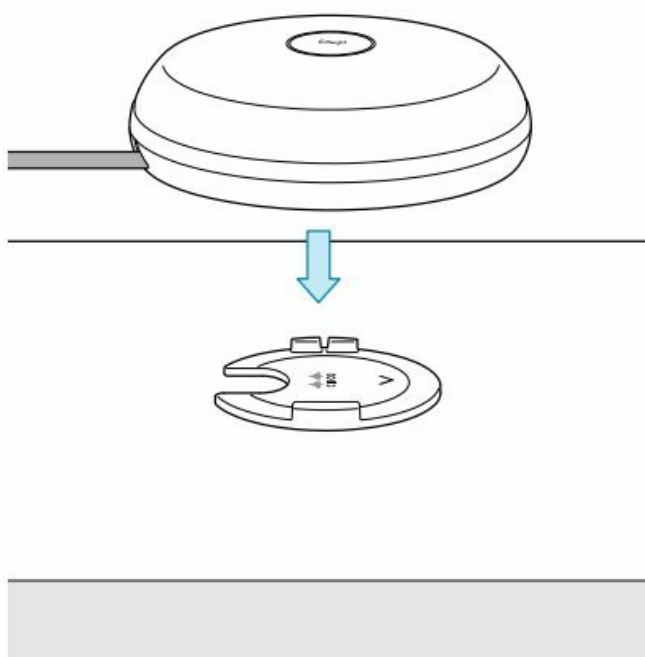
3. Route the cable in the desired direction.



4. Attach the cable cover.

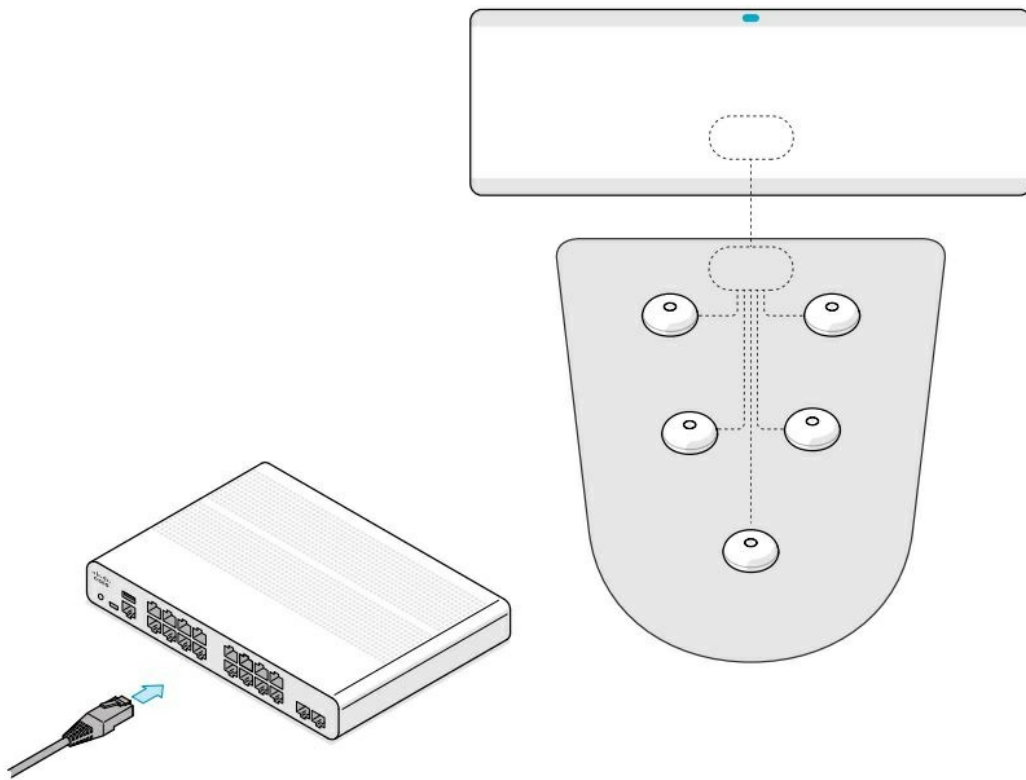


5. Place microphone on the adapter.



6. Connect the microphones to the switch.



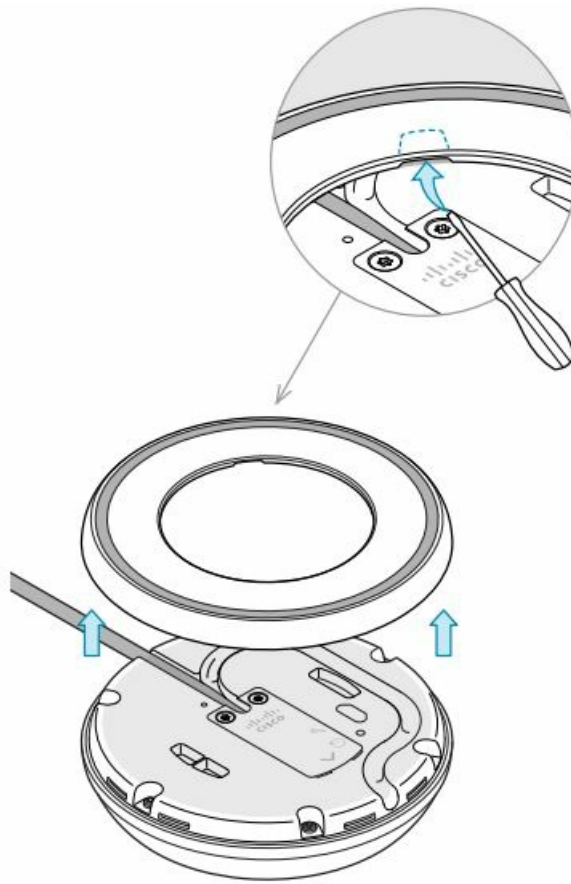


7. When the power is on, run the microphone setup from the Settings menu on the touch controller.



## Removing the cable cover

If you need to remove the cable cover, you can use a flat-head screwdriver in the notch on the underside to help separate the pieces.



This device complies with Part 15 of the FCC Rules. Operation is subject to the following two conditions:  
(1) this device may not cause harmful interference, and (2) this device must accept any interference received, including interference that may cause undesired operation.

<https://help.webex.com>

<https://www.cisco.com/go/panorama-installation>

Visit one of these websites to find out more about setup, management, and use of this product. Use the first link if your device is registered to the Cisco Webex service and the second link if the device is registered to another service.

<https://www.cisco.com/go/projectworkplace>

Explore the Cisco Project Workplace to find inspiration and guidelines when preparing your office or meeting room for video conferencing.

Cisco Systems Inc.  
Corporate Headquarters  
170 West Tasman Dr.  
San Jose, CA 95134  
USA

<https://www.cisco.com/go/offices>






Cisco and the Cisco logo are trademarks or registered trademarks of Cisco and/or its affiliates in the U.S. and other countries. To view a list of Cisco trademarks, go to this URL: [www.cisco.com/go/trademarks](https://www.cisco.com/go/trademarks). Third-party trademarks mentioned are the property of their respective owners. The use of the word partner does not imply a partnership relationship between Cisco and any other company. (1110R)

© 2023 Cisco Systems, Inc. All rights reserved.

**Documents / Resources**

 <p>Cisco Pro Table Microphone Pro Installation Guide</p> <ul style="list-style-type: none"><li>1. Unpack the product</li><li>2. Mount the microphone</li><li>3. Connect the microphone</li><li>4. Test the microphone</li><li>5. Troubleshooting</li><li>6. Appendix A</li></ul> <p></p>	<p><b>CISCO Pro Table Microphone</b> [pdf] Installation Guide</p> <p>Pro Table Microphone, Pro, Table Microphone, Microphone</p>
---	--

References

-  [Webex Help Center](#)
-  [Global Contacts - Cisco](#)
-  [Cisco Room Series - Install and Upgrade Guides - Cisco](#)
-  [Cisco Project Workplace | Seamless Collaboration](#)
-  [Cisco Trademarks - Cisco](#)