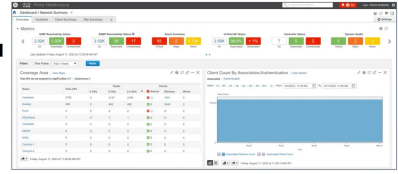


**CISCO Prime
Infrastructure 3.8.1
Data DNA Center**



CISCO Prime Infrastructure 3.8.1 Data DNA Center Instructions

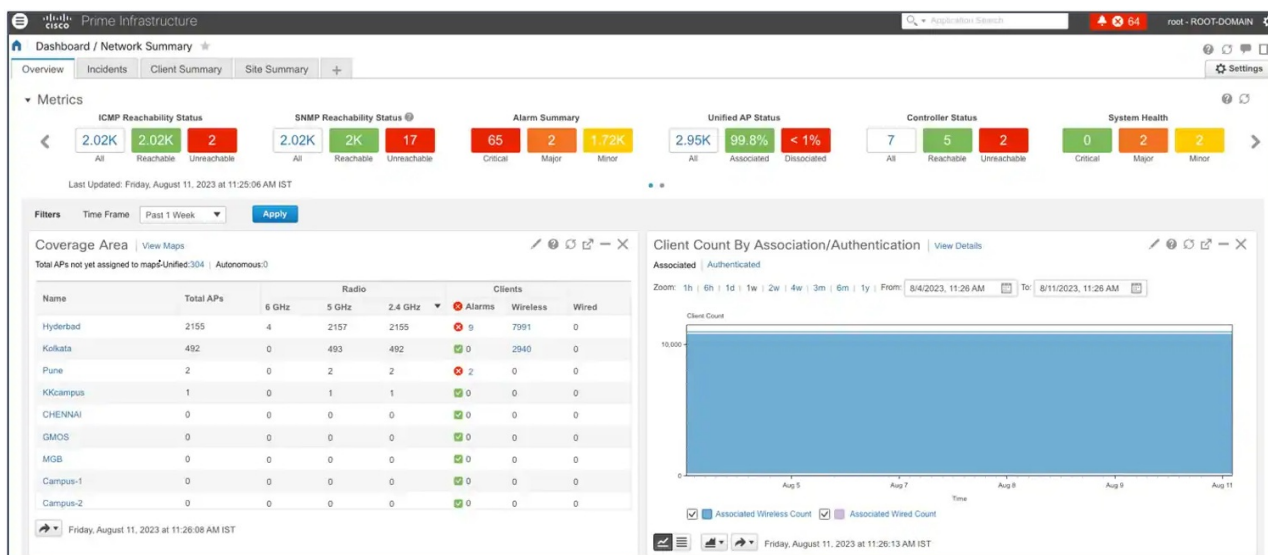
[Home](#) » [Cisco](#) » CISCO Prime Infrastructure 3.8.1 Data DNA Center Instructions 

Contents

- 1 [CISCO Prime Infrastructure 3.8.1 Data DNA Center](#)
- 2 [Product Information](#)
- 3 [Product Usage Instructions](#)
- 4 [Migrating Data](#)
 - 4.1 [Before you begin](#)
- 5 [Important Notes](#)
- 6 [Documents / Resources](#)
 - 6.1 [References](#)
- 7 [Related Posts](#)



CISCO Prime Infrastructure 3.8.1 Data DNA Center



Product Information

- **Product Name:** Cisco Prime Infrastructure 3.8.1
- **Target Migration Product:** Cisco DNA Center

Product Usage Instructions

• Step 1: Access Migration Interface

Ensure that you are logged in to Cisco Prime Infrastructure.

• Step 2: Configure Cisco DNA Center Coexistence

1. Navigate to Administration > Settings > System Settings > General.
2. Select “Cisco DNA Center coexistence” and click on “Launch Cisco DNA Center coexistence”.

• Step 3: Add Cisco DNA Center Server

Enter the required details for the Cisco DNA Center server:

- Server IP Address or Hostname
- Username
- Password
- Confirm Password

• Step 4: Save and Check Server Reachability

Click “Save” to verify server reachability.

• Step 5: Proceed to Sync Settings

Click “Next” to move to Sync Settings.

• Step 6: Configure Sync Settings

In the Sync Settings window, adjust the settings as needed:

- Check Supported/Available Limits for Site Groups/Site Maps and Devices.
- Enable automatic synchronization of data and include newly added data during dynamic synchronization.

• Step 7 – Step 13: Additional Configuration

Follow the on-screen instructions to complete the migration process, including enabling CMX settings and migrating user-defined CLI Templates if required.

Frequently Asked Questions (FAQ)

- **Q: Can I integrate multiple Cisco DNA Center servers simultaneously?**

A: No, only one Cisco DNA Center server can be integrated at a time.

- **Q: What data can be automatically synchronized during dynamic synchronization?**

A: Newly created groups and devices can be automatically synchronized from Prime Infrastructure to Cisco DNA Center during dynamic synchronization if configured accordingly.

This chapter provides helpful information on the compatibility matrix, migrating data, and important points related to migrating Cisco Prime Infrastructure to the Cisco DNA Center.

Migrating Data

Migrating Data from Cisco Prime Infrastructure 3.8.1 to Cisco Digital Network Architecture Center

Follow this procedure to access the Cisco Prime Infrastructure to Cisco DNA Center migration by logging in to Cisco Prime Infrastructure:

Before you begin

Ensure that:

- You have Root or Super user access privileges of Cisco Prime Infrastructure.
- You have access credentials to the Cisco DNA Center.
- You use Cisco Prime Infrastructure version 3.5 and above which is compatible with Cisco DNA Center versions mentioned in the Compatibility Matrix table.

Step By Step Guide

- **Step 1** Choose Administration > Settings > System Settings > General > Cisco DNA Center coexistence, and then click Launch Cisco DNA Center coexistence to open Prime Infrastructure – Cisco DNA Center Coexistence page.
- **Step 2** Click Add Cisco DNA Center Server.
- **Step 3** Enter the following Cisco DNA Center server details:
 - **a)** Server IP Address or Hostname.
 - **b)** Username
 - **c)** Password
 - **d)** Confirm Password

Note You can integrate only one Cisco DNA Center server at a time.
- **Step 4** Click Save, to check server reachability.
- **Step 5** Click Next to go to Sync Settings.
- **Step 6** In the Sync Settings window:
 - **a)** You can check for the Supported/Available Limits of the Cisco DNA Center server for the Site Groups/Site Maps and Devices. Supported/Available Limits of Cisco DNA Center will vary based on the Cisco DNA Center server core(s) count.

The Supported/Available limits are specified in the below table:

Table 1: Supported/Available Limits

DNAC Core	Site Groups/Site Maps	Devices
44-Core	500	1000
56-Core	1000	4000
112-Core	2000	5000

- **b)** Select the Enables automatic synchronization of data integrated with CiscoDNACenter checkbox to synchronize already migrated data set for the groups and devices from Prime Infrastructure to Cisco DNA Center automatically post modification.
- **c)** Select the Include newly added data during dynamic synchronization checkbox to move newly created groups and newly added devices during dynamic synchronization if any, from Prime Infrastructure to Cisco DNA Center automatically post addition.

Note

Dynamic Synchronization does not support add, update, or delete operations for the already migrated data and will not synchronize the data automatically for the following components:

- Maps
- CLI Templates
- ISE Server

Maps, CLI templates, and ISE server migration is achieved only by Force Sync.

- This check box is enabled only if you select the Enables automatic synchronization of data integrated with the Cisco DNA Center check box.
- During force synchronization, if the Enables automatic synchronization of data integrated with the Cisco DNA Center check box is enabled, any modifications that are made through force synchronization to the Location Group and Devices entities are dynamically synced in the Cisco DNA Center.
- If the Enables automatic synchronization of data integrated with the Cisco DNA Center check box is selected, CMX is dynamically assigned to Cisco DNA Center floor groups, when Cisco Prime Infrastructure imports maps to CMX. (Pre Req.: CMX dynamic sync works only on already migrated floor groups and CMX should exist in the Cisco DNA Center server for CMX dynamic sync.)
- **d)** If the Enable CMX settings checkbox is selected, CMX will be pushed with floor groups. If the Enable CMX settings check is not selected, CMX data will not be pushed to the Cisco DNA Center server.
- **e)** Select the Migrate User Defined CLI Templates checkbox to migrate the user-defined CLI Templates to the Cisco DNA Center.

- **Step 7** Click Next to go to the Select Groups page.

- **Step 8** In the Select Groups window:

- **a)** Select the location groups from the Cisco Prime Infrastructure Location Groups Selector pane. Upon selecting Site Groups, by default the buildings, floors, and associated maps also get selected.
 - Before adding Cisco Prime Infrastructure location groups to the Cisco DNA Center, you can check the limitation status bar for the selected/maximum devices and site groups of the Cisco DNA Center.
 - The Cisco Prime Infrastructure Location groups selector pane lists all the Prime Infrastructure groups irrespective of any virtual domain.

Note

- Cisco Prime Infrastructure does not migrate devices assigned in a “Campus” to the Cisco DNA Center when the co-existence tool is used.
- As a workaround, you can assign your devices to a “Building” or “Floor” type location group before using the co-existence tool.

- **Step 9** Click Next.

- **Step 10 In the CMX Credentials window:**

- **a)** You can view the list of associated CMX for selected groups with the following details:
 - Credential Status
 - Server IP address
 - Device Name
 - Username
 - Password
 - SSH Username
 - SSH Password
- **b)** You must update the SSH Username and SSH Password if it is not available for the respective CMX.
- **c)** If the associated CMX is not found, then click Next.

Note

When the Cisco Prime Infrastructure – Cisco DNA Center migration tool is active and auto sync is enabled, then CMX will be dynamically pushed to Cisco DNA Center floor groups. Cisco DNA Center will thereby track the location data for assigned groups.

Note

Step 11 In the Select CLI Templates window:

- **a)** You can view all the user-defined CLI templates applicable to the devices in the selected group.
 - **b)** You can choose the desired templates which need to be migrated.
- **Step 12** Click Next to migrate the selected templates.
 - **Step 13 In the Summary window:**
 - **a)** You can view the overall summary of selected location groups, devices, associated maps, user-defined CLI Templates, and CMX before migrating to the Cisco DNA Center.
 - **b)** You can view the groups, devices, maps, and CMX that are added, updated, and deleted under each respective tab.
 - **c)** You can also view the status of the last synced date and time.
 - **d)** You can view the additional info tab created for Catalyst 9800 devices, under the devices tab.
 - **Step 14** Click Submit, to migrate all the Location Groups, Devices, Maps, CLI Templates, and CMX from Prime Infrastructure to Cisco DNA Center.
 - **Step 15** Click Force Sync to push data to the Cisco DNA Center server after the first migration.


Important Notes

This section contains important notes about Cisco Prime Infrastructure – Cisco DNA Center migration:

- You can integrate only one Cisco DNA Center server at a time.
- Before you start the next migration, you must refresh the Prime Data Migration tool to display the accurate groups and site maps.

- You use a single session of the migration at a time for the same Cisco Prime Infrastructure server and Cisco DNA Center server pair.
- Once the CMX is migrated to the Cisco DNA Center, it will not be managed by Cisco Prime Infrastructure.
- Cisco DNA Center will not migrate the location and civic data of any building that has no floor.
- You can migrate the user-defined CLI Templates from Cisco Prime Infrastructure to Cisco DNA Center with the Select CLI Templates tab.
- Any legacy devices that are not supported by the Cisco DNA Center chosen for migration will be added to the Cisco DNA Center inventory under the Device Type column -“Unsupported Cisco Device”.
- Any device that falls under the “Default” group category cannot be migrated to the Cisco DNA Center.
- Any devices managed only with SNMP V1 credentials in Cisco Prime Infrastructure cannot be migrated to the Cisco DNA Center, whereas SNMP V2 and V3 can be migrated to the Cisco DNA Center.
- Only the basic information of the groups will be migrated, but not the rules and profiles assigned to the group.
- When you migrate the Cisco Catalyst 9800 series wireless controller from Cisco Prime Infrastructure to Cisco DNA Center, it needs the Netconf Port field details to move the device to a managed state.
- Once the migration is done, the user has to provide the Netconf credentials in the Cisco DNA Center server manually.
- After integration, while upgrading the Cisco DNA Center to an unsupported version, an error will be thrown as “Unsupported Version” and migration will stop.
- Access Points positioned in the maps in Cisco Prime Infrastructure will migrate to the Cisco DNA Center, only if we manage its WLC devices with CLI Credentials.
- For Composite template Migration – The associated template should not be a System template. If any composite template with a system template will not get migrated.
- During composite template migration, all the associated templates in the composite template should have the same device type. Otherwise, migration will fail.
- Specific composite template migration is not recommended till Cisco DNA Center 1.3.3.8 and 2.1.1.3. However, it works in later DNAC versions.
- DNAC Version 2.2.1.0 specific update.
 - Civic location is mandatory for Location Groups/Site Groups migration, especially for the Cisco DNA Center 2.2.1.0 version.
 - If any selected group does not have civic location configured, then all the selected Location Groups/Site groups migration will fail.

Documents / Resources

	<p>CISCO Prime Infrastructure 3.8.1 Data DNA Center [pdf] Instructions</p> <p>Prime Infrastructure 3.8.1 Data DNA Center, Infrastructure 3.8.1 Data DNA Center, Data DNA Center, DNA Center</p>
---	---

References

- [User Manual](#)

Manuals+. Privacy Policy

This website is an independent publication and is neither affiliated with nor endorsed by any of the trademark owners. The "Bluetooth®" word mark and logos are registered trademarks owned by Bluetooth SIG, Inc. The "Wi-Fi®" word mark and logos are registered trademarks owned by the Wi-Fi Alliance. Any use of these marks on this website does not imply any affiliation with or endorsement.