

# CISCO Install Enterprise NFVIS Using USB User Guide

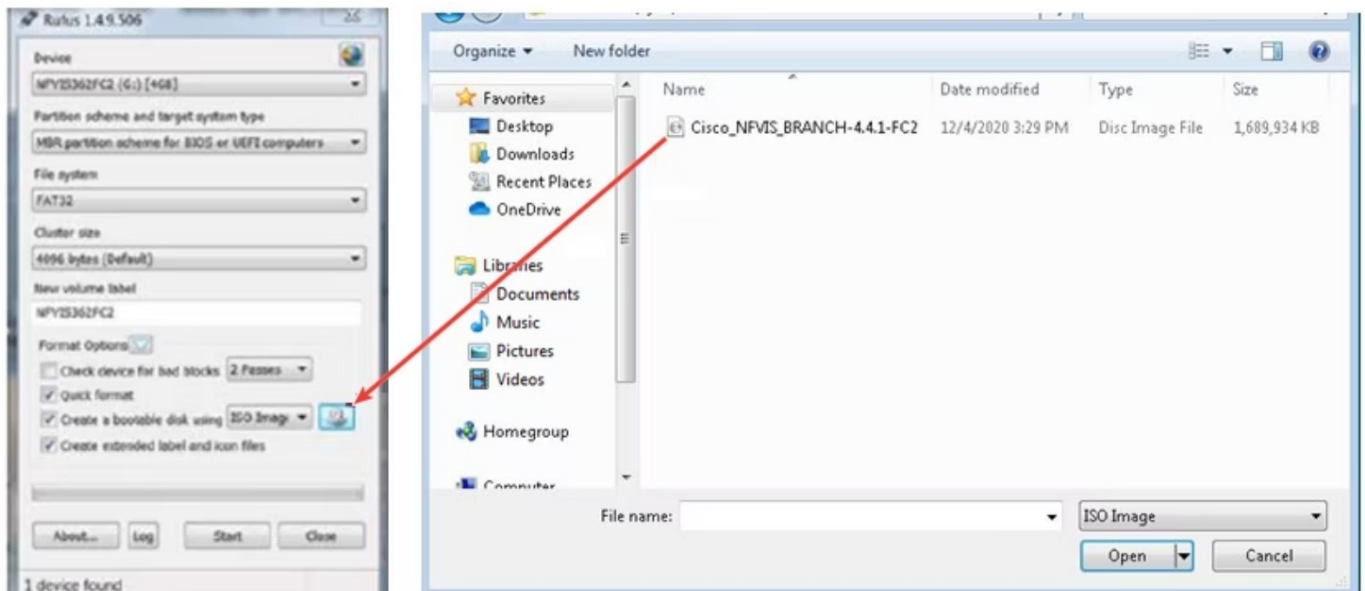
[Home](#) » [Cisco](#) » CISCO Install Enterprise NFVIS Using USB User Guide 

## Contents

- 1 CISCO Install Enterprise NFVIS Using USB
- 2 Product Information
- 3 Product Usage Instructions
- 4 FAQ
- 5 INSTALLATION STEPS
- 6 Default System Configuration on Cisco Catalyst 8200 UCPE
- 7 Documents / Resources
  - 7.1 References



## CISCO Install Enterprise NFVIS Using USB



## Product Information

### Specifications

- Product: Cisco Enterprise NFVIS
- Compatibility: Cisco Catalyst 8200 UCPE
- Installation Method: USB
- Password Requirement: BIOS password recommended for Cisco Catalyst 8200 UCPE

### Product Usage Instructions

#### Step 1: Create Bootable USB

Create a bootable USB with the NFVIS image using tools like Rufus in a Windows environment.

#### Step 2: Insert USB Device

Insert the USB device into one of the USB slots in the device.

#### Step 3: Power On System

Power on the system and during boot up, press the F6 key.

#### Step 4: Select Boot Device

Use the arrow keys to select your USB device as the boot device.

#### Step 5: Installation and Login

Wait for the installation to complete. Once done, log in to the system with username 'admin' and password 'Admin123#'. Follow the on-screen instructions to set a new password.

#### Step 6: Verify Installation Status

You can verify the installation status using the System API or command line interface as per the NFVIS user guide.

### FAQ

- **Q: What should I do if I encounter issues during installation?**
  - A: If you encounter any issues during installation, refer to the troubleshooting section of the user guide or contact Cisco support for assistance.
- **Q: Can I change the default username and password after installation?**
  - A: Yes, it is recommended to change the default username and password after installation for security reasons. You can follow the on-screen instructions to change the password.

### Before you begin

For Cisco Catalyst 8200 UCPE installation ensure that you install NFVIS only on one drive and only that drive be present at the time of installation. For Cisco Catalyst 8200 UCPE, it is recommended to set the BIOS password after you log in to NFVIS. To set the BIOS password, use the host action change-bios-password command. Without this step, you will not be able to select the device to install NFVIS.

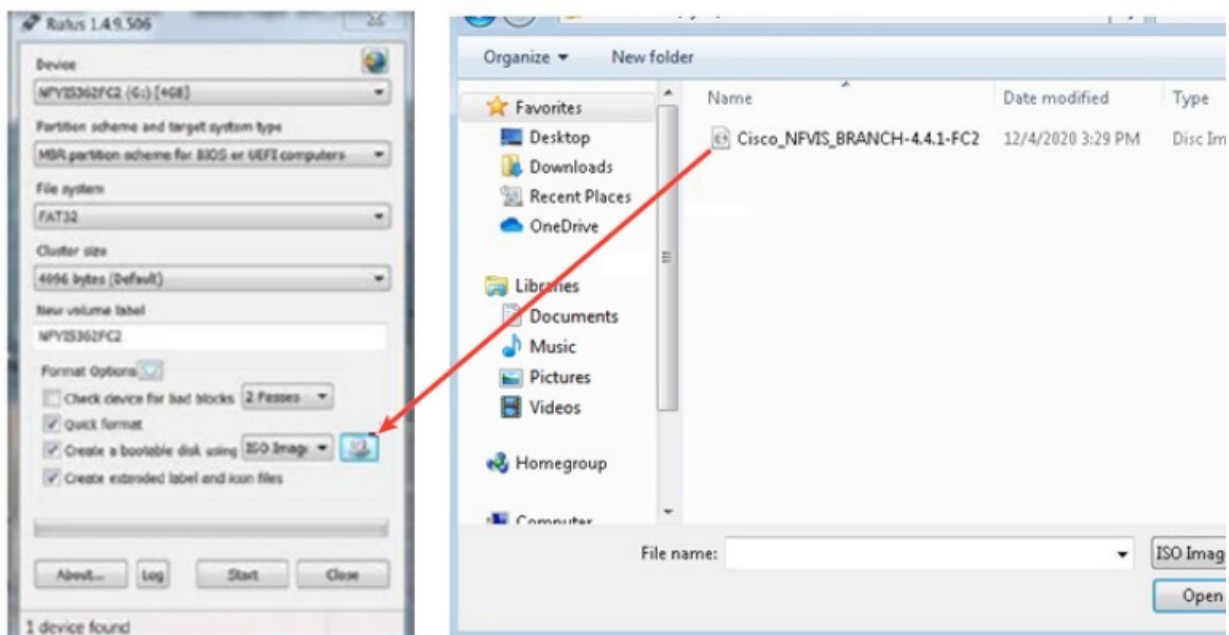
- Step 1 Create a bootable USB with an NFVIS image.

In this example, we used Rufus utility in a Windows environment. Rufus utility can be downloaded at <https://rufus.akeo.ie>

For this example, the following parameters were used to burn bootable NFVIS USB device:

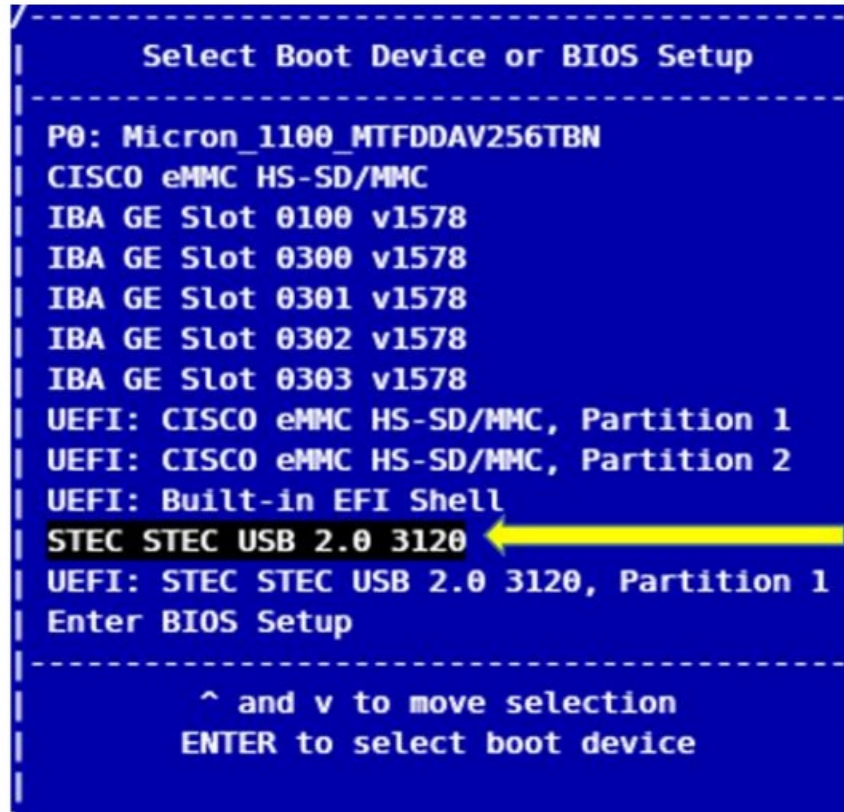
## INSTALLATION STEPS

- Device: USB stick
- Partition scheme: MBR
- Filesystem: FAT32
- Cluster size: use the default
- Volume label: use default
- Quick format: checked
- Create bootable: select "ISO Image" and click the next icon then choose NFVIS image.
- Create extended label: checked
- Press Start and wait for completion.
- Eject USB thumb drive



- Step 2 Insert the USB device in one of the USB slots in the device.
- Step 3 Power on the system.
- Step 4 During system boot-up, press F6 key.
  - Press <DEL> or <F2> to enter setup, <F6> Boot Menu, <F12> Network Boot in 5 seconds or press any key to continue.
- Step 5 Once you press F6, you will see the following screenshot to select which device you want to boot from. Select your USB device.
  - In the following screenshot example, there is STEC USB being used. That display will vary depending on your usb device

vendor. Use the arrow key to select that device.



- Step 6 Wait until installation is completed. The system will be rebooted once the installation is done.
- Step 7 Log into the system with username admin and Admin123# as a default password
- Step 8 You will be prompted and asked to change your password at the first login. You must set a strong password per the on-screen instructions to proceed.
- Step 9 You can verify the installation status using the System API or command line interface per the NFVIS user guide.

## What to do next

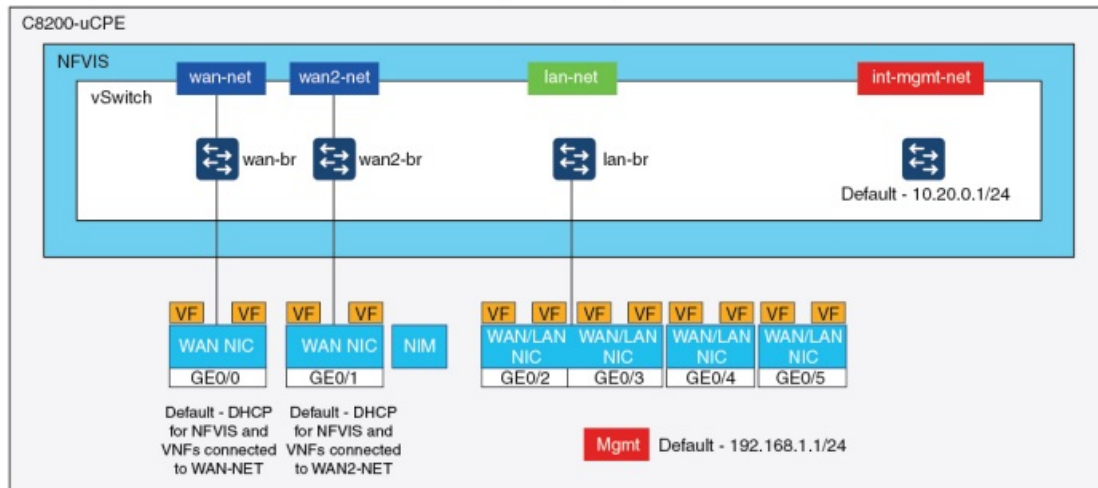
You can verify the default configuration, and set up initial IP configuration to launch the Cisco Enterprise NFV portal.

- Default System Configuration on Cisco Catalyst 8200 UCPE, on page 3

## Default System Configuration on Cisco Catalyst 8200 UCPE

The diagram below illustrates the default network configuration of Cisco Enterprise NFVIS with the Cisco ENCS.

## Catalyst 8200 Edge uCPE Factory Default Configuration



- NFVIS can be accessed by default through the WAN port or GE0/2 LAN port for management.
- WAN network (wannet and wan2net) and WAN bridge (wanbr and wan2br) are set to enable DHCP by default. GE0 is associated with the WAN bridge and the WAN2 bridge by default.
- The management IP address 192.168.1.1 on Cisco Catalyst 8200 UCPE is accessible through GE0/2.
- GE0/2 is associated to the LAN bridge.
- An internal management network (int-mgmt-net) and bridge (int-mgmt-br) are created and internally used for system monitoring.

## Documents / Resources

**CISCO Install Enterprise NFWIS Using USB** [pdf] User Guide  
Install Enterprise NFWIS Using USB, Install, Enterprise NFWIS Using USB, NFWIS Using USB, U sing USB

## References

- [User Manual](#)

[Manuals+](#), [Privacy Policy](#)

This website is an independent publication and is neither affiliated with nor endorsed by any of the trademark owners. The "Bluetooth®" word mark and logos are registered trademarks owned by Bluetooth SIG, Inc. The "Wi-Fi®" word mark and logos are registered trademarks owned by the Wi-Fi Alliance. Any use of these marks on this website does not imply any affiliation with or endorsement.