



IEC6400 Edge Compute
Appliance UCS Firmware



CISCO IEC6400 Edge Compute Appliance UCS Firmware User Guide

[Home](#) » [Cisco](#) » CISCO IEC6400 Edge Compute Appliance UCS Firmware User Guide 

Contents

- [1 CISCO IEC6400 Edge Compute Appliance UCS Firmware](#)
- [2 Overview of the Cisco IEC6400 firmware upgrade](#)
- [3 Specifications](#)
- [4 Product Usage Instructions](#)
- [5 FAQs](#)
- [6 Documents / Resources](#)
 - [6.1 References](#)



CISCO IEC6400 Edge Compute Appliance UCS Firmware



Overview of the Cisco IEC6400 firmware upgrade

This guide describes how to upgrade the Cisco Integrated Management Controller (CIMC) and BIOS components of Cisco IEC6400 using the Host Upgrade Utility (HUU) software.

Note

The HUU software file does not update the IEC6400 gateway software.

HUU file details

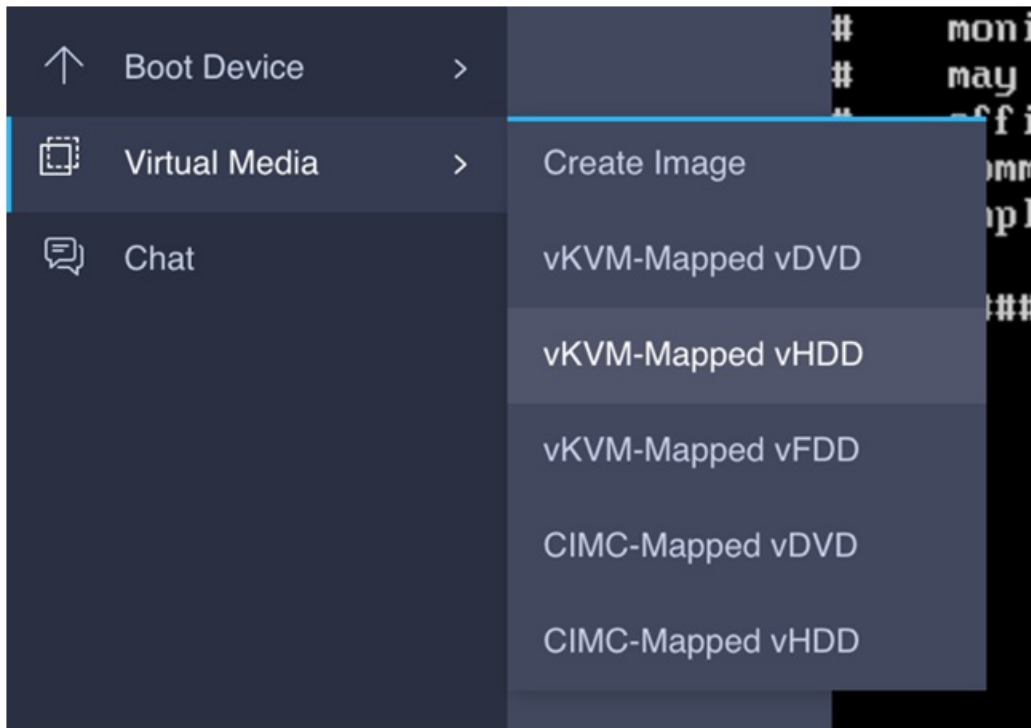
The IEC6400-HUU-4.2.3l.img file contains the following modules:

Component	Version
CIMC	4.2(3l)
BIOS	4.3.2f.0

Upgrade the CIMC and BIOS versions of IEC6400

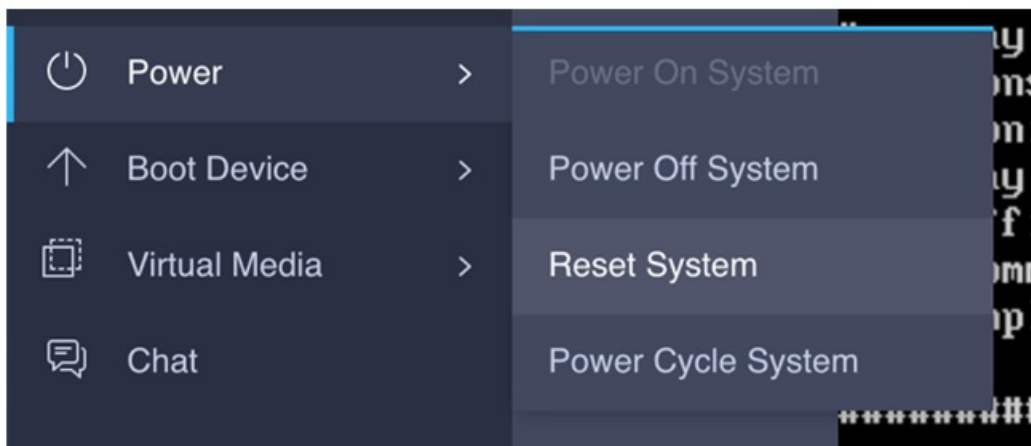
Ensure that you power on the IEC6400 gateway before performing this firmware upgrade.

- **Step 1** Log into the CIMC web application using your credentials.
- **Step 2** On the CIMC web application home page, click Launch vKVM to open Cisco vKVM console.
- **Step 3** Choose Virtual Media > vKVM-Mapped vHDD.

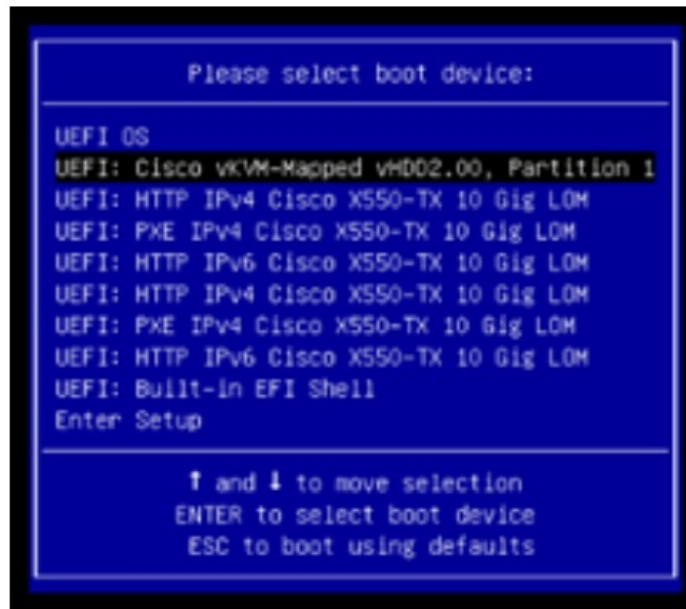


The Map Virtual Media – Removable Disk window appears.

- **Step 4** Click Browse and choose the IEC6400-HUU-4.2.3l.img HUU image file to connect it.
- **Step 5** Click Map Drive.
- **Step 6** Choose Power > Reset System, to reset the device.



- **Step 7** From the BIOS prompt, press F6 to enter the boot menu.
- **Step 8** In the boot device menu window, choose UEFI: Cisco vKVM-Mapped vHDD2.00, Partition 1, and press Enter to boot the image.



The HUU upgrade process checks the current versions of CIMC and BIOS. If the device prompts you to upgrade, enter from the keyboard to begin the upgrade process.

- **Step 9** Once the upgrade is complete, press Enter to activate the new versions of CIMC and BIOS and to reset the device.

```

Discovering components...
This package will perform the following upgrades:
BIOS : C220M6.4.2.3a.0.1029220536 -> C220M6.4.3.2e.0.1130231848
CIMC : 4.2(3b) -> 4.2(3j)
Proceed with the update?
Response: y
Proceeding with the update...

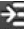
Update started... DO NOT REBOOT OR POWER OFF THE HOST!

Update process completed. Status: ('ExtendedMessages': ('BIOS': ['Firmware copied successfully.', 'CIMC update is in progress.', 'Update triggered successfully.', 'Validating Image', 'Writing Image', 'Firmware updated successfully.'], 'CIMC': ['Copying files is in-progress.', 'Firmware update triggered successfully.', 'Updating firmware - 45%', 'Firmware updated successfully - 100%', '100%', 'PercentComplete': '100%', 'TaskState': 'Completed', 'EndTime': '2022-01-01 02:05:35.133000', 'Name': 'Update', 'Id': '1', 'Messages': ('BIOS': 'Firmware Update Successful', 'CIMC': 'Firmware Update Successful'), 'StartTime': '2022-01-01 02:00:24.118259']
Press [Enter] to activate firmwares and reboot

```

You must remain connected until the process completes.

Verify the CIMC and BIOS versions of IEC6400

- **Step 1** Log into the CIMC web application using your credentials.
- **Step 2** Click on  the left corner.
- **Step 3** Choose Admin > Firmware management to display the current versions of the CIMC and BIOS.

Cisco Integrated Management Controller					
Admin / Firmware Management ★					
Firmware Management					
<input type="button" value="Update"/> <input type="button" value="Activate"/>					
	Component	Running Version	Backup Version	Bootloader Version	Status
<input type="checkbox"/>	BMC	4.2(3l)	4.3(4.241063)	4.2(3l)	Completed Successfully
<input type="checkbox"/>	BIOS	C220M6.4.3.2f.0_URWB	C220M6.4.3.2e.0_URWB	N/A	Completed Successfully

Specifications

- Product: Cisco IEC6400 Edge Compute Appliance
- Firmware Upgrade Guide: Release 4.2.3l
- CIMC Version: 4.2(3l)
- BIOS Version: 4.3.2f.0

Product Usage Instructions

Upgrade the CIMC and BIOS versions of IEC6400

1. Ensure that you power on the IEC6400 gateway before performing the firmware upgrade.
2. Log into the CIMC web application using your credentials.
3. Click Launch vKVM to open Cisco vKVM console.
4. Choose Virtual Media > vKVM-Mapped vHDD.
5. Click Browse and select the IEC6400-HUU-4.2.3l.img HUU image file.
6. Click Map Drive.
7. Choose Power > Reset System to reset the device.
8. Press F6 at the BIOS prompt to enter the boot menu.
9. In the boot device menu window, select UEFI: Cisco vKVM-Mapped vHDD2.00, Partition 1, and press Enter to boot the image.
10. If prompted to upgrade, enter 'y' from the keyboard to start the upgrade process.
11. After the upgrade is complete, press Enter to activate the new versions of CIMC and BIOS and reset the device.

Verify the CIMC and BIOS versions of IEC6400


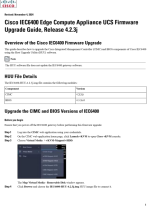
1. Log into the CIMC web application using your credentials.
2. Click on the left corner icon.
3. Choose Admin > Firmware management to view the current versions of CIMC and BIOS.

FAQs

Q: Does the HUU software update the IEC6400 gateway software?

A: No, the HUU software file does not update the IEC6400 gateway software. It is specifically for upgrading the CIMC and BIOS components.

Documents / Resources

	<p>CISCO IEC6400 Edge Compute Appliance UCS Firmware [pdf] User Guide</p> <p>IEC6400, IEC6400 Edge Compute Appliance UCS Firmware, Edge Compute Appliance UCS Firmware, Compute Appliance UCS Firmware, Appliance UCS Firmware, UCS Firmware, Firmware</p>
	<p>CISCO IEC6400 Edge Compute Appliance UCS Firmware [pdf] User Guide</p> <p>IEC6400, IEC6400 Edge Compute Appliance UCS Firmware, Edge Compute Appliance UCS Firmware, Appliance UCS Firmware, UCS Firmware, Firmware</p>

References

- [User Manual](#)

[Manuals+](#), [Privacy Policy](#)

This website is an independent publication and is neither affiliated with nor endorsed by any of the trademark owners. The "Bluetooth®" word mark and logos are registered trademarks owned by Bluetooth SIG, Inc. The "Wi-Fi®" word mark and logos are registered trademarks owned by the Wi-Fi Alliance. Any use of these marks on this website does not imply any affiliation with or endorsement.