

## CISCO Enterprise NFVIS Using USB Software User Guide

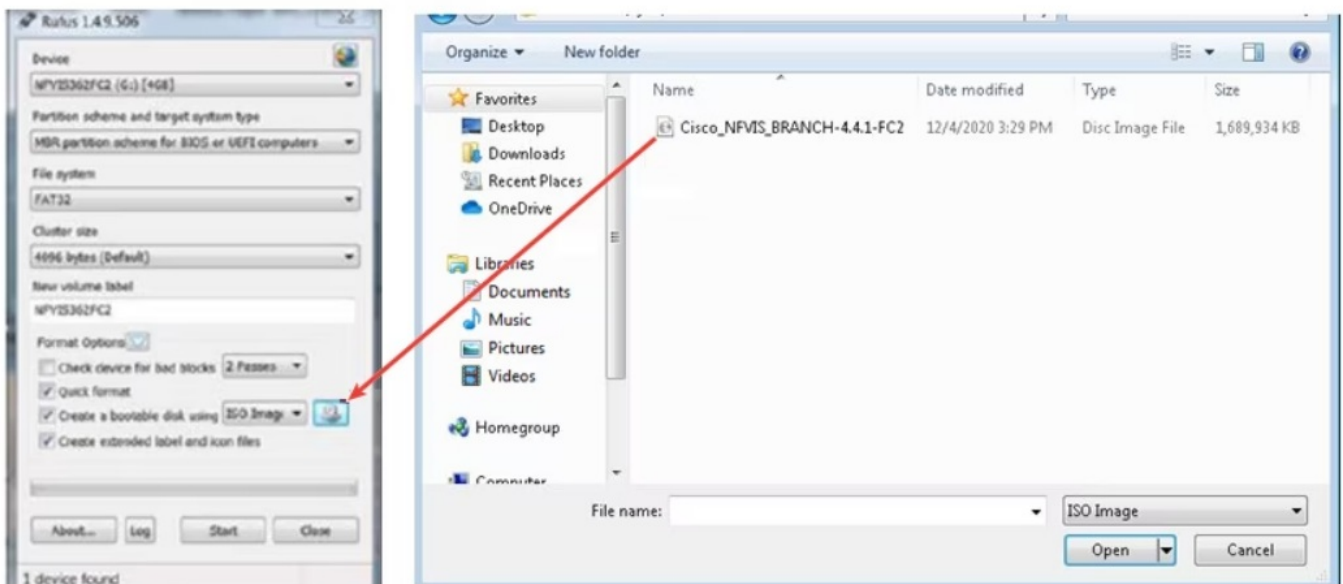
[Home](#) » [Cisco](#) » CISCO Enterprise NFVIS Using USB Software User Guide 

### Contents

- [1 CISCO Enterprise NFVIS Using USB Software](#)
- [2 Product Usage Instructions](#)
- [3 Install Cisco Enterprise NFVIS Using USB](#)
- [4 Default System Configuration on Cisco Catalyst 8200 UCPE](#)
- [5 Documents / Resources](#)
  - [5.1 References](#)
- [6 Related Posts](#)



### CISCO Enterprise NFVIS Using USB Software



## Specifications

- **Product Name:** Cisco Enterprise NFVIS
- **Supported Device:** Cisco Catalyst 8200 UCPE
- **Installation Method:** USB

## Product Usage Instructions

### Step 1: Create a bootable USB with an NFVIS image

To install Cisco Enterprise NFVIS using USB, follow these steps:

1. Download the Rufus utility from <https://rufus.akeo.ie/>.
2. Launch the Rufus utility.
3. Select the NFVIS image file.
4. Choose the USB drive to create a bootable device.
5. Click on the “Start” button and wait for the process to complete.
6. Eject the USB thumb drive.

### Step 2: Insert the USB device and power on the system

Follow these steps to continue the installation:

2. Insert the bootable USB device into one of the USB slots in the Cisco ENCS5104 system.
3. Power on the system.
4. During system boot-up, press the F6 key.

### Step 3: Select the boot device

Select the USB device as the boot device using the following steps:

3. Press the Up or Down arrow key to enter the setup menu.
4. Select “Boot Menu”.
5. Select “Network Boot” in 5 seconds or press any key to continue.
6. Use the arrow keys to select the USB device from the list.

### Step 4: Wait for installation completion

Wait until the installation process is completed. The system will be automatically rebooted once the installation is done.

### Step 5: Login and change password

After the reboot, follow these steps to log into the system:

5. Log into the system using the default username “admin” and default password “Admin123#”.

6. Upon login, you will be prompted to change your password. Follow the on-screen instructions to set a strong password.

## What to do next

After successfully logging in, you can verify the installation status using the System API or command line interface as described in the NFVIS user guide. You can also proceed to verify the default configuration and set up the initial IP configuration to launch the Cisco Enterprise NFV portal.

## FAQ

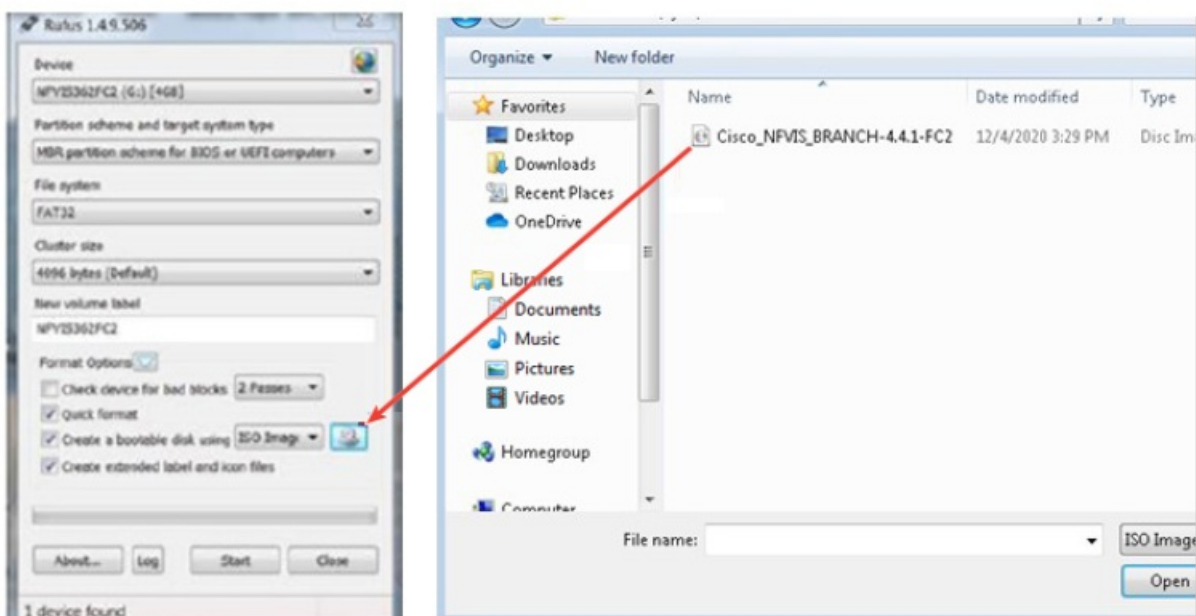
- **Q: Can I install NFVIS on multiple drives?**
- **A:** No, it is recommended to install NFVIS only on one drive during the installation process.
- **Q: Should I set a BIOS password before installing NFVIS on Cisco Catalyst 8200 UCPE?**
- **A:** Yes, it is recommended to set the BIOS password after logging in to NFVIS. Use the “hostaction change-bios-password” command to set the BIOS password.
- **Q: How can I verify the default configuration after installation?**
- **A:** You can verify the default configuration and set up the initial IP configuration to launch the Cisco Enterprise NFV portal. Refer to the NFVIS user guide for detailed instructions.

## Install Cisco Enterprise NFVIS Using USB

### Before you begin

For Cisco Catalyst 8200 UCPE installation ensure that you install NFVIS only on one drive and only that drive be present at the time of installation. For Cisco Catalyst 8200 UCPE, it is recommended to set the BIOS password after you log in to NFVIS. To set the BIOS password, use the host action change-bios-password command. Without this step, you will not be able to select the device to install NFVIS.

### Step 1



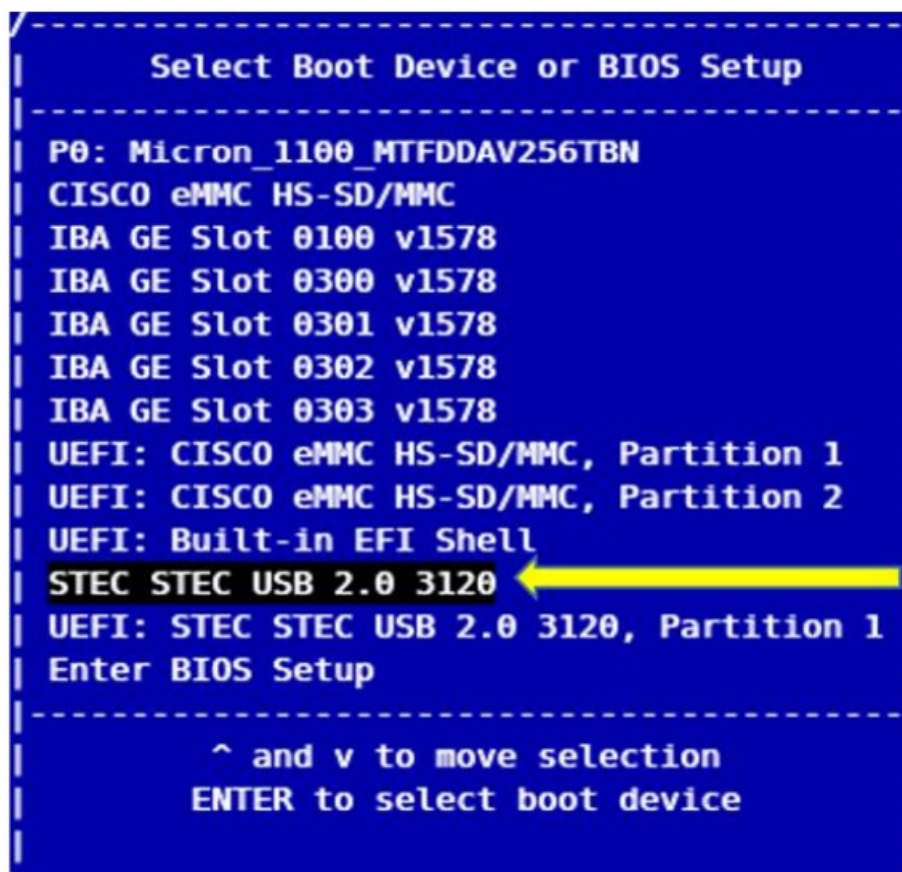
Create a bootable USB with an NFVIS image.

In this example, we used the Rufus utility in a Windows environment. Rufus utility can be downloaded at <https://rufus.akeo.ie/>.

For this example, the following parameters were used to burn bootable NFVIS USB device:

- **Device:** USB stick
- **Partition scheme:** MBR
- **Filesystem:** FAT32
- **Cluster size:** use the default
- **Volume label:** use default
- **Quick format:** checked
- **Create bootable:** select "ISO Image" and click the next icon then choose NFVIS image.
- **Create extended label:** checked

Press Start and wait for completion. Eject USB thumb drive



**Step 2:** Insert the USB device in one of the USB slots in ENCS5104.

**Step 3;** Power on the system.

**Step 4;** During system boot-up, press F6 key. Press <DEL> or <F2> to enter setup, <F6> Boot Menu, <F12> Network Boot in 5 seconds or press any key to continue.

**Step 5:** Once you press F6, you will see the following screenshot to select which device you want to boot from. Select your USB device. In the following screenshot example, STEC USB is being used. That display will vary depending on your usb device vendor. Use the arrow key to select that device

**Step 6:** Wait until installation is completed. The system will be rebooted once the installation is done.

**Step 7:** Log into the system with username admin and Admin123# as a default password

**Step 8:** You will be prompted and asked to change your password at the first login. You must set a strong password per the on-screen instruction to proceed.

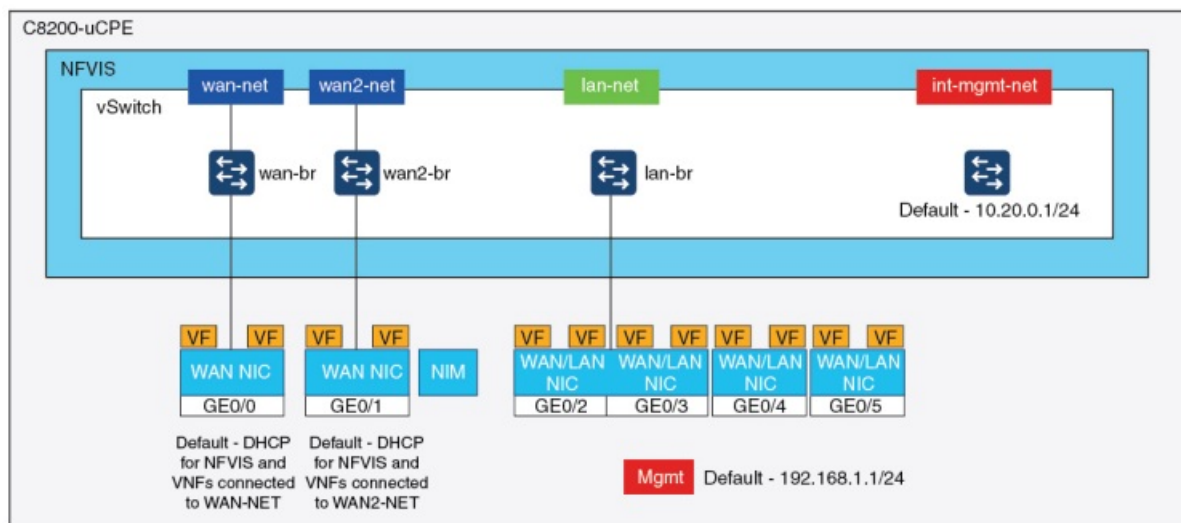
**Step 9:** You can verify the installation status using the System API or command line interface per the NFVIS user guide.

### What to do next

You can verify the default configuration, and set up initial IP configuration to launch the Cisco Enterprise NFV portal.

- Default System Configuration on Cisco Catalyst 8200 UCPE, on page 3

## Default System Configuration on Cisco Catalyst 8200 UCPE



The diagram below illustrates the default network configuration of Cisco Enterprise NFVIS with the Cisco ENCS.

- NFVIS can be accessed by default through the WAN port or GE0/2 LAN port for management.
- WAN network (wan-net and wan2-net) and WAN bridge (wan-br and wan2-br) are set to enable DHCP by default. GE0 is associated to WAN bridge and WAN2 bridge by default.
- The management IP address 192.168.1.1 on Cisco Catalyst 8200 UCPE is accessible through GE0/2.
- GE0/2 is associated to LAN bridge.
- An internal management network (int-mgmt-net) and bridge (int-mgmt-br) is created and internally used for system monitoring.

---

## Documents / Resources



**Cisco Enterprise NFVIS Using USB**

Version 1.0

Copyright © 2014 Cisco and/or its affiliates. All rights reserved. Cisco Confidential

## [CISCO Enterprise NFVIS Using USB Software](#) [pdf] User Guide

Catalyst 8200 UCPE, ENCS5104, Enterprise NFVIS Using USB Software, NFVIS Using USB Software, Using USB Software, USB Software, Software

## References

- [User Manual](#)

[Manuals+](#), [Privacy Policy](#)