



CISCO CCE-2000 Packaged Agent Deployment User Manual

[Home](#) » [Cisco](#) » CISCO CCE-2000 Packaged Agent Deployment User Manual 

CISCO CCE-2000 Packaged Agent Deployment



Contents

- [1 Upgrade Overview](#)
- [2 Upgrade Flow](#)
- [3 Silent Upgrade](#)
- [4 Documents / Resources](#)
 - [4.1 References](#)
- [5 Related Posts](#)

Upgrade Overview

Following are the two supported upgrade methods:

- **Common Ground Upgrades:** The Common Ground method is an in-place upgrade performed on your existing

virtual machine which involves upgrading the Packaged CCE and all other associated software hosted on it. If your hardware meets the requirements for this release, you can perform a Common Ground upgrade without acquiring additional hardware.

Note

- CCE components can be upgraded using common ground or technology refresh upgrade.
- Common Ground Upgrade is not supported if the platform upgrade from Windows Server 2016 and SQL Server 2017 to Windows Server 2019 and SQL Server 2019 is planned as part of upgrade process.
- Technology Refresh Upgrades: Use the Technology Refresh upgrade method to set up all the virtual machines (VMs) or the required set of VMs on a different hardware. You can also upgrade the solution components and the associated software hosted on it.

Note For better performance, Media Routing PG (MR PG), Dialer, and Agent PG should be on the same VM.

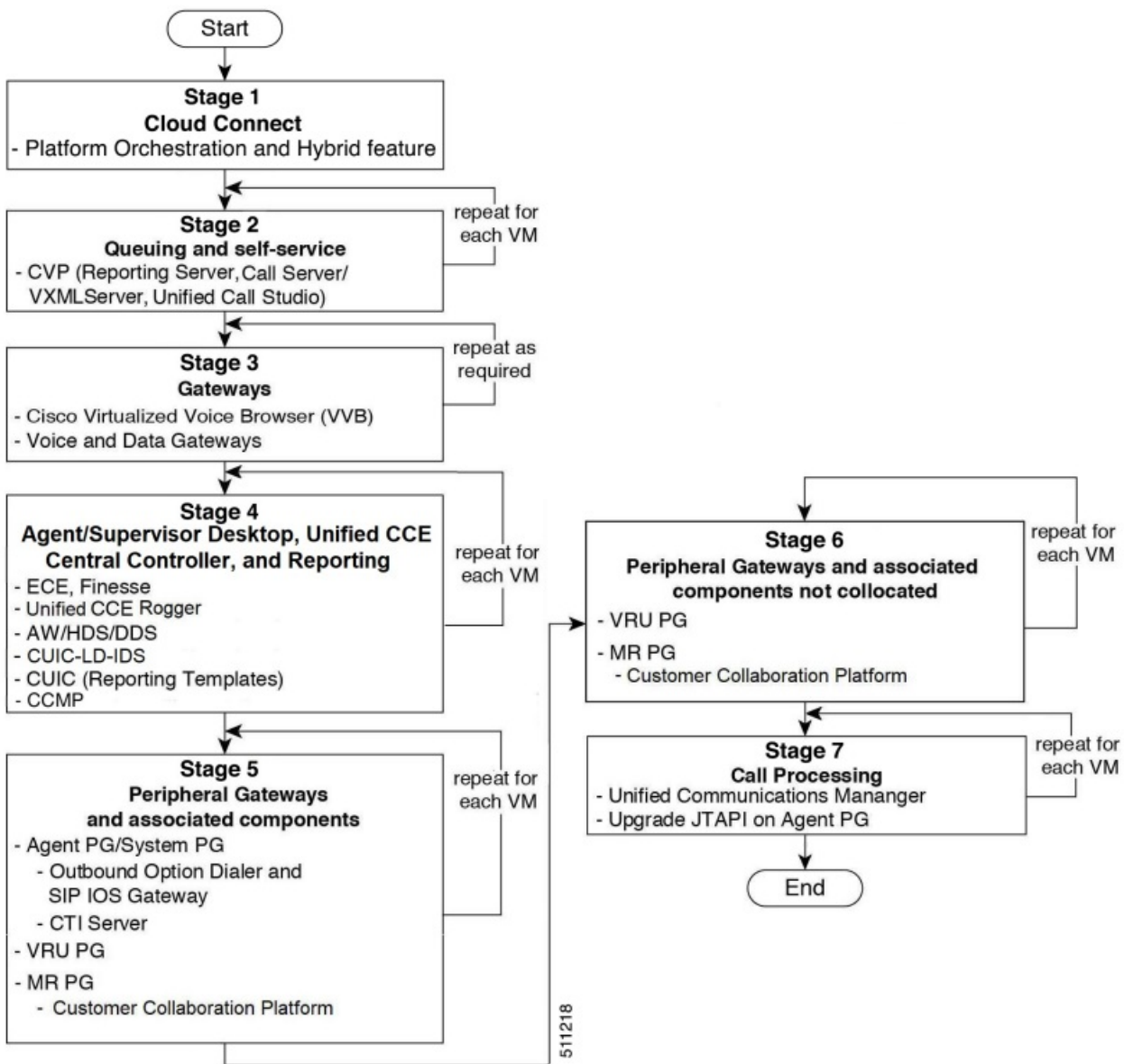
- Upgrade Flow, on page 1
- Silent Upgrade, on page 19
- Custom Trust store to Store Component Certificates, on page 19

Upgrade Flow

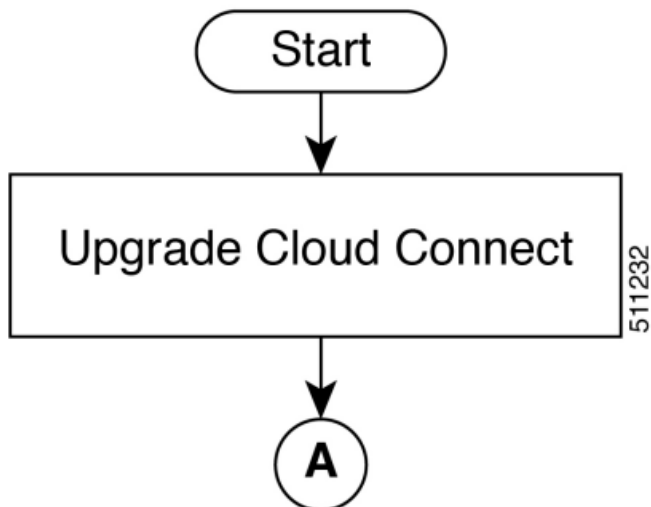
Upgrade Flowcharts for 2000 Agent Deployments

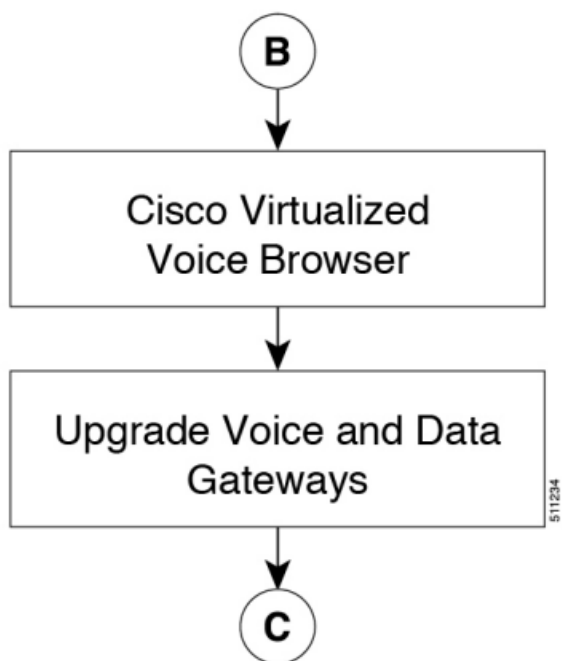
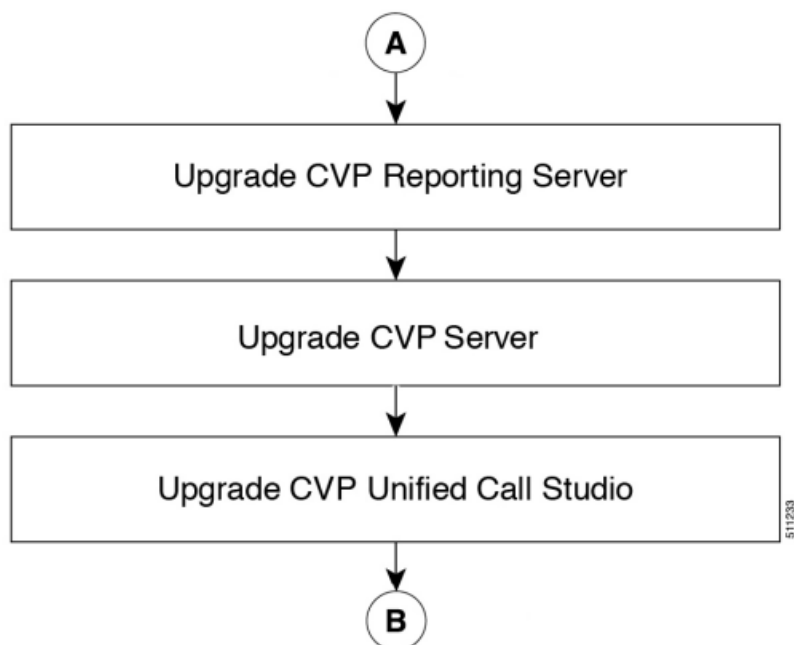
The following diagram illustrates the solution-level upgrade flow for the Packaged CCE 2000 Agent Deployment solution upgrade.

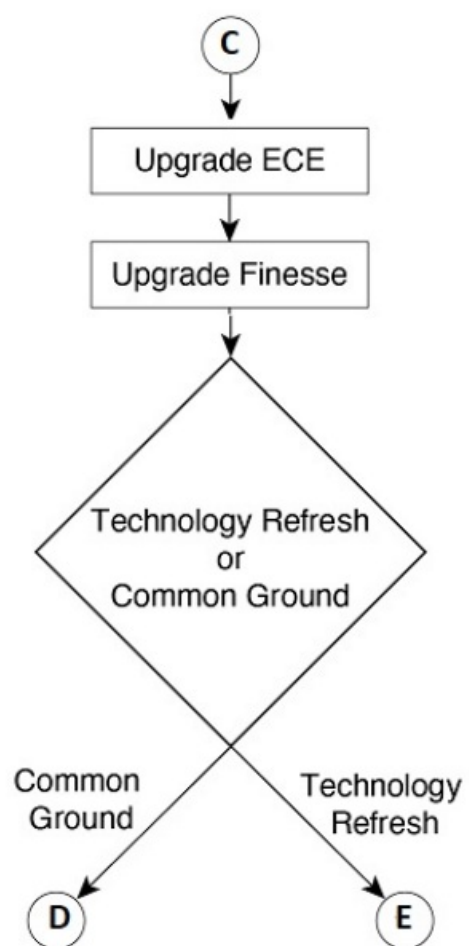
Note This flowchart is not applicable for redundant upgrade workflow.

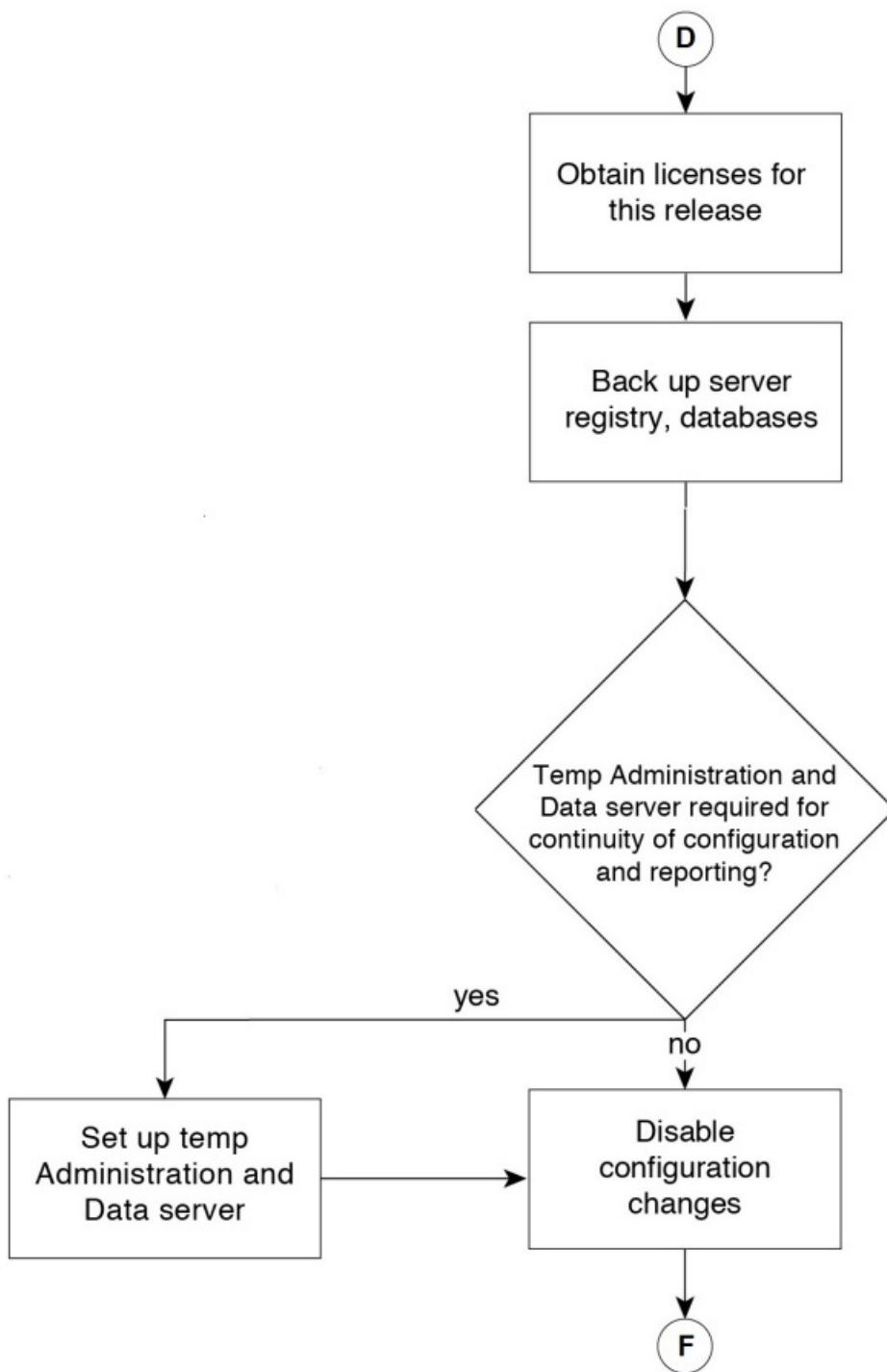


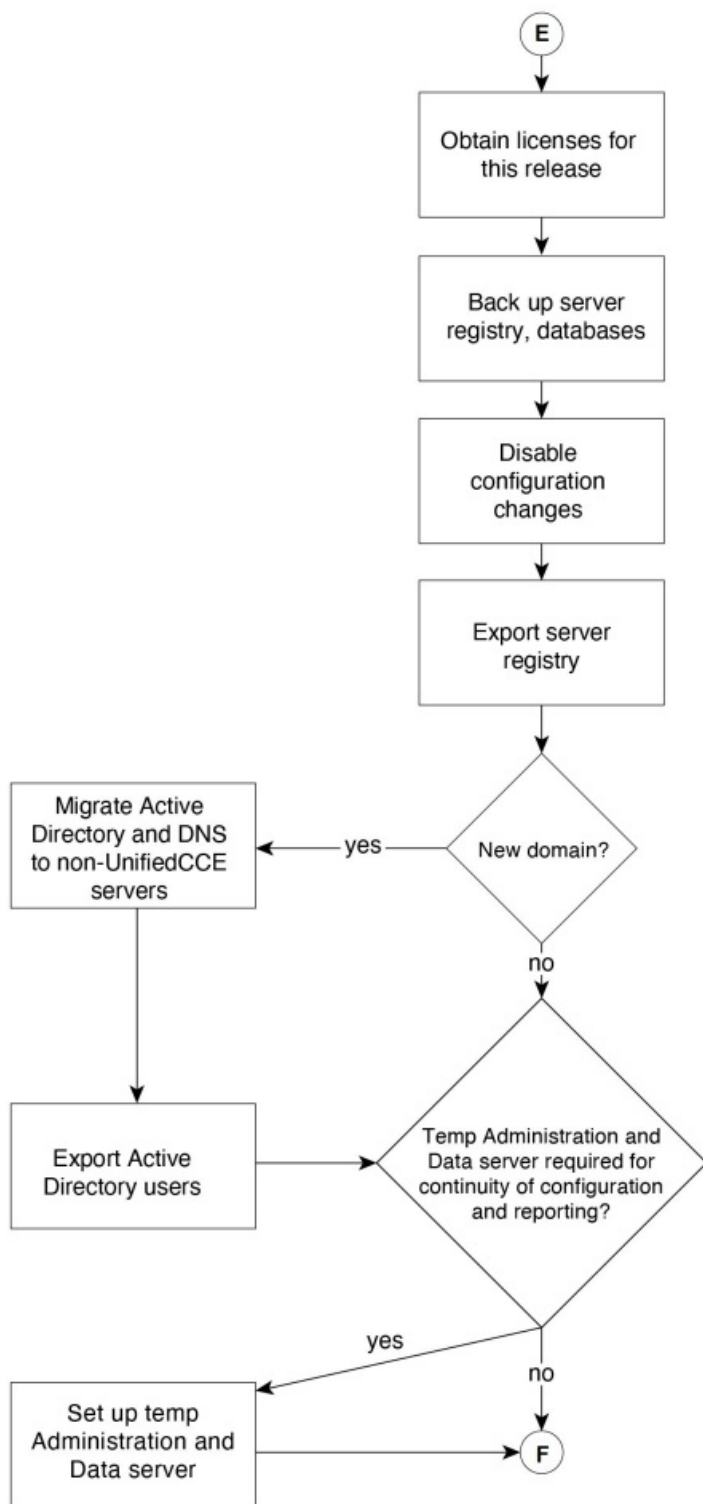
The following diagrams illustrate the stages of the component-level upgrade flows for the Packaged CCE 2000 Agent Deployment solution upgrade. Each diagram covers one of the stages. The letter at the end of each flow indicates the start of the next flow that you are required to perform.

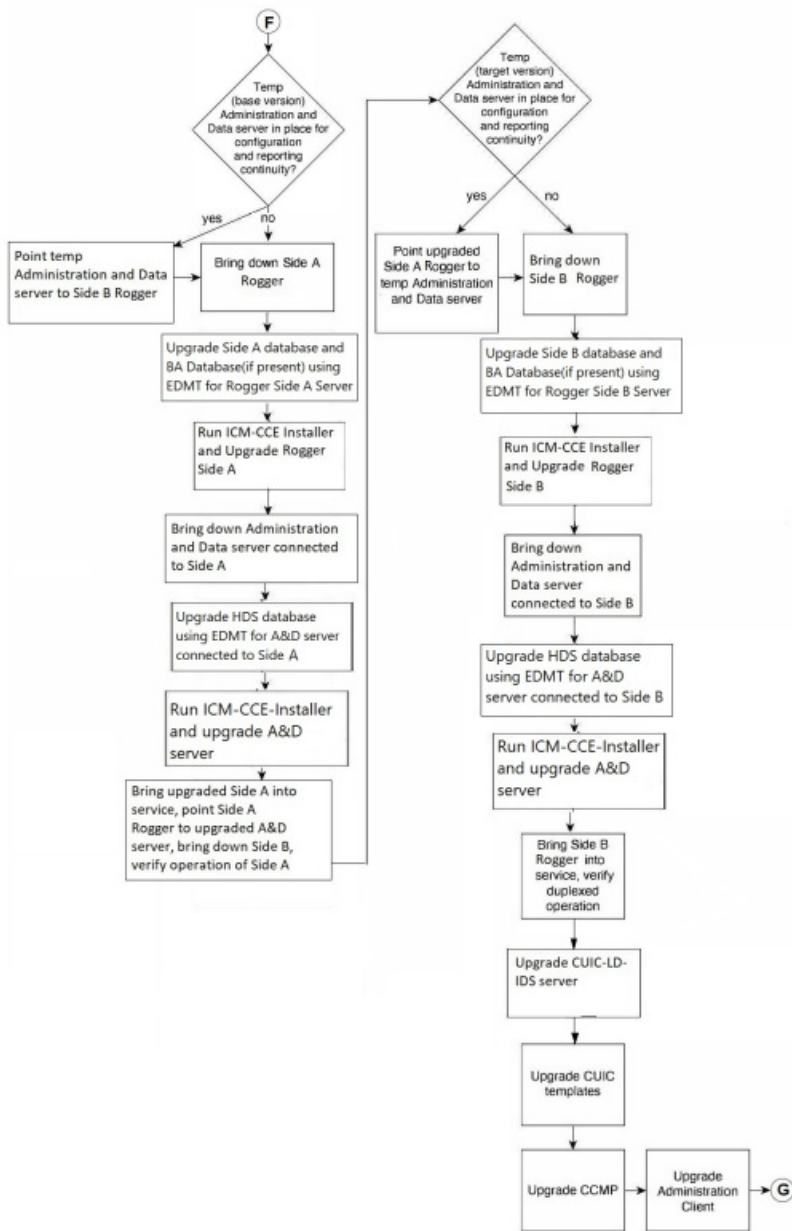


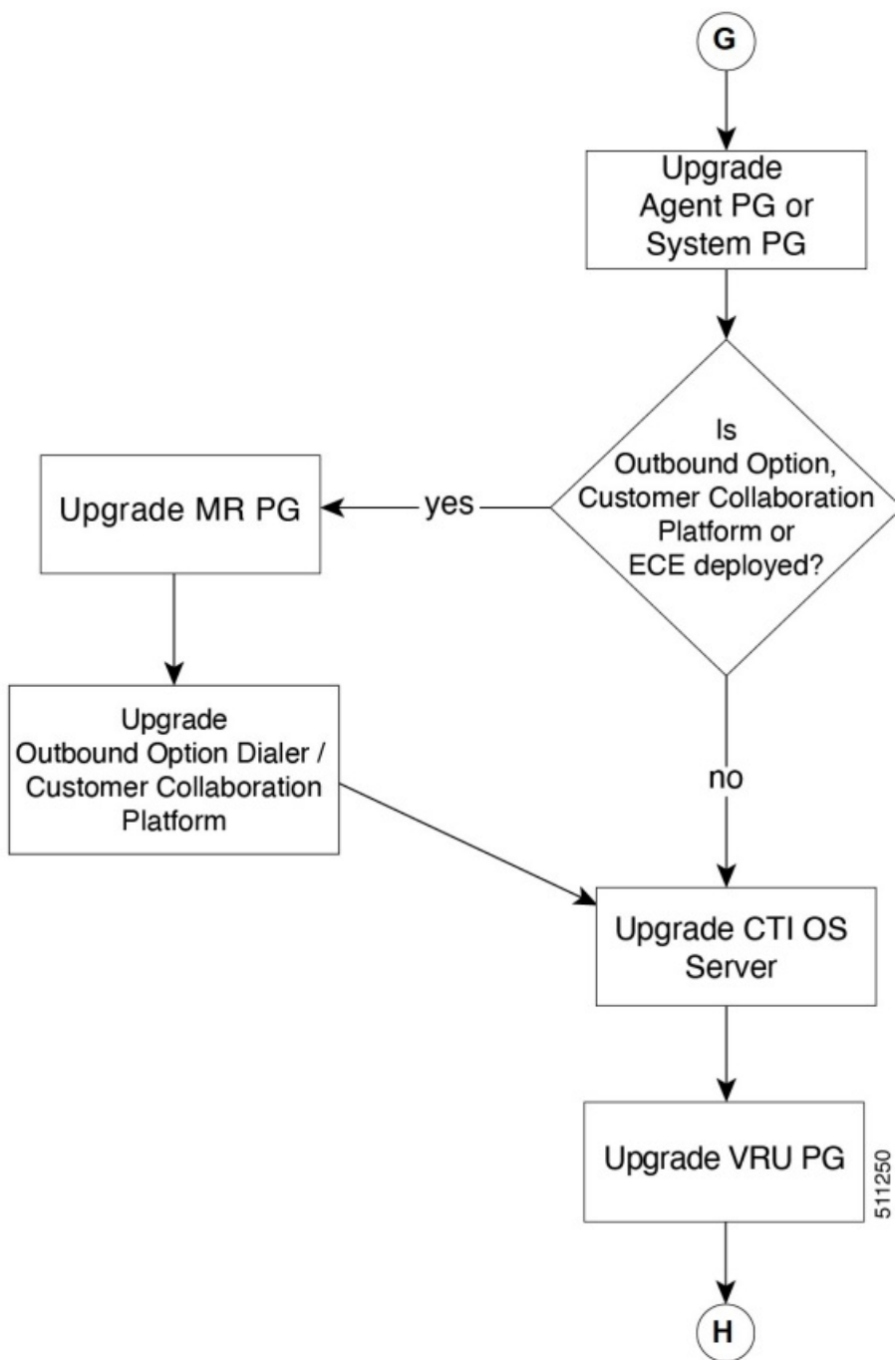


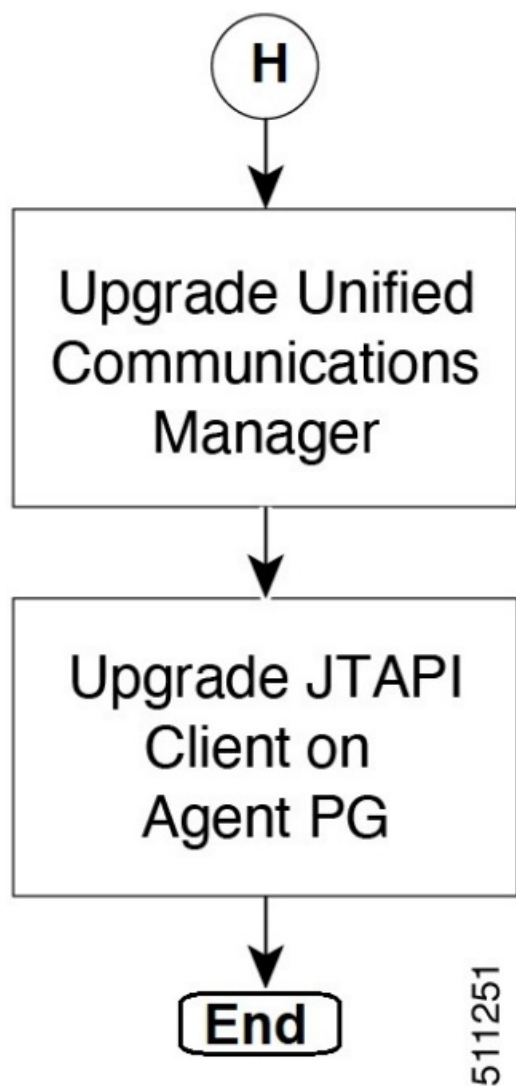






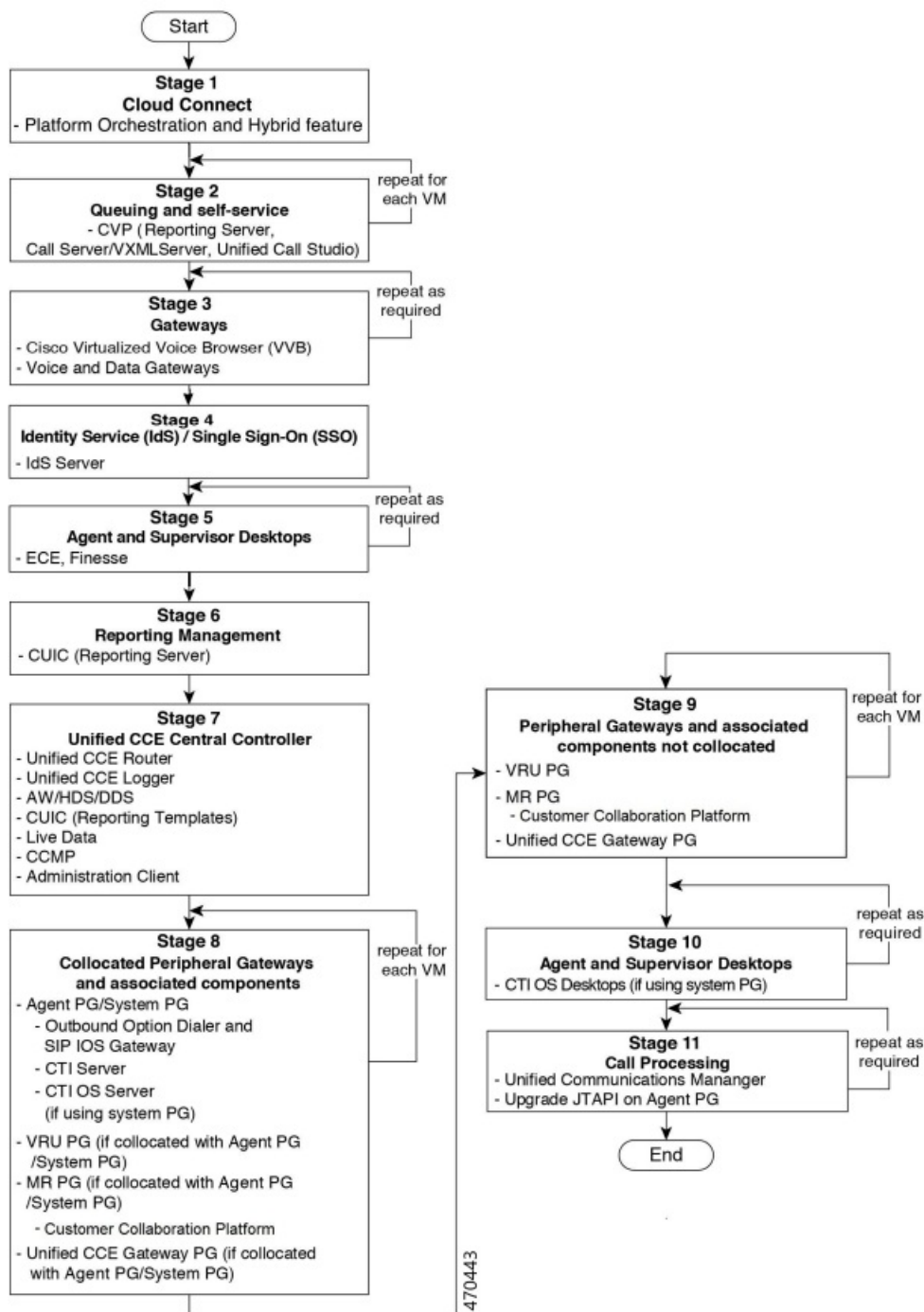




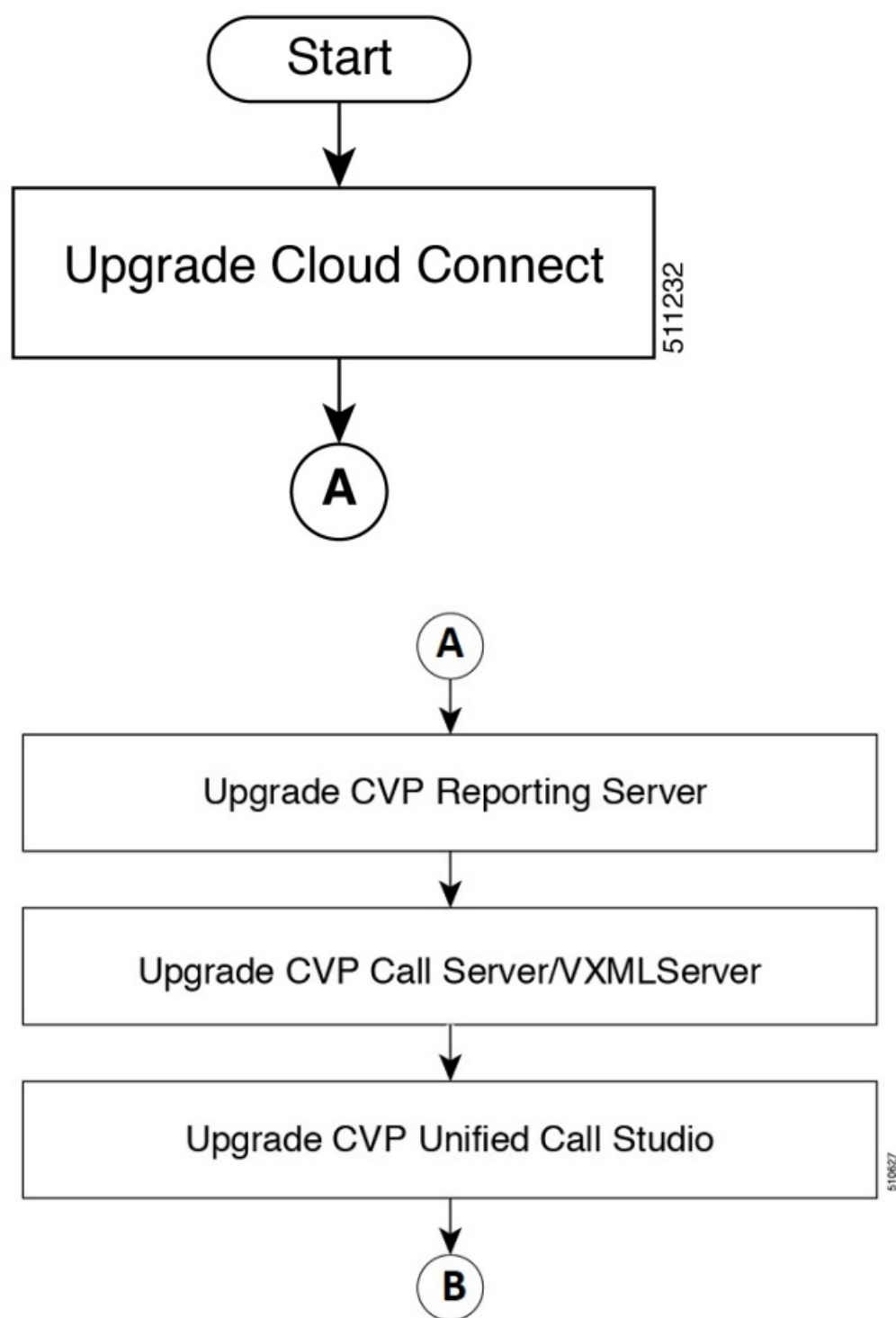


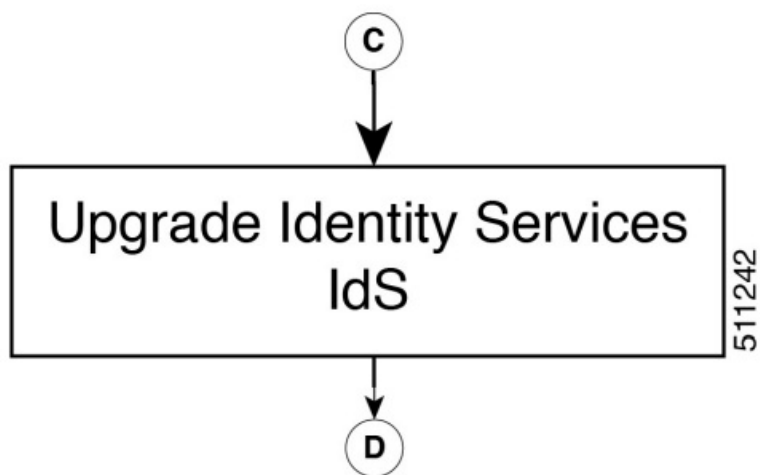
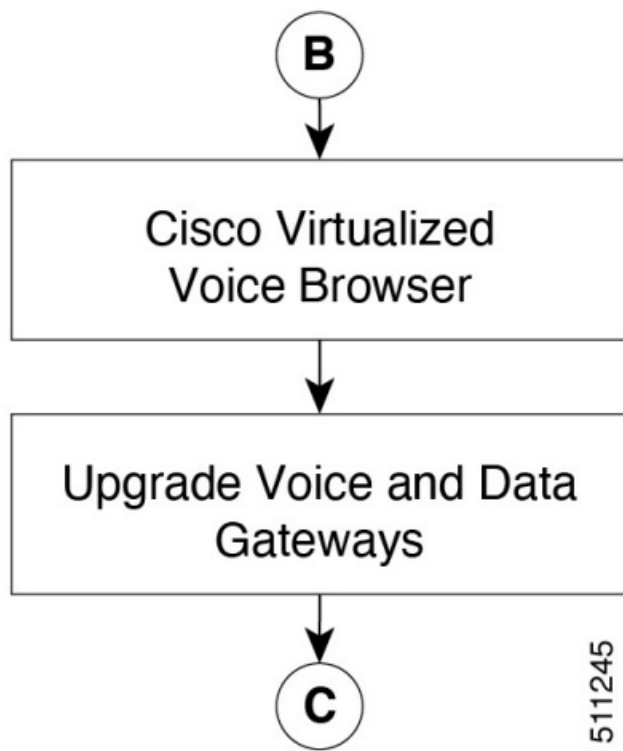
Upgrade Flowcharts for 4000 Agents and above Deployments

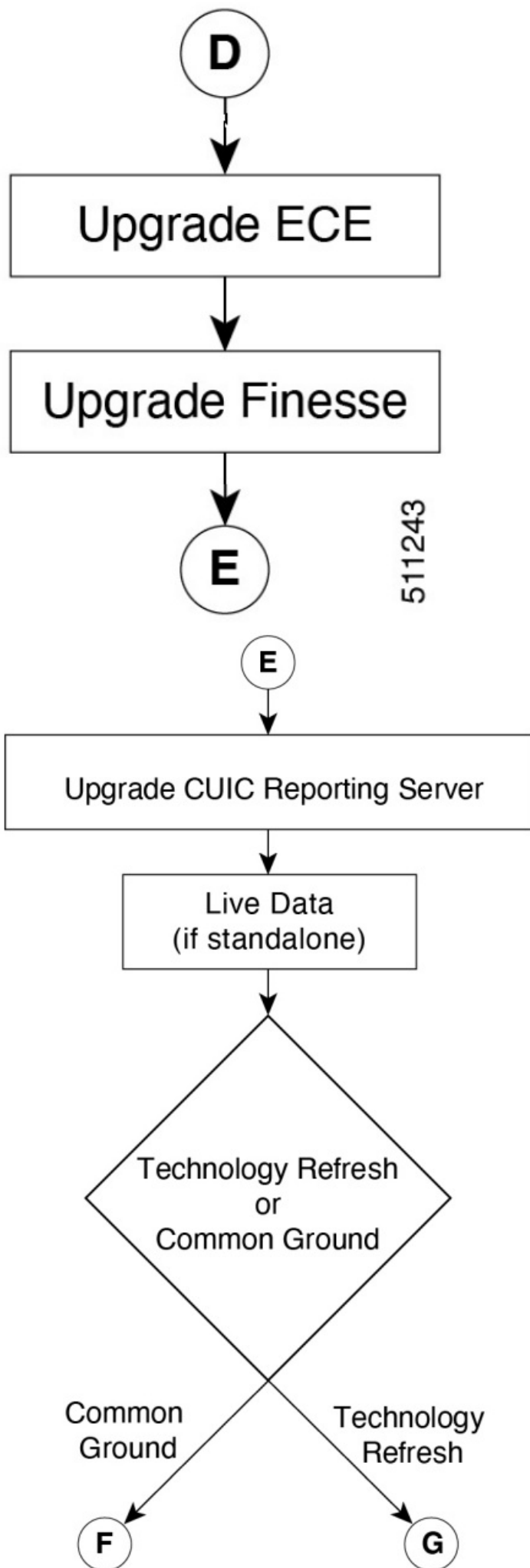
The following diagram illustrates the solution-level upgrade flow for the Packaged CCE 4000 Agents and above Deployment solution upgrade.

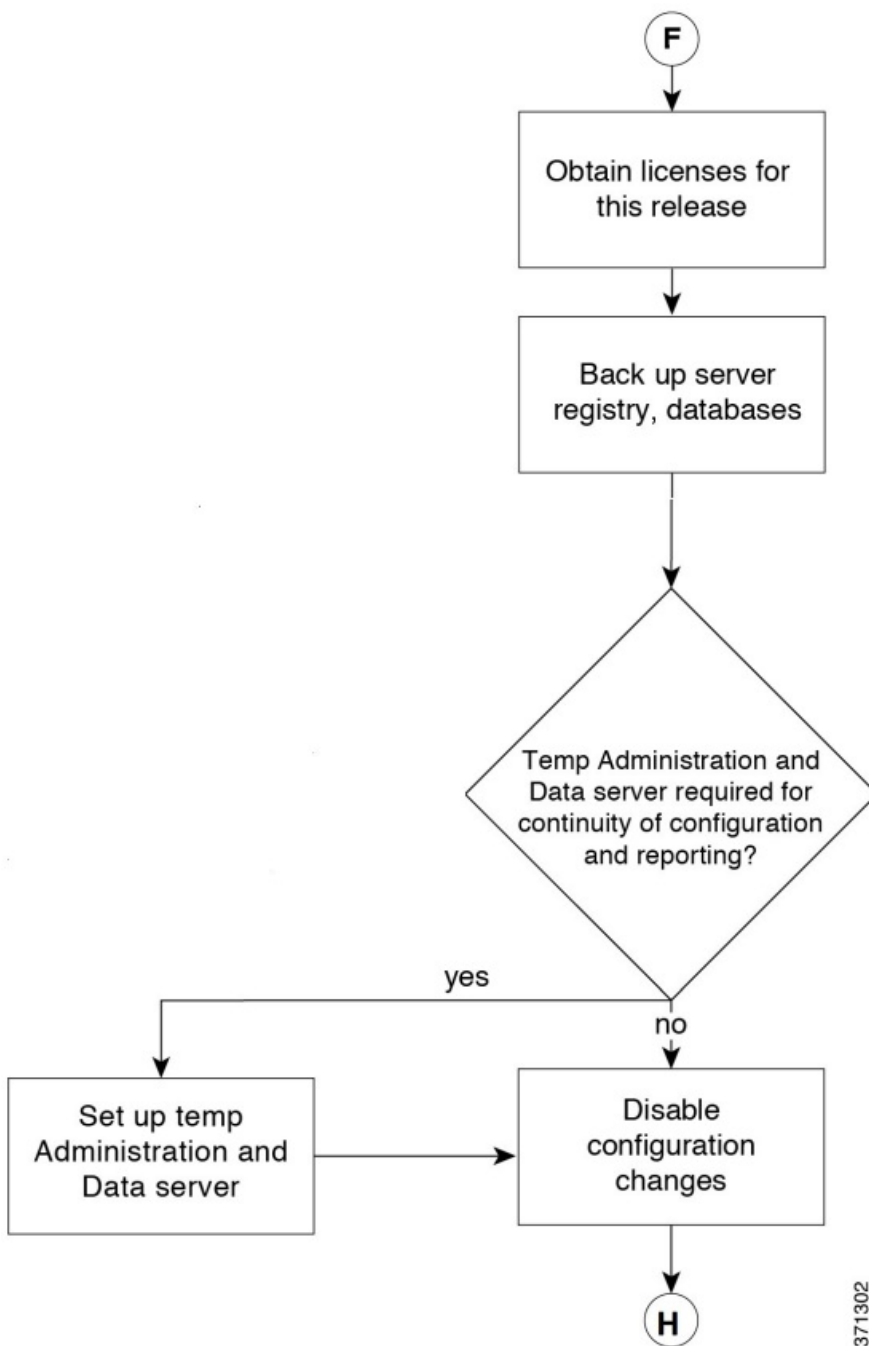


The following diagrams illustrate the stages of the component-level upgrade flows for the Packaged CCE 4000 Agents and above Deployment solution upgrade. Each diagram covers one of the stages. The letter at the end of each flow indicates the start of the next flow that you are required to perform.

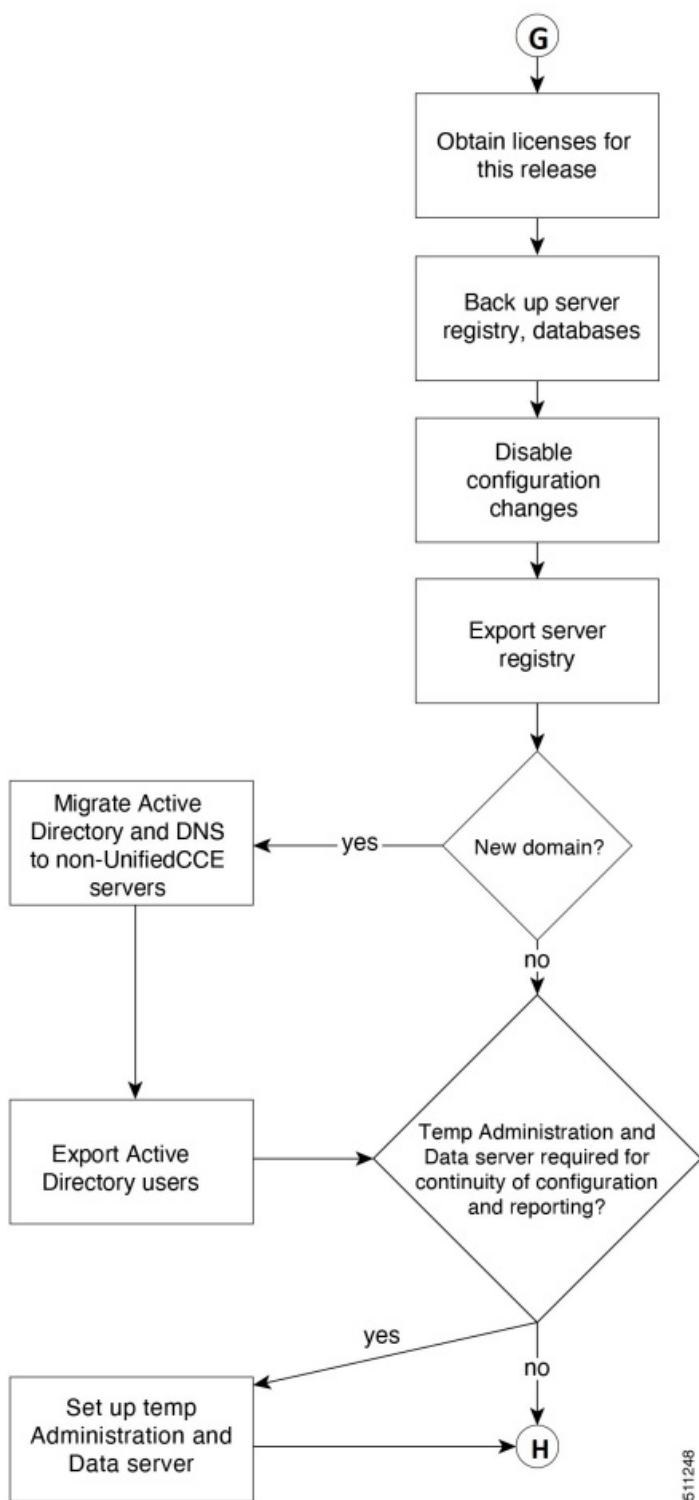


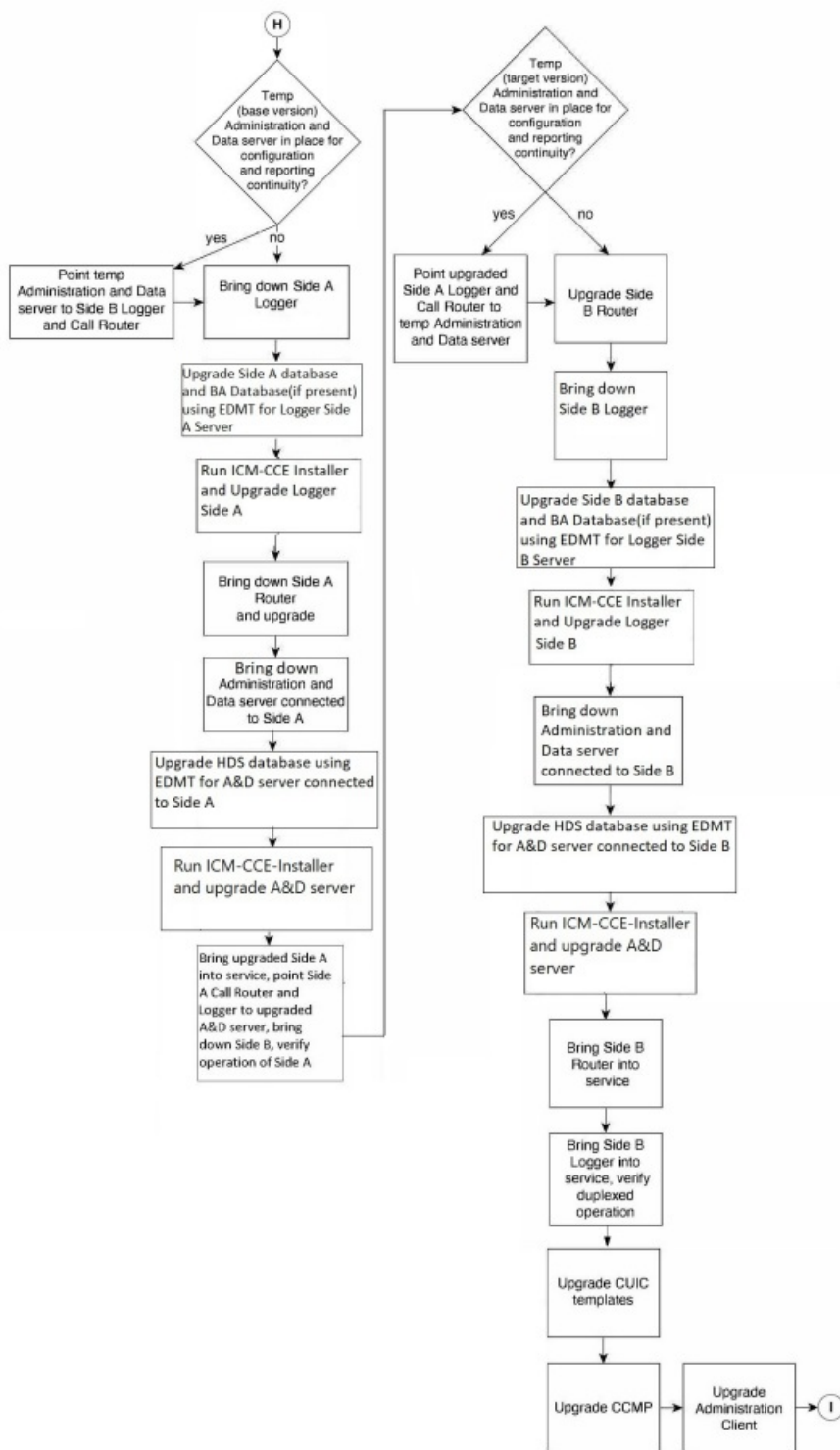


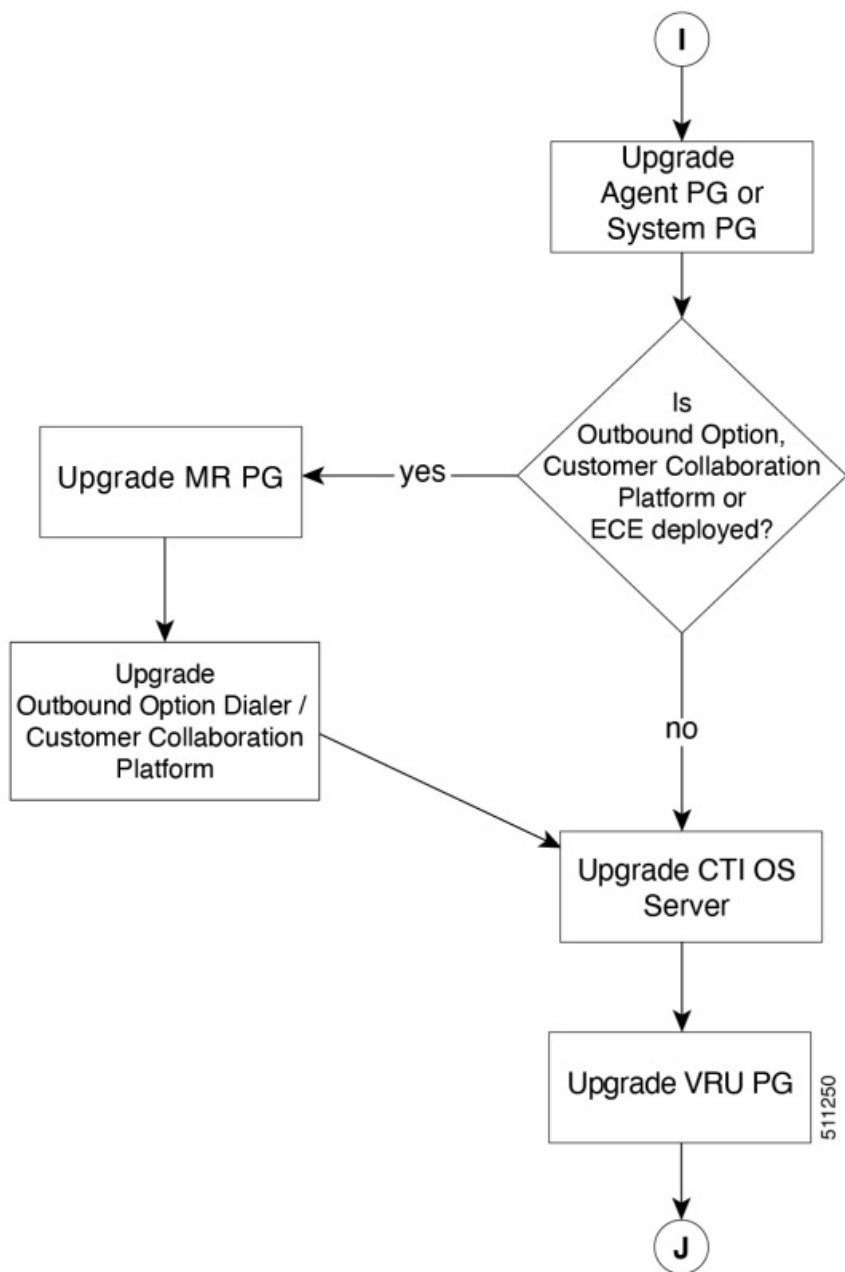




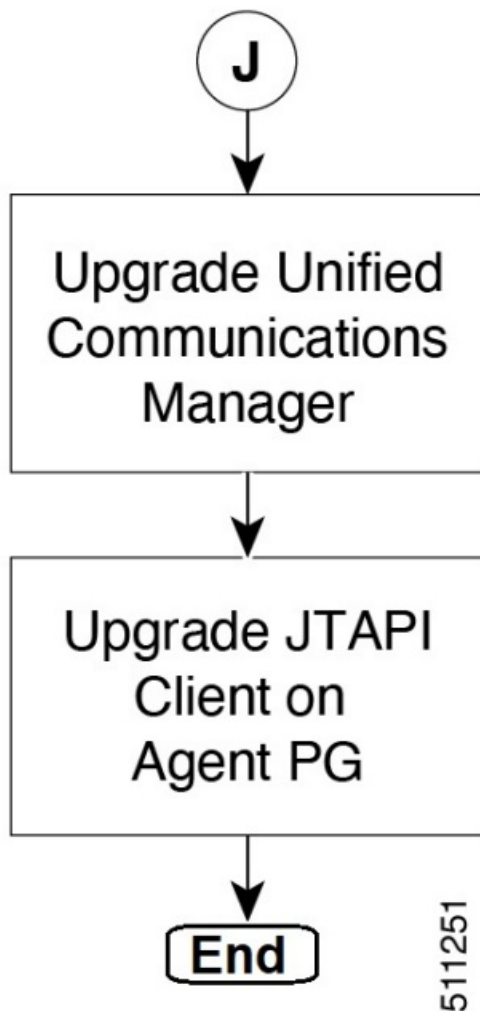
371302







511250



Silent Upgrade

There are situations when silent upgrade can be used in running an installation wizard. You can run a silent installation while performing a fresh install or an upgrade.

For more information, see Silent Installation.

Custom Trust store to Store Component Certificates

Starting Unified CCE 12.6(x), a new custom trust store is created under the Unified ICM Installation directory `\ssl\cacerts` to store all the component certificates. With this new custom trusts tore, you don't need to export and import the certificates each time Java is updated in the system. After upgrading from Unified CCE 12.5(x) to Unified CCE 12.6(x), you should export the certificates from the Java trust store to the custom trust store under the Unified ICM Installation directory `\ssl\cacerts`. Export the certificate from the Java trust store:

- Run the command at the command prompt: `cd %JAVA_HOME%\bin`.



Important


Use `CCE_JAVA_HOME` if upgrading from Unified CCE 12.5(1a) or Unified CCE 12.5(1) with ES55 (mandatory OpenJDK ES).

- Export the certificates of all the components imported into the trust store. The command to export the certificates is `key tool -export -key store \lib\security\cacerts -alias -file .cer`
- Enter the trust store password when prompted.

Import the certificate to the custom trust store:

- Run the command at the command prompt: `cd %CCE_JAVA_HOME%\bin.`
- Import the certificates for all the components that you exported from the Java trust store. The command to import certificates is `key tool -import -key store \ssl\cacerts -file .cer -alias .`
- Enter the trust store password when prompted.
- Enter 'yes' when prompted to trust the certificate.

Documents / Resources

	<p>CISCO CCE-2000 Packaged Agent Deployment [pdf] User Manual CCE-2000 Packaged Agent Deployment, Packaged Agent Deployment, Agent Deployment, Deployment</p>
---	---

References

- [User Manual](#)

[Manuals+](#), [Privacy Policy](#)

This website is an independent publication and is neither affiliated with nor endorsed by any of the trademark owners. The "Bluetooth®" word mark and logos are registered trademarks owned by Bluetooth SIG, Inc. The "Wi-Fi®" word mark and logos are registered trademarks owned by the Wi-Fi Alliance. Any use of these marks on this website does not imply any affiliation with or endorsement.