



circle CIM315A Contactless Smart Card Reader Module User Manual

[Home](#) » [circle](#) » circle CIM315A Contactless Smart Card Reader Module User Manual 

Contents

- 1 [circle CIM315A Contactless Smart Card Reader Module](#)
- 2 [Driver installation Procedure](#)
- 3 [Operation Example](#)
- 4 [FCC Rules](#)
- 5 [Documents / Resources](#)
 - 5.1 [References](#)
- 6 [Related Posts](#)



circle CIM315A Contactless Smart Card Reader Module



Driver installation Procedure

Driver signed by Microsoft and WHQL, user can install the driver with Window Update. In case that cannot install via Window Update, please process the below steps to Manual installation

Hardware requires:

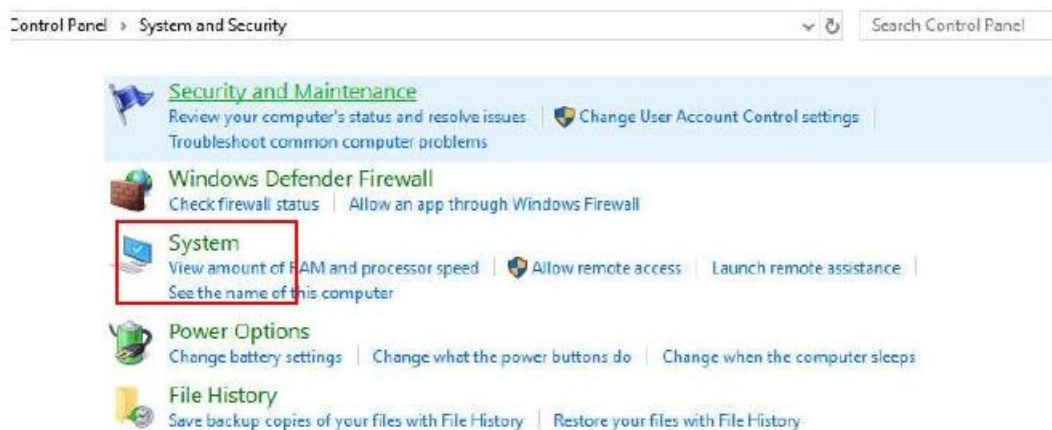
- CIM315A
- PC with OS windows 7 or above

Software requires:

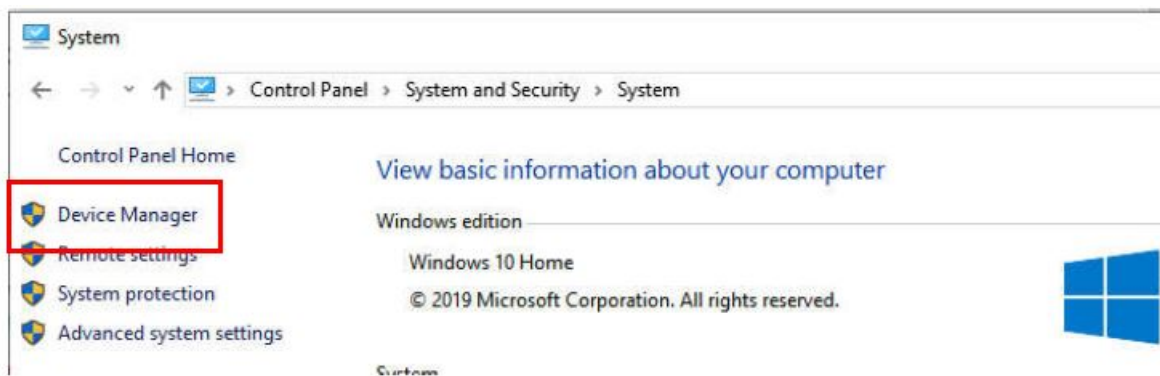
- CIR315 Driver Package

Steps:

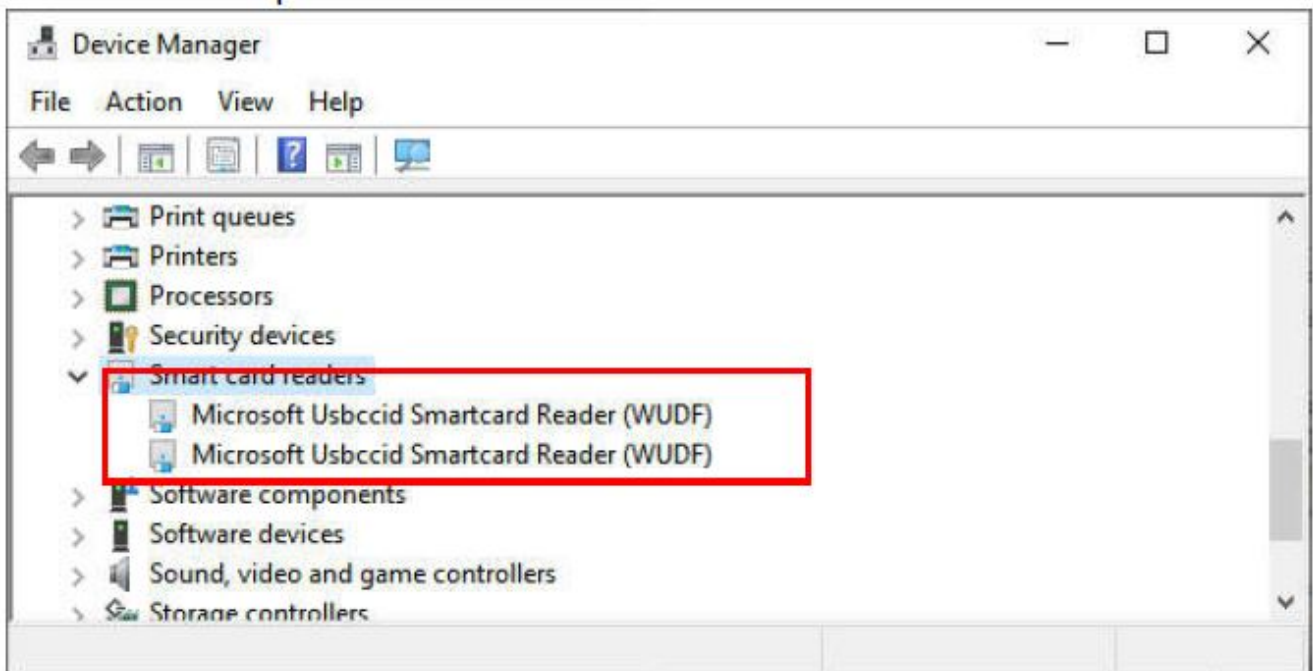
1. Connect CIM315A to PC
2. On PC, open “Control Panel > System”



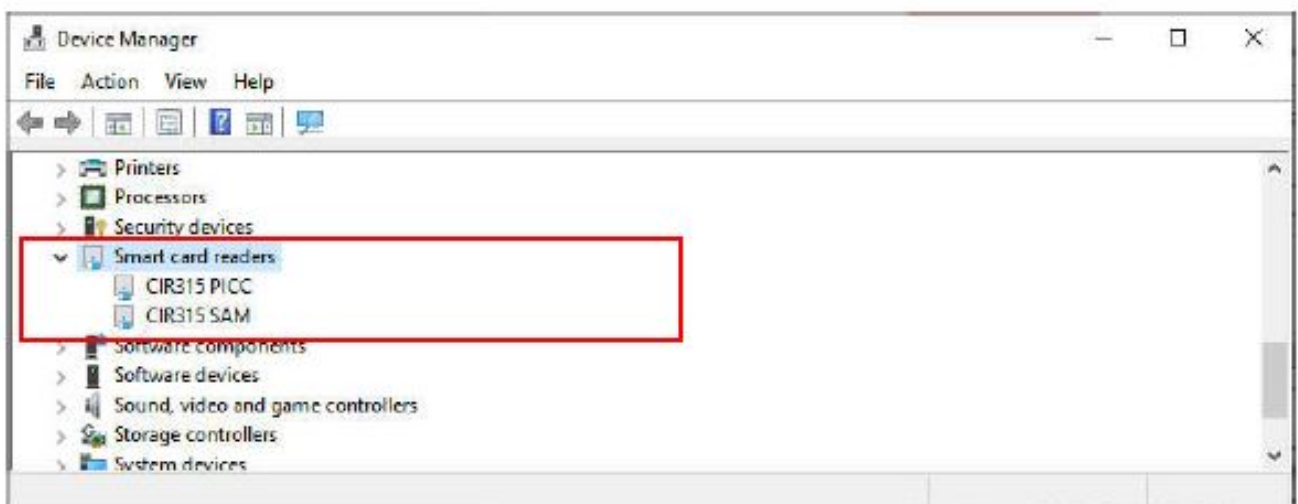
3. Open “Device Manager”



4. Select and open “Smart card readers”

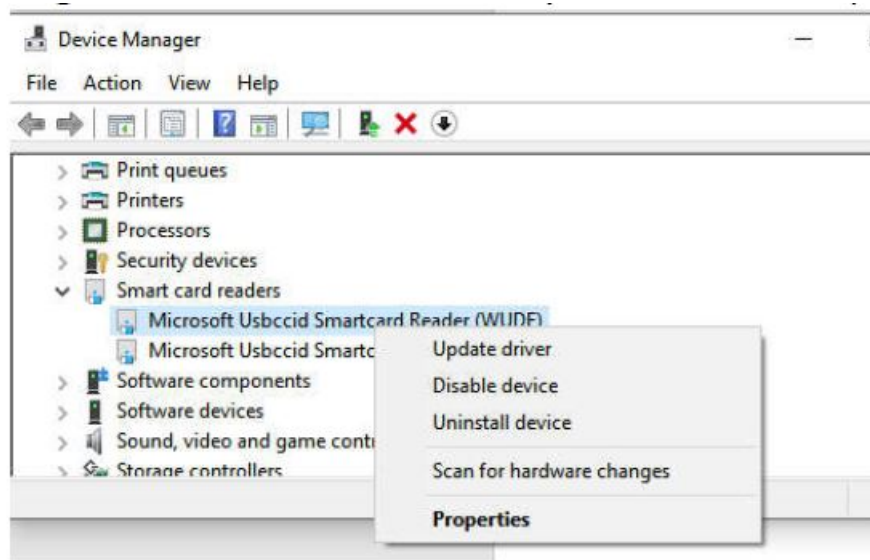


if it is shown “Microsoft Usbccid ... (WUDF)”, please continue with step 5)



if it is shown “CIR315 PICC” and “CIR315 SAM”, mean driver install completed

5. Right click then select “Update driver” (one by one)



6. Select “Browse my computer for driver software...”

← Update Drivers - Microsoft Usbccid Smartcard Reader (WUDF)

How do you want to search for drivers?

→ Search automatically for updated driver software
Windows will search your computer and the Internet for the latest driver software for your device, unless you've disabled this feature in your device installation settings.

→ Browse my computer for driver software
Locate and install driver software manually.

7. Let me pick from a list ...”

← Update Drivers - Microsoft Usbccid Smartcard Reader (WUDF)

Browse for drivers on your computer

Search for drivers in this location:

D:\Project\CIR315\Production Package\CIR315A-01ENG\TL_DRIVER

Browse...

☒ Include subfolders

→ Let me pick from a list of available drivers on my computer
This list will show available drivers compatible with the device, and all drivers in the same category as the device.

Next

Cancel

8. Select “Have Disk...”

Select the device driver you want to install for this hardware.



Select the manufacturer and model of your hardware device and then click Next. If you have a disk that contains the driver you want to install, click Have Disk.

☒ Show compatible hardware

Model

- CIR115 ICC Version: 2.0.0.0 [24/9/2019]
- CIR115 ICC Version: 2.0.0.0 [26/9/2019]
- Microsoft Usbccid Smartcard Reader (UMDF2)
- Microsoft Usbccid Smartcard Reader (WUDF)



This driver is digitally signed.

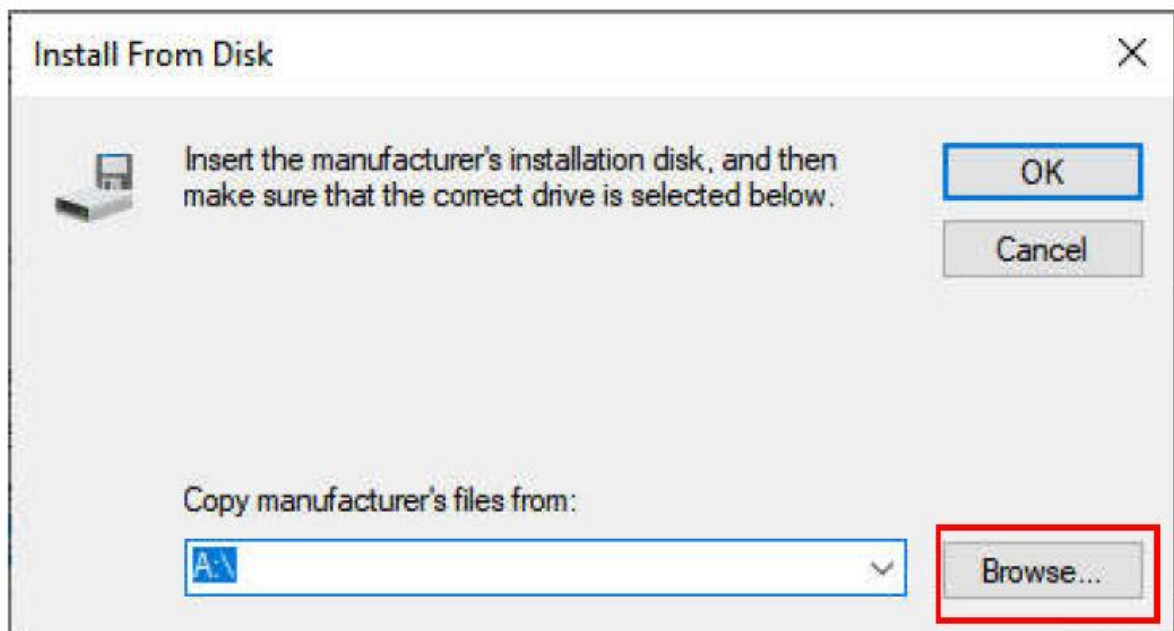
[Tell me why driver signing is important](#)

Have Disk...

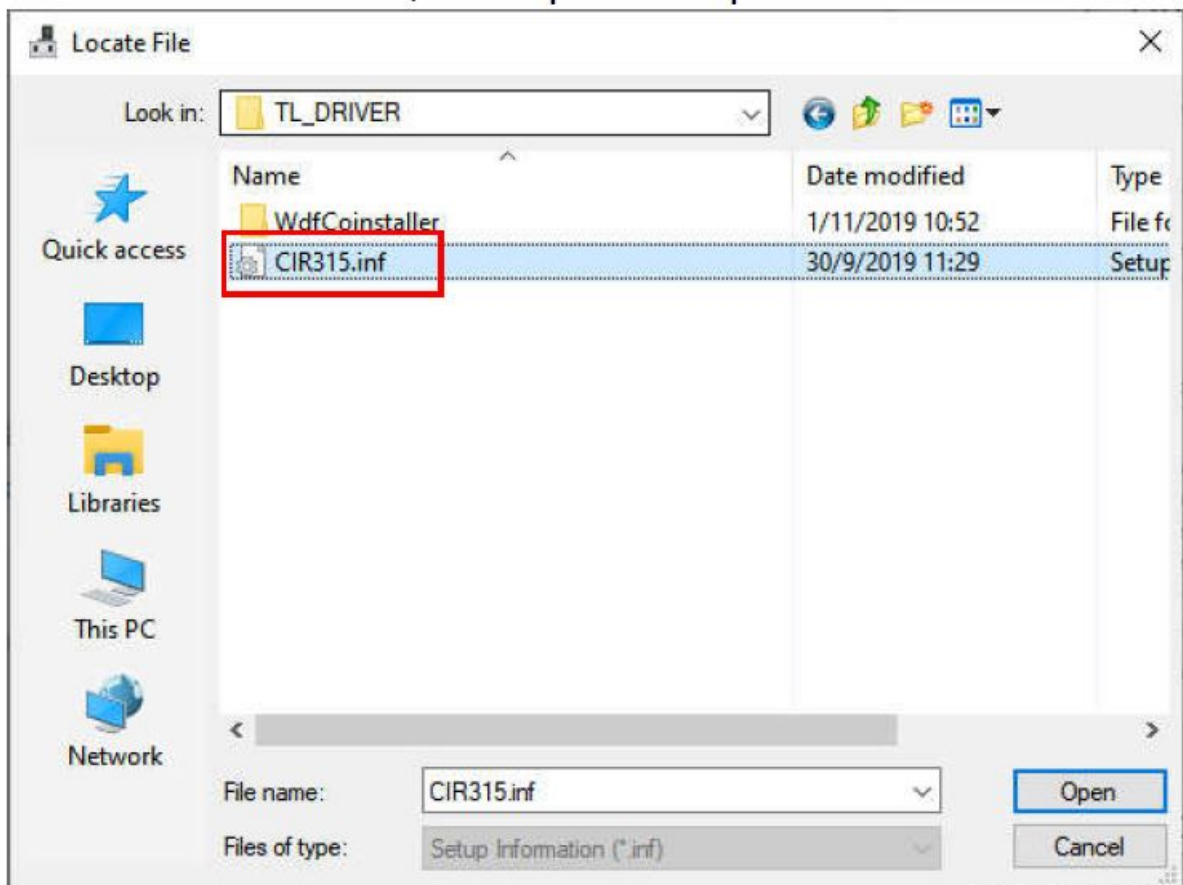
Next

Cancel

9. Select "Browse..."



Select "CIR315.inf", then press "Open" and "OK"



10. Select "CIR315 PICC" or "CIR315 SAM" then "Next"

← Update Drivers - Microsoft Usbccid Smartcard Reader (WUDF)


Select the device driver you want to install for this hardware.



Select the manufacturer and model of your hardware device and then click Next. If you have a disk that contains the driver you want to install, click Have Disk.

☒ Show compatible hardware

Model

 CIR315 PICC



This driver is digitally signed.

[Tell me why driver signing is important](#)

Have Disk...

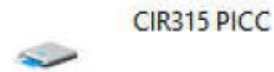
Next

Cancel

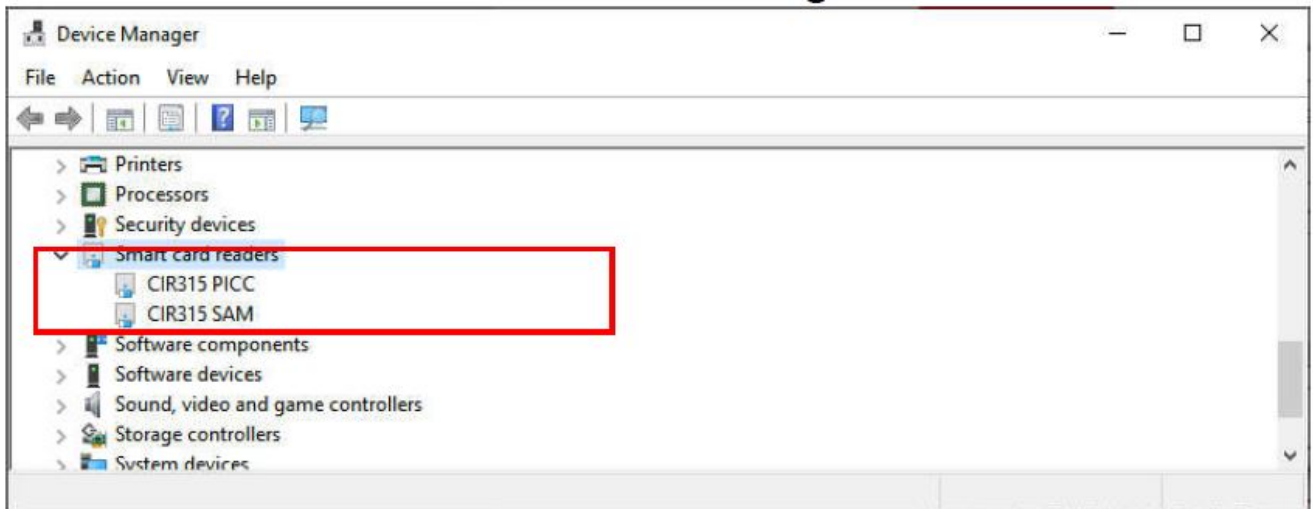
11. Waiting until below screen shown, Press "Close" to complete

Windows has successfully updated your drivers

Windows has finished installing the drivers for this device:



12. Double click to ensure the device changed to "CIR315 PICC" and "CIR315 SAM"



13. Done

Operation Example

Hardware requires:

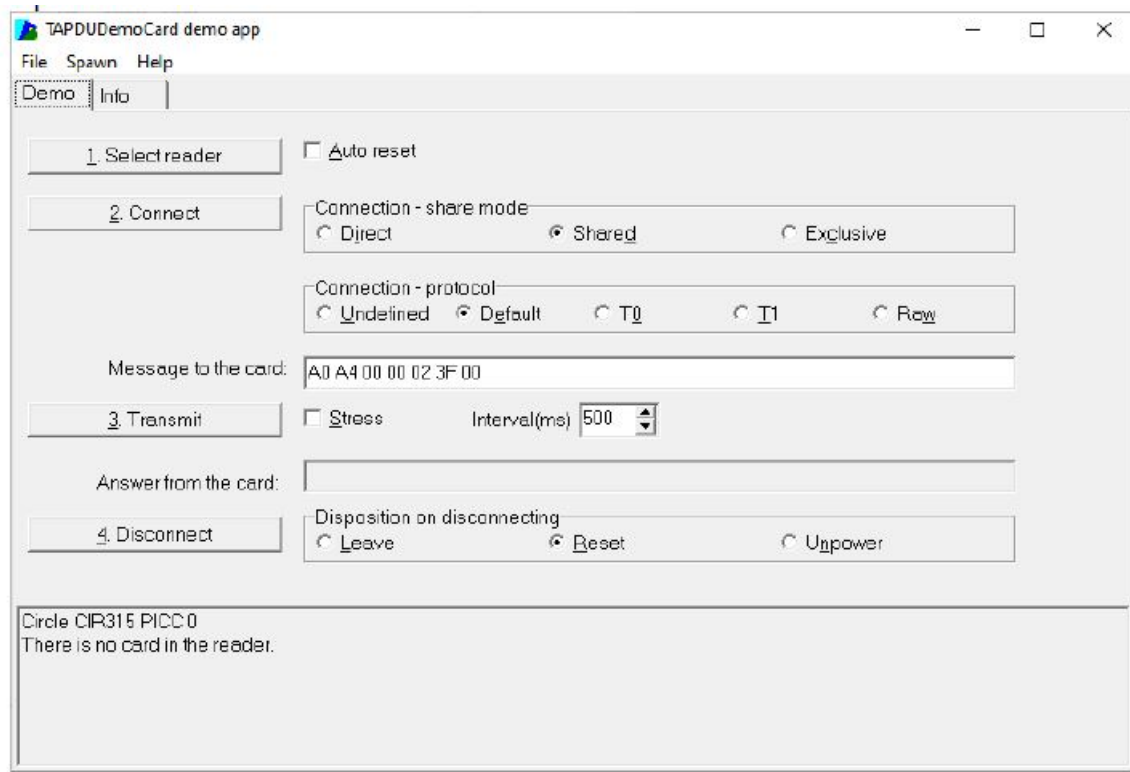
- CIM315A
- PC with OS windows 7 or above
- ISO14443 Test Card

Software requires

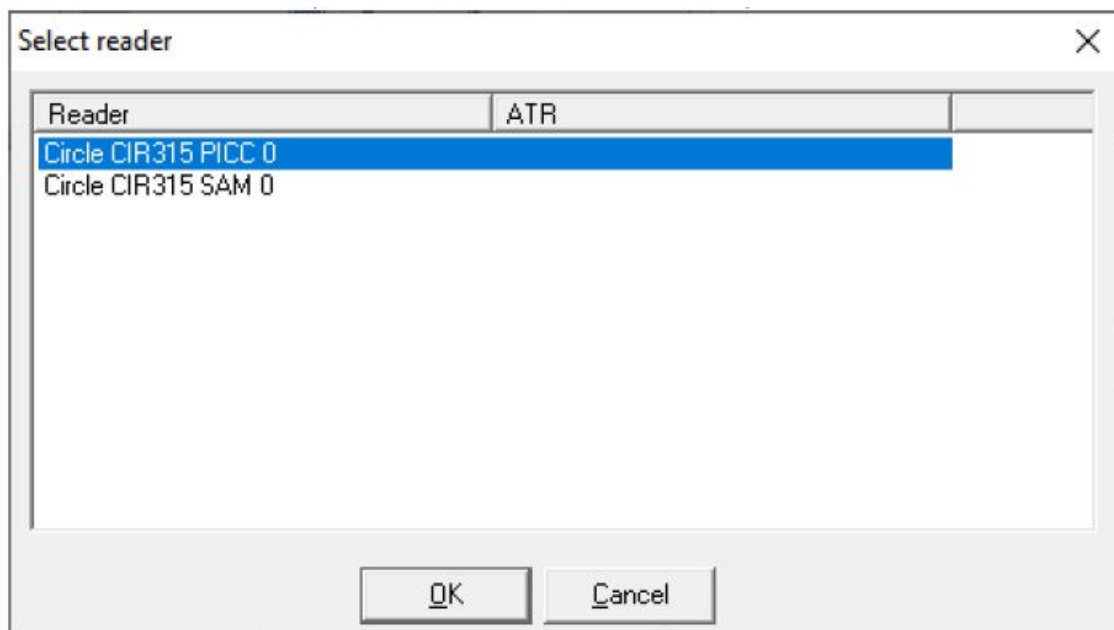
- Any PCSC Application (e.g. APDU.exe)

Steps:

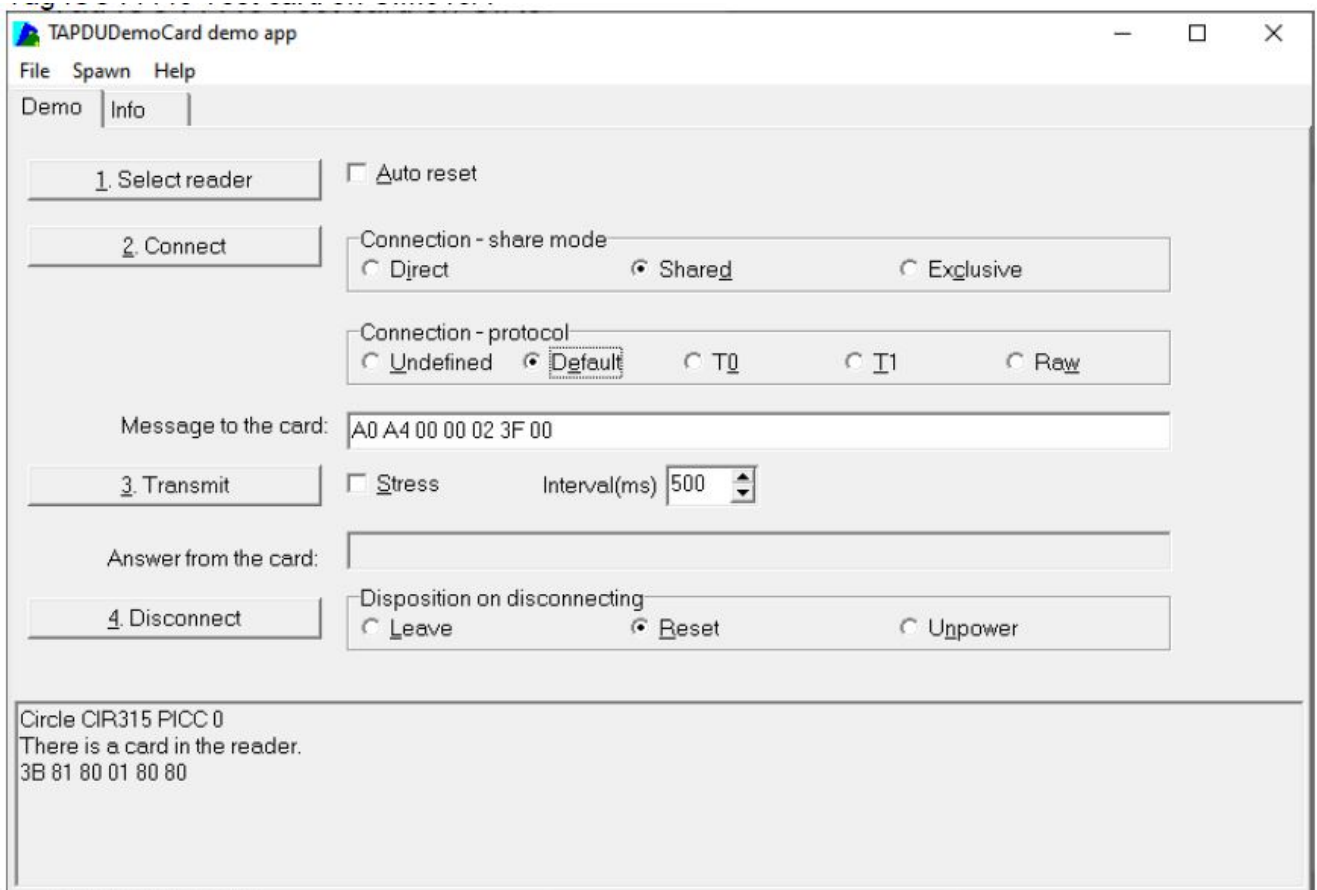
1. Plug in the reader into the PC
2. Open "APDU.exe"



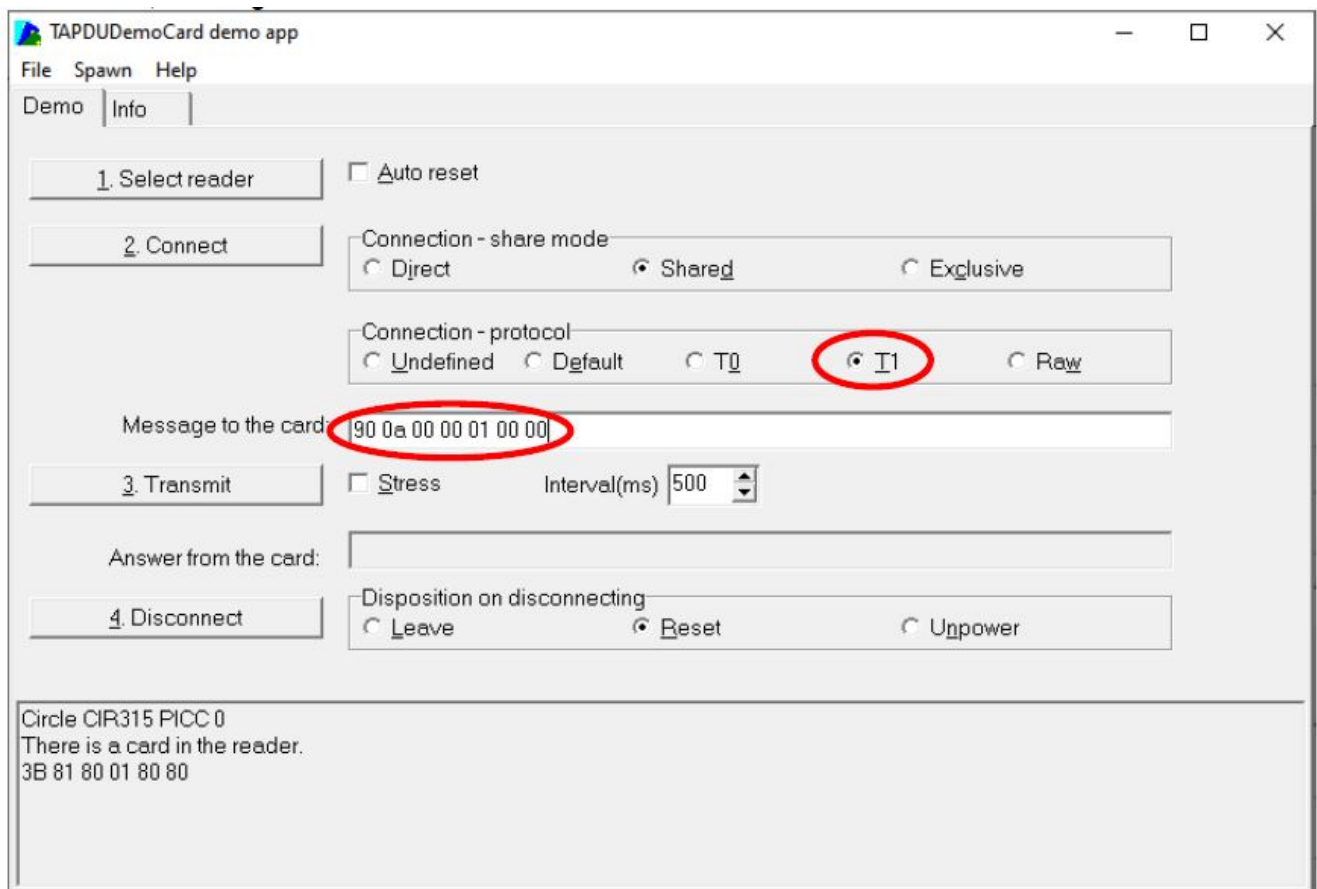
3. Click "1. Select reader", Chose "Circle CIR315 PICC 0", then click "OK"



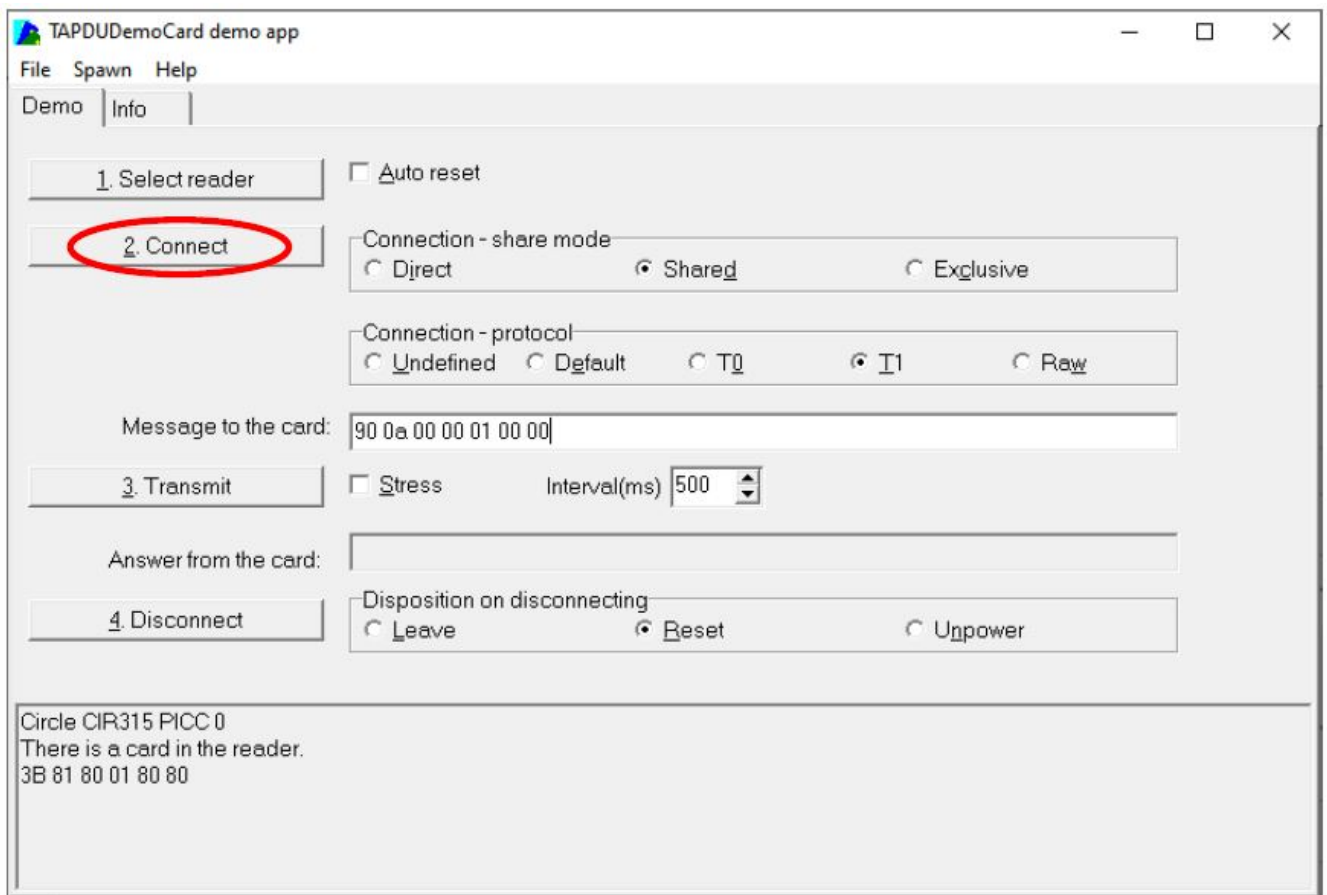
4. Tag ISO14443 Test card on CIM315A



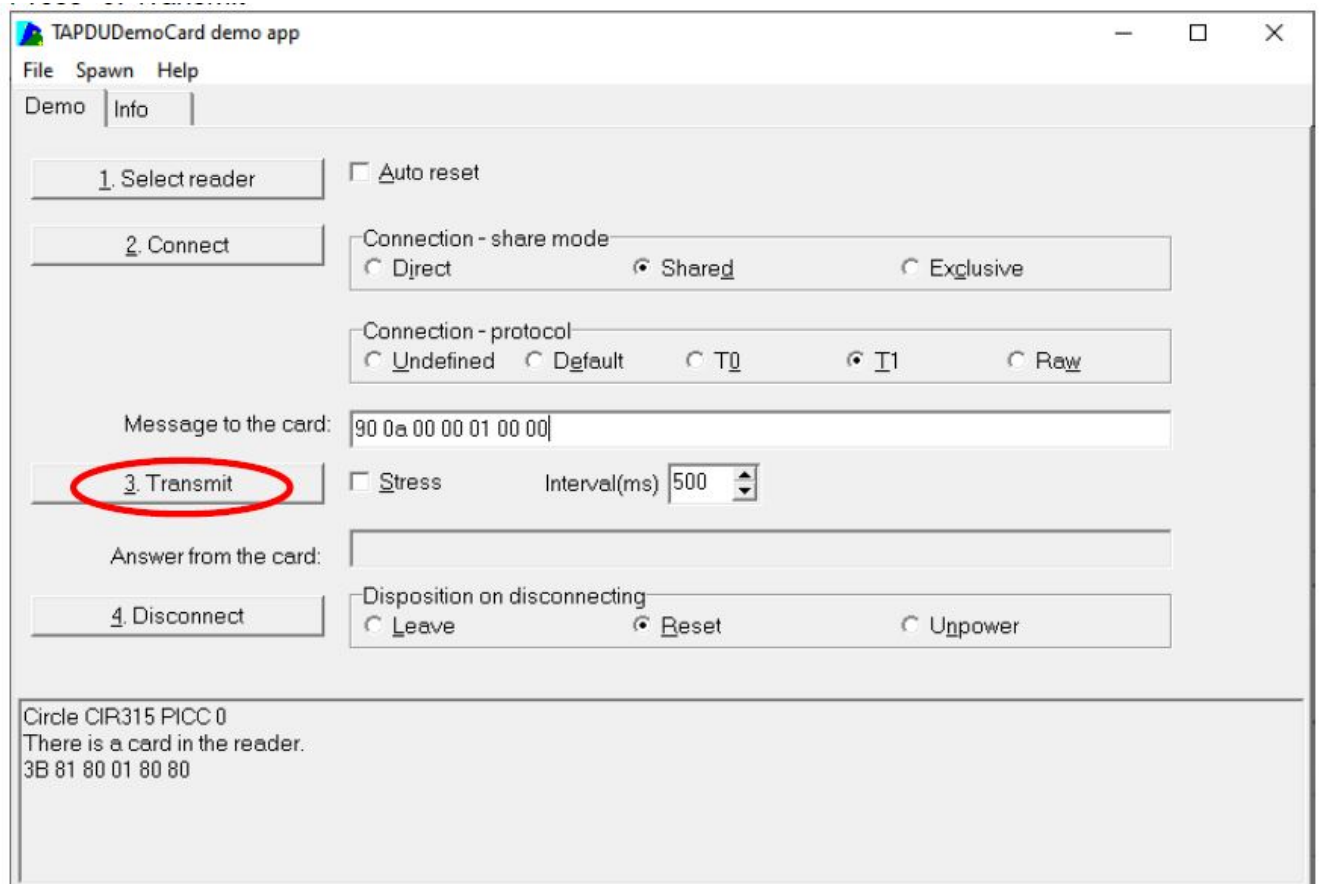
5. Select "T1", Message = "90 0a 00 00 01 00 00"



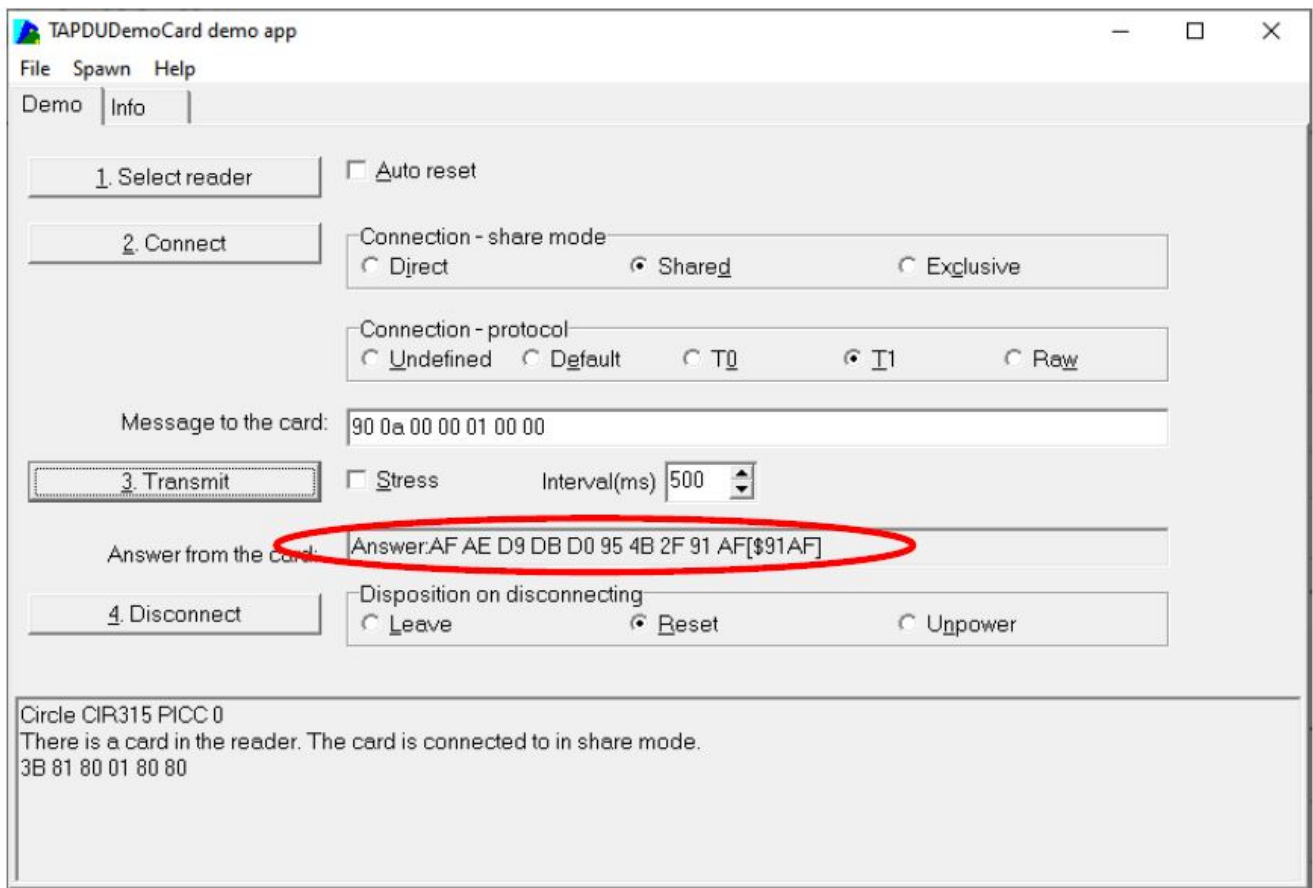
6. Press "2. Connect"



7. Press "3. Transmit"



8. Result will be shown on the "Answer from the card:"



FCC Rules

NOTE

This equipment has been tested and found to comply with the limits for a Class B digital device, pursuant to Part 15 of the FCC Rules. These limits are designed to provide reasonable protection against harmful interference in a residential installation. This equipment generates, uses and can radiate radio frequency energy and, if not installed and used in accordance with the instructions, may cause harmful interference to radio communications. However, there is no guarantee that interference will not occur in a particular installation. If this equipment does cause harmful interference to radio or television reception, which can be determined by turning the equipment off and on, the user is encouraged to try to correct the interference by one or more of the following measures:

- Reorient or relocate the receiving antenna.
- Increase the separation between the equipment and receiver.
- Connect the equipment into an outlet on a circuit different from that to which the receiver is connected.
- Consult the dealer or an experienced radio/TV technician for help

Caution

Any changes or modifications not expressly approved by the grantee of this device could void the user's authority to operate the equipment. Specific operational use conditions The end product which used the equipment have to full test and apply an original FCC ID. Any changes or modifications not expressly approved by the grantee of this device could void the user's authority to operate the equipment.

Limited modular

This equipment is applied as Limited single-modular transmitter, the end product which used this equipment have to full test and apply an original FCC ID.

RF Exposure warning

This equipment complies with FCC radiation exposure limits set forth for an uncontrolled environment. The End

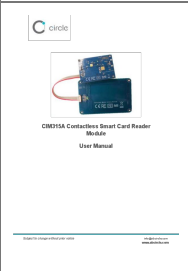
user must follow the specific operating instructions for satisfying RF exposure compliance. This transmitter must not be co-located or operating in conjunction with any other antenna or transmitter. The end product which used this equipment have to full test and apply an original FCC ID.

Antennas

Any changes or modifications not expressly approved by the grantee of this device could void the user’s authority to operate the equipment. The end product which used this equipment have to full test and apply an original FCC ID.

Label and compliance information The end product which used this equipment have to full test and apply an original FCC ID. The label should be included and comply to the FCC rules with end product’s FCC ID.

Documents / Resources

	<p>circle CIM315A Contactless Smart Card Reader Module [pdf] User Manual CIM315A, 2AUVM-CIM315A, 2AUVMCIM315A, CIM315A Contactless Smart Card Reader Module, CIM315A, Contactless Smart Card Reader Module</p>
---	--

References

-  [AB Circle Limited - Finest IoT and smart card readers](#)