



# CINCOM CM-067A Leg Compression Massager Operating Instructions

[Home](#) » [CINCOM](#) » CINCOM CM-067A Leg Compression Massager Operating Instructions 

## Contents

- [1 CINCOM CM-067A Leg Compression Massager](#)
- [2 SAFETY PRECAUTIONS](#)
- [3 TROUBLESHOOTING FAQ'S](#)
- [4 NAMES OF COMPONENTS](#)
- [5 OPERATING INSTRUCTIONS](#)
- [6 MAINTENANCE](#)
- [7 STORAGE](#)
- [8 TROUBLESHOOTING](#)
- [9 SPECIFICATIONS](#)
- [10 PACKAGE INCLUDES](#)
- [11 FREQUENTLY ASKED QUESTIONS](#)
- [12 VIDEO – PRODUCT OVERVIEW](#)
- [13 References](#)



**CINCOM CM-067A Leg Compression Massager**



**SHENZHEN CINCOM E-COMMERCE CO., LTD.**

- **Address:** B806,building 11 ,gongyuandadixiaoqu,Longxiangdadao  
longchengjiedao,longgangqu,shenzhen,guangdong, China
- **E-mail:** [service@cincomhealth.com](mailto:service@cincomhealth.com)
- **Website:** [www.cincomhealth.com](http://www.cincomhealth.com)

Thanks for purchasing our product. Please read instructions carefully before use and keep it well for further reference.

**SAFETY PRECAUTIONS**

**Warnings**

- Those with any of the following conditions or persons who are receiving medical treatment should consult the doctor before using the product:
  1. Using pacemaker or other medical devices which are susceptible to electrical interference;
  2. Suffering from malignant tumors;
  3. Suffering from cardiac diseases;
  4. Having serious peripheral neuropathy dysfunction or sensory disturbance caused by diabetes;
  5. Being unsuitable to do the massage because of traumas on the body;
- Keep it out of the reach of infants, children, and people without the ability to use it independently.

- Don't use another power adapter but the original one.
- Don't scratch, damage, process, excessively band, pull or twist the power cord of power adapter. Otherwise, it may cause fire or electric shock.
- It is not allowed to use when the power adapter dysfunctions or the plug is loose.
- Don't plug or unplug the power adapter with wet hands.
- Don't put the controller in the quilt or use the machine in high temperature condition.
- It is forbidden to remodel, disassemble or repair the product without permission.



### Cautions

1. Stop using it immediately if you feel unwell. Don't use it again before consulting the doctor.
2. Don't use it in the bathroom or other humid places.
3. Unplug the power adapter from the socket before you clean and maintain it.
4. Unplug the power adapter when you are not using it.
5. Don't walk around when you are using this item or wearing the wraps.

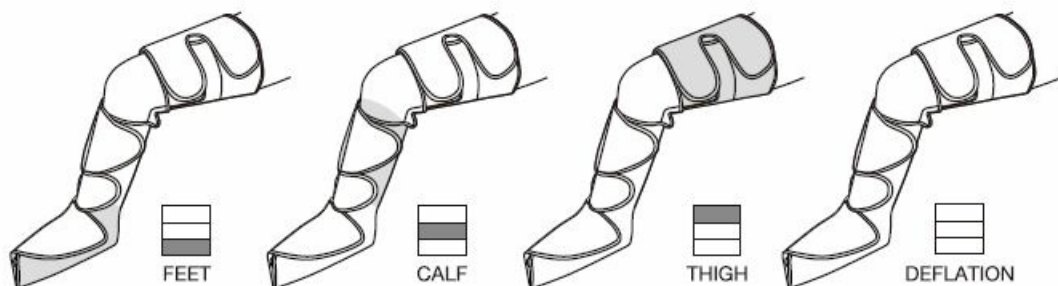
### TROUBLESHOOTING FAQ'S

#### How does this product massage?

- The wraps will be inflated and deflated in airbags to simulate kneading and stroking of tissues like human hands. It can relax our muscles, increase circulation and relieve pain.

#### How many massage modes, and what's the difference?

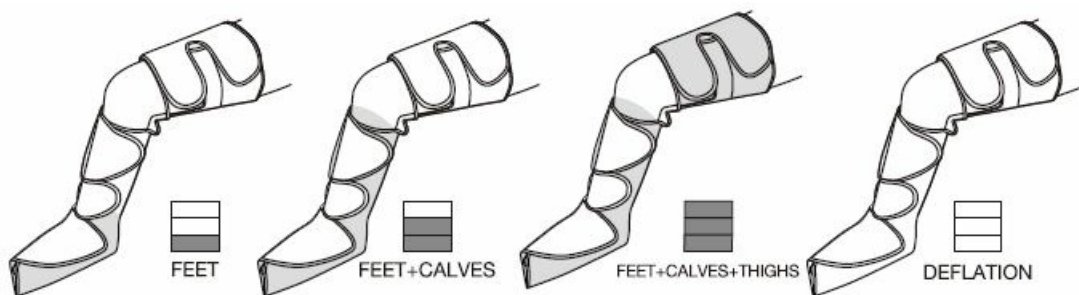
- There are 3 massage modes.
  - **Mode1: Sequence Mode**  
The air inflated and deflated from lower to upper, FEET inflated-deflated-CALF inflated- deflated-THIGH inflated-deflated, runs in repeat.



MODE1: Sequence Mode

- **Mode 2: Circulation Mode**  
The air inflated from lower to upper and then deflated, FEET inflated-CALF inflated-THIGH inflated- all

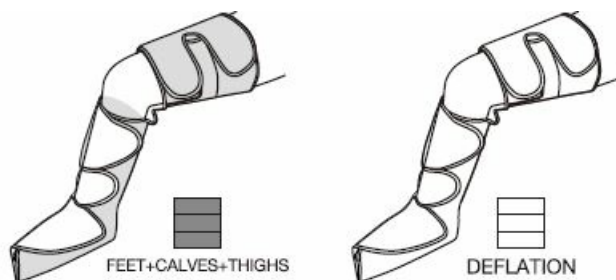
deflated, runs in repeat.



MODE 2: Circulation Mode

- **Mode 3: Whole Mode**

In this mode, sleeves will be inflated and deflated simultaneously and wholly.



MODE 3: Whole Mode

### What should I do if I feel the massage strength is too light or too tight?

- There are 3 levels of massage strength selectable via the controller, please select the intensity which is fit for you. You can also adjust the strength by changing the tightness of Velcro on the wraps.

### How long should I use it?

- It is recommended to use it once a day (20 minutes), up to 2 times (40 minutes)!

### Why does not it work when I press the power button?

- Please ensure both 2 air hoses are inserted into the controller, otherwise, it will not work.

### Why does the controller get hot?

- As we suggested, you can use it 20 minutes per time normally. If it keeps working too long, the controller will get hot, it's a normal phenomenon.

### Why does the controller make sound?

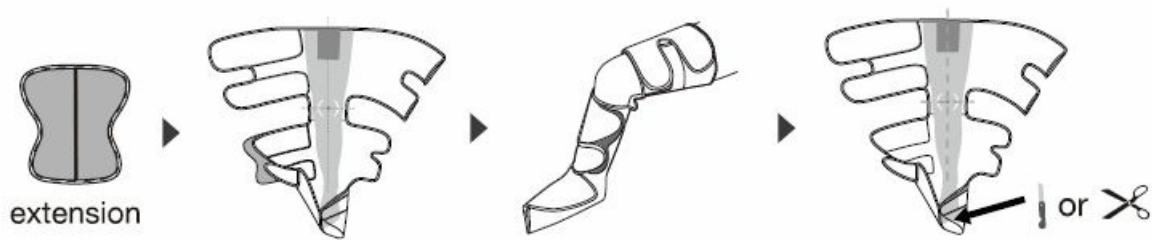
- The sound comes from the working air pump in the controller, providing air continuously to the airbags in the wraps, it's a normal phenomenon.

### What should I do if I feel the temperature is too hot?

- Please use the lower temperature or turn it off. We suggest you wear trousers if necessary.

## What should I do if I have bigger legs or feet?

- For bigger legs, please use the extensions included to expand the size of wraps. For bigger feet, please cut the stitches at the top of the toes part.



## NAMES OF COMPONENTS

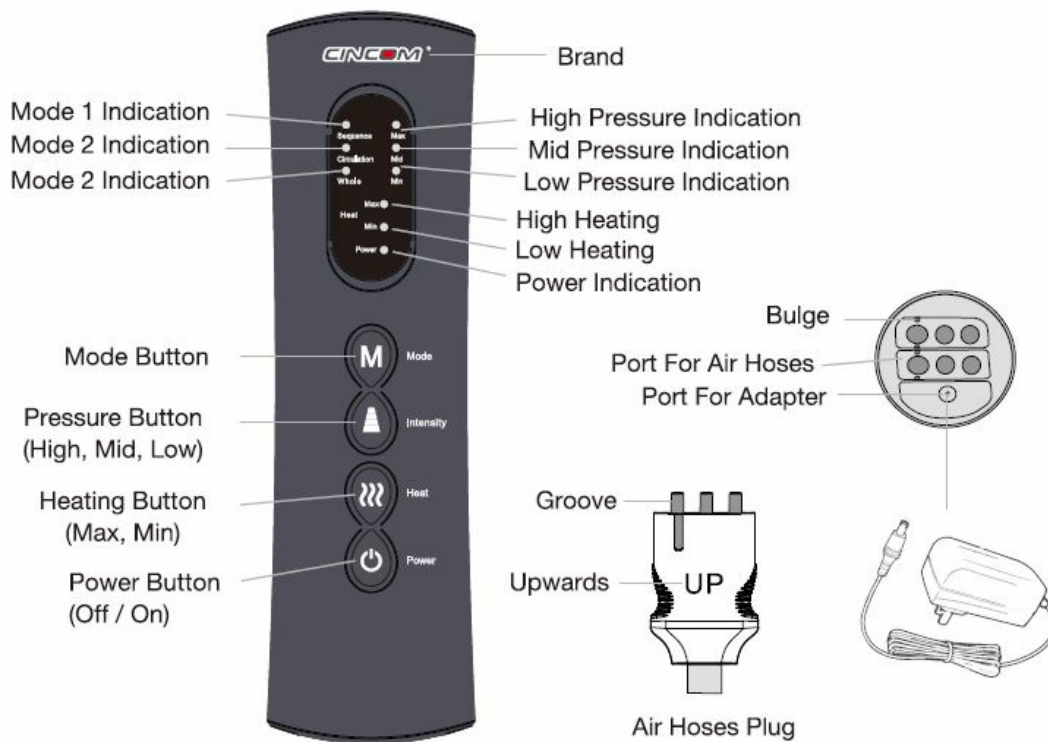
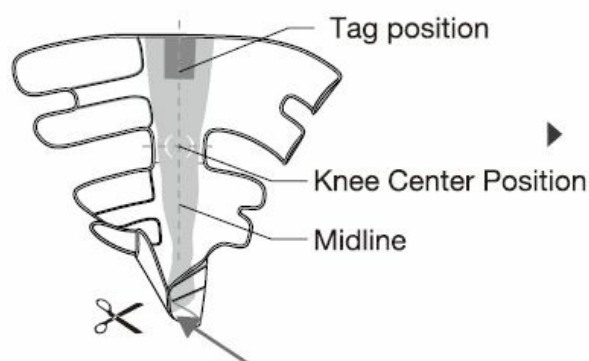


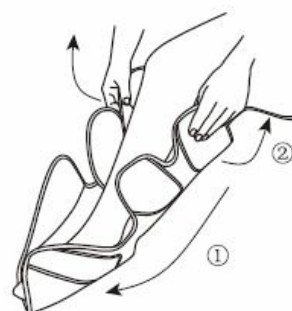
Diagram of the Controller

## OPERATING INSTRUCTIONS

1. Check the tags for Left/ Right Leg and the Midline, then wear the wraps properly.

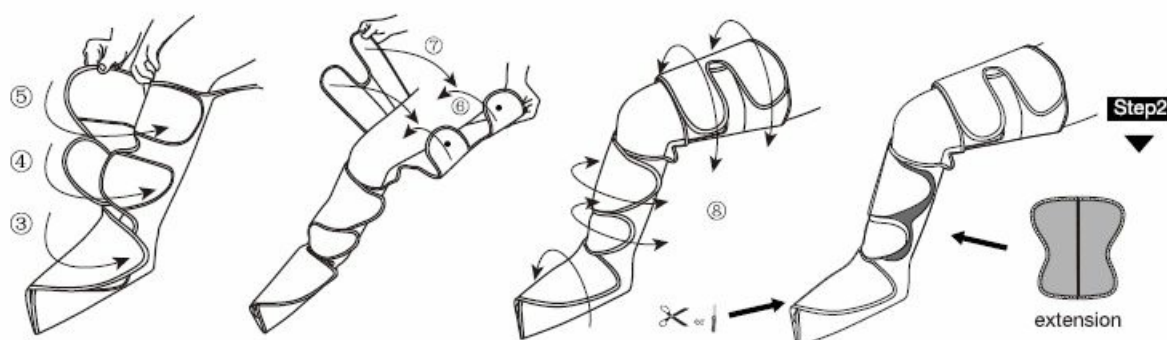


Cut the stitches here for bigger feet



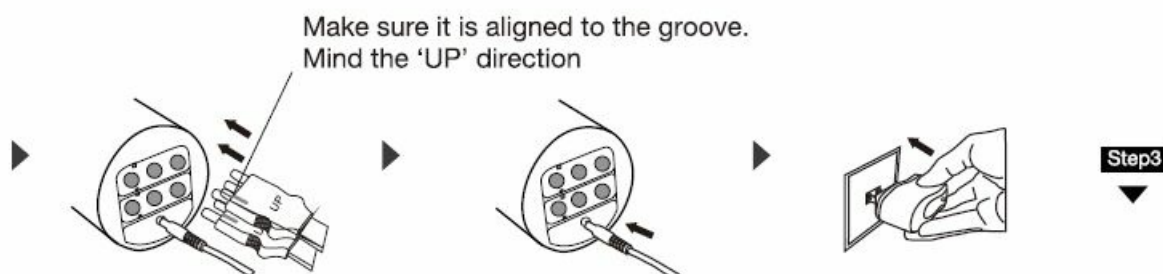
Step1

2. Fix the velcros, adjust the position and tightness, don't wrap too tight. Use the extensions for bigger calves, and cut the stitches for bigger feet. {see details in FAQs A9)



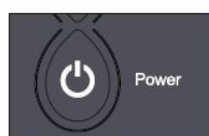
Step2

3. Insert BOTH two air hoses into the controller correctly and completely, then connect well the adapter to the outlet and controller.



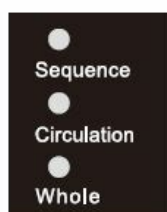
Step3

4. Take up the controller, and press the "Power" button to start. It will begin with Mode 1 / Min air pressure intensity / Heat off by default.



Step4

5. Press "Mode" button to change the message mode. 3 modes available, see the difference in FAQs A2 .



Mode Indicators

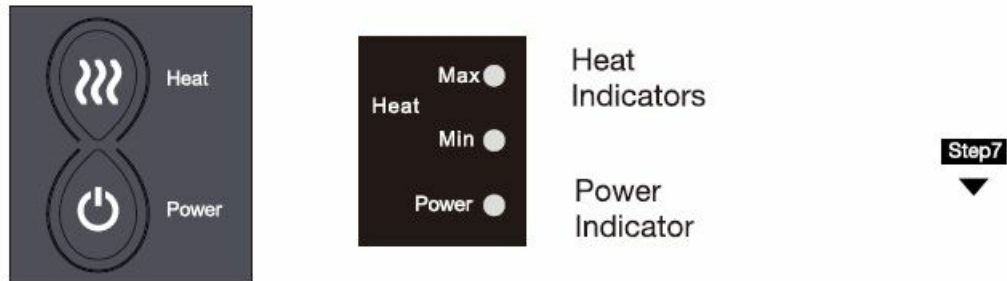
Step5

6. Press "Intensity" button to adjust air pressure intensity. 3 intensities available, we suggest you start with the minimum level. You can also adjust the intensity by the tightness of the wraps.



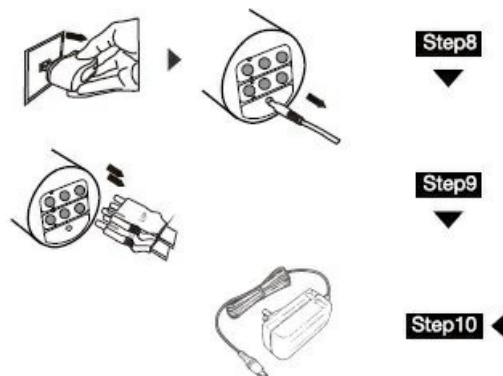


7. Press "Heat" button to turn on the heat function , 2 levels available. The Heat can be turn on/off anytime per preference.



**Note:** The device will automatically shut off after 20 mins operation, if you wanna enjoy more or end the massage earlier, press the "Power" button to turn it on / off.

### Notes After Use



- Unplug the power adapter from the socket
- Pull out the plugs of the power adapter and air hoses from the bottom of the controller
- Take off the wraps, fold them into the storage bag or box.

### MAINTENANCE

#### Make sure to cut off the power before you clean the device

1. If dirty, please wipe with a soft cloth moistened by soap solution.
2. Don't use gasoline, alcohol, diluent, and other irritating liquid to wipe the machine in case it causes malfunction or the components are damaged or discolored.
3. Do not hold the device under running water, do not submerge it in water or other liquids.
4. Don't allow foreign matters to enter the hoses.
5. Toothpicks can be used to remove the hair or chippings attached to the Velcros.
6. Don't disassemble the machine by yourself.

## STORAGE

1. Keep it out of the reach of children.
2. Don't place it in high temperature and humidity conditions.
3. Avoid direct sunlight.
4. Avoid needles puncture the airbags.
5. Don't place heavy stuff on it.

## DISPOSAL

- Please adhere to the local regulations when you dispose of the wasted

## TROUBLESHOOTING

Problems	Causes & Solutions
1. The product does not work, and the indicator light is off.	Make sure the power adapter is connected well and press the power button of the controller.
2. The product does not work, but the indicator light is on.	<ol style="list-style-type: none"><li>1. It works only when 2 air hoses are connected to the controller.</li><li>2. Please check if the air hoses are inserted correctly, (see "UP" mark)</li></ol>
3. Sudden interruption of operation.	<ol style="list-style-type: none"><li>1. The power adapter or air hoses fall off;</li><li>2. The massager works after 20 minutes and shut off automatically;</li></ol>
4. Too light or too tight	<ol style="list-style-type: none"><li>1. There are three massage levels for you to choose;</li><li>2. You can adjust the width of the wrap to make the strength suitable;</li><li>3. Turn off the machine if you cannot bear the strength.</li></ol>
5. The controller gets hot	It is normal if the controller gets hot after too long time use. We suggest you shut it down for 10 minutes.

## SPECIFICATIONS



Product Name	Air Compression Leg Massager With Heat
Model No	CM-067A
Rated Voltage	AC 100-240V 50-60Hz, DC12V/3A
Rated Power	36W
Weight	2.2 kgs / 4.6 lbs
Dimension	395x200x210 mm / 15.5x7.8x8.3 in
Heating Temperature	Test at ambient temperature 25°C ; High.;;;43 °C ; Low.;;;37 °c . Test at ambient temperature 40°C ; High.;;;50 °C ; Low.;;;45 °C. Heat PowerMax: 3w
Operating Conditions	Temperature: +5°C to 40°C ; Humidity : 5% to 90% non-condensing; Atmospheric Pressure : 75 kPa to 106 kPa
Storage Conditions	Temperature: -20°C to 55°C ; Humidity : 5% to 90% non-condensing; Atmospheric Pressure : 75 kPa to 106 kPa; Keep dry and avoid direct sunlight exposure.

## PACKAGE INCLUDES

- 2 x Massage Wraps (with air hose)
- 2 x Extensions
- 1 x Handheld Controller (main unit)
- 1 x Power Adapter/ DC12V 3A
- 1 x OPERATING INSTRUCTIONS
- 1 x Portable Carrying Bag

## CONTACT US

CINCOM provides a 2-year warranty and lifelong after-sale service. If you have any problems during using this product, please feel free to contact us. Our professional customer service team will help you!

- E-mail: [service@cincomhealth.com](mailto:service@cincomhealth.com)

**Note:** Please include the order number along with the problems you meet in the mail, videos & pictures are welcomed for better and faster service.

## **FREQUENTLY ASKED QUESTIONS**

What is the CINCOM CM-067A Leg Compression Massager designed for?

The CINCOM CM-067A Leg Compression Massager is designed for massaging the legs, feet, and thighs.

What is the power source of the CINCOM CM-067A Leg Compression Massager?

The CINCOM CM-067A Leg Compression Massager is powered by a corded electric source.

How much does the CINCOM CM-067A Leg Compression Massager weigh?

The CINCOM CM-067A Leg Compression Massager weighs 5.1 pounds.

What is the brand of the Leg Compression Massager described, and what is its model number?

The brand of the Leg Compression Massager is CINCOM, and its model number is CM-067A.

What are the color and dimensions of the CINCOM CM-067A Leg Compression Massager?

The CINCOM CM-067A Leg Compression Massager is black in color, and its product dimensions are 16.14 x 7.48 x 9.65 inches.

How does the 360° Wrap-around Full Leg Massager with Heat feature work on the CINCOM CM-067A model?

The 360° Wrap-around Full Leg Massager with Heat on the CINCOM CM-067A uses 2+2+3 large airbags to provide sequential compression, massaging the entire legs for relaxation and improved circulation.

What is the purpose of the effective air compression heating therapy in the CINCOM CM-067A Leg Compression Massager?

The effective air compression heating therapy in the CINCOM CM-067A mimics the skeletal muscle pump, offering safe, powerful, and effective compression while also warming the feet and calves to accelerate circulation.

How many modes and intensities does the CINCOM CM-067A Leg Compression Massager offer?

The CINCOM CM-067A Leg Compression Massager provides 3 massage modes and 3 intensities through its controller.

What are the two heating levels in the CINCOM CM-067A Leg Compression Massager?

The CINCOM CM-067A Leg Compression Massager features two heating levels for infrared heating on feet and calf areas.

How does the adjustable leg massager with heat and compression in the CINCOM CM-067A accommodate different leg sizes?

The CINCOM CM-067A Leg Compression Massager is made of silky fabric material with adjustable calf extension patches to fit legs up to 28.5 inches.

What is the material of the CINCOM CM-067A Leg Compression Massager, and how does it contribute to comfort?

The CINCOM CM-067A Leg Compression Massager is made of silky fabric material with thousands of air holes, providing comfort while wearing and wrapping tightly around the legs.

What is the auto shut-off setting in the CINCOM CM-067A Leg Compression Massager, and why is it designed for 20 minutes?

The 20-minute auto shut-off setting in the CINCOM CM-067A Leg Compression Massager is designed for safety and is based on over 1000-time product tests, ensuring appropriate massage duration.

What conditions or symptoms does the CINCOM CM-067A Leg Compression Massager claim to address?

The CINCOM CM-067A Leg Compression Massager aims to address stress, swelling, pain, fatigue, and circulation issues in the feet, calves, and thighs.

How does the CINCOM CM-067A Leg Compression Massager contribute to eliminating edema and relieving varicose veins?

The sequential compression and varying pressure levels of the CINCOM CM-067A Leg Compression Massager help in eliminating edema and relieving varicose veins by promoting circulation.

What are the 3 modes, 3 intensities, and 2 heating levels meant to achieve in the CINCOM CM-067A Leg Compression Massager?

The 3 modes, 3 intensities, and 2 heating levels in the CINCOM CM-067A aim to provide a customizable and effective massage experience catering to various user needs.

## VIDEO – PRODUCT OVERVIEW



[Download the PDF link to CINCOM CM-067A Leg Compression Massager Operating Instructions](#)  
[Compression-Massager-Operating-Instructions.mp4](#)

---

## References

- [User Manual](#)

[Manuals+](#), [Privacy Policy](#)