



cimetrics B3075 BACnet-IP to BACnet-IP Router User Guide

[Home](#) » [cimetrics](#) » cimetrics B3075 BACnet-IP to BACnet-IP Router User Guide 

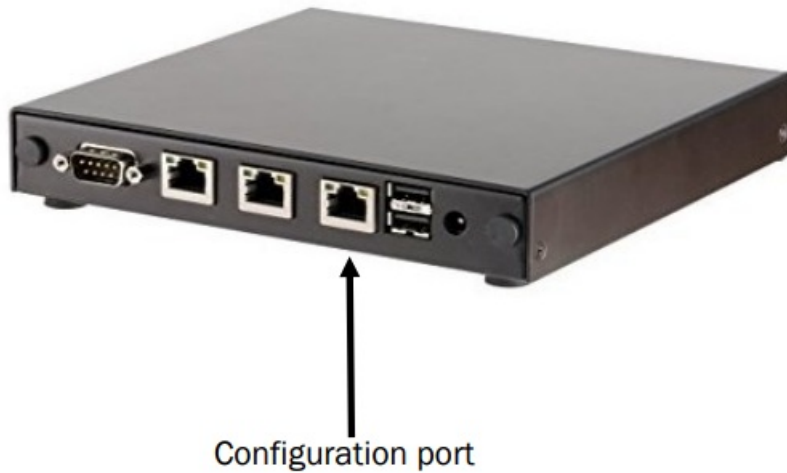
cimetrics B3075 BACnet-IP to BACnet-IP Router



Contents

- [1 B3075 Cimetrics BACnet/IP to BACnet/IP Router](#)
 - [1.1 Starting the B3075 for the first time](#)
 - [1.2 How to set the IP address on your Windows PC](#)
 - [1.3 Login to the B3075](#)
 - [1.4 B3075 Configuration: Partial Checklist](#)
- [2 Documents / Resources](#)
 - [2.1 References](#)
- [3 Related Posts](#)

B3075 Cimetrics BACnet/IP to BACnet/IP Router



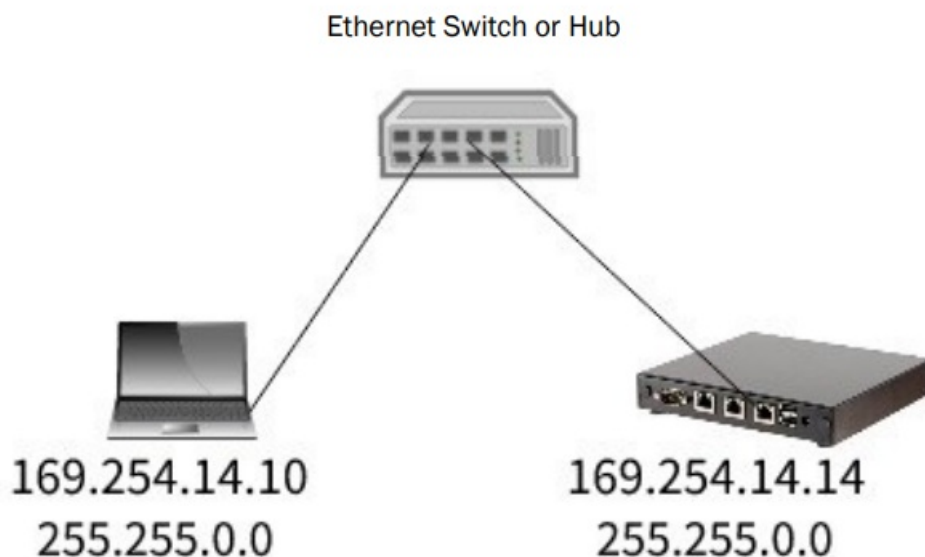
Starting the B3075 for the first time

You must configure your router before connecting it to a BACnet network

Before you can configure the router, you need to establish a connection between a PC and the B3075. Your **B3070/ B3075** has three Ethernet ports—one of them is a dedicated configuration port. Connect your B3075's configuration port and your PC's Ethernet port to an Ethernet network, as shown below; standard Ethernet cables should be used. The B3075's network communication parameters for its configuration port are preset and cannot be changed.

That port has a fixed IP address: **169.254.14.14**

The personal computer must not use DHCP, but rather it should use the following IP **address**: 169.254.14.10. The PC's Subnet Mask must be set to **255.255.0.0**.

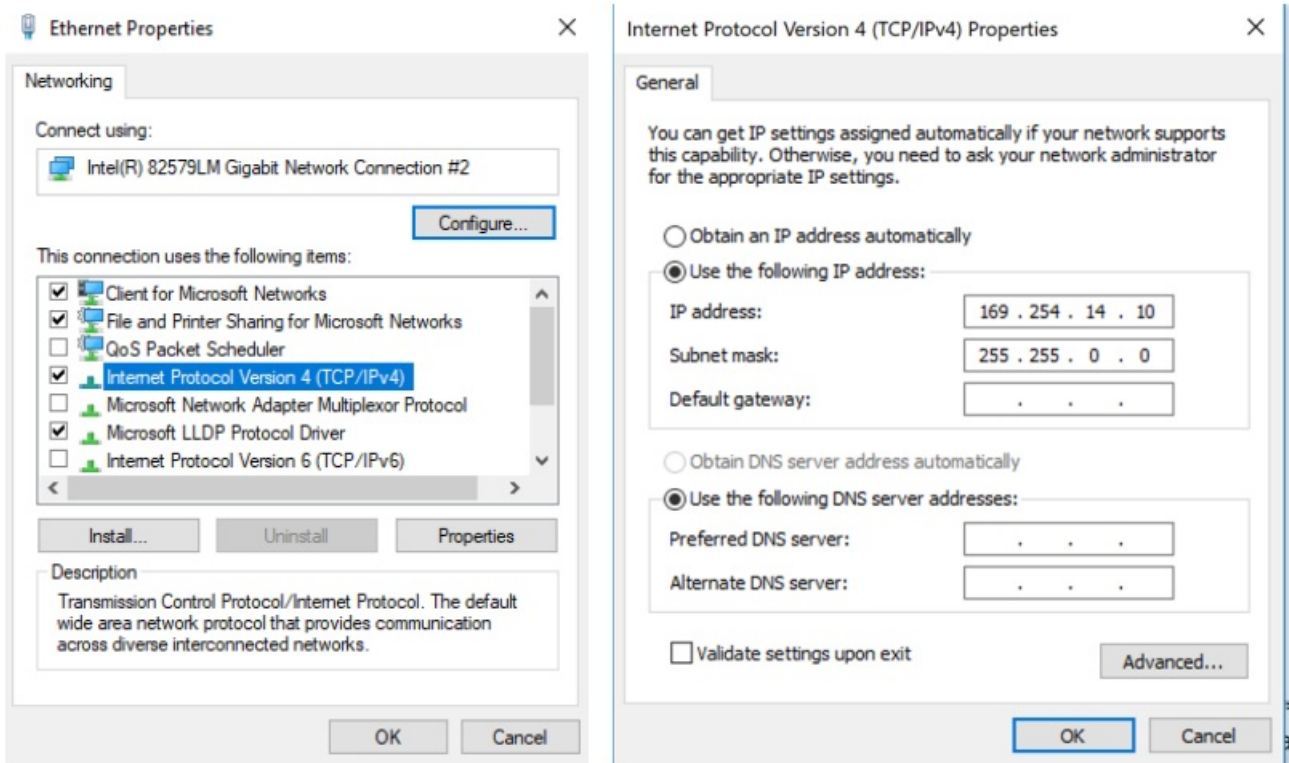


How to set the IP address on your Windows PC

To set your IP address, follow these steps:

1. Open the PC's Control Panel app.
2. Navigate to Network and Internet – Network and Sharing Center – Change Adapter Settings
3. Right click on the Ethernet adapter you are using to communicate – Properties — Internet Protocol Version 4 –


Properties – Use the following IP address — **169.254.14.10**
and Subnet Mask — 255.255.0.0. Click the “OK” button.




4. Now you are ready to communicate with the router

Login to the B3075

Plug your PC and B3075 (configuration port) into the same Ethernet hub or switch. On the PC, open a web browser and type the IP address of the B3075’s configuration port – 169.254.14.14 then press **ENTER**.

 The router must have completed the start-up phase (check that the Power LED in front is steady green); otherwise the required web pages will not be visible.
You will be prompted to login: The username is admin and the password is provided with your router (see the sticker affixed to the router).

 Keep the admin account password in a secure location and never lose it! If it is lost, you will need to reset the router to its factory defaults.

Once you login using the default admin account password, you will see a home page. See the reverse side for a partial list of the router’s configuration parameters.

Specifications are subject to change without notice. BACnet is a registered trademark of ASHRAE. Cimetrics and BACstac are trademarks of Cimetrics Inc. All other brand names are trademarks of their respective organizations. No endorsement of this product by any manufacturer or organization is implied. Copyright © 2018-2022 Cimetrics Inc. All rights reserved.

B3075 Configuration: Partial Checklist

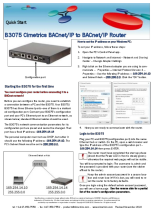
The first decision that you will need to make is whether to configure the B3075 to use GSA compliance mode. In

that mode, you will be required to set several parameters for proper operation on GSA's networks before the B3075 will function as a BACnet router, whereas in the non-GSA mode you will have more configuration flexibility. In any case, you will need to set several configuration parameters to appropriate values for your site's BACnet internetwork in order to ensure proper interoperation.

Feature	Items	Notes/Comments
BACnet Device	BACnet Device Instance Number	
Customer Network Interface (usually connected to the building's backbone network)	IP Address	
	Subnet Mask	
	Default Gateway IP Address (if needed)	
	BACnet UDP Port (typically 47808)	
	BACnet Network Number	
Private Network Interface (connected to a BACnet/IP LAN)	IP Address	
	Subnet Mask	
	BACnet UDP Port (typically 47808)	
	BACnet Network Number	
BBMD (optional, if needed on the Customer Network)	BBMD table (if BBMD functionality is enabled)	
Configuration Interface (used only for router configuration)	IP address = 169.254.14.14 fixed Subnet mask = 255.255.0.0 fixed Admin and read-only user account passwords	
Physical Space	DIN rail mounting—mounting dimensions are 6.5" hor. X 6.0" vert. x 1.25" deep. Allow approximately 1.0" inch gap from other equipment for air flow.	
AC Power	AC 100-240 Vrms, 50/60 Hz Type B (3 pin)	

Specifications are subject to change without notice. BACnet is a registered trademark of ASHRAE. Cimetrics and BACstac are trademarks of Cimetrics Inc. All other brand names are trademarks of their respective organizations. No endorsement of this product by any manufacturer or organization is implied. Copyright © 2018-2022 Cimetrics Inc. All rights reserved.

Tel: +1-617-350-7550 – fax: 617-350-7552 – products@cimetrics.com – www.cimetrics.com Revised November 2022



[cimetrics B3075 BACnet-IP to BACnet-IP Router](#) [pdf] User Guide
B3075 BACnet-IP to BACnet-IP Router, B3075, BACnet-IP to BACnet-IP Router, BACnet-IP Router, IP Router, Router

References

- [Cimetrics - BACnet Stack \(BACstac\), BACnet products, Analytika service](#)

Manuals+,