



Cigna AW201 WiFi Door and Window Smart Intelligent Alarm Instruction Manual

[Home](#) » [Cigna](#) » Cigna AW201 WiFi Door and Window Smart Intelligent Alarm Instruction Manual 



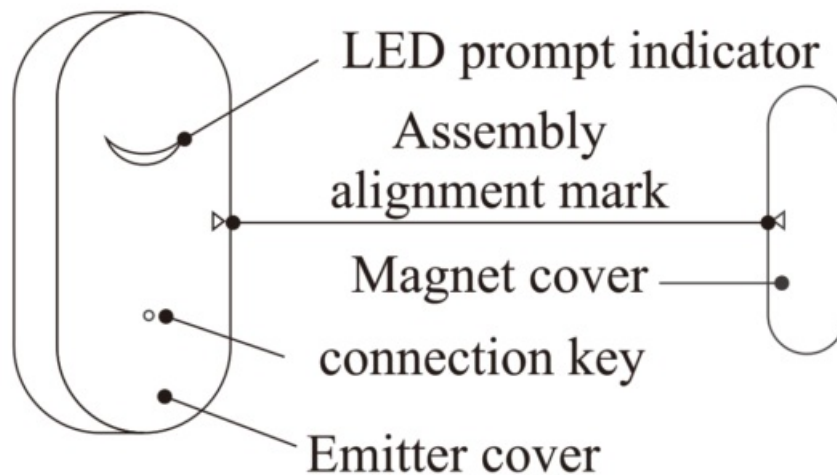
WiFi Intelligent Alarm

Operation
Instruction

Contents

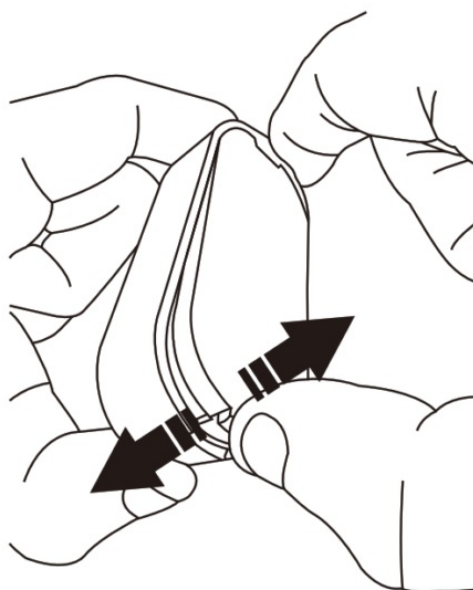
- [1 Appearance Introduction](#)
- [2 Installation](#)
- [3 Tuya smart](#)
- [4 Way for fixing and installation](#)
- [5 Maintenance](#)
- [6 Testin the emitter](#)
- [7 specifications](#)
- [8 Documents / Resources](#)
- [9 Related Posts](#)

Appearance Introduction

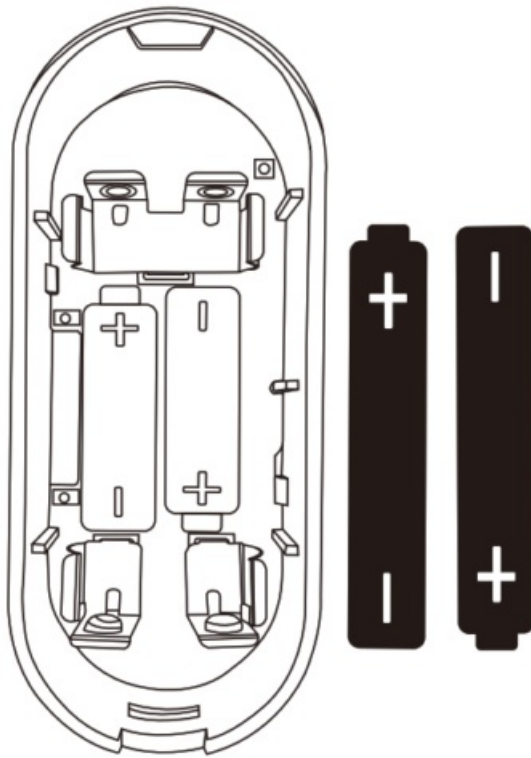


Installation

1. Way for battery installation
 - 1 Open the cover of the emitter

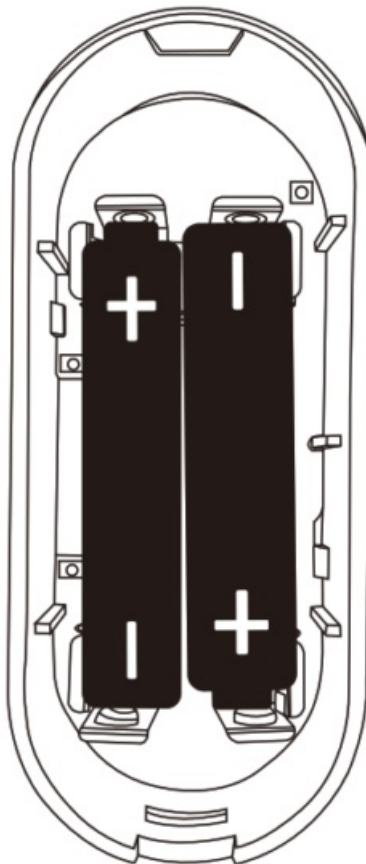


2. Place tow 7# batteries (AAAbatteries) Properly

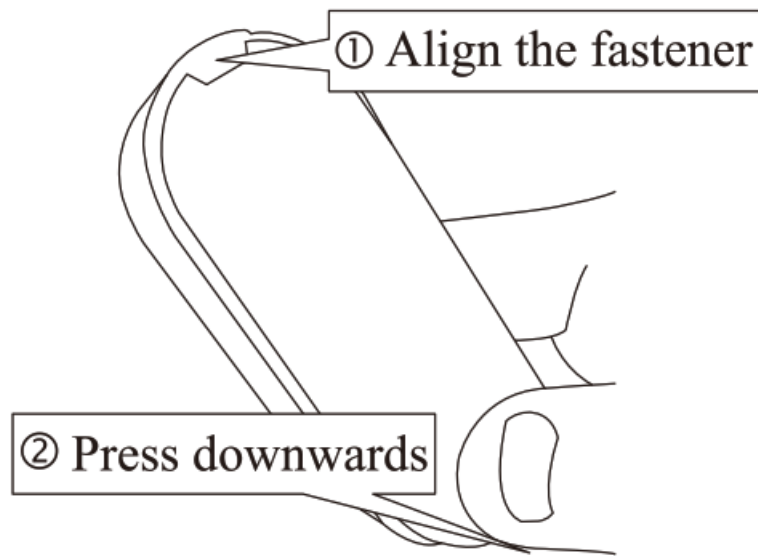


2 AAA batteries

3. End of battery installation





4. Close the rear cover

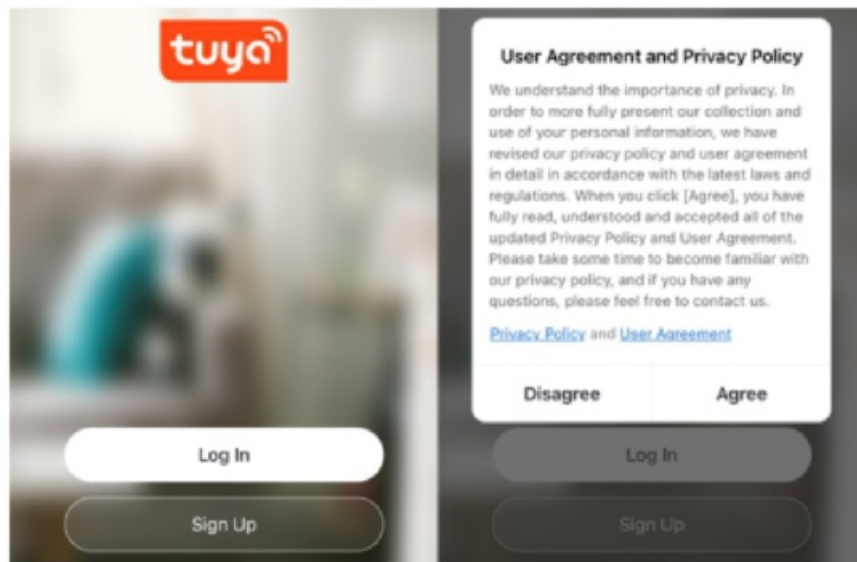


Tuya smart

1. Download APP

 <p>Tuya Smart</p>	 <p>Smart Life</p>
https://smartapp.tuya.com/tuyasmart	https://smartapp.tuya.com/smartlife

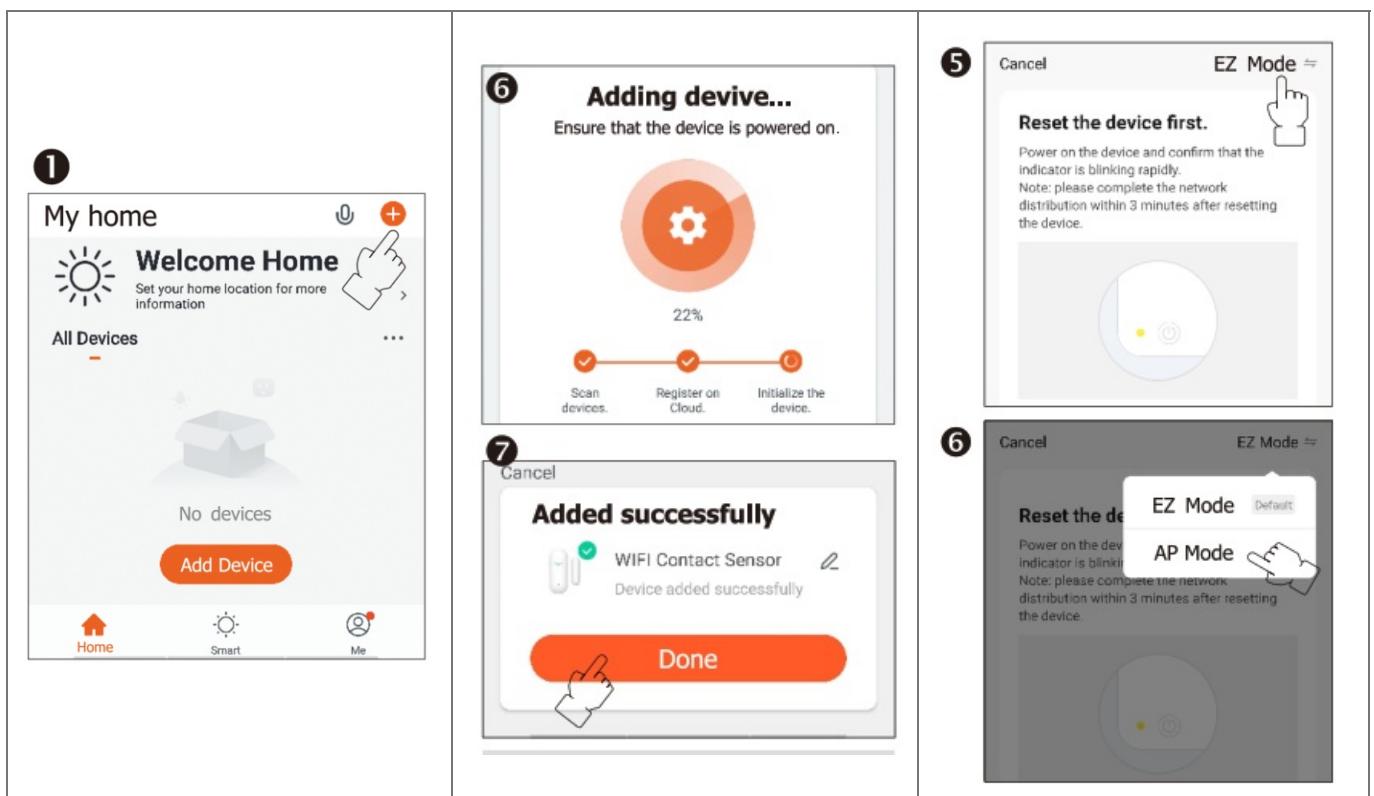
- Scan the two-dimensional code and download “Tuya Smart or (Smart Life)”.
 - OS: please download the “Tuya Smart or (Smart Life)” at apple application market.
 - Android: please download the “Tuya Smart or (Smart Life)” at application market.
- 2.Register/login Tuya Smart



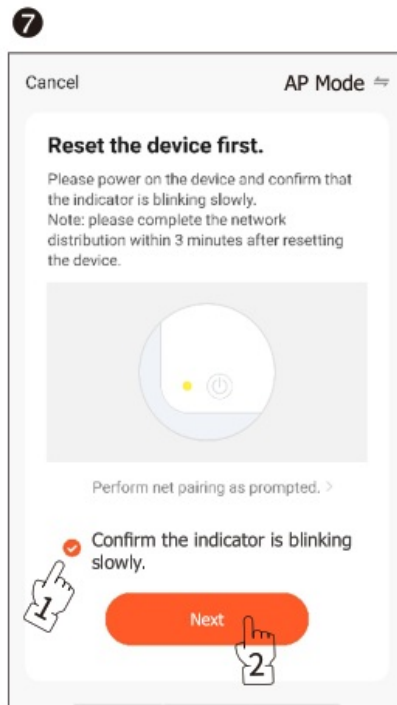
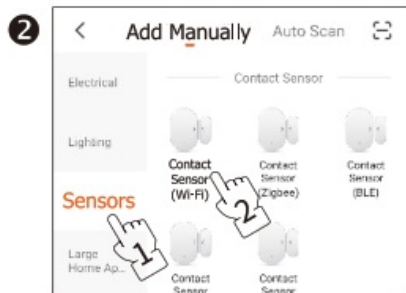
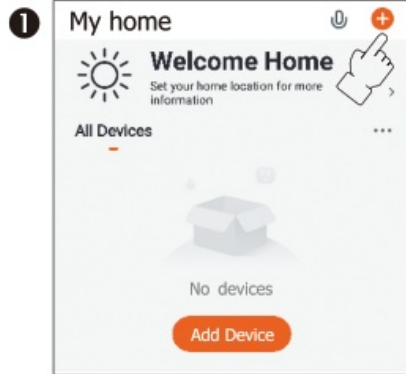
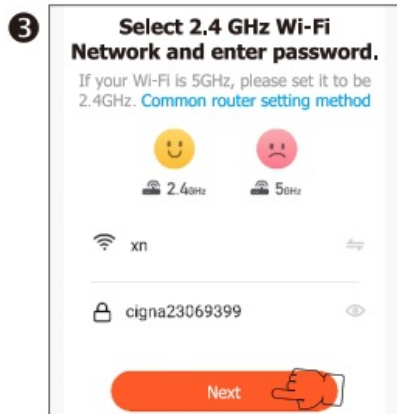
3 . Network with Mobil Phone (two methods)

Method 1:

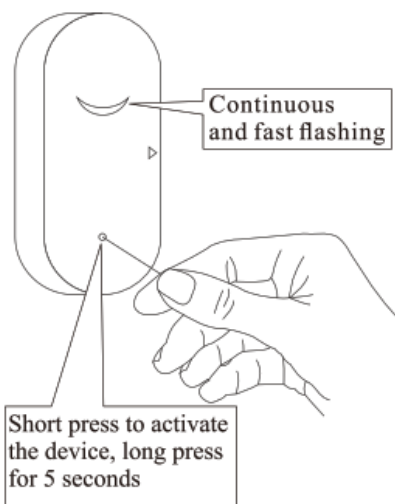
Wi -Fi Quick Connect



Method 2: Hotspot distribution network

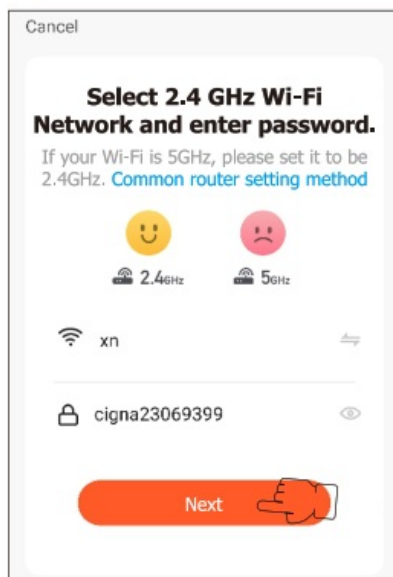


4



⚠ Observe whether the LED light flashes quickly

3

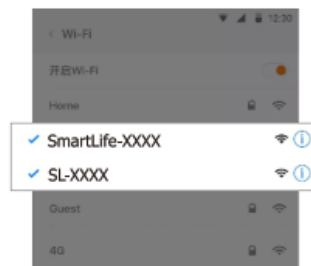


8

Cancel

Connect your mobile phone to the device's hotspot

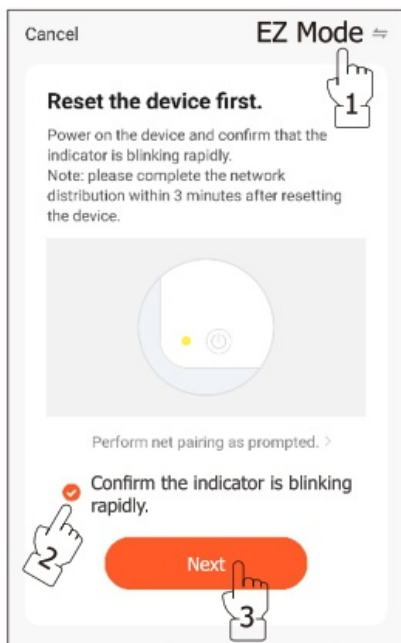
1. Please connect your phone to the hotspot shown below



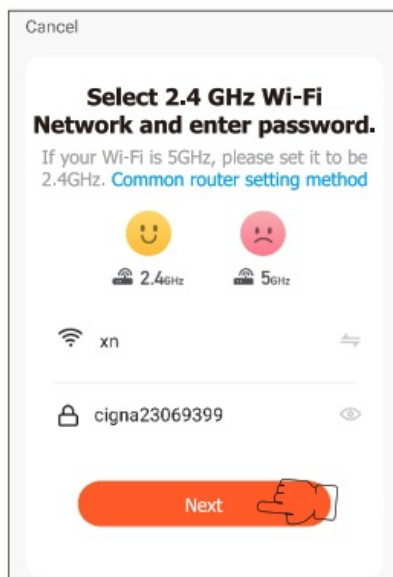
2. Return to this app and continue adding devices

Go to Connect

5



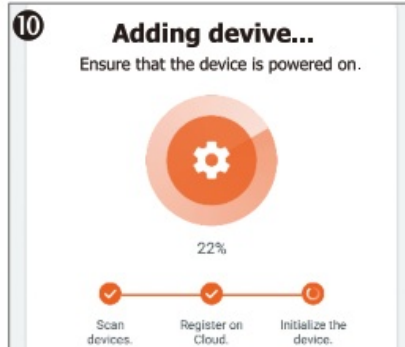
3

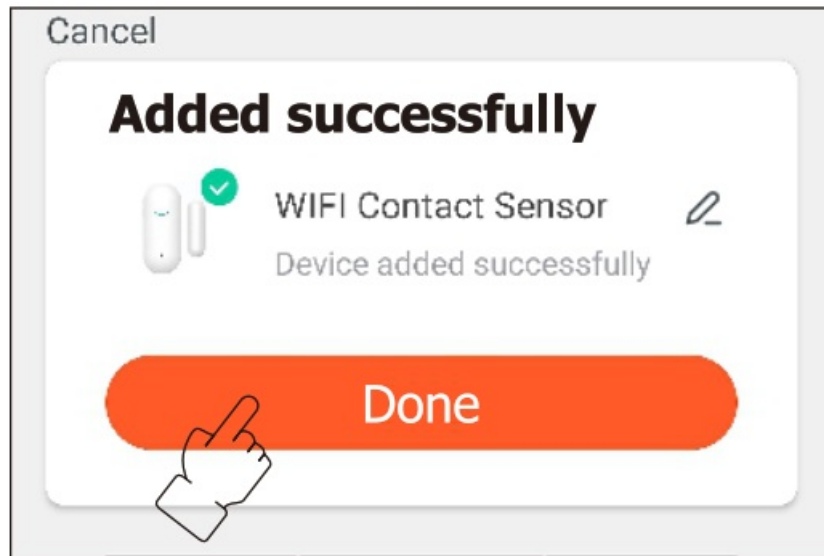


9



10





Way for fixing and installation

3M glue fixing @ Tear off each side of release paper on two foam glue, and attach two foam glues respectively onto the fixing surfaces of the emitter and the magnetic stripe (as shown in Figure 1). 0 Tear off the release paper on the back of the remitter and the magnetic stripe and attach it at the installation position of a door or a window (as shown in Figure 2).

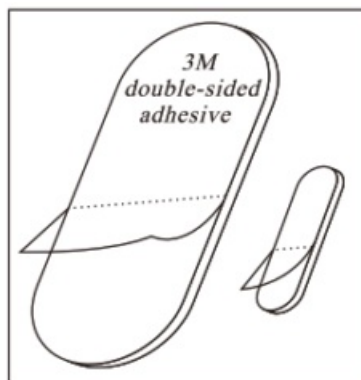


Figure 1

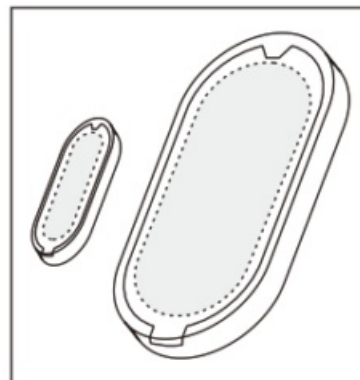
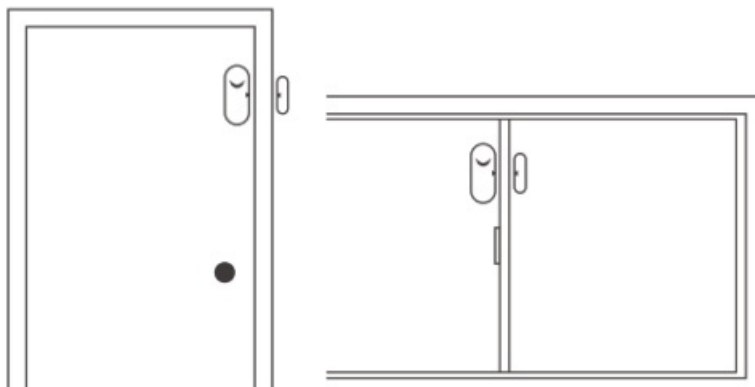


Figure 2

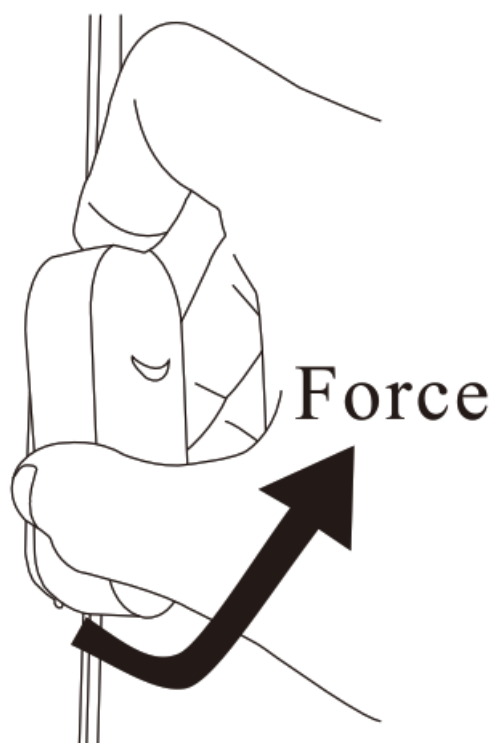


Maintenance

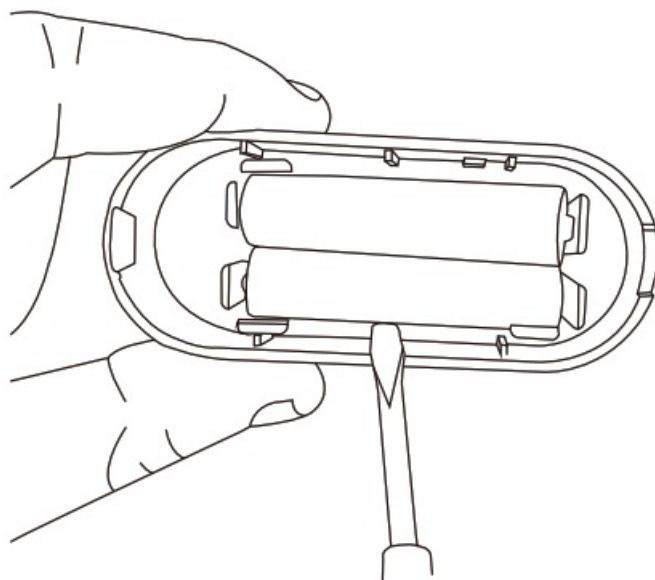
1. Change the battery's Battery lower power warning: When the battery power is lower than 20%, the APP will

warn that the battery needs to be replaced.

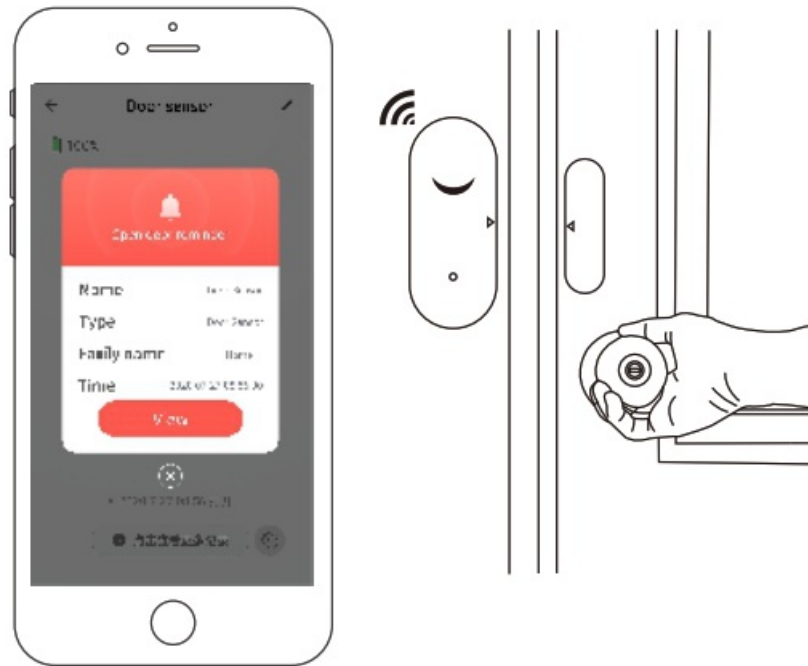
remove the outer casing



2. Use a screwdriver to take out the battery from the side



Testin the emitter



specifications

Working voltage; DC3V (LRO3AAA*2) Static current: 30RA Transmitting current: 35mA Working environment: 0°C – +50°C WiFi: IEEE 802 11 b/g/n 2.4GHz Alarm output: Tamper alarm,Open door reminder, Closing reminder, Low battery warning

FCC WARNING

This device complies with part 15 of the FCC Rules. Operation is subject to the following two conditions: (1) this device may not cause harmful interference, and (2) this device must accept any interference received, including interference that may cause undesired operation. Any changes or modifications not expressly approved by the party responsible for compliance could void the user's authority to operate the equipment. NOTE: This equipment has been tested and found to comply with the limits for a Class B digital device, pursuant to Part 15 of the FCC Rules. These limits are designed to provide reasonable protection against harmful interference in a residential installation. This equipment generates, uses and can radiate radio frequency energy and, if not installed and used in accordance with the instructions, may cause harmful interference to radio communications.

However, there is no guarantee that interference will not occur in a particular installation. If this equipment does cause harmful interference to radio or television reception, which can be determined by turning the equipment off and on, the user is encouraged to by to correct the interference by one or more of the following measures: — Reorient or relocate the receiving antenna. — Increase the separation between the equipment and receiver. — Connect the equipment into an outlet on a circuit different from that to which the receiver is connected. — Consult the dealer or an experienced radio/TV technician for help. To maintain compliance with FCC's RF exposure guidelines, This equipment should be installed and operated with a minimum distance between 20cm the radiator your body: Use only the supplied antenna.

Documents / Resources



[Cigna AW201 WiFi Door and Window Smart Intelligent Alarm](#) [pdf] Instruction Manual
AW201, 2A4ZY-AW201, 2A4ZYAW201, AW201 WiFi Door and Window Smart Intelligent Alarm,
WiFi Door and Window Smart Intelligent Alarm