

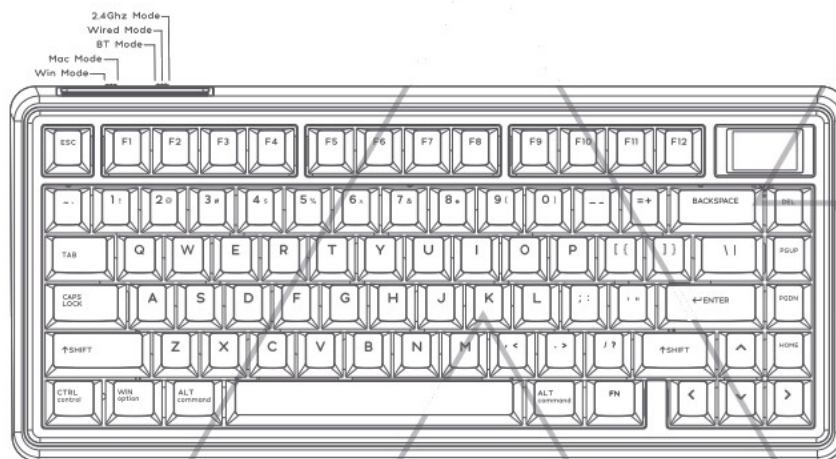


CIDOO ABM081 VIA Tri Mode Mechanical Keyboard User Guide

[Home](#) » [CIDOO](#) » CIDOO ABM081 VIA Tri Mode Mechanical Keyboard User Guide 



ABM081 VIA Tri Mode Mechanical Keyboard User Guide



Contents

- [1 ABM081 VIA Tri Mode Mechanical Keyboard](#)
- [2 USB Wired/BT5.0/2.4G Tri Mode Pairing Method](#)
- [3 LCD Setting](#)
- [4 Documents / Resources](#)
 - [4.1 References](#)

minimalistic design inheriting the originality style THIS IS EXACTLY WHAT I LIKE THANK YOU

Thank you for purchasing CIDOO STELLAR mechanical keyboard , We hope you will be pleased with both the product and service you received .

The following is a detailed introduction of the functions and operation method of this product.

Default Hot Keys

Hold FN+ listed keys to activate

Backlight setting

FN+↑: LED backlight brightness Increase

FN+↓: LED backlight brightness decrease

FN+_-_: LED backlight speed decrease

FN+=+: LED backlight speed increase

FN+BACK SPACE: LED toggle ON/OFF

FN+\\: Toggle LED backlighting mode

FN+→: LED hue increase

FN+←: LED hue decrease

FN+{: LED saturation increase

FN+ }: LED saturation decrease

Multimedia keys

- FN+F1: Music Player
- FN+F3: Volume +
- FN+F5: Stop/Play
- FN+F7: Play/Pause
- FN+F9: Email
- FN+F11: Calculator
- FN+ DELETE: INSERT
- FN+ PAGE DN: END
- FN+ENTER : Toggle LCD profile
- FN+F2: Volume –
- FN+F4: Mute
- FN+F6: Previous
- FN+F8: Next
- FN+F10: Web
- FN+F12: Search
- FN+ PAGE UP: HOME
- FN+WIN : Lock \Unlock Winkey
- FN+X : ON/OFF LCD
- FN+ SPACE: Long press FN+ space for 3 seconds to reset the keyboard to the factory setting

Windows and MAC OS

Toggle switch at the back of keyboard .Switch to left side is for Windows system ,to right side is MAC system .

USB Wired/BT5.0/2.4G Tri Mode Pairing Method

Wired Mode:

Please toggle the mode switch to the middle (USB mode). and then insert USB cable to your computer, the LCD lights on which means the connection is successful.

Perform the following steps to pair this keyboard with your device(s).

1. CIDOO STELLAR keyboard can be paired with up to three devices at the same time. Please toggle the mode

switch to the Bluetooth mode .The Bluetooth icon inside of the screen will flash .Long press FN + Q or FN+W or FN+E for 3~5 seconds to enter pairing mode. BT1/BT2/BT3 icon of the screen will flash quickly indicates that keyboard is ready to connect.

2. Open the Bluetooth settings on your device and scan for available devices.

Locate and select the device name entry. "CIDOO STELLAR-1" for FN+Q ;

"CIDOO STELLAR -2" for FN+W , "CIDOO STELLAR-3" for FN+E .

3. Once the keyboard has connected to your device, the Bluetooth icon of the screen will cease flashing indicates Bluetooth pairing was successful. Short press "FN" and "Q" or "FN" and "W" or "FN" and "E" keys switch to another paired Bluetooth device.

The Bluetooth connection has memory . It will disconnect when power off the keyboard ,and the keyboard will re-connect to the last device when turned on .

2.4Ghz connection Instruction:

Please toggle the mode switch to 2.4Ghz mode . Screen will flash 2.4G icon quickly .Plug the receiver into USB port of the device ,2.4g icon will cease flashing and light on which means the connection is successful.

Auto sleep mode

In Bluetooth and 2.4G mode, after 3 minutes without key press ,the LCD will turn off to conserve the battery , any key press will be awoken the keyboard.

In Bluetooth mode, the deep sleep mode will be entered after 30 minutes without key press, and the Bluetooth is disconnected. Press any key to exit the deep sleep mode, the LCD will turn on and re- connect to Bluetooth.

Battery Charging Indicator

When the battery power of the keyboard is low (the battery power is less than 3.5V), the battery icon of the screen will become red . Also , screen will show charging icon when keyboard is charging .

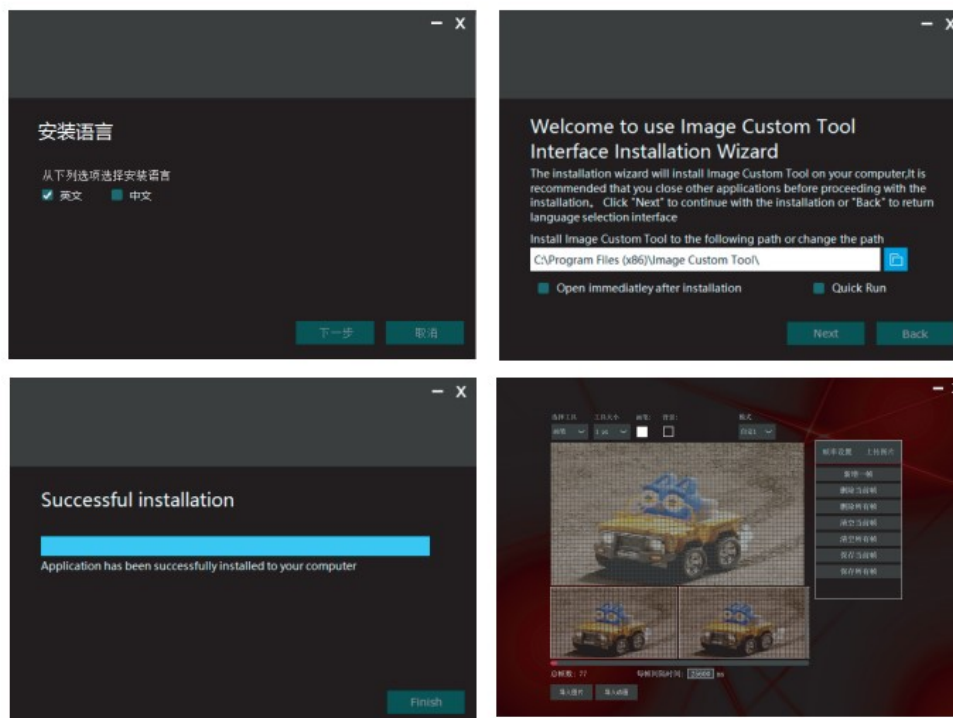
LCD Setting

Custom the wallpaper

CIDOO STELLAR support custom animation and static picture. Total 2 sets can be customized .

Please download Image Custom Tool from distributor and install it to your PC .

Open the Image Custom Tool .choose picture and upload all frames . See below 4 steps:



Custom Configuration

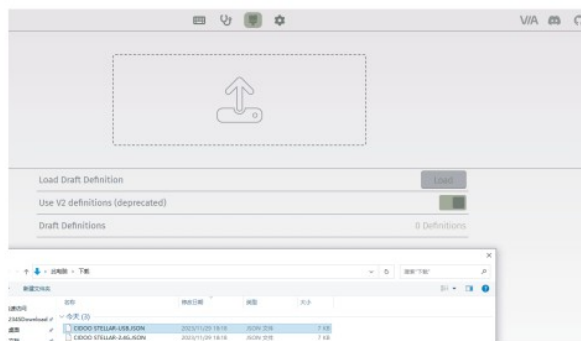
CIDOO STELLAR supports using the VIA program to change key layout

Note Make sure your keyboard is properly plugged into your computer .
VIA installation steps are as follows:

1. Please visit <https://github.com/WestBerryVIA/via-releases/releases> to download the VIA application for your computer's OS here. Open VIA software and pls click Use V2 definitions (deprecated) .As following photo shows:



2. Download CIDOO STELLAR -2.4G.JSON and CIDOO STELLAR -USB. JSON files from distributor website. and click load to Import JSON file accordingly .See following photo.
(Note : Please use USB JSON files in wired mode. Use 2.4G JSON in 2.4G mode)



3. Installation is completed and VIA software connected successfully if show below picture .



If the VIA software cannot recognize your keyboard, please reach out our support to get the instruction.

VIA automatically detects your compatible keyboard if it's plugged in.

Keyboard memory is persistent, which means that wherever you plug in keyboard, it remembers the settings.

On the top half of VIA software, choose one key by your mouse, and then select the key that you wanted on the bottom half of VIA software, and it was effected.

Firstly switch to VIA software key tester table, there is not any background color before you press any keys, when you want to test this key you have programmed, press it and the background color will change to red color means it works, otherwise it is not work.

See below for more information about configuration

Macros setting

CIDOO STELLAR is configured with 4 layers from 0 to 3 by default, and each individual key can have multiple functions.

This is important for smaller keyboards, where there aren't enough physical keys to do all the functionality you need.

Special keys setting

Here you can remap the key to replace the special key to the key you want, to achieve the quick operation of the function.

CIDOO STELLAR VIA software provides many different RGB lighting effects by default. You can change the

lighting brightness, speed, color and customize the lighting effect you want. You can also change the key to operate the lighting effect you set.

About Layers

CIDOO STELLAR default customized 0-3 layer keyboard layout.

Layer0 This layer will be activated when your keyboard connected to the Windows system.

Layer0 This layer will be activated when your keyboard connected to the Mac system. Left Alt=Left Option Left Win=Left Command Right Alt= Right Option



Layer 1: When the keyboard connect to Win/Mac system device, long press Fn1(3) key ,layer 1 will be activated .



Layer 2: When the keyboard connect to Win/Mac system device, remapped any keys to MO(2),long press MO(2) key ,layer 2 will be activated .



Layer 3: When the keyboard connect to Win/Mac system device, remapped any keys to MO(3),long press MO(3) key ,layer 3 will be activated .




Key description

Hue-F	Hue Increase	BT 2	Bluetooth Device 2
Sat+	Light Saturation+	BT 3	Bluetooth Device 3
RGB Md+	Next RGB Mode	Brght+	Backlight Increase
RGB Tog...	Toggle RGB ON/OFF	Lock Win	Lock Windows Key
Win...	Windows Mode	USB Mode	USB mode
Mac...	Mac Mode	RGB SPD	RGB Speed Decrease
Hue-	Light Saturation-	Brght-	Backlight Decrease
Sat-	Light Saturation-	RGB SPI	RGB RGB Speed Increase
BT 1	Bluetooth Device 1		
Fn1(3)	Layer 1 will be activated when holding his key		
MO(2)	Layer 2 will be activated when holding this key		
MO(3)	Layer 3 will be activated when holding this key		

Shenzhen Cidoo Technology Co.,Ltd

Add.: 104, Building 26, Changchun Garden, Changchun Road, Gongming Community, Gongming Street, Guangming District, Shenzhen City, Guangdong Province, China TEL.+86- 755-33922600

Website: Executive Standard: GB14081-2010


Copyrights and statements:  and other cidoo trademarks are owned by Cidoo company ,and may have applied for registration. All other trademarks are the property of their respective owners .and Cidoo is not responsible for any errors that may appear in this product .

All pictures shown are for illustration purpose only and the characteristics of the product may vary without prior notice .




<http://weixin.qq.com/r/Z0QcBALEml-IrUZn9xF1>

Documents / Resources

	<p>CIDOO ABM081 VIA Tri Mode Mechanical Keyboard [pdf] User Guide</p> <p>ABM081, ABM081 VIA Tri Mode Mechanical Keyboard, VIA Tri Mode Mechanical Keyboard, Tri Mode Mechanical Keyboard, Mode Mechanical Keyboard, Mechanical Keyboard, Keyboard</p>
---	--

References

-  [Releases](#) · [WestBerryVIA/via-releases](#) · [GitHub](#)
- [User Manual](#)

[Manuals+](#), [Privacy Policy](#)

This website is an independent publication and is neither affiliated with nor endorsed by any of the trademark owners. The "Bluetooth®" word mark and logos are registered trademarks owned by Bluetooth SIG, Inc. The "Wi-Fi®" word mark and logos are registered trademarks owned by the Wi-Fi Alliance. Any use of these marks on this website does not imply any affiliation with or endorsement.