



CHUBORY A68 Super Enduring Brushless Motor Drone User Guide

August 18,
2025

CHUBORY[®]

AGE 14+

Contents [[hide](#)]

1 Quick Start Guide

1.1 A68

1.1.1 DIAGRAM OF THE DRONE

1.1.2 DIAGRAM OF THE TRANSMITTER

1.1.3 1 CHARGING

1.1.4 2 GET THE DRONE READY

1.1.5 3 GET THE TRANSMITTER READY

1.1.6 4 PAIRING

1.1.7 5 CALIBRATE THE GYRO

1.1.8 6 CONNECT TO WIFI

1.1.9 7 TAKE-OFF

1.1.10 8 FLIGHT DIRECTION CONTROL

1.1.11 9 HEADLESS MODE

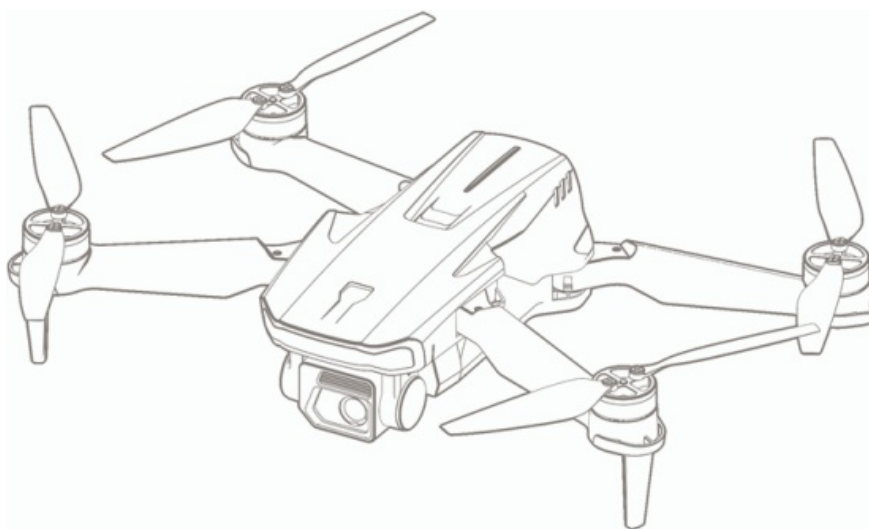
1.1.12 10 LANDING

2 Documents / Resources

2.1 References

Quick Start Guide

A68



chubory@qq.com

www.chubory.com



Download the CHUBORY FUN App

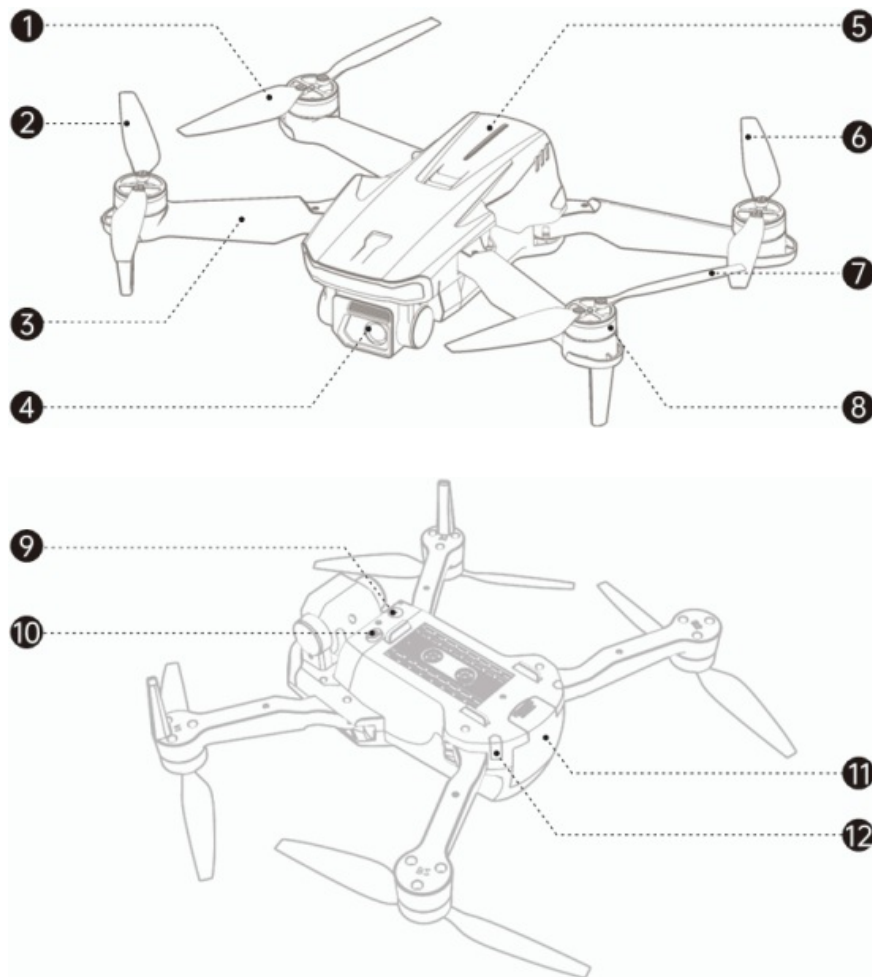


watch the tutorial video



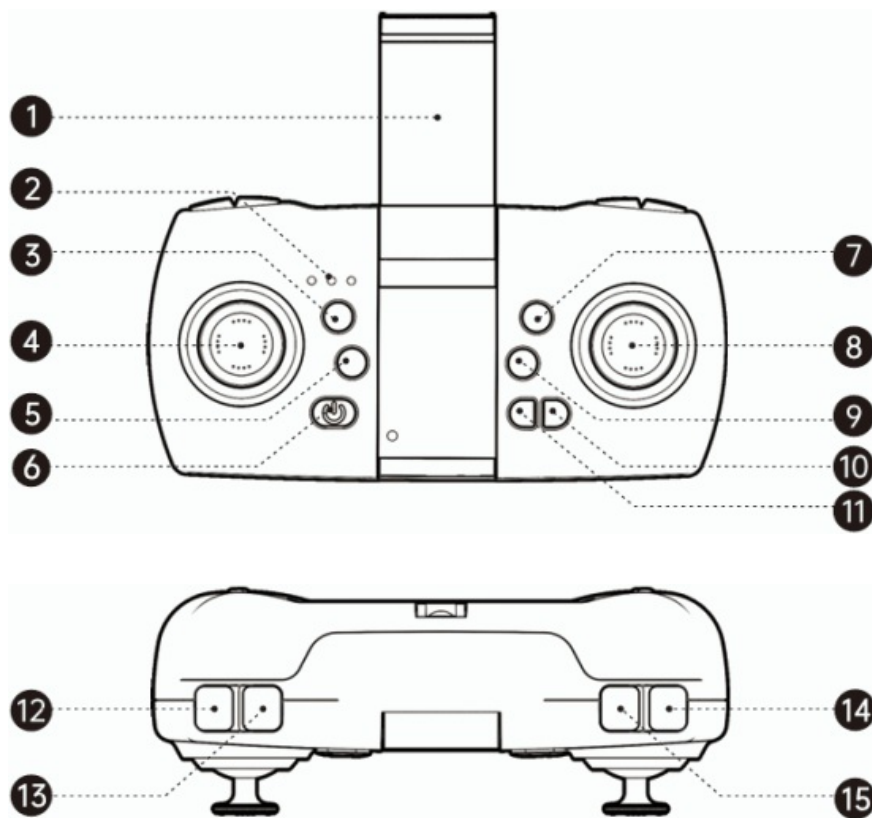
view the instruction for use

DIAGRAM OF THE DRONE

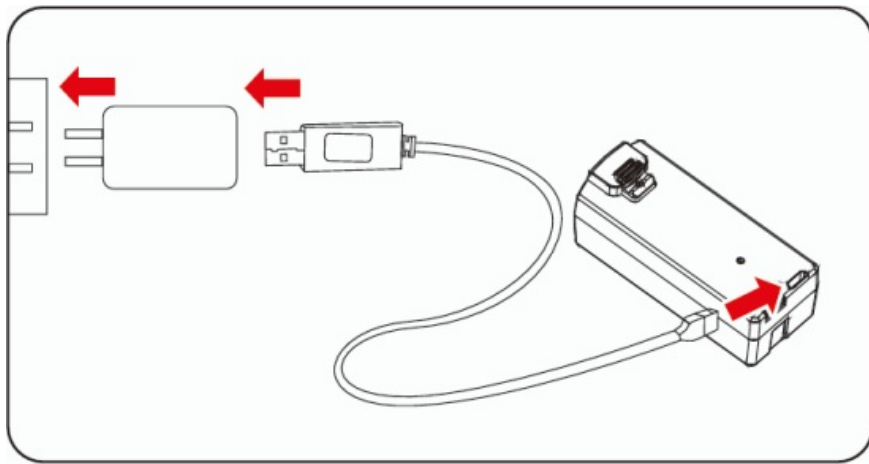


- (1) Propeller A
- (2) Propeller B
- (3) Arm
- (4) Wifi Camera
- (5) Upper Casing
- (6) Propeller B
- (7) Propeller A
- (8) Brushless Motor
- (9) Optical Flow Lens
- (10) Power Switch
- (11) Drone Battery
- (12) Indicator Light

DIAGRAM OF THE TRANSMITTER



- (1) Mobile phone clip
- (2) Indicator
- (3) One-key ascend
- (4) Left joystick
- (5) One-key landing
- (6) Power switch
- (7) Camera upward
- (8) Right joystick
- (9) Camera downward
- (10) Fine-tuning key
- (11) Press 3 seconds to stop
- (12) High/Low speed
- (13) Headless mode
- (14) One-key flips & rolls
- (15) Calibration

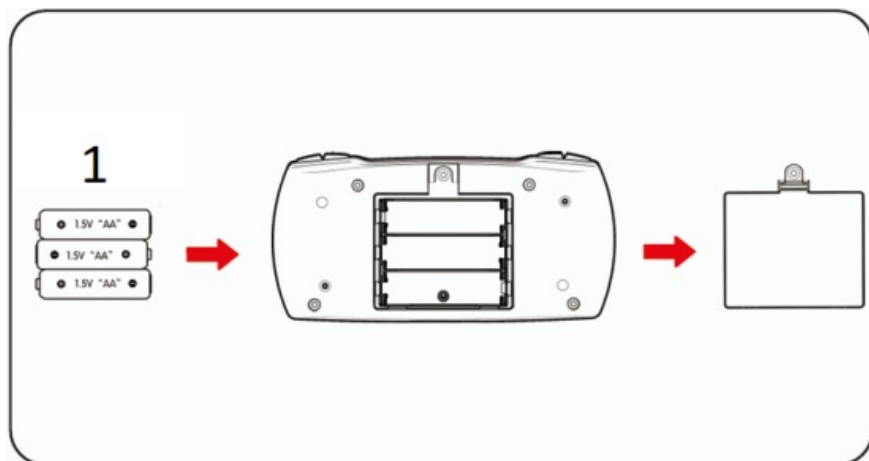


● Charging

● Fully charged (off)

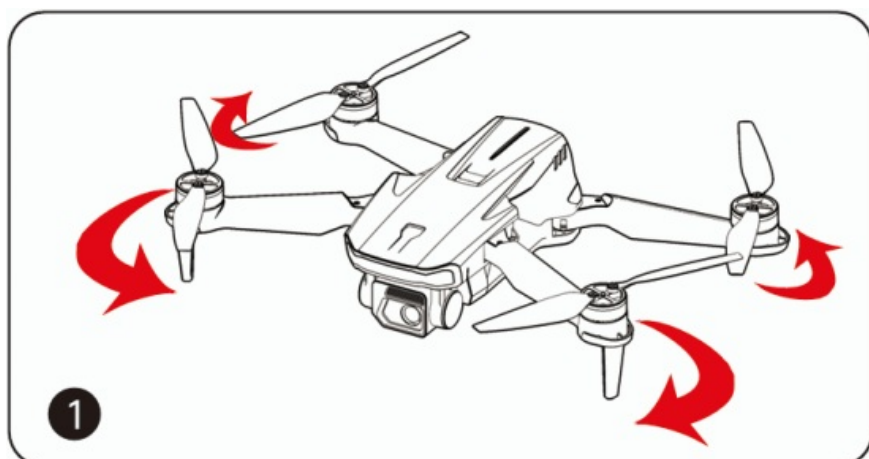


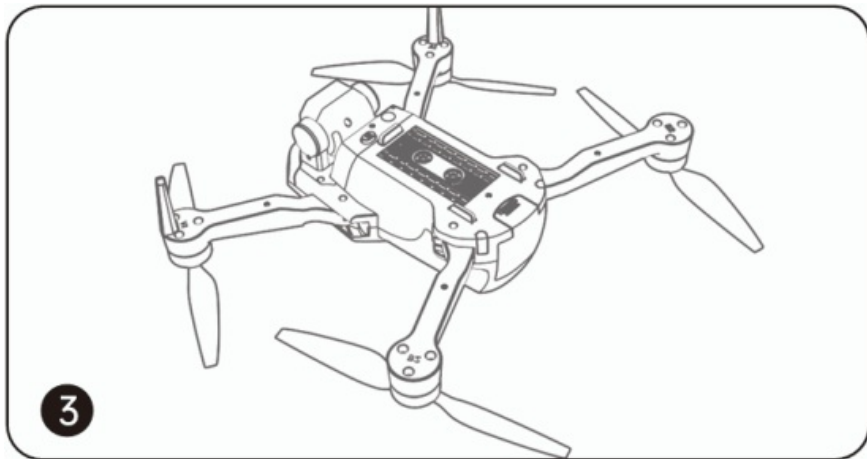
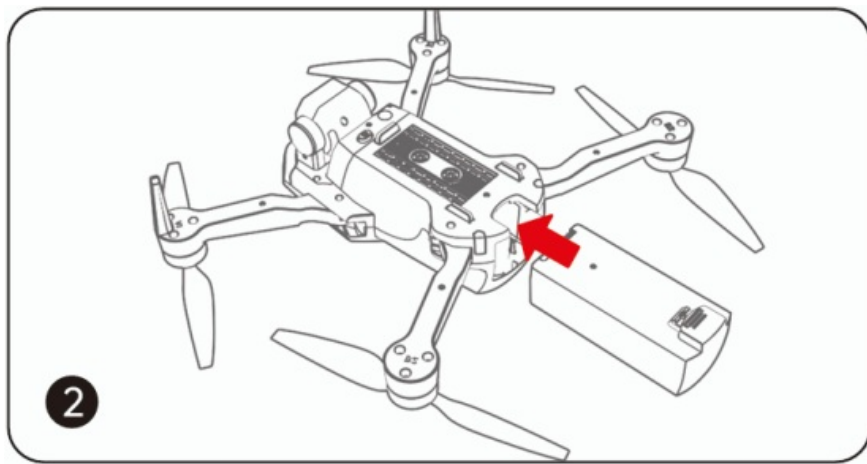
To charge each battery with a 5V=2A charger, it takes approximately 4-6 hours.



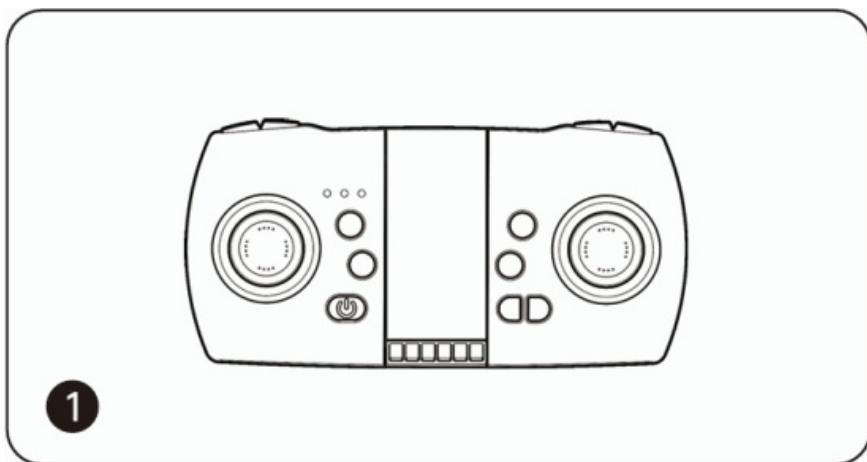
1. AA batteries

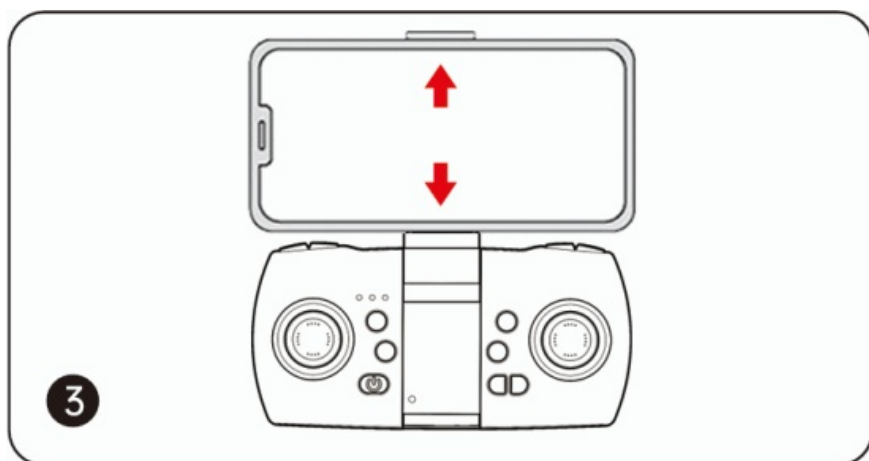
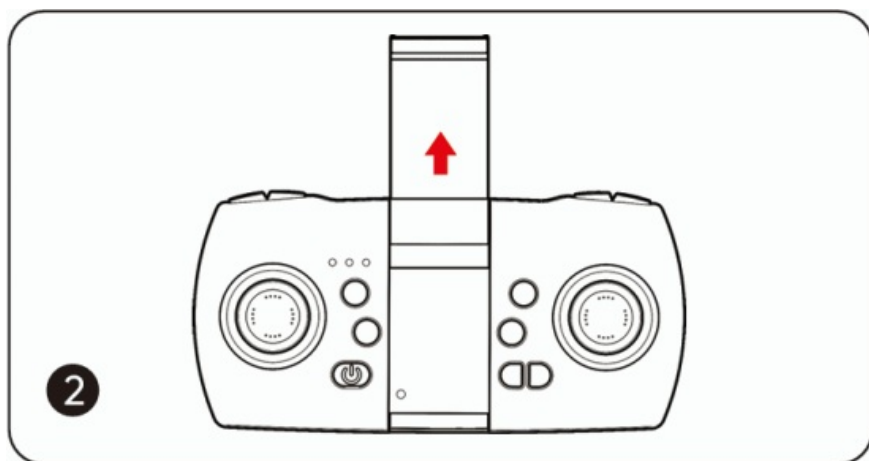
2
GET THE DRONE READY



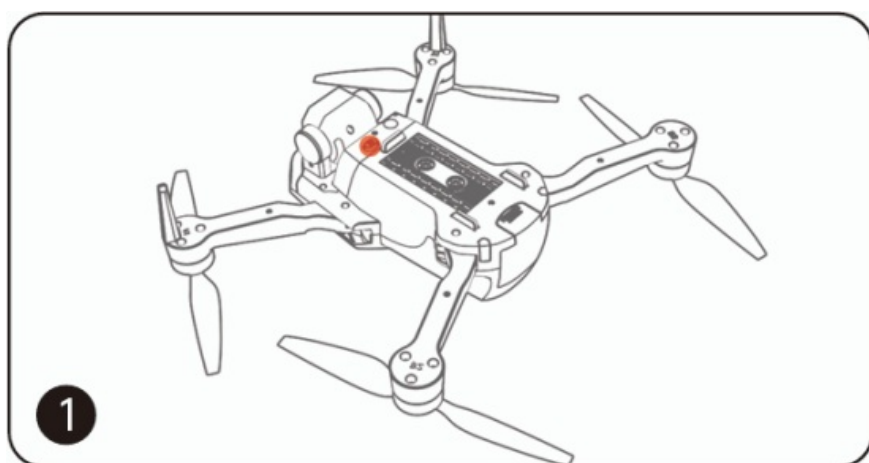


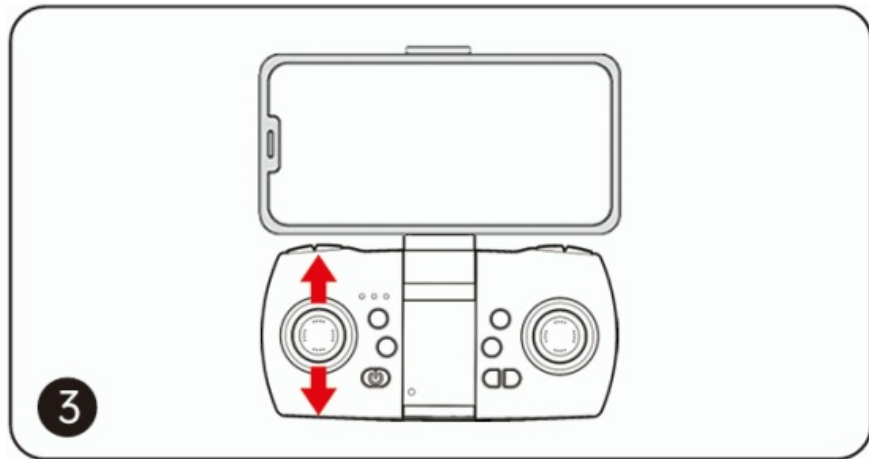
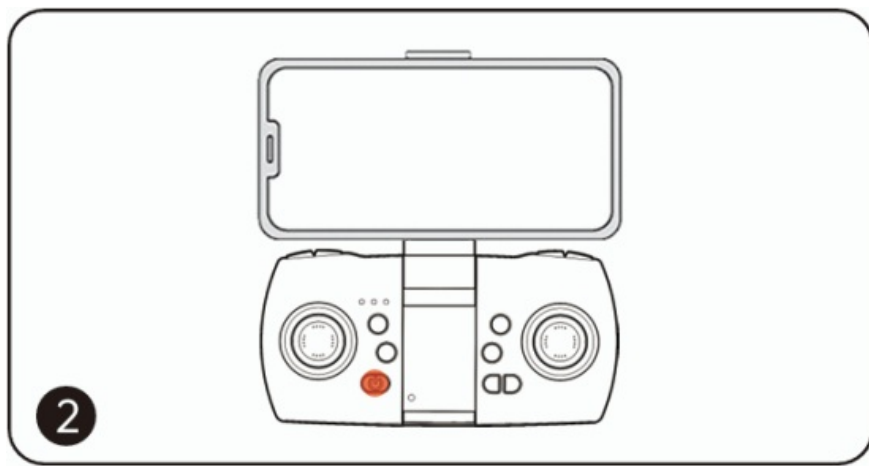
**3
GET THE TRANSMITTER READY**





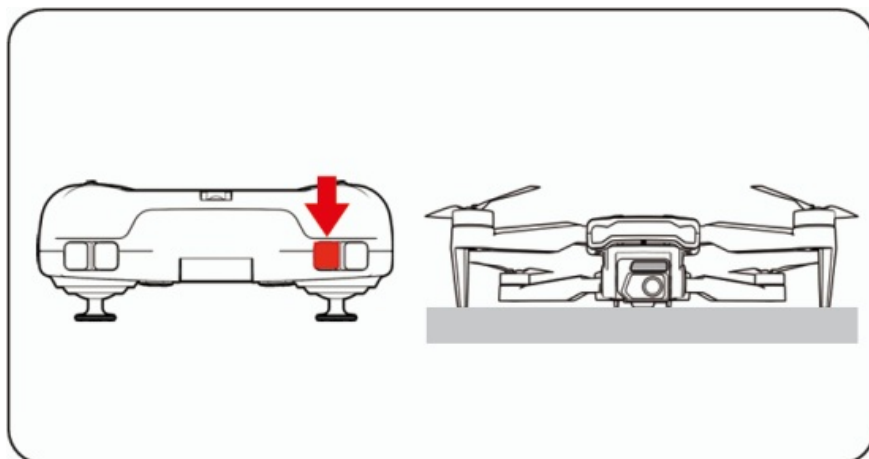
4 PAIRING





💡 Place the drone on a level ground and turn on the power, and then turn on the power of the remote control. Push the throttle joystick to the highest point then push back to lowest point, the light changes from flashing to steady, indicating the signal connection is completed.

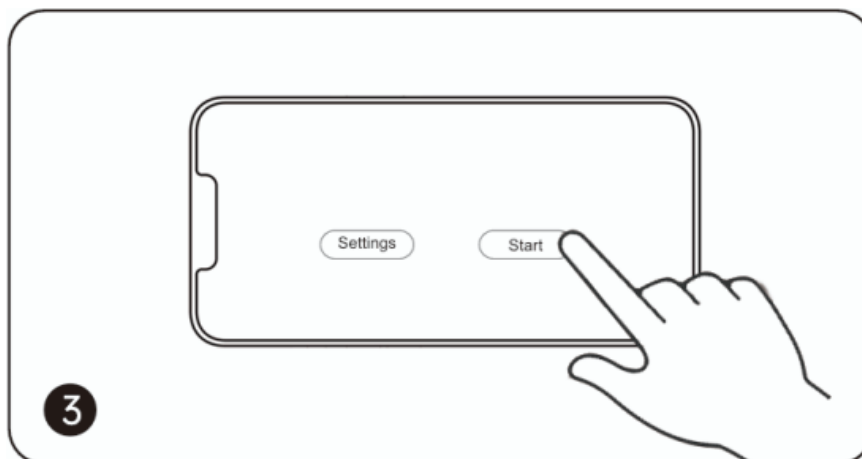
5 CALIBRATE THE GYRO



💡 Press the “One button calibration” button When the lights of drone are on and then start flashing and keep on again, the calibration is complete. the drone must be placed

on a horizontal surface in a steady state when the calibration is conducted.

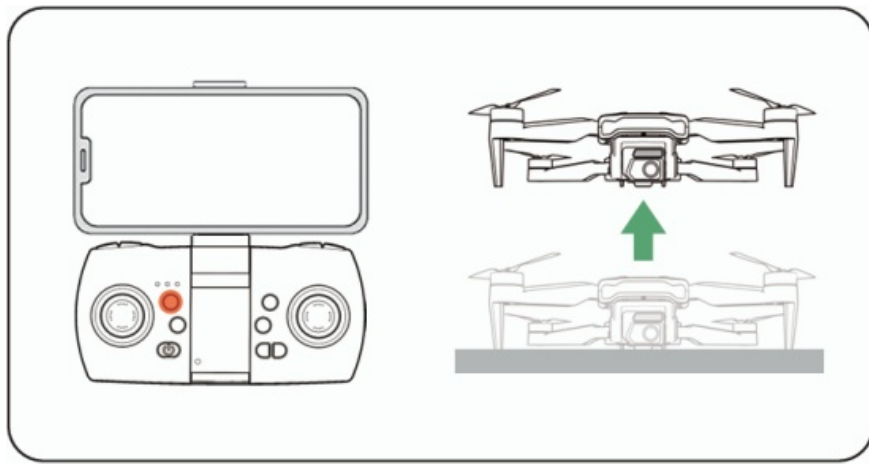
6 CONNECT TO WIFI



7 TAKE-OFF

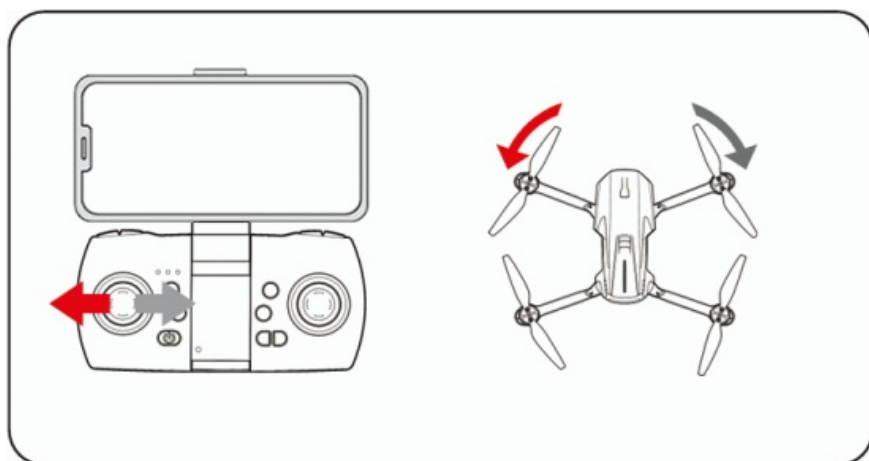
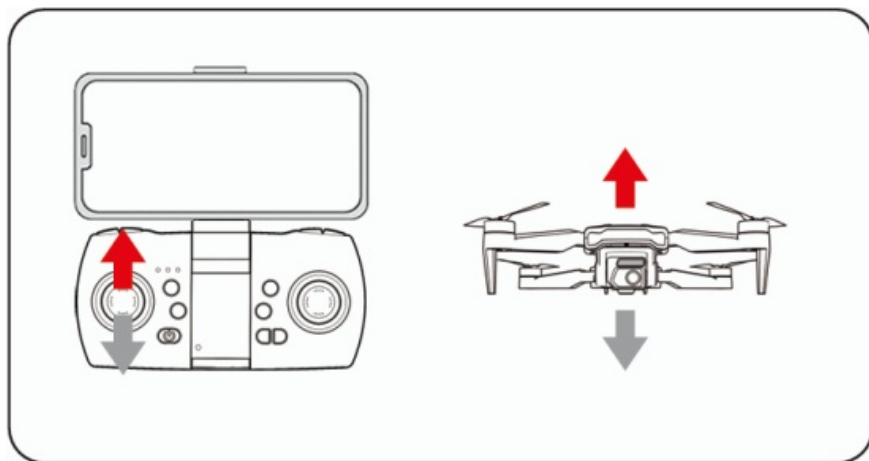


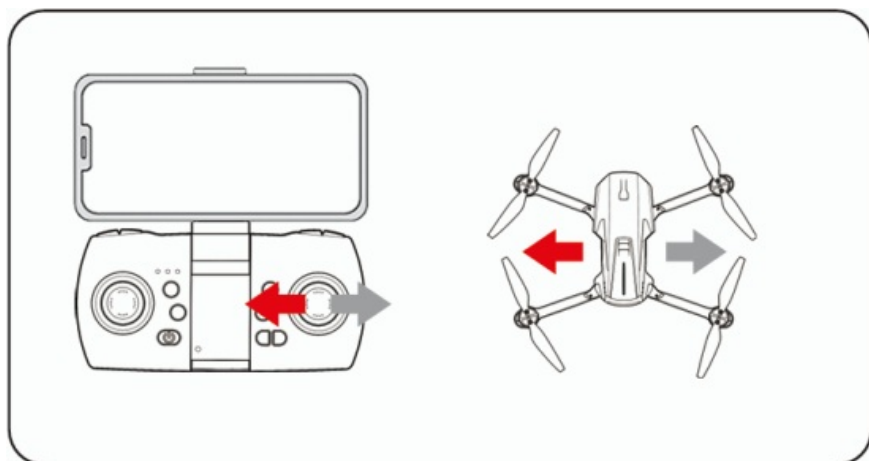
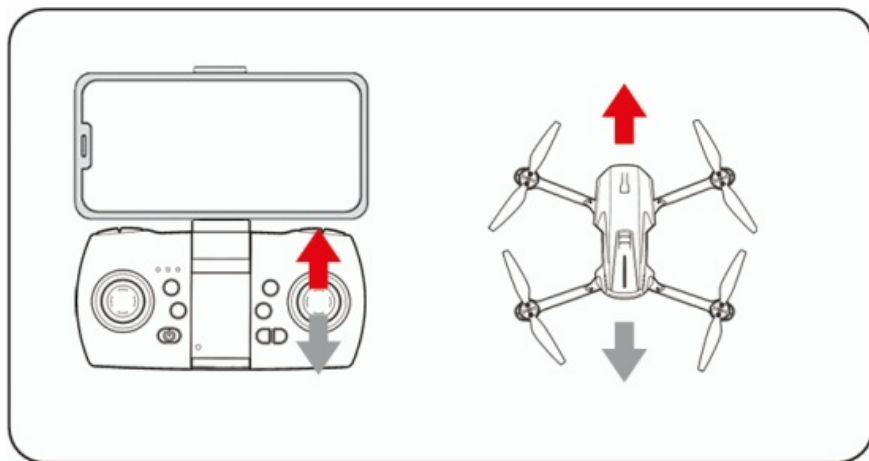
Please fly the drone in an open outdoor area free of surrounding obstructions.



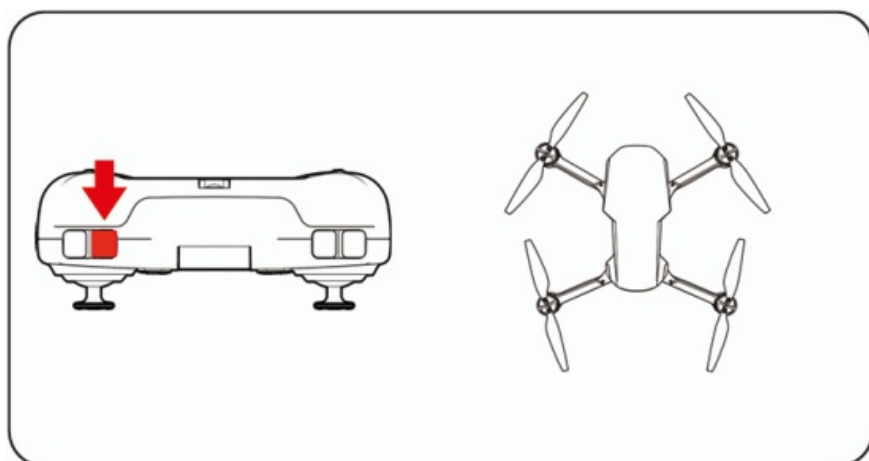
8 FLIGHT DIRECTION CONTROL

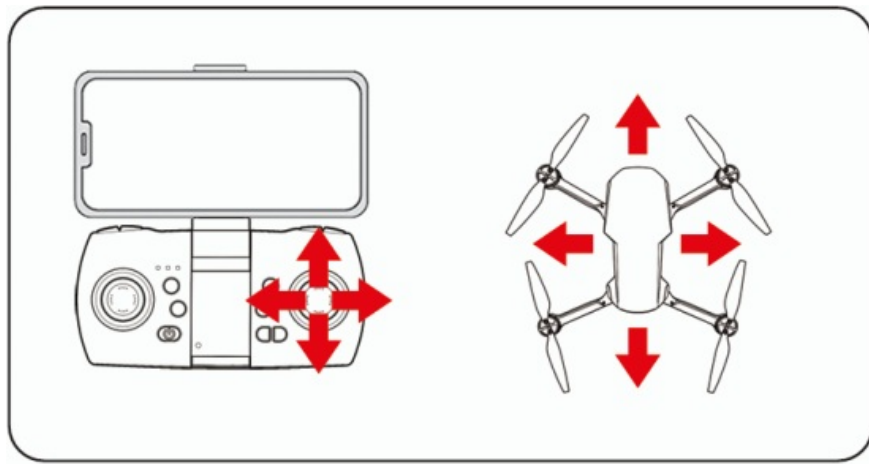
💡 The left joystick controls the drone's altitude and orientation during flight, while the right Joystick manages its forward, backward, and lateral movements.





9
HEADLESS MODE

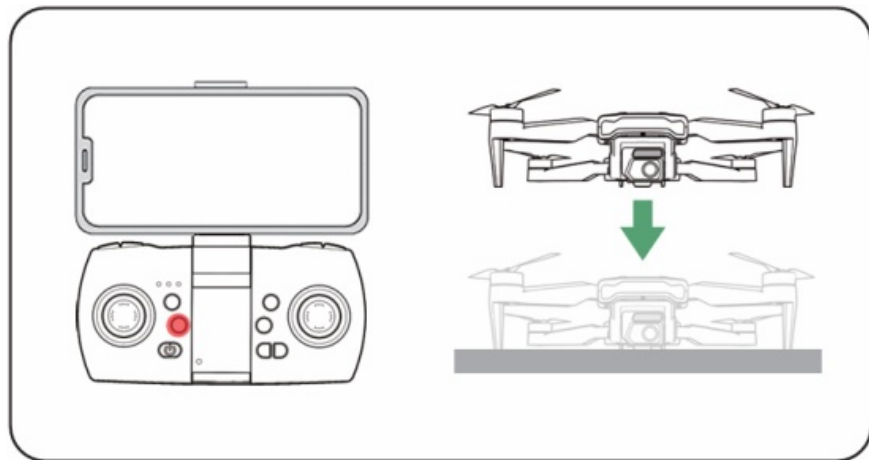




In the headless state, operator doesn't need to identify the direction of nose, but control the drone according to the operating lever of remote control.

When the drone flies far away and it's difficult to determine its orientation, it is advisable to activate headless mode to bring the drone back.

10 LANDING



CHUBORY[®]

Documents / Resources



[CHUBORY A68 Super Enduring Brushless Motor Drone \[pdf\]](#) User Guide
A68 Super Enduring Brushless Motor Drone, A68, Super Enduring Brushless Motor Drone, Enduring Brushless Motor Drone, Brushless Motor Drone, Motor Drone

References

- [User Manual](#)

■ CHUBORY

◆ A68, A68 Super Enduring Brushless Motor Drone, Brushless Motor Drone, CHUBORY, Enduring Brushless Motor Drone, Motor Drone, Super Enduring Brushless Motor Drone

Leave a comment

Your email address will not be published. Required fields are marked *

Comment *

Name

Email

Website

☐ Save my name, email, and website in this browser for the next time I comment.

[Post Comment](#)

Search:

[Search](#)

[Manuals+](#) | [Upload](#) | [Deep Search](#) | [Privacy Policy](#) | [@manuals.plus](#) | [YouTube](#)

This website is an independent publication and is neither affiliated with nor endorsed by any of the trademark owners. The "Bluetooth®" word mark and logos are registered trademarks owned by Bluetooth SIG, Inc. The "Wi-Fi®" word mark and logos are registered trademarks owned by the Wi-Fi Alliance. Any use of these marks on this website does not imply any affiliation with or endorsement.