

CHUANGO DWC-55 Roller Shutter Door Sensor User Manual

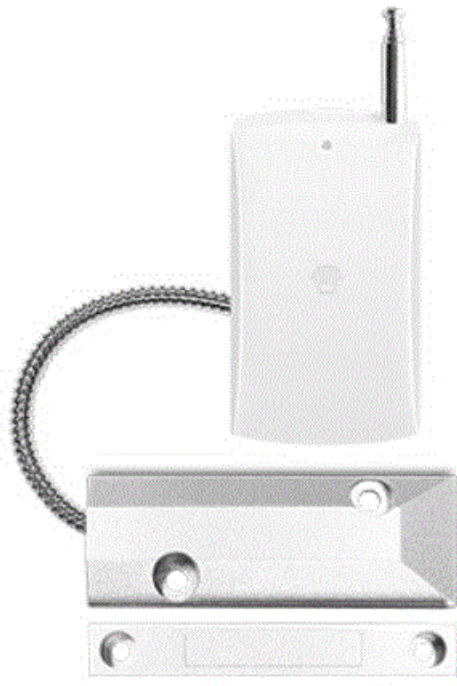
[Home](#) » [CHUANGO](#) » CHUANGO DWC-55 Roller Shutter Door Sensor User Manual 

Contents

- [1 CHUANGO DWC-55 Roller Shutter Door Sensor](#)
- [2 Introduction](#)
- [3 Product Overview](#)
 - [3.1 LED Indication](#)
 - [3.2 Pair with Control Panel](#)
 - [3.3 Installation](#)
- [4 Specifications](#)
- [5 Documents / Resources](#)
- [6 Related Posts](#)

CHUANGO®

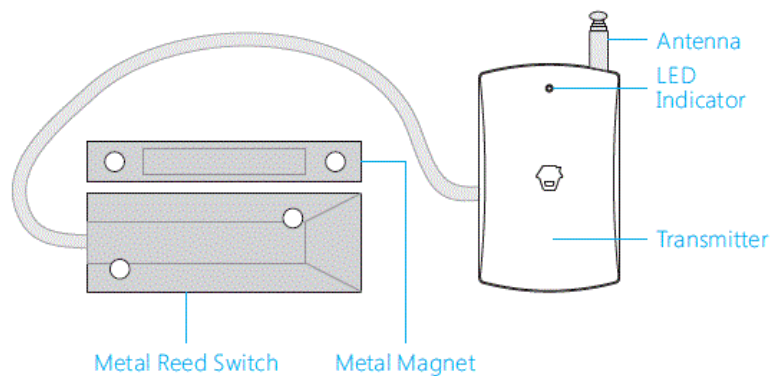
CHUANGO DWC-55 Roller Shutter Door Sensor



Introduction

The DWC-55 Roller Shutter Door Sensor is used for rolling gates. When the Metal Magnet and the Metal Reed Switch are separated more than 2cm, it will transmit wireless alert signal to the connected control panel immediately. The lifespan of the battery depends on the frequency of opening and closing the door/gate, the normal battery's service life is about 12 to 15 months.

Product Overview



LED Indication

Flashes once: Door opening is detected.

Low power indication; Flashes once every 3 seconds: please change the batteries as soon as possible.

Pair with Control Panel

1. Make sure the control panel enters Pairing Accessory State (Please refer to the details in the control panel's user manual)
2. Separate the Metal Magnet and the Metal Reed Switch for more than 2cm. The control panel beeps once to indicate a successful pairing.

Installation



Important:

Please test the sensor to make sure the connected control panel can receive the transmitting signal of the sensor before fixing it in place.

Install the sensor inside the house.

Steps:

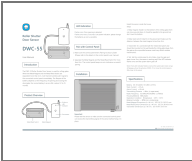
1. **Metal magnet:** Install it on the bottom of the rolling gate which can move up and down, it should be parallel to the ground but don't over the bottom.
2. **Metal reed switch:** Install it on the ground and make sure the distance between the metal magnet is less than 2cm.
3. **Transmitter:** It is connected with the metal reed switch and should be mounted on the wall beside the rolling gate (Away from the gate as far as possible because metal may disturb wireless transmission).
4. **Test:** Set the control panel to Arm State, close the gate and open it over 2cm, the sensor is working well if the LED indicator flashes once and the system alarm goes off.

Note: If only LED indicator flashes once but the system alarm does not go off, please pull out the antenna of DWC-55 or move the control panel a little closer to the sensor.

Specifications

- **Battery** DC 3V (AAA 1.5V LR03 x 2 PCS)
- **Static Current** < 23 au
- **Alarm Current** < 40 mA
- **Transmitting Distance** < 80m (in open area)
- **Radio Frequency** 315 MHz/433.92MHz (± 75 KHz)
- **Housing Material** ABS plastic
- **Operation Condition Temperature** -10°C~+55°C
- **Relative Humidity** < 80% (non-condensing)
- **Metal Magnet Dimensions** (L x W x H) 105.5 X 15.5 X 15.5 mm
- **Metal Reed Switch Dimensions** (L x W x H) 105.5 X 38 X 9.6 mm
- **Transmitter Dimensions** (L x W x H) 107 X 54 X 14.5 mm

Documents / Resources

	<p>CHUANGO DWC-55 Roller Shutter Door Sensor [pdf] User Manual DWC-55, Roller Shutter Door Sensor, Shutter Door Sensor, Door Sensor, DWC-55, Sensor</p>
---	---

Manuals+.com