

Contents [[hide](#)]

- [1 CHROMATEQ ProDMX 2 LED Lighting Control Software](#)
- [2 Specifications](#)
- [3 Product Usage Instructions](#)
- [4 FAQs](#)
- [5 Documents / Resources](#)
 - [5.1 References](#)



CHROMATEQ ProDMX 2 LED Lighting Control Software



Introduction

- The CHROMATEQ ProDMX 2 is a professional LED lighting control software designed to provide precise and flexible control over DMX-compatible fixtures. Built for lighting

designers, technicians, and event professionals, ProDMX 2 offers an intuitive interface with advanced programming tools to create dynamic lighting effects for stage productions, concerts, clubs, architectural installations, and live events.

- It supports real-time control, scene building, timeline programming, and visual effects with smooth performance. The software is compatible with a wide range of CHROMATEQ DMX interfaces and is engineered to handle both small-scale and large-scale lighting installations. With user-friendly operation and powerful customization options, ProDMX 2 delivers a reliable solution for professional lighting management.

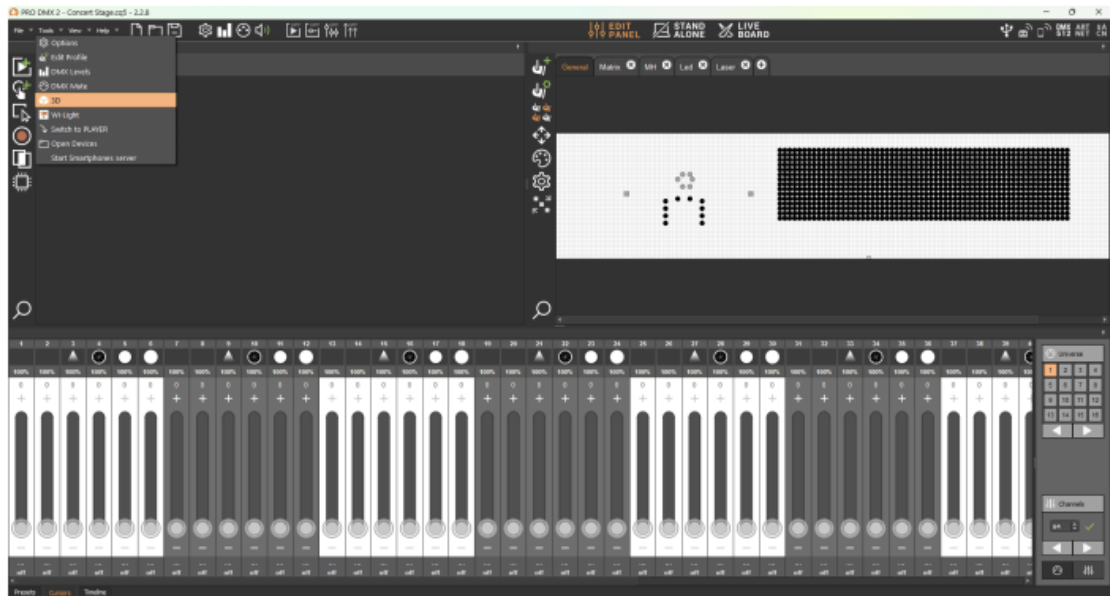
Specifications

- Product Name: Studio DMX
- Control Interface: Art-Net and sACN
- Compatibility: ProDMX 2

Product Usage Instructions

Control Studio DMX via Art-Net or sACN input

- To control Studio DMX, you have to create a ProDMX 2 patch with all the fixtures you want to see in the 3D.
- Refer to Pro DMX 2 manuals.
- Then start Studio DMX to create the 3D show :
 - -> Click on “Tools” and “3D”



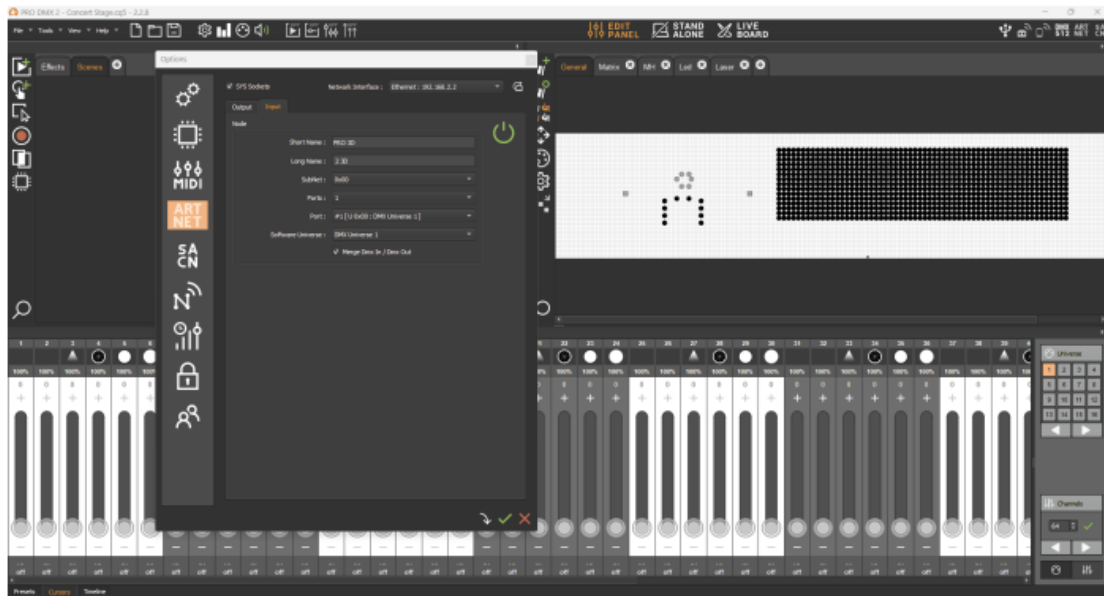
Refer to the Studio DMX manual to create the show.



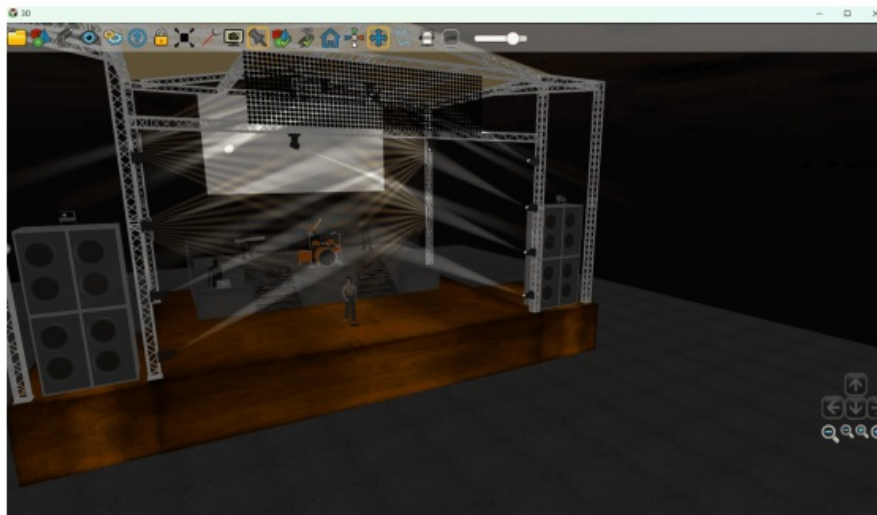
By Art-Net

Once the show is created, set Pro DMX 2 Art-Net input settings :

- Click to “Tools” -> “Options”-> ARTNET
- Select the network card corresponding to your Art-Net installation -> Activate the “Merge DMX In / DMX Out” option.
- Activate Art-net Input



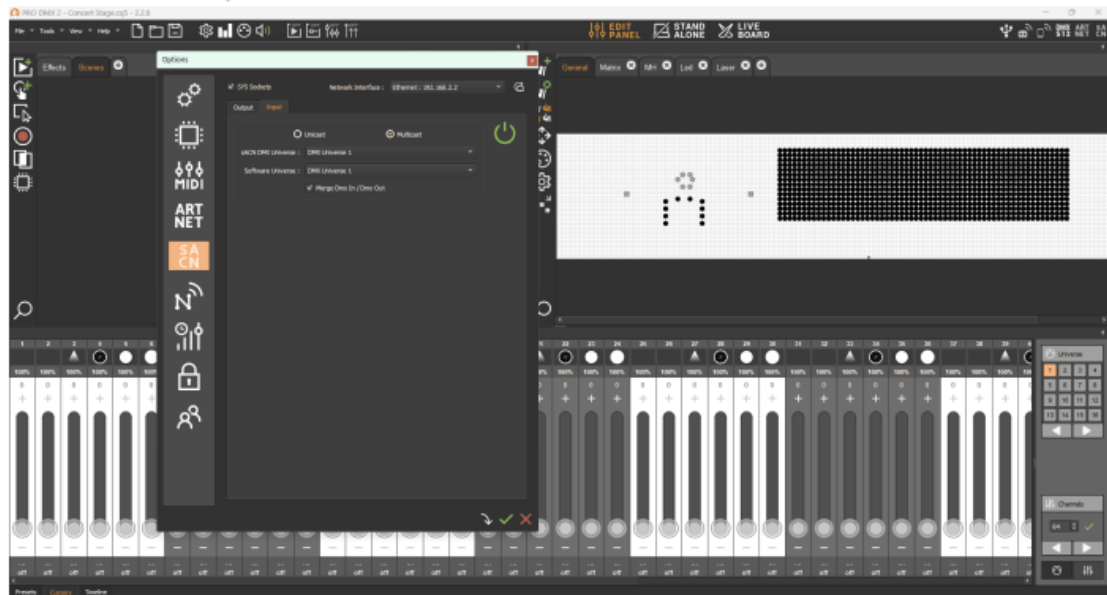
Now you can send Art-Net from your external source and see the result in Studio DMX.



By sACN

Once the show is created, set Pro DMX 2 Art-Net input settings :

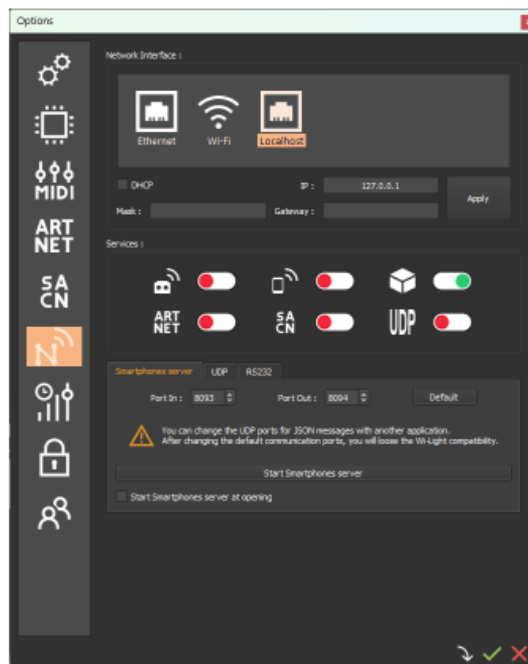
- Click to “Tools” -> “Options”-> sACN
- Select the network card corresponding to your Art-Net installation -> Select “Unicast” or “Multicast”
- Activate the “MerDMXDmx In / DMX Out” option
- Activate sACN Input



Now you can send sACN from your external source and see the result in Studio DMX.

Troubleshooting

- If you don't see your fixtures patched in Pro DMX 2 in Studio DM, check the Network part in Options :
- Click to "Tools" -> "Options"-> Network
- Select the "Localhost" network card and activate the cube icon (Studio DMX)



If an Art-Net or sACN signal is not received in ProDMX 2, check the firewall settings to allow the corresponding UDP ports :

- Art-Net: port 6454
- sACN: port 5568

Safety Instructions – CHROMATEQ ProDMX 2

1. Official Installation Only

- Download the software exclusively from the official CHROMATEQ website or trusted distributors to avoid corrupted or unsafe versions.
- Verify that your computer meets the minimum system requirements before installation.

2. Electrical & Hardware Safety

- Use the ProDMX 2 software only with compatible DMX interfaces and lighting equipment.
- Always ensure the power to connected fixtures is properly rated and stable.
- Connect and disconnect DMX cables only when devices are powered off to avoid short circuits or equipment damage.

3. Data & Software Security

- Regularly update the software to the latest version to ensure optimal performance and protection against bugs.
- Backup your show files and configurations to prevent data loss.

4. Operational Safety

- Test all programmed lighting effects before live use to prevent sudden light flashes, strobing, or unsafe intensity changes.
- Avoid using lighting sequences that may trigger photosensitive epilepsy (e.g., rapid strobe effects) without proper audience warning.
- Ensure fixtures are securely mounted and positioned before running automated programs.

5. User Responsibility

- The operator must be familiar with DMX protocol, lighting safety, and venue regulations.
- Only authorized personnel should have access to the show files and system control.

6. Environment

- Operate the software in a safe, dry environment with adequate ventilation for

connected devices.

- Do not run the control system on unstable or virus-infected computers.

FAQs


Q: What should I do if I encounter issues with patching fixtures in Studio DMX?

A: Check the Network part in Options under Tools to select the correct network card and activate the cube icon for Studio DMX.

Q: How can I resolve problems with Art-Net or sACN signal reception in ProDMX 2?

A: Ensure that your firewall settings allow the corresponding UDP ports - for Art-Net, use port 6454, and for sACN, use port 5568.

Documents / Resources

	<p>CHROMATEQ ProDMX 2 LED Lighting Control Software [pdf] User Guide</p> <p>ProDMX 2 LED Lighting Control Software, LED Lighting Control Software, Lighting Control Software, Software</p>
---	--

References

- [User Manual](#)

CHROMATEQ

CHROMATEQ, LED Lighting Control Software, Lighting Control Software, ProDMX 2 LED Lighting Control Software, Software

Leave a comment

Your email address will not be published. Required fields are marked *

Comment *

Name

Email

Website

☐ Save my name, email, and website in this browser for the next time I comment.

Post Comment

Search:

e.g. whirlpool wrf535swhz

Search

Manuals+ | Upload | Deep Search | Privacy Policy | @manuals.plus | YouTube

This website is an independent publication and is neither affiliated with nor endorsed by any of the trademark owners. The "Bluetooth®" word mark and logos are registered trademarks owned by Bluetooth SIG, Inc. The "Wi-Fi®" word mark and logos are registered trademarks owned by the Wi-Fi Alliance. Any use of these marks on this website does not imply any affiliation with or endorsement.