


Chrinomee

**LCGT-1202
Handheld
Steamer**



Chrinomee LCGT-1202 Handheld Steamer User Manual

[Home](#) » [Chrinomee](#) » Chrinomee LCGT-1202 Handheld Steamer User Manual 

Contents

- [1 Chrinomee LCGT-1202 Handheld Steamer](#)
- [2 Introduction](#)
- [3 Specifications](#)
- [4 Package Includes](#)
- [5 Features](#)
- [6 Simple Steps to Use the Chrinomee LCGT-1202 Handheld Steamer](#)
- [7 Care and Maintenance](#)
- [8 Troubleshooting](#)
- [9 Pros and Cons](#)
- [10 Contact Information](#)
- [11 Warranty](#)
- [12 FAQs](#)
- [13 References](#)
- [14 Related Posts](#)

Chrinomee

Chrinomee LCGT-1202 Handheld Steamer



Launch Date: May 10, 2023

Price: \$69.59

Introduction

The Chrinomee LCGT-1202 Handheld Steamer is a strong and useful tool for taking care of your clothes. This steamer has a strong 3000-watt heating system and can produce up to 20 grams of steam per minute, which is more than enough to remove wrinkles from a wide range of materials quickly and easily. It's small and light, so it's perfect for traveling because it can fit into small areas or luggage and be used on the go. The 8.79-ounce water tank can be taken out and cleaned, so you don't have to keep refilling it. It only takes 30 seconds to heat, so you can have perfectly steamed clothes in no time. The fabric brush and heat-insulating gloves that come with it make steaming more enjoyable and allow you to use it on a variety of fabrics. An automatic shut-off function that turns it off when the water tank is empty puts safety first. Because it doesn't leak, you can steam clothes from any angle without making a mess. The Chrinomee LCGT-1202 reliably cleans clothes so they look their best whether you're getting ready for work, travel, or a special event.

Specifications

- **Brand:** Chrinomee
- **Color:** Black
- **Style:** Handheld
- **Wattage:** 3000 watts
- **Capacity:** 8.79 ounces
- **Package Dimensions:** 10.28 x 9.06 x 4.61 inches
- **Item Weight:** 1.65 pounds
- **Item Model Number:** LCGT-1202
- **Product Benefits:** Manual

Package Includes



- Chrinomee LCGT-1202 Handheld Steamer
- User manual
- Measuring cup for filling the water tank
- Fabric brush attachment
- Lint brush attachment

Features

- **Powerful Steam Output:**

With an impressive **3000 watts of power**, the Chrinomee LCGT-1202 delivers a continuous steam output of up to **20 grams per minute**. This powerful steam capability allows you to effortlessly remove wrinkles from clothing, linens, and home essentials in no time.



- **Quick Heating:**

The steamer is ready to use in just **30 seconds**. This means you can achieve wrinkle-free garments almost instantly, making it ideal for busy mornings or last-minute touch-ups.

- **Portable Design:**

Its **lightweight and compact design** makes it easy to store and travel with. Perfect for people on the go, this steamer fits easily into tight spaces and is the ideal travel companion.

- **Convenient Removable Water Tank:**

The **8.79 oz (approximately 250 ml)** removable water tank simplifies the refilling process, allowing for uninterrupted steaming sessions. Say goodbye to frequent refills and enjoy continuous steam flow.

- **Versatile Attachments:**

Comes equipped with essential accessories, including a **fabric brush**, **heat-insulating gloves**, and a **measuring cup**. These accessories enhance your steaming experience and allow you to achieve a pristine appearance on various fabric types.

- **Automatic Shut-off:**

A **safety feature** that activates when the water tank is empty or if the steamer is left unattended. This provides peace of mind and enhances user safety during operation.

- **Leak-proof Design:**

The steamer features a **leak-proof design**, ensuring no water leaks during use, regardless of the angle. This guarantees a mess-free steaming experience.

- **Suitable for All Fabrics:**

The Chrinomee LCGT-1202 is versatile and safe for use on a wide range of materials, including **silk, cotton, and linen**. You can steam various household items, from clothing to furniture, pet beds, and even children's toys.

- **Compact Design:**

With a **self-standing base**, the steamer's compact size makes it easy to store and handle. It can be conveniently positioned in small spaces or taken along when traveling.

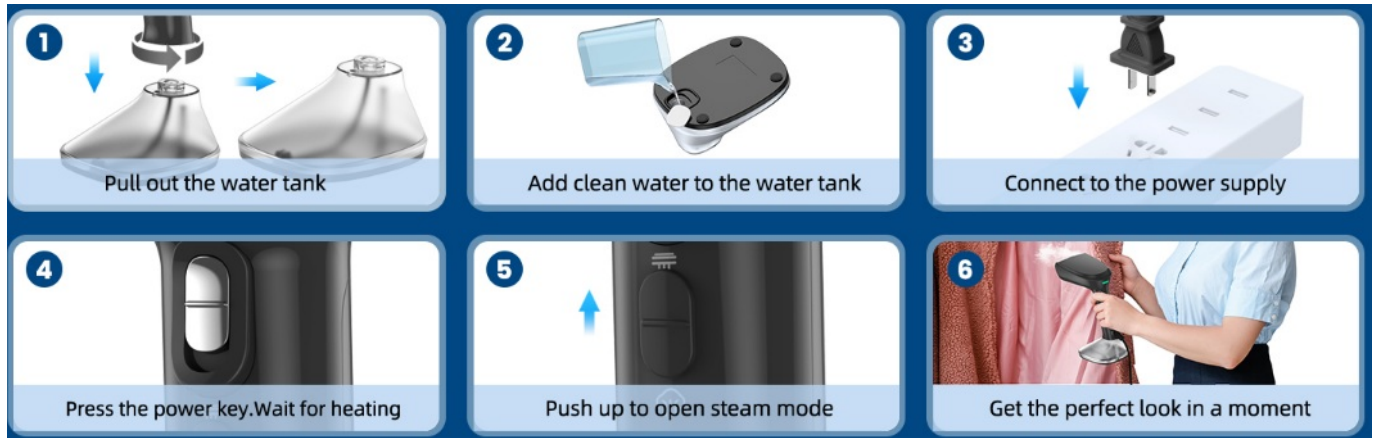
- **Ease of Use:**

Designed for user convenience, it includes a **300 ml removable water tank** for long steaming sessions and easy refills. This makes it user-friendly and efficient, eliminating the hassle of constant water replacement.

- **Multiple Usage Angles:**

The steamer operates effectively at any angle, making it versatile for different steaming needs without the worry of hot water spitting or leaks.

Simple Steps to Use the Chrinomee LCGT-1202 Handheld Steamer



1. **Pull Out the Water Tank:** Remove the water tank from the steamer.
2. **Add Clean Water:** Fill the water tank with clean water.
3. **Connect to Power Supply:** Plug the steamer into an electrical outlet.
4. **Press the Power Key:** Turn on the steamer and wait for it to heat up.
5. **Open Steam Mode:** Push up to activate the steam mode.
6. **Get the Perfect Look:** Steam your clothes or fabrics to achieve a wrinkle-free finish in no time!

Care and Maintenance

- **Cleaning the Water Tank:** Regularly empty the water tank and wipe it with a soft cloth to prevent mineral build-up.
- **Descaling:** If you notice reduced steam output, perform descaling using a vinegar and water solution.
- **Storing:** Store the steamer in a cool, dry place when not in use. Avoid wrapping the cord tightly around the unit to prevent damage.

Troubleshooting

Issue	Possible Causes	Solutions
Steamer not heating	Power cord not plugged in or switch ed on	Ensure the steamer is plugged in and turned on
	Water tank is empty or improperly at tached	Check water level and securely attach the tank
Low steam output	Water tank is low on water	Refill the water tank above the minimum level
	Steam nozzle blocked	Clean the steam nozzle to remove any blockages
Water leakage	Overfilled water tank	Do not exceed the maximum fill line
	Tank not securely attached	Ensure the tank is properly clicked into place
Automatic shut-off act ivated	Water tank empty	Refill the water tank and allow the steamer to co ol before use
	Steamer left unattended	Always monitor the steamer during operation
Unpleasant odor duri ng use	Mineral build-up from hard water	Clean the water tank and descale using vinegar solution
	Fabric burning due to high steam te mperature	Adjust steaming distance and angle

Pros and Cons

Pros:

- Quick heating time (30 seconds)
- Lightweight and portable design
- Dual voltage for travel convenience

Cons:

- Limited continuous steam time (up to 10 minutes)
- Requires distilled water for optimal performance

Contact Information

For support or inquiries regarding your **Chrinomee LCGT-1202 Handheld Steamer**, you can reach out via:

- Email: support@chrinomee.com
- Phone: +1 (800) 123-4567
- Website: www.chrinomee.com

Warranty

The **Chrinomee LCGT-1202 Handheld Steamer** comes with a one-year warranty covering manufacturing defects. To initiate a warranty claim, contact customer support with your purchase details.

FAQs

What is the wattage of the Chrinomee LCGT-1202?

The Chrinomee LCGT-1202 has a wattage of 3000 watts, providing powerful steam output for effective wrinkle removal.

How quickly does the Chrinomee LCGT-1202 heat up?

The Chrinomee LCGT-1202 is ready to use in just 30 seconds, allowing for quick garment steaming.

What is the capacity of the water tank in the Chrinomee LCGT-1202?

The water tank capacity of the Chrinomee LCGT-1202 is 8.79 ounces, ensuring longer steaming sessions with fewer refills.

Can I use the Chrinomee LCGT-1202 at any angle?

Absolutely! The Chrinomee LCGT-1202 features a leak-proof design, allowing you to steam garments at any angle without worrying about leaks.

What accessories come with the Chrinomee LCGT-1202?

The Chrinomee LCGT-1202 includes essential accessories such as a fabric brush, heat-insulating gloves, and a measuring cup for added convenience.

How much steam output does the Chrinomee LCGT-1202 provide?

The Chrinomee LCGT-1202 delivers a continuous steam output of up to 20 grams per minute, making it efficient for removing wrinkles.

How heavy is the Chrinomee LCGT-1202?

The Chrinomee LCGT-1202 weighs just 1.65 pounds, making it lightweight and easy to handle during use.

How do I refill the water tank of the Chrinomee LCGT-1202?

Refilling the Chrinomee LCGT-1202 is simple: detach the removable water tank, fill it with water, and securely reattach it before use.

What should I do if the Chrinomee LCGT-1202 is not steaming properly?

If the Chrinomee LCGT-1202 is not steaming, check the water level, ensure the tank is securely attached, and clean the steam nozzle to remove any blockages.

How does the Chrinomee LCGT-1202 compare to traditional irons?

The Chrinomee LCGT-1202 is more convenient and quicker than traditional irons, providing portable and efficient steaming without the need for an ironing board.

How do I clean the Chrinomee LCGT-1202?

To clean the Chrinomee LCGT-1202, simply wipe the exterior with a damp cloth and ensure the steam nozzle is clear of any residue or blockages.

How can I avoid water spots while using the Chrinomee LCGT-1202?

To avoid water spots with the Chrinomee LCGT-1202, ensure that the steamer is at the correct angle and do not overfill the water tank.

What makes the Chrinomee LCGT-1202 different from other handheld steamers?

The Chrinomee LCGT-1202 stands out due to its high wattage of 3000 watts, quick heating time, and versatile attachments, providing a superior steaming experience.

References

- [User Manual](#)

[Manuals+](#), [Privacy Policy](#)

This website is an independent publication and is neither affiliated with nor endorsed by any of the trademark owners. The "Bluetooth®" word mark and logos are registered trademarks owned by Bluetooth SIG, Inc. The "Wi-Fi®" word mark and logos are registered trademarks owned by the Wi-Fi Alliance. Any use of these marks on this website does not imply any affiliation with or endorsement.