

CHOKMAX

AUB07TJ7KF6Q
CORDLESS
ROTARY
TOOL



CHOKMAX AUB07TJ7KF6Q Cordless Rotary Tool Operating Instructions

[Home](#) » [CHOKMAX](#) » CHOKMAX AUB07TJ7KF6Q Cordless Rotary Tool Operating Instructions 

Contents

- [1 CHOKMAX AUB07TJ7KF6Q Cordless Rotary Tool](#)
- [2 INTRODUCTION](#)
- [3 SPECIFICATIONS](#)
- [4 WHAT'S IN THE BOX](#)
- [5 PRODUCT OVERVIEW](#)
- [6 FEATURES](#)
- [7 SETUP GUIDE](#)
- [8 CARE & MAINTENANCE](#)
- [9 TROUBLESHOOTING](#)
- [10 PROS & CONS](#)
- [11 WARRANTY](#)
- [12 FREQUENTLY ASKED QUESTIONS](#)
- [13 References](#)
- [14 Related Posts](#)

CHOKMAX

CHOKMAX AUB07TJ7KF6Q Cordless Rotary Tool



INTRODUCTION

This is the CHOKMAX AUB07TJ7KF6Q Cordless Rotary Tool. It is a flexible and light tool that makes engraving, cutting, and polishing easy. It's great for both pros and amateurs because it can go as fast as 15,000 RPM and can be set to different speeds starting at 5,000 RPM. This small and quiet rotary tool comes with a portable lithium-ion battery that makes it possible to use it without a cord. It's a great deal at only **\$16.99**, especially considering how strong it is. The rotary tool, which is made by CHOKMAX, a well-known brand of precision tools, is great for do-it-yourself projects and small jobs that need to be done with care and accuracy. This tool was just released to meet a variety of needs, and its ergonomic form makes it easy to hold for long periods. The CHOKMAX cordless rotary tool always does a great job, whether you're polishing fine jewelry or cutting out complicated designs.

SPECIFICATIONS

Brand Name	CHOKMAX
Maximum Rotational Speed	15,000 RPM
Minimum Rotational Speed	5,000 RPM
Special Features	Lightweight, Variable Speed, Quiet, Cordless, Compact
Number of Batteries	1 Lithium Ion battery (included)
Power Source	Cordless-electric
Recommended Uses	Engraving, Carving, Polishing
Voltage	3.7 Volts
Price	\$16.99

WHAT'S IN THE BOX

- Cordless Rotary Tool
- Operating Instructions



40PCS ACCESSPRIES



USB Cable *1



Package box *1



Sanding drums *1



Sharp diamond grinding burrs *3



Aluminium oxide grinding burrs *4



Bits *4



Felt burrs *1



Collets *5



Sanding bands *20

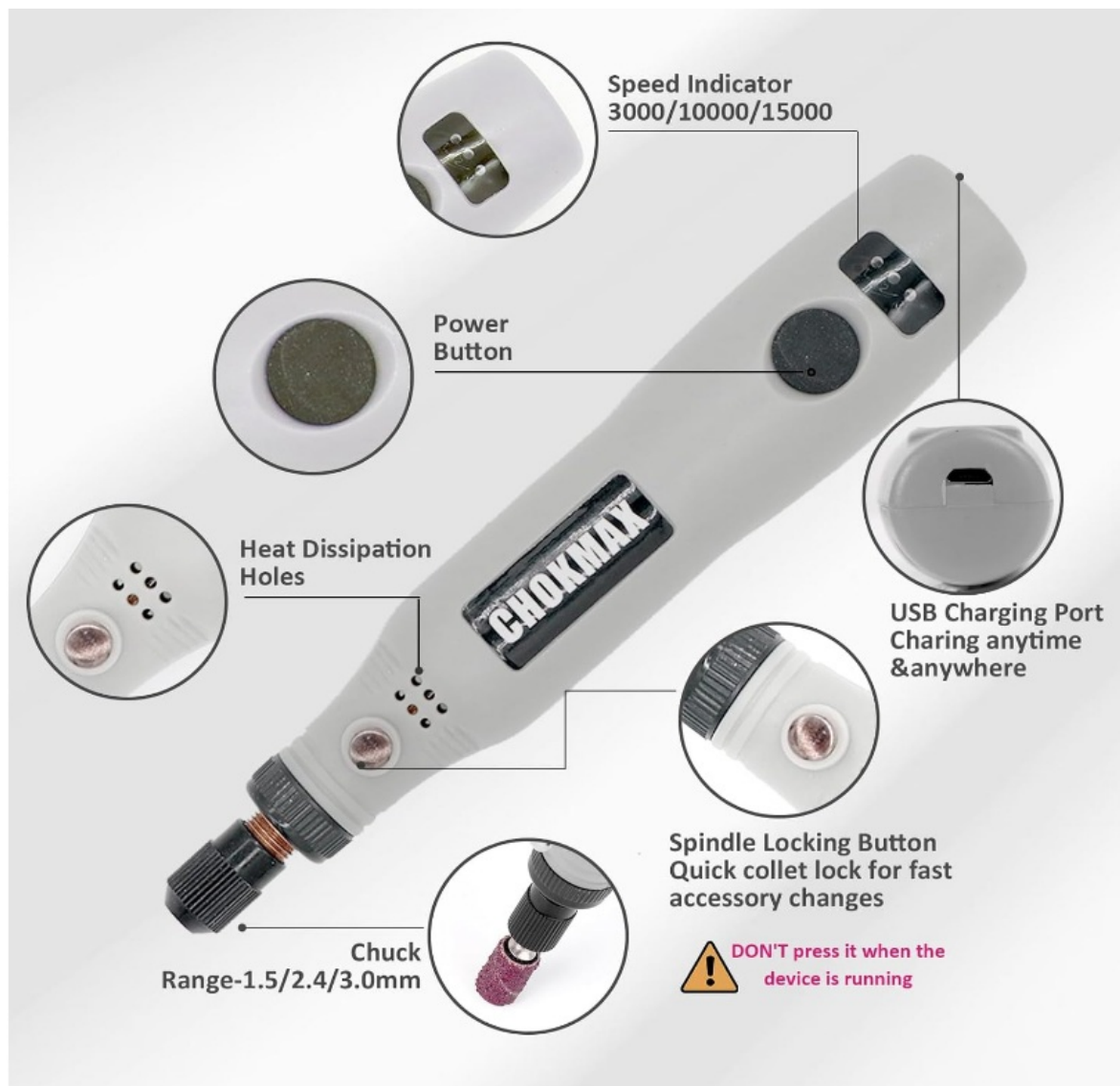


Felt polishing wheels *2



Grinding wheels *1

PRODUCT OVERVIEW



FEATURES

- **Adjustable Speeds:** It has three-speed sets (5000 RPM, 10,000 RPM, and 15000 RPM) so you can use it for a variety of DIY projects while still being precise and in control.
- **Lightweight Design:** The cloud's lightweight design makes it easier on the hands and allows for long hours of comfortable use.
- The 42-Piece Accessory Kit has a variety of tools for cleaning, polishing, engraving, cutting, sanding, and grinding.
- The cordless feature is powered by a 3.7V rechargeable lithium-ion battery, which gets rid of the bother of cords.
- Small and portable, this build is great for difficult do-it-yourself projects or places with limited room.

COMPACT & PORTABLE

Light and Small
82.9g



USB Charging
Quick and Convenient



150mm/5.9inch



- **Quiet Operation:** The improved motor design makes it very quiet, so you can use it inside without bothering other people.
- **Battery Life:** It can be used continuously for up to 90 minutes after being charged for two hours.
- **USB Charging:** USB charging is convenient and works with a wide range of charge ports and devices.
- **Variable Speed Control:** For precise making, you can change the speed based on the type of material.
- **Durable Motor:** The motor has been upgraded to give it more power to handle a wider range of DIY materials.
- **Multiple Uses:** It can be used to make resin crafts, customize gifts, and do small fixes around the house.

Multi-Purpose

Ideal for Light-duty Project



Drilling



Cutting



Sanding



Carving



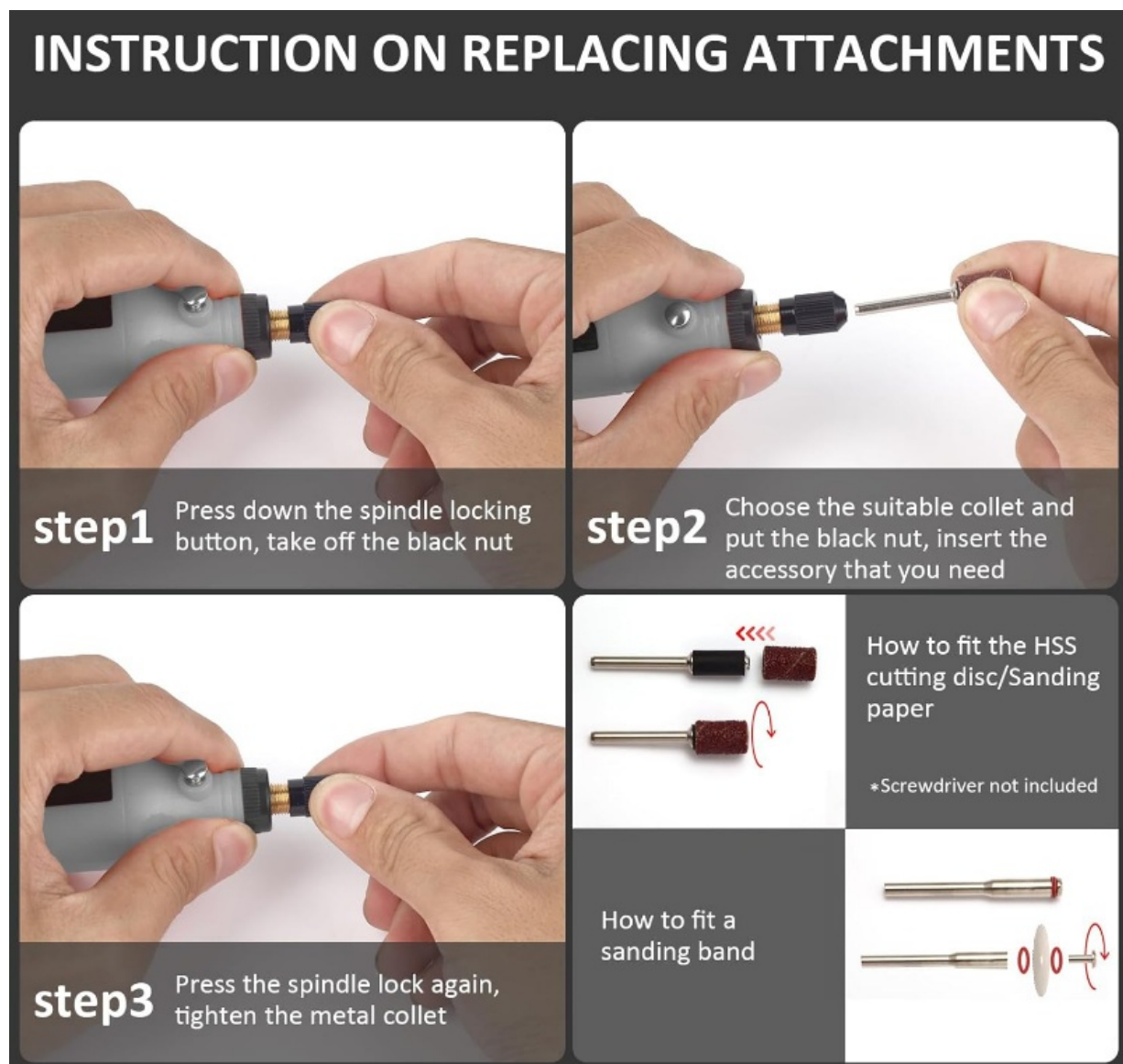
Polishing

- **Ergonomic Grip:** Made to fit easily in your hand so you can control and steady it better.
- **Battery Included:** It comes with a lithium-ion battery that can be charged and is ready to use right out of the box.
- A multi-functional tool combines several functions into a single device, which cuts down on the need for multiple tools.
- **Easy on the wallet:** At \$16.99, it's a great deal for DIY fans and people who are just starting out.

SETUP GUIDE

- Carefully take the rotary tool and its extras out of the box and make sure that everything that comes with it is inside.
- **Charge the Battery:** Use the cord that came with the tool to connect it to a USB port and let it charge for two hours before you use it for the first time.
- **Pick out the Collet:** Pick a clamp that fits the thing you want to attach. If the part feels loose, you should get a new one.
- **Add the Accessory:** Put the item you want to use on the tool into the collet and tighten it down.
- Start the tool by pressing the power button.
- **Change the Speed:** For your job, use the speed control button to choose between 5000 and 15000 RPM.

- Before you use it, run the tool for a short time to make sure the attachment is securely in place.



- **Safety Gear:** To stay safe while working, wear safety glasses and gloves.
- **Set up the Workspace:** Make sure the work area is clean, stable, and well-lit.
- **Practice on Scrap Material:** To get better at using the tool, try it out on scrap material.
- **Use Light Pressure:** Let the tool do the work, and don't put too much force on the items.
- **Be Careful When Changing Accessories:** Turn off the tool and let the accessory stop moving before putting it back on.
- **Safeguard Your Materials:** To keep the things you're working on stable, use clamps or holders.
- **Watch the Battery Life:** Keep an eye on how it's working and charge it when it needs it to avoid interruptions.
- **Stored** After using the tool, put it and its parts away in a dry, safe place.

CARE & MAINTENANCE

- **Clean:** Run a soft, dry cloth over the tool to get rid of any dust or dirt.
- **Check items:** Before each use, check items for damage or wear. What needs to be replaced.
- **Charge your phone regularly:** Don't let the battery die fully for long periods of time.
- **Use Original Parts:** To keep performance high, only use accessories and collets that are suitable.

- **Moving Parts:** Light machine oil should be added to the collet nut every so often to keep it running smoothly.
- **Avoid Overloading:** To make the motor last longer, don't use the tool for heavy-duty tasks.
- **How to Store It:** Keep the tool somewhere cool and dry to keep it from getting damaged by water.
- **Protect the Battery:** Do not let the battery get too hot or too cold.
- **Check Speed Control:** Check the speed settings every so often to make sure they work right.
- To clean accessories, use a brush to get rid of any dust on tools that are used for grinding or polishing.
- **Avoid Water:** The tool is not waterproof, so don't put it in water.
- **Gentle Handling:** Don't drop the tool or use too much force on it.
- **Listen to the noise level.** More noise could mean there is a problem with the mechanics, so check it out right away.
- To keep accessories firmly in place, collets should be replaced when they become worn out.

TROUBLESHOOTING

Issue	Possible Cause	Solution
The tool does not turn on	Battery not charged	Charge the battery fully before use.
Reduced speed or power	Low battery	Recharge the battery.
Overheating during use	Prolonged operation	Allow the tool to cool before resuming.
Uneven performance	Dust or debris in the motor	Clean the tool with a soft, dry cloth.
Battery not charging	Faulty charger or port	Check connections or replace the charger .
Tool stops suddenly	Overload protection activated	Reduce workload and restart the tool.
Excessive vibration	Loose accessory attachment	Tighten the accessory properly.
Poor engraving or carving results	Incorrect speed setting	Adjust to the appropriate speed.
Noise levels higher than usual	Worn-out motor components	Contact customer service for repair.
Accessory slips off during use	Improper attachment	Secure the accessory tightly.
The tool won't maintain speed	Battery nearing depletion	Recharge or replace the battery.
Overheating charger	Charger in poorly ventilated area	Place the charger in a cool, open space.
The motor struggles to start	Internal motor issues	Contact support for assistance.
LED indicator not working	Battery connection issue	Recheck and reconnect the battery.
Limited runtime	Old or degraded battery	Replace the battery.

PROS & CONS

Pros:

1. Lightweight and compact, perfect for precision tasks.
2. Cordless operation with an included rechargeable battery.

3. Variable speed control for versatile applications.
4. Quiet operation suitable for indoor use.
5. Affordable price for high-quality features.

Cons:

1. Limited to small-scale tasks, not suitable for heavy-duty projects.
2. The battery may need frequent recharging during prolonged use.
3. Maximum speed is lower than some high-end rotary tools.
4. Accessories are sold separately.
5. Not ideal for professional-grade heavy-duty applications.

WARRANTY

The CHOKMAX AUB07TJ7KF6Q Cordless Rotary Tool comes with a **1-year limited warranty** that covers manufacturing defects and battery performance issues. Extended warranties may be available through select retailers.

FREQUENTLY ASKED QUESTIONS

What is the brand name of the CHOKMAX AUB07TJ7KF6Q Cordless Rotary Tool?

The CHOKMAX AUB07TJ7KF6Q Cordless Rotary Tool is manufactured by CHOKMAX, a reliable brand for precision tools.

What is the price of the CHOKMAX AUB07TJ7KF6Q Cordless Rotary Tool?

The CHOKMAX AUB07TJ7KF6Q Cordless Rotary Tool is priced at \$16.99, offering excellent value for its features.

What is the maximum rotational speed of the CHOKMAX AUB07TJ7KF6Q Cordless Rotary Tool?

The CHOKMAX AUB07TJ7KF6Q Cordless Rotary Tool can achieve a maximum speed of 15,000 RPM, ideal for detailed tasks.

What is the minimum speed of the CHOKMAX AUB07TJ7KF6Q Cordless Rotary Tool?

The CHOKMAX AUB07TJ7KF6Q Cordless Rotary Tool starts at a minimum speed of 5,000 RPM, allowing for precision work.

What power source does the CHOKMAX AUB07TJ7KF6Q Cordless Rotary Tool use?

The CHOKMAX AUB07TJ7KF6Q Cordless Rotary Tool is cordless-electric, powered by a rechargeable lithium-ion battery.

What type of battery is included with the CHOKMAX AUB07TJ7KF6Q Cordless Rotary Tool?

The CHOKMAX AUB07TJ7KF6Q Cordless Rotary Tool comes with 1 lithium-ion battery, which is included in the package.

What voltage does the CHOKMAX AUB07TJ7KF6Q Cordless Rotary Tool operate at?

The CHOKMAX AUB07TJ7KF6Q Cordless Rotary Tool operates on 3.7 volts, ensuring a balance of power and efficiency.

What are the recommended uses for the CHOKMAX AUB07TJ7KF6Q Cordless Rotary Tool?

The CHOKMAX AUB07TJ7KF6Q Cordless Rotary Tool is perfect for engraving, carving, and polishing, making it versatile for DIY and craft projects.

How many speeds does the CHOKMAX AUB07TJ7KF6Q Cordless Rotary Tool support?

The CHOKMAX AUB07TJ7KF6Q Cordless Rotary Tool supports multiple speed settings between 5,000 and 15,000 RPM.

Is the CHOKMAX AUB07TJ7KF6Q Cordless Rotary Tool cordless?

CHOKMAX AUB07TJ7KF6Q Cordless Rotary Tool is completely cordless, offering flexibility during operation.

How quiet is the CHOKMAX AUB07TJ7KF6Q Cordless Rotary Tool?

The CHOKMAX AUB07TJ7KF6Q Cordless Rotary Tool is designed to be quiet, ensuring comfortable use in noise-sensitive environments.

Why isn't my CHOKMAX AUB07TJ7KF6Q Cordless Rotary Tool turning on?

Ensure the battery is fully charged and correctly inserted. If the tool still doesn't turn on, check the power button for any damage or obstruction. If the issue persists, inspect the battery or charger for faults.

What should I do if the CHOKMAX AUB07TJ7KF6Q Cordless Rotary Tool is running slower than usual?

A low battery might reduce speed; recharge the battery fully. If the tool is still slow, ensure the attachment is properly installed and not obstructed. Excessive debris around the motor can also affect speed.

Why is my CHOKMAX AUB07TJ7KF6Q Cordless Rotary Tool overheating during use?

Overheating could be due to prolonged usage or applying too much pressure during operation. Allow the tool to cool down after extended periods and avoid pressing too hard on the material.

The CHOKMAX AUB07TJ7KF6Q Cordless Rotary Tool isn't charging. How can I fix this?

Check the charging cable and port for damage or debris. Ensure the power outlet is functioning. If the tool still doesn't charge, the battery or charger might need replacement.

References

- [User Manual](#)

[Manuals+](#). [Privacy Policy](#)

This website is an independent publication and is neither affiliated with nor endorsed by any of the trademark owners. The "Bluetooth®" word mark and logos are registered trademarks owned by Bluetooth SIG, Inc. The "Wi-Fi®" word mark and logos are registered trademarks owned by the Wi-Fi Alliance. Any use of these marks on this website does not imply any affiliation with or endorsement.