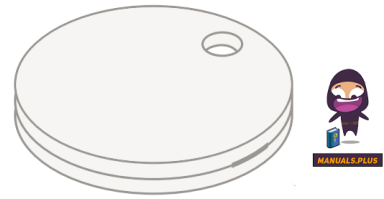


chipolo
chipolo POP
Key Finder



chipolo POP Key Finder User Manual

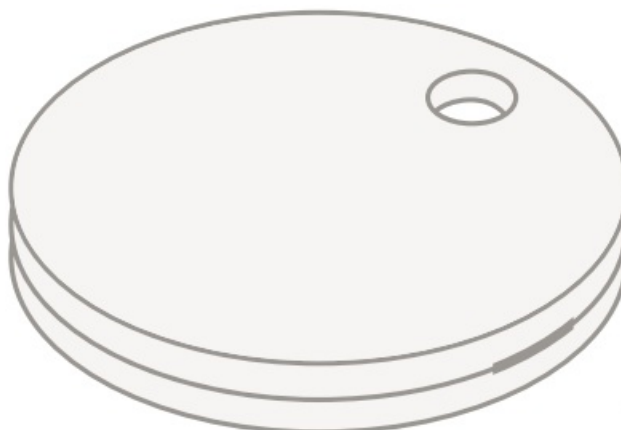
[Home](#) » [chipolo](#) » chipolo POP Key Finder User Manual 

Contents

- 1 [chipolo POP Key Finder](#)
- 2 [Product Specifications](#)
- 3 [Manual Setup](#)
- 4 [Battery](#)
- 5 [Fcc Compliance](#)
- 6 [CE AND UKCA – DECLARATION OF CONFORMITY](#)
- 7 [APPLE LEGAL NOTICE](#)
- 8 [WEEE DIRECTIVE & PRODUCT DISPOSAL](#)
- 9 [Frequently Asked Questions](#)
- 10 [Documents / Resources](#)
 - 10.1 [References](#)

chipolo

chipolo POP Key Finder



Product Specifications

- Model: Chipolo POP
- Battery Type: CR2032
- Battery Life: Up to 1 year

Get Started

For quick adding visit chipolo.net/POP

Manual Setup

Apple Find My app

1. Open the Find My app on your iPhone or iPad, tap + and “Add Other Item plus-circle”.
2. While the Find My app is searching, press your Chipolo POP once and you will hear a beep.
3. After setup, you can locate your Chipolo POP in the Find My app on your iPhone, iPad or Mac and the Find Items app on Apple Watch.

Android / Google’s Find My Device app:

1. Press your Chipolo POP and place it next to your phone.
2. Wait for the pop-up to appear and follow the instructions on the screen.
If the pop-up does not appear, visit chipolo.net/no-popup
3. After setup, you can locate your Chipolo POP in the Find My Device app.

Chipolo app:

Download the Chipolo app from the Apple App store or Google Play store for extra features.

Need help

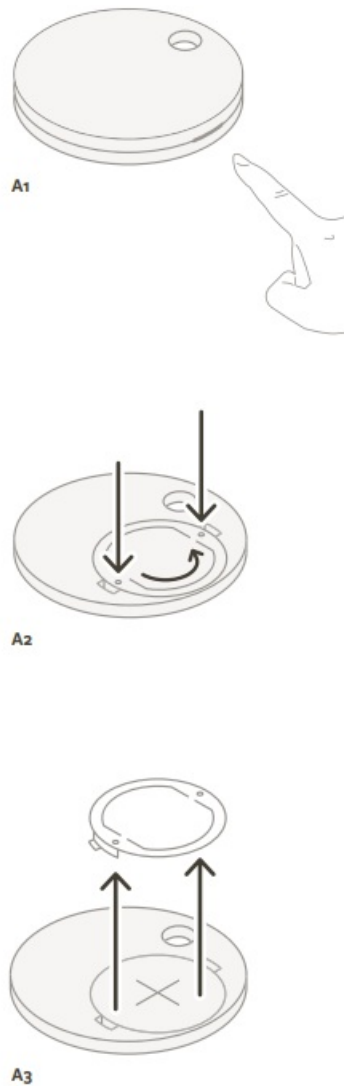
Visit our support pages at chipolo.net/support or contact our customer support at support@chipolo.net

Battery

This product has a replaceable CR2032 battery that will last up to 1 year. When the battery runs out you can replace it in 3 simple steps:

1. Use your fingernails or insert a smaller tool into the small gap on the side of the Chipolo and carefully remove the lid (A1)
2. With your thumbs, push down the battery cover and rotate counterclockwise (A2)
3. Remove the battery cover and replace the battery. To close, place the battery cover back on, rotate clockwise then cover with the Chipolo lid (A3)

Please use only the specified CR2032 battery type.



WARNING

- **INGESTION HAZARD:** This product contains a button cell or coin battery.
- **DEATH** or serious injury can occur if ingested.
- A swallowed button cell or coin battery can cause Internal Chemical Burns in as little as 2 hours.
- **KEEP** new and used batteries **OUT OF REACH** of **CHILDREN**.
- Seek immediate medical attention if a battery is suspected to be swallowed or inserted inside any part of the body

Fcc Compliance

Federal Communication Commission

Interference Statement (FCC) This device complies with Part 15 of the FCC Rules. Operation is subject to the following two conditions: (1) this device may not cause harmful interference, and (2) this device must accept any interference received, including interference that may cause undesired operation. This equipment has been tested and found to comply with the limits for a Class B digital device, pursuant to Part 15 of the FCC Rules. These limits are designed to provide reasonable protection against harmful interference in a residential installation. This equipment generates, uses and can radiate radio frequency energy and, if not installed and used in accordance with the instructions, may cause harmful interference to radio communications. However, there is no guarantee that interference will not occur in a particular installation. If this equipment does cause harmful interference to radio or television reception, which can be determined by turning the equipment off and on, the user is encouraged to try to correct the interference by one of the following measures:

- Reorient or relocate the receiving antenna.
- Increase the separation between the equipment and receiver.
- Connect the equipment into an outlet on a circuit different from that to which the receiver is connected.
- Consult the dealer or an experienced radio/TV technician for help.

The device complies with the FCC portable RF exposure limit set forth for an uncontrolled environment and is safe for intended operation as described in this manual. Any changes or modifications not expressly approved by the party responsible for compliance, may void the authorization to operate this equipment.

ISED Canada Compliance

This device complies with ISED's licence exempt RSS. Operation is subject to the following two conditions: (1) This device may not cause harmful interference, and (2) this device must accept any interference received, including interference that may cause undesired operation.

Any changes or modifications not expressly approved by the party responsible for compliance, may void the authorization to operate this equipment. This device complies with the RF exposure SAR test exclusion requirements for portable devices if a minimum separation distance of 0 mm is kept. However, the device shall be used in such a manner that the potential for human contact during normal operation is minimized.

CE AND UKCA – DECLARATION OF CONFORMITY

Chipolo d.o.o. hereby declares that this product is in compliance with the essential requirements and other relevant provisions of Directive 2014/53/EU and of the Radio Equipment Regulations (RER) SI 2017 No. 1206. The most recent and valid version of the DoC (Declaration of Conformity) can be viewed at chipolo.net/regulatory

Antenna Specs

- Modulation method: GFSK
- Antenna power: < 5 mW
- Operating frequency band: 2402–2480 MHz

APPLE LEGAL NOTICE

Use of the Works with Apple badge means that a product has been designed to work specifically with the technology identified in the badge and has been certified by the product manufacturer to meet Apple Find My network product specifications and requirements. Apple is not responsible for the operation of this device or use of this product or its compliance with safety and regulatory standards. Apple, iPad, iPhone, Mac, iPadOS, macOS, watchOS and Apple Find My are trademarks of Apple Inc., registered in the U.S. and other countries. IOS is a trademark or registered trademark of Cisco in the U.S. and other countries and is used under license.

WEEE DIRECTIVE & PRODUCT DISPOSAL

At the end of its service life, this product should not be treated as household or general waste. It should be handed over to the applicable collection point for recycling of electrical and electronic equipment or returned to the supplier for disposal.

Supplier is either the producer (Chipolo d.o.o., SI-1420 Trbovlje, Slovenia) or the place of sale if it offers such a service.

Frequently Asked Questions

Q: How long does the battery last?

A: The battery life is up to 1 year.


Q: Where can I find additional features for the product?

A: Download the Chipolo app from the Apple App Store or Google Play Store for extra functions.

Q: How can I get support if needed?

A: Visit our Support pages at chipolo.net/support or contact our Customer Support at support@chipolo.net.

Documents / Resources

	chipolo POP Key Finder [pdf] User Manual C24W, 2AD85-C24W, 2AD85C24W, POP Key Finder, POP, Key Finder, Finder
---	--

References

- [Chipolo](#)
- [Chipolo - Support](#)
- [User Manual](#)

[Manuals+](#), [Privacy Policy](#)

This website is an independent publication and is neither affiliated with nor endorsed by any of the trademark owners. The "Bluetooth®" word mark and logos are registered trademarks owned by Bluetooth SIG, Inc. The "Wi-Fi®" word mark and logos are registered trademarks owned by the Wi-Fi Alliance. Any use of these marks on this website does not imply any affiliation with or endorsement.