



---

[Home](#) » [CHIPOLINO](#) » **Chipolino 2024 Child Restraint System Instruction Manual** 

## Contents [ [hide](#) ]

- 1 Chipolino 2024 Child Restraint System
- 2 CAUTION! WARNINGS!
- 3 PRODUCT FEATURES
- 4 MAIN PARTS
- 5 INSTRUCTIONS FOR USE OF THE CHILD RESTRAINT SYSTEM
- 6 HEAD REST HEIGHT ADJUSTMENT
- 7 SHOULDER BELTS HEIGHT
- 8 LENGHT ADJUSTMENT OF SHOULDER BELTS
- 9 ISOFIX ATTACHMENTS ADJUSTMENT
- 10 ISOFIX ATTACHMENTS INSTALLATION
- 11 SEAT ROTATION AND RECLINING
- 12 INSTALLATION OF CAR SEAT IN VEHICLE
- 13 For child height 76-105 cm
- 14 5-POINT SAFETY BELT REMOVAL
- 15 FABRIC REMOVAL
- 16 CAR SEAT SIZES
- 17 SIDE PROTECTION SYSTEM (SPS)
- 18 CARE AND MAINTENANCE
- 19 Specifications:
- 20 FAQ:
  - 20.1 Q: Can the child restraint system be used for children outside the specified height range?
  - 20.2 Q: What should I do if I have doubts about the installation or usage of the car seat?
- 21 Documents / Resources
  - 21.1 References
- 22 Related Posts

## Chipolino 2024 Child Restraint System

# **VOLARE** car seat



## **INSTRUCTION MANUAL**

This child restraint system is manufactured in compliance with the requirements of Regulation No 129 of the Economic Commission for Europe of the United Nations (UN/ECE) — Uniform provisions concerning the approval of enhanced Child Restraint Systems used on board of motor vehicles (ECRS), the provisions of the Product safety Directive 2001/95/EU of the European Parliament and The Council as well as the Consumer Protection Law of Bulgarian Legislation.

Child restrained system “VOLARE” is suitable for children with height 40-150 cm, approx. age 0-12 years:

I-Size universal ISOFIX: 40-105 cm /  $\leq 18$  kg.

I-Size booster seat: 100-150 cm



Height of child	Position of car seat	Installation way of car seat	Approved type
40-105 cm	„REARWARD“ facing	ISOFIX + Top tether + belts of car seat	i-Size Universal ISOFIX
76-105 cm	„FORWARD“ facing	ISOFIX + Top tether + belts of car seat	i-Size Universal ISOFIX
100-150 cm	„FORWARD“ facing	3-point vehicle belt	i-Size booster seat
		3-point vehicle belt + ISOFIX attachment	

**N O T I C E** for i-Size restraint system for children with height 40-105 cm

Size range: 40-105 cm

This is an enhanced “i-Size” Child Restraint System. It is approved to Regulation No.129, for use in, “i-Size compatible” vehicle seating positions as indicated by vehicle manufacturers in the vehicle users’ manual.

If in doubt, consult either the child restraint manufacturer or the retailer.

**N O T I C E** for i-Size booster seat for children with height 100-150 cm

Size range: 100-150 cm

This is an enhanced Child Restraint System type “booster seat”. It is approved to Regulation No.129, for use in, “i-Size compatible” vehicle seating positions as indicated by vehicle manufacturers in the vehicle users’ manual.

If in doubt, consult either the child restraint manufacturer or the retailer.

- DO NOT FORGET THAT NO RESTRAINT SYSTEM CAN
- PROVIDE ABSOLUTE PROTECTION IN CASE OF A CRASH OR ROAD ACCIDENT!

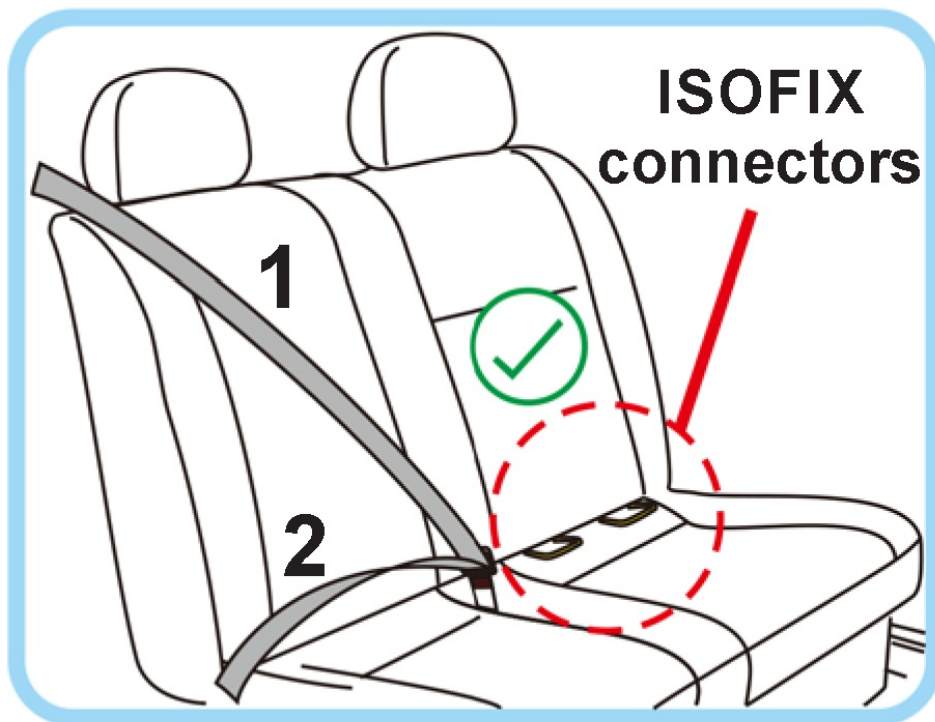
- DRIVE WITH CARE WHEN THERE IS A CHILD IN YOUR VEHICLE!
- IN ORDER TO ENSURE THE SAFETY OF YOUR CHILD,
- FOLLOW EXACTLY THE INSTRUCTIONS AND SAFETY
- RECOMMENDATIONS IN THIS MANUAL!
- MISUSE OF THE CAR SEAT WILL CONTRIBUTE TO REDUCING
- ITS SECURITY AND SAFETY FEATURES! FAILURE
- OF THE GUIDELINES OF THIS INSTRUCTION
- INCREASES THE RISK OF SERIOUS INJURY OR DEATH!

## CAUTION !

1. NEVER INSTALL THE CAR SEAT IN “FORWARD FACING” POSITION BEFORE THE CHILD’S AGE EXCEEDS 15 MONTHS!
2. NEVER INSTALL AND USE THE RESTRAINT SYSTEM IN POSITION “REARWARD” FACING ON A VEHICLE SEAT EQUIPPED WITH ACTIVATED AIR BAG! THIS MAY RESULT IN DEATH OR SERIOUS INJURIES!



3. NEVER INSTALL THE CAR SEAT IN “FORWARD FACING” POSITION BEFORE THE CHILD’S HEIGHT EXCEEDS 76 CM!
4. DO NOT USE ANCHOR POINTS OTHER THAN THE ONES DESCRIBED IN THIS MANUAL AND MARKED ON THE RESTRAINT SYSTEM!



1 – Diagonal belt of vehicle seat

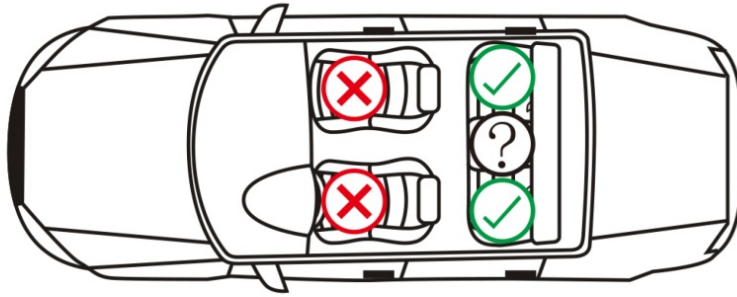
2 – Lap belt of vehicle seat

**NEVER INSTALL THE CAR SEAT IN VEHICLE WITH 2-POINT BELT! INSTALL IT ONLY IN VEHICLE WITH 3-POINT SAFETY BELT!**

**CAUTION!** This car seat is only suitable for installation in vehicles fitted with **APPROVED 3-POINT SAFETY BELTS WITH RETRACTOR**, meeting the requirements of Regulation no. 16 of EC of UN!

**NOTICE:** It is recommended that ISOFIX attachments of car seat to be locked to ISOFIX connectors during installation.

**PLACES FOR INSTALATTION OF THE CAR SEAT IN THE VEHICLE**



Suitable place for installation of car seat.



Not suitable place for installation of car seat.



Suitable only if vehicle seat is equipped with ISOFIX connectors.

## CAUTION! WARNINGS!

- CAUTION! NEVER LEAVE YOUR CHILD UNATTENDED!
- CAUTION! DO NOT USE ANCHOR POINTS OTHER THAN THE ONES DESCRIBED IN THIS MANUAL AND MARKED ON THE RESTRAINT SYSTEM.
- CAUTION! WHEN YOU INSTALL THE CAR SEAT IN POSITION „REARWARD FACING“, NEVER PLACE IT ON PASSENGER SEAT, EQUIPPED WITH AIRBAG! THIS MAY LEAD TO SERIOUS INJURY OR DEATH!
- CAUTION! NEVER INSTALL THE CAR SEAT IN DIRECTION OF NORMAL MOVEMENT OF THE VEHICLE AND POSITION OF THE CHILD “FORWARD FACING” BEFORE THE CHILD EXCEEDS 15 MONTHS OLD!
- CAUTION! THE VEHICLE SAFETY BELTS WHICH HOLD THE CAR SEAT TO THE PASSENGER SEAT MUST BE TIGHTENED AND FIXED!
- CAUTION! THE CAR SEAT SAFETY BELTS MUST BE PROPERLY ADJUSTED ACCORDING TO CHILD’S HEIGHT, NOT TWISTED AND SNUG WELL AGAINST BABY’S BODY.
- CAUTION! THE LAP BELT MUST BE PLACED LOW DOWN, SO THAT THE PELVIS IS FIRMLY ENGAGED WITHOUT PRESSING!
- CAUTION! DO NOT MAKE CHANGES, ADDITIONS OR MODIFICATIONS ON THE CAR SEAT WITHOUT THE APPROVAL OF THE NOTIFYING AUTHORITY ! IT IS DANGEROUS NOT TO KEEP STRICTLY THE INSTRUCTIONS GIVEN BY THE MANUFACTURER!
- CAUTION! KEEP AWAY FROM FIRE!
- Installation in the vehicle and securing the child in the car seat to be done only by

adult!

- The hard parts and the parts of the child restraint made of plastic should be located and installed so that when the vehicle is in normal use, they can not be trapped by a sliding seat or in a door of the vehicle.
- Do not allow the safety belts of the car seat and the vehicle to be twisted, frayed or torn, latches and locks (buckles) must be always in good order and firmly fixed.
- If you find uncertainty or defect in the structure, latches, straps or locking mechanisms of the car seat or ISOFIX attachments , discontinue usage until removal of the damaged parts and replacement with new ones.
- After a violent impact the car seat and belts may be damaged, therefore, it is recommended to replace the car seat with a new one.
- Never use a second hand child restraint. It may have suffered structural damage, which may make the child restraint extremely dangerous.
- Do not use this car seat without its seat cover and do not replace it with a new one, unless supplied by the manufacturer. The fabric parts are integral parts of the restraint system and its safety features!
- Any luggage or other objects that could cause injury in the event of a collision must be well secured.

Remove or secure at a safe distance from the seat and child any luggage that may cause injury in the event of a sudden stop or accident while driving.

- Always check that the seat is firmly attached to the vehicle seat, even when you are not placing a child in it. A loose car seat, even without a child in it, can cause injury in the event of a collision.
- Do not put additional pads except the ones supplied from the manufacturer!
- Do not use spare parts and other components not supplied by the manufacturer. The manufacturer assumes no responsibility for safety in the event that are used spare parts other than original.
- Keep the instructions for use in the space provided in the car seat or in the vehicle in which you are going to use the car seat.
- Do not expose the car seat to direct sunlight to prevent the child from burning, deforming the car seat and especially the plastic parts.
- The car seat does not replace the child's cot or bed. When a child needs a sleep, you have to place him/her in a suitable baby stroller, baby crib or bed.
- Do not attach objects with long cords or strings on the car seat in order to avoid



danger of suffocation!

- Never place the car seat on beds, couches or similar soft surfaces!
- Do not allow children to play with the product!
- Do not remove stickers and warnings – they contain important information!
- The packaging of the product must be kept out of the reach of children at the time of and after unpacking in order to avoid the risk of strangulation!

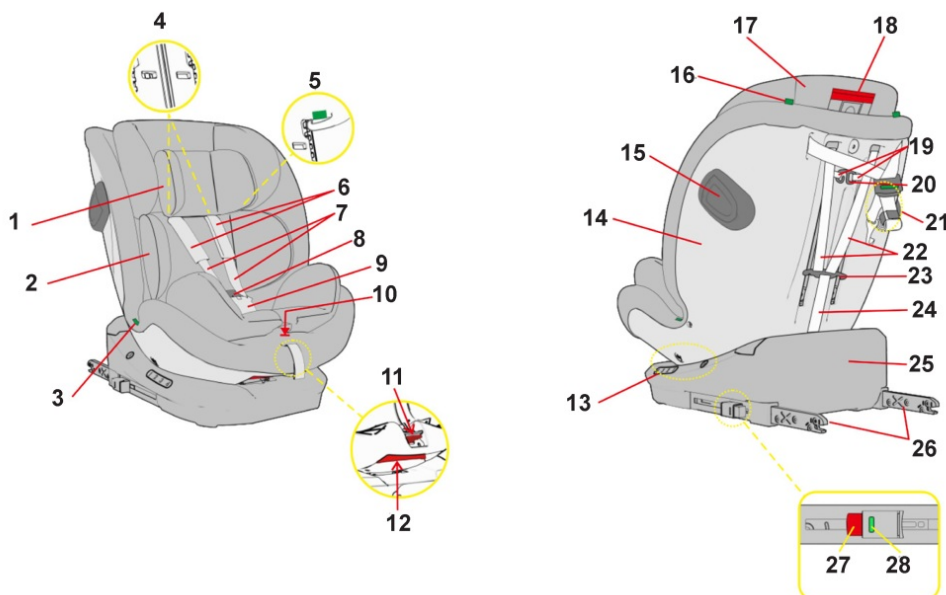
## PRODUCT FEATURES

This is child restrained system “VOLARE” is suitable for children with height 40-150 cm, approx. age 0-12 years.

- The child restraint rotates 360 degrees on the base;
- Backrest recline;
- Headrest height adjustment;
- 5-point safety harness on the restraint;
- Additional soft pads;
- Side impact protection (SPS).

CAUTION! WHILE VEHICLE IS IN MOTION, CAR SEAT MUST BE FIXED ONLY IN POSITION “REARWARD FACING” OR “FORWARD FACING” ACCORDING TO CHILD’S HEIGHT!

## MAIN PARTS



**WARNING!**

Use the additional soft pad only for children with height 40-87 cm

1	Additional soft head pillow	1 5	Side protection system (SPS)
2	Additional soft cushion	1 6	Guide marking for top tether
3	Vehicle belt guide (marking)	1 7	Head rest
4	Channels for shoulder belts	1 8	Head rest adjustment handle
5	Guide-hook for vehicle belt	1 9	Strap for shoulder belts
6	Soft shoulder pads	2 0	Connector for shoulder belts
7	Shoulder belts	2 1	Top tether
8	Central buckle	2 2	Belts
9	Soft crotch pad	2 3	Connecting hook for belts
1 0	Shoulder belts release button (under the fabric cover)	2 4	Strap for shoulder belts length adjustment
1 1	Seat rotation button	2 5	Base
1 2	Recline lever	2 6	ISOFIX attachments

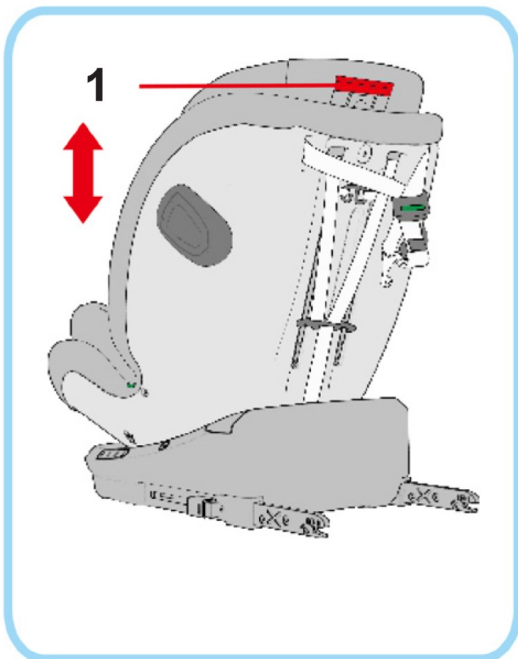
1 3	Marking for recline position	2 7	ISOFIX release button
1 4	Backrest	2 9	Indicator for ISOFIX attachments

## INSTRUCTIONS FOR USE OF THE CHILD RESTRAINT SYSTEM

### IMPORTANT!

- Follow exactly the instructions and sequence of installation steps and use of the product described in the text and figures of this manual.
- Check the security of fixing after each operation!
- ALWAYS CHECK THE SECURITY OF FIXING OF THE SAFETY BELTS!
- After each installation make sure that the seat belts are not twisted and they are in the correct position.

## HEAD REST HEIGHT ADJUSTMENT



**ATTENTION!** Before car seat installation, adjust the head rest according to child's height. Head rest can be set in 11 positions.

Pull the head rest adjustment handle (1) and at the same time move the head rest up or

down until you reach the required position. By fixing you will hear a click sound.

**IMPORTANT!** Make sure that head rest is fixed in suitable height by trying to pull it upwards and press down!

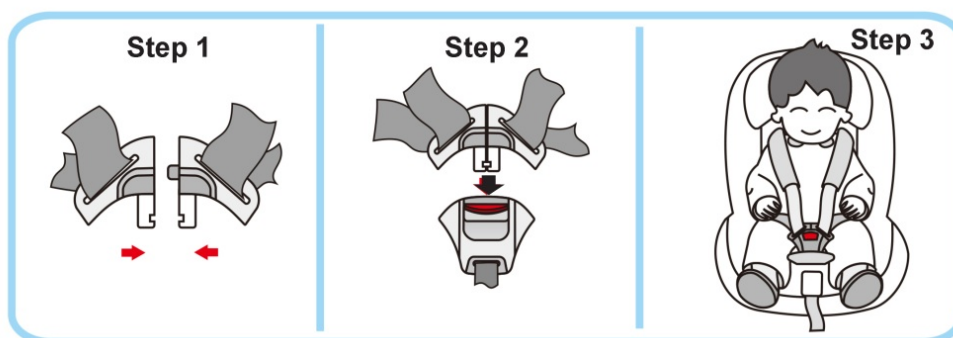
## SHOULDER BELTS HEIGHT



**ATTENTION!** Shoulder belts must be at the level of child 's shoulder or a little above them as shown in figure 3. They must not be higher than child's shoulders or lower than them.

Height of shoulder belts is adjusted simultaneously with the adjustment of head rest.

**ATTENTION!** If the head rest must be set between 2 positions, select the higher one.



Step 1: Join the metal endings at both shoulder belts.

Step 2: Insert joined metal endings into the central buckle. By locking you will hear a click sound.

Make sure that belts are locked into the buckle by trying to pull them up.

Step 3: To unlock the belts, press the red button and the metal endings will jump automatically from central buckle.

## LENGTH ADJUSTMENT OF SHOULDER BELTS



### 1. Shoulder belt tightening

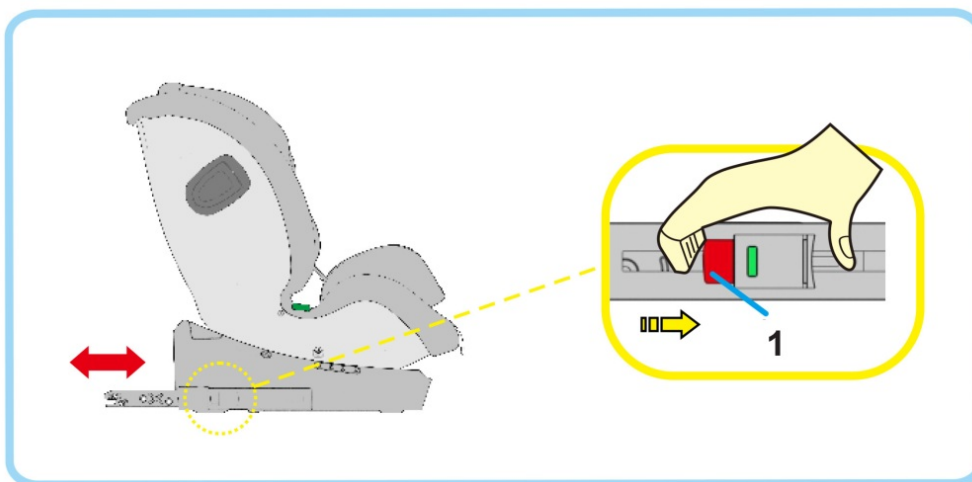
Pull the adjustment strap so that the belts snug well the body of child without pressing it or causing discomfort. Recommended distance between body of child and belts is 2 fingers (around 2 – 3 cm). Waist belt must be in lowest possible position close to crotch and not child' stomach.

**ATTENTION!** Make sure that belts are not twisted and snug well the child without pressing it! (Fig. 1)

### 2. Shoulder belts loosening

Press the shoulder belts release button with one hand and pull out the belts with the other hand (Fig. 2).

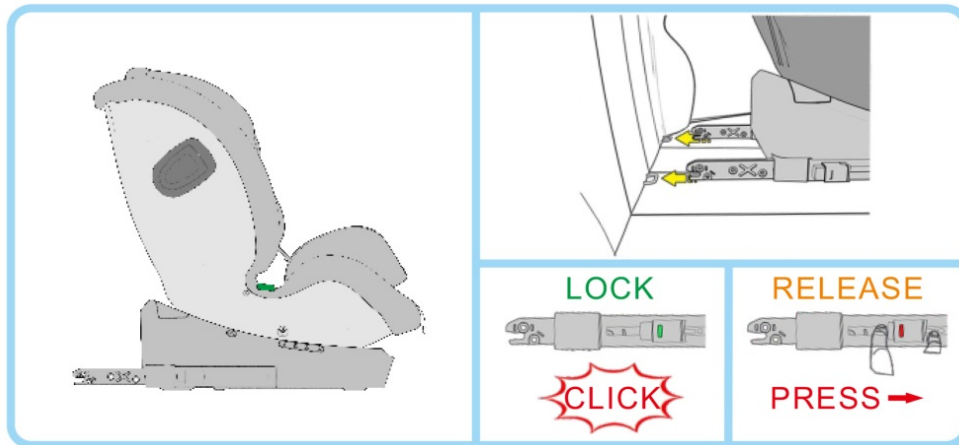
## ISOFIX ATTACHMENTS ADJUSTMENT



Grab and press the button for ISOFIX attachments release, as shown in the figure and at the same time move the ISOFIX attachment maximum out. Do the same actions with the other ISOFIX attachment.

To store the ISOFIX attachment back, press the button for releasement and press the ISOFIX attachments inwards.

## ISOFIX ATTACHMENTS INSTALLATION



Step 1: Pull the ISOFIX attachments maximum out and insert them into ISOFIX anchors at vehicle.

Press the car seat back until you hear a click sound and it fixes.

**WARNING!** ISOFIX attachments are fixed when both indicators are fully green (LOCK).

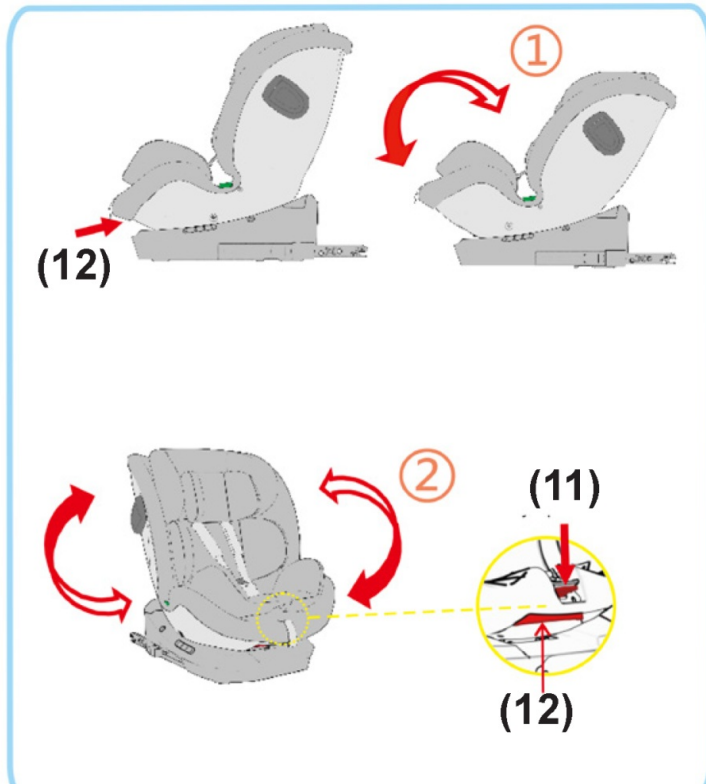
Note: If indicators are red, do the installation again by following the above-described order of actions.

**ATTENTION!** The bottom of car seat must lay firmly on vehicle seat without causing gaps between car seat and vehicle seat.

Step 2: Press the car seat firmly to vehicle seat.

If you want to release (RELEASE) the ISOFIX attachments, press (PRESS) the red button.

## SEAT ROTATION AND RECLINING



1 – Press the reclining lever (12) and set the seat in suitable angle:

Position A: for child height 40-105 cm and car seat

### **REARWARD facing**

Positions 1,2,3,4: for child height 76-105 cm and car seat FORWARD facing

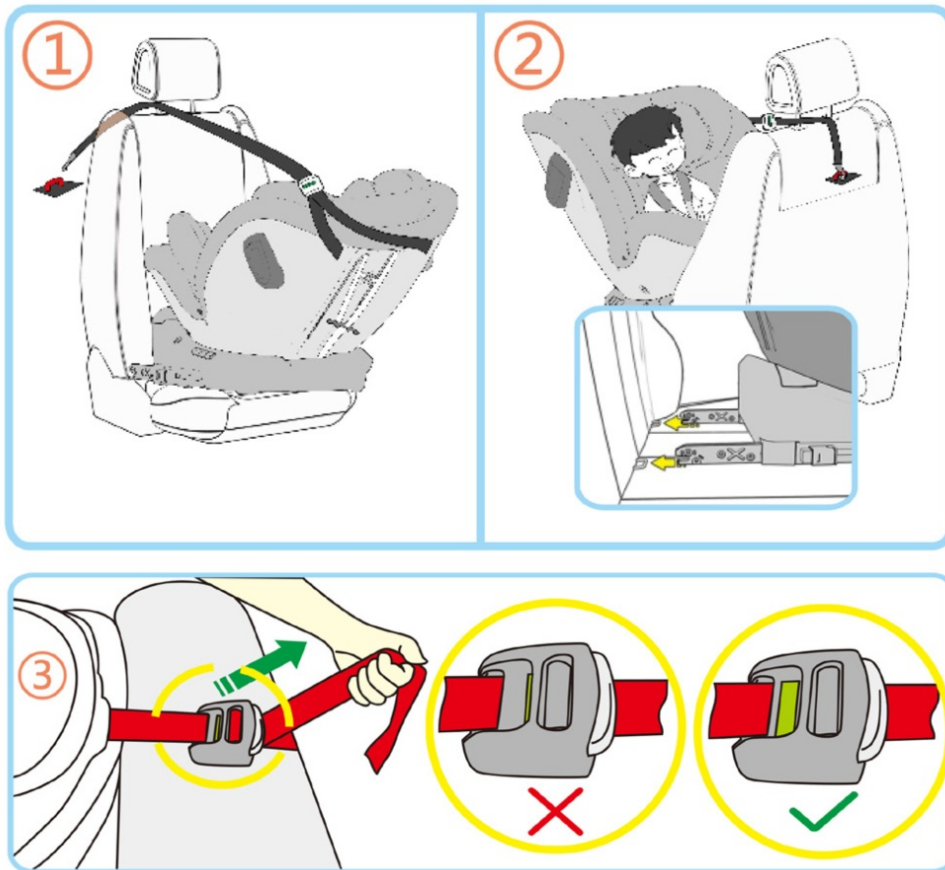
Position 1 (the most upright position): for child height 100-155 cm and car seat FORWARD facing.

2 – Press the button for seat rotation (11) and rotate the seat until required position.

### **INSTALLATION OF CAR SEAT IN VEHICLE**

For child height 40-105 cm

Car seat must be installed in REARWARD facing direction.



Step 1: Install the car seat in vehicle with ISOFIX attachments (See „ISOFIX ATTACHMENTS ADJUSTMENT“ and „ISOFIX ATTACHMENTS INSTALLATION“). Push the backrest of car seat firmly towards the vehicle seat backrest and make sure that car seat is well pressed.

**CAUTION!** ISOFIX attachments are fixed only when both indicators are fully green.

Step 2: Place the seat in the most upright position (Position 1) and rotate it at 180° until position A.

Step 3: Unlock the 5-point safety belt and loose the shoulder belts. Place the child in car seat, fasten the 5-point safety belt and tighten around the child.

**CAUTION!** Make sure that shoulder belts and head rest are in correct and suitable height! **CAUTION!** Make sure that belts are not twisted and snug well the child without pressing it!

Step 4: Press the button for top tether length adjustment (3-white button) and pull the top tether at maximum.



Thread the top tether along the green guide marking position 16 from Main Parts and under the head rest of vehicle seat (fig. 1, 2).

Attach the hook of top tether to the attachment point of vehicle.

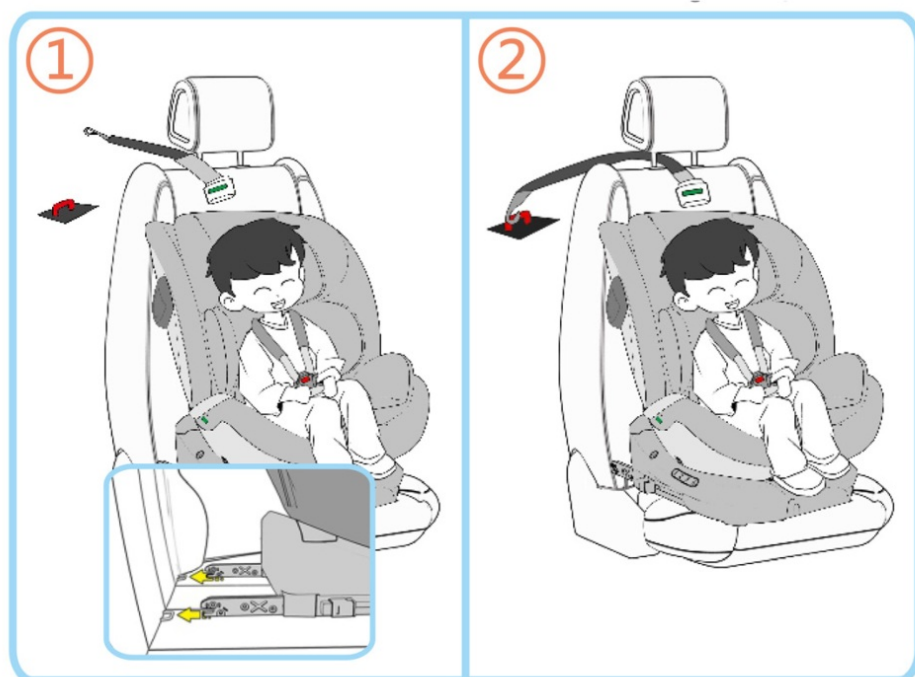
At last pull the top tether back to tighten it.

**CAUTION!** After tightening the belt indicator of top tether must be fully green .

**Note:** If indicator is red , do the installation again by following the above-described order of actions. **CAUTION!** Make sure that belts are not twisted!

### For child height 76-105 cm

Car seat must be installed in FORWARD facing direction.



Step 1: Install the car seat in vehicle with ISOFIX attachments (See „ISOFIX ATTACHMENTS ADJUSTMENT“ and „ISOFIX ATTACHMENTS INSTALLATION“). Push the backrest of car seat firmly towards the vehicle seat backrest and make sure that car seat is well pressed.

**CAUTION!** ISOFIX attachments are fixed only when both indicators are fully green.

Step 2: Adjust the backrest recline in required position – Positions 1,2,3,4.

Step 3: Press the button for top tether length adjustment (3-white button) and pull the top tether at maximum.

Thread the top tether directly behind above the vehicle seat (fig. 1, 2).

Attach the hook of top tether to the attachment point of vehicle. At last pull the top tether back to tighten it.

**CAUTION!** After tightening the belt indicator of top tether must be fully green .

Note: If indicator is red , do the installation again by following the above-described order of actions.

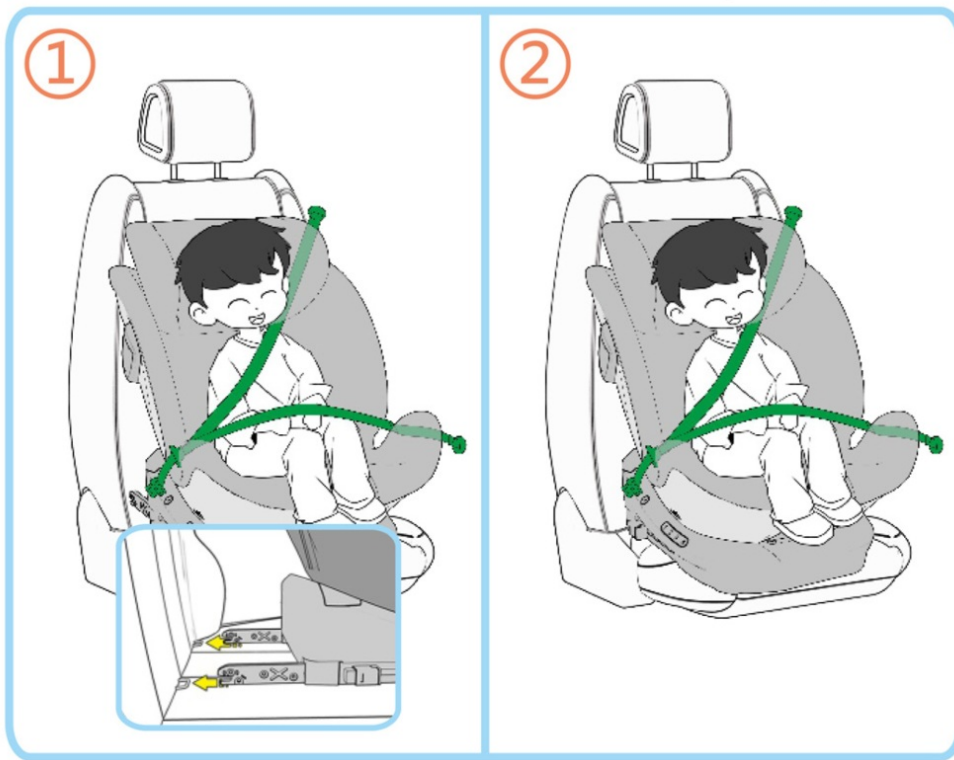
Step 4: Unlock the 5-point safety belt and loose the shoulder belts. Place the child in car seat, fasten the 5-point safety belt and tighten around the child.

**CAUTION!** Make sure that shoulder belts and head rest are in correct and suitable height!

**CAUTION!** Make sure that belts are not twisted and snug well the child without pressing it!

**For child height 100-150 cm**

Car seat must be installed in FORWARD facing direction.



Step 1: Place the seat in the most upright position – Position 1.

Step 2: Remove the 5-point safety belt of car seat (See „5-POINT SAFETY BELT REMOVAL“)

Step 3: There are 2 ways to install the car seat on vehicle seat:

#### **Variant A – installation with ISOFIX and 3- point vehicle safety belt:**

Install the car seat in vehicle with ISOFIX attachments (See „ISOFIX ATTACHMENTS ADJUSTMENT“ and „ISOFIX ATTACHMENTS INSTALLATION“). Push the backrest of car seat firmly towards the vehicle seat backrest and make sure that car seat is well pressed.

**CAUTION!** ISOFIX attachments are fixed only when both indicators are fully green.

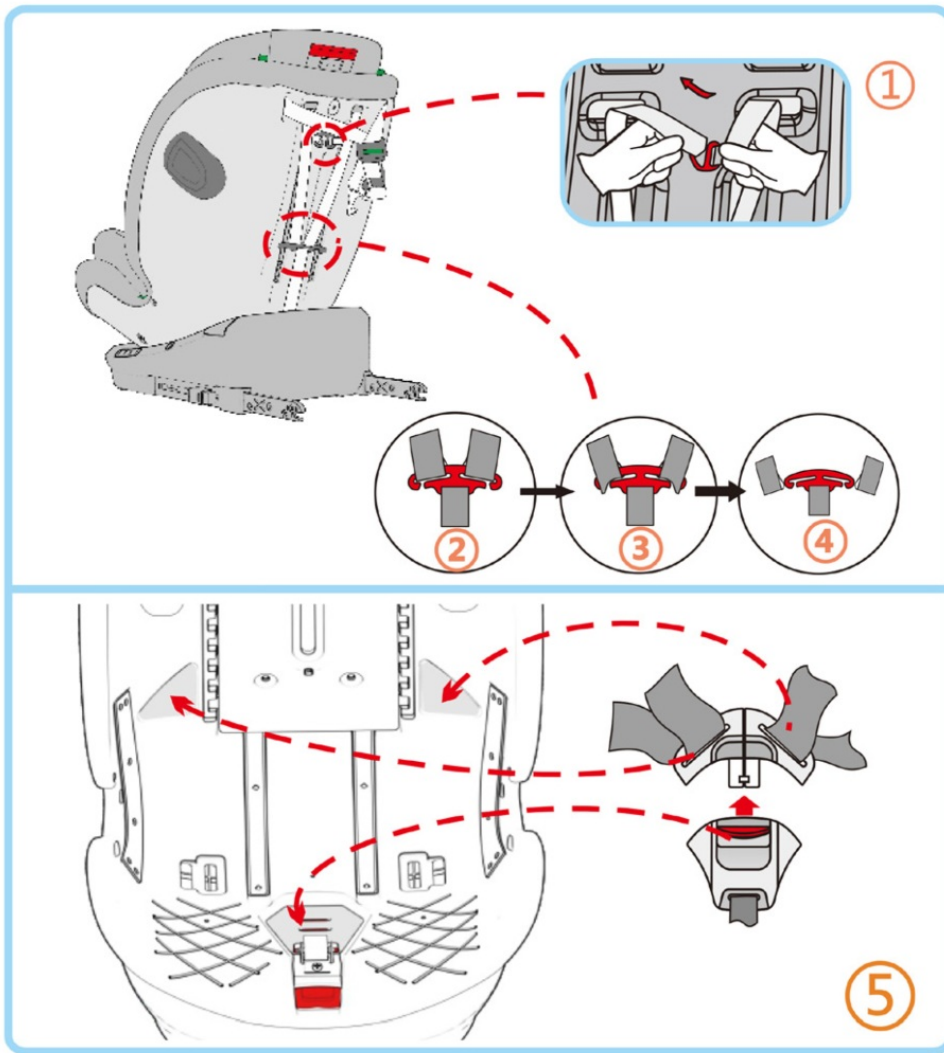
Secure the child with 3-point vehicle safety belt by threading the belt as shown of fig. 1.

Variant B – installation with 3-point vehicle safety belt (no ISOFIX):

Secure the child with 3-point vehicle safety belt by threading the belt as shown of fig. 2.

**CAUTION!** Make sure that belts are not twisted!

#### **5-POINT SAFETY BELT REMOVAL**

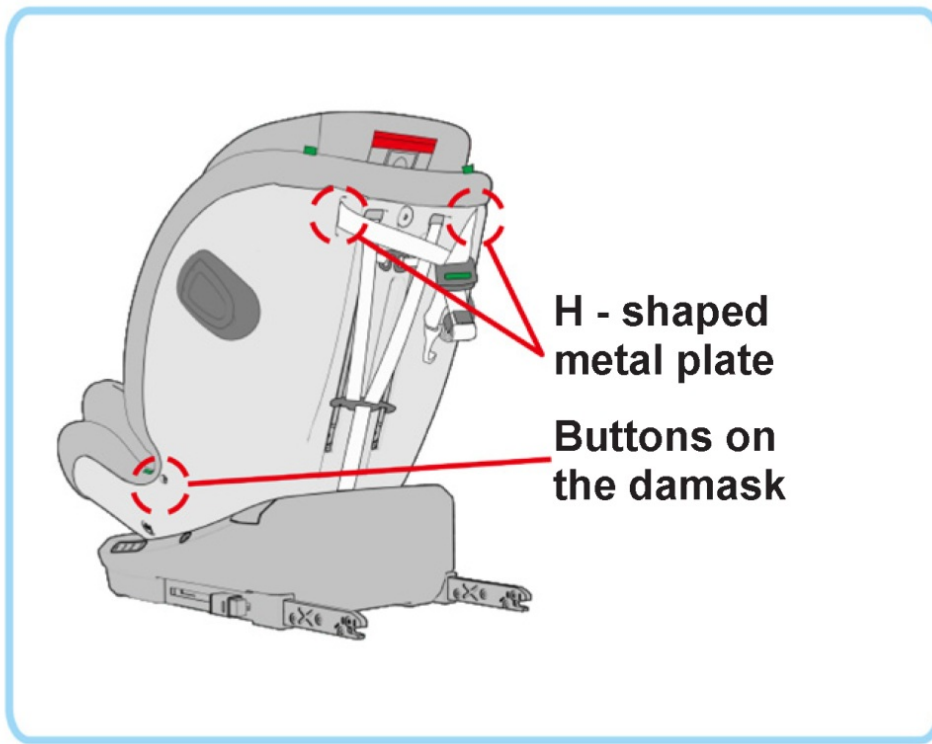


Step 1: Loose the shoulder belts (See Shoulder belts loosening).

Step 2: Release the belts at the back of the backrest (points 19 and 20 from main parts diagram), as shown in fig. 1, 2, 3, 4.

Step 3: Unlock the belts from the central buckle and remove the additional pillow and all soft pads. Step 4: Store the belts and central buckle under the fabric cover of car seat in car seat body as shown in fig. 5.

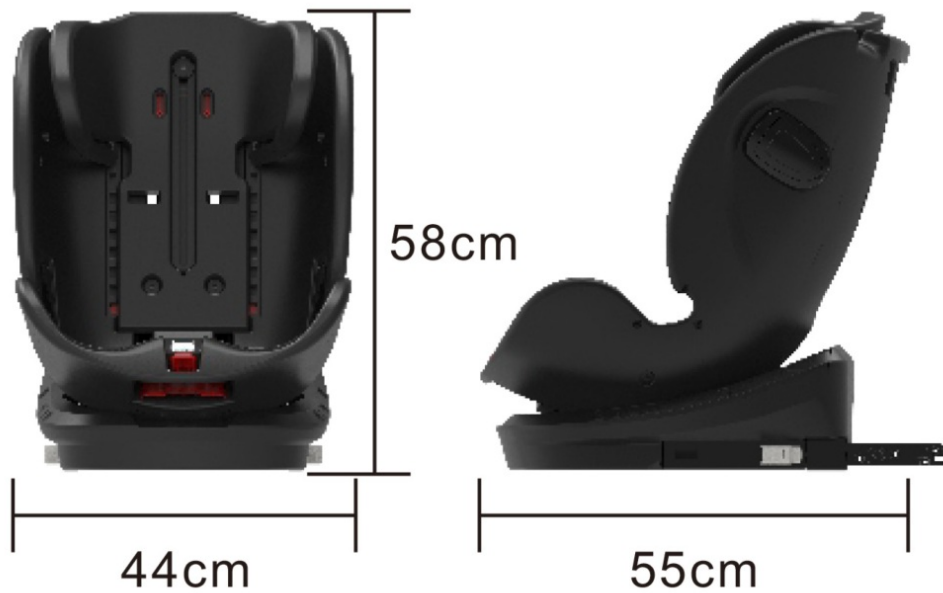
## FABRIC REMOVAL



1. Remove the additional pillow and all soft pads and crotch pad.
2. Store the belts and central buckle under the fabric cover (See „5-POINT SAFETY BELT REMOVAL“).
3. Remove top tether. Take out both H-shaped metal planks (for attachment) from backrest.
4. Unfasten the snap buttons at both sides close to marking for guide of 3-point safety belt and remove the fabric cover.

To place the fabric cover back, do the described actions in opposite order.

## **CAR SEAT SIZES**



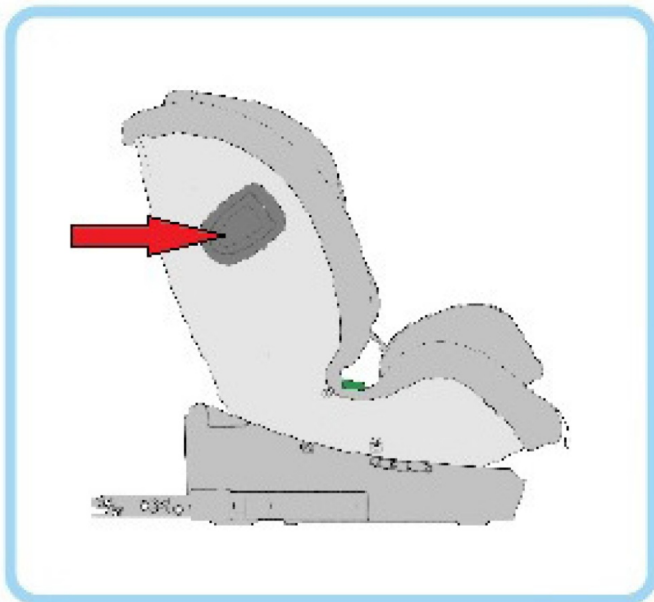
Length: 55 cm

Width: 44 cm

Height: 58 cm

Weight: 10 kg

## **SIDE PROTECTION SYSTEM (SPS)**



The additional side protection system SPS is designed so that in case of side impact to reduce the energy and absorb the stress to baby's head and neck.

To use the additional side protection system, pull the cover inwards. You will hear a click sound and the cover will fix.

**CAUTION!** By using the SPS of car seat, activate the side protection system at the side that is closer to vehicle door.

## CARE AND MAINTENANCE

- Clean the fabrics, plastic parts and metal parts with damp cotton cloth or sponge and mild soap
- Fabric cover and soft pads may be hand washed at 30°C using mild detergent!
- Do not bleach! Do not tumble dry! Do not machine wash! Do not iron!
- Do not use abrasive, bleach or other aggressive detergents.
- Always after cleaning leave the car seat fully dry and after that use it or store it.
- Harnesses must be cleaned with damp cloth and mild soap!
- Do not wet or remove the stickers. They contain important information!
- Always store your car seat indoors – on dry and clean place. Do not expose to direct environment influence – sun, rain, moisture and high temperature intervals.
- Please, contact your authorized dealer for problems connected with the use or repair.

### Fabric:

Outer: 100% polyester

Filling: 100% polyester



Materials used: plastic, metal, textile

### Specifications:

- Child Restraint System Name: VOLARE
- Suitable for children with height: 40-150 cm
- Approximate age range: 0-12 years
- I-Size universal ISOFIX: 40-105 cm / 18 kg
- I-Size booster seat: 100-150 cm

Bulgaria, Plovdiv, Str. Golyamokonarsko shosse № 1

[www.chipolino.com](http://www.chipolino.com)

---

## FAQ:


**Q: Can the child restraint system be used for children outside the specified height range?**

A: It is recommended to use the child restraint system within the specified height range for optimal safety and protection.

**Q: What should I do if I have doubts about the installation or usage of the car seat?**

A: If in doubt, consult either the child restraint manufacturer or the retailer for guidance on proper installation and usage.

## Documents / Resources

	<a href="#">Chipolino 2024 Child Restraint System [pdf]</a> Instruction Manual 2024 Child Restraint System, 2024, Child Restraint System, Restraint System
---	---

## References

- [User Manual](#)

## Related Posts



[Evenflo Sonus 65 Child Restraint System Owner's Manual](#)

Evenflo Sonus 65 Child Restraint System Owner's Manual





### [chicco MySeat i-Size Child Car Seat User Manual](#)

chicco MySeat i-Size Child Car Seat User Manual

WARNING- This is an i Size Enhanced Child Restraint System,...



### [SPARCO 3002NRGR Child Seat Owner's Manual](#)

EU Declaration of Conformity (DoC) 3002NRGR Child Seat We Company name: ABC PARTS SPAIN SL Postal address: C/N2...



### [Chicco My Seat i-Size User Manual](#)

Chicco My Seat i-Size WARNING This is an i-Size Enhanced Child Restraint System. It is approved according to...

2024, 2024 Child Restraint System, Child Restraint System, CHIPOLINO, Restraint

CHIPOLINO System

—Previous Post

### [Chipolino Melody Baby Rocker User Manual](#)

## Leave a comment

Your email address will not be published. Required fields are marked \*

Comment \*

Name

Email

Website

☐ Save my name, email, and website in this browser for the next time I comment.

**Post Comment**

**Search:**

e.g. whirlpool wrf535swhz

**Search**

[Manuals+](#) | [Upload](#) | [Deep Search](#) | [Privacy Policy](#) | [@manuals.plus](#) | [YouTube](#)

This website is an independent publication and is neither affiliated with nor endorsed by any of the trademark owners. The "Bluetooth®" word mark and logos are registered trademarks owned by Bluetooth SIG, Inc. The "Wi-Fi®" word mark and logos are registered trademarks owned by the Wi-Fi Alliance. Any use of these marks on this website does not imply any affiliation with or endorsement.