

CHIPHY F1013 LED Magic Color Floor Lamp



CHIPHY F1013 LED Magic Color Floor Lamp User Manual

[Home](#) » [CHIPHY](#) » CHIPHY F1013 LED Magic Color Floor Lamp User Manual 

Contents

- [1 CHIPHY F1013 LED Magic Color Floor Lamp](#)
- [2 Specifications](#)
- [3 Parts Identification Guide](#)
- [4 Remote Control Instructions](#)
- [5 APP Installation Procedure](#)
- [6 Warranty](#)
- [7 Documents / Resources](#)
 - [7.1 References](#)
- [8 Related Posts](#)

CH | PHY

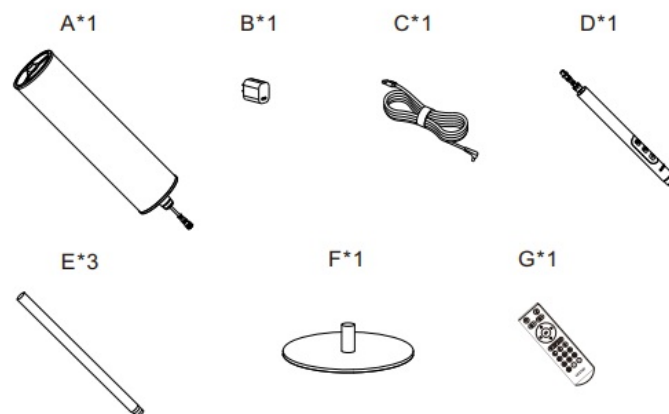
CHIPHY F1013 LED Magic Color Floor Lamp



Specifications

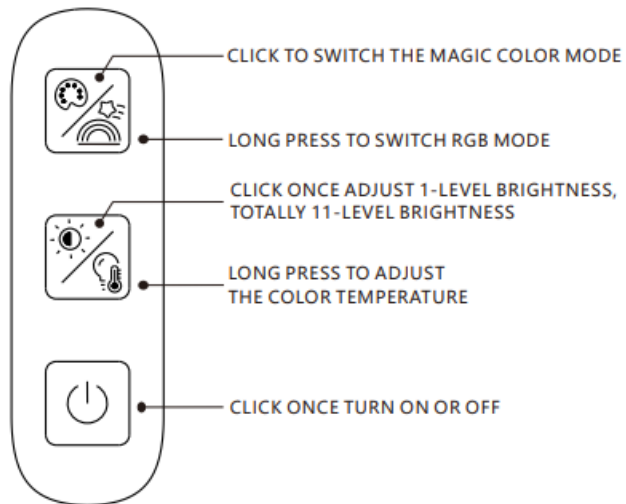
- Model: ZF-Magic-F13
- Dimensions: F1013 D230*1915 mm
- Material: Aluminum/Plastic/Steel
- Power: 18W
- Volt Lifespan: DC 5V 30000h

Parts Identification Guide



- A*1
- B*1
- C*1
- D*1
- E*3
- F*1
- G*1

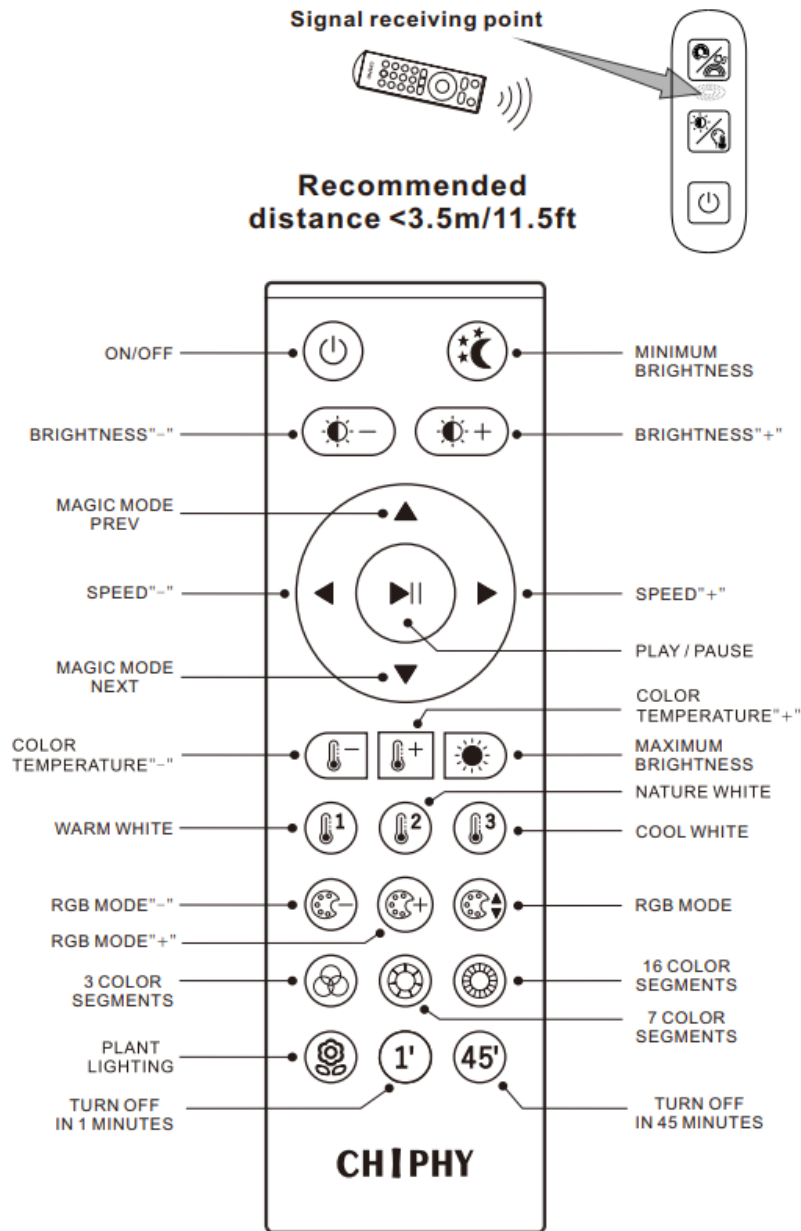
Touch Control Instructions



The floor lamp comes with touch control features. Follow the instructions below to control the lamp:

- Click the touch button once to switch the magic color mode.
- Long press the touch button to switch to RGB mode.
- Click the touch button once to adjust the brightness level.
- There are 11 levels of brightness in total.
- Long press the touch button to adjust the color temperature.
- Click the touch button once to turn the lamp on or off.

Remote Control Instructions



The floor lamp also comes with a remote control for convenient operation. The remote control works within a recommended distance. Ensure that you are within the range for proper signal reception.

Signal Receiving Point

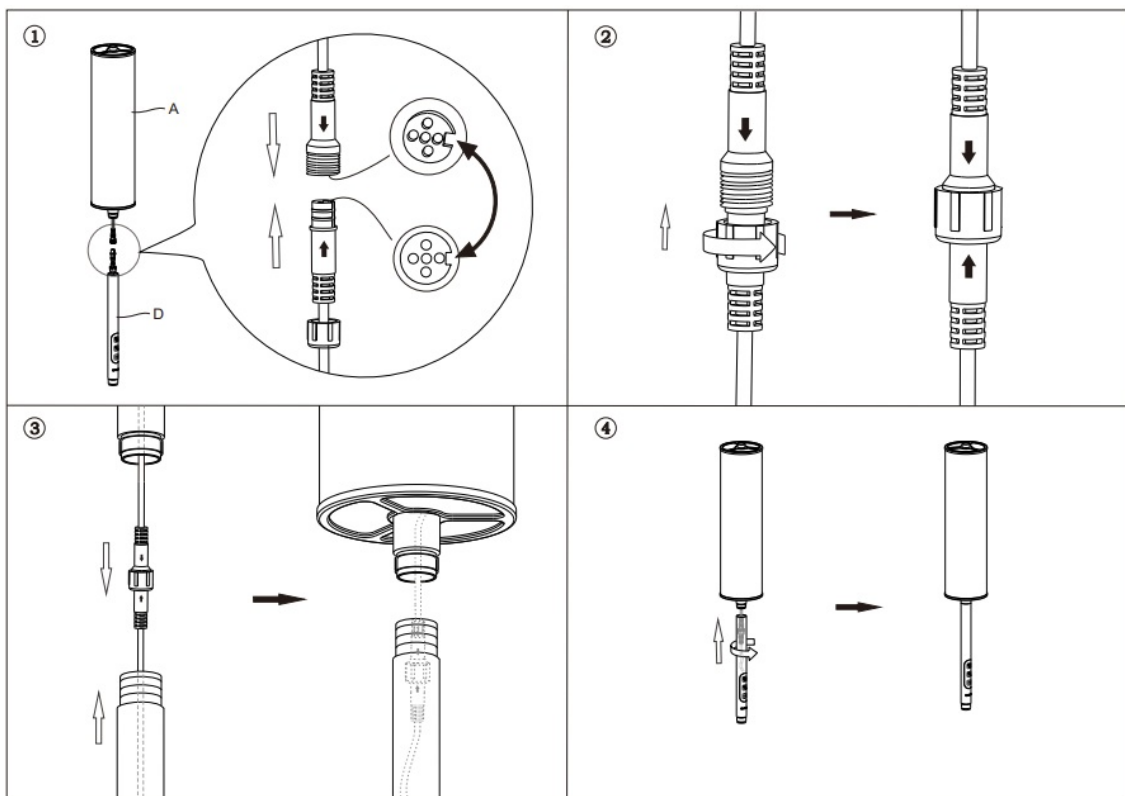
Point the remote control towards the signal receiving point on the lamp for optimal functionality.

Recommended Distance

Stay within the recommended distance from the lamp for effective remote control operation.

APP Installation Procedure

How to operate



1. Download 'Smart Life® App (two ways to get the APP)

- By scan QR code.



- Search " Smart Life " by Google play (for android system). Search " Smart Life " by APP store (for Apple- IOS).

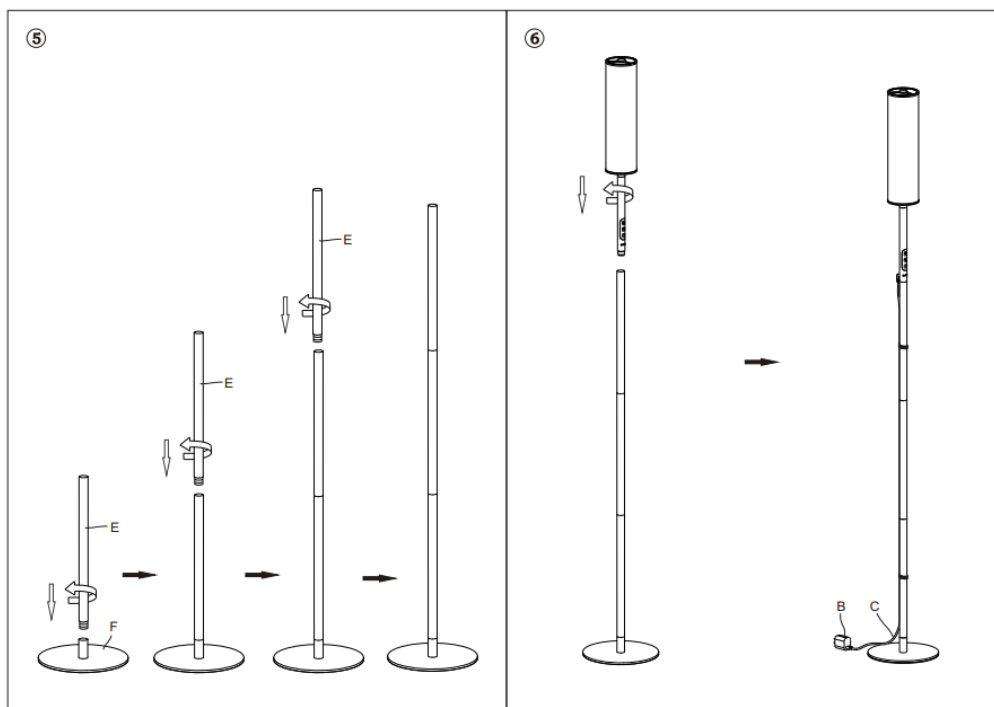
2. Register and sign in APP

- Run the APP.
- Login with your account & password, For the first time using. you have to register a new acc-

3. Configuration

- Power the WIFI LED Lamp. If you don't config-uration it is a normal LED lamp
- How to connection to WiFi:
- if no network is configured, the white light flas- hes for 18 seconds and prompt configure network when powering on the device.

4. You can use App configured network within 3 minutes after powering on the device



5. The product can be reset and the network can be cancelled after power on and off for 5 consecutive times.
6. Open the "Smart Life" APP, Click on the button "+". Select the WIFI network and enter the password (if applicable). Tap "next" (Note: Currently does not support 5G band WiFi network).
7. The app proceeds through the configuration process. Once connected, the 'Add successfully' message appears. The name of the smart lamp in the app is ZF-Magic-F13*).
8. If you select "AP mode" after Click the "Add devices", you need go to Wifi settings and connect to hotspot. After connected, search Wifi router (no password). Device is connected.

How to connect Smart Lamp to Alexa

Launch Smart Life App, sign in your account and make sure Smart Lamp is in device list. Modify device name so that Alexa can easily recognize, such as: Living Room Light, Bedroom Light, etc. Minimize Smart Life APP, then launch the Alexa App and sign in your Alexa account and make sure you have at least one Alexa voice-controlled device installed like Echo, Echo dot etc.

1. In the upper left corner of Home page, click «=> button to show App menu. Then click "Skills" in
2. Type in Smart Life in the search and click the search button next to it.
3. Enable Smart Life to the skill, then sign in your Smart Life account to complete the account link-
4. After linked account successfully, you can ask Alexa to discover devices. Alexa will show all the discovered devices after 20 seconds.
5. Back to Menu by clicking <> button, and then click «Smart Home> button
6. In Smart Home page, you can group your devices for different categories. Your Smart Life APP has been skilled with Alexa. Now you can control your Smart Lamp through Alexa. After your smart lamp is connected with Alexa successfully, you can simply ask Alexa set your lamp like this:
 - Alexa(or echo), set [bedroom light) to 50 percent.
 - Alexa(or echo), increase [bedroom light) to 50 percent.
 - Alexa(or echo), set [kitchen light) to blue.

Warm Tips

1. Please check whether the device is connected with power and your phone is connected with Wi-Fi.

2. Check routers: If the router is dual-band router. please select a 2.4GHz network to add device . You also need to open the router broadcasting function.
3. Set up the wireless router: Set encryption method as WPA2-PSK authorization type as AES, or set both as auto. the Wireless mode cannot be only 5GHz.please name router WiFi in English. In order to stay strong WiFi signal, please keep device and router within a certain distance.
4. Check whether connected devices have reached the Maximum number router connection. If so. please try to turn off the WiFi connection of some
5. Make sure router wireless MAC filtering function is enabled.
6. Remove the device from the filter list and make sure that router is not prohibiting device from connection.
7. Make sure the entered password is correct when adding a new device.

Warranty

Please feel free to contact us when you have any product problem or suggestions. We take care of all quality - related issues with a REPLACEMENT OR FULL REFUND.

Documents / Resources

	CHIPHY F1013 LED Magic Color Floor Lamp [pdf] User Manual F1013 LED Magic Color Floor Lamp, F1013, LED Magic Color Floor Lamp, Magic Color Floor Lamp, Color Floor Lamp, Floor Lamp, Lamp
---	---

References

- [C Chiphylighting](#)
- [User Manual](#)

[Manuals+](#), [Privacy Policy](#)

This website is an independent publication and is neither affiliated with nor endorsed by any of the trademark owners. The "Bluetooth®" word mark and logos are registered trademarks owned by Bluetooth SIG, Inc. The "Wi-Fi®" word mark and logos are registered trademarks owned by the Wi-Fi Alliance. Any use of these marks on this website does not imply any affiliation with or endorsement.