

CHIPHY F1001 Remote Timer LED Floor Lamp



CHIPHY F1001 Remote Timer LED Floor Lamp Installation Guide

[Home](#) » [CHIPHY](#) » CHIPHY F1001 Remote Timer LED Floor Lamp Installation Guide 

Contents

- [1 CHIPHY F1001 Remote Timer LED Floor Lamp](#)
- [2 Product Information](#)
- [3 Product Usage Instructions](#)
- [4 EXPLODED VIEW](#)
- [5 KEY FUNCTION DESCRIPTION](#)
- [6 REMOTE CONTROL](#)
- [7 SPECIFICATION](#)
- [8 INSTALLATION](#)
- [9 Documents / Resources](#)
 - [9.1 References](#)
- [10 Related Posts](#)

CHIPHY®

CHIPHY F1001 Remote Timer LED Floor Lamp



Product Information

Specifications

- Height options: 69, 54, Dx3 38, 22 inches
- Item No.: F1001 RF01-002 D9.2*H69.3 inch Aluminum / Steel / PC
- CCT: 3000lm 2300K-6500K Ra95 50000h
- Key Function Description: Touch Panel Memory function

Product Usage Instructions

Key Functions

The product comes with a touch panel and various key functions:

- **UP:** Short-press for brightness up 10 levels, Long-press for maximize brightness, Double click for the color temperature up 10 levels.
- **DOWN:** Short-press for brightness down 10 levels, Long-press for minimum brightness, Double click for the color temperature down 10 levels.
- **ON/OFF:** Short-press to turn on/off, Long-press to enter the night light when light off, Long-press to turn off in 45 minutes when light on, Double-press to turn off in 1 minute when light on.
- **Timing:** Short-press with both fingers to select the timing mode (Red-Green-Blue-None, Red 4h/Green 8h/Blue 12h/None No timing state).

Timing Setting

To set the timing for the lamp:

1. Short-press the **Timing** key with both fingers.
2. Select the desired timing mode by cycling through the options using the **UP** and **DOWN** keys.
3. After the time setting is completed, the corresponding timing indicator will turn on, indicating that the lamp is in the corresponding timing state.
4. If you don't cancel the timing setting, it will work every day.

Cancel Timing

To cancel the timing setting:

- Press the **Cancel Timing** key with both fingers at the same time to switch the color of the timing indicator to none; the timing setting is canceled.
- You can also cancel the timing function through the remote control or by cutting off the power supply of the lamp.

Remote Control

The product comes with a remote control for convenient operation. Please face the control panel directly when using the remote control.

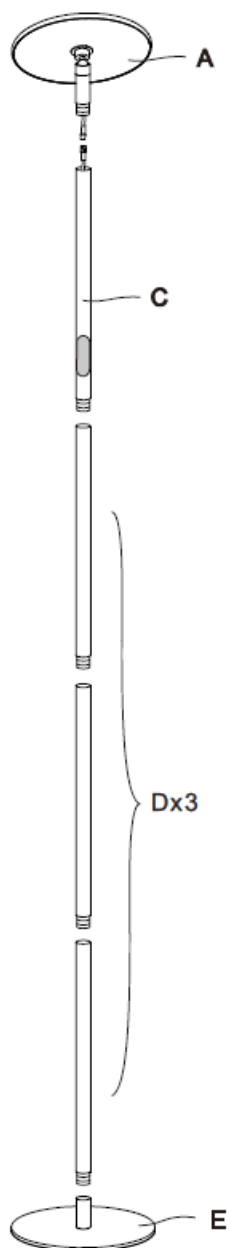
- **ON/OFF**: Press to turn the lamp on/off.
- **BRIGHTNESS +**: Press to increase brightness (10 levels). Long press to maximize brightness.
- **COLOR TEMPERATURE -**: Press to decrease color temperature (10 levels). Long press to set to 2300K.
- **BRIGHTNESS -**: Press to decrease brightness (10 levels). Long press to minimize brightness.
- **OFF IN 1 MINUTE**: Press to turn off the lamp after 1 minute.
- **CANCEL TIMING**: Press to cancel the timing setting.
- **COLOR TEMPERATURE +**: Press to increase color temperature (10 levels). Long press to set to 6500K.
- **OFF IN 45 MINUTES**: Press to turn off the lamp after 45 minutes.
- **TIMER**: Use for timing settings (Red 4h/Green 8h/Blue 12h/None No timing state).

FAQ (Frequently Asked Questions)

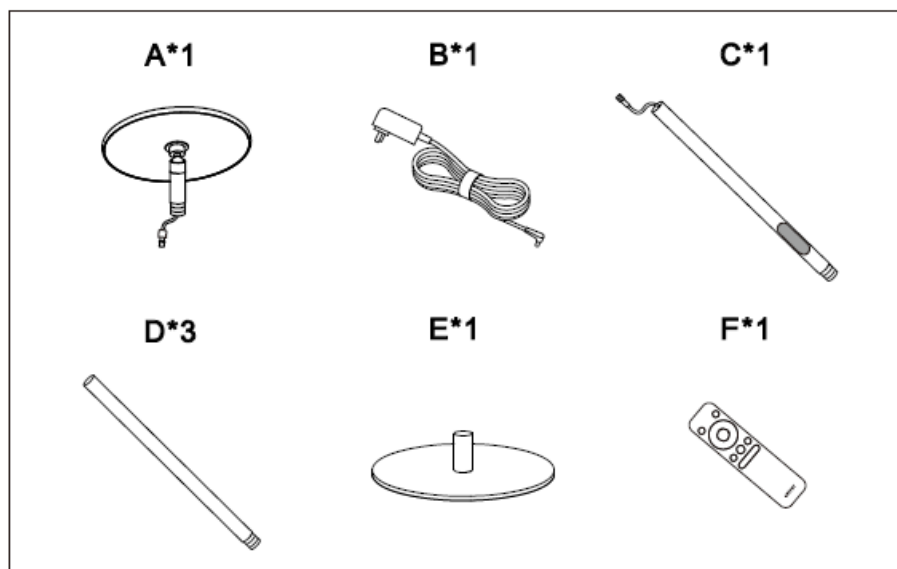
- Q: How do I change the brightness level?
A: Use the **UP** and **DOWN** keys to adjust the brightness. Short-press to change the brightness by 10 levels, and long-press to set it to maximum or minimum brightness.
- Q: How do I change the color temperature?
A: Use the **UP** and **DOWN** keys to adjust the color temperature. Short-press to change the color temperature by 10 levels, and long-press to set it to a specific value such as 2300K or 6500K.
- Q: How do I set the timer for the lamp?
A: Use the **Timing** key with both fingers to enter the timing mode. Then, use the **UP** and **DOWN** keys to cycle through the timing options. Once you have selected the desired timing mode, the corresponding timing indicator will turn on.
- Q: How do I cancel the timing setting?

A: Press the **Cancel Timing** key with both fingers at the same time to switch the timing indicator to none.
Alternatively, you can cancel the timing function through the remote control or by cutting off the power supply of the lamp.

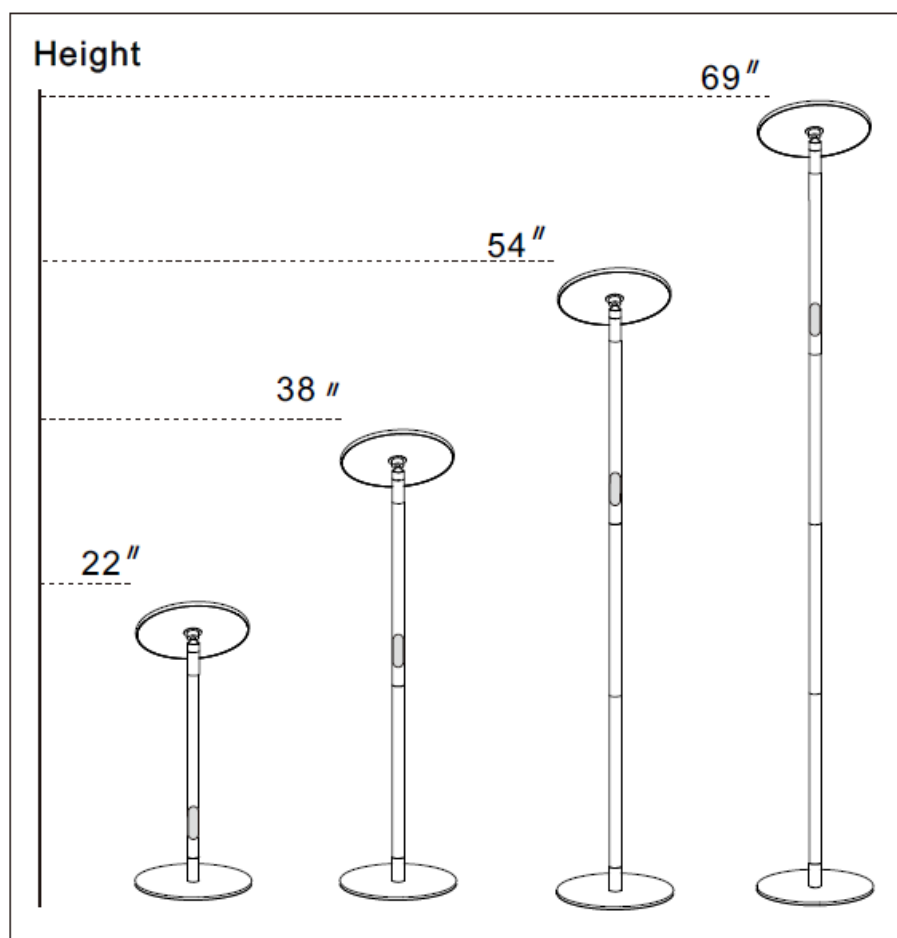
EXPLODED VIEW



Parts

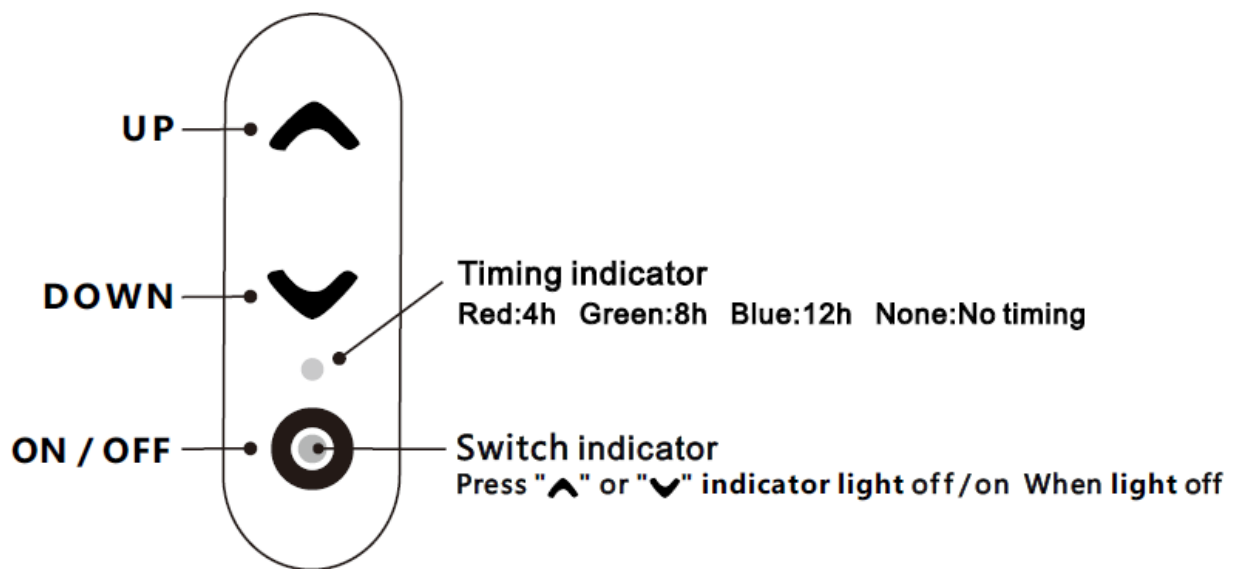


Height options

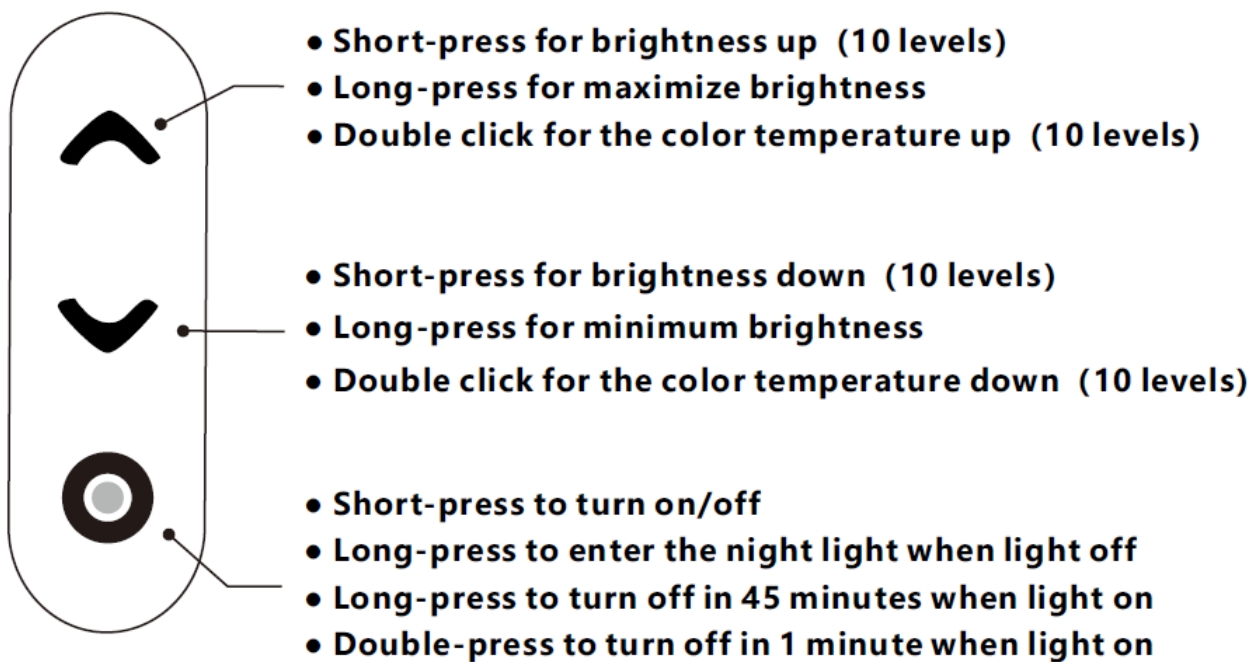


KEY FUNCTION DESCRIPTION

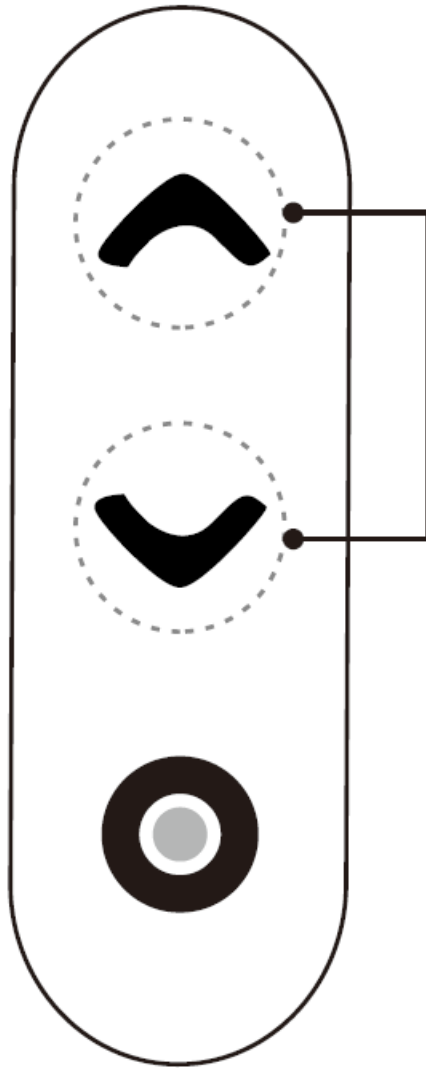
Touch Panel



Key Function Introduction



Timing

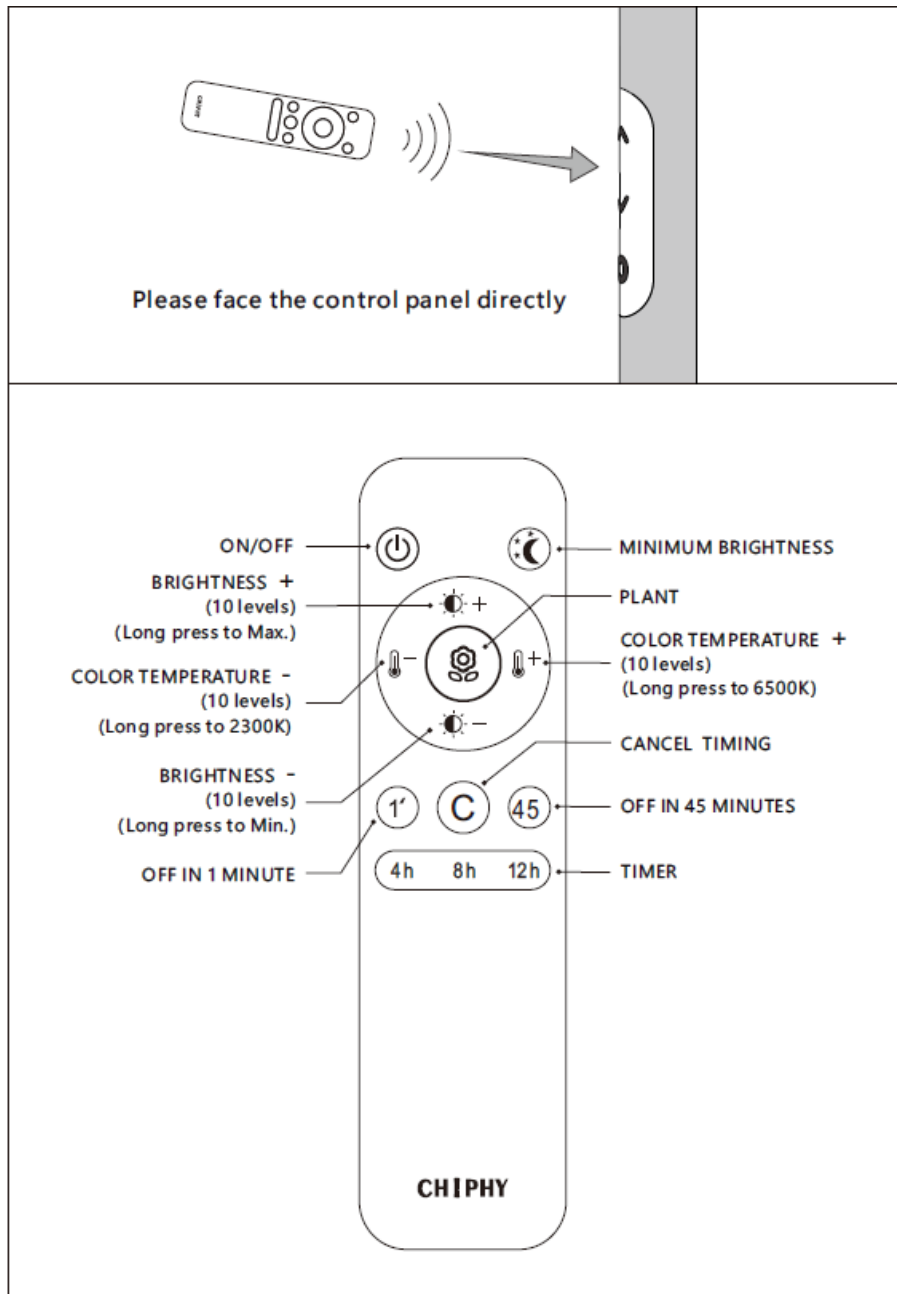


- Short-press " " " " with both fingers, select the timing mode (Red-Green-Blue-None, Red 4h/Green 8h/Blue 12h/None No timing state)
- After the time setting is completed, the corresponding timing indicator is on. It indicates that the lamp is in the corresponding timing state
- If you don't cancel the timing setting, it will always work, every day

Cancel Timing

- Press " " " " with both fingers at the same time to switch the color of timing indicator to none; the timing setting is cancelled
- Or cancel the timing function through the remote control
- Or cut off the power supply of the lamp and cancel the timing setting

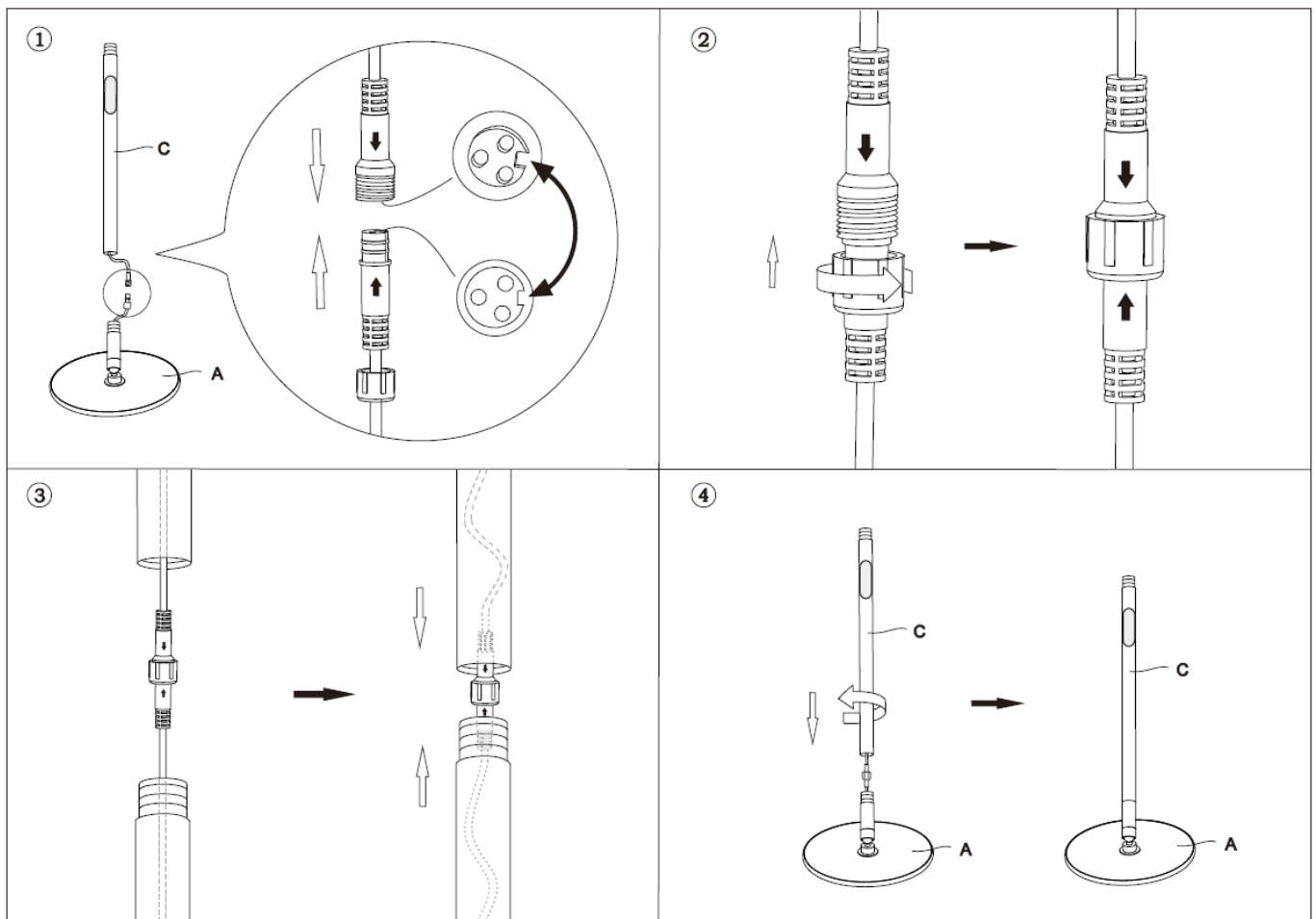
REMOTE CONTROL

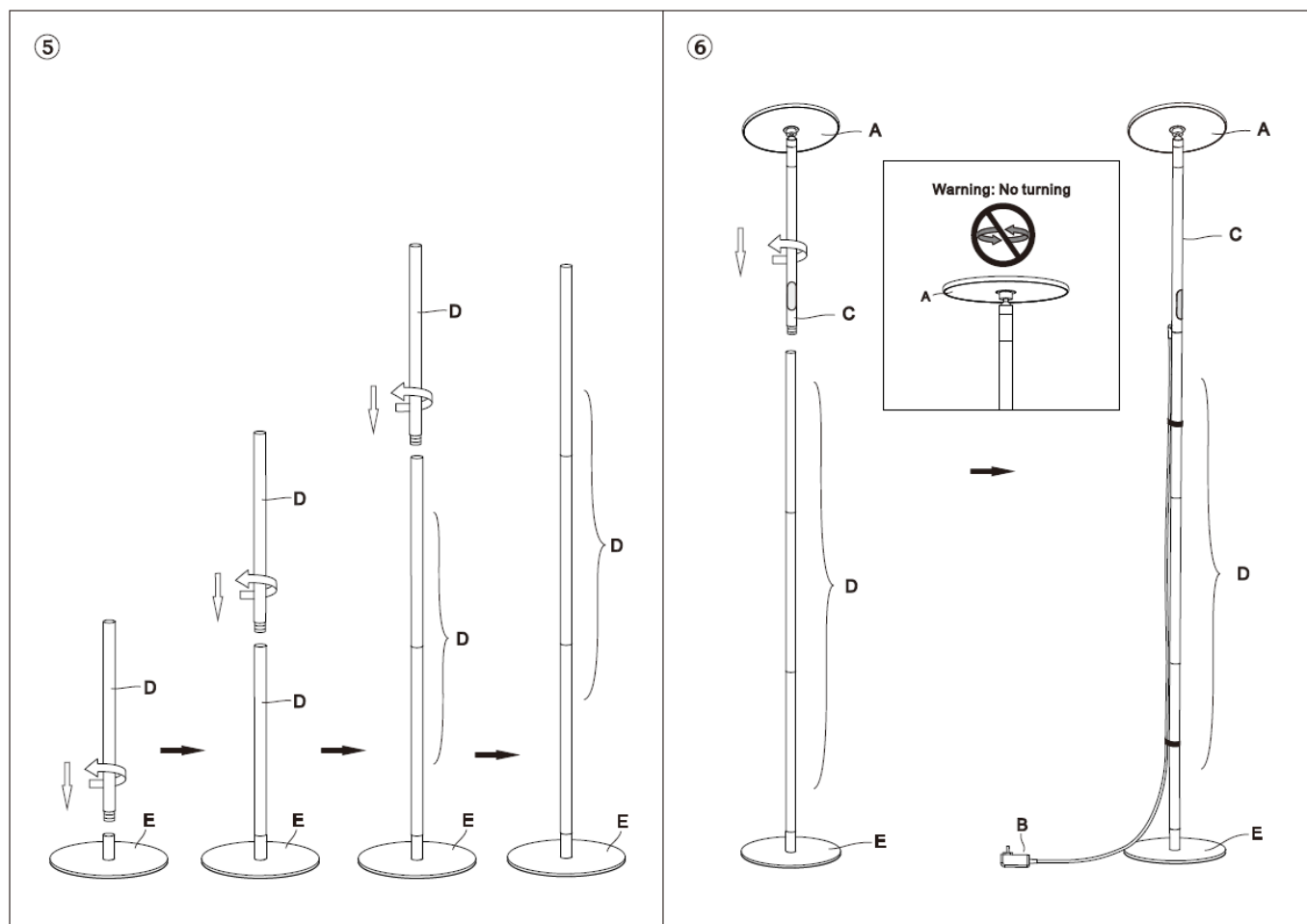


SPECIFICATION

Model	F1001
Item No.	RF01-002
Dimensions	D9.2*H69.3 inch
Material	Aluminum / Steel / PC
Power	40W
Volt	100-240V
Frequency	50/60Hz
Luminous flux	3000lm
CCT	2300K-6500K
CRI	Ra≥95
Lifespan	50000h

INSTALLATION





Designed and made by Chiphy
 Copyright © 2014-2023 Chiphy All Rights Reserved
support@chiphylighting.com
www.chiphylighting.com

Documents / Resources

	<p>CHIPHY F1001 Remote Timer LED Floor Lamp [pdf] Installation Guide F1001, RF01-002, F1001 Remote Timer LED Floor Lamp, Remote Timer LED Floor Lamp, Timer LED Floor Lamp, LED Floor Lamp, Floor Lamp, Lamp</p>
--	--

References

- [User Manual](#)

[Manuals+](#), [Privacy Policy](#)

This website is an independent publication and is neither affiliated with nor endorsed by any of the trademark owners. The "Bluetooth®" word mark and logos are registered trademarks owned by Bluetooth SIG, Inc. The "Wi-Fi®" word mark and logos are registered trademarks owned by the Wi-Fi Alliance. Any use of these marks on this website does not imply any affiliation with or endorsement.