



CHIPHY LIGHTING T1005 SOPHIA LED Magic Color Table Lamp Instruction Manual

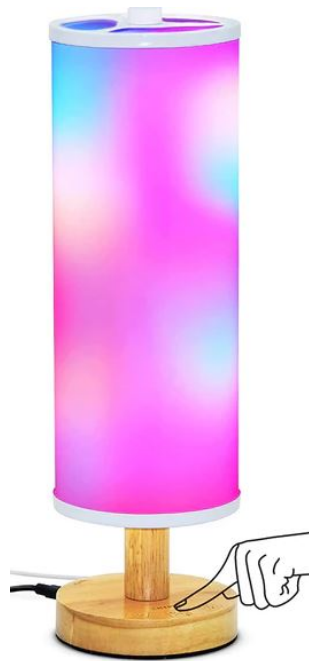
[Home](#) » [CHIPHY LIGHTING](#) » CHIPHY LIGHTING T1005 SOPHIA LED Magic Color Table Lamp Instruction Manual 

Contents

- 1 CHIPHY LIGHTING T1005 SOPHIA LED Magic Color Table Lamp
- 2 Product Information
- 3 Product Usage Instructions
- 4 APP Installation Procedure
- 5 SPECIFICATION
- 6 PARTS IDENTIFICATION GUIDE
- 7 TOUCH CONTROL INSTRUCTIONS
- 8 REMOTE CONTROL INSTRUCTIONS
- 9 FCC Warning:
- 10 Documents / Resources

CHIPHY

CHIPHY LIGHTING T1005 SOPHIA LED Magic Color Table Lamp



Product Information

The product is called SOPHIA and its model number is T1005. It is a table lamp made of wood, plastic, and other materials. The dimensions of the product are D100* 345mm. It has a power of 12W and a voltage of DC 5V with a lifespan of 30000h.

The product comes with two accessories – B and C, and it has touch control instructions for usage. It also has a signal-receiving point for remote control instructions.

Product Usage Instructions

To use the SOPHIA table lamp, follow the below instructions:

1. Place the product in position B or C as per your preference.
2. Connect the Type-C input to turn on or off the lamp.
3. Click once to adjust the brightness level. There are a total of 11 levels available.
4. Long-press to adjust the color temperature.
5. Click to switch to the magic color mode.
6. Long-press to switch to RGB mode.
7. Use the USB output to charge other devices if needed.
8. Use the remote control within the recommended distance for signal reception.

By following these instructions, you can effectively use the SOPHIA table lamp and enjoy its features.

APP Installation Procedure

How to operate:

1. Download "Smart Life" App (two ways to get the APP)

- A. By scan QR code.



B. Search " Smart Life " by Google play (for Android system).

Search " Smart Life " by APP store (for Apple-iOS).

2. Register and sign in APP

A. Run the APP.

B. Login with your account & password, For the first time using, you have to register a new account.

3. Configuration

- A. Power the WIFI LED Lamp. If you don't configuration it is a normal LED lamp.
- B. How to connect to WiFi:
 - 1) If no network is configured, the white light flashes for 18 seconds and prompts to configure the network when powering on the device.
 - 2) You can use App configured network within 3 minutes after powering on the device.
 - 3) The product can be reset and the network can be cancelled after power on and off for 5 consecutive times.
- C. Open the " Smart Life " APP, Click on the button "+" Select the WIFI network and enter the password (if applicable). Tap "next" (Note: Currently does not support 5G band WiFi network).
- D. The app proceeds through the configuration process. Once connected, the "Add successfully" message appears (The name of the smart lamp in the app is "ZF-Magic-T5").
- E. If you select "AP mode" after Clicking the "Add devices, you need go to WiFi settings and connected to the hotspot, After connecting, search WiFi router (no password). The device is connected.

How to connect Smart Lamp to Alexa

1. Launch Smart Life App, sign in your account, and make sure Smart Lamp is in the device list.
 2. Modify device names so that Alexa can easily recognize them, such as: Living Room Light, Bedroom Light, etc.
 3. Minimize Smart Life APP, then launch the Alexa App and sign in your Alexa account and make sure you have at least one Alexa voice-controlled device installed like Echo, Echo dot, etc.
 4. In the upper left corner of Home page, click <=> button to show App menu. Then click "Skills" in the menu.
 5. Type in Smart Life in the search and click the search button next to it.
 6. Enable Smart Life to the skill, then sign in your Smart Life account to complete the account linking.
 7. After linking the account successfully, you can ask Alexa to discover devices. Alexa will show all the discovered devices after 20 seconds.
 8. Back to Menu by clicking <=> button, and then click <Smart Home> button
 9. In the Smart Home page, you can group your devices for different categories. Your Smart Life APP has been skilled with Alexa. Now you can control your Smart Lamp through Alexa.
- After your smart lamp is connected with Alexa successfully, you can simply ask Alexa set your lamp like this:

- Alexa(or echo),set [bedroom light] to 50 percent.
- Alexa(or echo), increase [bedroom light] to 50 percent.
- Alexa(or echo),set [kitchen light] to blue.

Warm Tips:

1. Please check whether the device is connected with power and whether your phone is connected with Wi-Fi.
2. Check routers: If the router is dual-band router, please select a 2.4GHz network to add device . You also need to open the router broadcasting function.
3. Set up the wireless router: Set the encryption method as WPA2-PSK authorization type as AES, or set both as auto. the Wireless mode cannot be only 5GHz.please name router WiFi in English. In order to stay strong WiFi signal, please keep device and router within a certain distance.
4. Check whether connected devices have reached the Maximum number router connection. If so. please try to turn off the WiFi connection of some devices.
5. Make sure router wireless MAC filtering function is enabled.
6. Remove the device from the filter list and make sure that router is not prohibiting device from connecting.
7. Make sure the entered password is correct when adding a new device.




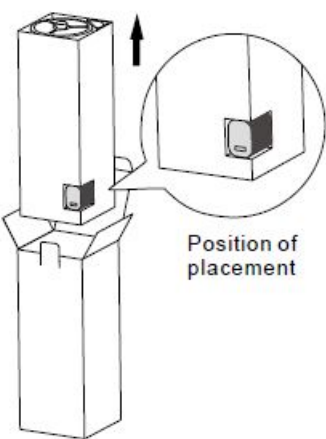
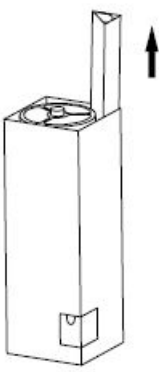
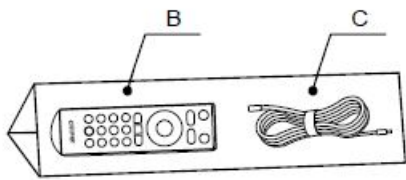
Warranty

Please feel free to contact us when you have any product problems or suggestions. We take care of all quality-related issues with a REPLACEMENT OR FULL REFUND.

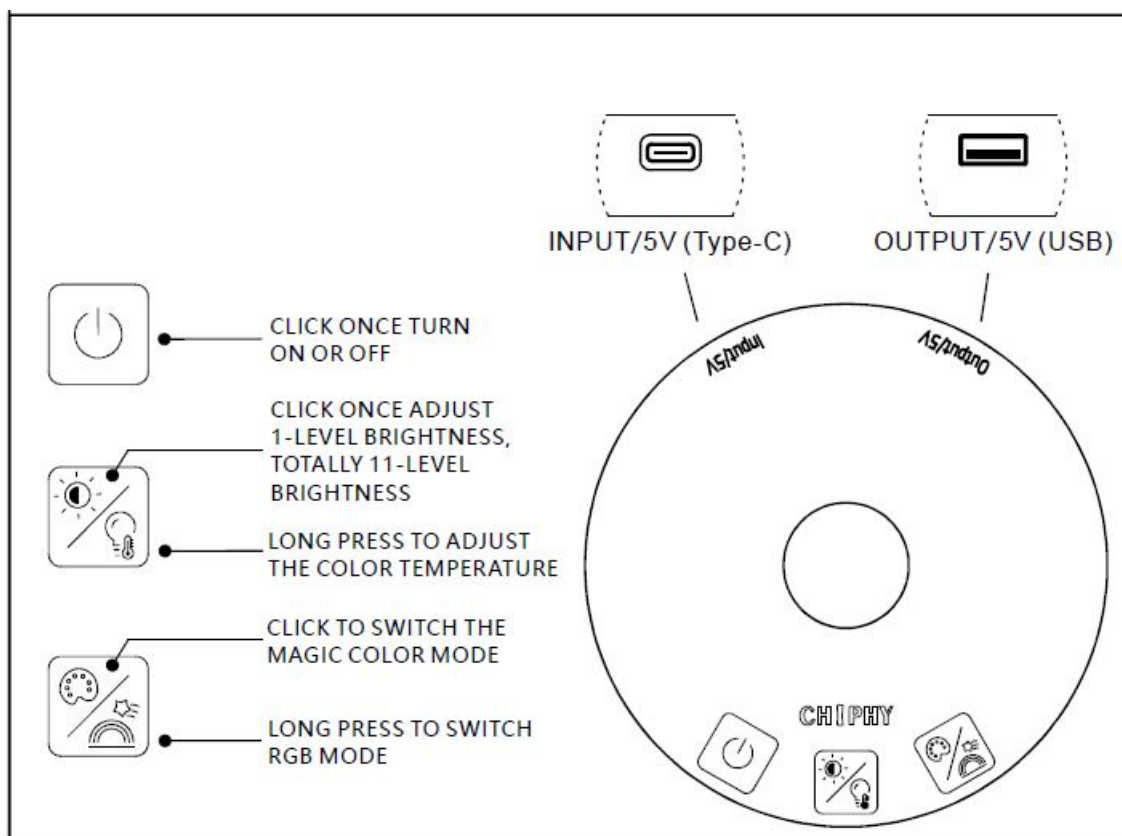
SPECIFICATION

MODEL	T1005
DIMENSIONS	D100* 345mm
MATERIAL	Wood/Plastic/Metal
POWER	12W
VOLT	DC 5V
LIFESPAN	30000h

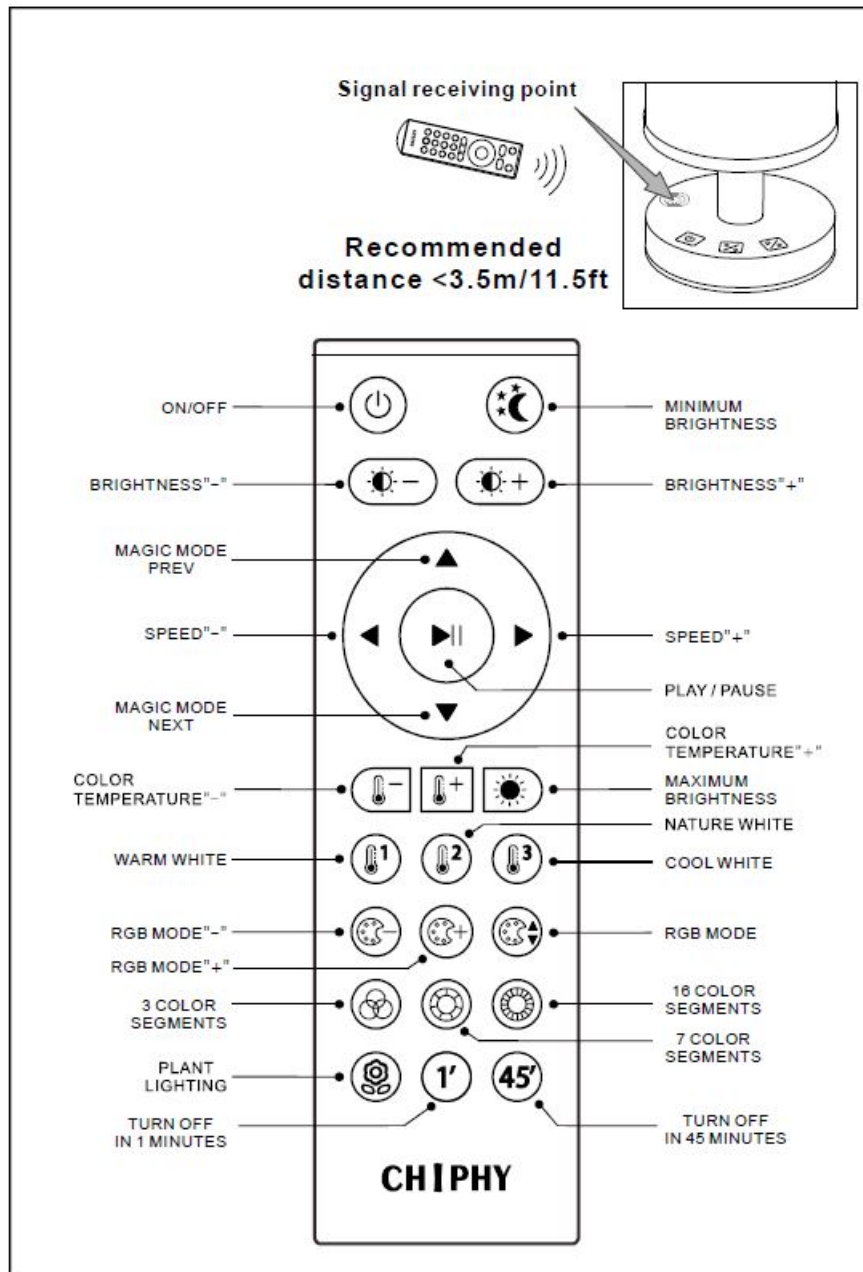
PARTS IDENTIFICATION GUIDE

Accessories		
A*1	B*1	C*1
		
 <p>Position of placement</p>	 <p>Position of placement</p>	 <p>Position of placement</p>

TOUCH CONTROL INSTRUCTIONS



REMOTE CONTROL INSTRUCTIONS



FCC Warning:

This equipment has been tested and found to comply with the limits for a Class B digital device, pursuant to part 15 of the FCC Rules. These limits are designed to provide reasonable protection against harmful interference in a residential installation. This equipment generates, uses and can radiate radio frequency energy and, if not installed and used in accordance with the instructions, may cause harmful interference to radio communications. However, there is no guarantee that interference will not occur in a particular installation. Suppose this equipment does cause harmful interference to radio or television reception, which can be determined by turning the equipment off and on. In that case, the user is encouraged to try to correct the interference by one or more of the following measures:

- Reorient or relocate the receiving antenna.
- Increase the separation between the equipment and the receiver.
- Connect the equipment into an outlet on a circuit different from that to which the receiver is connected.
- Consult the dealer or an experienced radio/TV technician for help.

Caution: Any changes or modifications to this device not explicitly approved by the manufacturer could void your authority to operate this equipment.

This device complies with part 15 of the FCC Rules. Operation is subject to the following two conditions:

- 1. This device may not cause harmful interference, and
- 2. this device must accept any interference received, including interference that may cause undesired operation.

This equipment complies with FCC radiation exposure limits set forth for an uncontrolled environment. This equipment should be installed and operated with a minimum distance 20cm between the radiator and your body.

Documents / Resources

	CHIPHY LIGHTING T1005 SOPHIA LED Magic Color Table Lamp [pdf] Instruction Manual T1001, T1005, SOPHIA LED Magic Color Table Lamp, T1005 SOPHIA LED Magic Color Table Lamp, LED Magic Color Table Lamp, Color Table Lamp, Magic Color Table Lamp, Table Lamp, Lamp
---	---