




CHIPHY LIGHTING F2001 Soft Lighting Floor Lamp Installation Guide

[Home](#) » [CHIPHY LIGHTING](#) » CHIPHY LIGHTING F2001 Soft Lighting Floor Lamp Installation Guide 

CHIPHY LIGHTING

Installation Guide



F2001 Soft Lighting Floor Lamp

Contents

- [1 F2001 Soft Lighting Floor Lamp](#)
- [2 Installation Notes:](#)
- [3 Maintenance of lampshade:](#)
- [4 Light source power:](#)
- [5 Package Included:](#)
- [6 Documents / Resources](#)
 - [6.1 References](#)

F2001 Soft Lighting Floor Lamp

Article name	SOFTLIGHTING Floor Lamp
Modle	F2,001
Item NO.	SF213-107
Material	Tyvek(Dupont),Stainless Steel
Assembly	Collapsible
Style	Contemporary,Modern
Scenario	Living room/Bedroom/Game room/Study room
Shade Color	White / Brown Gradient / Purple Gradient Pink Gradient/Mable
Electric Cord	98 inches, foot switch
Lamp holder	E26/27×2
Power	MAX.60W x2

Installation Notes:

The installation process should be strictly followed by the installation procedure and care should be taken not to require any heavy-force operation. In particular, the installation of gasket and spring in steps 9 and 10 should be taken care to place them under the stents of the lamp cover. Please ensure that the connection between the tubes are correct and tightened tightly.

Maintenance of lampshade:

There may be wrinkles since it is in a combined folded state when you receive it. Please don't worry. After properly installed, the pull wrinkle supported by the light stand will be reduced or even eliminated. It is made of Tyvek (non-woven fabric), which is not easy to deform, waterproof and mildew-proof, and can be wiped with a damp cloth with an appropriate amount of detergent.Also keep an eye out for your pets, they may be very interested in this fabric!

Light source power:

Max. 60W*2; LED bulb (5~20W) *2.

Package Included:

lampshade*1, supporting tubes and electric appliances suite*1 (tube A,B,C), the accessories bag*1 (ball screw pipe(long)*1, screw pipe(short)*1, spring*1, gasket*1, foot *4, tie*1), bulb*2.

Warning:

CAUTION: RISK OF FIRE – USE MAX 2*60W, 120V.

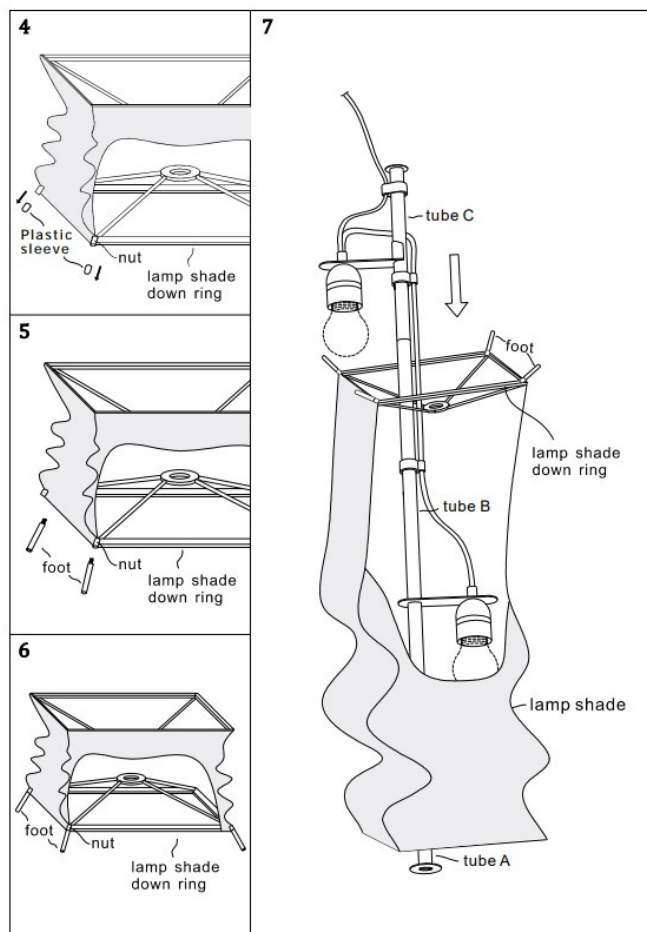
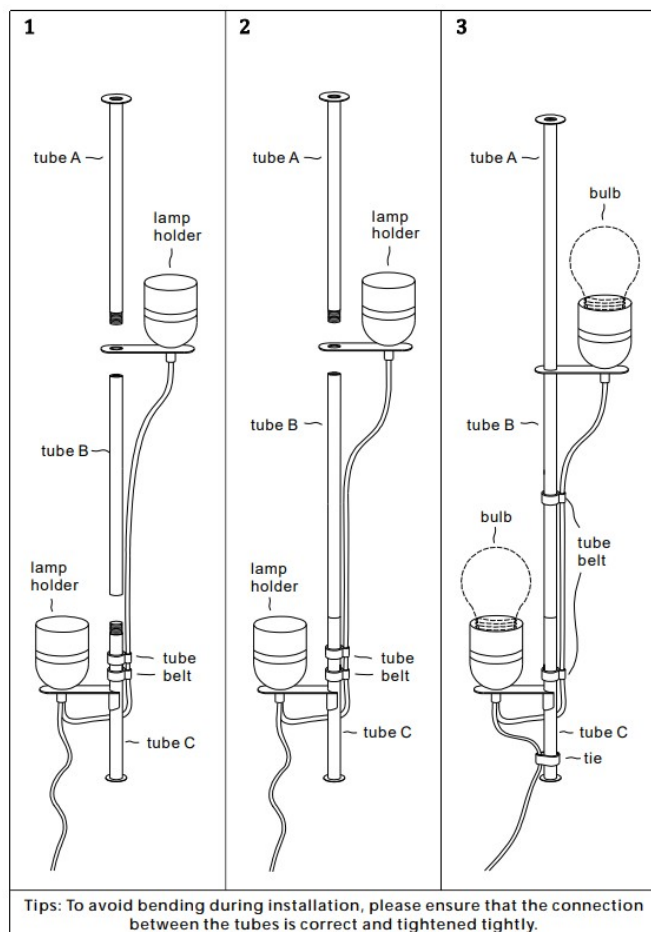
ATTENTION: RISQUE D'INCENDIE – UTILISEZ MAX 2*60W,120V.

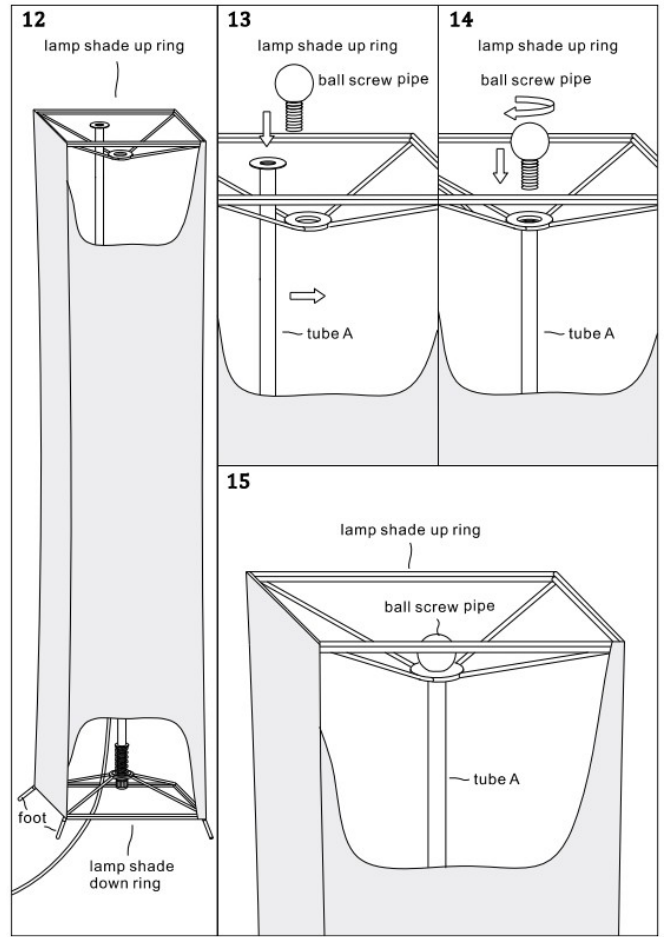
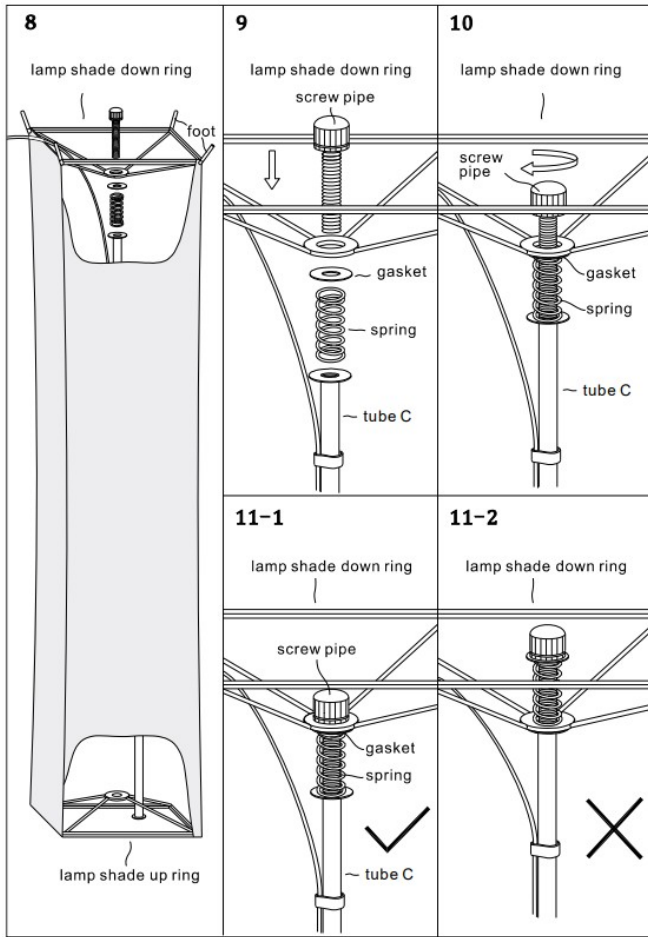
DRY LOCATIONS ONLY

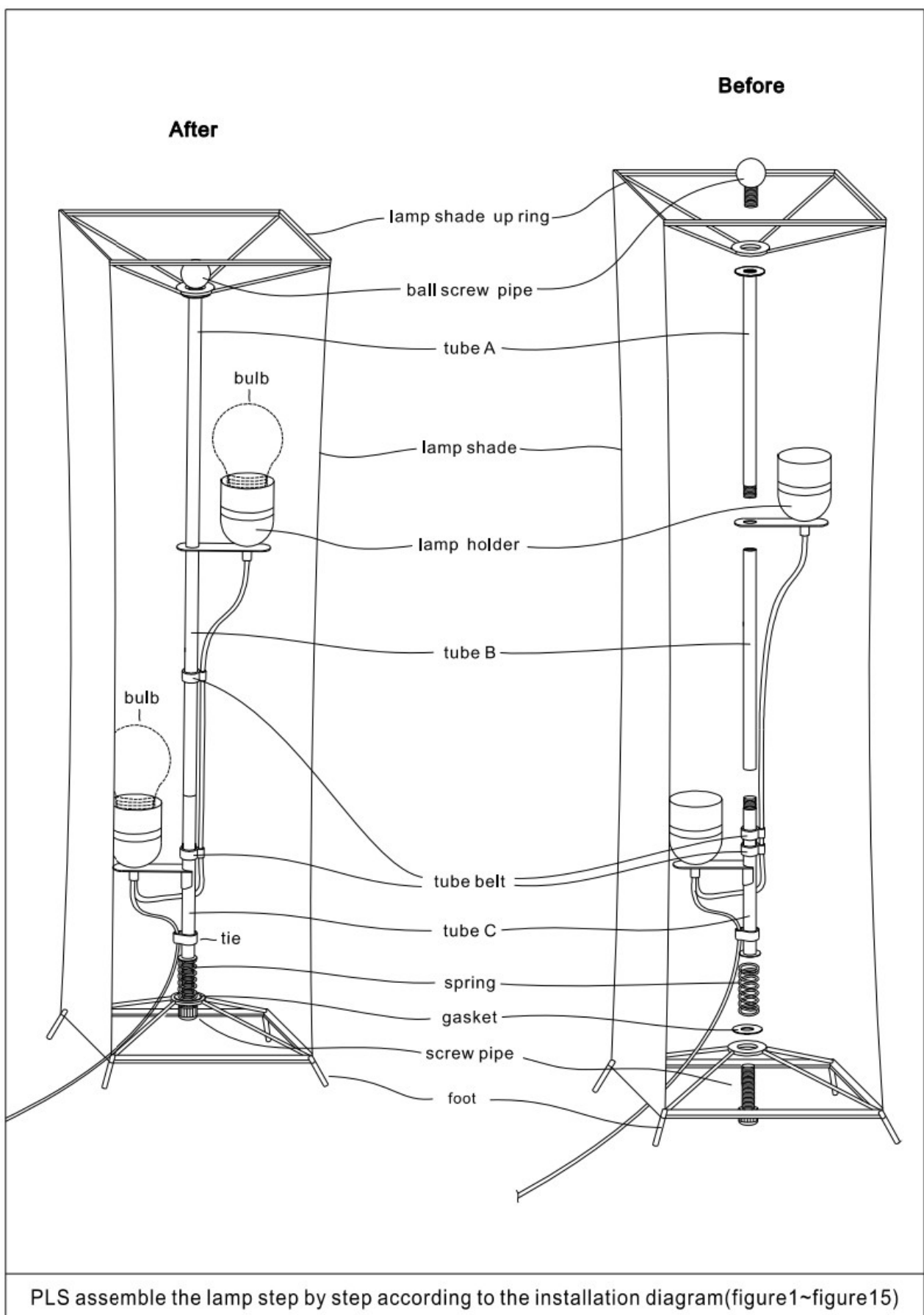
POUR EMPLACEMENTS SECS SEULEMENT

HOUSE HOLD USE

POUR V'USAGE A LA MAISON







PLS assemble the lamp step by step according to the installation diagram (figure 1~figure 15)

Documents / Resources

	<p>CHIPHY LIGHTING F2001 Soft Lighting Floor Lamp [pdf] Installation Guide F2001, F2001 Soft Lighting Floor Lamp, Soft Lighting Floor Lamp, Lighting Floor Lamp, Floor L amp, Lamp</p>
---	---

References

- [User Manual](#)