



CHiME Note X Smart AI Powered Recorder and Live Translator User Manual

[Home](#) » [chime](#) » CHiME Note X Smart AI Powered Recorder and Live Translator User Manual 



Note

Please read this manual before using this product and save it for future reference.

Contents

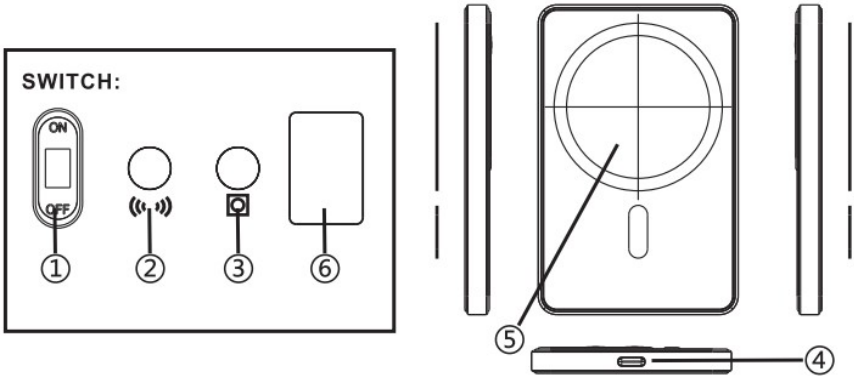
1 FUNCTIONAL

DIAGRAM:

2 Documents / Resources

2.1 References

FUNCTIONAL DIAGRAM:



1. Power switch key
2. Charging switch
3. Recording switch

4. Type-C charging port/file reading
5. Magsafe
6. OLED display

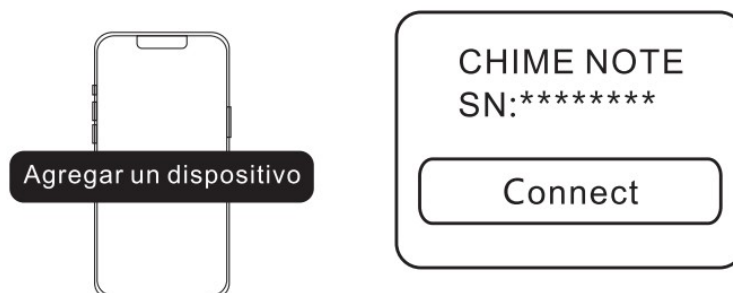
1. Search [CHIME] in App Store or Google play to find the application



2. When you start using it, first push the power switch upward. When the device is turned on, you can connect it to the APP via Bluetooth.

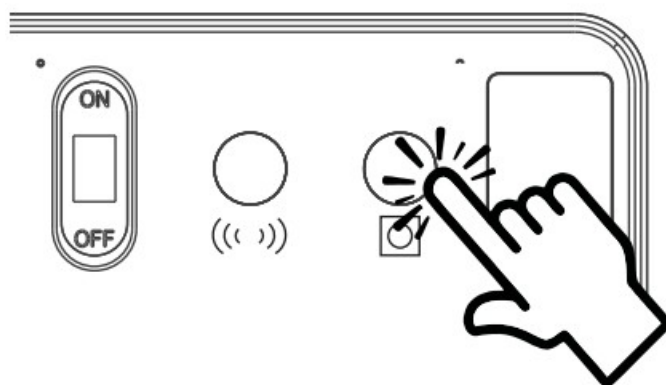


3. Click to search for the device in the APP and you can connect to the device.



After the connection is successful, the device status and other information will be displayed in the APP.

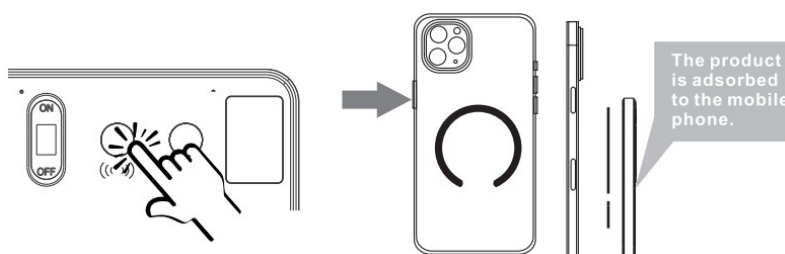
4. When the device is connected to the APP, click the recording button, and it will be linked to the APP for recording.



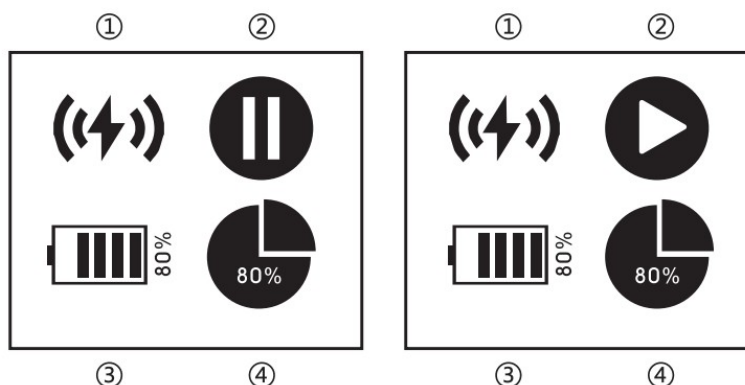
After recording, click the recording button again, the audio recording will end, and the audio will be automatically saved to the APP.

5. IPHONE recording scene

1. When you need to use the charging function, you only need to click the charging button once. A charging lightning icon will appear on the screen next to it, which means that the device is outputting. Stick the device on the back of the IPHONE to wirelessly charge. After using the charging function, you need to click again until the lightning icon on the screen disappears



2. Special note: When the battery is lower than 30%, to ensure that the device can maintain normal recording function. The lightning icon on the screen will become another icon. as the picture shows. (⚡) When the battery level is higher than 30%, the icon returns to normal.



1. Charging icon
2. Recording icon

3. Battery remaining icon
4. Memory remaining icon

This device complies with part 15 of the FCC Rules. Operation is subject to the following two conditions: (1) This device may not cause harmful interference, and (2) this device must accept any interference received, including interference that may cause undesired operation.

Any Changes or modifications not expressly approved by the party responsible for compliance could void the user's authority to operate the equipment.

Note: This equipment has been tested and found to comply with the limits for a Class B digital device, pursuant to

part 15 of the FCC Rules. These limits are designed to provide reasonable protection against harmful interference in a residential installation. This equipment generates uses and can radiate radio frequency energy and, if not installed and used in accordance with the instructions, may cause harmful interference to radio communications. However, there is no guarantee that interference will not occur in a particular installation. If this equipment does cause harmful interference to radio or television reception, which can be determined by turning the equipment off and on, the user is encouraged to try to correct the interference by one or more of the following measures:

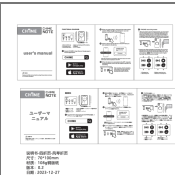
- Reorient or relocate the receiving antenna.
- Increase the separation between the equipment and receiver.
- Connect the equipment into an outlet on a circuit different from that to which the receiver is connected.
- Consult the dealer or an experienced radio/TV technician for help.

FCC Radiation Exposure statement

“The FCC certification of this device refers to RF exposure testing performed in typical operating conditions, where a person is no closer than 0cm centimeters from the device surface at all times, except for non-repetitive patterns with transient time intervals in the order of a second. Only in the stated conditions, the device is shown to fully comply with the FCC RF Exposure requirements of KDB 447498.”



Documents / Resources

	<p>CHiME Note X Smart AI Powered Recorder and Live Translator [pdf] User Manual 2BFHH-OBSL1, 2BFHHOBSL1, obsl1, Note X Smart AI Powered Recorder and Live Translator, Note X, Note X Live Translator, Note X Smart AI Powered Recorder, Smart AI Powered Recorder and Live Translator</p>
---	---

References

- [User Manual](#)

[Manuals+](#), [Privacy Policy](#)

This website is an independent publication and is neither affiliated with nor endorsed by any of the trademark owners. The "Bluetooth®" word mark and logos are registered trademarks owned by Bluetooth SIG, Inc. The "Wi-Fi®" word mark and logos are registered trademarks owned by the Wi-Fi Alliance. Any use of these marks on this website does not imply any affiliation with or endorsement.