

**CHILITEC**

CHILITEC BEA13B  
Retractable  
Socket Tower



# CHILITEC BEA13B Retractable Socket Tower Instruction Manual

[Home](#) » [CHILITEC](#) » CHILITEC BEA13B Retractable Socket Tower Instruction Manual 

## Contents

- [1 CHILITEC BEA13B Retractable Socket Tower](#)
- [2 Intended use](#)
- [3 Description of symbols](#)
- [4 Safety instructions](#)
- [5 USB port protection](#)
- [6 Installation](#)
- [7 Cleaning and care](#)
- [8 Disposal](#)
- [9 Technical Data](#)
- [10 Documents / Resources](#)
  - [10.1 References](#)
- [11 Related Posts](#)

**CHILITEC**

**CHILITEC BEA13B Retractable Socket Tower**



## Intended use

- The product is a retractable socket tower. The number and type of consumers that can be connected will depend on your model.
- The product is retractable and is designed to be flush mounted.
- The product is intended for indoor use only. Do not use it outdoors.
- Contact with moisture must be avoided under all circumstances.
- If you use the product for purposes other than those described, the product may be damaged. Improper use can result in short circuits, fires, electric shocks or other hazards.
- The product complies with the statutory national and European requirements.
- For safety and approval purposes, you must not rebuild and/or modify the product.
- Read the operating instructions carefully and store them in a safe place. Make this product available to third parties only together with the operating instructions.
- All company names and product names are trademarks of their respective owners. All rights reserved.

## Description of symbols

The symbol with the exclamation mark in the triangle is used to indicate important information in this document. Always read this information carefully.

Risk of electric shock!

This product must only be used in dry, enclosed indoor areas. It must not become damp or wet.

Read the operating instructions carefully.

## Safety instructions

Read the operating instructions carefully and especially observe the safety information.

If you do not follow the safety instructions and information on proper handling, we assume no liability for any resulting personal injury or damage to property. Such cases will invalidate the warranty/guarantee.

## General

- The product is not a toy. Keep it out of the reach of children and pets.
- Do not leave packaging material lying around carelessly. This may become dangerous playing material for

children.

- If you have questions which remain unanswered by this information product, contact our technical support service or other technical personnel.

## **Handling**

- If it is no longer possible to operate the product safely, take it out of operation and protect it from any accidental use. Safe operation can no longer be guaranteed if the product:
  - is visibly damaged,
  - is no longer working properly,
  - has been stored for extended periods in poor ambient conditions or
  - has been subjected to any serious transport-related stresses.
  - Handle the product carefully. Jolts, impacts or a fall even from a low height can damage the product.
  - Consult an expert when in doubt about the operation, safety or connection of the appliance.

## **Operating environment**

- Do not place the product under any mechanical stress.
- Protect the appliance from extreme temperatures, strong jolts, flammable gases, steam and solvents.
- Protect the product from high humidity and moisture.
- Protect the product from direct sunlight.

## **Mains cable**

- Do not tamper with power supply components. Risk of death by electric shock!
- Always ensure proper connection.
- Never use damaged power supply components.
- Do not modify power supply components.
- The mains outlet must be located near to the device and be easily accessible.
- Never plug in or unplug the mains plug when your hands are wet.
- Never pull the mains plug from the socket by pulling at the cable. Always pull it from the mains socket using the intended grips.
- Unplug the mains plug from the mains socket if you do not use the device for an extended period of time.
- Disconnect the mains plug from the mains socket in thunderstorms for reasons of safety.

Make sure that the mains cable is not squeezed, bent, damaged by sharp edges or put under mechanical stress.

- Avoid excessive thermal stress on the mains cable from extreme heat or cold.
- Do not modify the mains cable. Otherwise the mains cable may be damaged. A damaged mains cable can cause a deadly electric shock.
- Do not touch the mains cable if it is damaged.
- First, power down the respective mains socket (e.g. via the respective circuit breaker) and then carefully pull the mains plug from the mains socket.
- Never use the product if the mains cable is damaged.

- A damaged mains cable may only be replaced by the manufacturer, a workshop commissioned by the manufacturer or a similarly qualified person, so as to prevent any danger.
- Ensure that cables are not pinched, kinked or damaged by sharp edges.
- Always lay cables so that nobody can trip over or become entangled in them. This poses a risk of injury.

### **Connected devices**

- Also observe the safety and operating instructions of any other devices which are connected to the product.

### **Product**

- Do not connect the product in series!
- Do not operate the product while covered.
- De-energised only when unplugged.
- Take special caution when children are around. Children cannot recognize the danger arising from the incorrect use of electrical devices. There is a risk of a life-threatening electric shock!
- Only use in dry rooms.

### **Sockets**

The product is equipped with an enhanced protection against accidental contact. An integrated mechanism will release the holes of the receptacle only, if the two prongs of a power plug are inserted into the two holes at once.

### **USB port protection**

The USB ports have the following protection: over-current, over-temperature, short circuit. When triggered the power supply to the port(s) will be interrupted.

#### **Preconditions:**

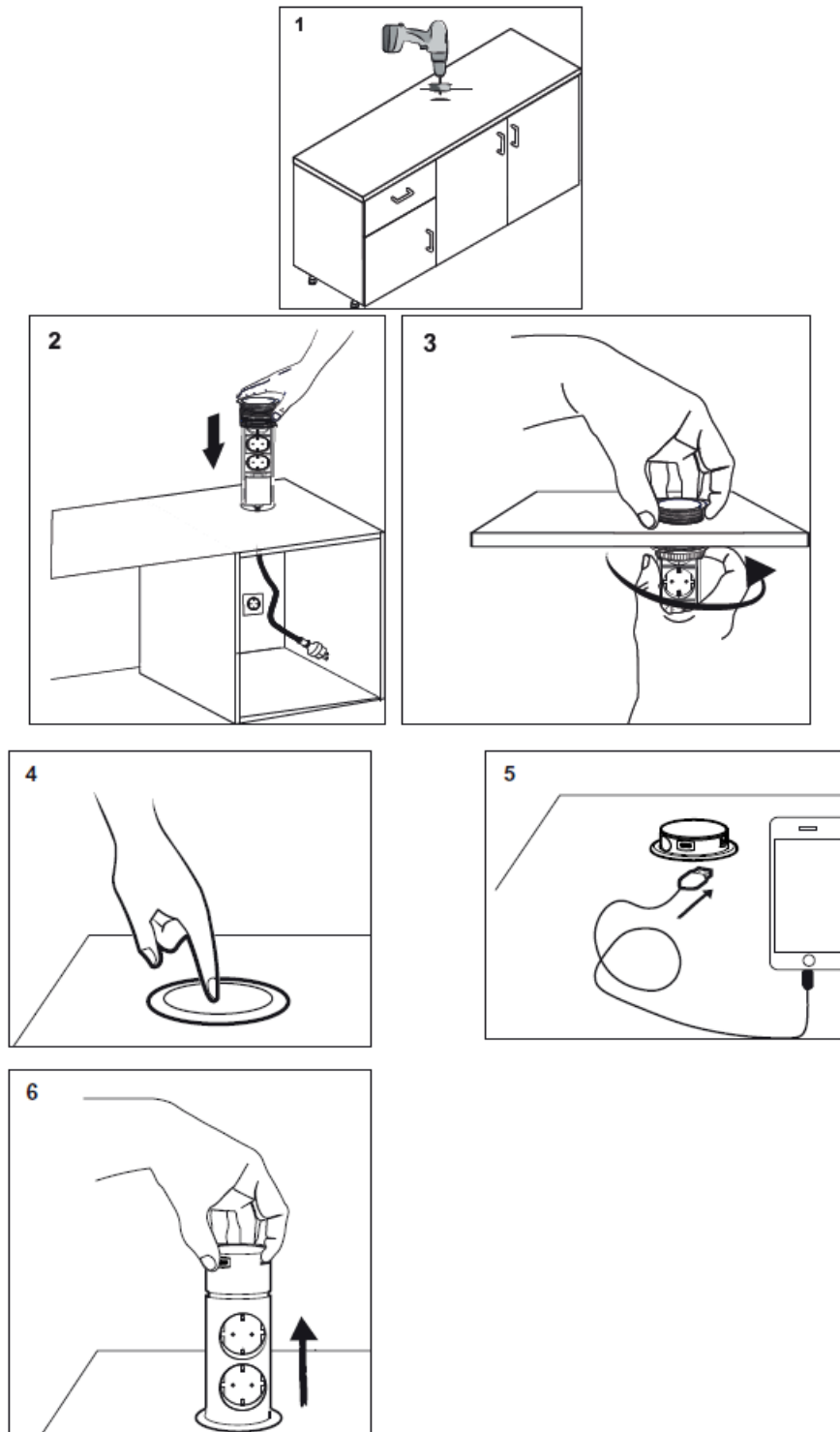
Protection mechanism has been triggered.

1. Disconnect the power supply to the socket.
2. Remove the conditions triggering the protection.
3. Reconnect the power supply to the socket

The power supply will resume when the condition(s) triggering the protection are removed.

### **Installation**

- Drill a hole into the surface:  $\varnothing 60$  mm.
- Do not drill too close to the edge.



## Cleaning and care

### Important:

- Do not use aggressive cleaning agents, rubbing alcohol or other chemical solutions. They damage the housing and can cause the product to malfunction.
- Do not immerse the product in water.

1. Disconnect the product from the power supply.
2. Clean the product with a dry, fibre-free cloth.

## Disposal

This symbol must appear on any electrical and electronic equipment placed on the EU market.

This symbol indicates that this device should not be disposed of as unsorted municipal waste at the end of its service life. Owners of WEEE shall dispose of it separately from unsorted municipal waste. Spent batteries and accumulators, which are not enclosed by the WEEE, as well as lamps that can be removed from the WEEE in a non-destructive manner, must be removed by end users from the WEEE in a non-destructive manner before it is handed over to a collection point.

Distributors of electrical and electronic equipment are legally obliged to provide free take-back of waste.

Conrad provides the following return options free of charge (more details on our website):

- in our Conrad offices
- at the Conrad collection points
- at the collection points of public waste management authorities or the collection points set up by manufacturers or distributors within the meaning of the ElektroG
- End users are responsible for deleting personal data from the WEEE to be disposed of.
- It should be noted that different obligations about the return or recycling of WEEE may apply in countries outside of Germany.

## Technical Data


### Product

- Input ..... 230 V/AC, 50 Hz, 16 A
- Rated power ..... 3680 W
- Cable type ..... H05VV-F 3G1.5 mm<sup>2</sup>
- Cable length ..... 1.5 m
- Enhanced protection against accidental
- contact..... Yes
- Socket controls ..... Mains: always ON
- USB: always ON
- Protection (USB ports)..... Over-current, over-temperature, short circuit
- Consumers ..... 3x mains, 1x USB-A, 1x USB-C®
- Installation hole size ..... Ø60 mm
- Operating conditions..... 0 to +40 °C, <85 % RH (non-condensing)
- Storage conditions..... -20 to +70 °C, <95 % RH (non-condensing)
- Dimensions (Ø x H) ..... 76 x 283 mm

### Data according to EU regulation 2019/1782

Input voltage	230 V/AC
Input AC frequency	50 Hz
Output voltage	USB-A 1: 5.0 V/DC 2.4 A max. 12.0 W
Output current	USB-C® 1: 5.0 V/DC 2.4 A max. 12.0 W USB-A 1+USB-C®
Output power	1: 5.0 V/DC 2.4 A max. 12.0 W
Average active efficiency	83.9 %
Efficiency at low load (10 %)	79.4 %
No-load power consumption	0.08 W

## Documents / Resources

	<p><b><a href="#">CHILITEC BEA13B Retractable Socket Tower</a></b> [pdf] Instruction Manual  554746, 23821, BEA13B Retractable Socket Tower, BEA13B, Retractable Socket Tower, Socket Tower, Tower</p>
---	--

## References

- [User Manual](#)

### Manuals+, Privacy Policy

This website is an independent publication and is neither affiliated with nor endorsed by any of the trademark owners. The "Bluetooth®" word mark and logos are registered trademarks owned by Bluetooth SIG, Inc. The "Wi-Fi®" word mark and logos are registered trademarks owned by the Wi-Fi Alliance. Any use of these marks on this website does not imply any affiliation with or endorsement.