



# CHIGEE MFP0019 External Tire Pressure Sensor Instruction Manual

[Home](#) » [CHIGEE](#) » CHIGEE MFP0019 External Tire Pressure Sensor Instruction Manual 

## CHIGEE MFP0019 External Tire Pressure Sensor



### Contents

- [1 Product Overview](#)
- [2 Installation Guide](#)
- [3 Documents / Resources](#)
  - [3.1 References](#)

## Product Overview

Tire pressure sensor can be easily installed on the tire valve. Connecting with

AIO-5 Lite, tire pressure and tire temperature will display in real time on the AIO-5 Lite, helping to safe driving.

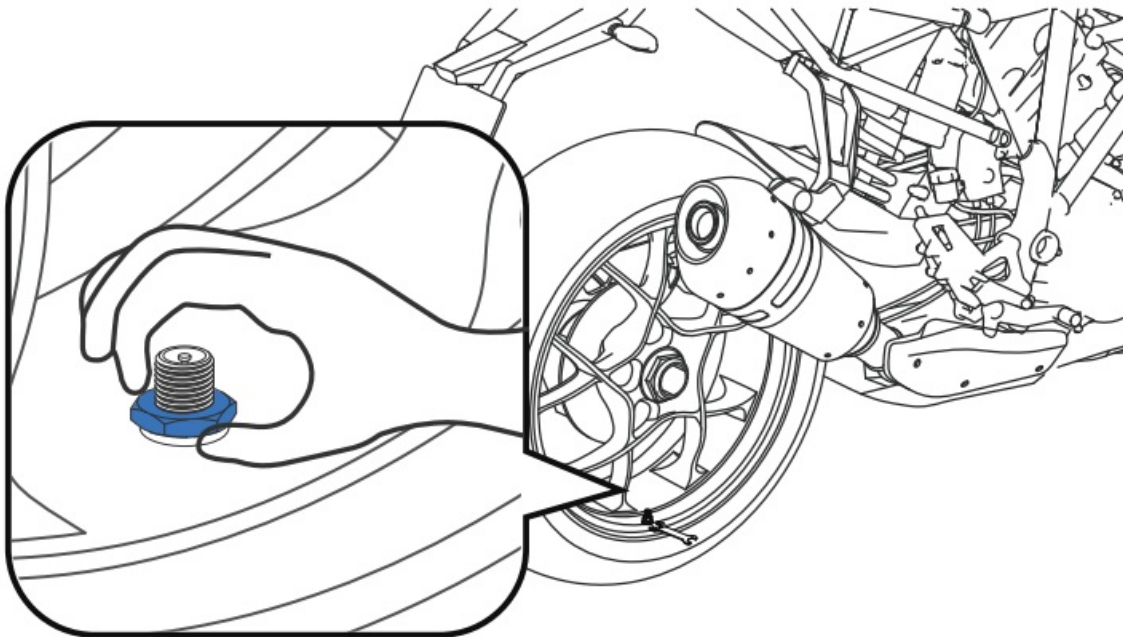


Battery life: 1 year  
battery replacement: BRI 225  
size parameters: 18.2×14.8mm  
measurement accuracy: 0.01 Bar  
pressure measurement range: 0-8Bar

## Installation Guide

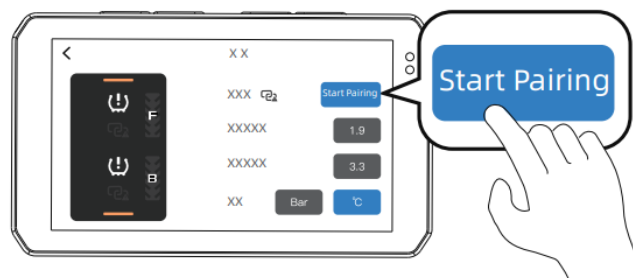
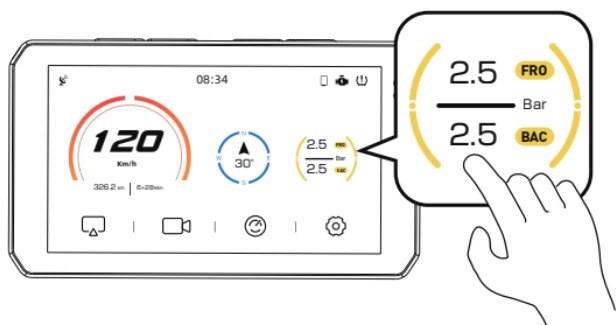
### Pre-installation

Remove valve caps from front & rear wheel, then screw the anti-theft nuts into wheel valve.



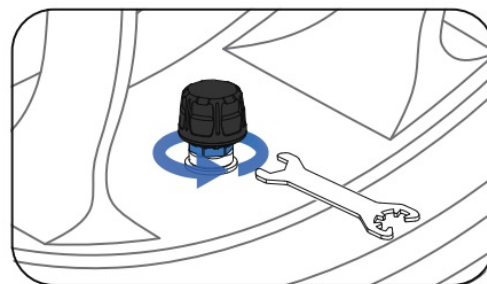
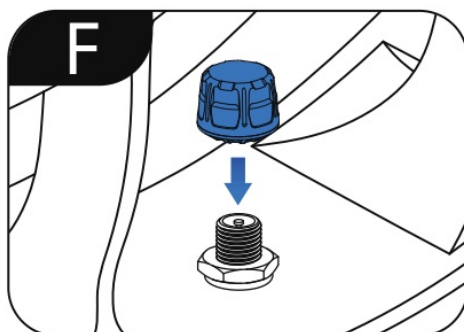
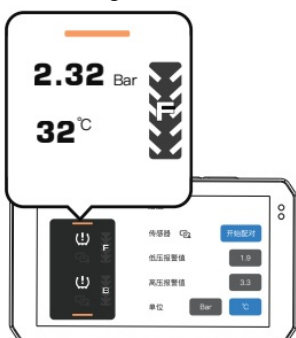
### Step 1

Click the tire pressure data area of AIO-5 lite homepage to enter the tire Pressure page, then click 'Start Pairing'.



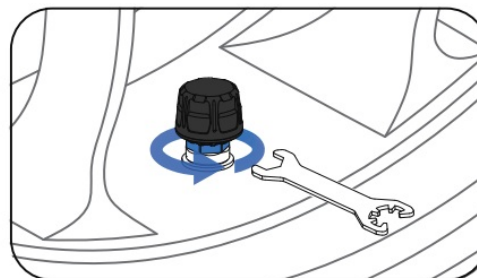
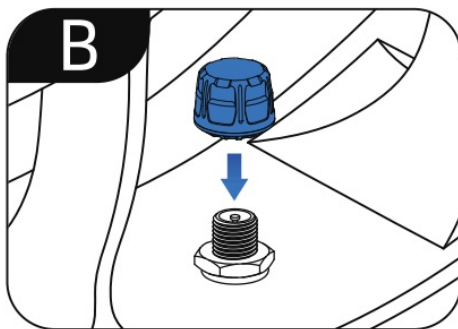
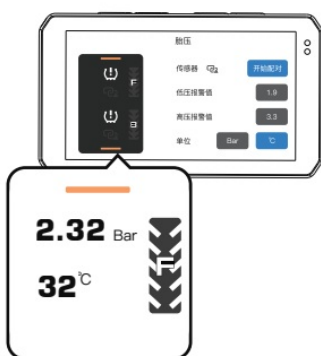
## Step 2

In this moment, the front wheel (F) of the tire pressure data page starts to flash, please screw any tire pressure sensor into the front wheel nozzle quickly; when the value appears in the front wheel window, the pairing is completed. Tighten the anti-theft nut counterclockwise with the supplied wrench to prevent the sensor loosening and falling.



## Step 3

When the rear wheel (R) of the tire pressure data page starts to flash, please screw another tire pressure sensor into the rear wheel nozzle quickly; when the value appears in the rear wheel window, the pairing is completed. Tighten the anti-theft nut counterclockwise with the supplied wrench to prevent the sensor loosening and falling.



## Tips

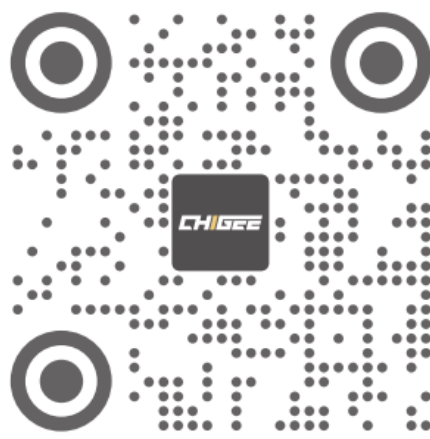
1. Do not screw the sensor into the valve before pairing.
2. Before pairing, the sensors do not need to distinguish front from rear wheels. After pairing, the sensors need to distinguish front from rear wheels; If you pair again, the sensors do not need to distinguish front from rear wheels.

There may be situations where pressure detection does not accurately reflect the actual pressure when paired. Accurate tire pressure readings can be obtained by riding a certain distance at a speed of 30 km/h or above.

Please check for air leaks after installation.




[Chigee.com](http://Chigee.com)




[Chigee.com](http://Chigee.com)

The contents of the manual are subject to change without prior notice. Der Inhalt des Handbuchs kann ohne vorherige Ankündigung geändert werden.

Makers/ /Hersteller/creator/ производители

CHIGEE Technology Co.,Ltd

Address/ /Adresse/адрес 2/F, Building 2

Sanlian Industrial Zone, Shiyan Street, Bao'an District  
Shenzhen, China

**CHIGEE** is a trademark of CHIGEE Copyright ©2021CHIGEE All Rights Reserved



## Documents / Resources



[CHIGEE MFP0019 External Tire Pressure Sensor](#) [pdf] Instruction Manual  
AIO-5 Lite, MPack0145, MFP0019 External Tire Pressure Sensor, MFP0019, External Tire Pressure Sensor, Tire Pressure Sensor, Pressure Sensor, Sensor

## References

- [User Manual](#)

[Manuals+](#). [Privacy Policy](#)

This website is an independent publication and is neither affiliated with nor endorsed by any of the trademark owners. The "Bluetooth®" word mark and logos are registered trademarks owned by Bluetooth SIG, Inc. The "Wi-Fi®" word mark and logos are registered trademarks owned by the Wi-Fi Alliance. Any use of these marks on this website does not imply any affiliation with or endorsement.