

CHIEF SSB-140 Interface Brackets Instruction Manual

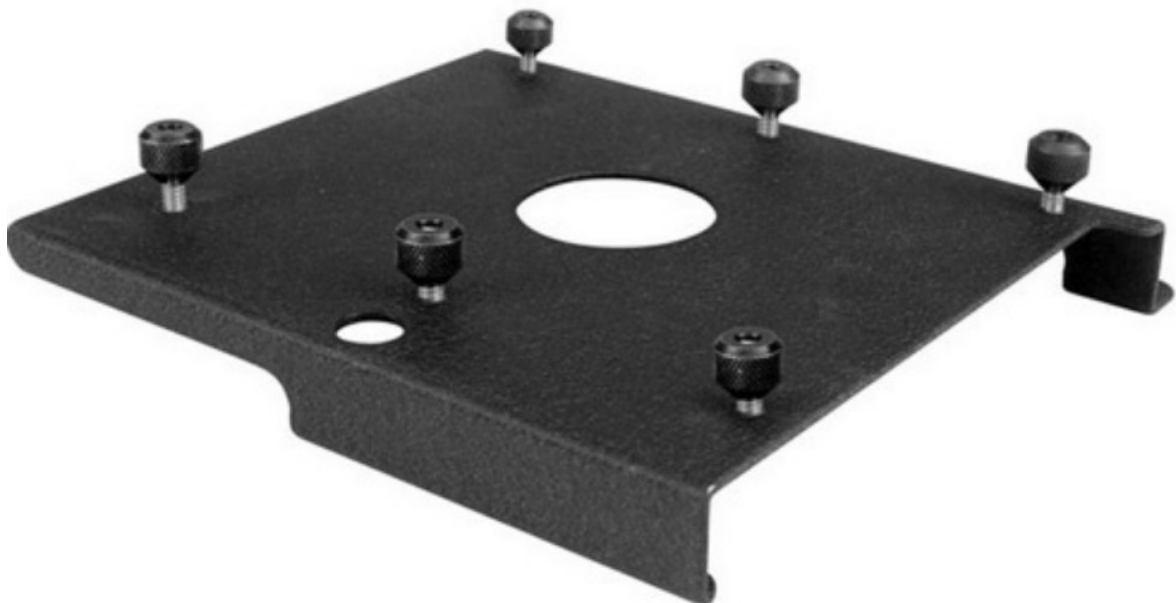
[Home](#) » [Chief](#) » CHIEF SSB-140 Interface Brackets Instruction Manual 

Contents

- [1 CHIEF SSB-140 Interface Brackets](#)
- [2 Product Information](#)
- [3 Product Usage Instructions](#)
- [4 Frequently Asked Questions](#)
- [5 INSTALLATION INSTRUCTIONS](#)
- [6 Documents / Resources](#)
 - [6.1 References](#)
- [7 Related Posts](#)



CHIEF SSB-140 Interface Brackets



Product Information

Specifications:

- Product Name: SSB-140, SSM-140, SLB-140 and SLM-140 Interface Brackets
- Manufacturer: Chief Manufacturing, a products division of Milestone AV Technologies
- Model Numbers: SSB-140, SSM-140, SLB-140, SLM-140
- Hardware Included:
 - (1) Interface Bracket
 - (6) 10-24 Thumb Nuts
 - (1) All-Points Security Kit
 - (4) Washer, Flat M6
 - (3) Screw, Phillips Pan Head, Machine, M6 x 12mm
 - (1) Screw, Phillips Pan Head, Machine, M6 x 25mm
 - (1) 1/2 x .257 x 5/8 Nylon Spacer

Product Usage Instructions

Step 1: Prepare Thumb Screws (for SLB/SSB interface bracket installation)

1. Screw thumb screws onto 10-24 x 5/8 Phillips pan head screws. Do not fully tighten thumb screws at this time.

Step 2: Install the Interface Bracket onto the Projector

2. Turn the projector upside down on a flat surface.
3. Place the interface bracket onto the bottom of the projector and align it with the threaded inserts in the projector.
4. Position M6 x 12mm Phillips pan head screws and flat washers.
5. Place the 5/8 tall spacer between the remaining hole in the bracket and the threaded insert in the projector.
6. Using the M6 x 25mm Phillips pan head screw, secure the interface bracket onto the projector.
7. Tighten all fasteners at this time.

Note: Security screws can be substituted when mounting the interface bracket to the projector by using the parts and installation instructions in the All-Points Security Kit.

Frequently Asked Questions

Q: Can I use hardware other than what is supplied by the manufacturer?

A: No, it is important to use only the hardware supplied by the manufacturer to ensure proper installation and avoid personal injury and equipment damage.

Q: What should I do if the surface of my projector is recessed?

A: If the mounting surface of your projector is recessed, use the provided screw, Phillips pan head, machine, M6 x 25mm, and the 1/2 x .257 x 5/8 nylon spacer during installation.

Q: How tight should I tighten the screws during installation?

A: Avoid over-tightening the screws as it can damage parts and lead to personal injury and equipment damage. Tighten all fasteners securely, but do not apply excessive force.

INSTALLATION INSTRUCTIONS

SSB-140, SSM-140, SLB-140 and SLM-140 Interface Brackets

SSB-140, SSM-140, SLB-140 and SLM-140 Interface Brackets are designed for use with Chief® Series Projector Mounts. See the specific installation instructions provided with the mount for additional installation information. Unpack carton and verify kit contents. If any listed parts are missing, immediately contact a Chief Customer Service representative.

WARNING: IMPROPER INSTALLATION CAN LEAD TO EQUIPMENT FALLING CAUSING SERIOUS PERSONAL INJURY AND DAMAGE TO EQUIPMENT! DO NOT substitute hardware. Use only hardware supplied by the manufacturer!

- (1) Interface Bracket
- (6) 10-24 Thumb Nuts **
- (1) All-Points Security Kit
- (4) Washer, Flat M6
- (3) Screw, Phillips Pan Head, Machine, M6 x 12mm
- (1) Screw, Phillips Pan Head, Machine, M6 x 25mm ****
- (1) 1/2" x .257" x 5/8" Nylon Spacer ****

Cleveland-24CGA10-Steamcraft-SteamCraft-Ultra-10-with-Gas-Generator -FIG-1

Only used when installing SLB/SSB interface brackets. **Used when the mounting surface of the projector is recessed.

NOTE: Specific to SSB-style and SSM-style interface bracket installation: All appropriate screws come pre-installed in the circled locations above. DO NOT attempt to substitute and USE ONLY this pre-installed hardware for SSB-style and SSM-style interface bracket installation.

WARNING: OVER-TIGHTENING OF SCREWS CAN DAMAGE PARTS AND CAN LEAD TO SERIOUS PERSONAL INJURY AND DAMAGE TO EQUIPMENT! DO NOT over-tighten screws when installing the interface bracket.

NOTE: Step 1 is only required when installing an SLB/SSB interface bracket. If an SLM/SSM bracket is being installed, proceed to Step 2.

1. Screw thumb screws onto 10-24 x 5/8" Phillips pan head screws. DO NOT fully tighten thumb screws at this time.
2. Turn the projector upside down on a flat surface.
3. Place the interface bracket onto the bottom of the projector and align bracket with the threaded inserts in projector.
4. Position M6 x 12mm Phillips pan head screws and flat washers and place 5/8" tall spacer between remaining hole in bracket and threaded insert in projector.
5. Using M6 x 25mm Phillips pan head screw, secure the interface bracket onto a projector and tighten all fasteners at this time.

NOTE: Security screws can be substituted when mounting interface bracket to projector by using the parts and installation instructions in the All-Points Security Kit.

Chief® is a registered trademark of Milestone AV Technologies. All rights reserved.

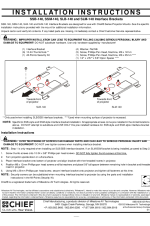
Milestone AV Technologies, and its affiliated corporations and subsidiaries (collectively, "Milestone"), intend to make this manual accurate and complete. However, Milestone makes no claim that the information contained herein covers all details, conditions or variations, nor does it provide for every possible contingency in connection with the installation or use of this product. The information contained in this document is subject to change without notice or obligation of any kind. Milestone makes no representation of warranty, expressed or implied, regarding the information contained herein. Milestone assumes no responsibility for accuracy, completeness or sufficiency of the information contained in this document.

Chief Manufacturing, a products division of Milestone AV Technologies 8401 Eagle Creek Parkway, Savage, MN 55378

- P: 800.582.6480 /
 - 952.894.6280
- F: 877.894.6918 /
 - 952.894.6918
- 8850-000129 Rev02

©2012 Milestone AV Technologies, a Duchossois Group Company 01/12

Documents / Resources

	<p>CHIEF SSB-140 Interface Brackets [pdf] Instruction Manual SSB-140 Interface Brackets, SSB-140, Interface Brackets, Brackets</p>
-------------------------------------------------------------------------------------	---------------------------------------------------------------------------------------------------------------------------------------------------------------

References

-  [Manual-Hub.com - Free PDF manuals!](#)
- [User Manual](#)

Manuals+. Privacy Policy

This website is an independent publication and is neither affiliated with nor endorsed by any of the trademark owners. The "Bluetooth®" word mark and logos are registered trademarks owned by Bluetooth SIG, Inc. The "Wi-Fi®" word mark and logos are registered trademarks owned by the Wi-Fi Alliance. Any use of these marks on this website does not imply any affiliation with or endorsement.