



CHIEF AS3A102 Adapter Bracket Flex Kit Installation Guide

[Home](#) » [Chief](#) » CHIEF AS3A102 Adapter Bracket Flex Kit Installation Guide 

Contents

- [1 CHIEF AS3A102 Adapter Bracket Flex Kit](#)
- [2 Product Information](#)
- [3 Product Usage Instructions](#)
- [4 IMPORTANT SAFETY INSTRUCTIONS](#)
- [5 DIMENSIONS](#)
- [6 Installation Instructions](#)
- [7 Documents / Resources](#)
 - [7.1 References](#)
- [8 Related Posts](#)

CHIEF®

CHIEF AS3A102 Adapter Bracket Flex Kit



Product Information

Specifications

- **Product Model:** AS3A102
- **Weight Capacity:** 8 lbs (36 kg)

Product Usage Instructions

Installation Instructions

To install the Flex Kit Adapter Bracket, follow these steps:

Parts for Installation (No Tools Required)

(A) Flex hook bracket: 1 piece

Assembly and Installation

1. Remove the two thumb nuts from the flex hook bracket (A).
2. Loosen the thumb screw until it is almost completely lowered.
3. Attach the flex kit (sold separately) to the flex kit bracket (A) using the removed thumb nuts.
4. Hang the flex hook bracket onto the top rail of the AS3LD mounting system.
5. Tighten the thumb screw until the bracket is securely installed onto the rail.

Note: Make sure the combined weight of all components attached to the AS3A102 accessory does not exceed 8 lbs (36 kg) to avoid personal injury or damage to equipment.

FAQ

Q: Can I use attachments not recommended by the manufacturer?

- **A:** No, it is important to use only the attachments recommended by the manufacturer to ensure safe and proper usage of the mounting system.

Q: Can I use this product outdoors?

- **A:** No, this product is not designed for outdoor use. Using it outdoors may result in damage to the product.

Q: What should I do if the mounting system is damaged?

- **A:** If the mounting system is damaged, do not operate it. Return it to a service center for examination and repair.

DISCLAIMER

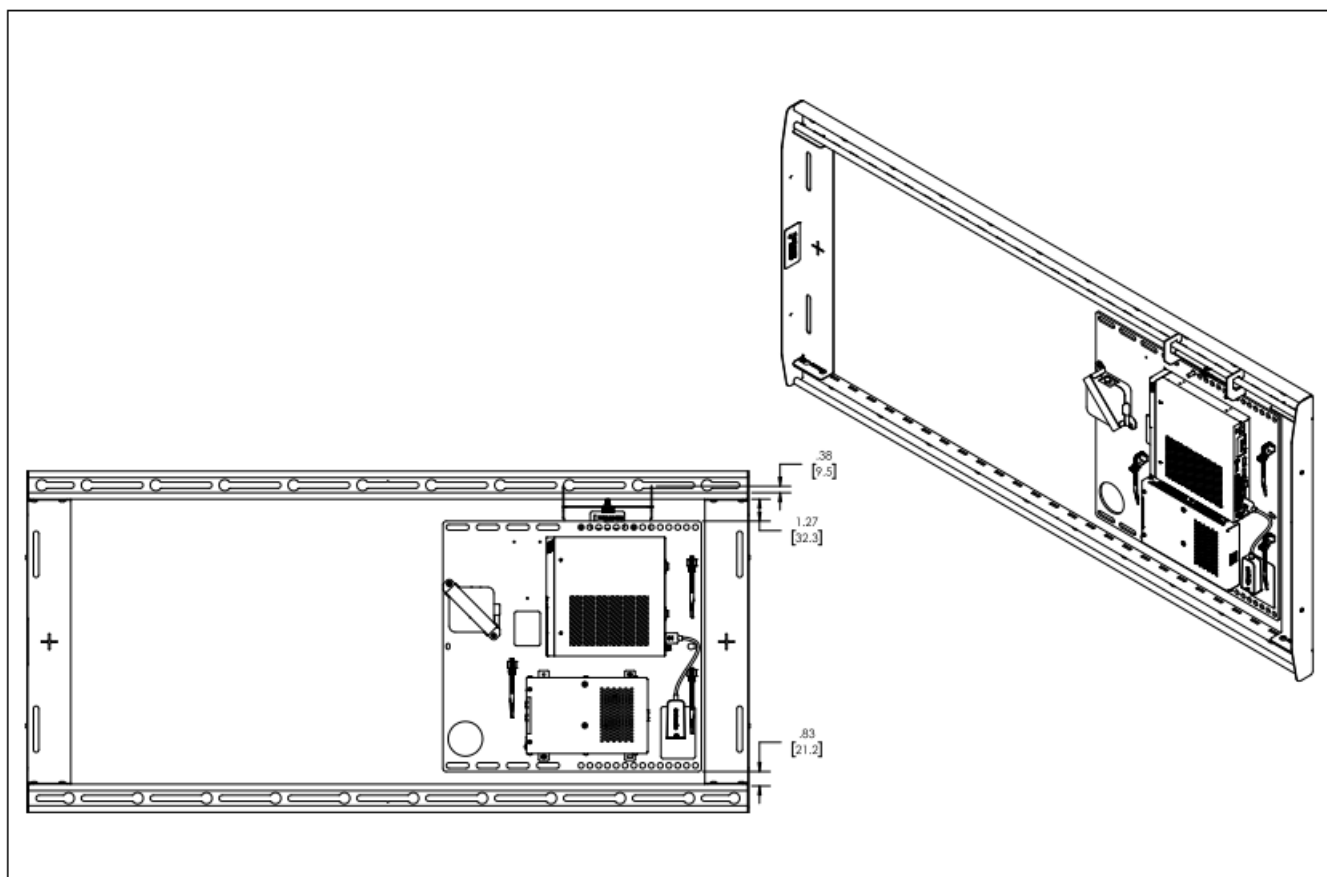
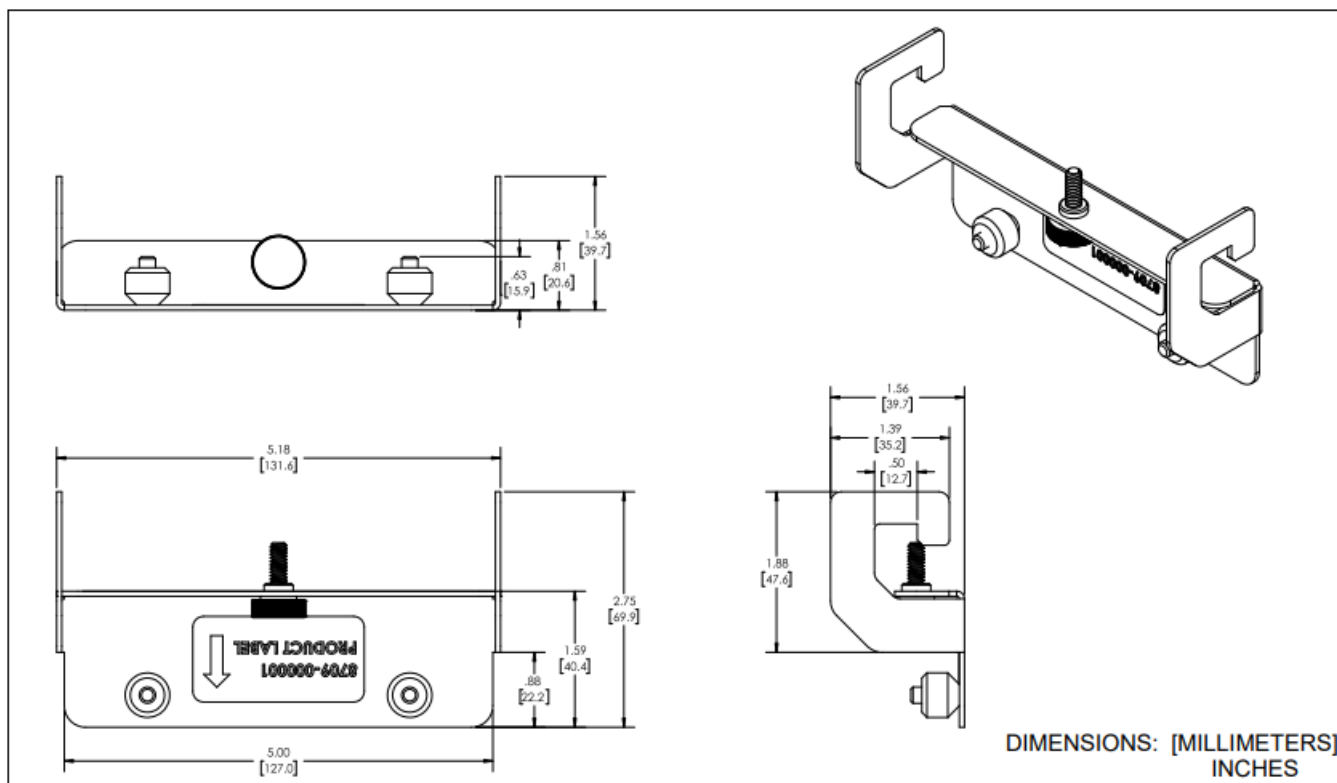
Legrand | AV and its affiliated corporations and subsidiaries (collectively “Legrand | AV”), intend to make this manual accurate and complete. However, Legrand | AV does not claim that the information contained herein covers all details, conditions, or variations, nor does it provide for every possible contingency in connection with the installation or use of this product. The information contained in this document is subject to change without notice or obligation of any kind. Legrand | AV makes no representation or warranty, expressed or implied, regarding the information contained herein. Legrand | AV assumes no responsibility for the accuracy, completeness, or sufficiency of the information contained in this document. Chief® is a registered trademark of Legrand AV Inc.

IMPORTANT SAFETY INSTRUCTIONS

- **WARNING** alerts you to the possibility of serious injury or death if you do not follow the instructions.
- **CAUTION** alerts you to the possibility of damage or destruction of equipment if you do not follow the corresponding instructions.
- **WARNING:** Failure to read, thoroughly understand, and follow all instructions can result in serious personal injury, damage to equipment, or voiding of factory warranty! It is the installer’s responsibility to make sure all components are properly assembled and installed using the instructions provided.
- **WARNING:** Exceeding the weight capacity can result in serious personal injury or damage to equipment! It is the installer’s responsibility to make sure the combined weight of all components attached to the AS3A102 accessory does not exceed 8 lbs (36 kg).
- **WARNING:** Use this mounting system only for its intended use as described in these instructions. Do not use attachments not recommended by the manufacturer.
- **WARNING:** Never operate this mounting system if it is damaged. Return the mounting system to a service center for examination and repair.
- **WARNING:** Do not use this product outdoors.

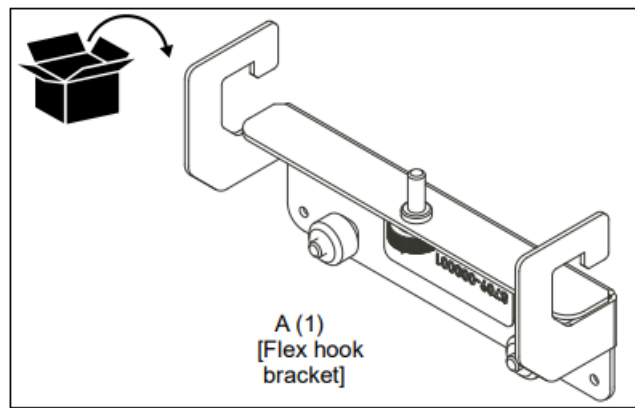
SAVE THESE INSTRUCTIONS

DIMENSIONS



Installation Instructions

PARTS FOR INSTALLATION (NO TOOLS REQUIRED)



ASSEMBLY AND INSTALLATION

1. Remove two thumb nuts from the flex hook bracket (A). (See Figure 1)

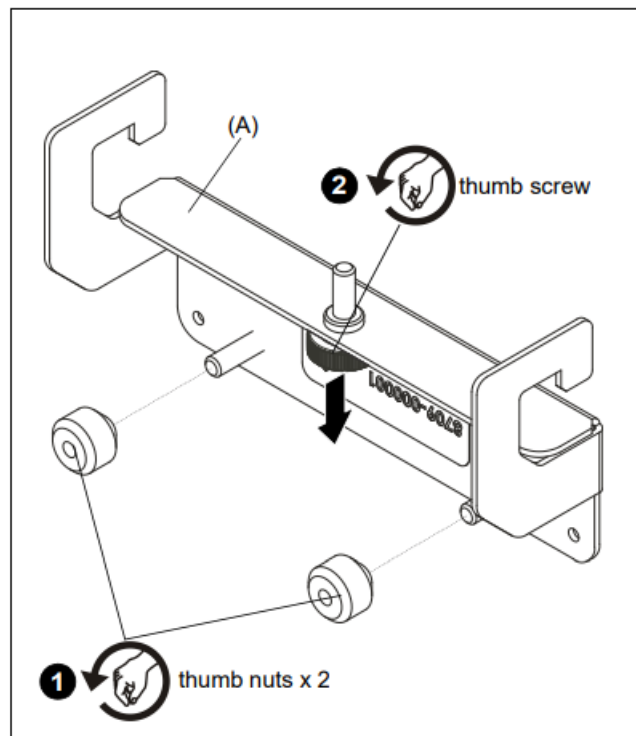


Figure 1

2. Loosen thumb screw until it is almost completely lowered. (See Figure 2)
3. Use removed thumb nuts to attach the flex kit (sold separately) to the flex kit bracket (A). (See Figure 2)

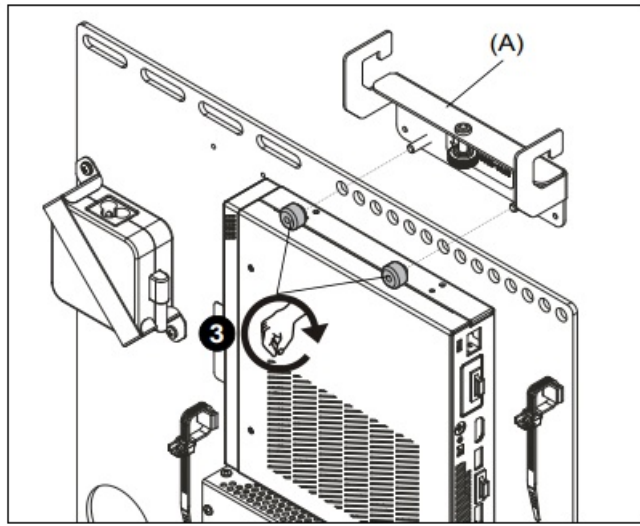


Figure 2

- **WARNING:** Exceeding the weight capacity can result in serious personal injury or damage to equipment! It is the installer's responsibility to make sure the combined weight of all components attached to the AS3A102 accessory does not exceed 8 lbs (36 kg).

4. Hang the flex hook bracket onto the top rail of the AS3LD mounting system. (See Figure 3)
5. Tighten the thumb screw until the bracket is securely installed onto a rail. (See Figure 3)

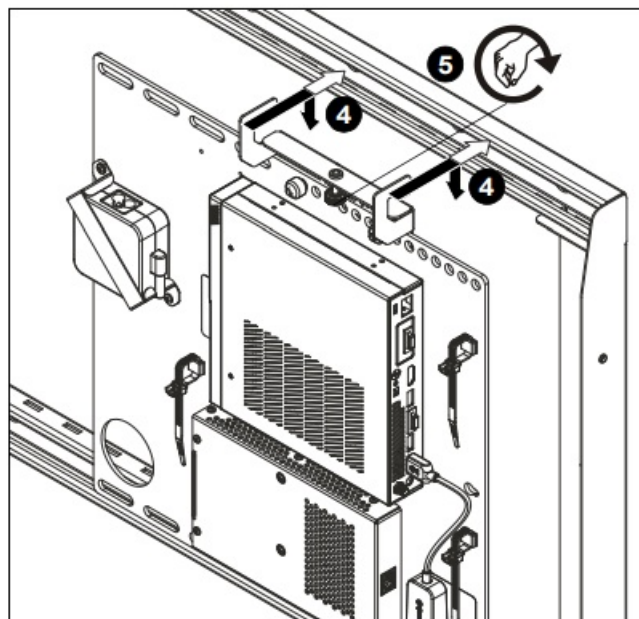
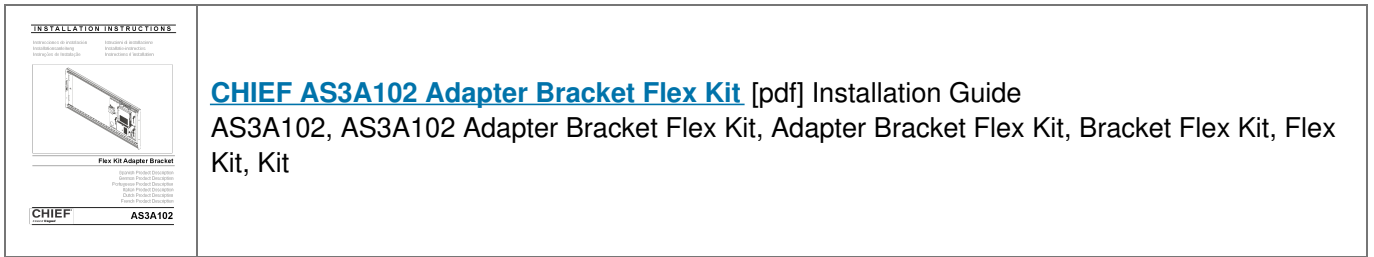


Figure 3

- USA/International 6436 City West Parkway, Eden Prairie, MN 55344
- P 800.582.6480 / 952.225.6000
- F 877.894.6918 / 952.894.6918
- Europe A Franklinstraat 14, 6003 DK Weert, Netherlands
- P +31 (0) 495 580 852 F +31 (0) 495 580 845
- Asia Pacific A Office No. 918 on 9/F, Shatin Galleria 18-24 Shan Mei Street
- Fotan, Shatin, Hong Kong
- P 852 2145 4099
- F 852 2145 4477
- 8800-003398 Rev002023 Legrand | AV www.legrandav.com 10/2023

Documents / Resources



References

- [!\[\]\(a88007b249b36c75dcbde101f514cec3_img.jpg\) Professional AV Equipment and Devices | Legrand AV](#)
- [User Manual](#)