



Chi Impulse Aroma Diffuser Instruction Manual

[Home](#) » [CHI](#) » Chi Impulse Aroma Diffuser Instruction Manual 

Contents

- [1 Chi Impulse Aroma Diffuser](#)
- [2 Product Information: Impulse Aroma Diffuser](#)
- [3 Product Usage Instructions:](#)
- [4 Maintenance:](#)
- [5 Technical Specifications:](#)
- [6 Safety Instructions](#)
- [7 PRECAUTIONS FOR USE](#)
- [8 WORKING](#)
- [9 DETAILED DIAGRAM OF THE COMPONENTS](#)
- [10 Documents / Resources](#)
- [11 Related Posts](#)

CHI®

Chi Impulse Aroma Diffuser



Product Information: Impulse Aroma Diffuser

The Impulse Aroma Diffuser is an electronic device that helps to spread fragrance in the surrounding area. It uses ultrasonic technology to create a fine mist of water and essential oils, which are then dispersed into the air. The device has a modern design and is made of high-quality materials, including a glass cover and ceramic disc.

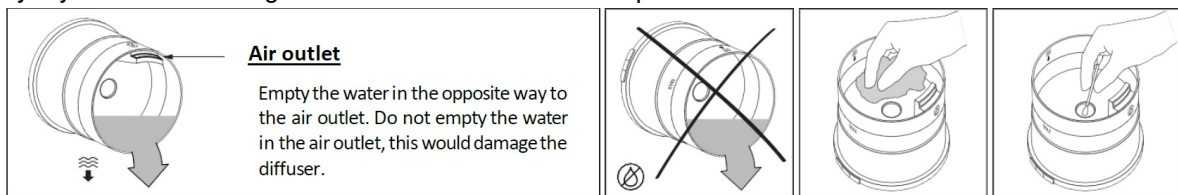
Product Usage Instructions:

1. Plug the adapter into the DC connector at the bottom of the diffuser.
2. Place the diffuser on a flat and stable surface away from the edge.
3. Remove the glass cover and inner lid of the diffuser.
4. Pour mineral water (bottled or tap water) into the reservoir without exceeding the indicated maximum level (120 ml).
5. Add a few drops of essential oil to the water (optional).
6. Carefully replace the inner lid and glass cover on the base of the diffuser. Ensure that the glass cover is properly placed on the base.
7. Connect the device to a power outlet without tilting or holding it.
8. Press the power button once to turn on the device and start continuous diffusion (highest evaporation level: 30ml/h).
9. Press the power button again to let the diffuser evaporate for 60 minutes. After this time, it will automatically stop.
10. Press the power button a third time to start cyclic diffusion.
The device will evaporate for 30 seconds and then stop for 30 seconds. This will continue for 120 minutes.
After this time, the device will automatically stop.
11. Press the power button a fourth time to turn off the device completely.
12. Press the mode button once for the medium evaporation level: 22 ml/h.
13. Press the mode button a second time for the lowest evaporation level: 15 ml/h.
14. Press the mode button a third time for the highest evaporation level: 30 ml/h.
15. Press the light button once to turn on the warm light.

16. Press the light button a second time to turn off the light.

Maintenance:

It is recommended to change the water in the reservoir frequently and clean the diffuser once or twice a week, especially if you want to change the aroma. Follow these steps for maintenance:



1. Turn off the device and unplug it.
2. Remove the covers and empty the reservoir. Drain in the opposite direction of the air outlet. Do not pour water into the air outlet as it will damage the device.
3. Clean the inside of the diffuser with a soft cloth and a little alcohol to avoid residue from oil and water (lime).
4. Once a month, put a cup of alcohol in the diffuser and let it soak overnight.
5. It is important to keep the ceramic disc clean (clean with alcohol), as residue on the disc can obstruct nebulization. Do not clean it with a hard object (scratches) as it may damage the disc.
6. If the device is not maintained by the user, the warranty will be voided.

Technical Specifications:

- Model: NA-403-120
- Input power supply: AC 100-240V,50/60Hz
- Output power supply: DC24V 500mA
- Ceramic disc lifespan: +/- 3000 hours
- Tank capacity: 120 ml
- Dimensions (approx.) : 120 x 270 H mm
- Recommended for a surface of: 60 m² (max.)

Caution: The manufacturer is not liable for damages resulting from improper use of the device.

Safety Instructions

WARNING

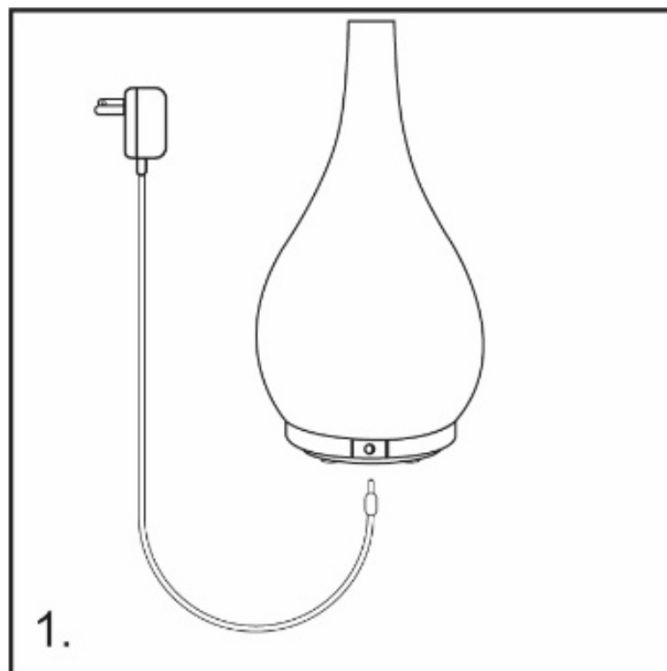
- This appliance can be used by children aged from 8 years and above and persons with reduced physical, sensory or mental capabilities or lack of experience and knowledge if they have been given supervision or instruction concerning use of the appliance in a safe way and understand the hazards involved. Children shall not play with the appliance. Cleaning and user maintenance shall not be made by children without supervision.
- Only to be used for ambiance diffusion purpose, do not inhale.
- Use in an environment between 10°C and 30°C.
- The appliance is only to be used with the power unit supply provided with the appliance.
- For optimal maintenance, use mineral water (bottled or tap water).
- Do not exceed the maximum water level (120 ml).

- Always pour the water before adding essential oils.
- Do not use pure essential oils without water.
- The appliance is only to be used with the recommended vaporizing medium. The use of other substances may give rise to a toxic or fire risk.
- Continuous use of the diffuser may, in the long term, damage the product and shorten its lifespan.
- Unplug the appliance before any manipulation such as cleaning or filling operations for example. Empty the tank when the appliance is not in use.
- Do not remove the lid or cover the diffuser when the appliance is in use.
- Change frequently the water in the tank to avoid any dirt building up that may damage the appliance.
- Clean the water tank every week. Do not use chemical products (such as acids, alkaline, etc.) or any corrosive detergents to clean the appliance.
- Do not immerse.
- In case of water infiltrations into the appliance, unplug the diffuser immediately and leave it to dry for at least 3 days before reusing it.

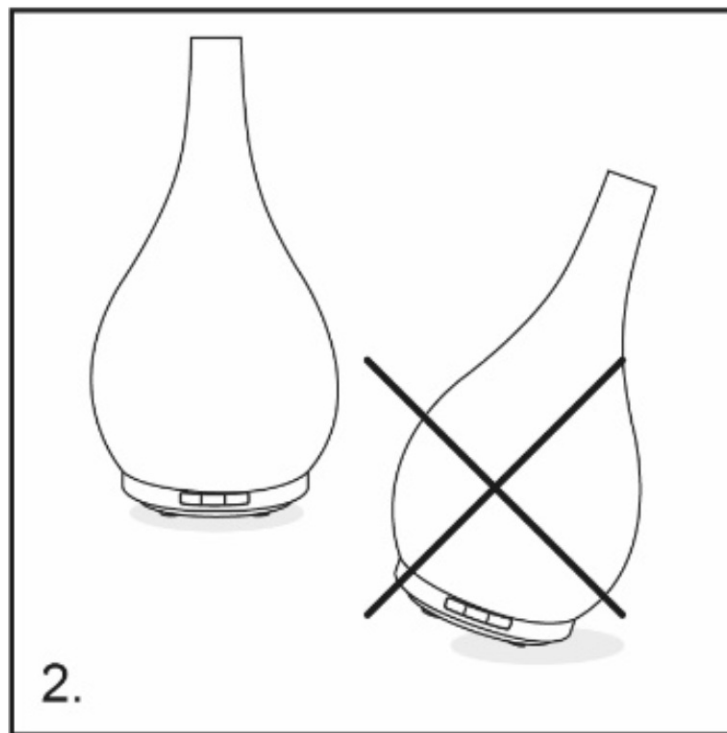
The producer is not responsible for damages caused by wrong use of device.

PRECAUTIONS FOR USE

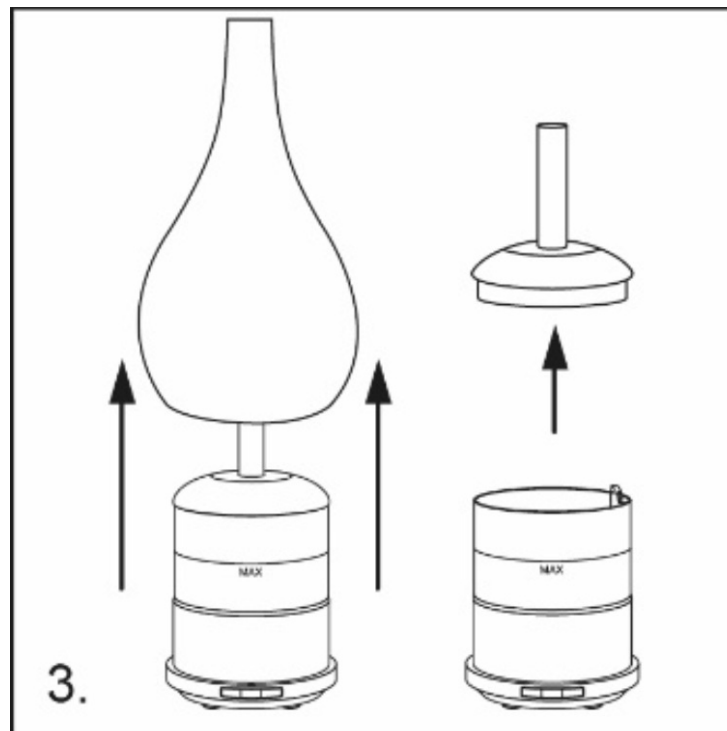
1. Insert the adaptor's connector into the DC jack input at the back of the base of the diffuser.



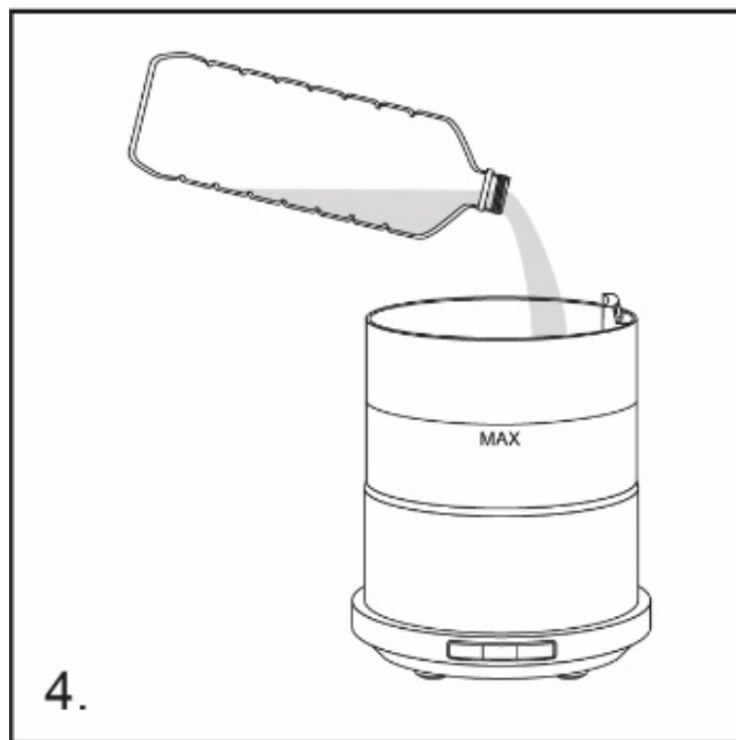
2. Place the diffuser on a flat and stable surface and away from the edge.



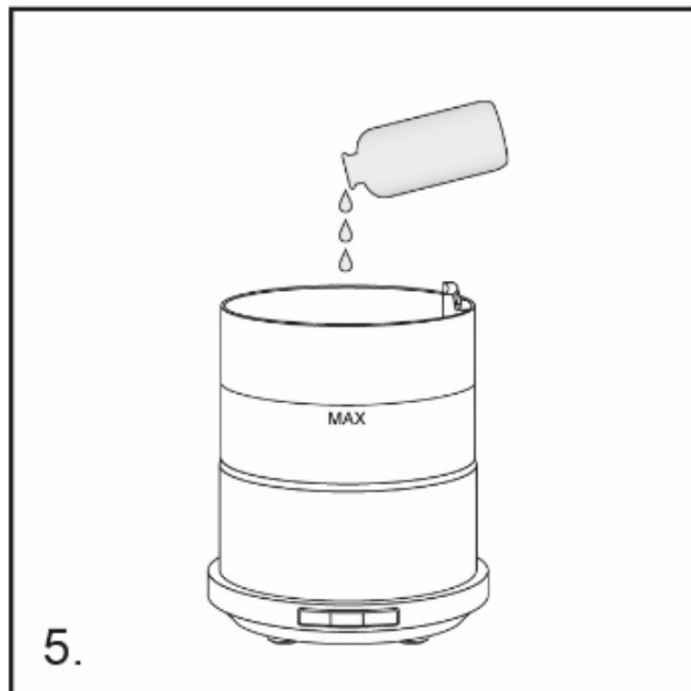
3. Remove the diffuser's outer and inner cover.



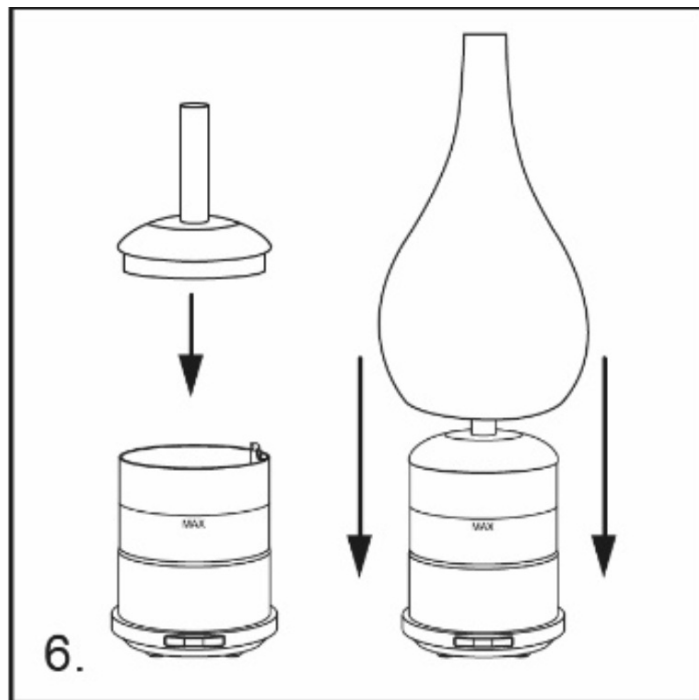
4. Pour mineral water (bottled or tap water) into the water tank up to the maximum level indicated (120 ml).



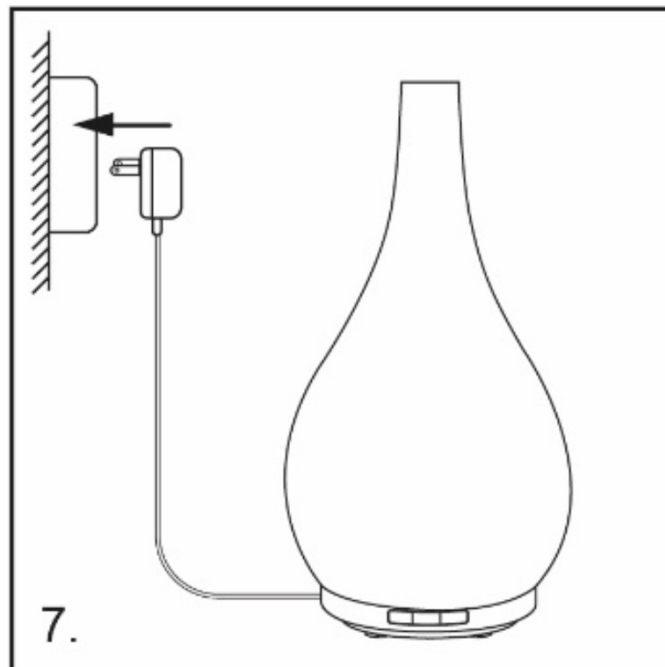
5. Add a few drops of essential oils (3-12 drops) to the water tank.



6. Replace the inner cover and the outer cover on the diffuser.



7. Plug the adaptor into the appropriate outlet.



WORKING

This diffuser has 3 function buttons on the front side:

ON/OFF (middle button) :

1. Press the ON/OFF button once to turn on the device and start the continuous diffusion (highest mist volume diffusion: 30 ml/h)
2. Press a second time to operate the diffuser for 60 minutes. After these 60 minutes, it will stop automatically.
3. Press a third time to start the cyclic diffusion. The device will operate for 30 seconds and stop for 30 seconds during 120 minutes. After that, the device will automatically stop.
4. Press a fourth time on the ON/OFF button to switch completely the diffuser OFF.

Mist volume (Left button) :

1. Press once to get the middle mist volume diffusion (22 ml/h).
2. Press a second time to get the lowest mist volume diffusion (15ml/h).
3. Press a third time to get the highest mist volume diffusion (30 ml/h).

Warm Light (Right button):

1. Press once to switch on the color changing mode
2. Press a second time to sets to one color (to the color currently shown)
3. Press a third time to switch off

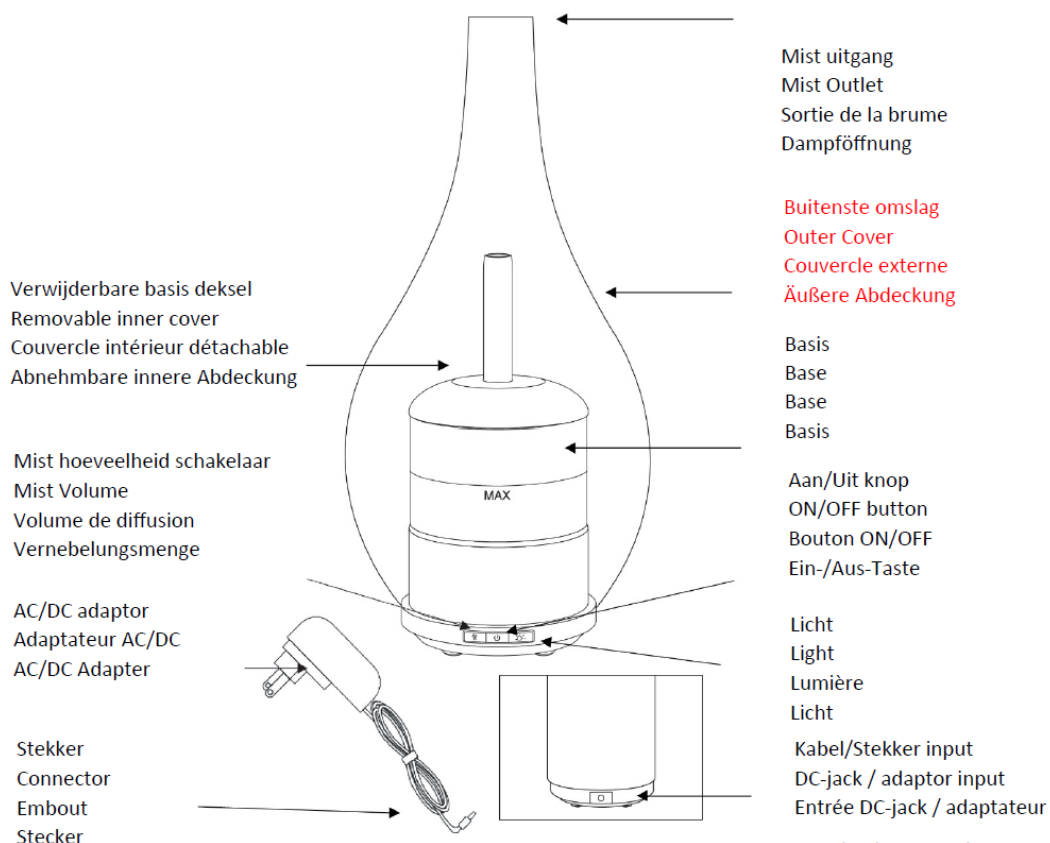
Remark:

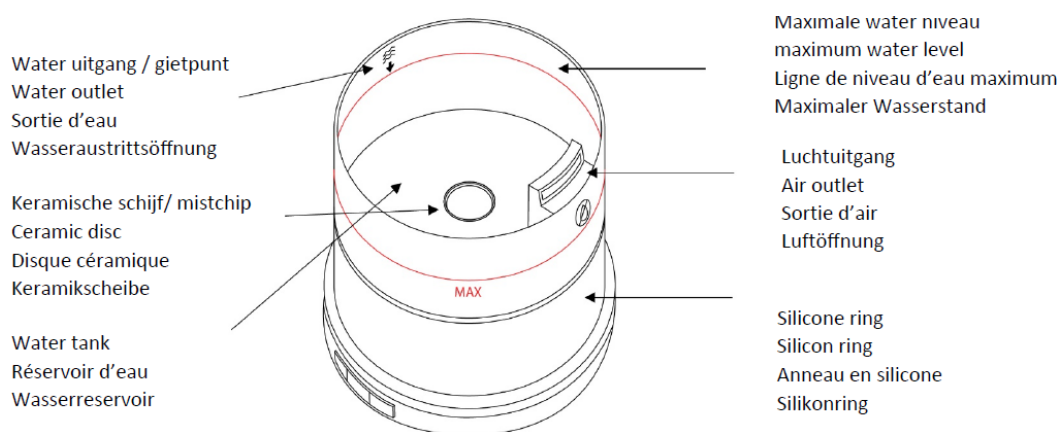
When the water level in the tank is too low or at zero, the diffuser stops automatically. To go back to a normal working, top the water up by following the « Precautions for use » steps.

Disposal


Correct Disposal of this product. This marking indicates that this product should not be disposed with other household wastes throughout the EU. To prevent possible harm to the environment or human health from uncontrolled waste disposal, recycle it responsibly to promote the sustainable reuse of material resources. To return your used device, please use the return and collection systems or contact the retailer where the product was purchased. They can take this product for environmentally safe recycling.

DETAILED DIAGRAM OF THE COMPONENTS





Documents / Resources

	<p>Chi Impulse Aroma Diffuser [pdf] Instruction Manual Impulse Aroma Diffuser, Impulse, Aroma Diffuser, Diffuser</p>
---	--