



CHESONA YFX7-N-V1 Multifunctional Keyboard with Touchpad User Manual

[Home](#) » [CHESONA](#) » CHESONA YFX7-N-V1 Multifunctional Keyboard with Touchpad User Manual 

Contents

- [1 CHESONA YFX7-N-V1 Multifunctional Keyboard with Touchpad](#)
- [2 Product Information](#)
- [3 Product Usage Instructions](#)
- [4 FAQ](#)
- [5 Troubleshooting](#)
- [6 Product Specification](#)
- [7 FCC](#)
- [8 Documents / Resources](#)
 - [8.1 References](#)
- [9 Related Posts](#)

CHESONA

CHESONA YFX7-N-V1 Multifunctional Keyboard with Touchpad



Product Information

Specifications

- **Product Name:** Multifunctional Keyboard with Touchpad
- **Model:** YFX7-N-V1
- **Compatibility:** iPadOS 13 and newer versions
- **Charging Voltage:** 5V only

Product Usage Instructions

Setup/Connection

1. Switch ON/OFF to the ON position.
2. **For BT1 pairing:** Long press “+” until the blue light flashes quickly.
3. **For BT2 pairing:** Long press “+” until the green light flashes quickly.
4. Toggle Bluetooth ON in the Settings app. The device is connected when the Bluetooth indicator stops flashing.
5. In the Bluetooth section of the Settings app, tap on “Bluetooth Keyboard” under My Devices.
6. In the pop-up window, click on “Pairing” as indicated in the figure.
7. The pairing process is considered complete after the Connect indicator appears.
8. **Note:** The keyboard supports connecting two devices at the same time. Short press FN+Q/W to switch between Bluetooth BT1/BT2.

ON/Off Switch

To turn on/off the keyboard, switch the ON/OFF button to the desired position.

Shortcut Keys

To access shortcut keys, long press the command key in any application. When the red light flashes, it indicates that the device requires charging and the working voltage supports 5V only. Touchpad Function/Gesture

Note: Make sure Bluetooth is connected and the touchpad function is on.

- **One Finger Tap mode**
 - Action 1: Tap once in the main interface

- **Function:** Mouse cursor operation.
 - Action 2: Tap two times and slide
- **Function:** Select or move icon.
 - Action 3: Tap two times when iPad is in sleeping mode
- **Function:** Wake up iPad.
- **Two-finger swipe**
 - Action 5: Slides fingers up or down
- **Function:** Scroll up/down web pages or files.
 - Action 6: Slides fingers left or right
- **Function:** Flip the page to the left or right. Three-finger swipe up
 - Action 8: Swipe up
- **Function:** Open APP switcher. Two Fingers Tap mode
 - Action 4: Tap the trackpad once
- **Function:** Show the shortcuts. Two-finger zoom
 - Action 7: Two fingers for zooming in or out
- **Function:** Only on websites.

FAQ

Q: What devices is this keyboard compatible with

A: This keyboard is compatible with iPadOS 13 and newer versions. We recommend upgrading your iPad to version 13.4.1 for best performance.

Q: How do I upgrade my iPad to the latest version

A: To upgrade your iPad to the latest version, follow these steps

1. Click Download and Install. If it displays “Resume Download,” tap it instead.

Q: Can I connect multiple devices to this keyboard

A: Yes, this keyboard supports connecting two devices at the same time. Use the shortcut FN+Q/W to switch between Bluetooth BT1/BT2.

Q: How do I enable the touchpad function on my iPad with system version 13.3.1

A: To enable the touchpad function on your iPad with system version 13.3.1, follow these steps

1. Go to Settings > Accessibility > Touch
2. Make sure the Assistive Touch option is turned on.


Technical Support

If you have any questions, please let us know ASAP! We'll make sure you get a response to each question and provide you with the most enjoyable experience! All devices come with a 12-month warranty and you can feel free to relax and be comfortable with your purchase.

Compatibility


Compatible with iPadOS 13 (and newer versions). We recommend that you upgrade your iPad to 13.4.1 for best performance.

To check your iPad system version :

1. Go to Settings General  About > Software Version.
2. Upgrade to iPadOS 13.4.1 or later to properly get access to the touchpad functions.



To upgrade your iPad to the latest version

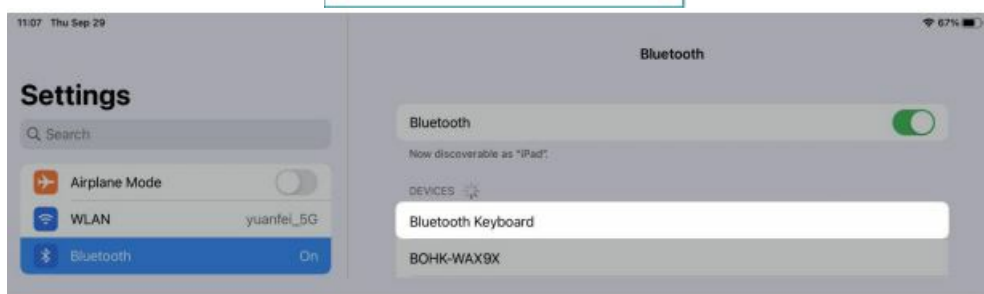
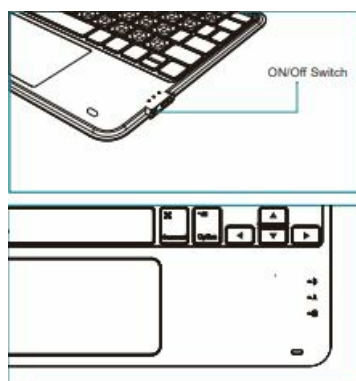
1. Go to Settings  General > Software Update



2. Click "Download and Install". *If it displays Resume Download, tap it instead

Setup/Connection To pair with your iPad

- Switch ON/OFF to ON position.
- **BT1:** Long press flashes quickly **BT2:** Long press flashes quickly
- Toggle Bluetooth ON in the Settings stops flashing)(device is connected when Bluetooth indicator



- Tap on "Bluetooth Keyboard" under "My Devices" in the "Bluetooth" section of the "Settings" app
- Click pairing in the pop-up window, as the figure indicates below.


When pairing with a new device, repeat steps 1-3

Pairing process is considered complete after "**Connect**" indicator appears. **Note:** The keyboard supports

connecting two devices at the same time, short press FN+Q/W to switch Bluetooth BT1/BT2



If your system is 13.3.1, please follow the steps below to enable the touchpad function

- Go to Settings Accessibility  > Touch
- Make sure the Assistive Touch option is turned on



Shortcut Keys

Tip: You can check the available shortcuts in any application by long pressing the command key; when the red light flashes, please note the device requires to be charged and the working voltage supports 5V only.



- Command+Tab = APP switch
- Command+A = Select all
- Command+C = Copy
- Command+V = Paste
- Command+Z = Redo/Undo

- Command+X = Cut
- Fn+Q/W = Bluetooth pairing
- Fn+Spacebar = Touchpad Switch

Touchpad Function/Gesture

- **One Finger Tap mode**

Action 1: Tap once in the main interface

Function: Mouse cursor operation.

Action 2: Tap two times and slide.

Function: Select or move icon.

Action 3: Tap two times when iPad is in sleeping mode. **Function:** Wake up iPad.

- **Two-finger swipe**

Action 5: Slides fingers up or down.

Function: Scroll up/down web pages or files

Action 6: Slides fingers left or right.

Function: Flip the page to the left or right.

- **Three-finger swipe up**

Action 8: Swipe up

Function: Open APP switcher

- **Two Fingers Tap mode Action 4:** Tap the trackpad once **Function:** Show the shortcuts

- **Two-finger zoom**

Action 7: Two fingers for zooming in or out / out.

Function: Only on websites

- **Three Fingers Slide Left Or Right Action 9:** Swipe left or right. **Function:** Application window switching.



- **Move the cursor to the bottom of the screen. Function:** Cut out DOCK bar.

In the application page Touch and hold the left trackpad, you can drag the application icons to where you want them to be touch and hold the right trackpad to display the APP menu (same function as the right mouse button)

- Move the cursor to the upper right corner.

Function: Open the control center.

- On the edit page Touch and hold the left trackpad, you can select the text you want and you can drag and drop around the text.

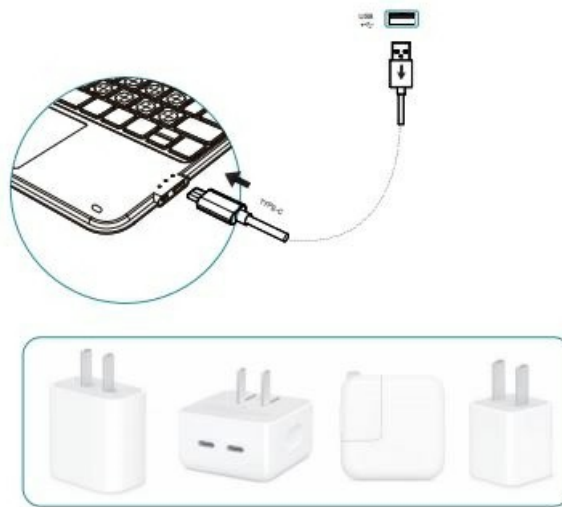
Installation and Removal

- Put one end of the tablet into the bottom of the case (pay attention to the alignment of the camera hole)
- Push the tablet into the protective case
- Press the top two corners of the case and push out
- Remove the tablet



Charging

- Turn on the keyboard. (If the battery indicator is flashing, please charge the keyboard.)
- Plug the charging cable (included) into the keyboard and charger (not included, iPad or iPhone charger is recommended)
 - a) The light turns red when the keyboard is charging
 - b) When charging is completed, the battery indicator turns off



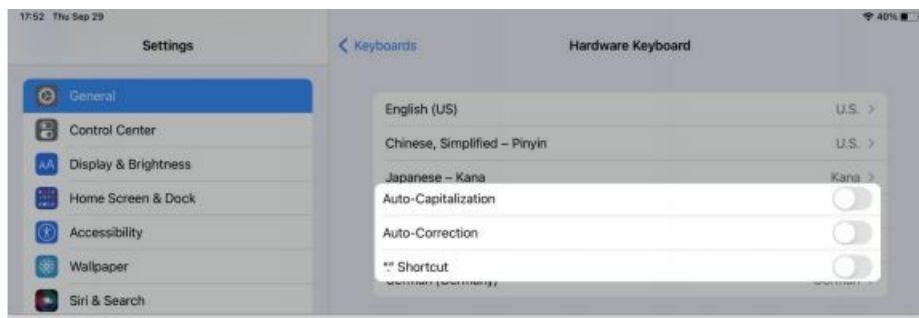
Troubleshooting

If the keyboard does not work properly, please check the followings

1. The Bluetooth function of iPad (or other Bluetooth devices) is turned on
2. Bluetooth keyboard within 33 feet.
3. The Bluetooth keyboard is charged;
4. Make sure the keyboard is on (battery indicator is on)
5. Make sure the keyboard is paired via Bluetooth

If you do not need autocorrect or punctuation, please follow these steps

1. Open Settings > General > Keyboard > Hardware keyboard
2. Turn off auto-capitalization, auto-correction and “.” shortcuts (please refer to the picture below)image below).



If Bluetooth pairing fails, please try the following steps

1. Press and hold the key+ , the red, green and blue indicators light up at the same time, then release, the keyboard has been restored to factory settings.
2. Delete all Bluetooth devices on iPad.
3. Turn off the Bluetooth function on iPad.
4. Restart iPad.
5. Turn on the Bluetooth switch on iPad.
6. Turn on the keyboard switch.
7. Repeat the steps described on page 2 and 3 to pair the keyboard.

Product Specification

Operation distance : 10 meters (33 feet) Modification system :

GFSK Operating voltage : 3.0-4.2V

Operating voltage : 10mA

Sleeping current : <40μA

Charging current : <300mA

Continuous working time : 70 hours

Keyboard hibernation time : 10 minutes Charging time : <4 hours

Charging voltage : 5V

Key life : 3 million times

Operating temperature : -10+55 °C

Maintenance : Please preserve the keyboard under normal temperature and recharge under normal voltage.

Compliance

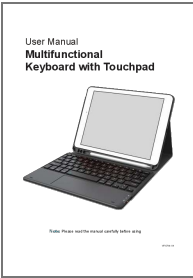
FCC

NOTE: This equipment has been tested and found to comply with the limits for a Class B digital device, pursuant to part 15 of the FCC Rules. These limits are designed to provide reasonable protection against harmful interference in a residential installation. This equipment generates uses and can radiate radio frequency energy and, if not installed and used in accordance with the instructions, may cause harmful interference to radio communications. However, there is no guarantee that interference will not occur in a particular installation. If this equipment does cause harmful interference to radio or television reception, which can be determined by turning the equipment off and on, the user is encouraged to try to correct the interference by one or more of the following measures: encouraged to attempt to correct the interference by one or more of the following measures:

- Reorient or relocate the receiving antenna;
- Increase the separation between the equipment and receiver;
- Connect the equipment into an outlet on a circuit different from that to which the receiver is connected;

- Consult the dealer or an experienced radio/TV technician for help.
- Changes or modifications not expressly approved by the party responsible for compliance could void the user's authority to operate the equipment. This device complies with Part 15 of the FCC Rules. Operation is subject to the following two conditions:
 1. this device may not cause harmful interference.
 2. this device must accept any interference received, including interference that may cause undesired operation.

Documents / Resources

 <p>User Manual Multifunctional Keyboard with Touchpad</p> <p>PLEASE READ THE MANUAL CAREFULLY BEFORE USING</p>	<p>CHESONA YFX7-N-V1 Multifunctional Keyboard with Touchpad [pdf] User Manual JZ-X7-BK, YFX7-N-V1, YFX7-N-V1 Multifunctional Keyboard with Touchpad, Multifunctional Keyboard with Touchpad, Keyboard with Touchpad, Touchpad</p>
--	---

References

- [User Manual](#)