



# CHESONA YF8810 Wireless Keyboard and Mouse Combo User Manual

[Home](#) » [CHESONA](#) » CHESONA YF8810 Wireless Keyboard and Mouse Combo User Manual 

## Contents

- [1 CHESONA YF8810 Wireless Keyboard and Mouse Combo User Manual](#)
- [2 Product Overview](#)
- [3 Attention](#)
- [4 Indicator Light and Buttons](#)
- [5 Keys and Functions](#)
- [6 Keyboard Pairing Steps](#)
- [7 Mouse Pairing Steps](#)
- [8 If connection failure, please follow below steps:](#)
- [9 How to switch between the connected devices:](#)
- [10 Power Saving Mode](#)
- [11 Troubleshooting](#)
- [12 Documents / Resources](#)
  - [12.1 References](#)
- [13 Related Posts](#)

## CHESONA YF8810 Wireless Keyboard and Mouse Combo User Manual



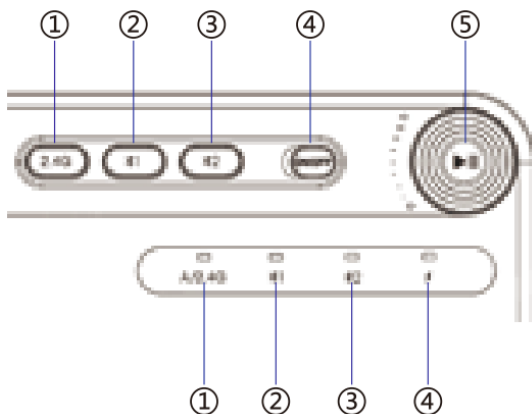
## Product Overview



## Attention

1. When not used for a long time, please turn off the power to prolong the battery life of the keyboard.
2. Do not use liquid to clean the keyboard directly. Clean the keyboard with alcohol or similar volatile disinfectant.

## Indicator Light and Buttons



### Caps Lock/2.4GHz Indicator

The Caps Lock indicator will turn green when Caps Lock is activated. The blue light will flash when pairing via 4GHz receiver.

### BT I Indicator

The blue light will flash slowly for 3 seconds and then go out. Switching channels, the blue light will flash quickly when pairing.

### BT II Indicator

The blue light will flash slowly for 3 seconds and then go out. Switching channels, the blue light will flash quickly when pairing.

## Power Indicator

Red light is on when charging, red light is off when full.

## Volume Button

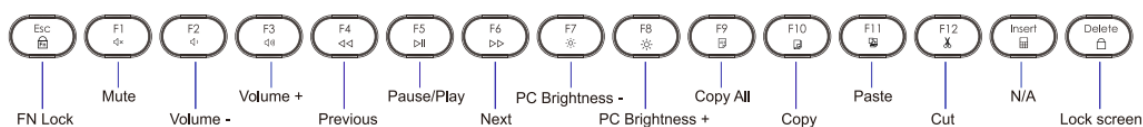
Clockwise: volume up + Counterclockwise: volume down

**NOTE:** The connection indicator of the keyboard will flash every 3 seconds order to remind you which connection way is using.

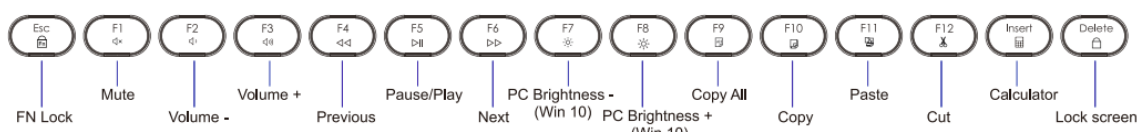
## Keys and Functions

When you need to use the shortcut keys, press the “Fn” key in the same row.

### MAC:



### Windows :

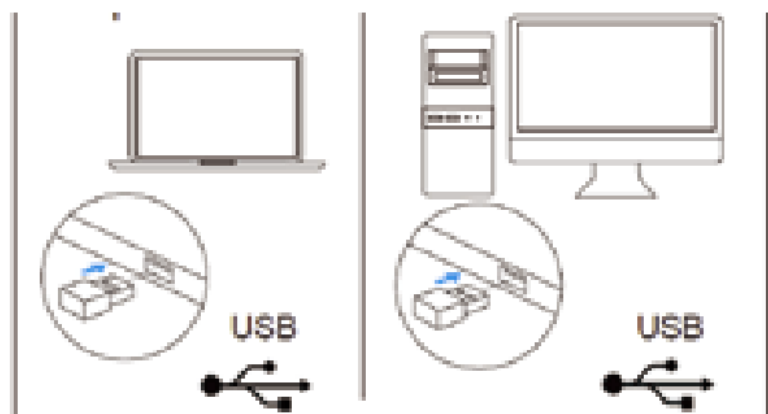


## Keyboard Pairing Steps

**When connected through the 2.4GHz receiver:**

**Step 1.** Please make sure that the keyboard is fully charged .

**Step 2.** Slide the power switch to left to turn on the keyboard, then plug 2.4G USB receiver into an USB port of the computer.



### **When connected through BT:**

**Step 1.** Please make sure that the keyboard is fully charged.

**Step 2.** Short press the \*1/\*2 button to select the channel, press and hold the button for 5 seconds, the 1/2 indicator will flash rapidly.

**Step 3.** Turn on the Bluetooth of your device.

**Step 4.** Choose the " BT 5.0 KB" / "BT 3.0 Keyboard" in the searching page of the device, and the keyboard will connect automatically.

### **Mouse Pairing Steps**

#### **When connected through the 2.4GHz receiver:**

**Step 1.** Please make sure that the mouse is fully charged.

**Step 2.** Slide the power switch up to turn on the mouse, then plug 2.4G USB receiver into an USB port of the computer.

**Step 3.** The red 2.4G light on top will blink and the mouse connected.

#### **When connected through BT:**

**Step 1.** Please make sure that the mouse is fully charged.

**Step 2.** Short press the button at the bottom of the mouse to select press the button for 5 seconds, 1/2 light will flash. \*1/\*2 channel, long

**Step 3.** Turn on the BT Function of your device.



**Step 4.** Choose the "BT 5.0 Mouse" / "BT 3.0 Mouse" in the searching page of the device, and the mouse will connect automatically.


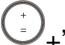
If the command keys in Mac or the win keys in Windows can not use

1. Press "Fn + Q together then the cmd in you Mac will work.
2. Press "Fn+W together then the win keys in you Windows will work.

### **If connection failure, please follow below steps:**

#### **Keyboard re-pairing:**

**Step 1.** Turn on the keyboard, press "  +  "to restore the factory Two blue lights flash three times and then one blue light flashes.

**Step 2.** Press "  +  +", the blue light will flash quickly.

**Step 3.** Plug the 2.4G USB receiver into the computer and keep the keyboard within 30cm (0.98ft) of the receiver within 10 seconds.

### **Mouse re-pairing:**

**Step 1.** Turn off the mouse and plug out the 2.4G USB receiver.

**Step 2.** Hold down the “Left button, Wheel button and Right button “together for 3s, and then turn on the mouse.

**Step 3.** Insert the receiver into the computer within 10s, get the mouse close to the receiver within 30cm (0.98 feet).

### **How to switch between the connected devices:**

#### **Keyboard switching**

1. When you need to switch to your computer with 2.4GHz adapter, press the “2.4G” button at the top right corner of the keyboard.
2. When you need to switch to your device with 1/2 connection, press the \*1/\*2 button on the top right corner of the keyboard.

#### **Mouse switching:**

1. When you need to switch to computer with “2.4GHz” adapter, press the button at the bottom of the mouse to make the “2.4GHz” red light blink, the mouse will be connected with your computer.
2. When you need to switch to your device with 1/2 connection, press the button at the bottom of the mouse so that the mouse will be connected to your device when the \*1/\*2 light flashes.

### **Power Saving Mode**

When the keyboard is not operated within 3 seconds, it will automatically enter the sleep mode.

To wake up the keyboard, press any key and wait for 2-3 seconds, it will automatically connect to the device.

### **Troubleshooting**

#### **If you are unable to connect to the device.**

1. Make sure the switch is turned on.
2. Make sure that the 2.4G USB receiver is plugged into the USB port of your computer.
3. Make sure the device has enough power.
4. Make sure the keyboard is in operating range.

If your keyboard typing delay, does not work.

1. Make sure there is no 2.4G device (such as a router) to interfere with the connection. nearby

2. Make sure that the keyboard battery has power.
3. Make sure there are no full metal chassis signals that may be blocked.
4. The computer is running too many tasks and the CPU memory is not full enough to handle the signal from the receiver.

**If the mouse does not work, the delay is obvious.**

1. Please carefully check the battery of the mouse.
2. If your computer is connected to a wired mouse at the same time, please unplug it. Otherwise it may cause a working driver conflict.
3. Make sure your mouse is not used on materials with good light-transmitting media such as glass (the mouse uses diodes for positioning, and glass and other materials will make the positioning inaccurate and delayed).

**If the Shortcut Keys is not functional.**


1. Press the “Fn” Key on the same row to lock/unlock the shortcut keys function.
2. When the shortcut keys function is off, please press the “Fn” key and the required function key together.
3. When the shortcut keys function is on, press the keys you need to use directly.

**Note:**

1. The F1-F12 keys are not available in MacOS.
2. The brightness control shortcut keys are not available in Windows 7 OS.

---

## Documents / Resources

	<p><a href="#">CHESONA YF8810 Wireless Keyboard and Mouse Combo</a> [pdf] User Manual YF8810 Wireless Keyboard and Mouse Combo, YF8810, Wireless Keyboard and Mouse Combo, Keyboard and Mouse Combo, Mouse Combo, Combo</p>
---	---

## References

- [User Manual](#)