



CHESONA Multi-Device Bluetooth Keyboard and Mouse Combo User Manual

[Home](#) » [CHESONA](#) » CHESONA Multi-Device Bluetooth Keyboard and Mouse Combo User Manual 

CHESONA

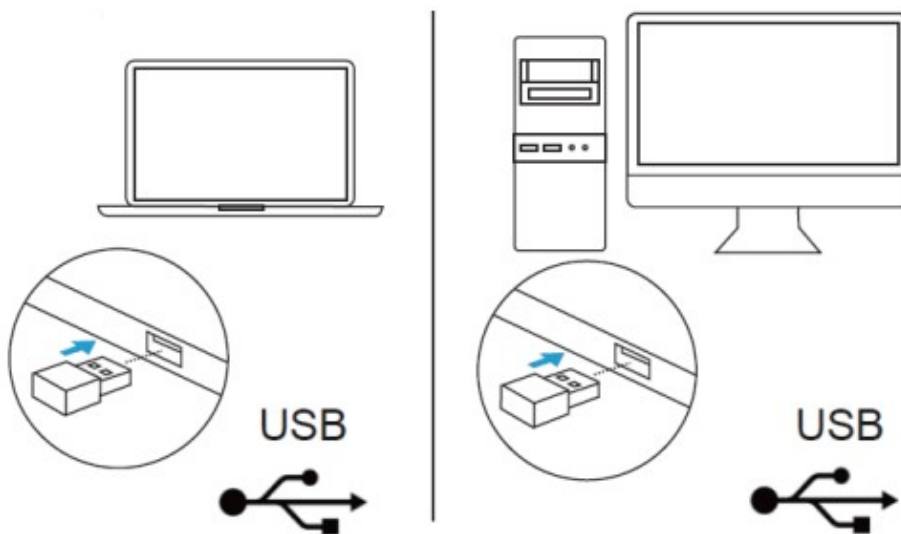
CHESONA Multi-Device Bluetooth
Keyboard and Mouse Combo



Contents

- 1 [How to connect with my desktop and phone together?](#)
- 2 [What do the indicators mean?](#)
- 3 [My S key stuck, what can I do?](#)
- 4 [How can I wake up the mouse?](#)
- 5 [My mouse suddenly stopped working when I using it, any suggestions?](#)
- 6 [Is it necessary to use the dongle for Win PC?](#)
- 7 [Can I switch the keyboard and mouse together by pressing the keyboard pairing button?](#)
- 8 [Documents / Resources](#)
- 9 [Related Posts](#)

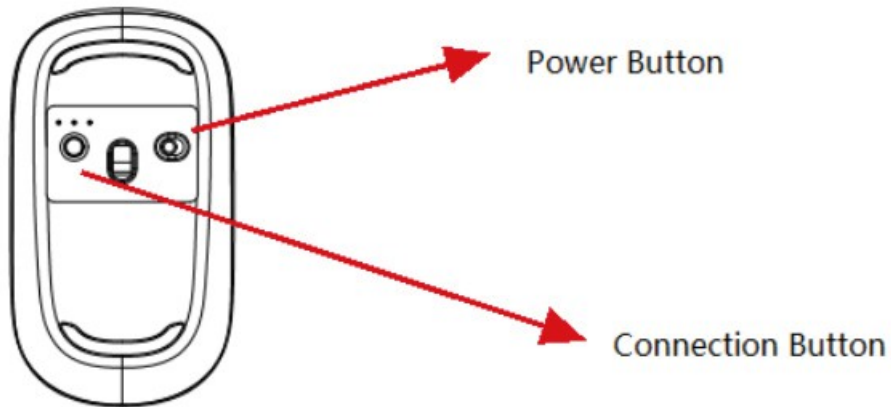
How to connect with my desktop and phone together?



Connect via 2.4GHz USB dongle:

For mouse:

- Fully charge the mouse.
- Switch ON/OFF to ON, the red power indicator will be on.
- Press the left & right & wheel button together for 3 seconds.
- Put the 2.4GHz USB dongle into the USB port of computer.
- Get the mouse close to the dongle and tap the connection button to make led left.

**For keyboard:**

- Fully charge the keyboard.
- Switch ON/OFF to ON.
- Put the 2.4GHz USB dongle into the USB port of computer. (Ignore it if done).
- Press the wifi key, the indicator will flash and get connected successfully.

Connect via Bluetooth:**For mouse:**

- Tap the connection button to make led middle or right, the BT indicator will flash.
- Go to your phone settings – Bluetooth, turn it on and select 'BT 5.0 Mouse' to pair.

For keyboard:

- Press the link1/ link2 key for 5 seconds, the BT indicator will flash.
- Go to your phone settings – Bluetooth, turn it on and select 'BT 5.0 Keyboard' to pair.

Note:

The keyboard and mouse are two devices and independent to work, so you can't only switch one device to expect both can work.

What do the indicators mean?



1. 2.4GHz Indicator

Greenlight will flash when pairing through the 2.4GHz dongle.

2. BT I Indicator

Blue light will flash quickly when pairing.

3. BT II Indicator

Blue light will flash quickly when pairing.

NOTE: The connection indicator of the keyboard will flash once every 3 seconds in order to remind you which connection way is using.

4. Caps Lock Indicator

The caps lock indicator will be green when caps lock is activated.

5. Power Indicator

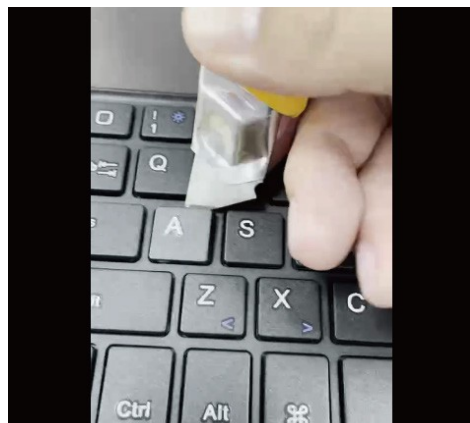
The power indicator will flash 1-4 times showing the battery status by pressing “Fn + battery key” together.

6. Power Switch

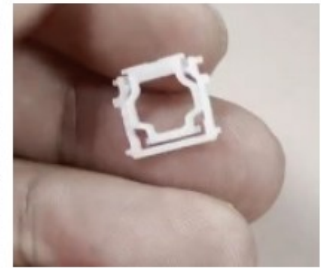
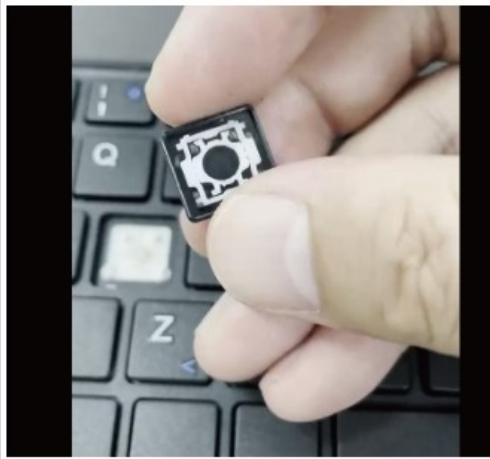
Push the switch to the right to turn on and to the left to turn off.

My S key stuck, what can I do?

There might be some dirt under the key, try to remove and clean it. Please refer to these images as below:
Use a knife to remove the cap;



Check the bottom inside of the cap, if it's damaged in physical.



When you remove the cap, there are two plastic frame and get them out, one is big, one is small.
When disassembling, you should first disassemble the lower big one, and when installing, install the upper small one first.

How can I wake up the mouse?

The mouse will enter sleep mode without used more than 10 min.
Click the left or right or wheel button, or move it to wake it up.

My mouse suddenly stopped working when I using it, any suggestions?

The focus of the mouse signal light is abnormal.
Try to lift the mouse again and put it down to refocus.

Or you can follow these steps:

Fully charge the mouse and turn it on.
Tap the left & right & wheel together, the pairing indicator will flash and the mouse will be initialed.
Insert the 2.4GHz USB dongle, choose the first access to pairing.
If you want to use Bluetooth, choose the second or third accesss to pairing.

Is it necessary to use the dongle for Win PC?

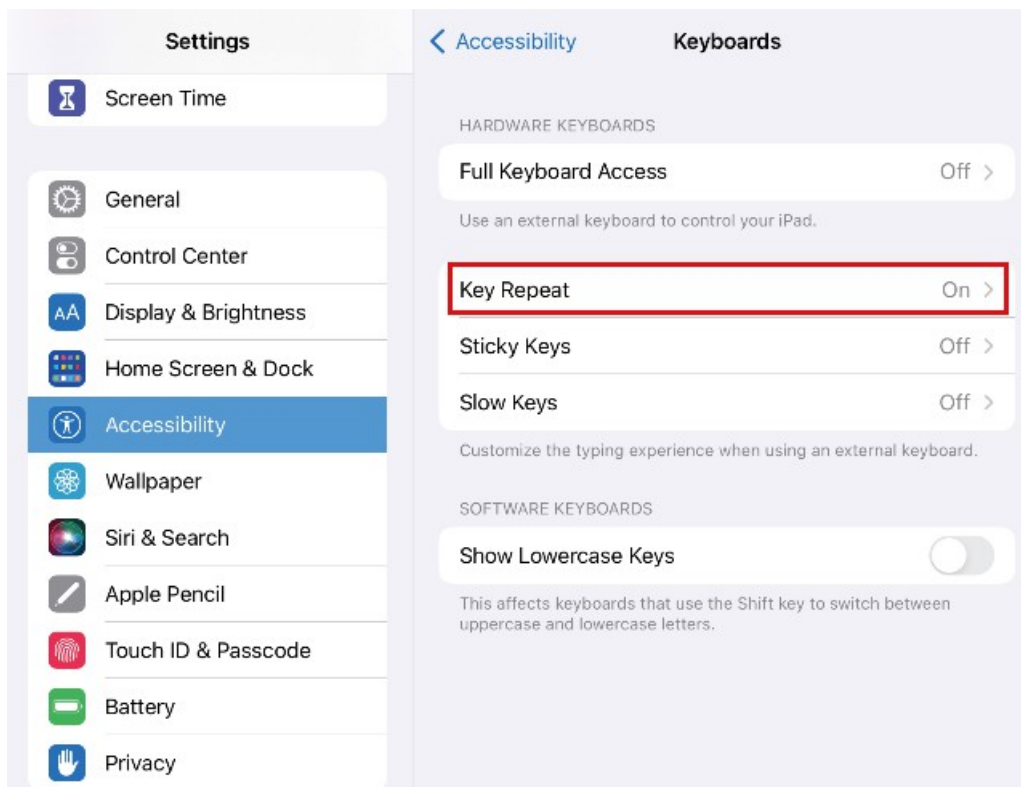
If you want to use the keyboard for desklop with Win OS, the 2.4GHz USB dongle is necessary to use for pairing.
Unless there is a Bluetooth transmitter, you can connect it by Bluetooth.

Can I switch the keyboard and mouse together by pressing the keyboard pairing button?

They are two devices and independent to work. If you want to switch one device to another, you can press the keyboard pairing button and then turn over the mouse to tap the pairing button.
Please refer to the first QA, thanks.

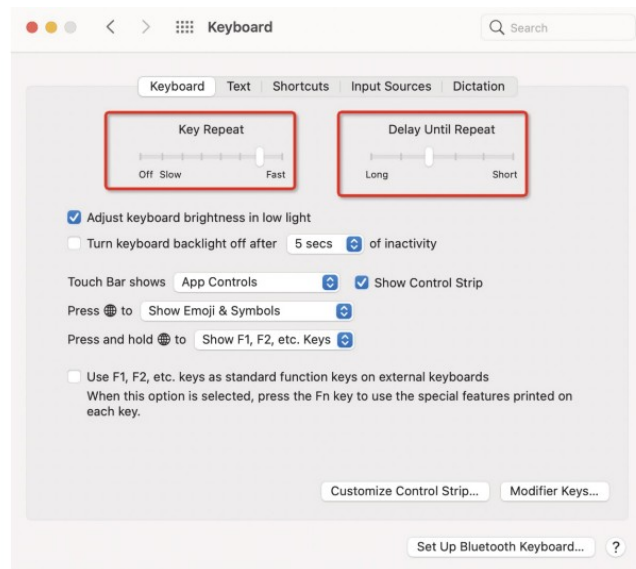
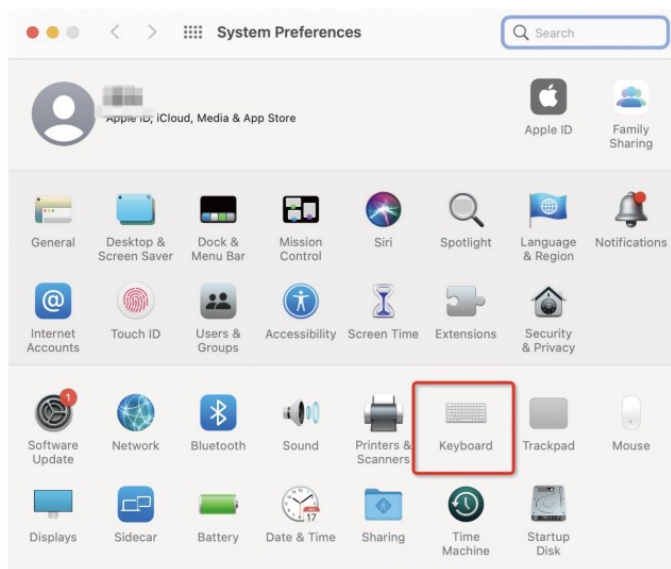
When I press delete key/direction key for several seconds, it's unable to delete characters continuously / move the cursor position quickly, how to fix it?

In iPad: Go to iPad Settings – Accessibility – Keyboards – Key repeat, toggle it on.



In Mac: Go to System Preferences – Keyboard,

1. Key Repeat to adjust to fast.
2. Delay Until Repeat adjusts to short.



Documents / Resources



[CHESONA Multi-Device Bluetooth Keyboard and Mouse Combo](#) [pdf] User Manual
Multi-Device Bluetooth Keyboard and Mouse Combo