

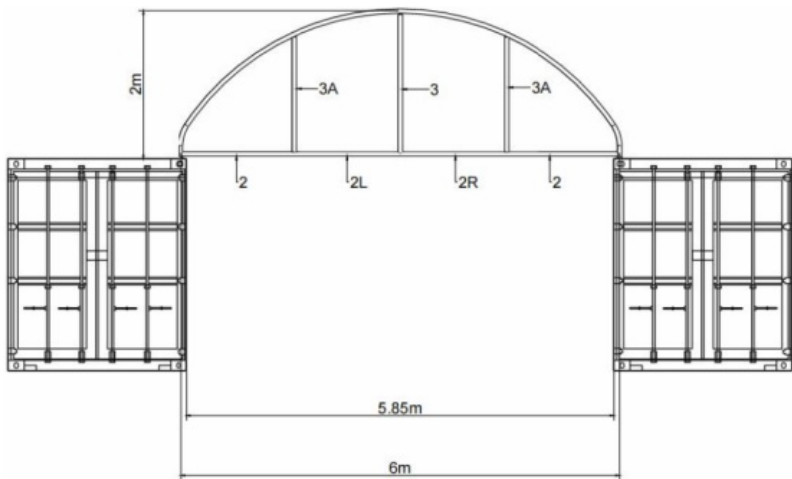
CHERY INDUSTRIAL C20 Half Panel for Container Shelters Installation Guide



Contents [[hide](#)]

- 1 [Half Endwall for C20 with frame](#)
- 2 [Half end wall for C20](#)
- 3 [Documents / Resources](#)
 - 3.1 [References](#)

Half Endwall for C20 with frame

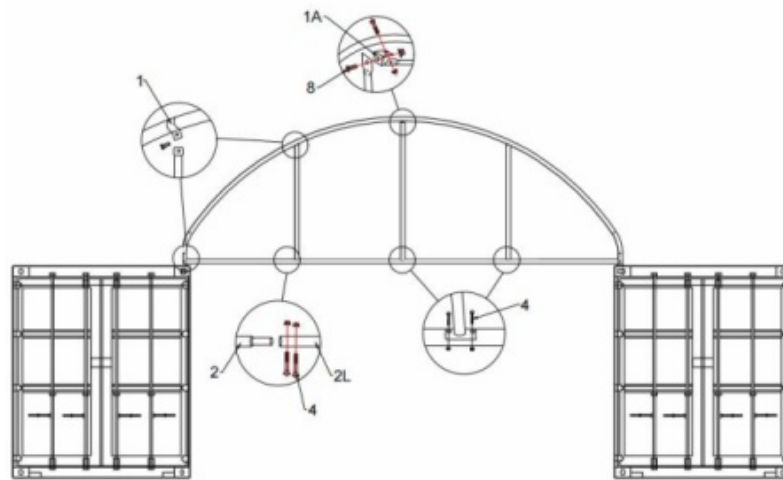
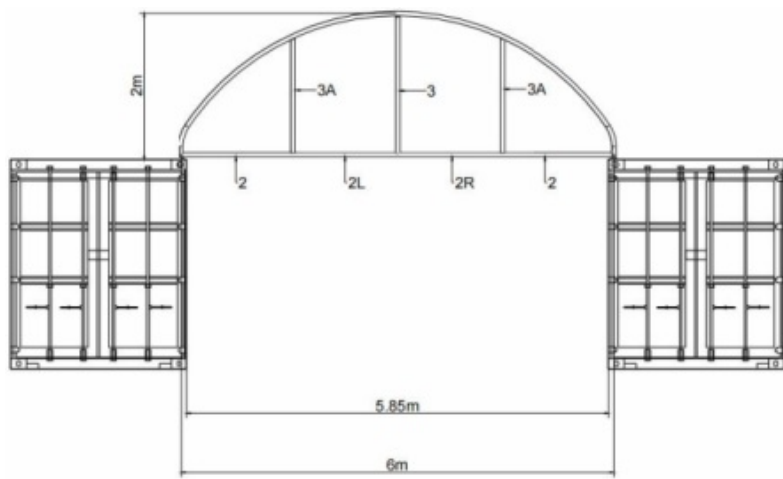


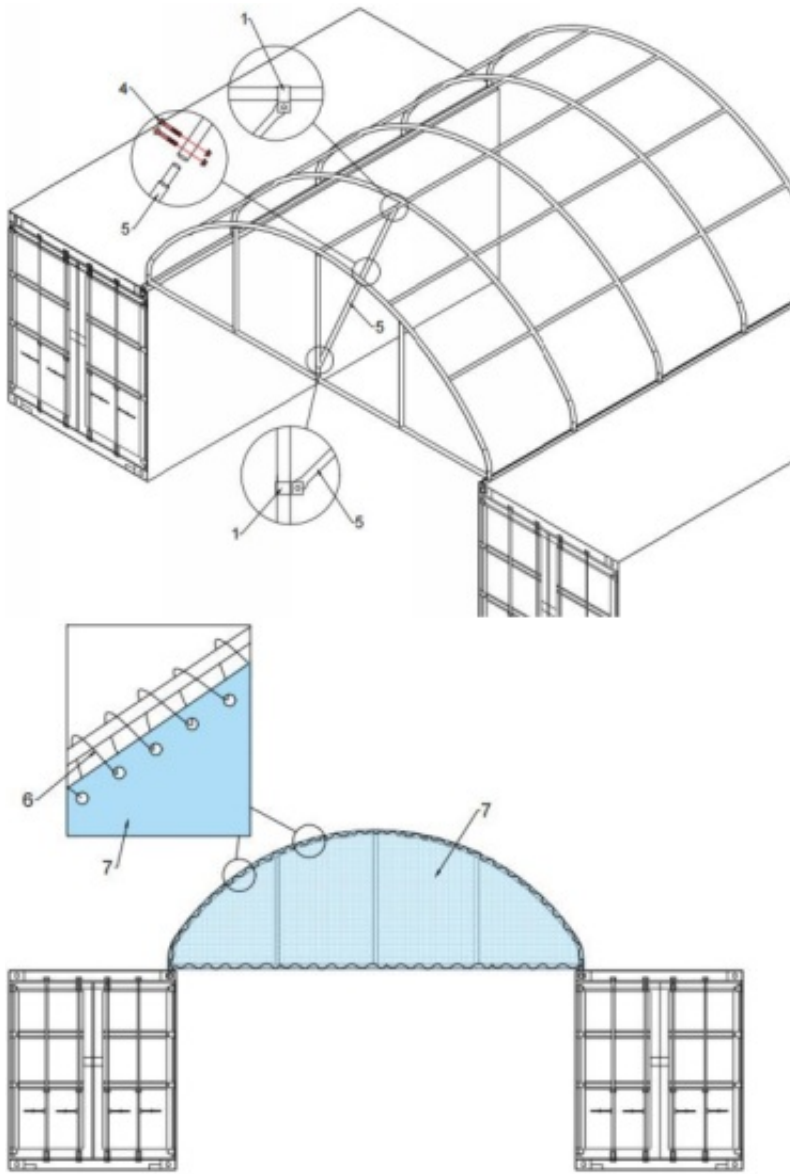
NO.	Description	QTY
-----	-------------	-----

1	Clips $\Phi 45$	7
1A	2 holes angle iron	1
2	Side beam	2
2L	Middle Beam at left	1
2R	Middle Beam at right	1
3	Suspending tube at middle	1
3A	Suspending tube at side	2
5	Braced Tube	1Group
4	Carriage bolts $\phi 8 \times 60$	8
6	Rope	1
7	Half Cover	1
8	Bolts 10×30	1

Find out the spare parts, and check the qty and function according to the list above.

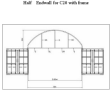
Half end wall for C20





Assembly the frame first according to above drawing. Then use ropes No.6 to tie the cover to the frame.

Documents / Resources

	<p>CHERY INDUSTRIAL C20 Half Panel for Container Shelters [pdf]</p> <p>Installation Guide</p> <p>C20 Half Panel for Container Shelters, C20, Half Panel for Container Shelters, for Container Shelters, Container Shelters</p>
-------------------------------------------------------------------------------------	------------------------------------------------------------------------------------------------------------------------------------------------------------------------------------------------------------------------------------------------

References

- [User Manual](#)

Leave a comment

Your email address will not be published. Required fields are marked *

Comment *

Name

Email

Website

☐ Save my name, email, and website in this browser for the next time I comment.

Post Comment

Search:

e.g. whirlpool wrf535swhz

Search

[Manuals+](#) | [Upload](#) | [Deep Search](#) | [Privacy Policy](#) | [@manuals.plus](#) | [YouTube](#)

This website is an independent publication and is neither affiliated with nor endorsed by any of the trademark owners. The "Bluetooth®" word mark and logos are registered trademarks owned by Bluetooth SIG, Inc. The "Wi-Fi®" word mark and logos are registered trademarks owned by the Wi-Fi Alliance. Any use of these marks on this website does not imply any affiliation with or endorsement.