



Cheng Dian TP-1 3 In 1 Function Video Remote shutter and Phone Holder Bluetooth Connection User Manual

[Home](#) » [Cheng Dian](#) » Cheng Dian TP-1 3 In 1 Function Video Remote shutter and Phone Holder Bluetooth Connection User Manual 

Contents

- [1 Cheng Dian TP-1 3 In 1 Function Video Remote Shutter and Phone Holder Bluetooth Connection](#)
- [2 Specifications](#)
- [3 Bluetooth connection](#)
- [4 Use diagrams](#)
- [5 TURN ON](#)
- [6 Connect mobile phone](#)
- [7 Mobile phone stand](#)
- [8 Button function](#)
- [9 Take photos and record videos](#)
- [10 Charging diagram](#)
- [11 Parameter](#)
- [12 FAQ](#)
- [13 FCC](#)
- [14 Documents / Resources](#)
 - [14.1 References](#)
- [15 Related Posts](#)

Cheng Dian

Cheng Dian TP-1 3 In 1 Function Video Remote Shutter and Phone Holder Bluetooth Connection



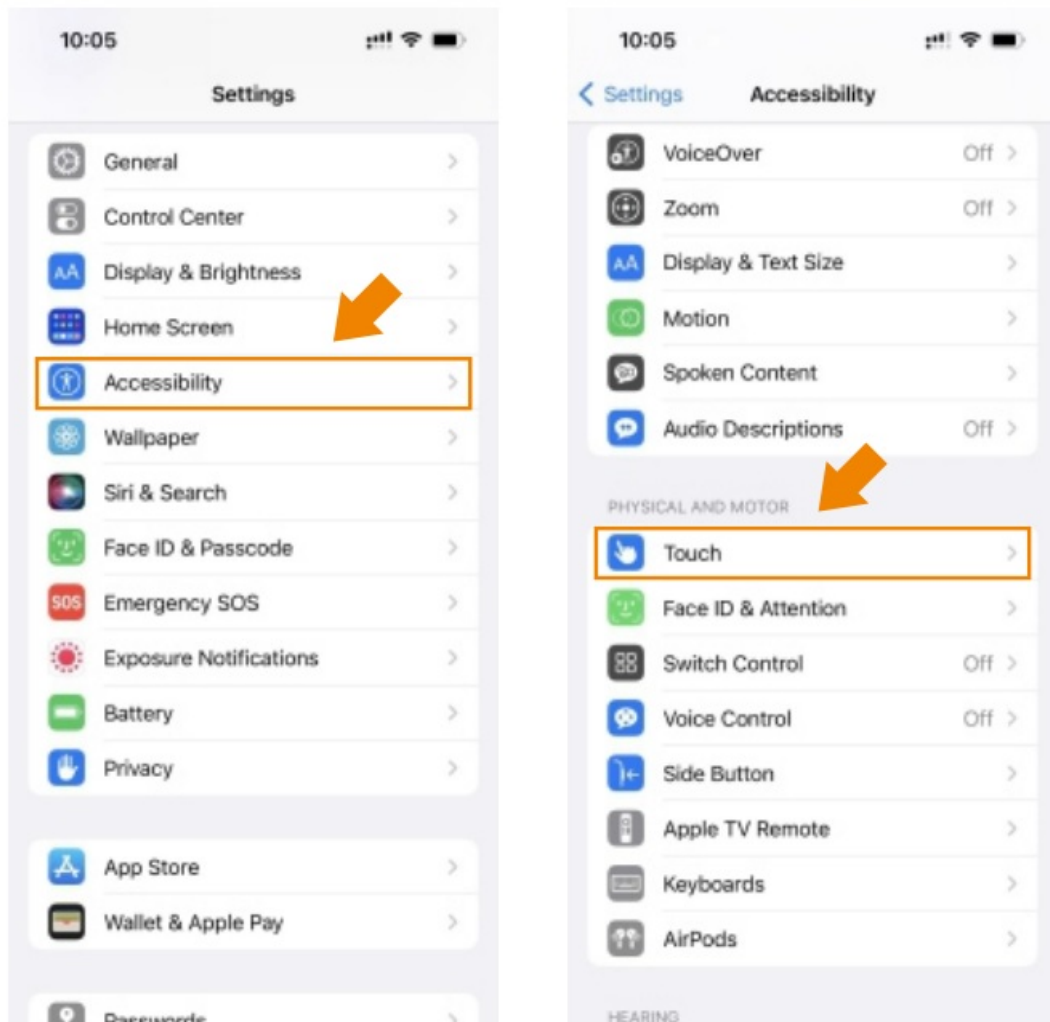
Specifications

- **Compliance:** Part 15 of the FCC Rules
- **Radiation Exposure:** Meets FCC radiation exposure limits for an uncontrolled environment
- **RF Exposure:** Can be used in portable exposure conditions without restriction

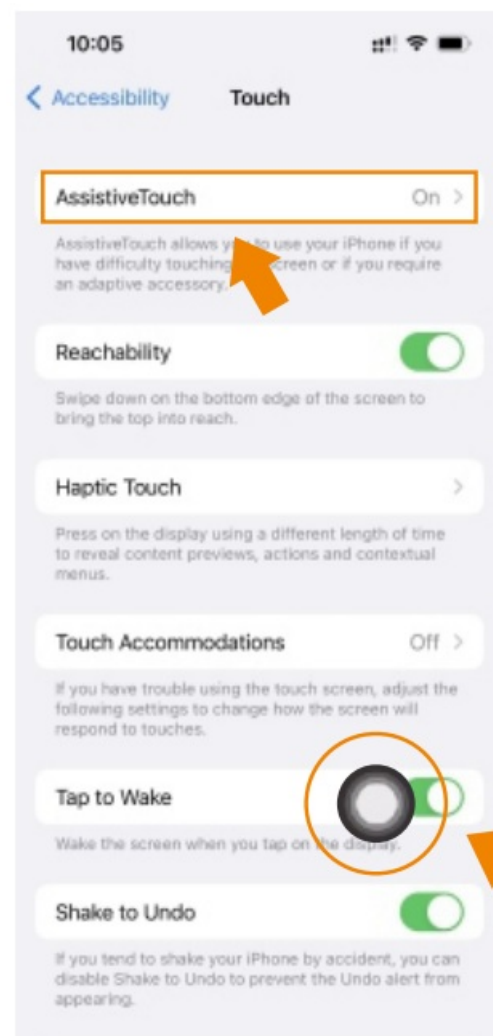
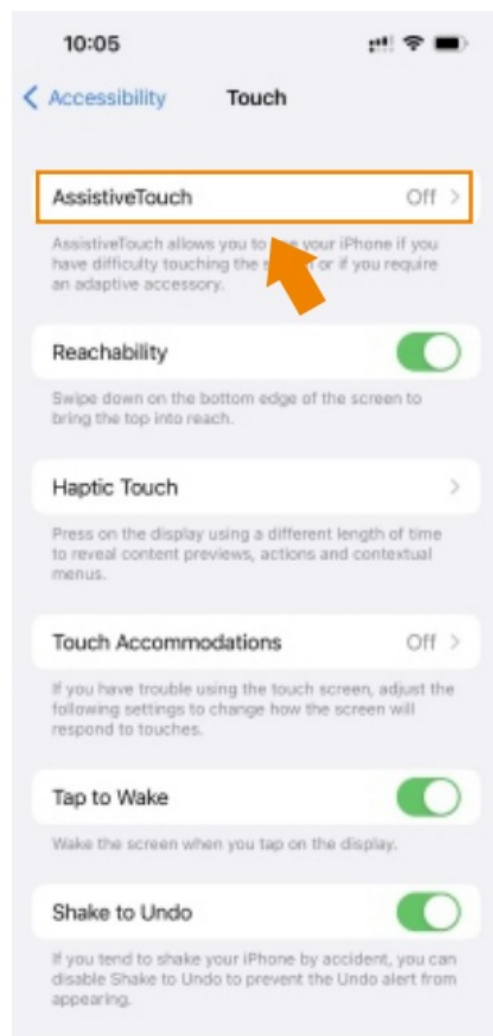
Bluetooth connection

NOTE: About iPhone In the case of Los you must make the following settings before connecting to Bluetooth

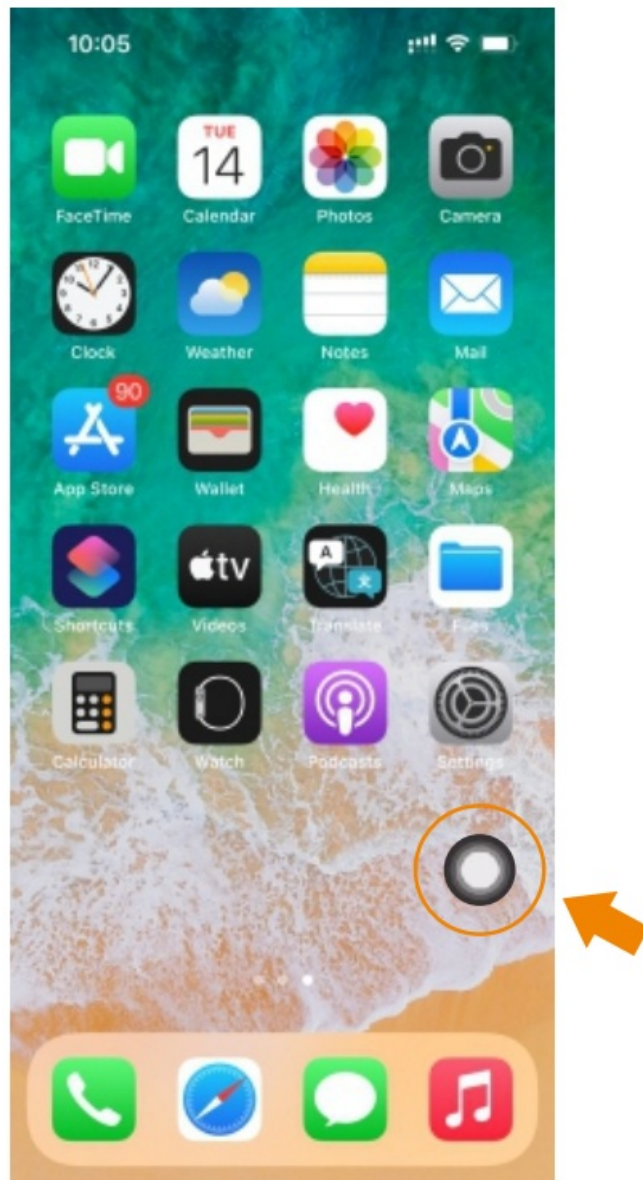
About iPhone Special reminders for iPhone users : Open the iPhone Settings – Accessibility Touch Assist Control is set to open state as shown below:



About iPhone until the following icon appears rsSpeci al reminders for iPhone user
Open I Phone Settings – Accessibility Touch Assistive Touch set it to on See below:



until the following icon appears



WARNING: You need to make sure the 10S software is above V14.8 5.

PACKAGE



Charging box Remote controller



Type-C
charging cable



User manual

Use diagrams



LED indicator

Type-C charging port



Button



Charging

TURN ON



Press and hold the middle button for 1 second till the blue light turn on



Connect mobile phone

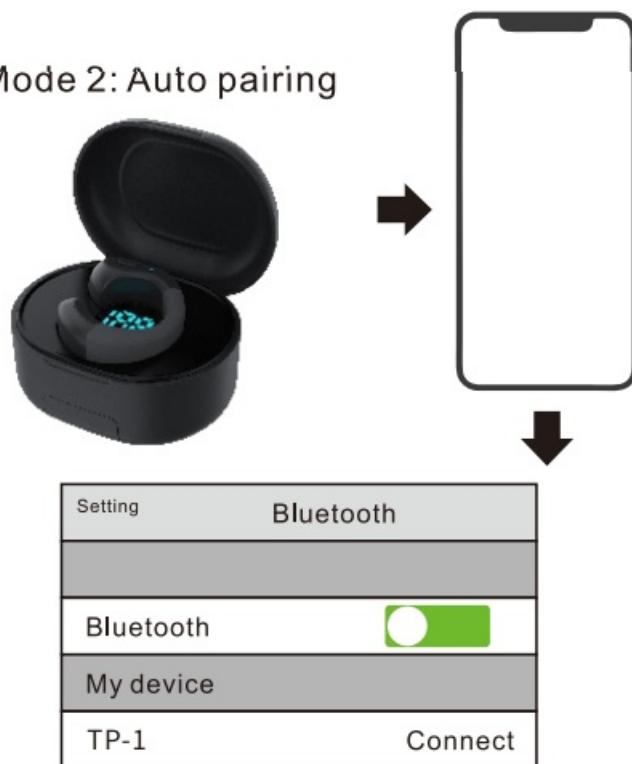
Mode 1: Manually



Setting	Bluetooth
Bluetooth	<input checked="" type="checkbox"/>
My device	
TP-1	Connect

In the off state, press and hold the middle for 1 second till the blue light flashes rapidly, the controller is in a pairing state, then turn on the Bluetooth of the mobile phone and search for the mobile phone, the Bluetooth menu shows: TP-1 and click to complete the Bluetooth connection. If you can't find it, please try to turn off the mobile phone's Bluetooth and turn it on again until the connection is complete

Mode 2: Auto pairing



Turn on your mobile phone, the controller will automatically connect to the last mobile phone you connected before (make sure the Bluetooth of the mobile is turned on)

Mobile phone stand



Take the bottom shelf slides out as the phone stand



battery level display for the charging case

Button function



Take photos and record videos



In photo or video mode, press and hold any of these 2 keys will start or end taking pictures or video recording
Short press the middle button to focus

Low battery warning

- Controller When the battery is low, the red light flashes slowly
- Charging box When the battery is low, the blue light flashes slowly

Charging diagram



Charging	Fully charged
Red light flashing	Red light on



Charging	Fully charged
Blue light on	Blue light off

Automatic shutdown function

1. Normal pairing or disconnecting from the mobile phone to enter the pairing, If the mobile phone is not connected within 5 minutes, it will automatically shut down
2. If there is no operation after 30 minutes it will automatically shut down

Parameter

Remote controller	
Bluetooth version	Ver.5.0
Bluetooth power	class(-6dBm- +4dBm)
Frequency (Hz)	2.40GHz 2.48GHz
Bluetooth name	TP I
Bluetooth ID	0000
Bluetooth distance	10m
Bluetooth battery capacity	25mAh
Bluetooth charging time	1h
Charging box	
Charging box battery capacity	200mAh
Charging box charging time	1.5h

FAQ

Frequently Asked Questions (FAQ)

- **Q: Why it doesn't work or scroll?**

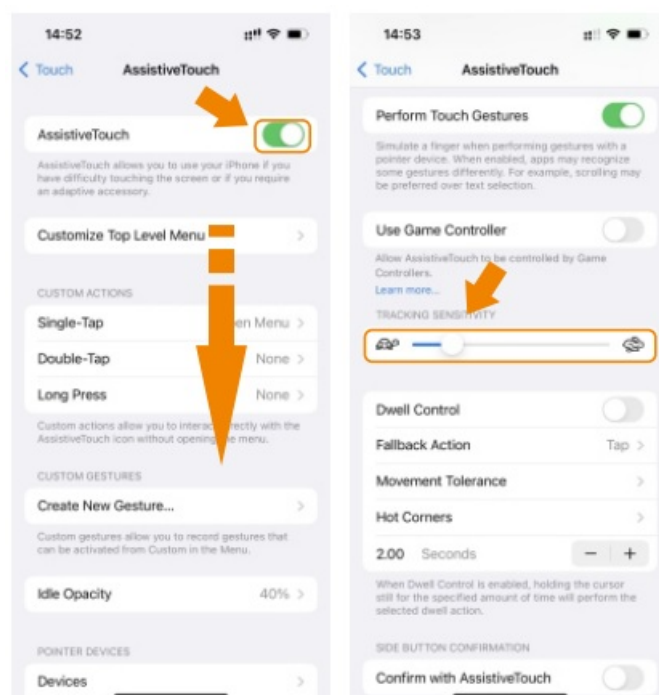
Please check: if there are any of the following problems

- 1. We're asking you to try using one opposite the direction Ring.
 - **a)** When you Just open TikTok. It will refresh when you press the up button for the first time.

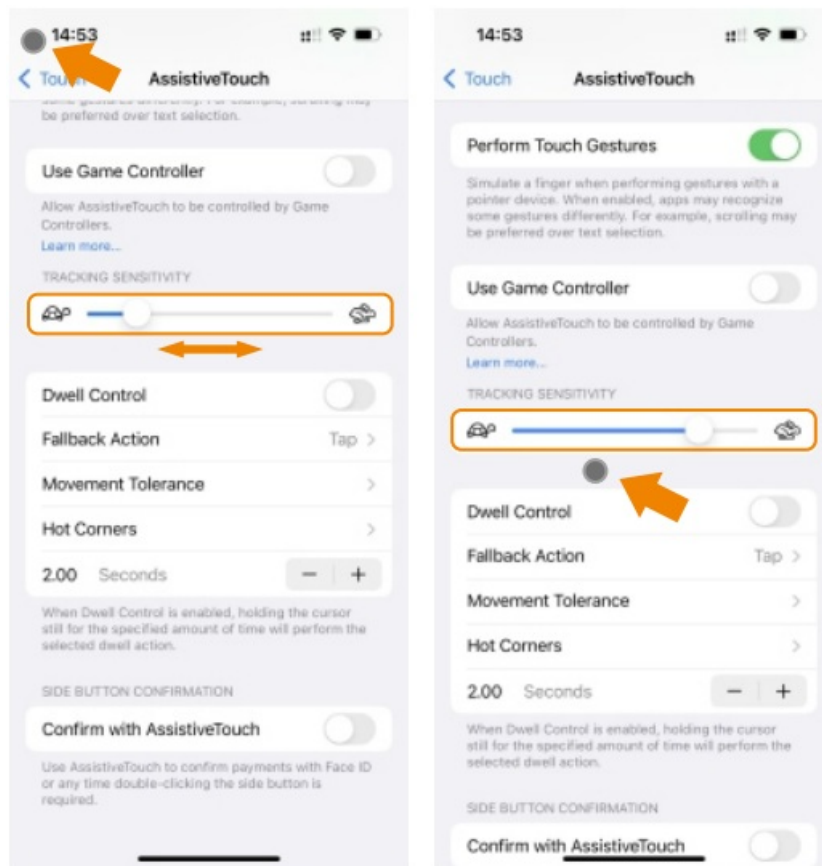
- **b)** Then if you need to watch the next video, just press the down button.
 - **c)** If you need to go back to the previous video, press the up button.
 - **d)** When you go back to the live video, press the up button, and it will refresh again.
 - **e)** Press the down button again, and other new videos will appear. So please note the direction of the scroll remote ring use.
- 2. Make sure your phone has been connected to the remote ring via bluetooth, if your phone is an iPhone, you also need to pay attention to the following issues
 - **a)** The AssistiveTouch button must be turned on when using the iPhone or iPad, it will leave a circle on the screen all the time
 - **b)** The specific settings: open Settings>Accessibility>touch>turn on Assistive touch
 - **c)** You need to make sure the iOS software is above 14.0_8.5
 - **Q: Can it work on a Kindle?**
 - A: It doesn't work for Kindle devices, But it can work for Kindle App.
 - **Q: Can it create TikTok videos?**
 - A: Can not, it can't be used to create videos, it can scroll up and down live video, like video, adjust the volume. And you can control your phone to take photos and videos remotely.
 - **Q: Can it be used to start and stop "live on TikTok?"**
 - A: It can't start and stop "live" on TikTok.
 - **Q: Does this phone remote control also work for Facebook and Instagram?**
 - A: It doesn't work for Facebook and Instagram.
 - **Q: Does work with Spotify?**
 - A: It doesn't work for Spotify.

The iOS system cannot utilize the user manual

When the up or down buttons on the remote control for the iOS system are not functioning, please follow the steps below for troubleshooting.



Adjust the slider to position the screen cursor closer to the center of the screen. Note: If the cursor is positioned in the top left corner or bottom right corner of the screen, it can cause the remote control function to malfunction.



In the novel app mode, when pressing the down button, if the content scrolls too quickly, you can adjust the slider closer to the turtle icon to slow down the scrolling speed

FCC

FCC Warning

This equipment has been tested and found to comply with the limits for a Class B digital device, according to part 15 of the FCC Rules. These limits are designed to provide reasonable protection against harmful interference in a residential installation. This equipment generates, uses, and can radiate radio frequency energy and, if not installed and used under the instructions, may cause harmful interference to radio communications. However, there is no guarantee that interference will not occur in a particular installation. If this equipment does cause harmful interference to radio or television reception, which can be determined by turning the equipment off and on, the user is encouraged to try to correct the interference by one or more of the following measures:

- Reorient or relocate the receiving antenna.
- Increase the separation between the equipment and the receiver.
- Connect the equipment to an outlet on a circuit different from that to which the receiver is connected.
- Consult the dealer or an experienced radio/TV technician for help.

Caution: Any changes or modifications to this device not explicitly approved by the manufacturer could void your authority to operate this equipment.


This device complies with part 15 of the FCC Rules.

Operation is subject to the following two conditions:

1. this device may not cause harmful interference,
2. this device must accept any interference received, including interference that may cause undesired operation.

This equipment complies with FCC radiation exposure limits set forth for an uncontrolled environment. The device has been evaluated to meet general RF exposure requirements. The device can be used in portable exposure conditions without restriction.

Documents / Resources

	<p>Cheng Dian TP-1 3 In 1 Function Video Remote shutter and Phone Holder Bluetooth Connection [pdf] User Manual</p> <p>TP-1 3 In 1 Function Video Remote shutter and Phone Holder Bluetooth Connection, TP-1, 3 In 1 Function Video Remote shutter and Phone Holder Bluetooth Connection, shutter and Phone Holder Bluetooth Connection, Holder Bluetooth Connection, Bluetooth Connection</p>
---	--

References

- [User Manual](#)