

Cheluzhe Technology HE-211 7 Portable Touchscreen GPS Navigation User Manual



Cheluzhe Technology HE-211 7 Portable Touchscreen GPS Navigation User Manual

[Home](#) » [Cheluzhe Technology](#) » Cheluzhe Technology HE-211 7 Portable Touchscreen GPS Navigation User Manual 

Contents

- 1 Cheluzhe Technology HE-211 7 Portable Touchscreen GPS Navigation
- 2 BT connection
- 3 Description
- 4 Documents / Resources
 - 4.1 References

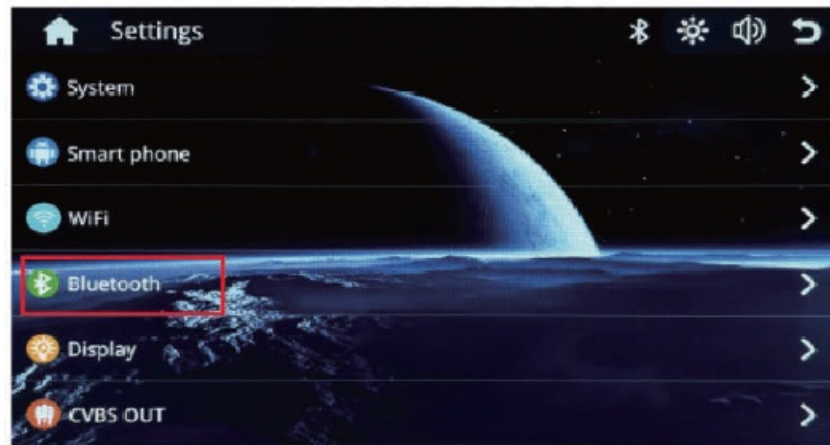
Cheluzhe Technology

Cheluzhe Technology HE-211 7 Portable Touchscreen GPS Navigation

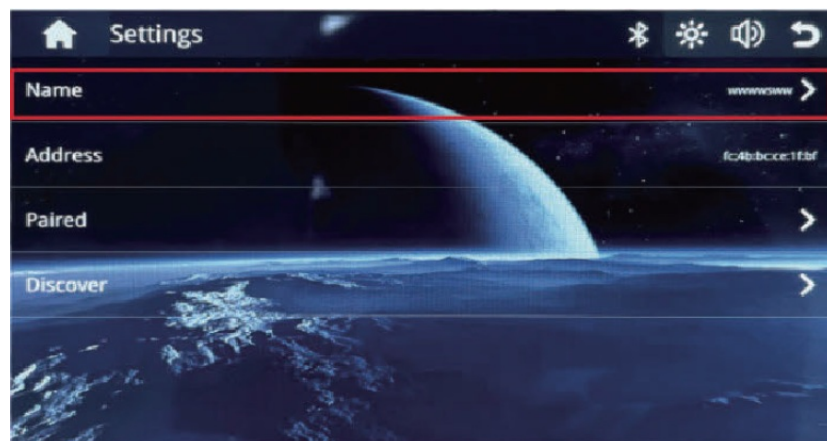


BT connection

1. Click the settings icon to enter the settings page. and then click the BT icon to enter the BT connection page.



2. Search the BT name of the device, the phone will pop up the relative matching code, click and confirm to match and connect.



Description



- Portable vehicle smart screen
- 7 inches
- **Resolution:** 1024×600
- **Interface:** USB/T Card/avin/audio/CD
- **Working power supply:** 14V cigarette lighter
- **Working power range:** 12-24v
- **Working current:** Max 2A
- **Frequency transmission:** 87.5-108MHZ
- Built-in 3W hom

- Support wireless/wired Apple Carplay
- Support wireless/wired Android Auto Easy to install/hang
- **Working temperature:** -20°C-+ 70C
- USB/MP3/MPA/AVIDIVXWMA/RMVB/MKVPMPIFLV/M2TSMPGIJPEGIPIFIPNGFLAC APEIAAC

For iphone mirror link (i-mirror)



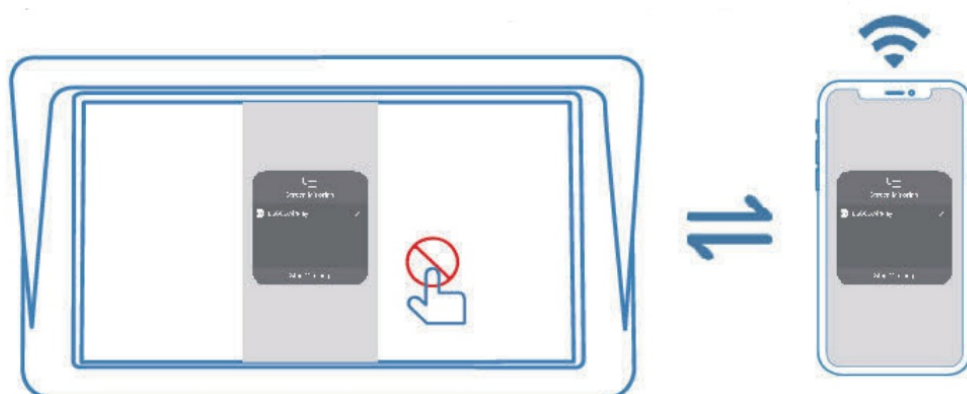
1. For wired mirror link

Use the data cable to connect the device to the Apple phone, and confirm the authorization request on the phone.



2. For wireless mirror link

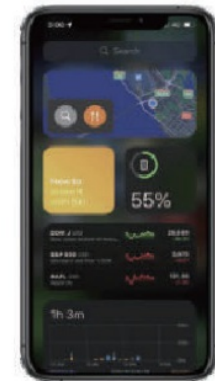
Please use your iPhone to search the device Wi-Fi named "DIRECT-phone link-and" and connect to it, password:88888888. Select "Car-AirPlay in Screen Mirroring from your iPhone.



You can't control your samrtphone here

Compatible for carplay

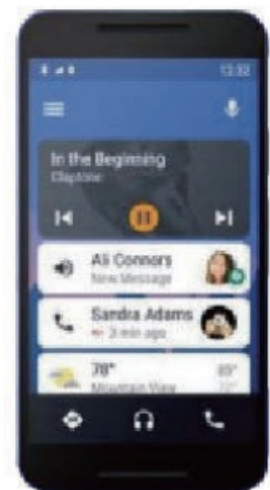
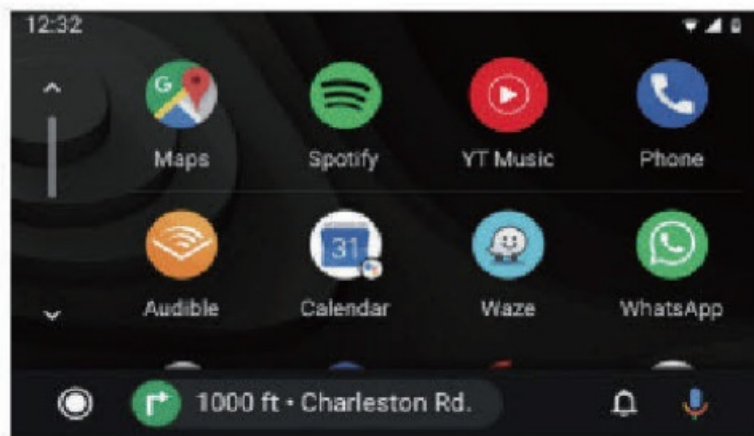
1. Please choose "Carplay" from settings-smart phone-apple device" before using Carplay.
2. Please use your iphone to search this device Bluetooth* which is named " Carb**** and confirm the authorization request on your iphone.
3. Click the icon on the device to complete the carplay connection.



Compatible with Android Auto

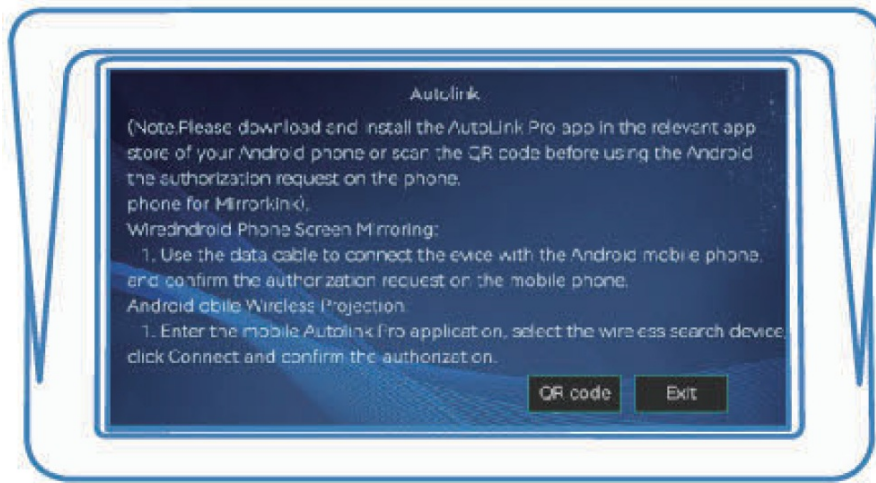
This feature is not supported in all countries, and "Google Play services need to be available locally.

1. Need to download and install "Android auto" software in "Google Play*.
2. A mobile phone with Android 6.0 or higher is needed.
3. Open the " Android auto" software on the phone.
4. After the connection is successful. You can use the functions provided by Android Auto on the car.
5. Click the icon on the device to complete the Android auto connection.



Note: Before using this function, please make sure that you have installed the "Auto Link Pro" app. (you can download the "Auto Link Pro" app from the Google Play Store.

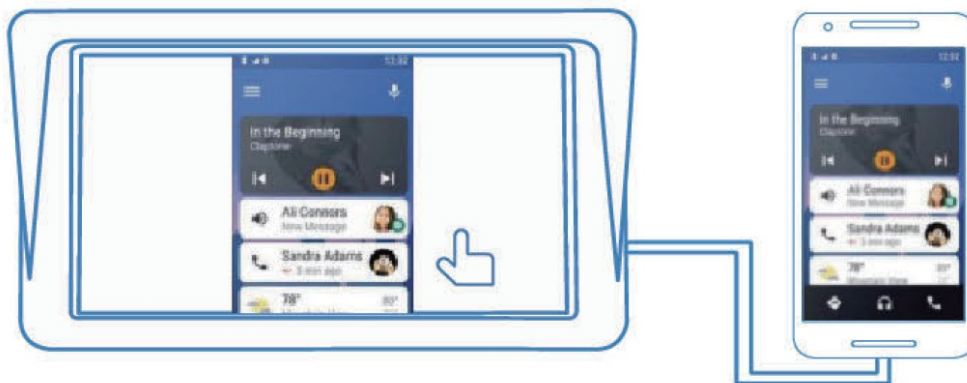
For Android mirror link(A-mirror)



Note: Please download and install the “Autolink Pro” app in the relevant app store of your Android phone or scan the QR code before using the Android authorization request on the phone.

1. For wired mirror link

Use the data cable to connect the device to the Android mobile phone and confirm the authorization request on the mobile phone.



2. For wireless mirror link

Enter the mobile Autolink Pro application, select the wireless search device, click Connect and confirm the authorization.

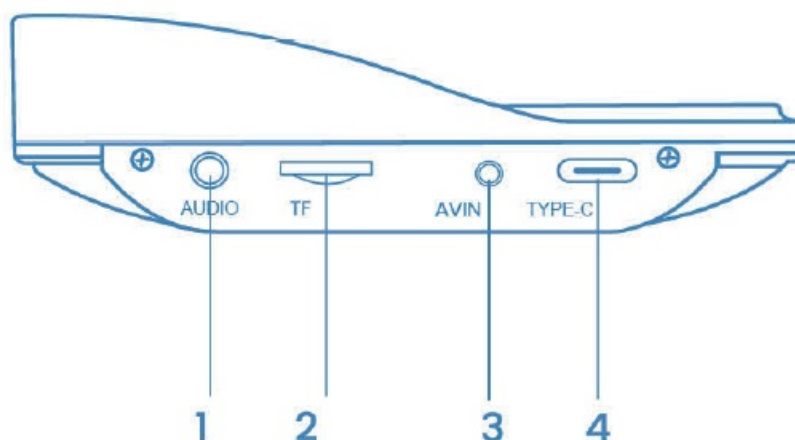
Sound transmission to car horn

This unit has a built-in speaker. If you want to make the sound louder, you can transfer it to your car's speakers.

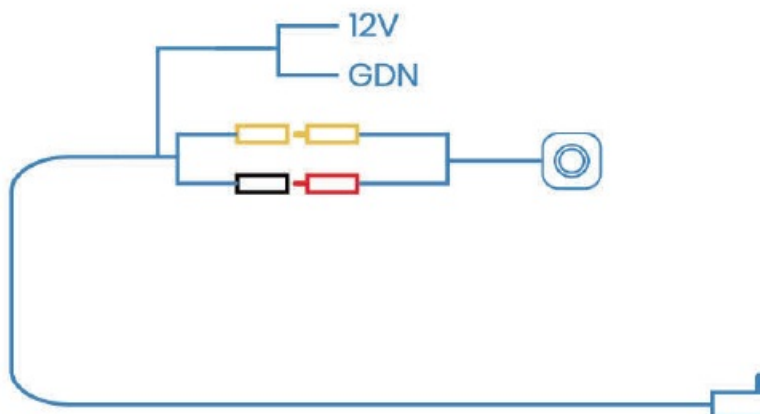


1. By FM radio transmitter-set the some FM radio channel on the unit and your car's radio. (please avoid using the channel to be occupied by the FM station)
2. By AUX cable – plug the AUX cable into the unit audio port and your car's original AUX port if your car has one.

Reversing camera installation method



1. AUDIO
2. TF card socket
3. AVIN interface
4. TYPE-C



common problem

1. The FM transmitter has poor signal and noise interference.
 1. **Answer.**
If the FM transmission signal is poor. you need to fix the car radio and plug an antenna. and organize the wiring harness to avoid interference in the frequency band.
2. Wireless Carplay often disconnects or doesn't work
 1. **Answer:**
When connecting to carplay, do not connect the phone to other wireless networks to avoid carplay connection
3. The bracket is not strong, the suction cup adhesion is not enough and the adhesion is unstable under high

temperatures.

1. **Answer:**

When sticking, pay attention to keeping the sticky position clean and dry to avoid the occurrence of bub~as and unstable stickiness

4. The bluetooth™ Is out of sync, the caller can't hear the sound or there is noise

1. **Answer:**

Make sure that the mic position is not blocked by foreign objects 5.

Disclaimer

Android Auto™™ and the Google Play™ logo are trademarks of Google Inc. Android is a trademark of Google Inc. Apple, Apple CarPlay® the Apple logo are trademarks of Apple Inc., registered in the U.S. and other countries. App Store is a service mark of Apple Inc., registered in the U.S. and other countries. iOS is a trademark or registered trademark of Cisco in the U.S. and other countries and is used under license.

FCC Statement

This equipment has been tested and found to comply with the limits for a Class B digital device, under part 15 of the FCC Rules. These limits are designed to provide reasonable protection against harmful interference in a residential installation. This equipment generates, uses and can radiate radio frequency energy and, if not installed and used by the instructions, may cause harmful interference to radio communications. However, there is no guarantee that interference will not occur in a particular installation.

If this equipment does cause harmful interference to radio or television reception, which can be determined by turning the equipment off and on, the user is encouraged to try to correct the interference by one or more of the following measures:

- Reorient or relocate the receiving antenna.
- Increase the separation between the equipment and the receiver.
- Connect the equipment to an outlet on a circuit different from that to which the receiver is connected
- Consult the dealer or an experienced radio/TV technician for help.

caution: Any changes or modifications to this device, not e.:. explicitly approved by the manufacturer could void your authority to operate this equipment.

This device complies with port 15 of the FCC Rules.

Operation is subject to the following two conditions:

1. This device must not cause harmful interference, and
2. this device must accept any interference received, including interference that may cause undesired operation.

RF Exposure Information

This equipment complies with FCC radiation exposure limits set forth for an uncontrolled environment. This equipment should be installed and operated with a minimum distance of 20cm between the radiator and your body.

Documents / Resources



[Cheluzhe Technology HE-211 7 Portable Touchscreen GPS Navigation](#) [pdf] User Manual
HE-211 7 Portable Touchscreen GPS Navigation, HE-211, 7 Portable Touchscreen GPS Navigation, Touchscreen GPS Navigation, GPS Navigation, Navigation

References

- [User Manual](#)

Manuals+, Privacy Policy

This website is an independent publication and is neither affiliated with nor endorsed by any of the trademark owners. The "Bluetooth®" word mark and logos are registered trademarks owned by Bluetooth SIG, Inc. The "Wi-Fi®" word mark and logos are registered trademarks owned by the Wi-Fi Alliance. Any use of these marks on this website does not imply any affiliation with or endorsement.