



[Home](#) » [Charnwood](#) » **charnwood SS18F Scroll Saw Owner's Manual** 



## Contents [\[ hide \]](#)

- [1 charnwood SS18F Scroll Saw](#)
- [2 GENERAL SAFETY RULES](#)
- [3 Overview of Scroll Saw](#)
- [4 Unpacking](#)
- [5 Troubleshooting](#)
- [6 Declaration of Conformity for CE Marking](#)
- [7 Charnwood SS18F Parts List](#)
- [8 Charnwood SS18F Parts Drawing](#)
- [9 Documents / Resources](#)
  - [9.1 References](#)

**charnwood**

**charnwood SS18F Scroll Saw**



## GENERAL SAFETY RULES



**WARNING:** Do not attempt to operate the machine until you have read thoroughly and understood completely all instructions, rules, etc. contained in this manual. Failure to comply may result in accidents involving fire, electric shock, or serious personal injury. Keep this owner's manual and review it frequently for continuous safe operation.

1. Know your machine. For your own safety, read the owner's manual carefully. Learn its application and limitations, as well as specific potential hazards pertinent to this machine.
2. Make sure all tools are properly earthed.
3. Keep guards in place and in working order. If a guard must be removed for maintenance or cleaning, make sure it is properly replaced before using the machine again.
4. Remove adjusting keys and spanners. Form a habit of checking to see that the keys and adjusting spanners are removed from the machine before switching it on.

5. Keep your work area clean. Cluttered areas and workbenches increase the chance of an accident.
6. Do not use in dangerous environments. Do not use power tools in damp or wet locations, or expose them to rain. Keep work areas well illuminated.
7. Keep children away. All visitors should keep a safe distance
8. from the work area.
9. Make workshop childproof. Use padlocks, master switches and remove starter keys.
10. Do not force the machine. It will do the job better and be safer at the rate for which it is designed.
11. Use the right tools. Do not force the machine or attachments to do a job for which they are not designed. Contact the manufacturer or distributor if there is any question about the machine's suitability for a particular task.
12. Wear proper apparel. Avoid loose clothing, gloves, ties, rings, bracelets, and jewellery that could get caught in moving parts. Non-slip footwear is recommended. Wear protective hair covering to contain long hair.
13. Always use safety glasses. Normal spectacles only have impact-resistant lenses. They are not safety glasses.
14. Do not over-reach. Keep proper footing and balance at all times.
15. Maintain the machine in good condition. Keep the machine clean for best and safest performance. Follow instructions for lubrication and changing accessories.
16. Disconnect the machine from the power source before servicing and when changing the blade.
17. Never leave the machine running unattended. Turn the power off. Do not leave the machine until it comes to a complete stop.
18. Do not use any power tools while under the effects of drugs, alcohol or medication.
19. Always wear a face or dust mask if the operation creates a lot of dust and/or chips. Always operate the tool in a well-ventilated area and provide for proper dust removal. Use a suitable dust extractor.



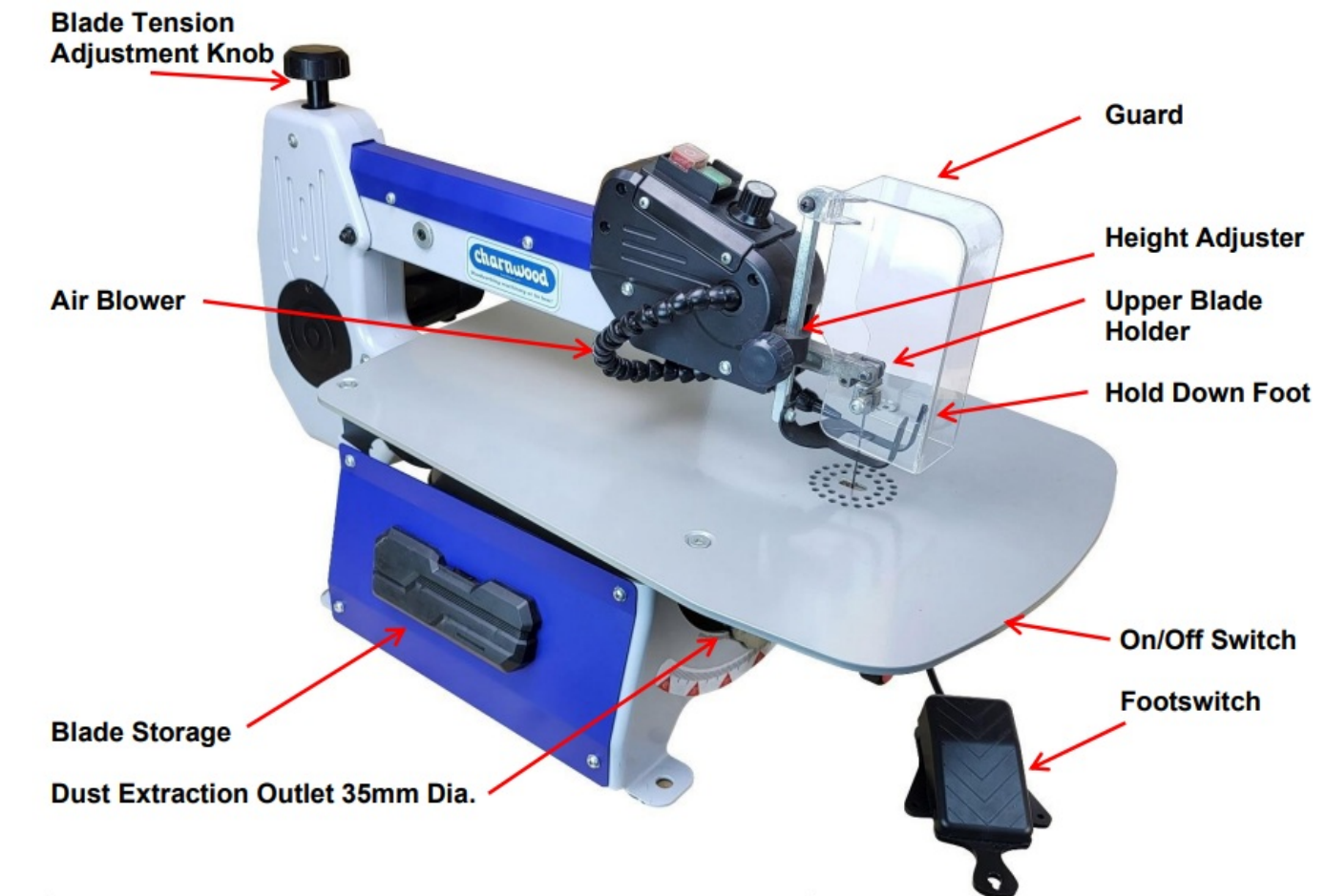
Risk of Injury: Never Reach Into A moving Part

Always Wear Eye Protection

Always Wear A Dust Mask

Always Wear Ear Protection

## Overview of Scroll Saw



## Charnwood SS18F Specification

Motor (DC) 240v, 50hz	120w
Blade Speed	550 – 1550 strokes per minute
Blade Length – Pin Type	127mm
Blade Length – Pinless Type	130mm
Table Size	541 x 349mm

Max. Cutting Depth (90 / 45 degrees)	50mm / 20mm
Throat Depth	457mm (18")
Table Tilt (Left & Right)	45 left to 45 degrees right
Dust Outlet	35mm Diameter
Weight	24kg
Manufacturer's Warranty	5 year
Rating	Hobby

### Rating Description

Hobby: Suitable for Weekend DIY'ers and woodworking enthusiasts.

Generally lighter weight machines with lower power ratings and smaller tooling capacities. Typically only ever used by one person for short periods of time or longer periods of time infrequently. Machinery should be well maintained in a clean, dry environment such as a home workshop, garage or timber shed.

Expected maximum use of 100 hours annually.

Please Note: Using a product in excess of its rating will void the manufacturer's free warranty.

### Unpacking



All items are contained in one cardboard carton.

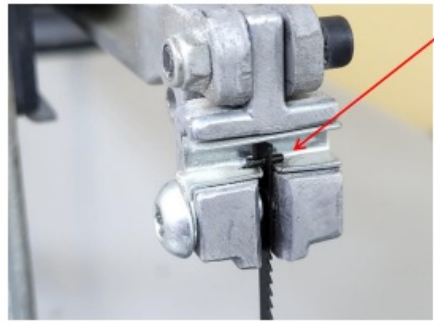
Carefully unpack and check that all items are included as in the cover image.

## Setting Up the Scroll Saw



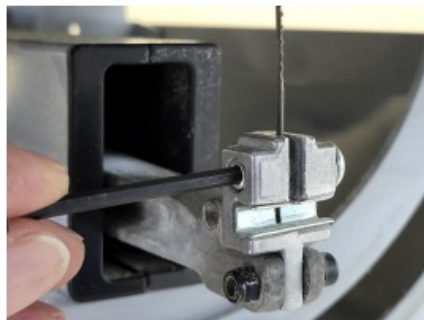
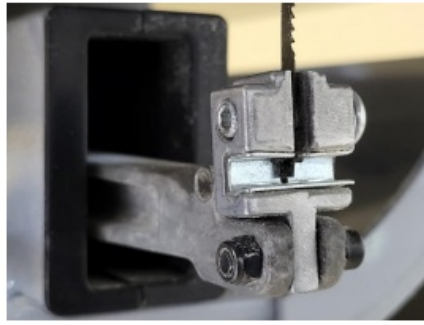
- It is normal for scroll saws to create a lot of vibration.
- Fixing the saw down to a heavy-duty workbench is recommended.
- Some people also find using a vibration-absorbing mat helps.
- There are four bench mounting points provided.
- There are two types of blade that can be used with this scroll saw.
- When fitting a blade, always ensure the teeth of the blade are pointing down and facing towards the direction of feed.
- Plain End Type Blade
- Pin End Type Blade





## USING PIN END BLADES

- The pin-type blade simply hooks over the upper and lower blade holder.
- Make sure the pins sit in the indentation.
- Pin-type blades are quick and easy to change, but are not available in very narrow widths for making the most intricate cuts.
- To Fit the blade:
  - Take the tension off the blade, by turning the blade tension knob anti clockwise.
  - Adjust the hold-down foot so it is at least 50mm above the main table.

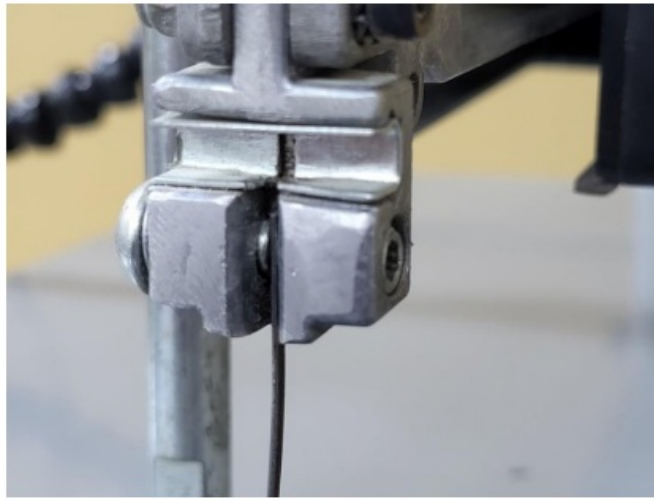


- Hook the lower pin over the lower blade holder.
- Press down lightly on the upper blade holder and hook the upper pin over the upper blade holder.
- To remove the blade, follow these instructions in reverse.
- Tension the blade using the tension knob.
- If the tension setting is not correct, it can be adjusted as follows:
- To increase tension to the blade, rotate the tension knob clockwise.
- To decrease tension, turn the knob anticlockwise.

## USING PLAIN END BLADES

- To use plain end blades use a 4mm Hex key to loosen the left hand grub screw on the lower clamp then slot a new blade in and tighten the grub screw.





Undo the screw on the right hand side of the upper clamp, slot the top of the blade in and tighten the screw.

Follow the blade tensioning instructions as for Pin End blades.

### Using the Scroll Saw

A suitable dust extractor should always be used.



- There are two ways to control the scroll saw:

- The control panel or The foot switch

### To use the control panel:

- Set the black rocker switch to position labelled 'I'
- Press the green 'On' button labelled 'I'
- Set the desired speed by turning the speed dial.
- Clockwise to increase the speed and anti-clockwise to decrease the speed.



### To use the foot switch:

Set the black rocker switch to position labelled 'II'

Press the green 'On' button labelled 'I'

**NOTE:** The saw will not start until you press the pedal.

Turn the speed dial clockwise to high speed marked 'H'

To start the saw, press down on the foot switch.

The foot switch controls the speed, the more you press down the foot switch the faster the speed of the blade.

Using the foot switch allows both hands to be used to guide the work piece and the convenience of stopping and starting without taking your hands off.



## **Regular Cutting**

Lower the hold down foot so that it is just above the height of the wood to be cut. It prevents the work piece lifting off the table during the upstroke of the blade.

Adjust the air blower so that it is pointing down at the cutting area. This enables a clearer view of the cut, particularly useful when following pencil lines.

Lower the Perspex guard.

## **Bevel Cutting**

The Yoke can be tilted 45 degrees to the left or right.

To adjust the angle of cut slacken off the locking knob.

Tilt the Yoke to the desired angle and tighten the locking knob.

Lower the perspex guard.

## Troubleshooting

Problem	Cause	Remedy
Machine does not start	Blown Fuse	Replace Fuse
	Loose switch terminal	Inspect back of switch
	Damaged / worn brushes	Replace motor brushes
	Faulty switch	Replace switch
Only starts when Green button is held down	Faulty switch	Replace switch
Blade snaps	Too much tension on blade	Replace blade
Rough cut	The blade is blunt	Replace Blade
Burnt edges on cut	The blade is blunt	Replace Blade

## Declaration of Conformity for CE Marking

Charnwood Declare that the Scroll Saw, Model SS18F

Conforms with the following Directives: Machinery Directive 2006/42/EC

Conforms with the following UK Regulations: Supply of Machinery (Safety) Regulations 2008

And further conforms to the machinery example for which the EC type examination Certificate No. MD SHES2306011052 and SHEM230600352101PTC have been issued by SGS-CSTC Technical Services Co., Ltd.

I hereby declare that the equipment named above has been tested and found to comply with the relevant sections of the above-referenced specifications. The machinery complies with all essential requirements of the directive.

Signed: Signed: 

Richard Cook, Director

Dated: 01/03/2024

Location: Leicestershire



Please dispose of the packaging for the product in a responsible manner. It is suitable for recycling. Help to protect the environment, take the packaging to the local amenity tip and place into the appropriate recycling bin.



 Only for EU countries

Do not dispose of electric tools together with household waste material!

In observance of European Directive 2002/96/EC on waste electrical and electronic equipment (EEE) and its implementation in accordance with national law, electric tools that have reached the end of their life must be collected separately and returned to an environmentally compatible recycling facility.

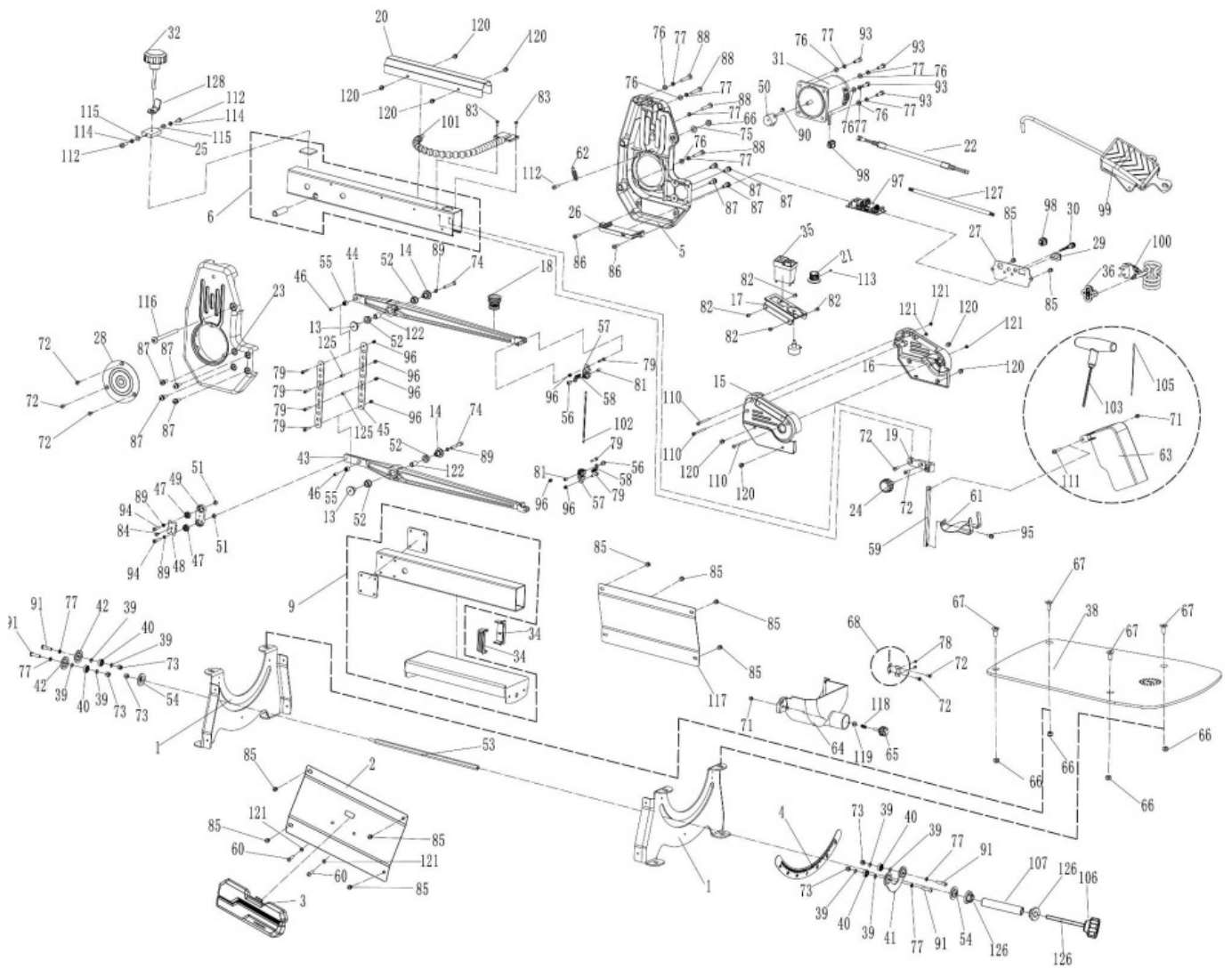
Your local refuse amenity will have a separate collection area for EEE goods

## **Charnwood SS18F Parts List**

No	Name	QTY	No	Name	QTY
	Panel	2	64	Lower shield	1
2	Left side plate	1	65	Index dial handle	1
3	Tool box	1	66	Hexagon lock nut	5
4	Steering ruler sticker	1	67	Hexagon socket screw M8 x 18mm	4
5	Right support	1	68	Hinge	1
6	Upper bracket	1	71	Hexagon lock nut M5	2
9	Lower bracket	1	72	Phillips screw M5 x 10mm	7
13	Thread bushing	2	73	Hexagon lock nut M6	5
14	Axle sleeve	2	74	Hexagon socket screw mM5 x 40mm	2
15	Left switch box	1	75	Flat washer 8	1
16	Right switch box	1	76	Flat washer 6	8
17	Switch panel	1	77	Spring washer 6	12
18	Gasbag	1	78	Phillips screw	2
19	Press foot support block	1	79	Hexagon socket screw M4 x 20mm	6
20	Upper arm guard plate	1	81	Bolt	2
21	Indicating knob	1	82	Phillips screw	4
22	Potentiometer connection	1	83	Phillips screw M4 x 10mm	3
23	Left support	1	84	Phillips screw	1
24	Compression lever handle	1	85	Phillips screw+spring washer+flat washer	14
25	Tensioner block	1	86	Phillips screw M5 x 20mm	2
26	Circuit board box	1	87	Phillips screw+spring washer+flat washer	8
27	Right support cover	1	88	Phillips screw M6 x 35mm	4
28	Left support cover	1	89	Spring washer	4
29	Switch	1	90	Hexagon socket screw M8 x 8mm	1
30	Power light	1	91	Hexagon socket screw M6 x 25mm	4
31	Motor	1	93	Hexagon socket screw M6 x 20mm	4
32	Tightening handle	1	94	Hexagon socket screw M5 x 20mm	2
34	Bracket tube blocked	2	95	Phillips screw+spring washer+flat washer	1
35	Electromagnetic switch	1	96	Hexagon lock nut M4	8
36	Cable clamp	1	97	Circuit board	1
38	Worktable	1	98	Wire clip	2
39	Bearing gasket	8	99	Foot switch	1
40	Deep groove ball bearing	4	100	Power cord	1
41	Bearing pointer bowl	1	101	Blowpipe	1
42	Bearing pressure bowl	2	102	Wide saw blade - with pin	1
43	Lower rocker bar	1	103	T wrench	1
44	Upper rocker bar	1	105	Narrow saw blade - without pin	1
45	Tension plate	2	106	Index plate locking handle	1
46	Bearing bush	4	107	Spacer bush	1
47	Deep groove ball bearing	2	110	Phillips screw M4 x 50mm	4
48	Connecting block press plate	1	111	Phillips screw+spring washer assy	1
49	Eccentric connection block	1	112	Hexagon socket screw M4 x 10mm	3
50	Eccentric wheel	1	113	Hexagon socket screw M4 x 8mm	1
51	Small cushion cover	2	114	Spring washer	2
52	Oil bearing	4	115	Flat washer	2
53	Tension lever	1	116	Phillips screw M8 x 65mm	1
54	Locking bowl	2	117	Right-side plate	1
55	Drawn cup needle roller bearing	2	118	Compression spring	1
56	Screw	2	119	Flat washer	1
57	Saw blade clip	2	120	Phillips screw+flat washer M5 x 8mm	4
58	Gasket	2	121	Hexagon nut	5
59	Compressor lever	1	122	Spacer sleeve	2
60	Screw M4 x 8mm	2	125	Plastic gasket	2
61	Fender bracket	1	126	Spacer pad	2
62	Tension spring	1	127	Cable	1
63	Saw blade guard	1	128	wire barrier	1


## Charnwood SS18F Parts Drawing





Updated March 2024

## Documents / Resources

 <p>Charnwood Woodworking machinery and tooling at its best!</p> <p>SCROLL SAW WITH FOOT SWITCH OWNER'S MANUAL MODEL: SS18F</p> <p>CE</p>	<p><a href="#">Charnwood SS18F Scroll Saw [pdf]</a> Owner's Manual</p> <p>SS18F, SS18F Scroll Saw, Scroll Saw, Saw</p>
--	--

## References

- [Woodworking machinery and tooling supplier - Charnwood Machinery Ltd](#)
- [User Manual](#)

Charnwood, Saw, Scroll Saw, SS18F, SS18F Scroll

Charnwood Saw

—Previous Post

**CHARNWOOD Insert Stove Installation Guide**

Next Post—

**charnwood W792 Professional Dust Extractor Owner's Manual**

---

## Leave a comment

Your email address will not be published. Required fields are marked \*

Comment \*

Name

Email

Website

☐ Save my name, email, and website in this browser for the next time I comment.

**Post Comment**

Manuals+, Privacy Policy | @manuals.plus | YouTube

This website is an independent publication and is neither affiliated with nor endorsed by any of the trademark owners. The "Bluetooth®" word mark and logos are registered trademarks owned by Bluetooth SIG, Inc. The "Wi-Fi®" word mark and logos are registered trademarks owned by the Wi-Fi Alliance. Any use of these marks on this website does not imply any affiliation with or endorsement.