



## CHAPIN G5502 Foaming Sprayer with Metering Dial Instructions

[Home](#) » [CHAPIN](#) » CHAPIN G5502 Foaming Sprayer with Metering Dial Instructions 

### Contents

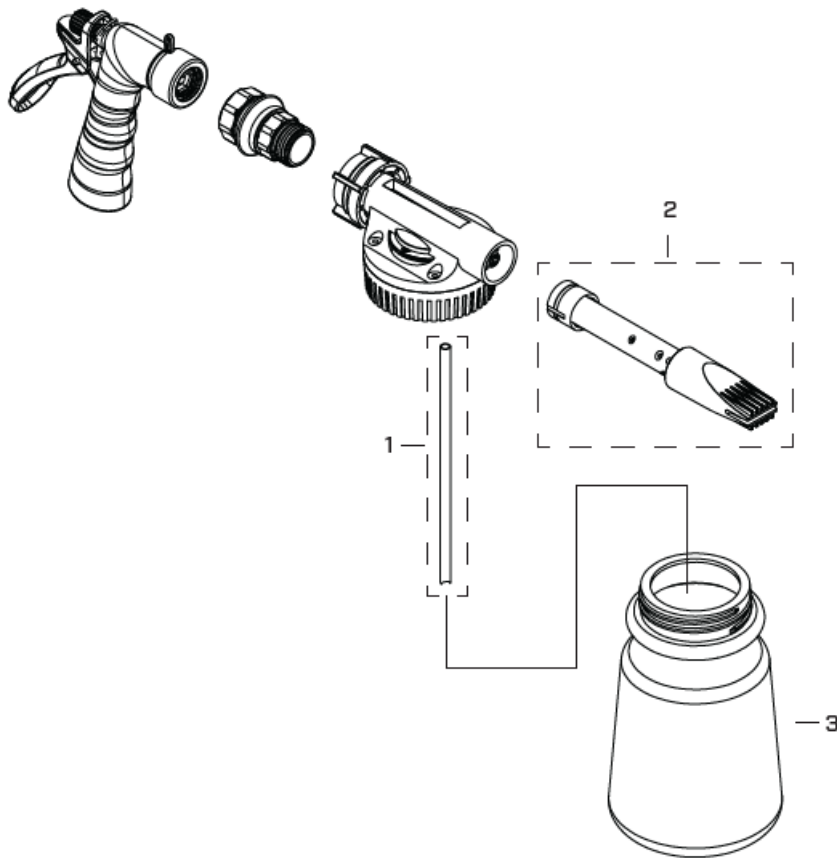
- [1 CHAPIN G5502 Foaming Sprayer with Metering Dial](#)
- [2 CLEANING YOUR SPRAYER](#)
- [3 Documents / Resources](#)
  - [3.1 References](#)
- [4 Related Posts](#)



**CHAPIN G5502 Foaming Sprayer with Metering Dial**



The following parts are available separately. For replacement parts, please call 1-800-950-4458.



**REF #: QTY PART: # DESCRIPTION**

- 1. 1 014245 Outlet Tube
- 2. 1 302622 Foaming Nozzle
- 3. 1 1609704133-5502 Poly Bottle

**WARNING**

Always wear eye protection that complies with current ANSI Standard Z87.1.

Do not spray during windy conditions or allow spray to reach people or animals.

Clean sprayer and bottle thoroughly after each use to prevent contamination between different detergents.

**ATTENTION:** When connecting to a potable water supply, follow all local codes for backflow prevention. Backflow

valve sold separately.

Before using, read and understand detergent manufacturer's instructions and warnings as well as those in the sprayer instruction pamphlet.

Do not spray water into an electrical outlet. Severe electrical shock could result in death.

**FAILURE TO HEED ALL SAFETY WARNINGS AND INSTRUCTIONS COULD RESULT IN SERIOUS BODILY INJURY OR PROPERTY DAMAGE.**

**NOTE:** The brass in this product contains lead.

**WARNING:** This product contains chemicals, including lead, known to the state of California to cause birth defects and other reproductive harm. Wash hands after handling.

## CLEANING YOUR SPRAYER


It is important that you flush out your sprayer after each use. This is to ensure trouble-free siphoning action and reduce any contamination between detergents..

1st: Remove detergent from bottle and fill with clear water.

2nd: Set the dial to number 5 and spray until bottle is empty. (Repeat if needed)

If the sprayer has not been cleaned, the next time you use it, it may not siphon properly. This means that some dried detergent has clogged one or more of the openings in the mixing head. If rinsing does not clear the openings, then a pointed object may need to be inserted to break through the dried detergent. Do this carefully in order not to damage the opening.

## Documents / Resources

	<p><a href="#">CHAPIN G5502 Foaming Sprayer with Metering Dial</a> [pdf] Instructions G5502 Foaming Sprayer with Metering Dial, G5502, Foaming Sprayer with Metering Dial, Metering Dial, Sprayer</p>
--	---

## References

- [Chapin International](#)
- [Chapin Troubleshooting & Service Videos – Chapin International](#)