



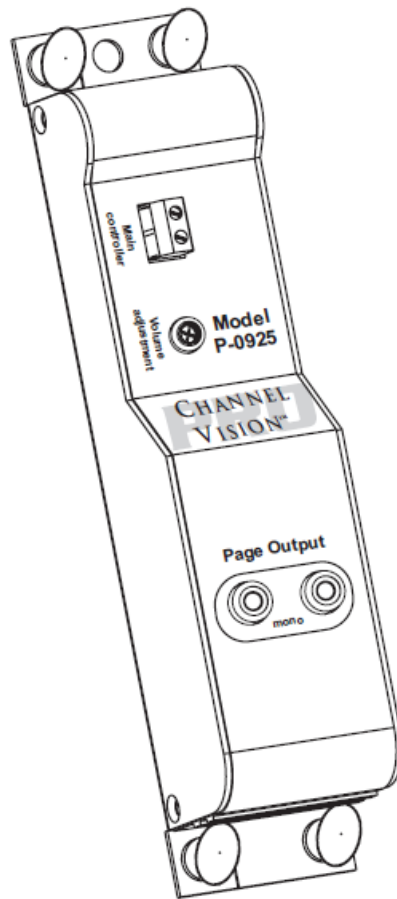
## CHANNEL VISION P-0925 Paging Module User Manual

[Home](#) » [Channel Vision](#) » CHANNEL VISION P-0925 Paging Module User Manual 

### Contents

- 1 CHANNEL VISION P-0925 Paging Module
- 2 Mounting Options
- 3 Whole House Paging with the P-1014
- 4 Operating Instructions
- 5 Paging Only
- 6 Paging & Door Intercom
- 7 Specifications:
- 8 Features:
- 9 FAQ
  - 9.1 Q: How can I obtain service during the warranty period?
  - 9.2 Q: What should I do if a problem occurs with the product after the warranty period?
- 10 Documents / Resources
  - 10.1 References
- 11 Related Posts

**CHANNEL VISION P-0925 Paging Module**



## USER MANUAL

P-0925  
Paging Module



CHANNEL VISION™

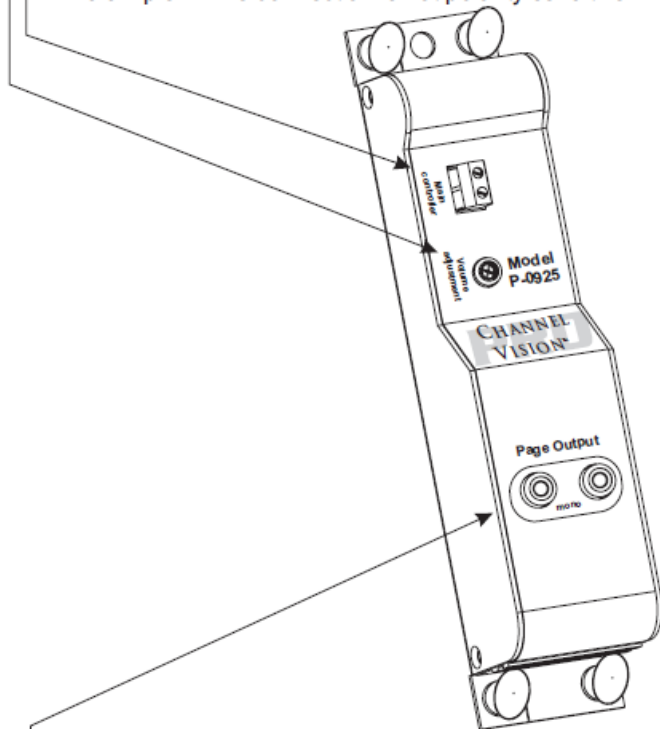
234 Fischer Avenue Costa Mesa, CA 92626  
(714) 424-6500 (800) 840-0288 (714) 424-6510 fax  
[www.channelvision.com](http://www.channelvision.com) email: [sales @ channelvision.com](mailto:sales@channelvision.com)

The **P-0925** allows Channel Vision's C-0920 or TE110 to provide an audio output that may be connected to the paging input of a whole house amplifier. The new Channel Vision's **PRO** form factor allows the P-0925 to be mounted in a structured wiring enclosure, a 19" rack\*, or screwed to any flat surface.

- Enables paging from a C-0920 or TE110
- Simple connections
- Quick and easy installation

Volume level adjustment allows the paging signal to be increased or decreased to match the input requirements of the paging amplifier.

Screw terminals allow easy connection to the C-0920 or TE110. This simple 2-wire connection is not polarity sensitive.



Paging output sends audio to the paging input of whole-house audio amplifier.

**Note:** be sure to use an amplifier that has an audio-sensing page input.

**Such as the P-1014.**

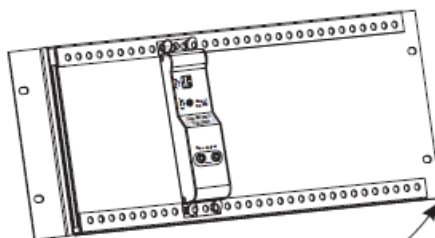
Product Dimensions: 1.5"W x 6.5"H x 1.25"D

## Mounting Options



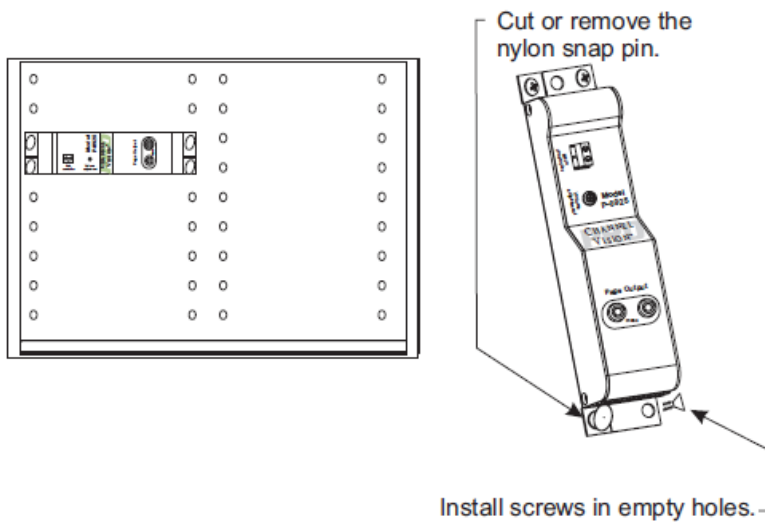
The **NEW P-1300** from Channel Vision's Pro-series product line is the perfect home for the P-0925. The P-1300 is a hinged plate designed to fit into a standard 19" rack.

The **P-1300** hinges open to maintain a clean look and provide easy access for servicing equipment.



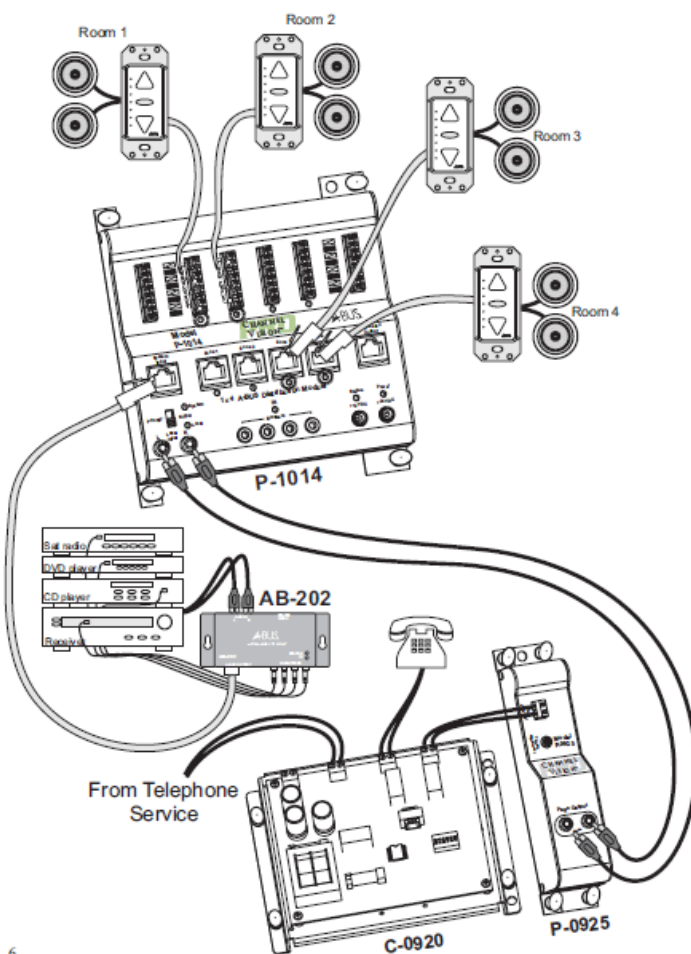
The P-1014 can also be mounted in a standard structured wiring enclosure or screwed to a wall or flat surface as

shown below.



## Whole House Paging with the P-1014

Channel Vision's P-1014 A-BUS distribution module provides an integrated audio sensing local input that can be used as a paging input. Simply make the connections shown below and place the signal priority switch in the local position.



## Operating Instructions

### To make a page:

1. Pick up the telephone.

2. Press the activation key 3 times.

**Note:** the activation key may be either \* or #.

This setting is determined by the TE110 or C-0920.

3. Make your announcement.

4. Hang up the telephone.

**Example: (assume # is the activation key)**

1. Pick up the telephone



2. Press pound 3 times



**Note:** the 3rd press may produce an audible tone in the speakers, this is normal.

3. Make the announcement

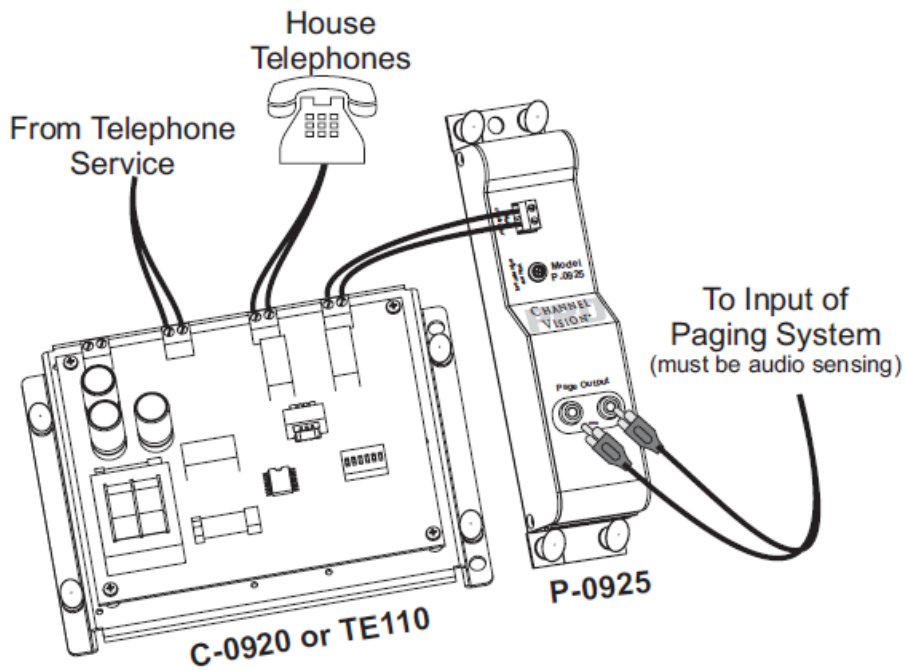


4. Hang up the telephone



## Paging Only

Make all connections before applying power.



Follow this connection diagram if you only want to have whole-house paging without a front door intercom.

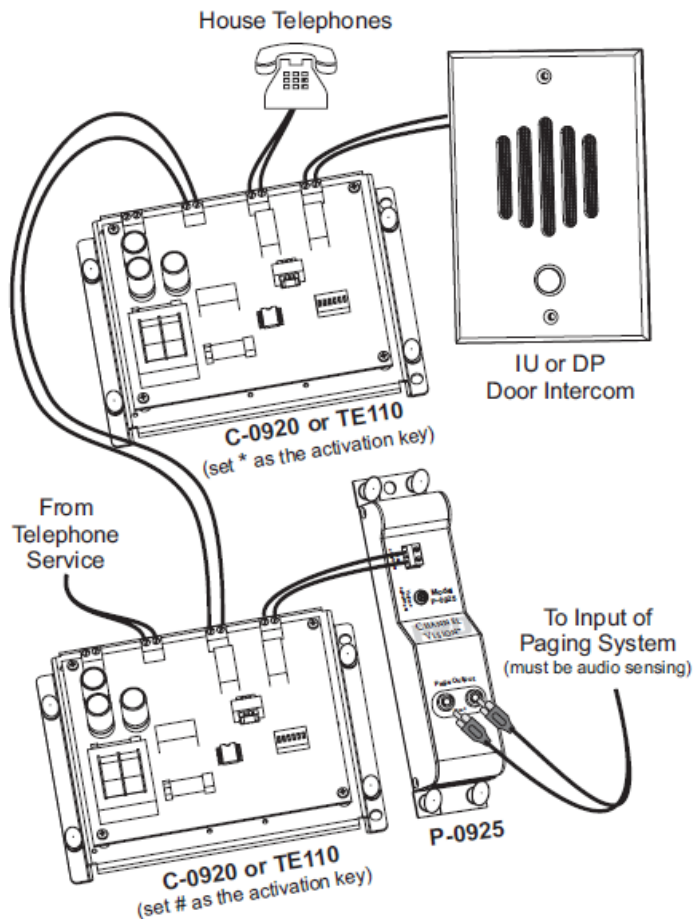
#### **Additional Notes:**

The P-0925 connects to the C-0920 or TE110 the same way one of Channel Vision's DP or IU door stations would. Thus, if a P-0925 is connected to the C-0920, then the a door station cannot be connected.

For systems that require both paging and front door intercom, follow the diagram on the next page.

### **Paging & Door Intercom**

Make all connections before applying power



When paging and door intercom are required, two C-0920 or TE110 units must be used and they must be configured to respond to different activation keys. Refer to C-0920 or TE110 manual for help setting the activation key.

### Specifications:

- Model: P-0925
- Brand: CHANNEL VISION
- Page Output: Mono
- Dimensions: 1.5W x 6.5H x 1.25D

### Features:

- Enables paging from a C-0920 or TE110
- Simple connections
- Quick and easy installation
- Volume level adjustment
- Screw terminals for easy connection

### FAQ

**Q: How can I obtain service during the warranty period?**


**A:** To obtain service during the warranty period, please call (800) 840-0288 toll-free and obtain a Return Authorization number in advance. The number should be marked on the outside of the shipping carton.

**Q: What should I do if a problem occurs with the product after the warranty period?**

**A:** If a problem occurs with the product after the warranty period, please contact Channel Vision Technology, your dealer, or any factory-authorized service center for assistance.

---

## Documents / Resources

	<a href="#">CHANNEL VISION P-0925 Paging Module</a> [pdf] User Manual P-0925 Paging Module, P-0925, Paging Module, Module
---	--

## References

-  [Manual-Hub.com - Free PDF manuals!](#)
- [User Manual](#)

[Manuals+.](#) [Privacy Policy](#)

This website is an independent publication and is neither affiliated with nor endorsed by any of the trademark owners. The "Bluetooth®" word mark and logos are registered trademarks owned by Bluetooth SIG, Inc. The "Wi-Fi®" word mark and logos are registered trademarks owned by the Wi-Fi Alliance. Any use of these marks on this website does not imply any affiliation with or endorsement.