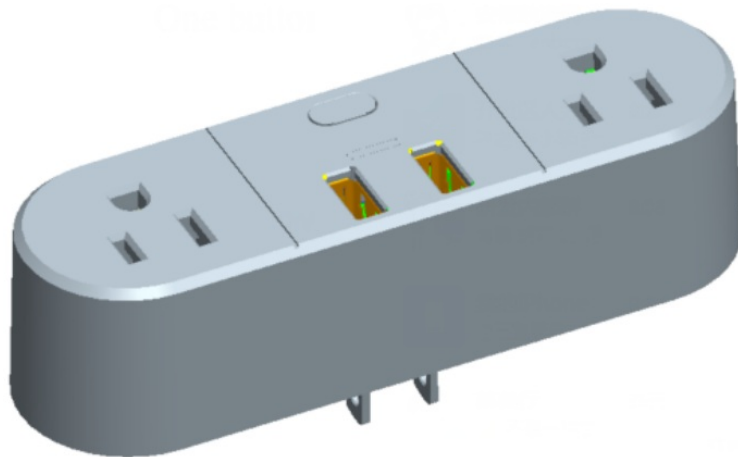


Changxing Potek Electronics Technology SK521-WU 2-Outlet WiFi Smart Socket User Manual

[Home](#) » [Changxing Potek Electronics Technology](#) » Changxing Potek Electronics Technology SK521-WU 2-Outlet WiFi Smart Socket User Manual 

Changxing Potek Electronics Technology SK521-WU 2-Outlet WiFi Smart Socket User Manual



Contents

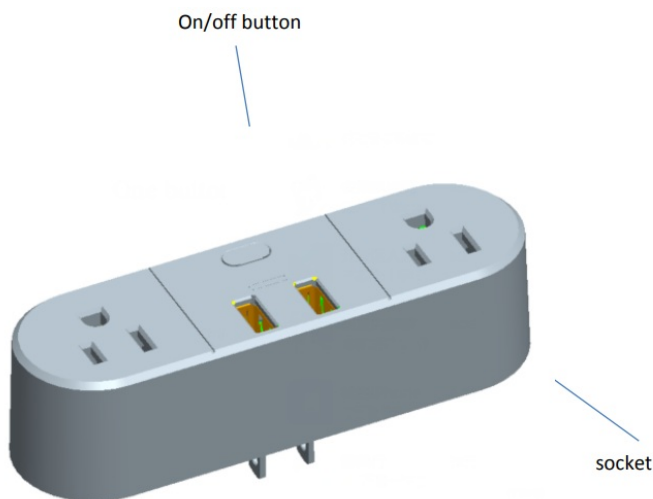
- [1 Introduction](#)
- [2 Register/Login/Retrieve password](#)
- [3 Add Device](#)
 - [3.1 Add device – Quick Connect mode](#)
 - [3.2 Add Device- Hotspot mode](#)
 - [3.3 Add Device – Connection failure](#)
- [4 Control device](#)
- [5 Profile](#)
- [6 Documents / Resources](#)
 - [6.1 References](#)
- [7 Related Posts](#)

Introduction

SK521 is a kind of socket the power of which can be controlled by the Internet with its connection to the Internet through WiFi

Where there is Internet, users can achieve the on/off control of the power and the status display of the socket through the smart phone APP. Meanwhile, customers are also able to control the R F wireless socket and the light. SK521 uses smartconfig to configure the Internet ,which is simple and convenient and can support timer function settings .The user is able to set up the socket according to his light ,and the electric cooker locally or remotely.At the same time ,the user can also set up kind of contextual models and enjoy the convenient life brought about by the Wifi smart system.

SK521 is an Internet hardware device specially designed for smart phone control of family appliances.With mobile phone software,the related appliance switchers and the light and color temperature of lights can be controlled through the phone interface. Below we introduce how to install the smart app and use the SK521

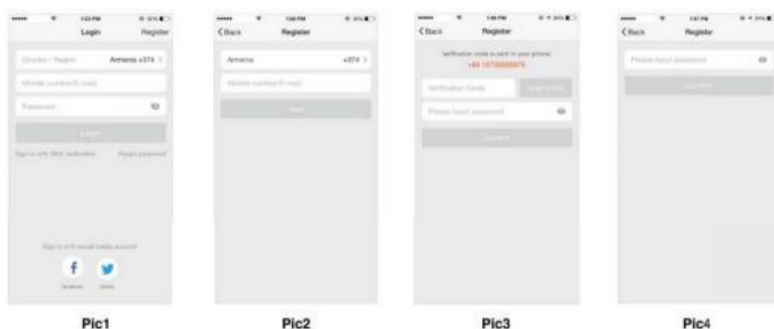


Register/Login/Retrieve password

Register

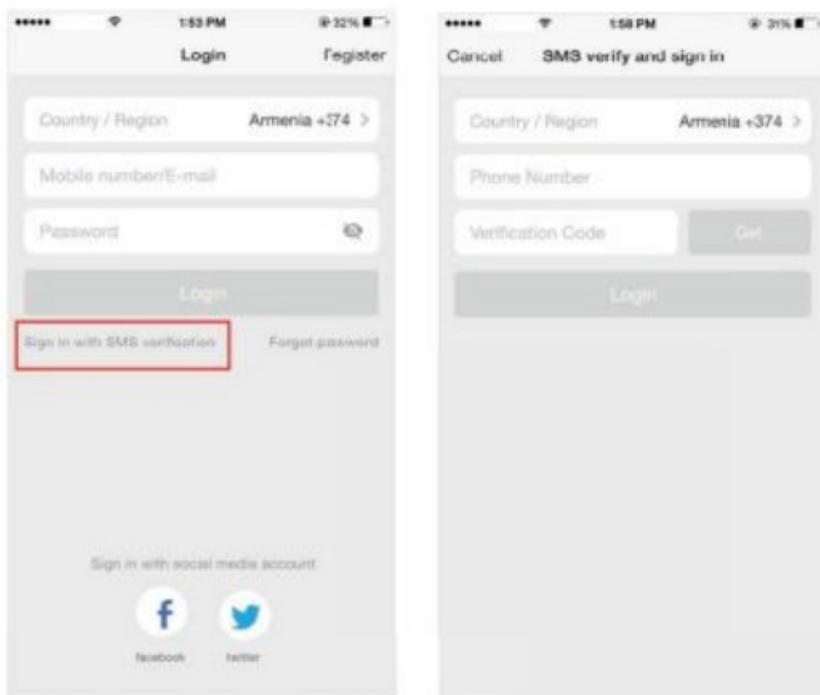
If you don't have the account of Tuya Smart APP yet, you could register an account or sign in with cellphone number + verification code.This page describes the Registration process.

1. Tap "Register" on the upper right (pic 1)
2. The system will automatically recognize your country / area. You can also select your country code by yourself. Enter the cellphone number/E-mail and tap -Next- (pic 2)
3. f you entered the mobile cellphone number, you gonna enter the verification code you received (pic 3). and then enter the password, finally. tap-Confirm" to finish your registration.
4. If you entered the E-mail address, enter the password (pic 4), then tap"Confirm" to finish your registration.



Sign in with cellphone number + verification code

1. Tap 'Sign in with SMS verification' to enter a new page
2. The system will automatically recognize your country / area. You can also select your country code by yourself.
3. Enter the cellphone number and tap "Get" to get a message.
4. Enter the verification code in the message end top "Logon" to login the app.

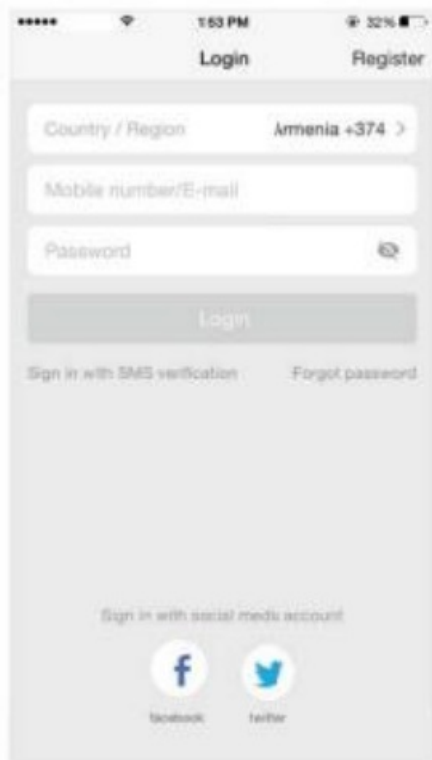


Sign In with account number + password

1. The system will automatically recognize your country / area. You can also select your country code by yourself.
2. Enter the registered cellphone number/E-mail password. then tap "login" to login the app.

Sign In with social media account

If you have installed Facebook or Twitter in your cellphone, tap the corresponding icons and then sign in the app after social network authentication.



Forgot password

If you forgot your password of your Tuya Smart APP account, you can reset the password by “Request password”

1. Tap “Forgot password”, as shown in picture 1
2. The system will automatically recognize your country / area. You can also select your country code by yourself. Enter the cellphone number/E-mail and tap “Next”, as shown in picture 2
3. Enter the verification code in the message/E-mail, as shown in picture 3, and enter the new password, tap to confirm to finish.



Pic 1



Pic 2



Pic 3

Add Device

1. Open the App, tap “+” below to add device, as shown in the picture.
2. There are two connect methods for the app (hotspot mode and quick connect mode). The quick connect mode

is the default mode. Users could tap the upper right corner to switch the connect method to hotspot mode.

3. For quick connect mode, please make sure the device Instructor light is rapidly flashing, tag "Finish network configuration" and go on to the next sleep.



For hotspot mode, please make sure the device's instructor light is slowly flashing. tap ' Finish network configuration" and go on to the next step



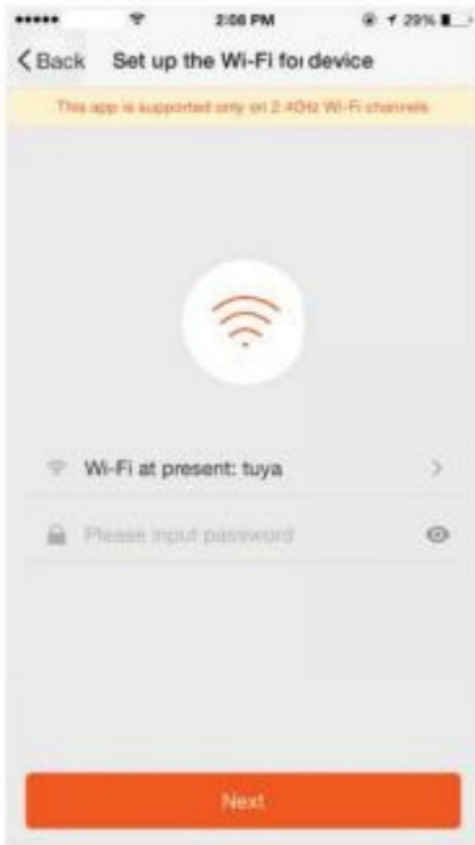
If the Tight is not flashing as the status described as above, please long press the device's reset button for 5 seconds or longer until it flashes correctly as shown in the picture below.



Please refer to the instructions to find where the reset button is

Select the WI-Fi, enter Wi-Fi password and tap “Next”, as shown in the picture below

1. For quick connect mode, please refer to NO.2 Add device Quick connect mode
2. For hotspot mode, please refer to NO.2 Add device-Hotspot +, mode

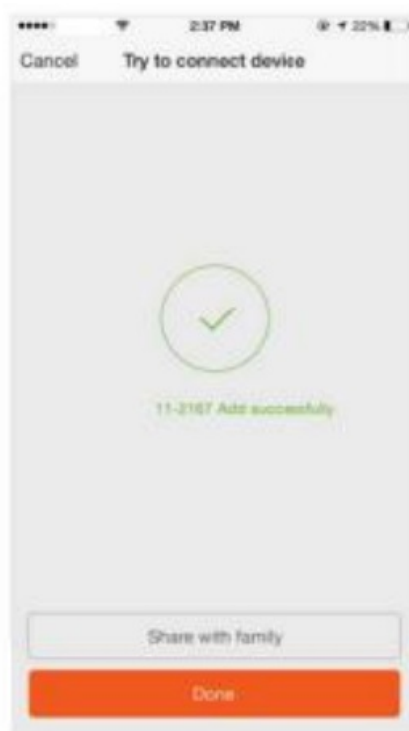


Add device – Quick Connect mode

For quick connect mode, the app interface will go through the changes during the network configuration process as shown in picture . Picture 2 shows the interface when the device is connected successfully.

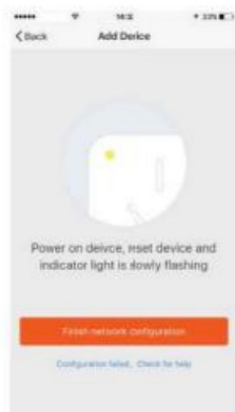


Pic 1



Pic 2

1. When the current internet status is unstable, app interface will be shown as in the picture 1
2. Long press device's reset button for 5 seconds or longer until the device's Wi-Fi instructor light slowly dashes, as shown in picture 2.
3. Make sure the Wi-Fi instructor light slowly flashes, tap "Confirm reset, switch to hotspot mode" and go on to the next step.



Pic 1



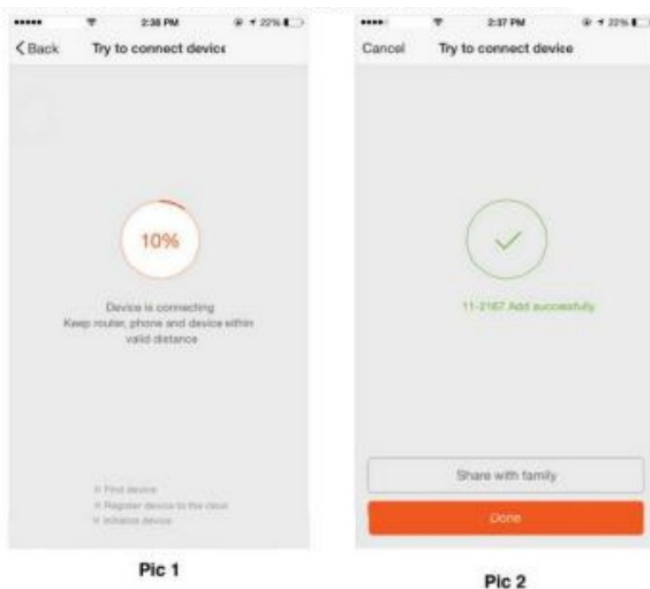
Pic 2

Add Device- Hotspot mode

1. For hotspot mode, connect to the Wi-Fi hot spot which started as "SmartLife", as shown in the picture.

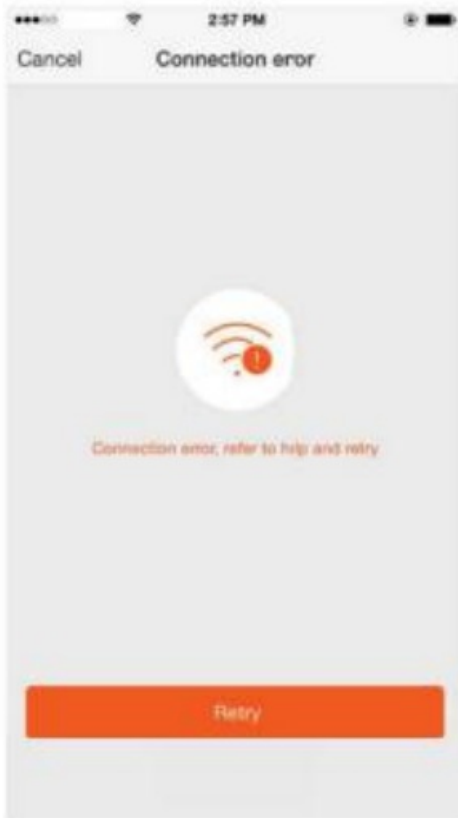


The app interface will go through the changes as shown in picture 1. Picture 2 show* the app interface when the network connection is Successful.



Add Device – Connection failure

If your app interface is shown as in the picture, it means that the network connection failed. You could try by connecting again.



Control device

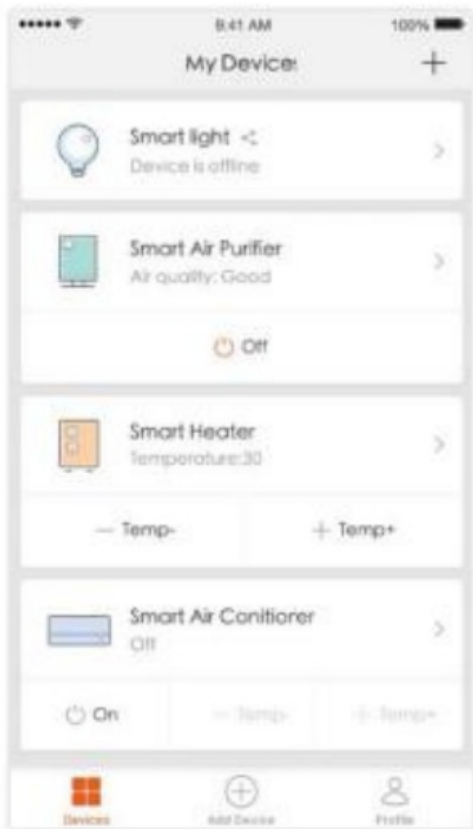
After the successful Connection, tap “Devices” at the bottom. The device’s name will Show in the list. Tap one to enter its control panel of the smart socket.

Remarks!

When the device is online, operation via ” ‘ shortcuts is supported;

When the device is offline, device displays ”device is offline”;

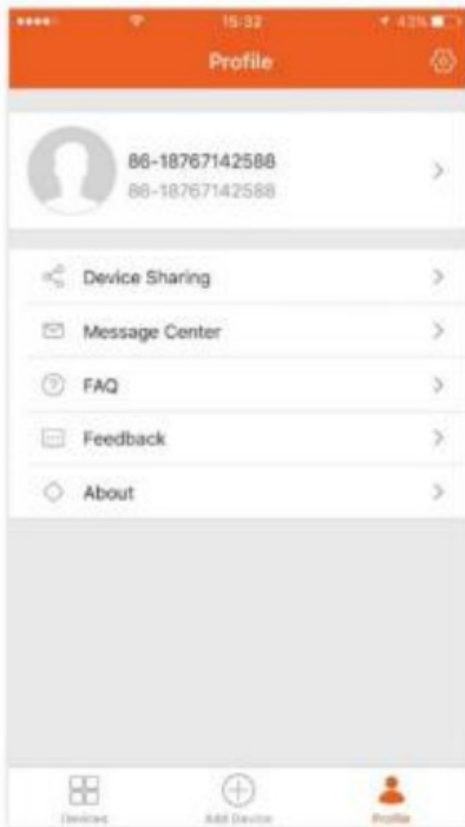
If there’s device shared by others, a specific icon will be displayed after the device’s name.



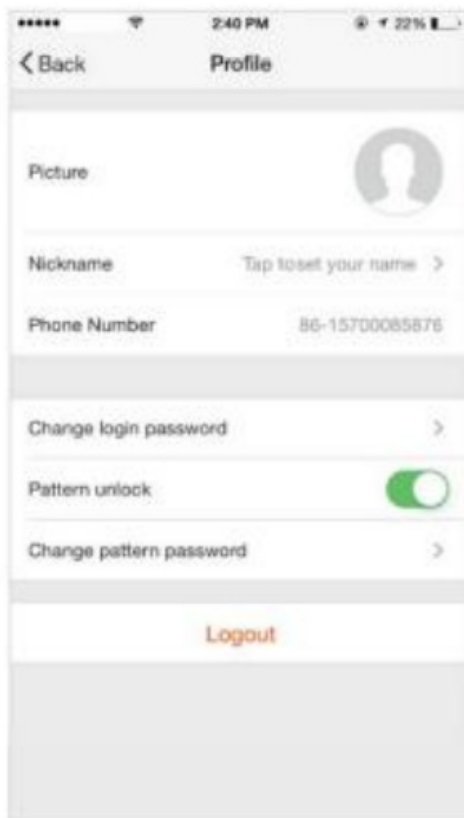
Profile

“Profile” is where users manage their personal information. The key information is as follows!

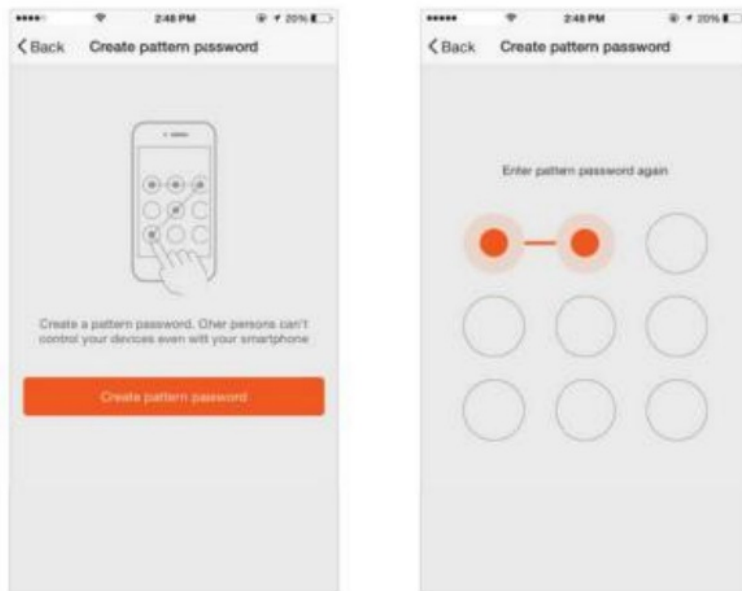
1. Personal information
2. Device Sharing – information of shared devices
3. Message center
4. F.A.Q
5. Entry to submit feedback
6. About



“Profile” page displays personal account information. You can change login password, bound cellphone number, set pattern password on this page.



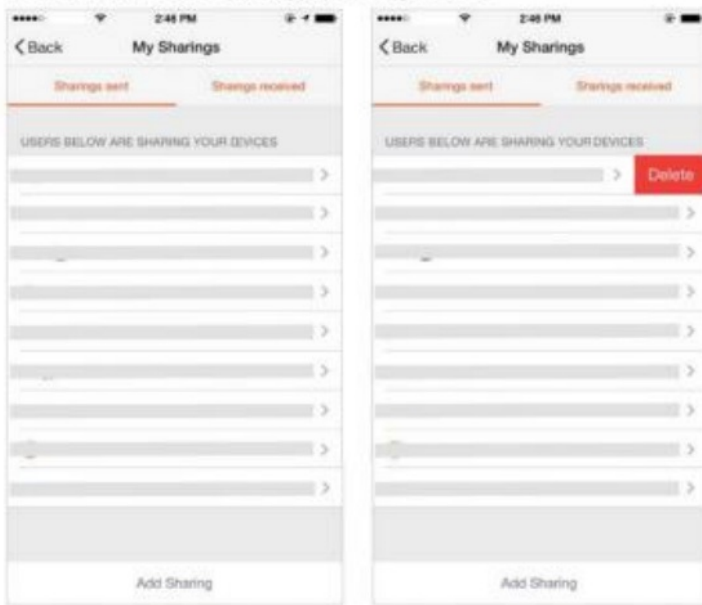
Tap “Pattern unlock” to set your pattern password. After setup, you have To enter your pattern password before using Tuya Smart APP.



Add sharing: As shown in the picture, users could share the device with a new member by simply type in his/her account. The new member could control the device with his/her own account.



Sharing sent: The list shows all members added by your account. You can delete the member and cancel the sharing by sliding to Left. **sharing received:** The list shows all devices that your account has received You can delete the sharing by sliding to left.



Message center: Including notifications of new device and new sharing



Feedback: Entry where users could submit their feedback



“About “. Including information about the app:

1. Tap “rate us”, app will jump to a corresponding application market where you could rate us.
2. Show app version number.



Documents / Resources

	<p>Changxing Potek Electronics Technology SK521-WU 2-Outlet WiFi Smart Socket [pdf] User Manual</p> <p>SK521-WU, SK521WU, 2AMV5-SK521-WU, 2AMV5SK521WU, SK521-WU 2-Outlet WiFi Smart Socket, SK521-WU, 2-Outlet WiFi Smart Socket</p>
---	---

References

- remotely.at