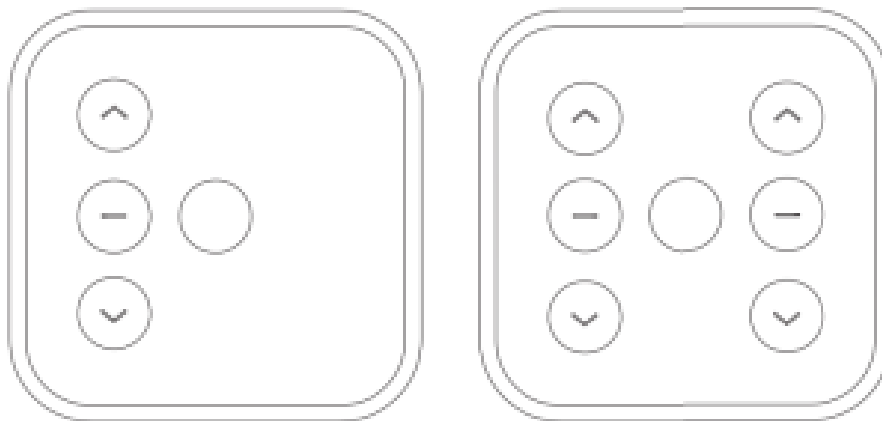


CHAMBERLAIN RTXW2 2 Channel Transmitter Instructions

[Home](#) » [CHAMBERLAIN](#) » CHAMBERLAIN RTXW2 2 Channel Transmitter Instructions 

CHAMBERLAIN RTXW2 2 Channel Transmitter



Contents

- 1 IMPORTANT SAFETY RULES**
 - 1.1 IMPORTANT SAFETY INSTRUCTIONS FOR THE USER**
 - 1.2 CORRECT USE**
- 2 PROGRAMMING REMOTE CONTROL**
- 3 TECHNICAL DATA**
- 4 DISPOSAL**
- 5 EU DECLARATION OF CONFORMITY**
- 6 Documents / Resources**
 - 6.1 References**
- 7 Related Posts**

IMPORTANT SAFETY RULES

SAVE THESE INSTRUCTIONS

IMPORTANT SAFETY INSTRUCTIONS FOR THE USER

**Caution! Non-compliance can result in serious injury.
Do not allow children to play with the controls.**

Any work on the electrical installation including servicing may only be performed by a qualified electrician.
Check shutter or sun-blind system regularly for signs of wear and damage. Damaged systems should not be used under any circumstances until such time as they have been repaired.
Observe shutter or sun-blind system carefully whilst in operation..
Only those spare parts, tools and other equipment as have been approved by Chamberlain may be used.
Fit control facilities within sight of the product to be controlled at a height of at least 1.5 m.

CORRECT USE

The remote controls in this product are only suitable for use in conjunction with shutter drives made by Chamberlain (ER-Series). Should your existing remote control have a different design, it is not compatible with these devices! To ensure that these remote controls function properly, a radiocontrolled shutter drive (ER-Series) made by Chamberlain or a universal receiver (Models: RRX1) is required.

Any other form of usage is deemed to be incorrect. Neither the manufacturer nor the supplier assumes any liability for personal injury, damage to property or consequential injury or damage occurring as a result of the use of the control units and / or drives for purposes other than those mentioned above or due to changes made to the equipment affecting the safety of the given system.

The details stipulated in the Operating Instructions in respect of the operation and repair of the system require strict observance. Neither the manufacturer nor the supplier assumes any liability for personal injury, damage to property or consequential injury or damage occurring as a result of non-compliant actions.

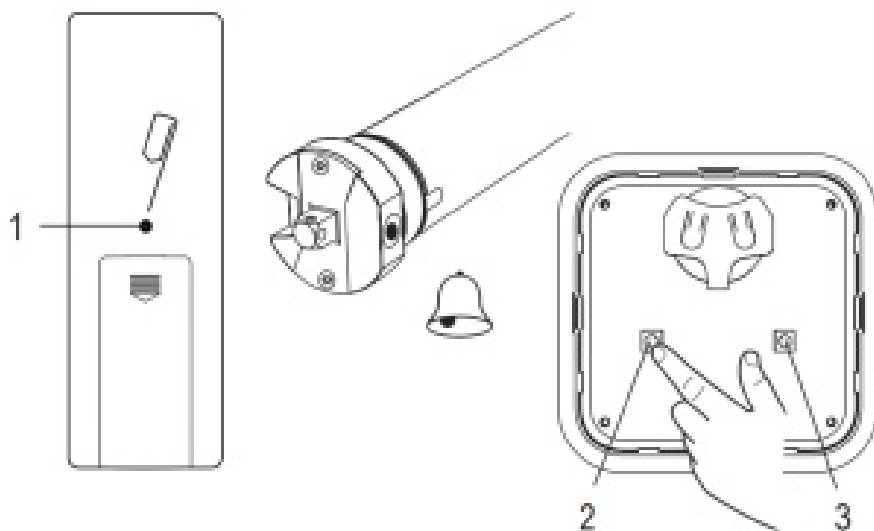
PROGRAMMING REMOTE CONTROL

The remote control is compatible with:

Chamberlain tubular motor: RPD10ER, RPD15ER, RPD25ER, RPD40ER **Chamberlain receiver:** RRX1

Press the learn button on the master remote control (1) or on an already learned remote control 8 times (motor beep) and then press the learn button on the new remote control (2) RTXW1 or (3) RTXW2. The new remote control has been successfully taught. The motor confirms this with a short jerk in each direction.

For programming a master remote control / on receiver model RRX1 see corresponding instructions!



TECHNICAL DATA

Battery type / QTY	CR2430 / 1
Power supply	3V DC
max. remote power	≤ 10mW
Frequency	433,92 MHz
System	Rolling code
Degree of protection	IP30
Temperature	-10°C – +50°C

DISPOSAL



The packaging must be disposed of in the local recyclable containers. According to the European Directive 2002/96/EC on waste electrical equipment, this device must be properly disposed of, after usage in order to ensure a recycling of the materials used. Old accumulators and batteries may not be disposed of in the household waste, since they contain pollutants and must be properly disposed of in municipal collection points or in the containers of the dealer provided. Country-specific regulations must be observed.

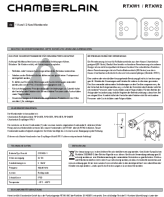
EU DECLARATION OF CONFORMITY

Hereby, Chamberlain GmbH declares that the radio equipment type RTXW1/W2 is in compliance with Directive 2014/53/EU. The full text of the EU declaration of conformity is available at the following internet address:

<https://chamberlain.de/Chamberlain/media/Chamberlain/CE/114ADoC-RTX-D-2020.pdf>



Documents / Resources

	<p>CHAMBERLAIN RTXW2 2 Channel Transmitter [pdf] Instructions RTXW1, RTXW2, 1 channel transmitter, 2 channel transmitter, RTXW2 2 Channel Transmitter</p>
---	---

References

- [Chamberlain - Smarte Garagentorantriebe, Rollladenantriebe und Hoftorantriebe.](#)