



CHAMBERLAIN 953EV 3 Button Door Opener Remote Control Transmitter User Manual

[Home](#) » [CHAMBERLAIN](#) » CHAMBERLAIN 953EV 3 Button Door Opener Remote Control Transmitter User Manual 

Contents

- [1 CHAMBERLAIN 953EV 3 Button Door Opener Remote Control Transmitter](#)
- [2 Product Information](#)
- [3 Product Usage Instructions](#)
- [4 Installing the Visor Clip](#)
- [5 Frequently Asked Questions \(FAQ\)](#)
- [6 Before you start](#)
- [7 CONNECT TO THE MYQ® APP](#)
- [8 REPLACE THE BATTERY](#)
- [9 FCC STATEMENT](#)
- [10 WARRANTY](#)
- [11 Documents / Resources](#)
 - [11.1 References](#)

CHAMBERLAIN

CHAMBERLAIN 953EV 3 Button Door Opener Remote Control Transmitter



Product Information

Specifications

- **Model:** 953EV, 953EV-P2, 935EVC, 953EVC-P2, 956EV, 956EV-P2, 956EVC, and 956EVC-P2
- **Compatibility:** For use with Chamberlain 315 MHz or 390 MHz garage door openers manufactured after January 1, 1993
- **Programmable:** Can be programmed to operate up to three compatible devices

Product Usage Instructions

Before you start

- Make sure the garage door opener has a working light because it is a programming indicator.

Programming the Remote Control (953EV, 953EV-P2, 953EVC, and 953EVC-P2)

1. Press and hold the program button on the remote control until the LED on the front of the remote control turns on.
2. Press and release the remote control button you wish to use the number of times that corresponds with the garage door opener type:

# of Presses	Garage Door Opener Type
1	...
2	...
3	...
4	...

1. To exit programming mode, press any remote control button except the button that was just programmed.

Programming the Remote Control (956EV, 956EV-P2, 956EVC, and 956EVC-P2)

1. Press and hold the program button on the remote control until the LED on the front of the remote control turns on.
2. Press and release the remote control button you wish to use the number of times that corresponds with the garage door opener type:

# of Presses	Garage Door Opener Type
1	...
2	...
3	...
4	...

1. Press and release the Learn button on the garage door opener.
2. Press the remote control button programmed in step 2 until the garage door opener lights flash or two clicks are heard.
3. To test, press the programmed button on the remote control.

Installing the Visor Clip

- **Install the visor clip.**

Frequently Asked Questions (FAQ)

- **Q:** Can this remote control be programmed to operate gate operators?
- **A:** Yes, the remote control can be programmed to operate up to three compatible devices, such as garage door openers and gate operators.
- **Q:** Is this remote control compatible with all garage door openers?
- **A:** No, this remote control is only compatible with Chamberlain 315 MHz or 390 MHz garage door openers manufactured after January 1, 1993.
- **Q:** How do I exit programming mode?
- **A:** To exit programming mode, press any remote control button except the button that was just programmed.

For use with Chamberlain 315 MHz or 390 MHz garage door openers manufactured after January 1, 1993. The remote control can be programmed to operate up to three compatible devices, such as garage door openers and gate operators.

Before you start

Make sure the garage door opener has a working light because it is a programming indicator.

WARNING: This product can expose you to chemicals including lead, which are known to the State of California to cause cancer or birth defects or other reproductive harm. For more information go to www.P65Warnings.ca.gov.

GARAGE ACCESS SYSTEM REMOTE MODELS 953EV, 953EV-P2, 953EVC AND 953EVC-P2

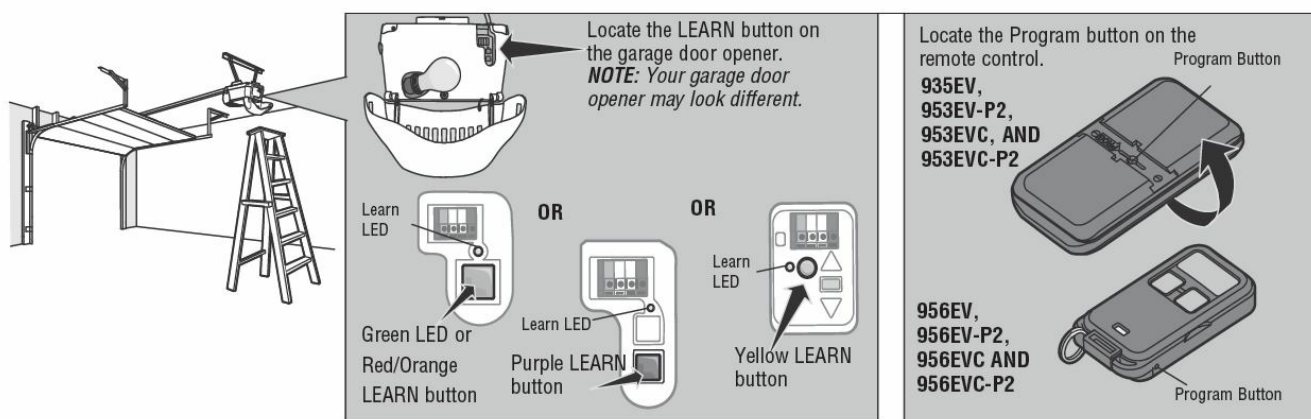


PREPARE

warning

To prevent possible **SERIOUS INJURY** or **DEATH** from a moving gate or garage door:

- ALWAYS keep remote controls out of reach of children. NEVER permit children to operate or play with remote controls.
- Activate the gate or door **ONLY** when it can be seen clearly, is properly adjusted and there are no obstructions to door travel.
- ALWAYS keep the gate or garage door in sight until completely closed. NEVER permit anyone to cross path of a moving gate or door.



CONNECT TO THE MYQ® APP

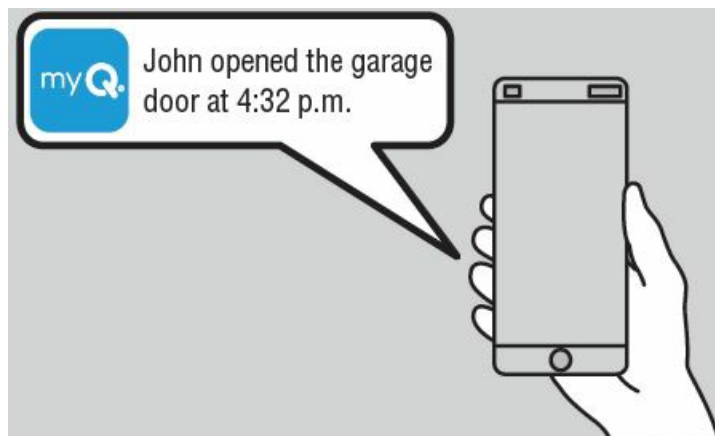
1. Look for a Wi-Fi or a Powered by myQ® logo to determine if your garage door opener is myQ® compatible. If not, proceed to programming.



2. To start monitoring the garage door movements, scan the QR code to download the myQ® app.

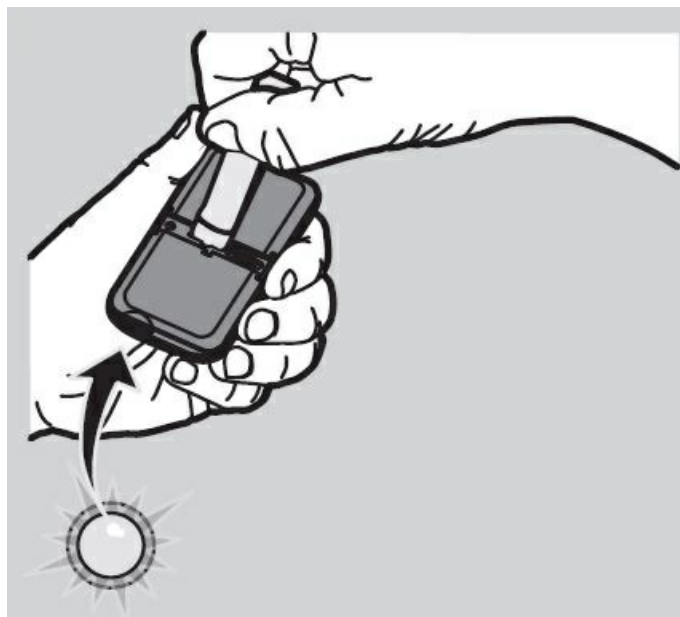


3. To add your remote and name, follow the in-app instructions in order.
4. After completing the setup in the app, you can control the garage door opener and receive notices every time your garage door opens and closes.



PROGRAM THE REMOTE CONTROL (953EV, 953EV-P2, 953EVC AND 953EVC-P2)

1. Press and hold the program button on the remote control until the LED on the front of the remote control turns on.

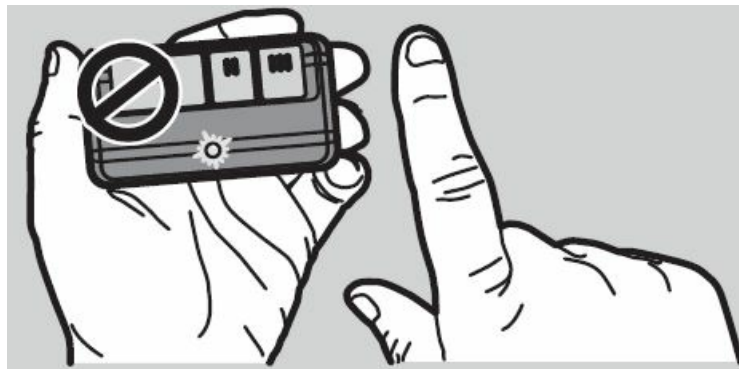


2. Press and release the remote control button you wish to use the number of times that corresponds with the garage door opener type:

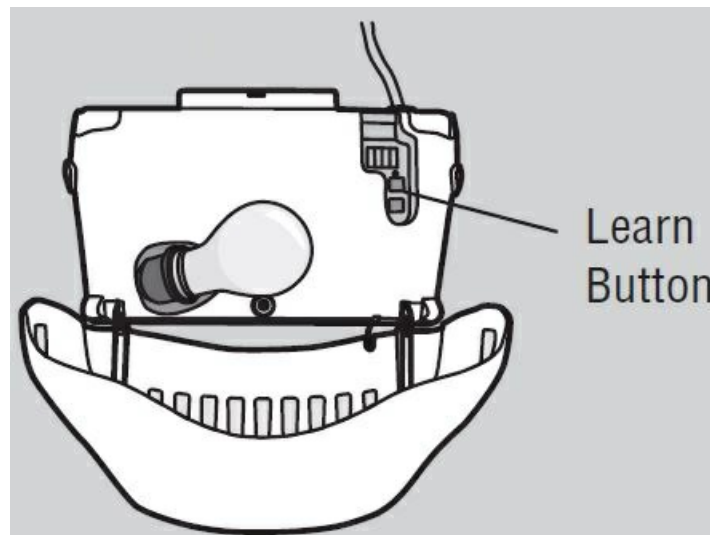
# of Presses	Garage Door Opener Type
1	Yellow Learn Button (Security+ 2.0®)
2	Purple Learn Button (315 MHz Security+®)
3	Red/Orange Learn Button (390 MHz Security+®)
4	Green Learn Button (390 MHz Billion Code)



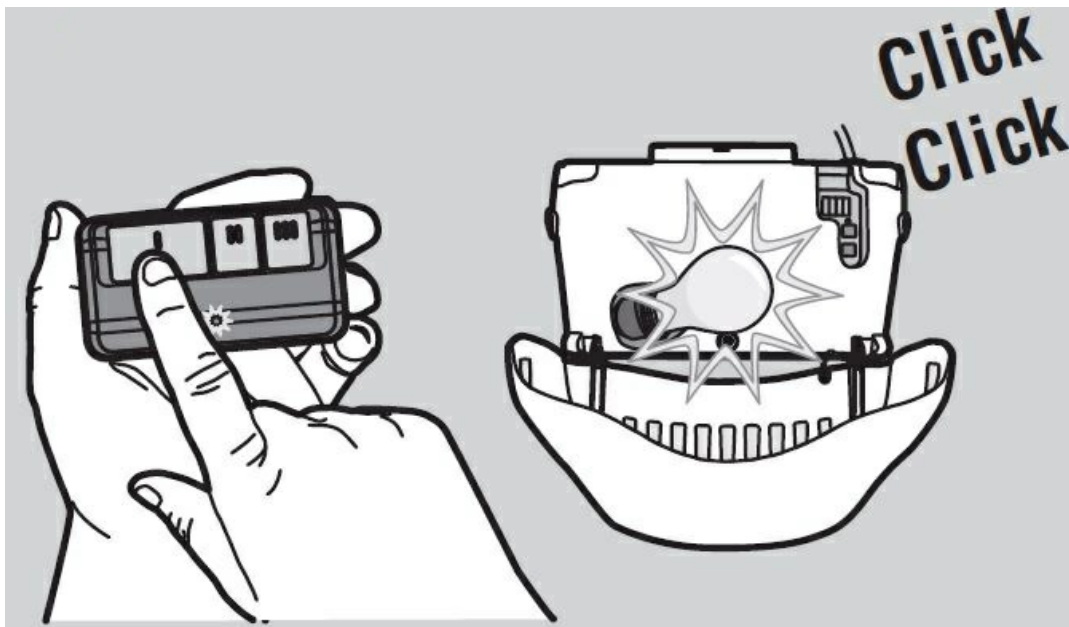
3. To exit programming mode, press any remote control button except the button that was just programmed.



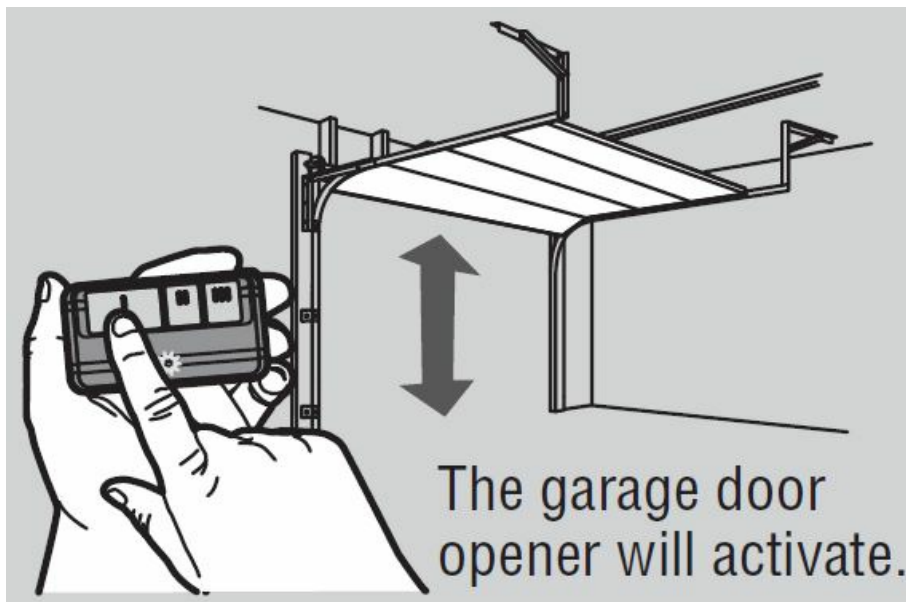
4. Press and release the Learn button on the garage door opener.



5. Press the remote control button programmed in step 2 until the garage door opener lights flash or two clicks are heard.



6. To test, press the programmed button on the remote control...



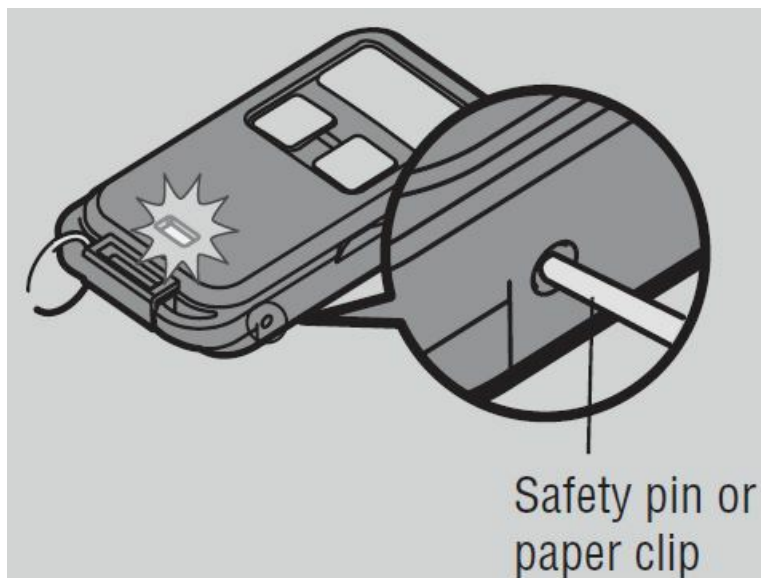
7. Install the visor clip.



PROGRAM THE REMOTE CONTROL (956EV, 956EV-P2, 956EVC AND 956EVC-P2)

1. Press and hold the program button on the remote control until the LED on the front of the remote control turns

on.

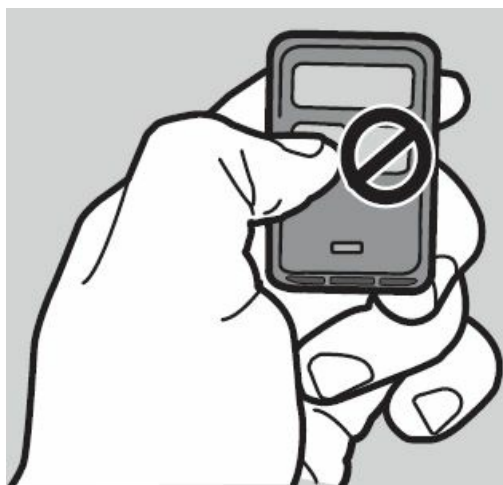


2. Press and release the remote control button you wish to use the number of times that corresponds with the garage door opener type:

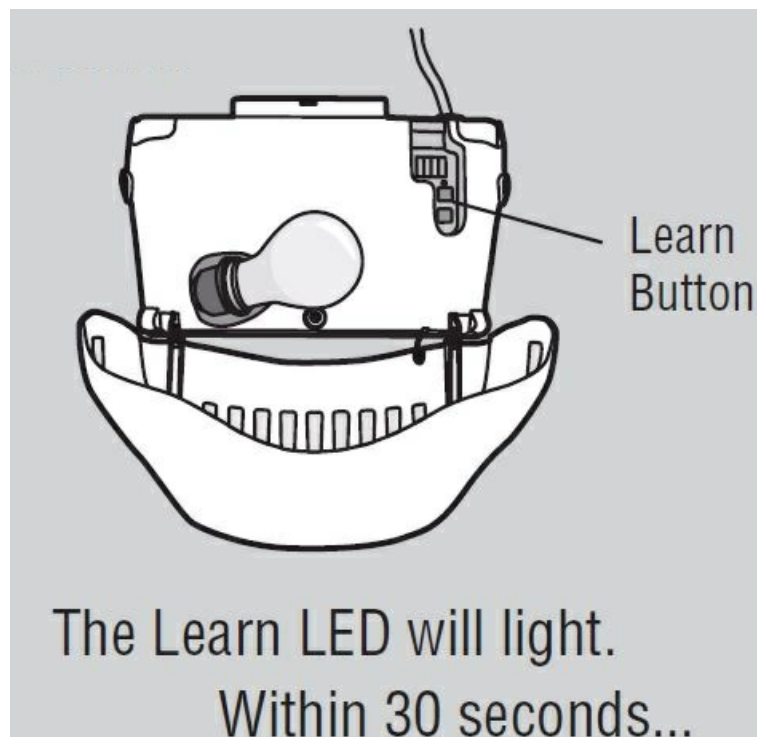
# of Presses	Garage Door Opener Type
1	Yellow Learn Button (Security+ 2.0®)
2	Purple Learn Button (315 MHz Security+®)
3	Red/Orange Learn Button (390 MHz Security+®)
4	Green Learn Button (390 MHz Billion Code)



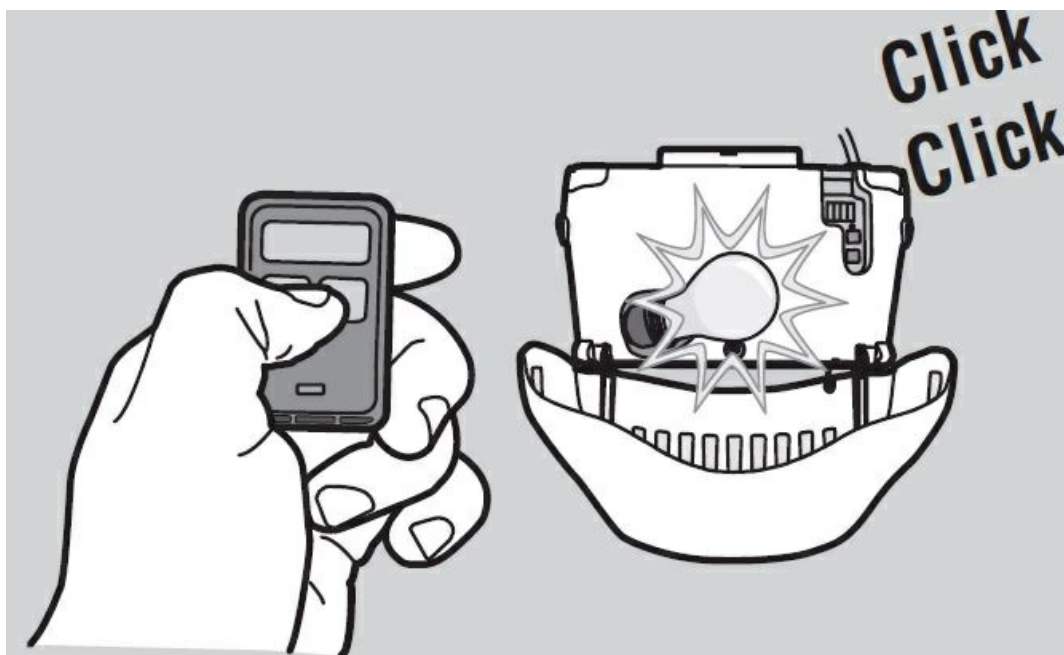
3. To exit programming mode, press any remote control button except the button that was just programmed.



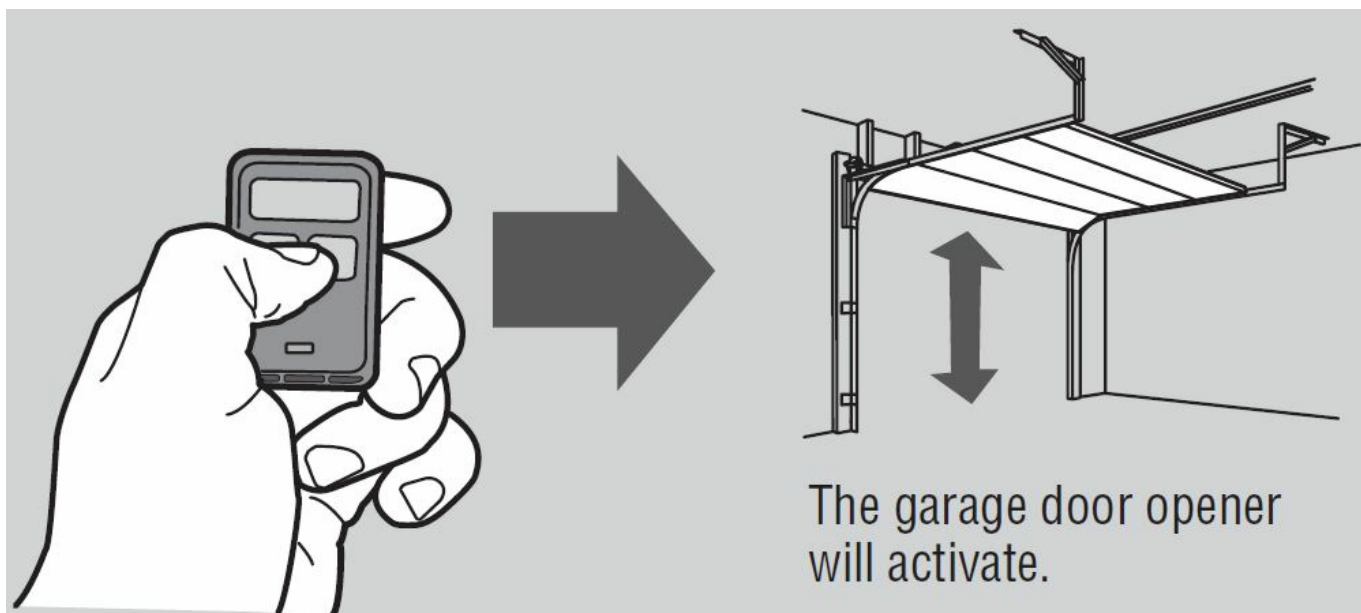
4. Press and release the Learn button on the garage door opener.



5. Press the remote control button programmed in step 2 until the garage door opener lights flash or two clicks are heard.



6. To test, press the programmed button on the remote control...



REPLACE THE BATTERY

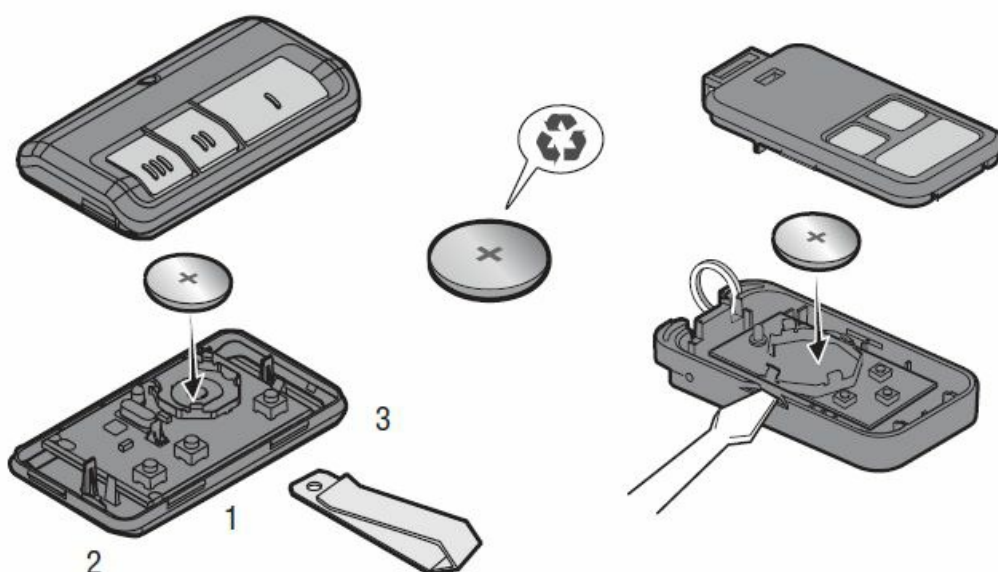
The LED on your remote will stop flashing when the battery is low and needs to be replaced. To replace the battery, open the case as shown. Insert battery positive side up (+). Replace the battery with only 3V CR2032 coin cell batteries. Dispose of the old battery properly.

953EV, 953EV-P2, 953EVC AND 953EVC-P2

- Pry open the case first in the middle (1), then at each side (2 and 3) with the visor clip.

956EV, 956EV-P2, 956EVC AND 956EVC-P2

- Pry open the case with a screwdriver blade.



warning

To prevent possible SERIOUS INJURY or DEATH:

- NEVER allow small children near batteries.
- If the battery is swallowed, immediately notify the doctor.
- To reduce the risk of fire, explosion or chemical burn:
- Replace ONLY with 3V CR2032 coin batteries.
- DO NOT recharge, disassemble, heat above 212° F (100° C) or incinerate.

FCC STATEMENT

NOTICE: To comply with FCC and or Industry Canada rules (IC), adjustments or modifications of this receiver and/or transmitter are prohibited, except for changing the code setting or replacing the battery. THERE ARE NO OTHER USER-SERVICEABLE PARTS.

This device complies with Part 15 of the FCC rules and IC RSS-210. Operation is subject to the following two conditions:

1. this device may not cause harmful interference, and
2. this device must accept any interference received, including interference that may cause undesired operation.



- Remote Control Transmitter 953EV: IFT #: RCPCH9518-0362
- Remote Control Transmitter 953EVC: IFT #: RCPCH9518-0362-A1
- Remote Control Transmitter 956EV: IFT #: RCPCH9518-0360
- Remote Control Transmitter 956EVC: IFT #: RCPCH9518-0360-A1

REPLACEMENT PARTS

- Battery. 10A20
- Visor Clip. 29B137
- (Models 953EV, 953EV-P2, 953EVC & 953EVC-P2 ONLY)

WARRANTY

ONE-YEAR LIMITED WARRANTY

The Chamberlain Group LLC warrants to the first consumer purchaser of this product that it is free from defects in materials and/or workmanship for 1 year from the date of purchase.

© 2023 The Chamberlain Group LLC All Rights Reserved. www.chamberlain.com.



[CHAMBERLAIN 953EV 3 Button Door Opener Remote Control Transmitter](#) [pdf] User Manual
953EV 3 Button Door Opener Remote Control Transmitter, 953EV, 3 Button Door Opener Remote Control Transmitter, Door Opener Remote Control Transmitter, Opener Remote Control Transmitter, Remote Control Transmitter, Control Transmitter, Transmitter

References

- [CH Chamberlain | Garage Door Openers, Remotes and Parts](#)
- [P65Warnings.ca.gov](#)
- [User Manual](#)

[Manuals+](#), [Privacy Policy](#)

This website is an independent publication and is neither affiliated with nor endorsed by any of the trademark owners. The "Bluetooth®" word mark and logos are registered trademarks owned by Bluetooth SIG, Inc. The "Wi-Fi®" word mark and logos are registered trademarks owned by the Wi-Fi Alliance. Any use of these marks on this website does not imply any affiliation with or endorsement.