



# CHAINBOX SR-ZG2819S ZigBee Dim Remote Instruction Manual

[Home](#) » [CHAINBOX](#) » CHAINBOX SR-ZG2819S ZigBee Dim Remote Instruction Manual 

## CHAINBOX

SR-ZG2819S  
ZigBee Dim Remote  
Instruction Manual  
09.ZG2819S.04841

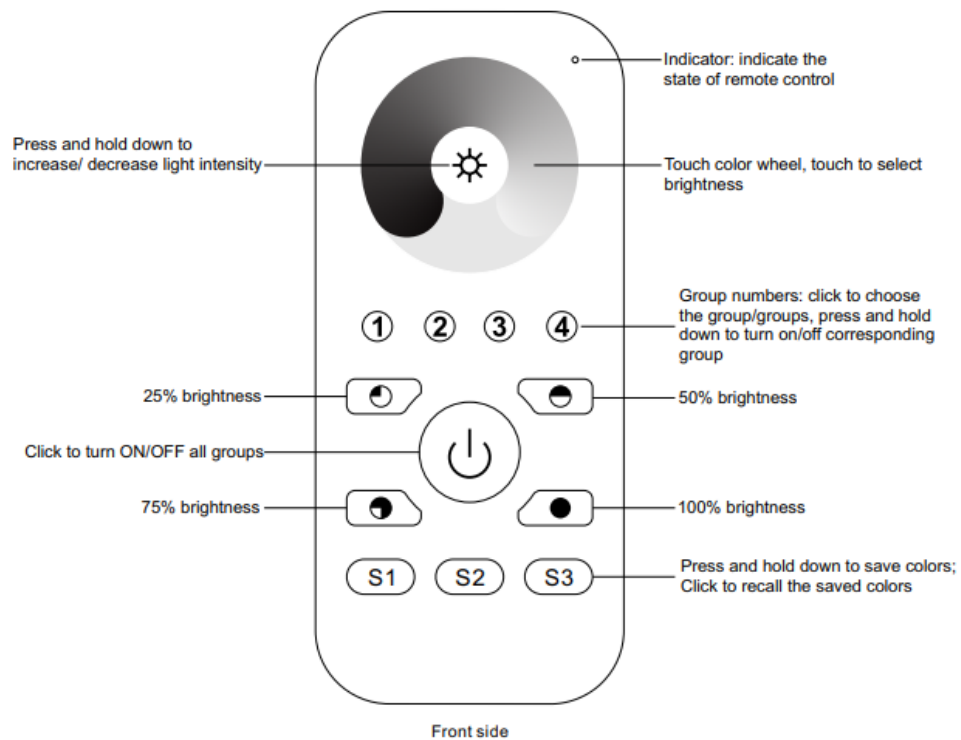


**Important:** Read All Instructions Prior to Installation.

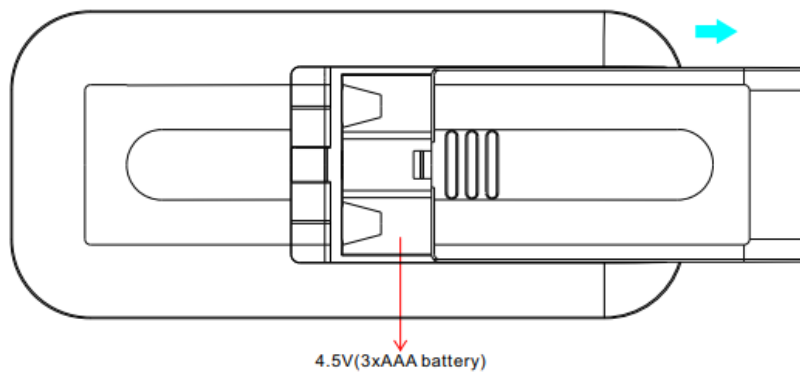
### Contents

- [1 Function introduction](#)
- [2 Product Data](#)
- [3 Safety & Warnings](#)
- [4 Operation](#)
- [5 Documents / Resources](#)
- [6 Related Posts](#)

### Function introduction

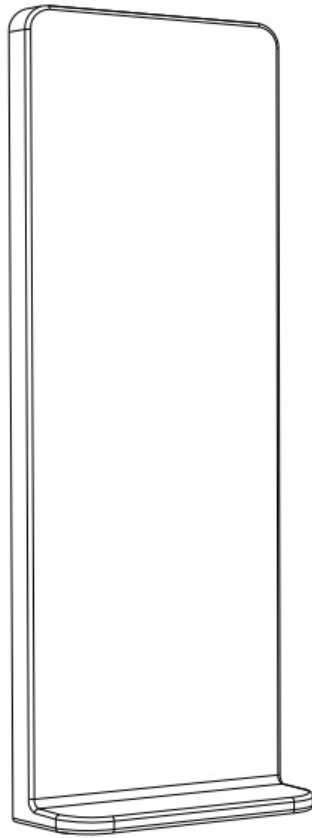


Front side



Bottom side

## Product Data



**Magnetic Bracket**

Protocol	
Operation Voltage	
Transmission Frequency	
Transmission Range (free field)	
Protection Type	
Dimming Range	
Dimension	
Protection Grade	

- ZigBee Dim remote based on ZigBee 3.0
- Enables to control single color lighting devices
- High sensitive & high stable touch color wheel, fast & precise color control
- Battery-powered remote with low power consumption
- Enables to pair ZigBee lighting devices through touchline commissioning
- Supports find and bind mode to pair with ZigBee lighting devices
- Supports 4 groups for binding max. 30 lighting devices
- 2.4 GHz global operation
- Transmission range up to 30m
- Compatible with universal ZigBee Gateway products
- Compatible with universal single-color ZigBee lighting devices

## **ZigBee Clusters Supported by This Remote Are As Follows:**

### **Input clusters:**

- Basic
- Power Configuration
- Identify
- Diagnostics

### **Output clusters:**

- Identify
- Group
- Scene
- On/off
- Level control
- Ota

## **Safety & Warnings**

- This device contains AAA batteries that shall be stored and disposed of properly.
- DO NOT expose the device to moisture.

## **Operation**

1. **This ZigBee Dim remote is a wireless transmitter that communicates with a variety of ZigBee compatible systems. This transmitter sends wireless radio signals that are used to remotely control a compatible system.**
2. **This ZigBee remote supports 4 groups for binding max. 30 lighting devices and enables to control single color ZigBee lighting devices.**
3. **Zigbee Network Pairing through Coordinator or Hub (Added to a Zigbee Network)**

**Step 1:** Remove the remote from previous zigbee network if it has already been added to it, otherwise pairing will fail. Please refer to the part "Factory Reset Manually".

**Step 4:** Immediately short press to search nearby network, indicator flashes every 1 second, 20 seconds timeout if there is no network. Indicator will then blink 5 times quickly for successful pairing.



LED indicator

**Step 2:** From your zigbee controller or hub interface, choose to add device or accessory and enter Pairing mode as instructed by the controller.

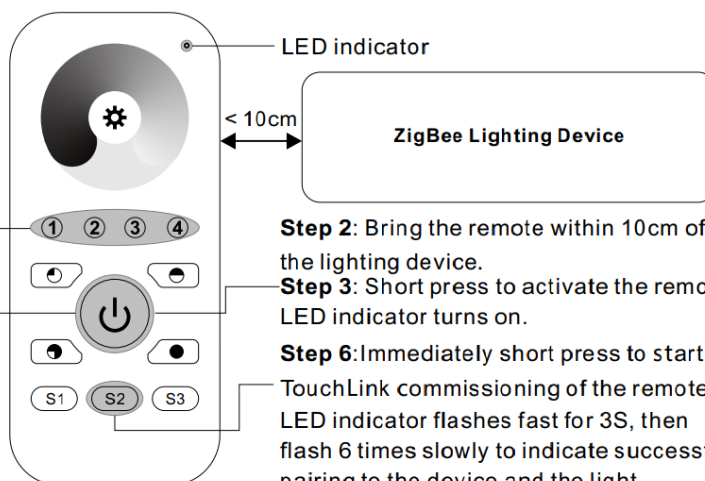
**Step 3:** Press and hold down until LED indicator turns on.

4. **TouchLink to a Zigbee Lighting Device**

**Step 1:** Set the zigbee lighting device to start TouchLink commissioning, please refer to its manual to learn how.

**Step 4:** Short press any button to choose a group to touchlink.

**Step 5:** Press and hold down until LED indicator blinks once and stay solid on.



**Step 2:** Bring the remote within 10cm of the lighting device.

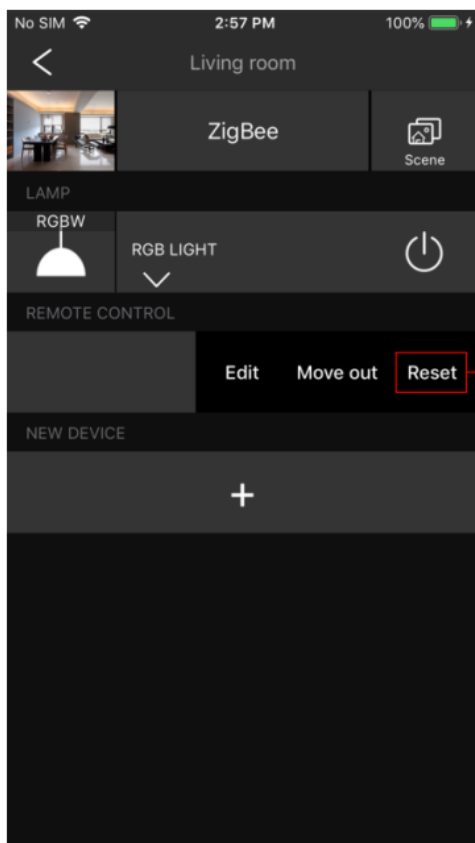
**Step 3:** Short press to activate the remote, LED indicator turns on.

**Step 6:** Immediately short press to start TouchLink commissioning of the remote. LED indicator flashes fast for 3S, then flash 6 times slowly to indicate successful pairing to the device and the light connected to the device will blink twice.

## Note

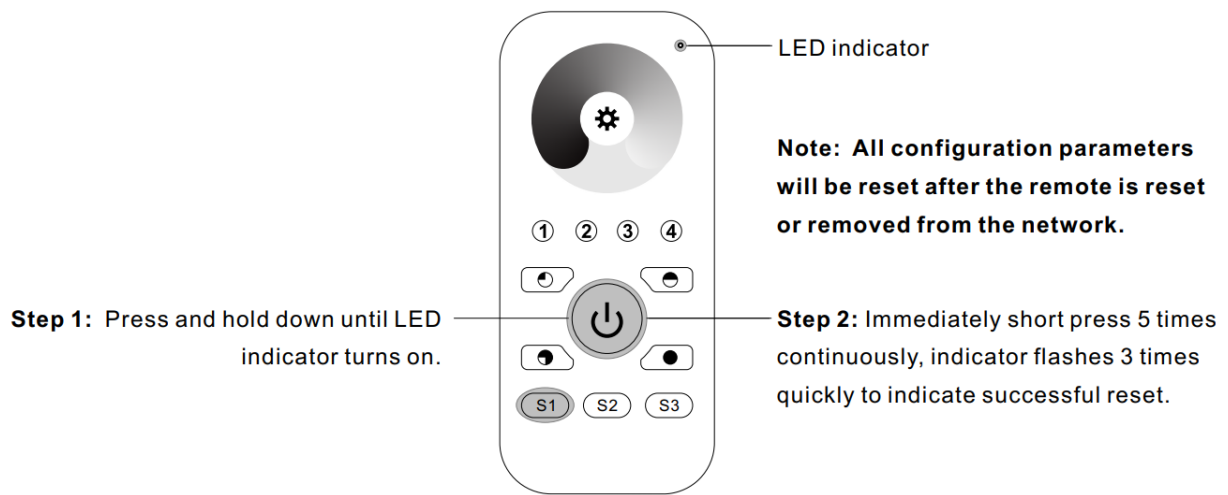
- 1) Directly TouchLink (both not added to a ZigBee network), each remote can link with 30 devices.
- 2) TouchLink after both are added to a ZigBee network, each remote can link with max. 30 devices.
- 3) For Hue Bridge & Amazon Echo Plus, add remote and device to the network first then TouchLink.
- 4) After TouchLink, the remote can control the linked lighting devices.

## 5. Removed from a Zigbee Network through Coordinator or Hub Interface

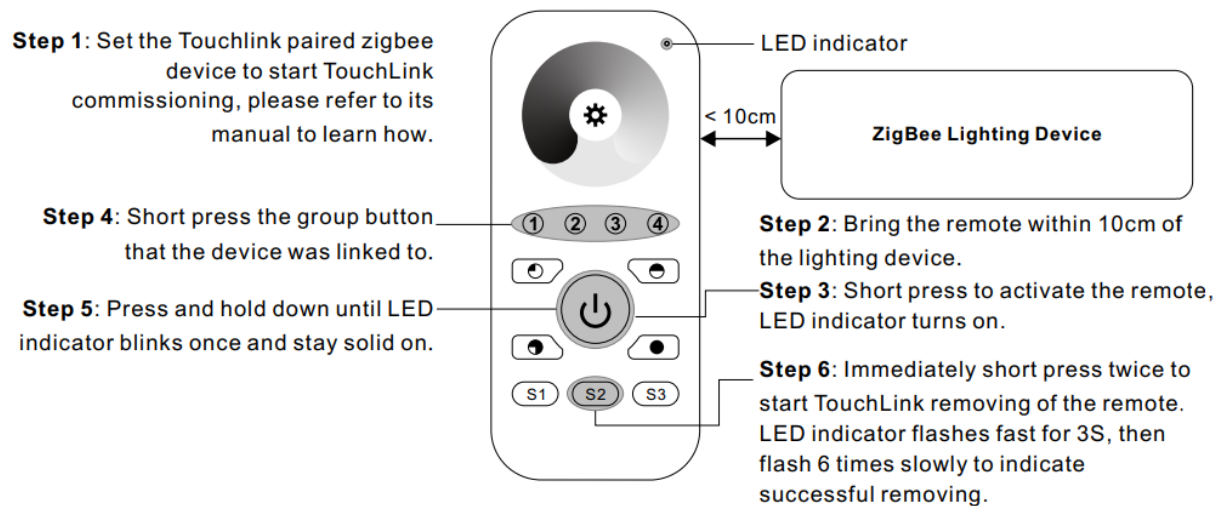


From your ZigBee controller or hub interface, choose to delete or reset the remote as instructed, indicator flashes 3 times quickly to indicate successful removing.

## 6. Factory Reset Manually

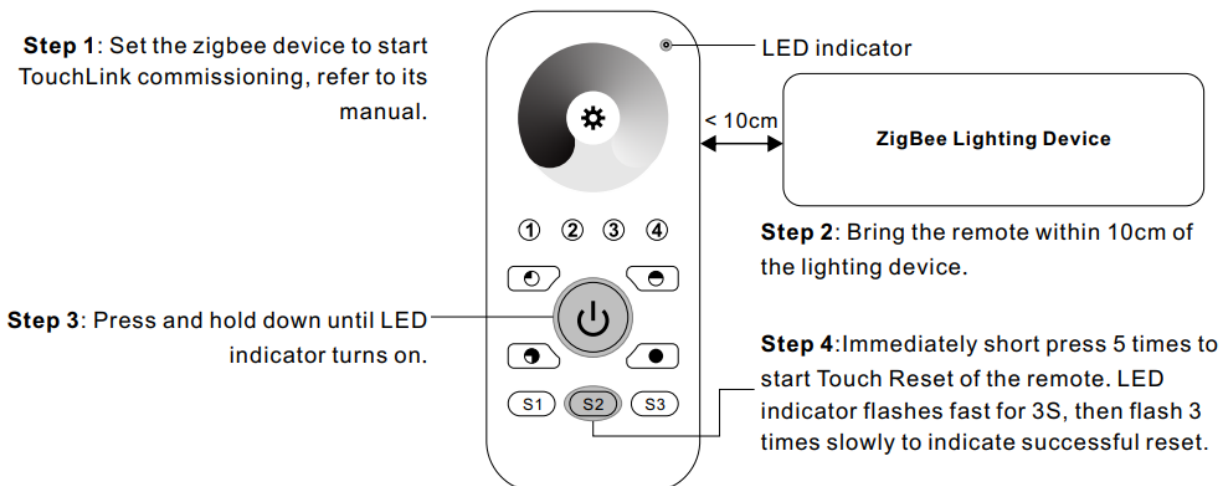


## 7. Remove a Touchlink Paired ZigBee Lighting Device



## 8. Factory Reset a Lighting Device (Touch Reset)

**Note:** the device shall be added to a network, the remote added to the same one or not added to any network.



## 9. Find and Bind a Zigbee Lighting Device

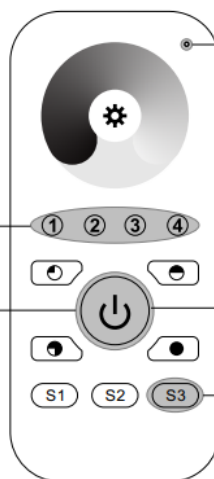
**Note:** Make sure the device and remote are already added to the same Zigbee network.

**Step 1:** Start find and bind mode on the ZigBee lighting device (initiator node) and enable it to find and bind target, refer to its manual.

**Step 3:** Short press a group button that you would like to bind the device to.

**Step 4:** Press and hold down until LED indicator blinks once and stay solid on.

**Note:** Each remote can bind max. 30 lighting devices.



LED indicator

ZigBee Lighting Device

**Step 2:** Short press to activate the remote, LED indicator turns on.

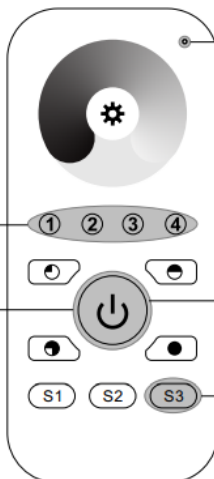
**Step 5:** Short press to enable the remote (target node) to find and bind initiator. LED indicator flashes 4 times for successful binding or twice if binding fails.

## 10. Find and Unbind a Zigbee Lighting Device

**Step 1:** Start find and bind mode on the ZigBee lighting device (initiator node) and enable it to find and unbind target, refer to its manual.

**Step 3:** Short press the group button that the device already bound to.

**Step 4:** Press and hold down until LED indicator blinks once and stay solid on.



LED indicator

ZigBee Lighting Device

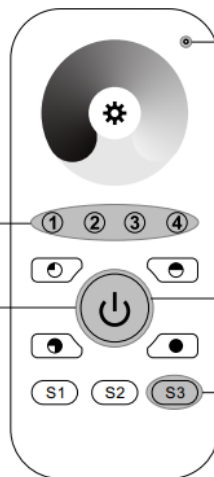
**Step 2:** Short press to activate the remote, LED indicator turns on.

**Step 5:** Short press twice to enable the remote (target node) to find and unbind initiator. LED indicator flashes 4 times for successful unbinding or twice if unbinding fails.

## 11. Clear All Find and Bind Mode Paired Lighting Devices of a Group

**Step 2:** Short press to choose the group that you would like to unbind all devices.

**Step 3:** Press and hold down until LED indicator blinks once and stay solid on.



LED indicator

**Step 1:** Short press to activate the remote, LED indicator turns on.

**Step 4:** Short press 5 times continuously to clear all bound lighting devices with this group. LED indicator flashes 4 times for successful unbinding.

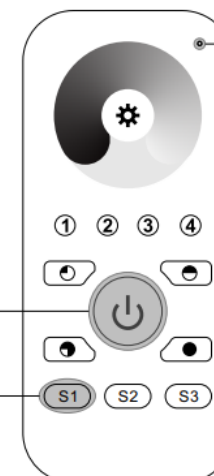
## 12. Setup a Network & Add Devices to the Network (No Coordinator or Hub Required)

**Step 1:** Factory reset the remote and the lighting device, refer to their manuals.

**Step 2:** TouchLink the remote and device to setup a network, refer to their manuals.

**Step 3:** Press and hold down until LED indicator turns on.

**Step 4:** Short press button S1 to enable the network to discover and add devices, LED indicator will flash twice. 180 seconds timeout, repeat the operation.



LED indicator

ZigBee Lighting Device

< 10cm

**Step 5:** Set another remote into network pairing mode and pair it to the network, refer to its manual.

**Step 6:** Add more remotes to the network as you would like.

**Step 7:** Factory reset the lighting devices that you would like then add them to the network, refer to their manuals.

**Step 8:** Touch the link to pair the added remotes and lighting devices, refer to their manuals. Each remote can link with max. 30 lighting devices. Each lighting device can be linked by max. 30 remotes.

### 13. OTA

The remote supports firmware updating through OTA and will acquire new firmware from the Zigbee controller or hub every 10 minutes automatically.

### 14. How to Check Whether the Remote Belongs to a Network or not

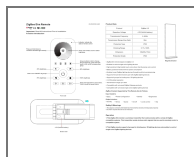
Activate the remote by clicking the All On/Off button (indicator on), then short press any other buttons except group buttons, indicator blinking 3 times means the remote does not belong to any network, blinking once or twice means it has already been added to a network.

### 15. Battery Power Monitor Function

**The remote will report battery power value to the coordinator under the following situations:**

- When powered on.
- When short press both S2 and S3 buttons simultaneously.
- When operating the switch to send data packets (over 4 hours since the last operation).
- When added to the network by a coordinator.

## Documents / Resources



[CHAINBOX SR-ZG2819S ZigBee Dim Remote](#) [pdf] Instruction Manual  
SR-ZG2819S ZigBee Dim Remote, SR-ZG2819S, ZigBee Dim Remote