



# CFE BMS Upgraded By CANbox User Guide

[Home](#) » [CFE](#) » CFE BMS Upgraded By CANbox User Guide 

Contents

1 CFE BMS Upgraded By CANbox

2 Product Information

3 Product Usage Instructions

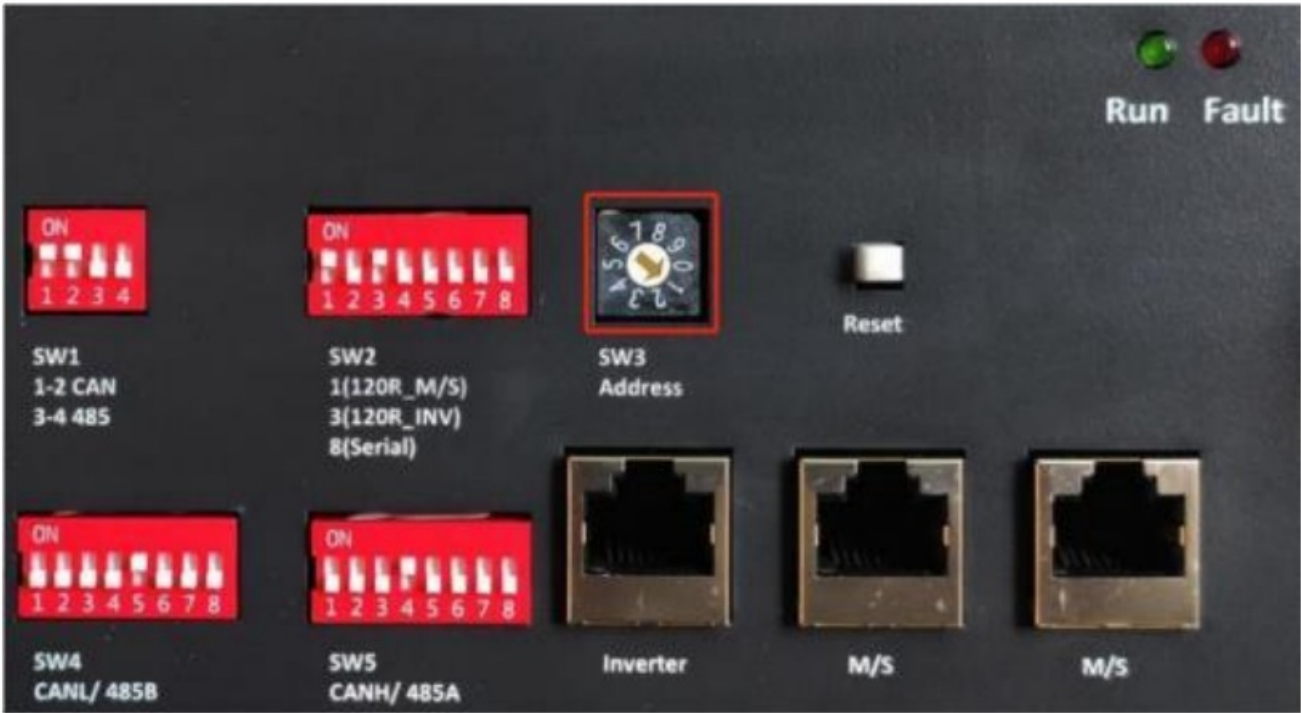
4 Operation Guidance

5 Documents / Resources

5.1 References

## CFE BMS

### CFE BMS Upgraded By CANbox



## Product Information

The product is a Battery Management System (BMS) that has been upgraded using the CAN box. The BMS is used to monitor the real-time running data of the battery and can also be used to upgrade the firmware of the battery. To perform the firmware upgrade, the BMS Monitor software needs to be used, and all communication cables connected to the 'M/S' terminal of the battery should be disconnected. The product requires the installation of three drivers located in the 'CAN Drivers' folder. The PC format should be set to 'Chinese Simplified China' for proper operation.

## Product Usage Instructions

To upgrade the firmware of the battery, please follow these steps:

1. Install the three drivers located in the 'CAN Drivers' folder.
  2. Set the PC format to 'Chinese Simplified China'.
  3. Open the BMS\_TOOL.exe software.
  4. Choose the Firmware Upgrade icon.
  5. Select the address of the battery, matching the SW3 setting on the battery.
  6. Click on the Connect icon to establish a connection with the battery.
  7. Click on Select File to choose the firmware file.
  8. Click on Upgrade to start the firmware upgrade process.
  9. After the firmware upgrade is completed, the battery will automatically turn off.
  10. Turn on the battery to complete the upgrade process.
- For additional support, please visit the CFE Support Website Service at [cfenergygroup.com](http://cfenergygroup.com).

## Operation Guidance

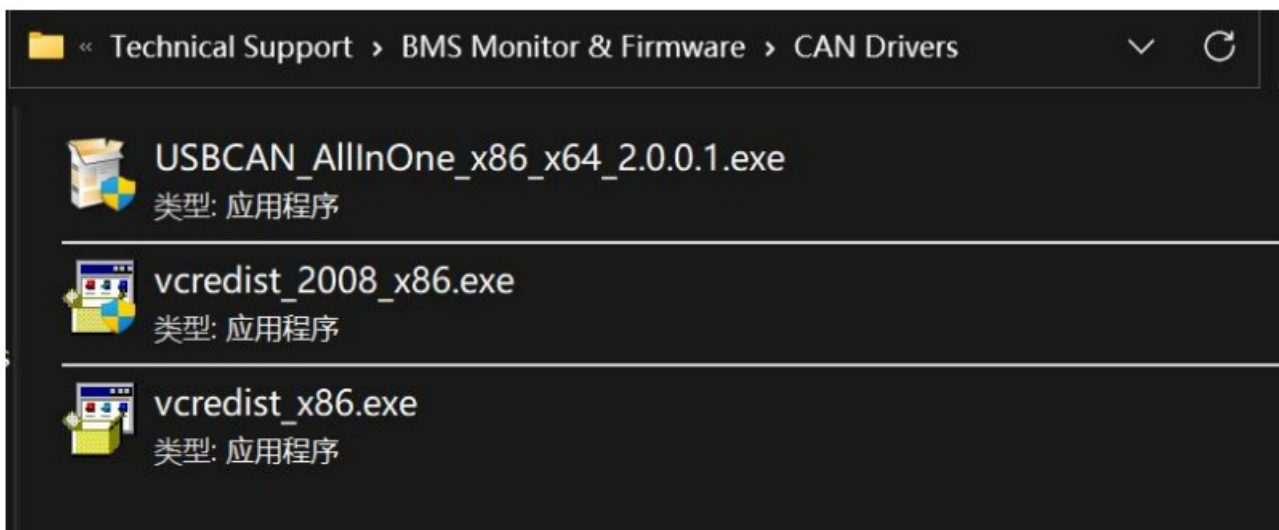
### Operation Guidance on BMS upgraded By CANbox

#### Note

If battery need upgrade the firmware, please disconnect all theCommunication cables of The 'M/S' terminal, BMS Monitor wasused to upgrade firmware or monitor battery real time runningdata.

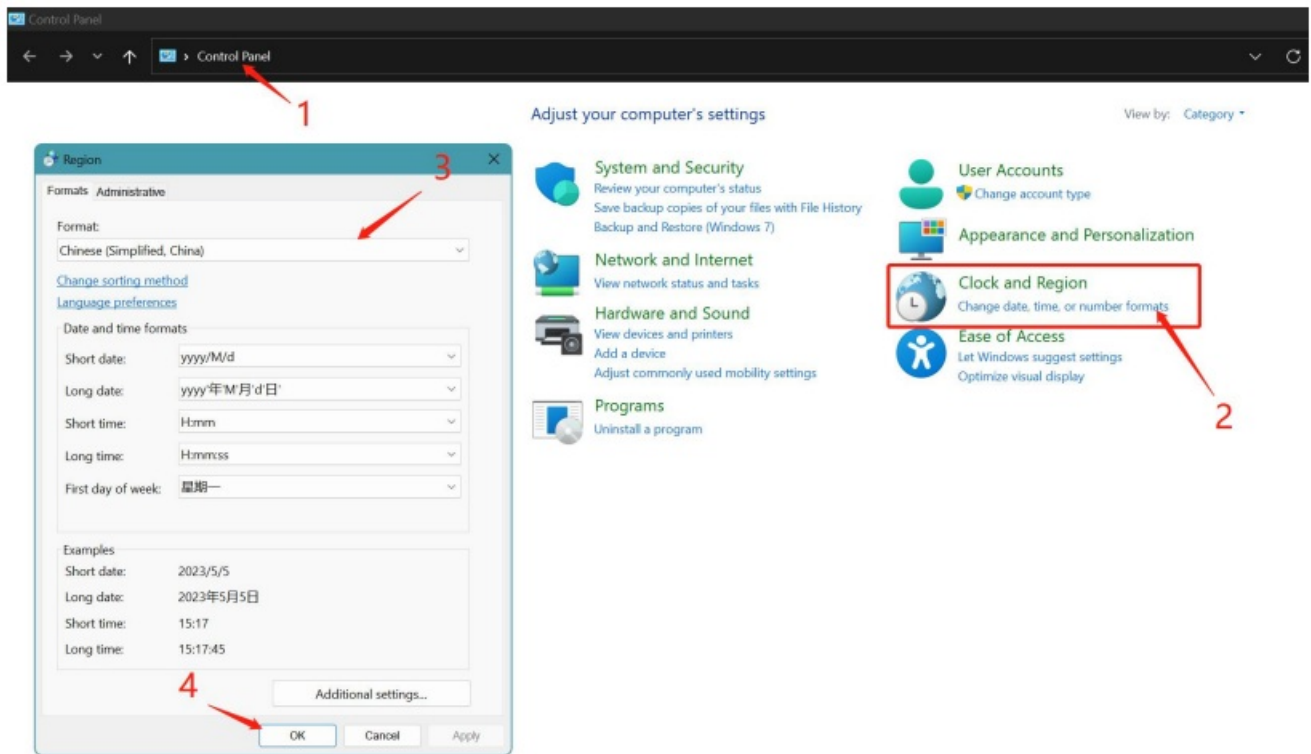
### Driver Installation

Install the 3 drivers in 'CAN Drivers' Folder



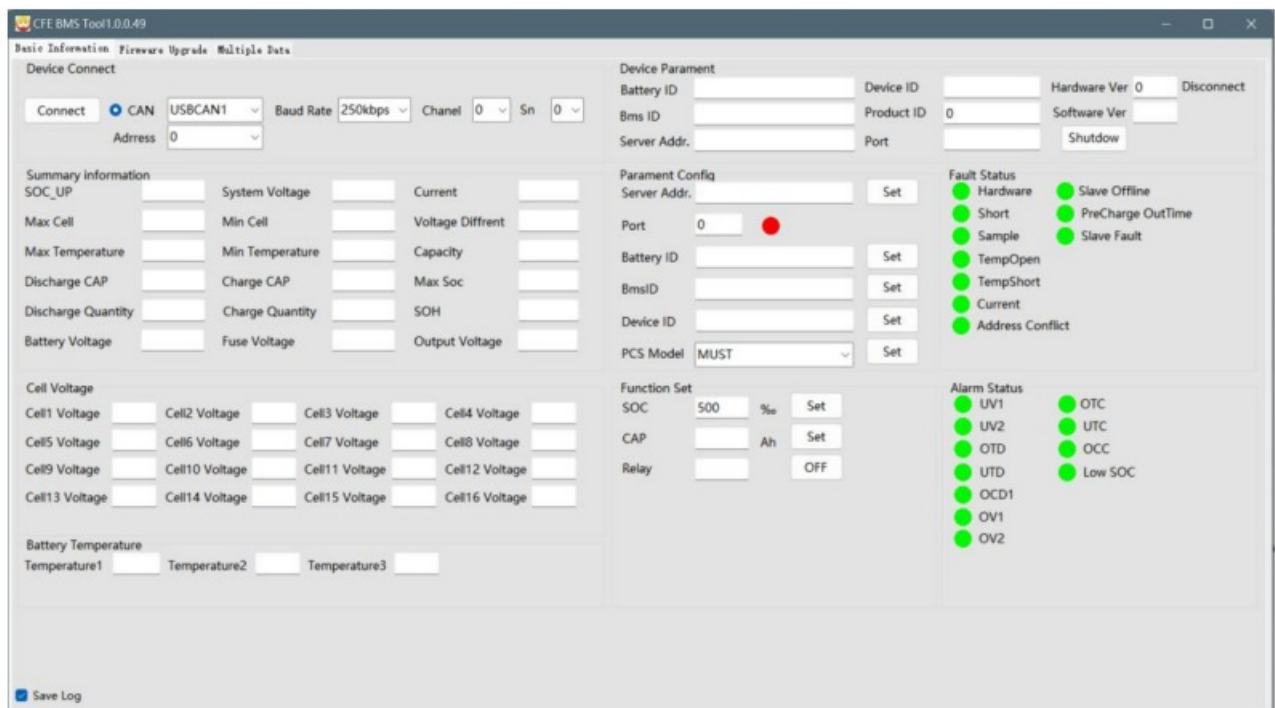
### Formats setting

Set the PC Format on 'Chinese Simplified China'

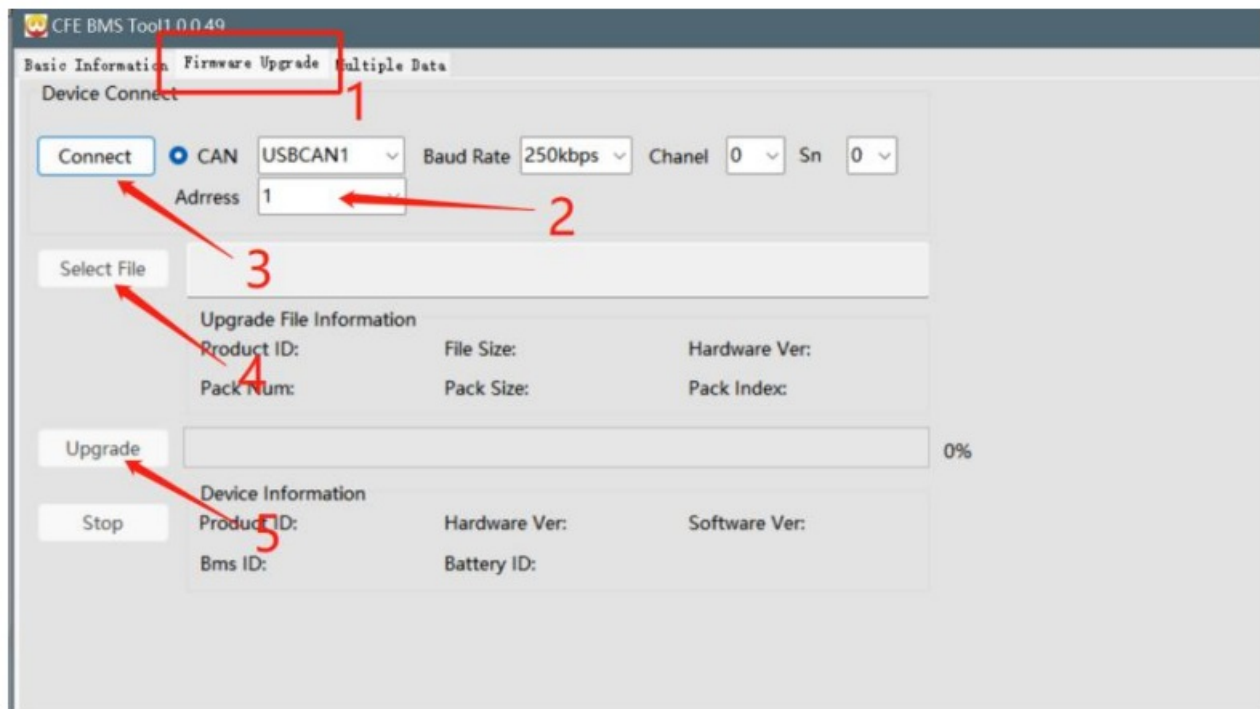


## Firmware upgrade by CAN Bus Tool & BMS Monitor

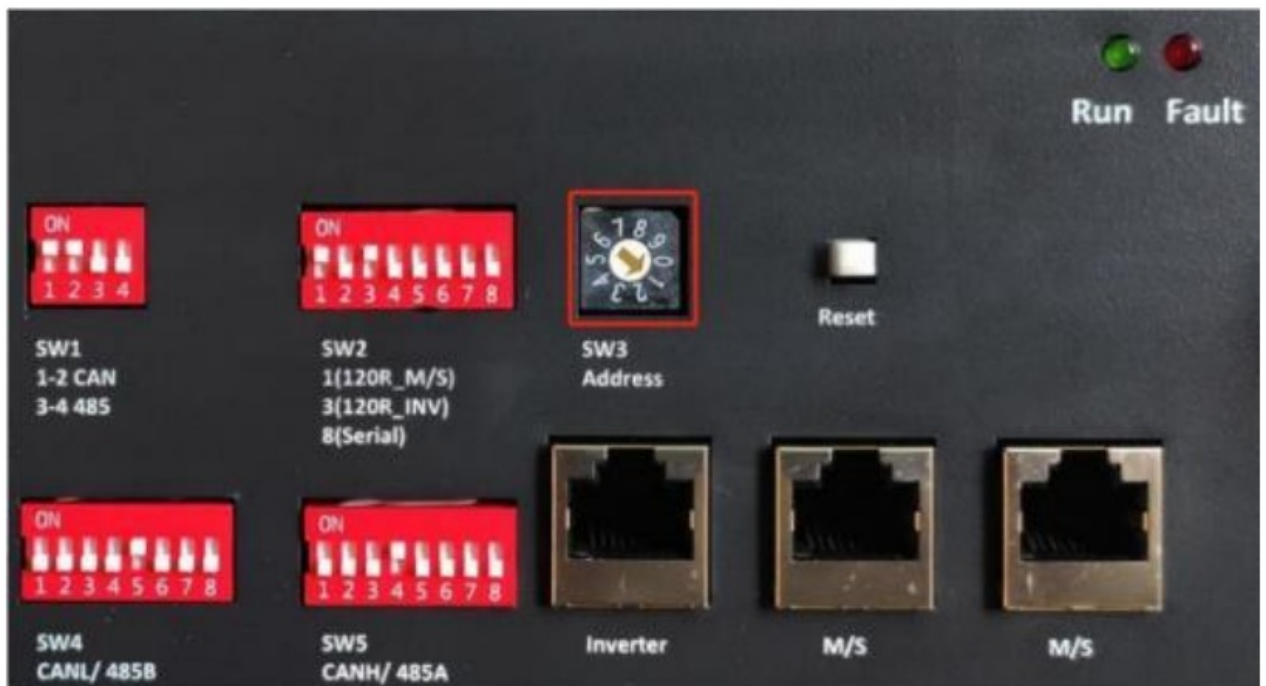
1. Open the “BMS\_TOOL.exe”;



2. Follow the steps below to do Firmware Upgrade



1. Choose "Firmware Upgrade" icon
2. Select "Address" of the battery (Match the SW3 on the battery)



3. Click "Connect" icon to connect the battery
4. Click "Select File" to select Firmware
5. Click "Upgrade" to do o Upgrade the battery
3. After the firmware upgraded, the battery will Turn OFF automatically
4. Turn the battery on than the upgrade is done

For more support please check CFE Support Website Service ([cfenergygroup.com](http://cfenergygroup.com))

## Documents / Resources



[CFE BMS Upgraded By CANbox](#) [pdf] User Guide  
BMS Upgraded By CANbox, BMS Upgraded, CANbox

References

- [CFE](#) [CF Energy](#)
- [CFE](#) [Service](#)