

# **cersanit P-BU-ENT-Wh Flush Button Enter Instruction Manual**

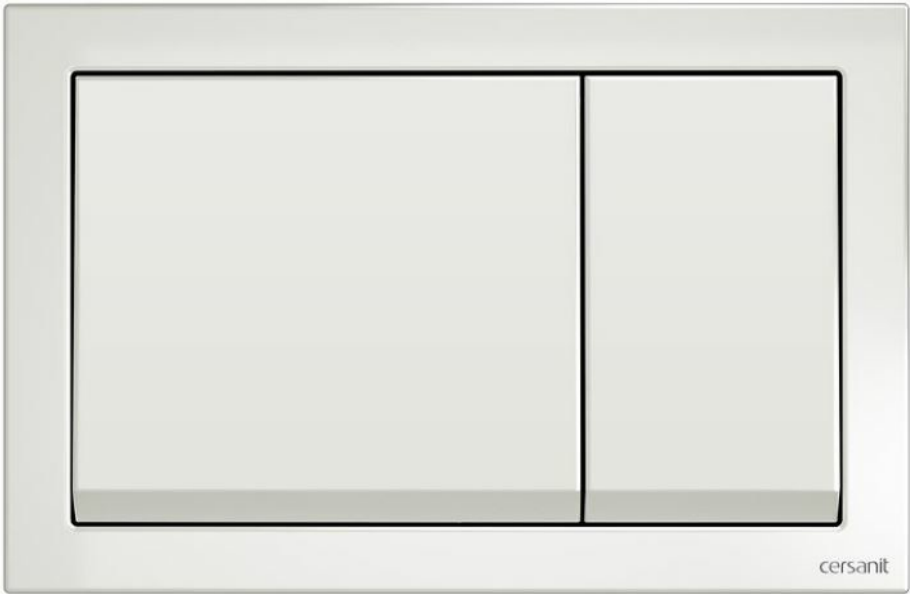
[Home](#) » [cersanit](#) » cersanit P-BU-ENT-Wh Flush Button Enter Instruction Manual 

**Contents**

- [1 cersanit P-BU-ENT-Wh Flush Button Enter](#)
- [2 Product Information](#)
- [3 Product Usage Instructions](#)
- [4 REQUIRED TOOLS](#)
- [5 HOW TO FIX](#)
- [6 Documents / Resources](#)

cersanit

**cersanit P-BU-ENT-Wh Flush Button Enter**



**Product Information**

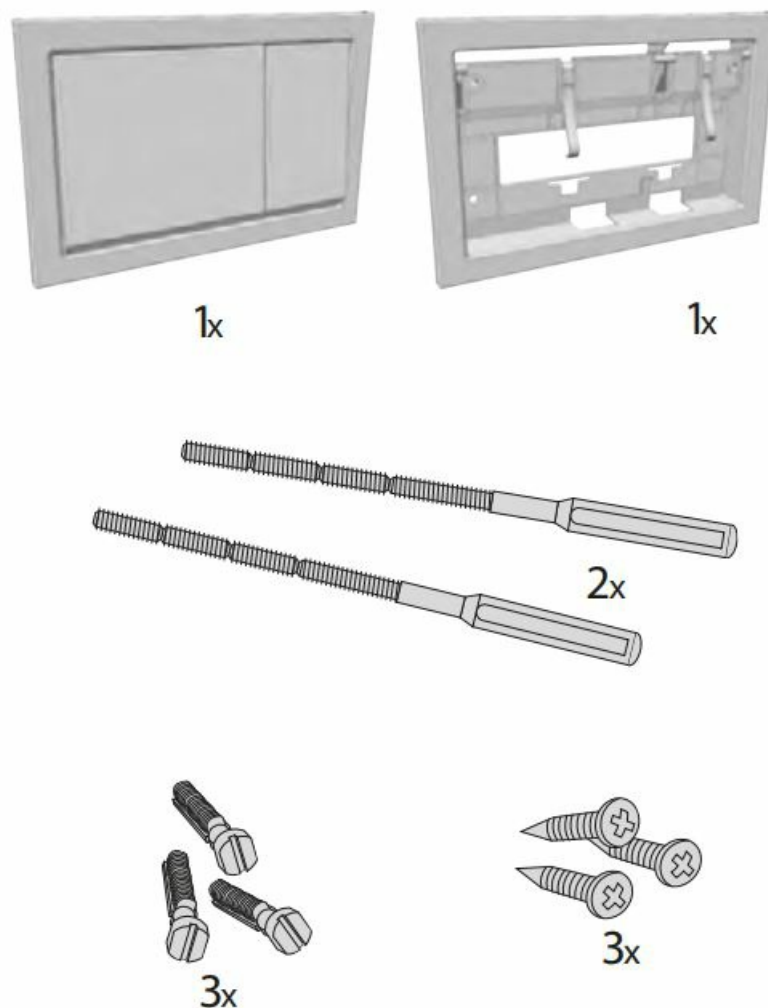
- Product Name: [Product Name]

- Model Number: 30-0501-1094
- Manufacturer: TM.by
- Product Website: <https://tm.by>

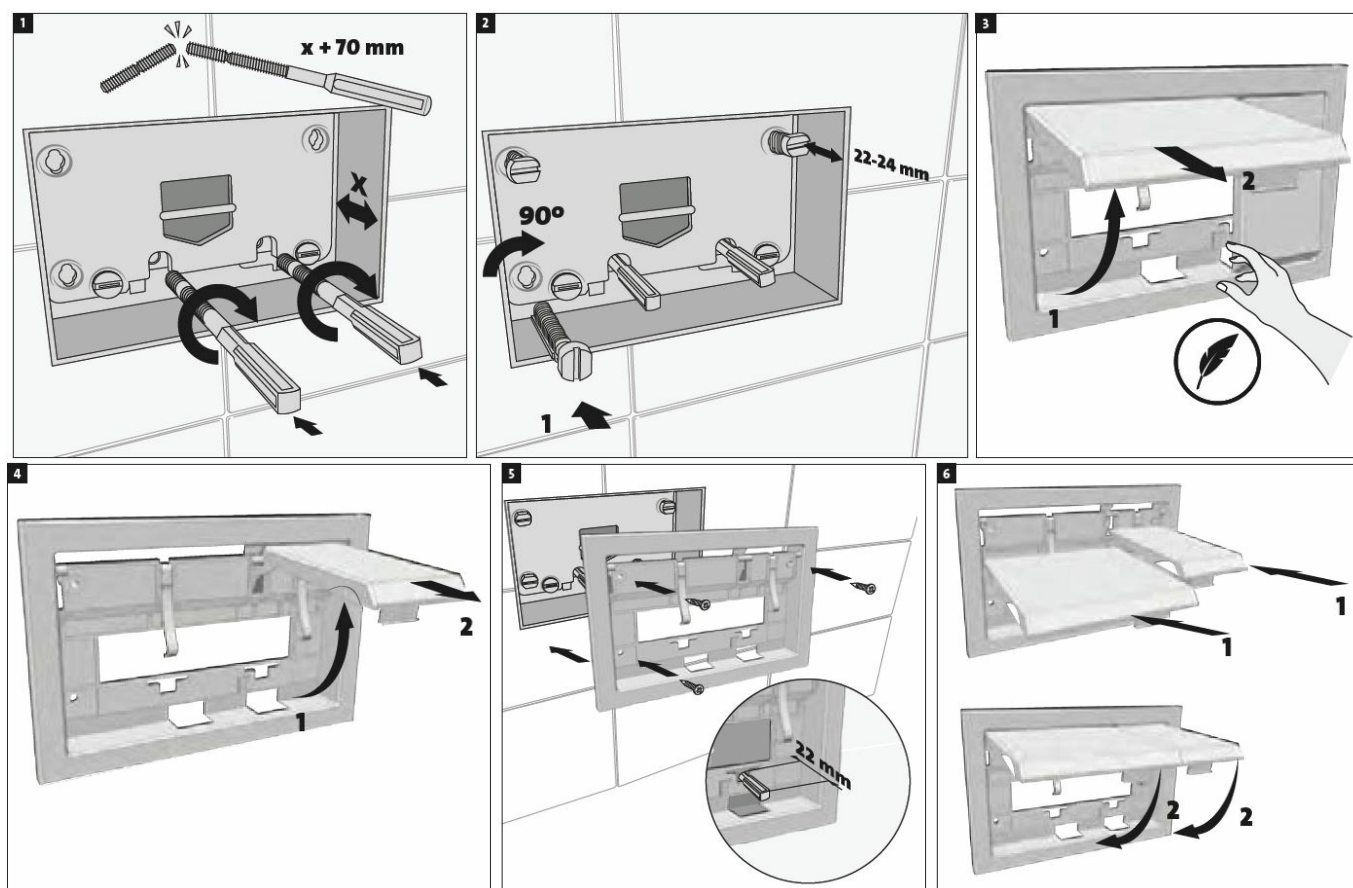
## Product Usage Instructions

1. Start by gathering the following components: 1x [Component], 2x [Component], 3x [Component]
2. Refer to the provided diagrams for assembling and using the product.
3. Follow these steps for assembly
  1. Place the [Component] in position X + 70 mm.
  2. Secure the [Component] with screws X 90.
  3. Attach [Component] 1 and [Component] 2 as shown in the diagrams.
  4. Use screws to fasten [Component] 1 and [Component] 2 together.
  5. Refer to the product website for additional instructions on assembly and use.
4. Ensure that all components are properly assembled and secured before using the product.
5. The product is designed for use with a 22-24 mm tool.
6. Follow proper safety precautions while using the product.

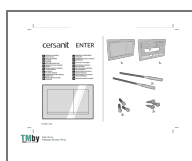
## REQUIRED TOOLS



## HOW TO FIX



## Documents / Resources



[cersanit P-BU-ENT-Wh Flush Button Enter](#) [pdf] Instruction Manual  
P-BU-ENT-Wh Flush Button Enter, P-BU-ENT-Wh, Flush Button Enter, Button Enter, Enter