



cersanit P-BU-ENT-Cg ENTER Flush Button Instruction Manual

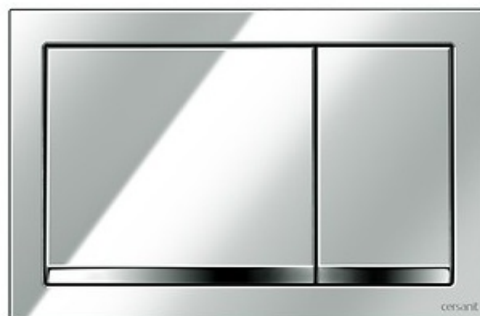
[Home](#) » [cersanit](#) » **cersanit P-BU-ENT-Cg ENTER Flush Button Instruction Manual** 

Contents

- [1 cersanit P-BU-ENT-Cg ENTER Flush Button](#)
- [2 Product Information](#)
- [3 WHATS IN THE BOX?](#)
- [4 INSTALLATION INSTRUCTION](#)
- [5 Documents / Resources](#)

cersanit

cersanit P-BU-ENT-Cg ENTER Flush Button

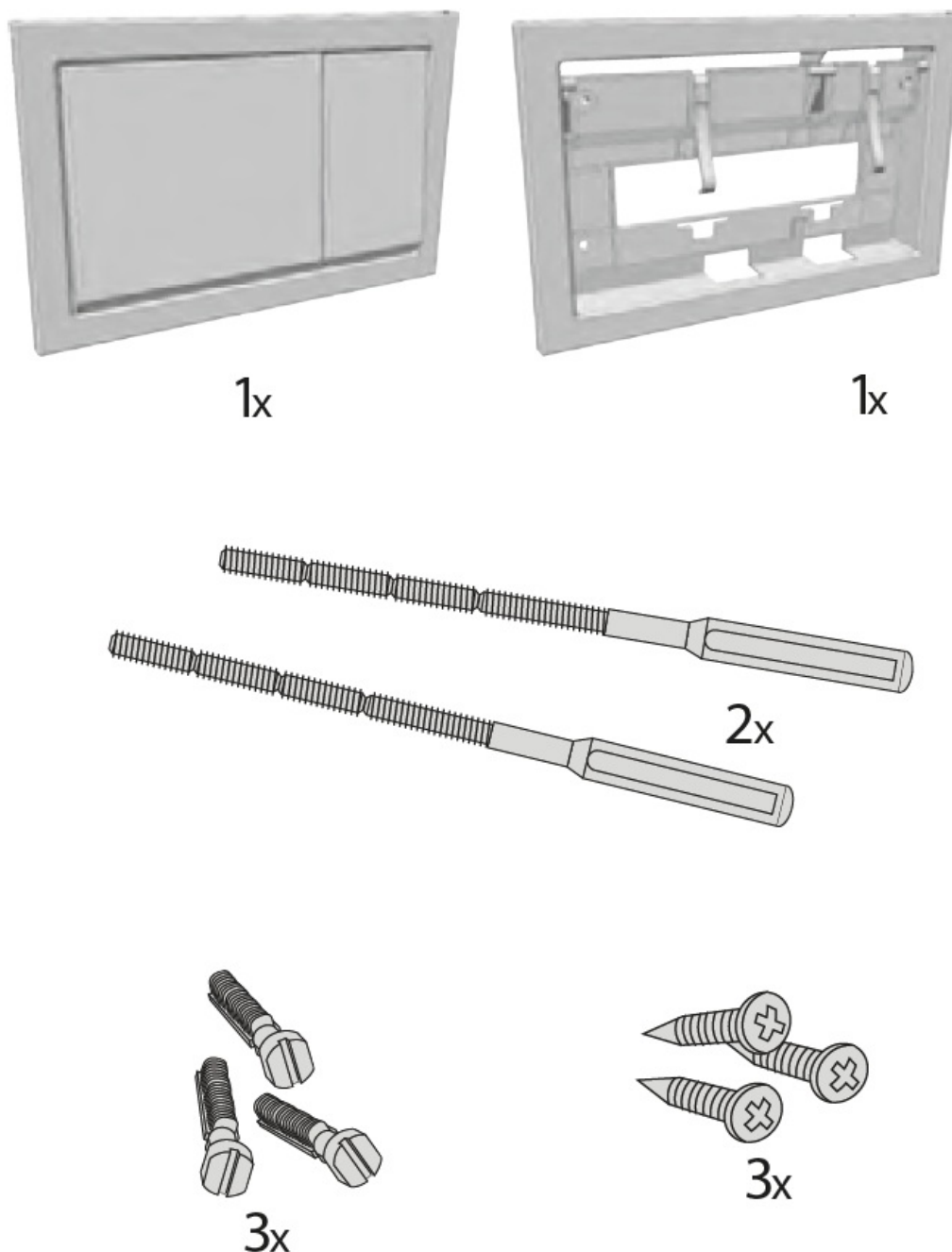


Product Information

This product is a user manual/instruction guide for a specific product. It provides information on assembly and usage of the product. The manual is available in multiple languages including Polish (PL), Slovak (SK), German

(DE), Ukrainian (UK), French (FR), Estonian (EE), Latvian (LV), Romanian (RO), Hungarian (HU), Lithuanian (LT), Serbian (SR), Ukrainian (UA), Belarusian (BY), Bulgarian (BG), and Russian (RU). The manual also includes numerical references such as 1x, 3x, 30-0501-1094, and 2x. There are several diagrams and measurements provided in the manual, including dimensions labeled as $x + 70 \text{ mm}$ and $X 90$. Additionally, there are images and measurements labeled as 1, 2, 3, 4, 5, and 6. The manual also contains references to a website, tm.by, which presumably provides further information or support related to the product.

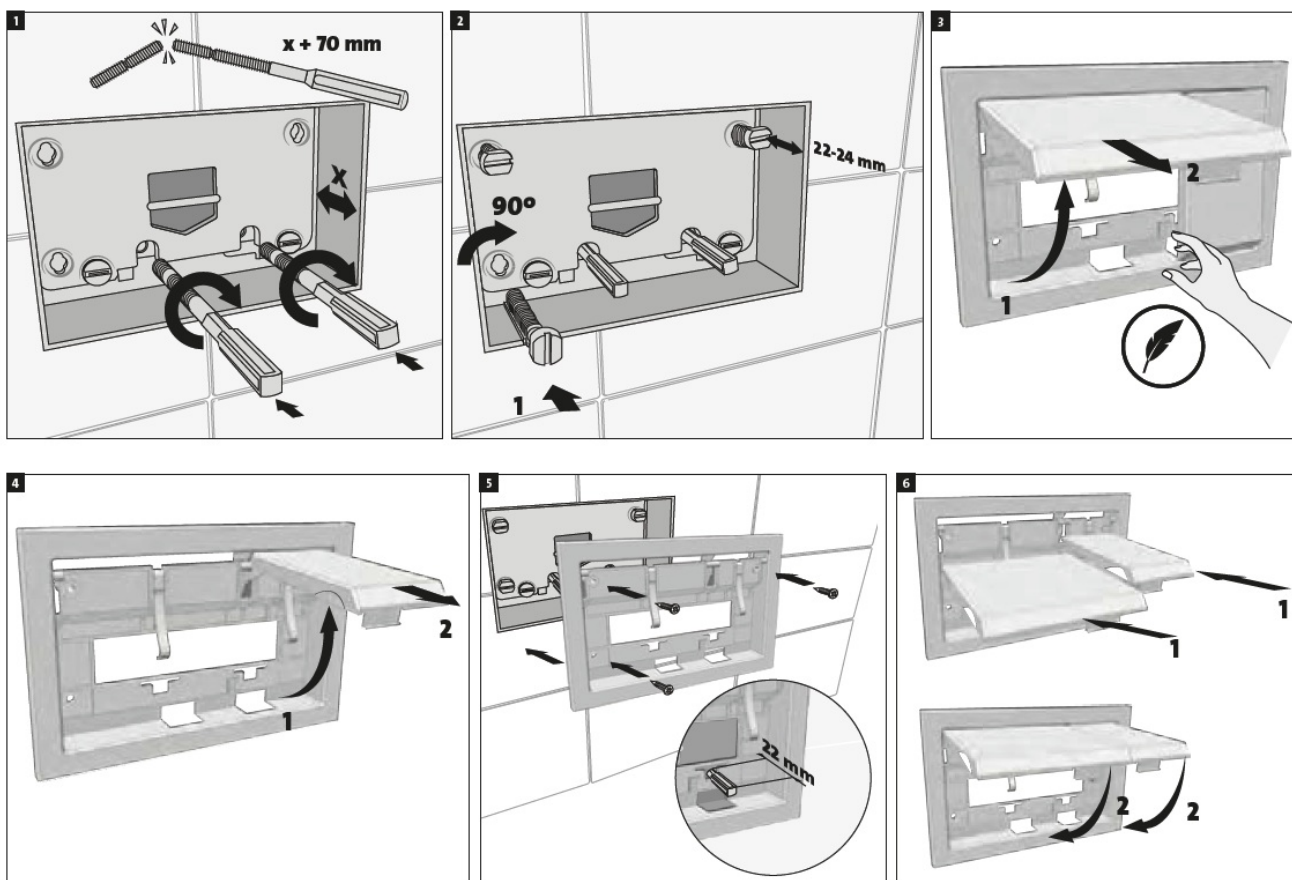
WHATS IN THE BOX?



INSTALLATION INSTRUCTION

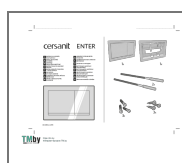
1. Start by selecting the appropriate language section in the manual based on your preference.
2. Follow the provided instructions for assembly and usage of the product.
3. Refer to the numerical references and diagrams to understand the different components and their measurements.
4. Pay attention to the dimensions labeled as $x + 70 \text{ mm}$ and $X 90$, as they may be crucial for proper assembly.

5. Use the images labeled as 1, 2, 3, 4, 5, and 6 to visualize the steps or components mentioned in the instructions.
6. If you require additional information or support, visit the website tm.by for further assistance.



<https://tm.by>

Documents / Resources



[cersanit P-BU-ENT-Cg ENTER Flush Button](#) [pdf] Instruction Manual
P-BU-ENT-Cg ENTER Flush Button, P-BU-ENT-Cg, ENTER Flush Button, Flush Button, Button