



CERBERUS PYROTRONICS TBM-2 MXLV Terminal Block Module Owner's Manual

[Home](#) » [CERBERUS PYROTRONICS](#) » CERBERUS PYROTRONICS TBM-2 MXLV Terminal Block Module Owner's Manual 

Contents

- [1 CERBERUS PYROTRONICS TBM-2 MXLV Terminal Block Module](#)
- [2 FEATURES](#)
- [3 Description](#)
- [4 Engineer and Architect Specifications](#)
- [5 Electrical Information](#)
- [6 Ordering Information](#)
- [7 Mounting Diagram](#)
- [8 Wiring Diagram](#)
- [9 Documents / Resources](#)
 - [9.1 References](#)
- [10 Related Posts](#)

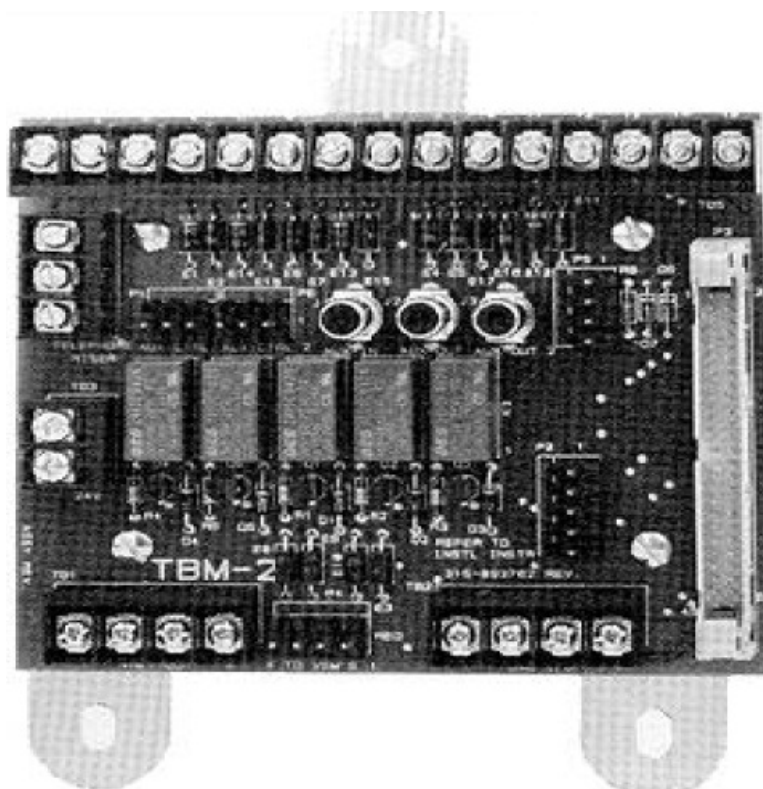


CERBERUS PYROTRONICS TBM-2 MXLV Terminal Block Module



FEATURES

- Audio Riser Connection
- Telephone Riser Connection Point
- Auxilliary Audio Input Jack (RCA Type)
- Configurable Auxilliary Recording Output Jack (RCA Type)
- Listed/ULC Listed, FM, NYMEA, CSFM Approved



Description

The TMB-2 is an MXLV module which acts as the central connection point for audio functions including audio and telephone riser wiring. The ACM-1 audio control module communicates with other MXLV modules through the TBM-2. The TBM-2 provides various screw terminal blocks and connectors for the interface between internal and field wiring. Through the use of the TBM-2, the number of connections and discrete internal wires is kept to a minimum, facilitating easy installation and system check out. Audio risers may be connected in either Style Y (Class B) or Style Z (Class A) configuration. A telephone riser may be connected in a Style Y (Class B) configuration. The TBM-2 also provides an RCA-type jack for connection of an external audio source, and an RCA-type jack for connection to an external audio recording unit. This recording jack is configurable to monitor either the microphone or telephone channels. When configured to monitor the microphone, it will become active whenever the microphone keyswitch is pressed. When configured to monitor telephone traffic, it will become active whenever a telephone station is on line. A dry contact output is available on the TBM-2 to start a recording device. The TBM-2 mounts in the upper right side of the MBR-2 enclosure backbox on studs provided.

Engineer and Architect Specifications

The emergency voice alarm/communication system shall provide a single module which shall act as the central connection point for audio functions including audio and telephone riser wiring. The audio control module shall communicate with other voice system modules through the terminal block module, model TBM-2. The TBM-2 shall provide various screw terminal blocks and connectors for interface between internal and field wiring. Through the use of the TBM-2, the number of connections and discrete internal wires shall be kept to a minimum, facilitating easy installation and system checkout. Audio risers shall be capable of being connected in either Style Y (Class B) or Style Z (Class A) configuration. A telephone riser shall only be capable of being connected in a Class B configuration. The TBM-2 shall also provide an RCA type jack for connection of an external audio source such as background music, and an RCA type jacks for connection to an external audio recording unit. This recording jack shall be configurable to monitor both the microphone and telephone channels. When configured to monitor the microphone, it shall become active whenever the microphone keyswitch is pressed. When configured to monitor telephone traffic, it shall become active whenever a telephone station is on line. Dry contact outputs shall be available on the TBM-2 to start a recording.

The TBM-2 shall mount in the upper right side of the MXL enclosure blackbox on studs provided.

Electrical Information

For the audio and telephone risers:

- Maximum wire size: 14 AWG twisted pair, shielded
- Minimum wire size: 18 AWG twisted pair, shielded
- Maximum loop resistance: 20 ohms for both wires

Ordering Information

Model	Description	Part Number
TBM-2	Terminal Block Module	500-893779
	Installation Instructions	315-093782

Mounting Diagram



[CERBERUS PYROTRONICS TBM-2 MXLV Terminal Block Module](#) [pdf] Owner's Manual
TBM-2 MXLV Terminal Block Module, TBM-2 MXLV, Terminal Block Module, Block Module

References

- 🔥 [Fire Alarm Resources | Download fire alarm documents](#)
- 🌐 [cerbpyro.com](#)