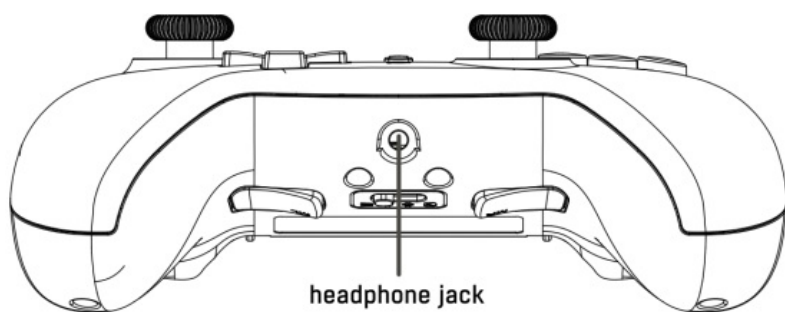
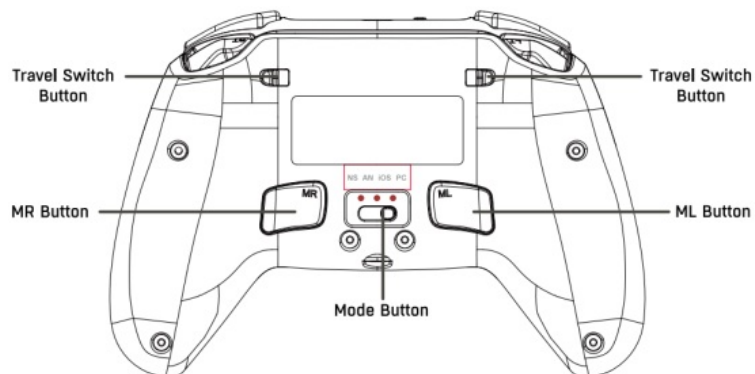
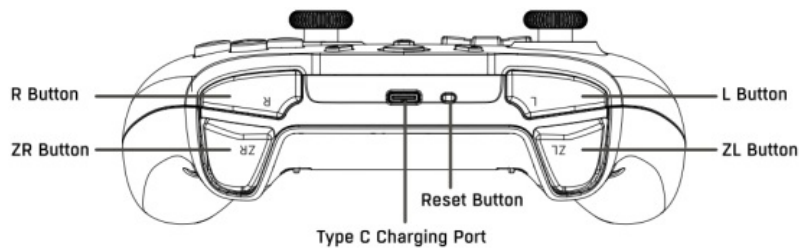
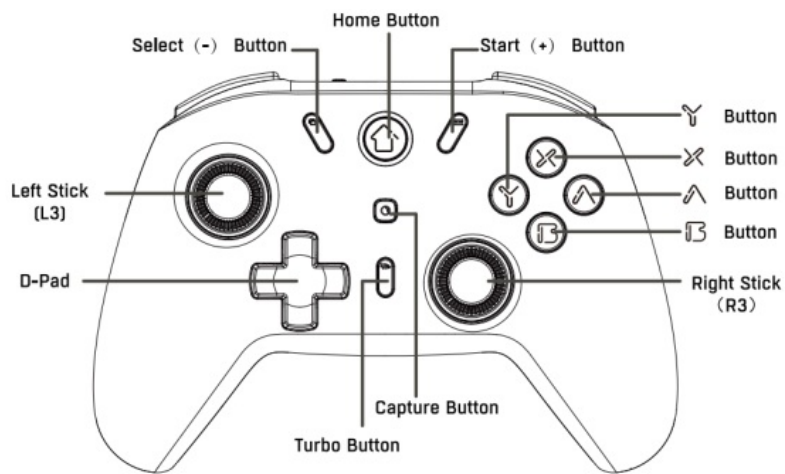




Contents [[hide](#)]

- [1 CEPTER HORIZON Wireless Controller User Guide](#)
- [2 Controller Specification](#)
- [3 Charging Station Specifications](#)
- [4 System Requirements](#)
- [5 Package Contents](#)
- [6 Switch Console Wireless Connection](#)
- [7 Wake Up and Reconnect](#)
- [8 Switch Console Wired Connection](#)
- [9 Audio Function](#)
- [10 Turbo and Auto-fire Setup](#)
- [11 Turbo Speed Levels:](#)
- [12 Adjust the Turbo Speed Levels:](#)
- [13 Adjusting Vibration Intensity](#)
- [14 Macro Definition Function](#)
- [15 Setting up the Macro Definition:](#)
- [16 Clearing the Macro Definition Settings:](#)
- [17 RGB Lighting Control Instructions:](#)
- [18 Charging Instructions:](#)
- [19 Documents / Resources](#)
 - [19.1 References](#)

CEPTER HORIZON Wireless Controller User Guide



Controller Specification

Input Voltage: 5V, 350mA

Working Voltage: 3.7V

Battery Capacity: 1000mAh

Size: 156*106.9*59.8mm

Weight: 290±10g

Bluetooth Version: 5.0

Charging Station Specifications

Interface: Type-C

Power Input: DC 5V/1-2A

Power Output: DC 5V/1A

Charging Duration: 2h

Weight: 98g

Size: 127*65*56mm

System Requirements

Windows PC, Steam Deck, Android (Android 10.0 & above), and IOS (IOS 13.4 & above) devices.

Package Contents

- Wireless controller × 1PC
- USB-A to USB-C cable 1PC
- Charging Station × 1PC
- Quick Start Guidex 1PC

Switch Console Wireless Connection

Please Note: Ensure that the airplane mode on the console is turned off before use.

Step 1: Begin by setting the connection mode switch to the “NS” position located on the back of the controller.

Step 2: Power on the controller and navigate to the controller’s menu to select “Change

Grip/Order.”

Step 3: Press and hold the sync button on the top of the controller for one second to enter Console Bluetooth Pairing mode;

LEDs 1 to 4 will flash rapidly in sequence.

Step 4: Once the connection is established successfully, LED 1 will remain illuminate.

Wake Up and Reconnect

Once the controller has successfully paired with the console:

- If the console is in SLEEP mode, pressing the HOME button on the controller can wake up both the controller and the console.
- If the console is already on, pressing any button on the controller will wake it up and allow it to reconnect to the console.

If you are unable to establish a connection, please follow these three steps:

- Disable Air plane mode on the console.
- Delete the controller’s information on the console (Navigate to System Settings > Controllers and Sensors > Disconnect Controllers)
- Repeat the First-Time Pairing steps.

Controller Auto Sleep

- While on a wireless connection, press and hold the home button for 3 seconds to disconnect the controller and activate sleep mode.
- If no buttons are pressed within 5 minutes, the controller will automatically enter sleep mode.
- The controller will also enter sleep mode when the console is in sleep mode.

Switch Console Wired Connection

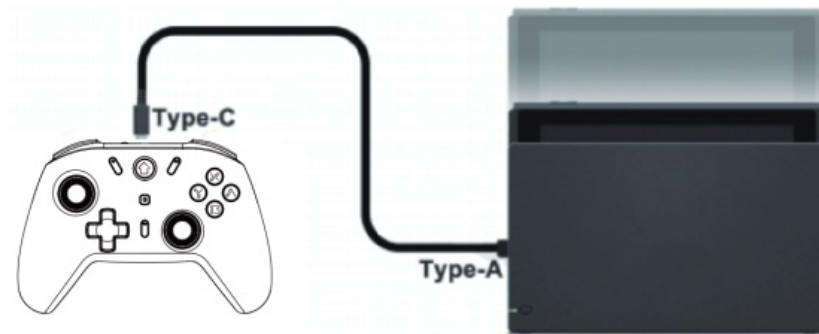
Step 1: Enable “Pro Controller Wired Communication on the console by navigating to System Settings > Controllers and Sensors Pro Controller Wired Communication > On.

Please Note: Ensure that “Pro Controller Wired Communication” is enabled BEFORE

connecting the controller and the Dock with the cable.

Step 2: Begin by adjusting the mode switch to the “NS” position located on the back of the controller

Step 3: Connect the controller to the console using a Type-C cable.



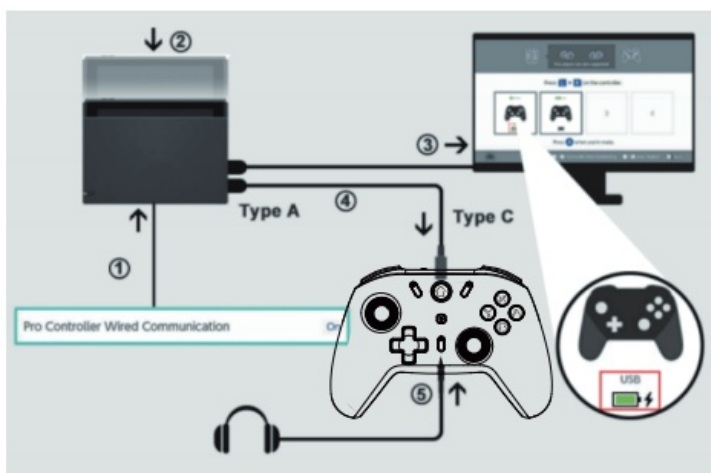
Step 4: Upon a successful connection, LED1 will begin to flash.

Audio Function

The controller features a 3.5mm audio port that supports 3.5mm wired headsets or microphones.

Please note:

- The audio function is functional ONLY in Wired Connection Mode with the console.
- It will NOT operate during wireless connections or when the controller is wired to a PC.



Ensure that ‘Pro Controller Wired Communication’ is turned on BEFORE connecting the controller and the Dock with the cable.

Step 1: Navigate to System Settings > Controllers and Sensors > Pro Controller Wired Communication and turn it On.

Step 2: Place the console in the dock and set it to TV mode.

Step 3: Connect the Dock and the controller using the USB cable.

Step 4: Look for the USB icon on the screen to confirm a successful wired connection,

Step 5: Insert the 3.5mm audio jack into the audio port located at the bottom of the controller.

Turbo and Auto-fire Setup

Buttons Available for Turbo Function: A/B/X/Y/LB/RB/LT/RT buttons

Setting Up the Turbo Function:

- **Manual Turbo Function:** Press and hold the Turbo button, then press any function button ONCE to activate the “Manual Turbo Function.”
- **Auto Turbo Function:** Repeat the first step above to switch to the “Auto Turbo Function.”
- **Turning Off the Turbo Function:** Repeat the first step after the “Auto Turbo Function” has been set,

Disabling All Turbo Functions for All Buttons:

Press and hold the Turbo button for 6 seconds until the controller vibrates, which will deactivate the turbo functions for all buttons.

Turbo Speed Levels:

- **Slow:** 5 shots/s, indicated by LED indicators flashing at a slow speed.
- **Medium:** 15 shots/s (Default Level), indicated by LED indicators flashing at a medium speed.
- **Fast:** 25 shots/s, indicated by LED indicators flashing at a fast speed.

Adjust the Turbo Speed Levels:

Press and hold the Turbo button, push down the right joystick to decrease one grade of turbo speed; pull up the right joystick to increase one grade of turbo speed.

You can test and check the Turbo settings on a console by following these steps:

Go to Settings > Controllers and Sensors > Test Input Devices > Test Controller Buttons.

Adjusting Vibration Intensity

There are four levels of Vibration Intensity: None, Weak, Medium, Strong.

- To Adjust the Vibration Intensity:
- Press and hold the Turbo button.
- Move the left joystick UP to increase one grade of vibration intensity.
- Move the left joystick DOWN to decrease one grade of vibration intensity,

Macro Definition Function

- The controller features two macro-enabled programmable buttons “ML/MR” on the back, which can be programmed into function buttons or button sequences.
- Macro Buttons can be programmed to: A/B/X/Y/LB/RB/LT/RT/up/down/left/right buttons.

Setting up the Macro Definition:

Step 1: Press and hold the “Capture” “ML”/”MR” together for 2 seconds. A short vibration will remind you, and LED2-LED3 will stay lit, indicating the controller is ready to record the macro setting.

Step 2: Press the function buttons that need to be set sequentially. The controller will record the button with the time interval between each button pressed.

Step 3: Press the macro button ML or MR shortly to save. A short vibration will remind you, and the corresponding player LED light will stay lit, indicating that the macro definition setting has been saved. The last macro definition setting will automatically apply when the controller reconnects to the console.

Clearing the Macro Definition Settings:

Step 1: Press the “Capture” “ML”/”MR” together for 2 seconds to enter settings mode. A short vibration will remind you, and the LED2-LED3 will stay lit.

Step 2: Exit setting mode by pressing the same ML/MR buttons, and the corresponding player LED will light up again, clearing the macro definition setting within the current slot.

RGB Lighting Control Instructions:

1. Startup Lighting Effect:

- There are four controllable RGB lights under each of the left and right joysticks with a psychedelic gradient at startup.
- Under ABXY, there is one controllable LED each that is on all the time (Light effect memory mode).

2. Lighting Display Modes:

- The colored lights are categorized into three major groups of light display modes:
 - a. Eight-color gradient mode.
 - b. Changing color breathing mode.
 - c. Fixed color mode.

3. Switching Light Effect Modes:

- Press the START key and the LEFT key to cycle through different modes: Seven-color gradient Single-color breathing → Fixed color All off.

4. Adjusting Light Intensity:

- Increase light brightness: Hold the "SELECT" and press the "Up" button on the D-Pad.
- Decrease light brightness: Hold the "START" and press the "Down" button on the D-Pad.
- There are six levels of light intensity: 20% brightness, 0-20%-40%-60%-80%-100%. The settings have memory and saving functionality.

5. Eight-color Gradient Mode:

- All lights are on with a seven-color gradient (left and right 3D lights).
- The left and right 3D lights change cyclically through colors: Red, Orange, Yellow, Green, Cyan, Blue, Purple, White,.

6. Single-color Breathing Mode:

- Eight types of colors: Red, Orange, Yellow, Green, Cyan, Blue, Purple, White.
- Colors automatically change to the next in sequence every second. Press the START key and the RIGHT key to switch to the next color.

7. Fixed Color Mode:

- Eight types of colors: Red, Orange, Yellow, Green, Cyan, Blue, Purple, White.
- Colors automatically change to the next in sequence every second. Press the START key and the RIGHT key of the D-pad to switch to the next color.

Multi-Platform Wireless Connection Setup:

Android Wireless Connection Mode:

Step 1: Move the mode switch to the “Android” position.

Step 2: Press and hold the pairing button on the controller’s top for one second to enter Android Bluetooth Pairing mode;
LEDs 2 and 3 will flash rapidly.

Step 3: Enable Bluetooth on your Android device and select the detected controller: GAMEPAD.

Step 4: Upon successful connection, LEDs 2 and 3 will remain steady.

PC Steam Deck Wireless Connection Mode:

Step 1: Configure the mode switch to the “WIN PC” position.

Step 2: Press and hold the pairing button on the controller’s top for one second to activate Bluetooth pairing mode; LEDs 1 to 4 will flash rapidly.

Step 3: Enable Bluetooth on your PC/Steam Deck and choose the identified controller: Pro Controller.

Step 4: After a successful connection, LED 1 will stay solid.

IOS Wireless Connection Mode:

Step 1: Set the mode switch to the “IOS” position.

Step 2: Press and hold the pairing button on the controller’s top for one second to activate Bluetooth pairing mode; LEDs 1 and 2 will flash rapidly.

Step 3: Enable Bluetooth on your iOS device and select the detected controller: Xbox Wireless Controller.

Step 4: Upon successful connection, LEDs 1 and 2 will remain steady.

Wired Connection:

Step 1: For a wired connection, switch the mode switch to the PC mode gear and connect the PC console using the included Type-C data cable. LED1 LED3 will be on.

Step 2: Switch between modes by pressing and holding the Start Select keys for 3

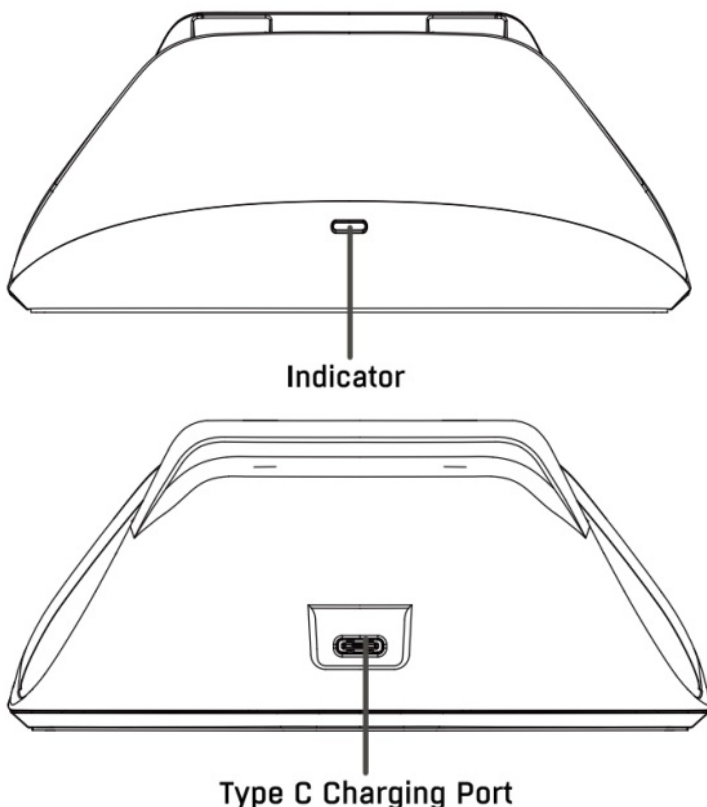
seconds. In Dinput mode, LED1. LED4 will be on.

Step 3: Under PC mode, double-clicking the CAPTURE key can switch the function between the cross key and the left joystick.

Note: The audio function only works in the WIRED Pro Controller mode and will not work in the wireless Pro Controller mode,

Charging Instructions:

- The controller can be charged using the console charger, the Dock, a 5V 2A power adapter, or USB power supplies with a USB Type-C to Type-A cable.
- While charging with the console, the channel LED light(s) will flash, and the lights will turn off when fully charged.
- If charging without the console, the four LED lights will flash, turning off when fully charged,
- Low battery is indicated by flashing channel LED light(s), prompting a charge to prevent the controller from turning off, Indicator Light Functionality of Charging Station:
- When the charging dock is powered on, the white indicator lights up briefly.
- During the gamepad charging process, the white light remains illuminated,
- Once the gamepad is fully charged, the white light switches off.



Calibrating the Control Sticks:

Step 1: Press the HOME button.

Step 2: Navigate to System Settings > Controllers and Sensors > Calibrate Control Sticks.

Step 3: Press the stick you want to calibrate.

Step 4: Follow the on-screen instructions to verify the controller functionality.

Calibrating Motion Controls:

1. Press the HOME button.
2. Navigate to System Settings > Controllers and Sensors > Calibrate Motion Controls > Calibrate the Controllers.
3. Place the controller on a horizontal plane.
4. Hold "SELECT(-)" or "START(+)" on the controller you want to calibrate.

Please Note:

- For first-time use of the wireless controller, it is recommended to calibrate both the Controller Sticks and Motion Controls before usage.
- If calibration fails, press the "Y" button to restore settings and the "X" button to repeat the calibration steps.
- After calibration, power off the controller, then restart both the controller and console for the settings to take effect.

Calibration and Interchange Function:

- If the joystick is not centered or drifts during use, you can manually correct it.
- First, turn the trigger limit switch to the analog gear,
- Press the Turbo Start Home keys to enter calibration mode, LED1 LED3 and LED2 LED4 will flash alternately.
- Shake the left and right joysticks two or three times. Slowly press the trigger. Repeat this process two or three times.
- Press the Select key to exit calibration mode, completing the calibration process.

Functionality Instructions:

3D Circular/Rectangular Switching:

- To switch between circular and rectangular modes, press L3 Capture key.
- The RGB lights around 3D will change between red and blue.
- Motor vibration prompts will indicate the mode switch.
- The default mode is circular

ABXY Position Interchange:

- Press Capture A key to interchange the A and B buttons, and the X and Y buttons.
- The RGB lights around 3D will change between red and green..
- Motor vibration prompts will indicate the button swap.
- Memory adjustment is available for this function.

3D Dead Zone Conversion:

- Press START key + L3/R3 to toggle the dead zones.
- The indicator light will flash three times, accompanied by motor vibration prompts.
- You can turn off or on the left and right 30 dead zones with a 0% dead zone option.

Restore Factory Defaults:

- Press and hold Select L3 R3 for 5 seconds to restore factory defaults.
- Turbo vibration, macro definition, lighting effects, and key swaps will reset to their default values.
- The motor will vibrate for an extended period to indicate the reset completion.

Battery Functions:

Charging:

- When the gamepad is off and charging, the decorative lights are turned off. LED1-LED4 flash slowly.
- When fully charged, the LED lights turn off.

Battery Level Display:

- While the gamepad is on, briefly press the Turbo and keys to display the battery level
- After 3 seconds, it returns to the current channel light status.
- Light 1: 1%-25% battery level
- Lights 1 and 2: 26%-50% battery level
- Lights 1, 2, and 3: 51%-75% battery level
- Lights 1, 2, 3, and 4: 76%-100% battery level

Low Battery Status:

- If the lithium battery voltage drops below $3,55V \pm 0,1V$, the current channel light flashes quickly to indicate low voltage.
- The voltage threshold can be adjusted as needed.

Low Battery Shutdown:

- If the lithium battery voltage falls below $3.35V \pm 0.1V$, the gamepad will automatically enter sleep mode.
- The voltage threshold can be adjusted according to requirements.

Firmware Update Instructions:

Step 1: Download the “KeyLinker” app from your mobile app store.

Step 2: Press and hold the SYNC button on the controller until the indicators flash quickly.

Step 3: Enable Bluetooth on your mobile device and pair it with the controller named “KeyLinker BLE-XXXX”.

Step 4: Open the “KeyLinker” app and refresh it. Connect with the device “GAMEPAD” to access the app’s features.

Now you can now customize functions and upgrade the firmware of your controller through the app.

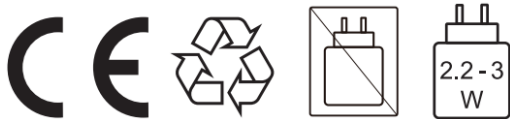
Step 5: Select “Update Device” from the app menu.

Step 6: If a new version is available, click “Update Now” and confirm by selecting “Yes” when the update prompt appears.

Step 7: The firmware will be successfully updated. Restart your device and the app.

Note:

- Firmware updates are primarily to address occasional bugs.
- Only update if your controller experiences issues during use.
- There are no functional differences between firmware versions.



■ This symbol on the product or in the instructions means that your electrical and electronic equipment should be disposed at the end of its life separately from your household waste. There are separate collection systems for recycling in the EU. For more information please contact the local authority or your retailer where you purchased the product.

Power International AS,

PO Box 523, 1471 Lørenskog, Norway

Power Norge:

<https://www.power.no/kundeservice/>

T: 21 00 40 00

Expert Danmark:

<https://www.expert.dk/kundeservice/>

T: 70 70 17 07

Power Danmark:

<https://www.power.dk/kundeservice/>

T: 70 33 80 80

Punkt 1 Danmark:

<https://www.punkti.dk/kundeservice/>

T: 70 70 17 07

Power Finland:

<https://www.powerfi/tuki/asiakaspalvelu/>

T: 0305 0305

Power Sverige:



Documents / Resources

| | |
|--|--|
| | <p>CEPTER HORIZON Wireless Controller [pdf] User Guide</p> <p>4894526096533, HORIZON Wireless Controller, HORIZON, Wireless Controller, Controller</p> |
|--|--|

References

- [User Manual](#)

4894526096533, CEPTER, controller, Horizon, HORIZON Wireless Controller, Wireless
CEPTER Controller

Leave a comment

Your email address will not be published. Required fields are marked *

Comment *

Name

Email

Website

☐ Save my name, email, and website in this browser for the next time I comment.

Post Comment

Search:

Search

[Manuals+](#) | [Upload](#) | [Deep Search](#) | [Privacy Policy](#) | [@manuals.plus](#) | [YouTube](#)

This website is an independent publication and is neither affiliated with nor endorsed by any of the trademark owners. The "Bluetooth®" word mark and logos are registered trademarks owned by Bluetooth SIG, Inc. The "Wi-Fi®" word mark and logos are registered trademarks owned by the Wi-Fi Alliance. Any use of these marks on this website does not imply any affiliation with or endorsement.