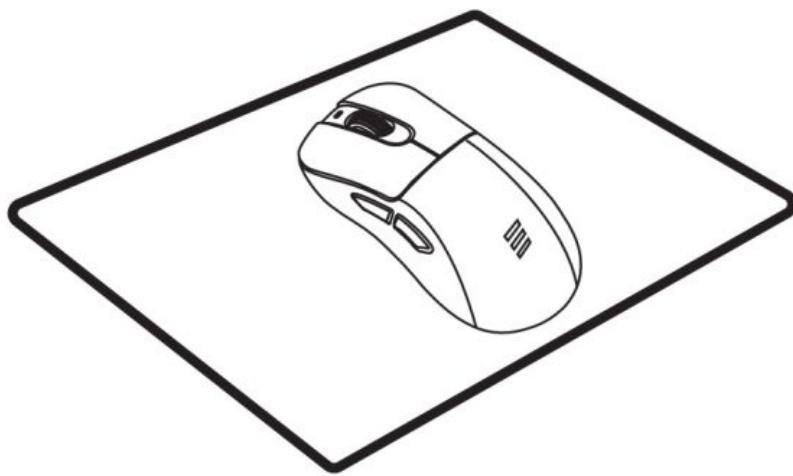




CLOKIKITM Gaming Mouse
User Manual



Contents [[hide](#)]

- [1 Safety Precautions](#)
- [2 Package Content](#)
- [3 Technical Specifications](#)
- [4 Product Layout](#)
- [5 Mouse Operation](#)
- [6 Driver Download](#)
- [7 Documents / Resources](#)
 - [7.1 References](#)

Safety Precautions

To prevent fire, injury, electric shock, or equipment damage, please refrain from immersing the product in liquids, spraying liquid on it, or allowing liquid to enter the

device. Cease use if there is significant damage.

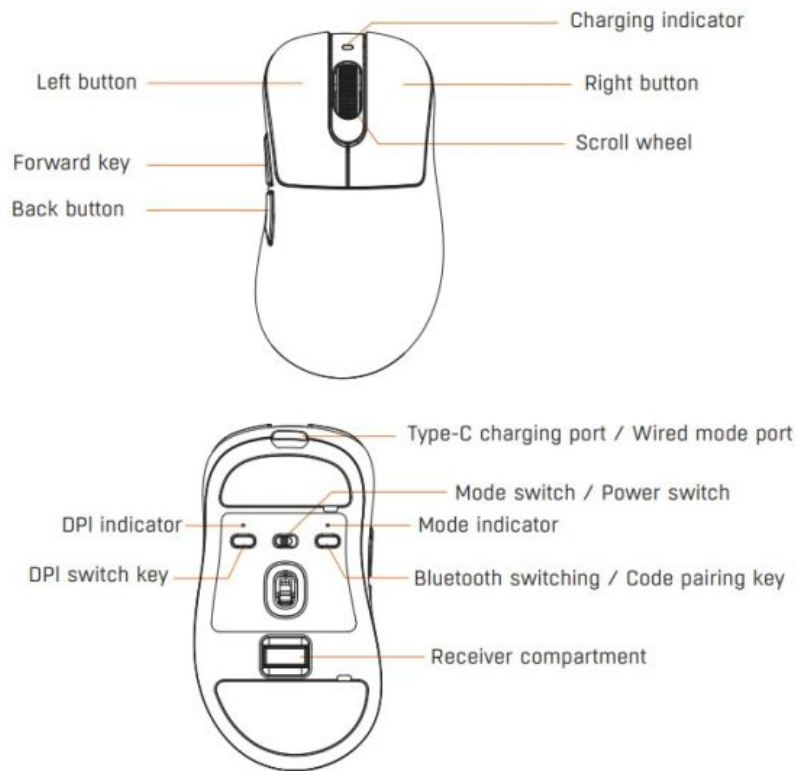
Package Content

- Gaming Mouse
- User Manual
- USB A-C Cable
- USB Nano Receiver
- Medium Mouse Pad

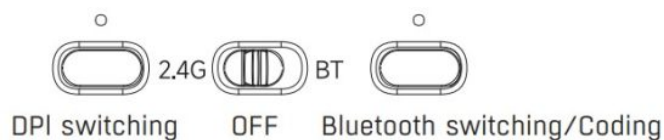
Technical Specifications

Number of Buttons	7 buttons (5 programmable)
Connectivity	Wired/Bluetooth/2.4GHz
Resolution	800(Red)/ 1600(Green)/ 2400(Blue)/ 3200(Yellow)/5000(Cyan)/ 12000(Purple)
Polling Rate	Dual 1000Hz (Wired/Wireless)
Battery Capacity	Built-in 400mAh Li-ion Battery
Product Weight	Approx. 65g (Mouse only)
System Requirements	Windows 7 (or higher) Mac OS Internet connection for software installation

Product Layout



Mouse Operation



- **DPI Switching**

Short-press the DPI key to switch between different values. The corresponding indicator will display different colors, turning off 5 seconds after switching.

- **Wired Mode**

Connect the mouse to your computer using the cable. It will default to wired mode and begin charging.

- **2.4G Mode**

Switch the center toggle to the left for 2.4G mode. The mode indicator will light up red. Insert the USB receiver into your computer.

- **Bluetooth Mode**

Switch the center toggle to the right for Bluetooth (BT) mode. Short-press the code key to switch between Bluetooth connections (BT1 – green light / BT2 – blue light). Long-press the code key to enter Bluetooth pairing mode; the indicator light will blink. Use your Bluetooth devices to search for and pair with “CLOKIKITM.”

- **Charging**

The indicator light will flash red when the battery is low, turn purple while charging,

and glow green when fully charged.

Note: Do not use a fast charger to charge directly.

Driver Download

Customize mouse buttons, DPI settings, macro settings, and other functions can all be set in the software driver. Go to [power.no](https://www.power.no)

Note: The driver is only compatible with Windows 10 and above systems.

It is recommended to disable antivirus software during installation to prevent installation failure.


This symbol on the product or in the instructions means that your electrical and electronic equipment should be disposed of at the end of its life separately from your household waste. There are separate collection systems for recycling in the EU. For more information, please contact the local authority or your retailer where you purchased the product.

Power International AS, PO Box 523, 1471 Lørenskog, Norway

Power Norge: https://www.power.no/kundeservice/ T: 21 00 40 00	Punkt 1 Danmark: https://www.punkt1.dk/kundeservice/ T: 70 70 17 07
Expert Danmark: https://www.expert.dk/kundeservice/ T: 70 70 17 07	Power Finland: https://www.power.fi/tuki/asiakaspalvelu/ T: 0305 0305
Power Danmark: https://www.power.dk/kundeservice/ T: 70 33 80 80	Power Sverige: https://www.power.se/kundservice/ T: 08 517 66 000



Documents / Resources

	CEPTER CLOKIKITM Gaming Mouse [pdf] User Manual 4894526097530_4, CLOKIKITM Gaming Mouse, CLOKIKITM, Gaming Mouse, Mouse
---	--

References

- [User Manual](#)

📎 4894526097530_4, CEPTER, CLOKIKITM, CLOKIKITM Gaming Mouse, Gaming Mouse,
📁 CEPTER mouse

Leave a comment

Your email address will not be published. Required fields are marked *

Comment *

Name

Email

Website

☐ Save my name, email, and website in this browser for the next time I comment.

Post Comment

Search:

e.g. whirlpool wrf535swhz

Search

[Manuals+](#) | [Upload](#) | [Deep Search](#) | [Privacy Policy](#) | [@manuals.plus](#) | [YouTube](#)

This website is an independent publication and is neither affiliated with nor endorsed by any of the trademark owners. The "Bluetooth®" word mark and logos are registered trademarks owned by Bluetooth SIG, Inc. The "Wi-Fi®" word mark and logos are registered trademarks owned by the Wi-Fi Alliance. Any use of these marks on this website does not imply any affiliation with or endorsement.